

Secrets below the Belgian seafloor...

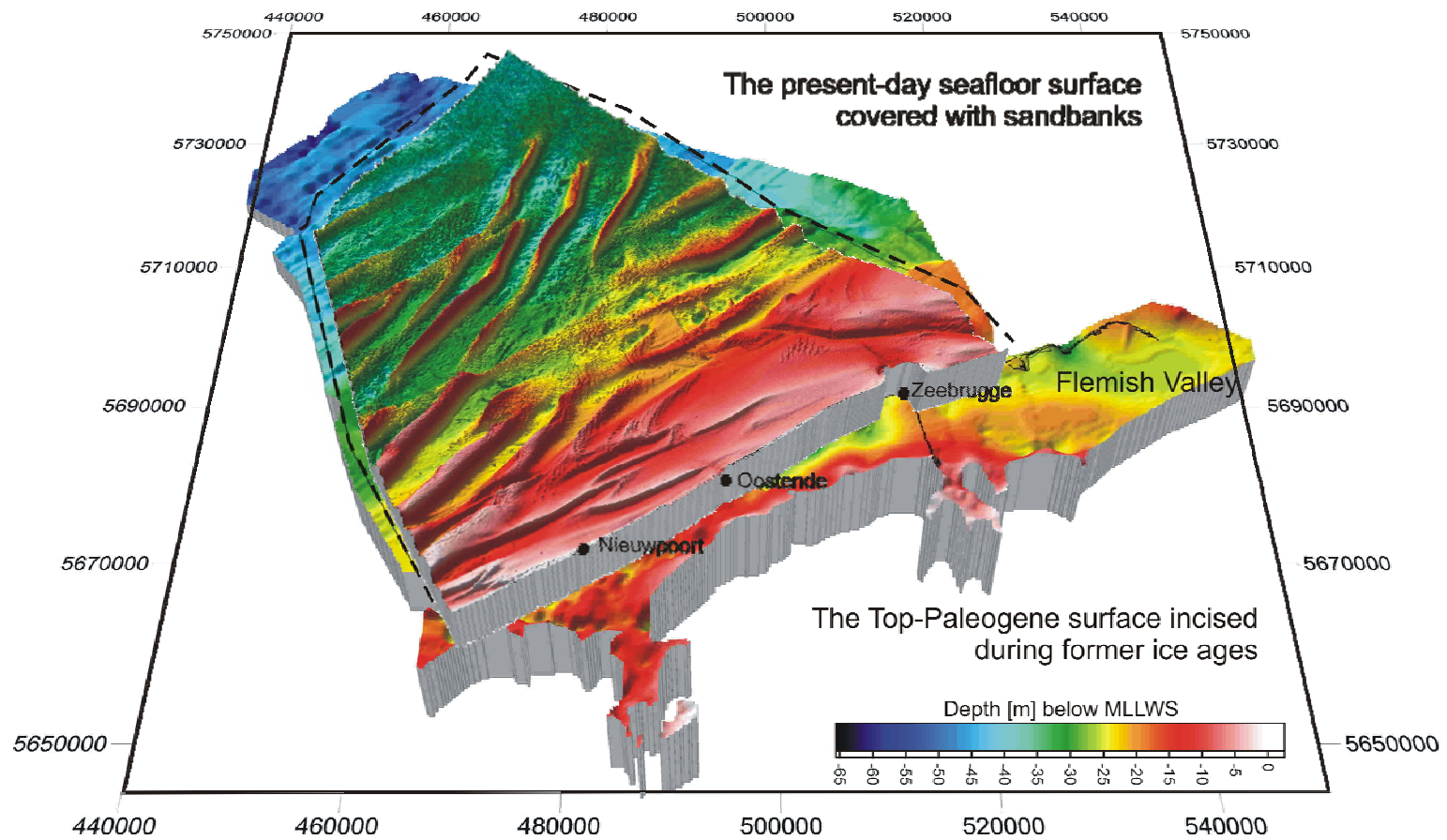
Mieke Mathys

promoter: Prof. Marc De Batist

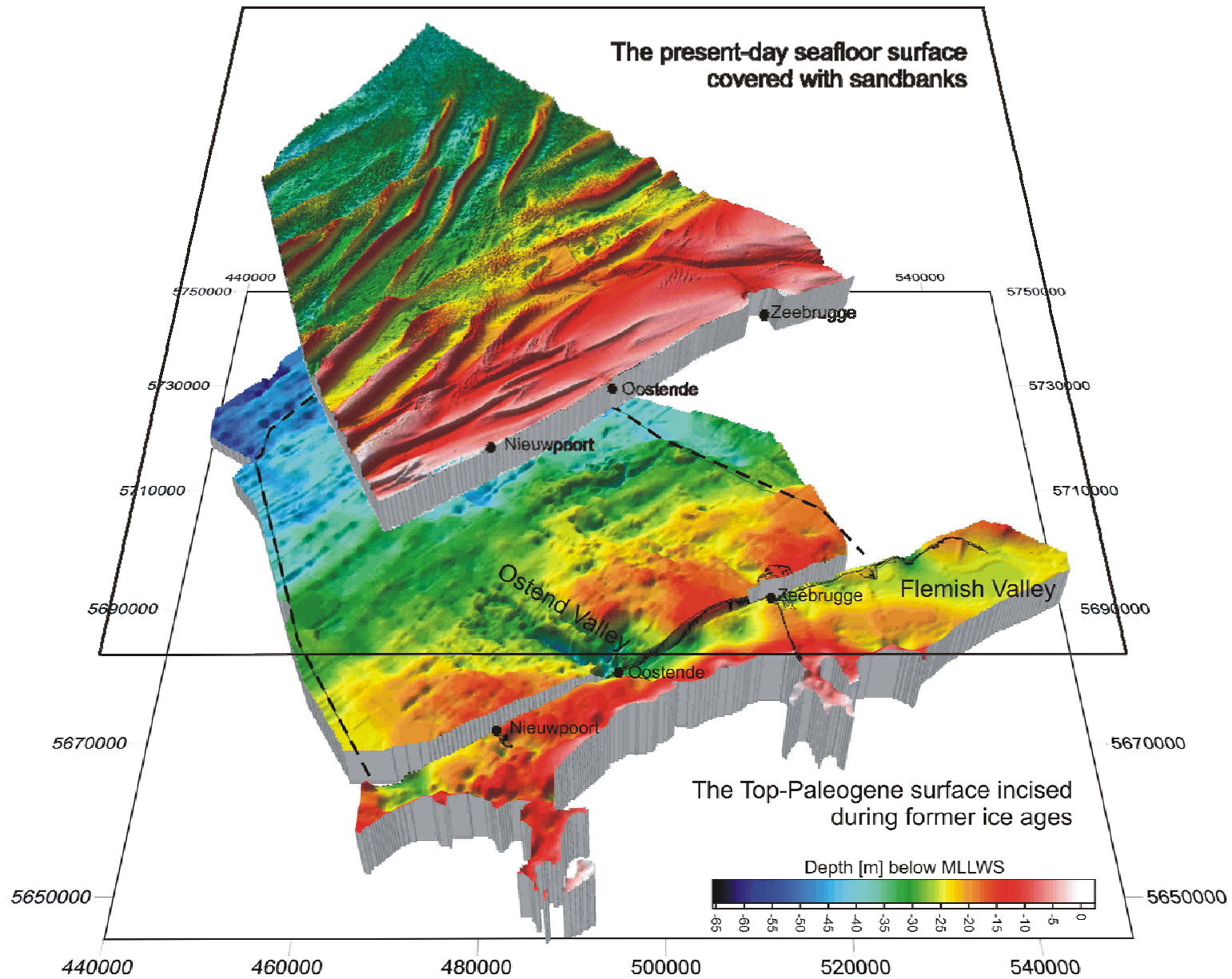
co-promoter: Prof. Cecile Baeteman



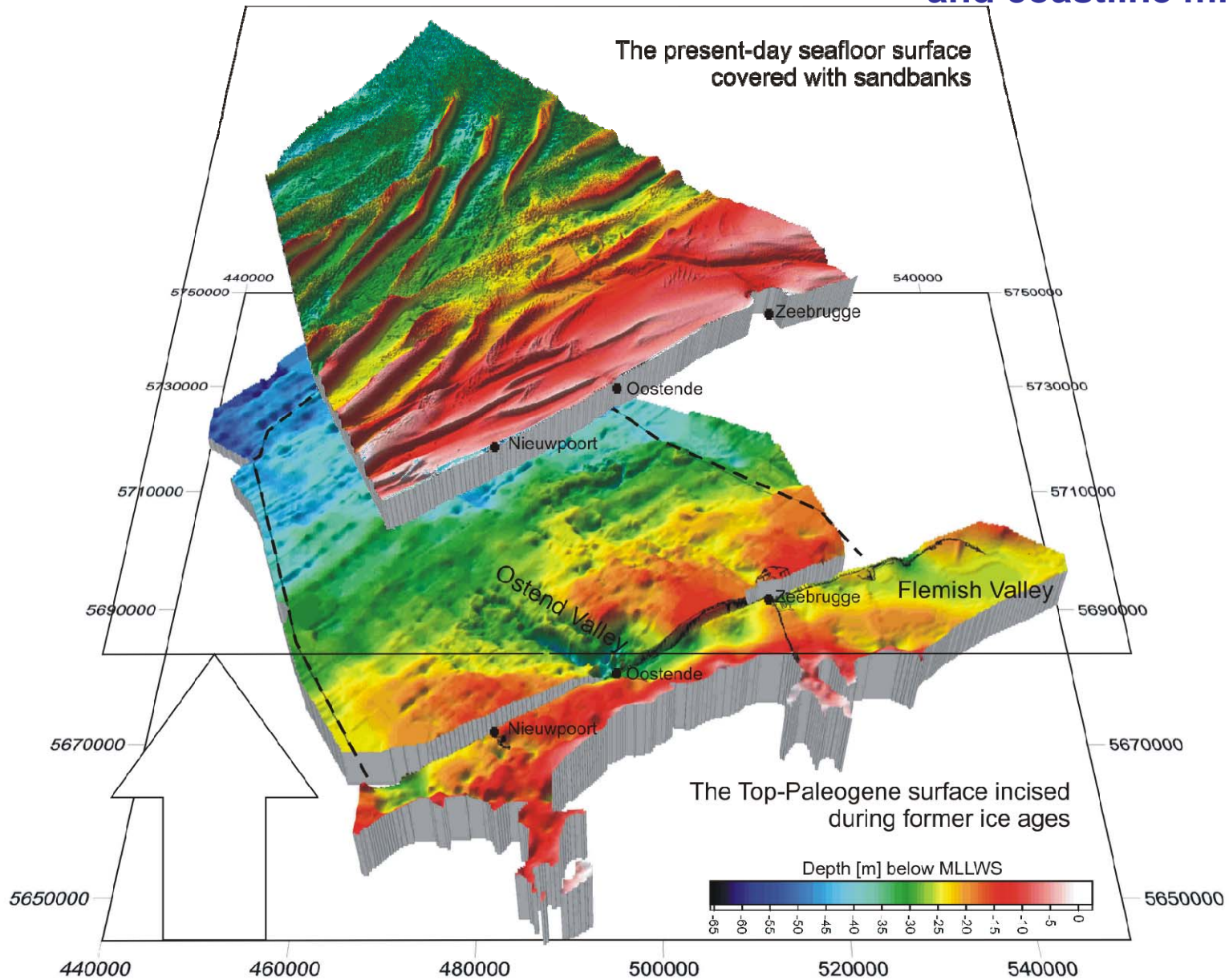
The present-day seafloor



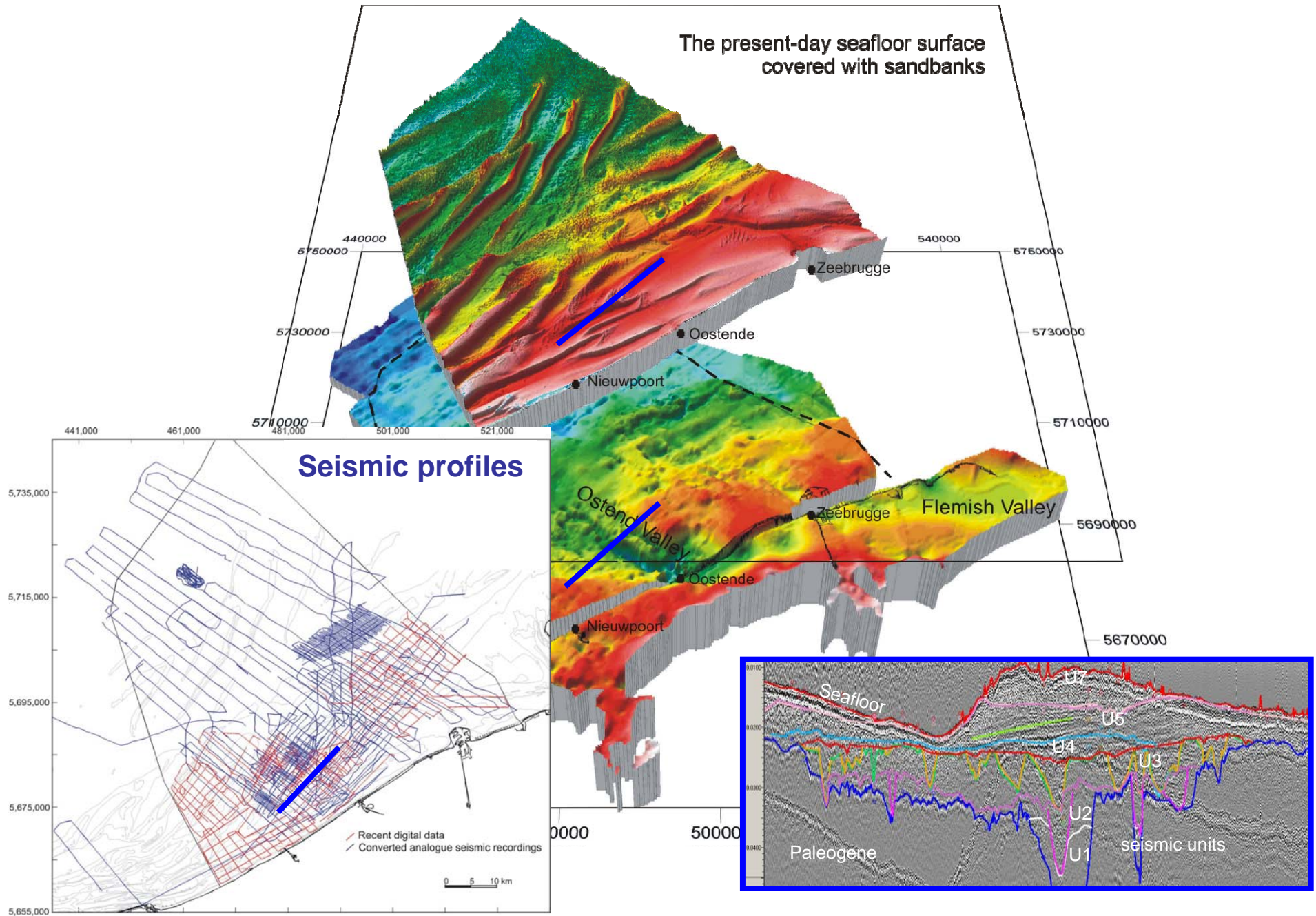
Landscape 150.000 years ago



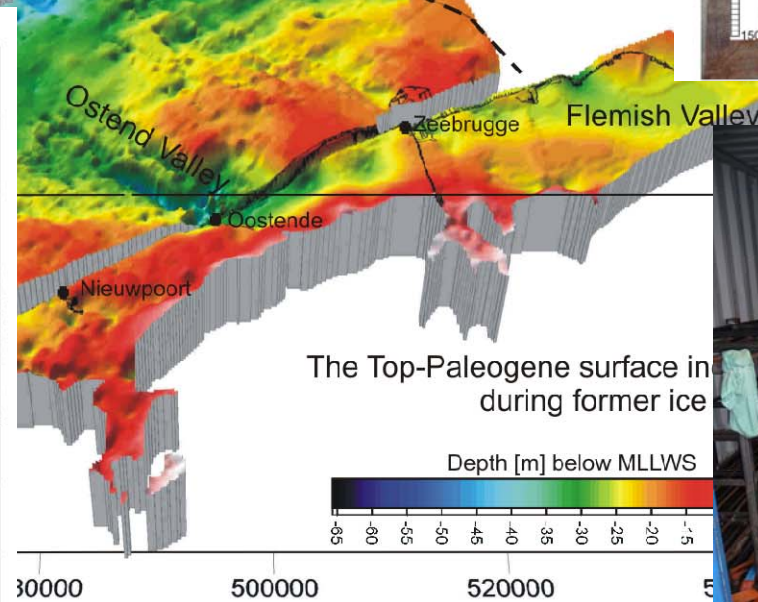
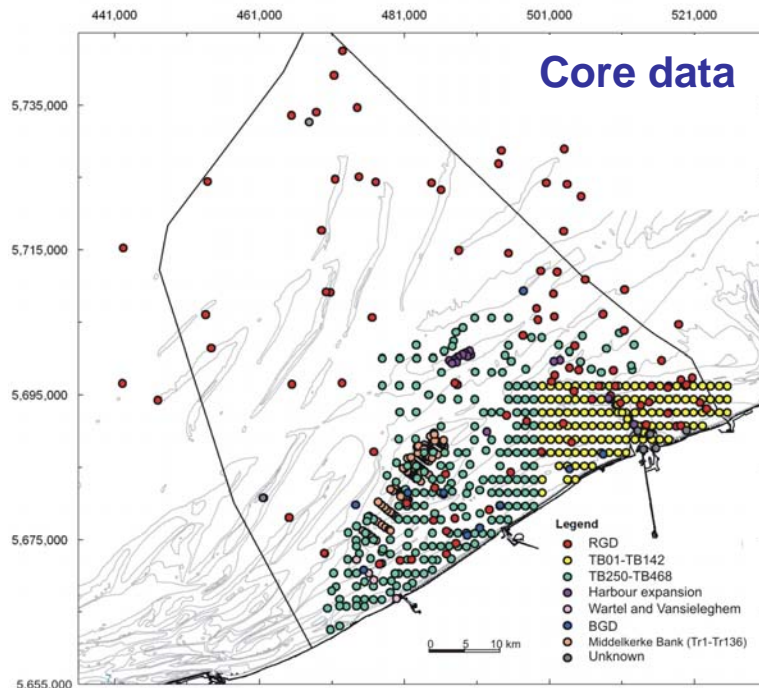
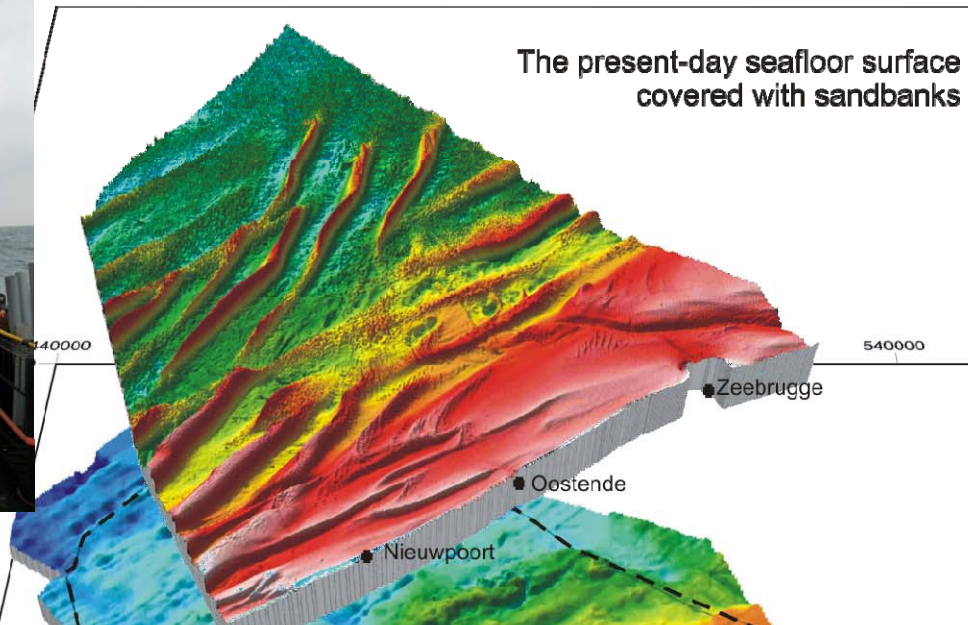
WHAT? Reconstructing the geological evolution and coastline migration



HOW? Integrating seismic and core data



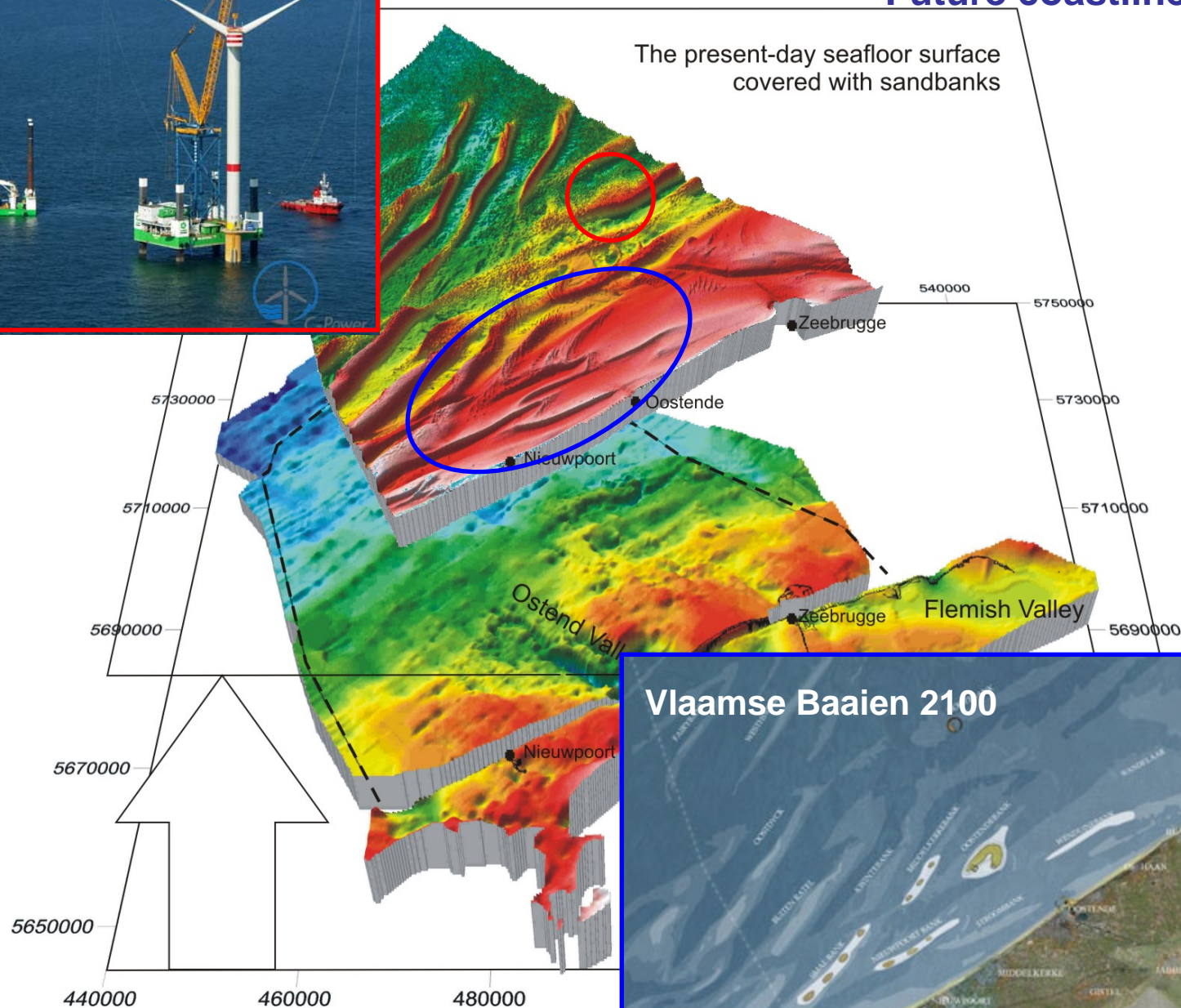
HOW? Integrating seismic and core data



Windmill farms



WHY? - Practical applications
- Future coastline evolution



Vlaamse Baaien 2100



