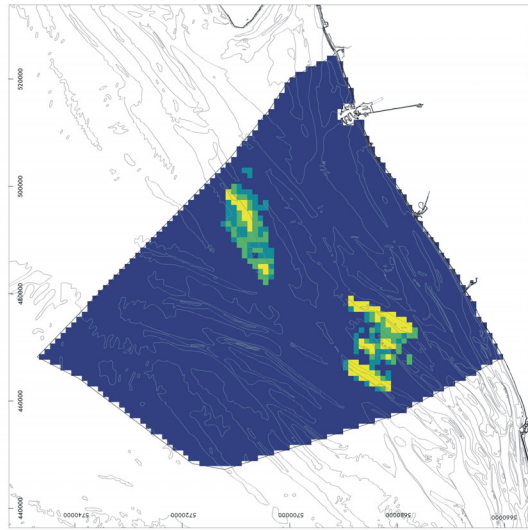
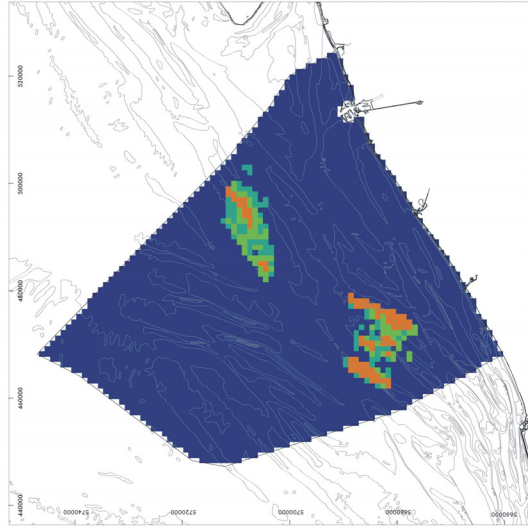


Impact maps - Sand extraction

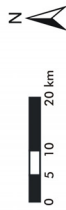
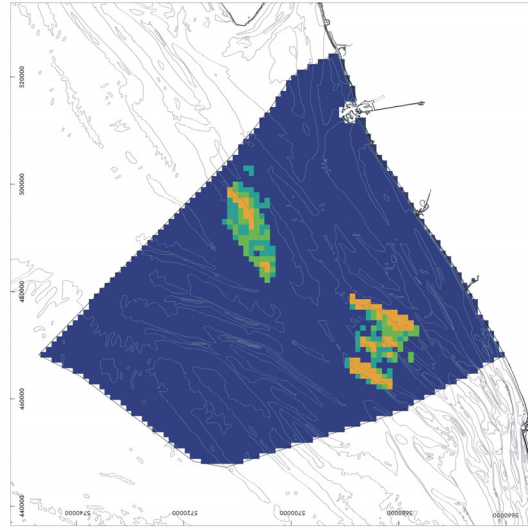
Chemical impact



Ecological impact



Physical impact



Relative impact value



High: 9

Low: 0



Original data source: Federal Public Service Economy, SMEs, Self-employed and Energy
 Ministry of the Flemish Community, Department of Environment and Infrastructure,
 Waterways and Marine Affairs Administration, Division Coast, Hydrographic Office
 Impact analysis: ECOLAS NV
 Map preparation: RCMG - Ghent University

Data cover sand extraction activities from 01 June 2002 - 31 December 2003

May 2005