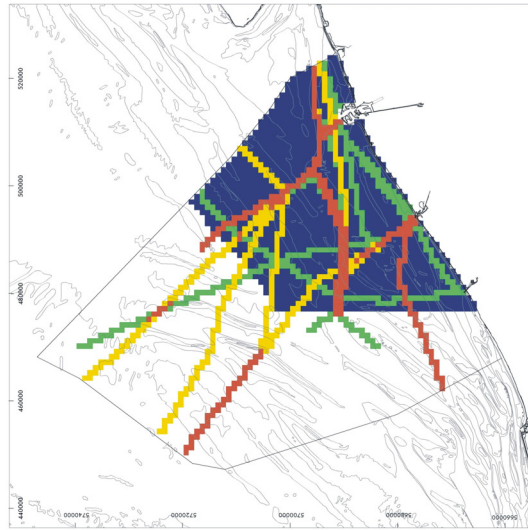
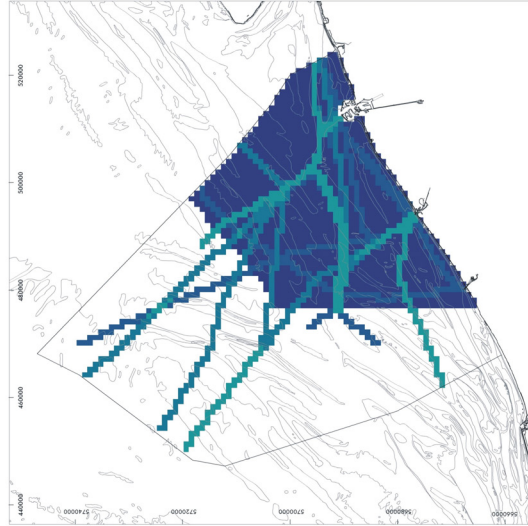


Impact maps - Shipping

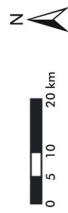
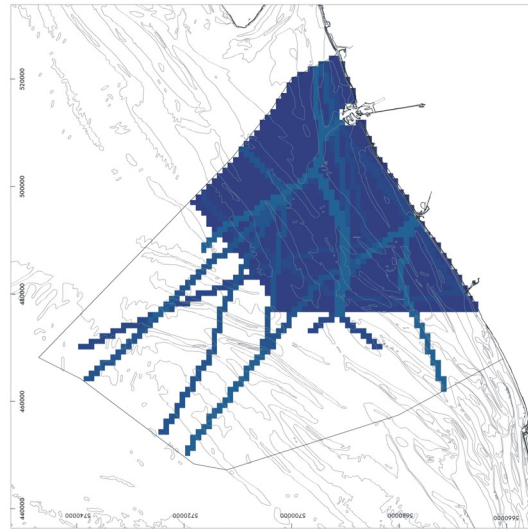
Chemical impact



Ecological impact



Physical impact



Relative impact value



High: 9

Low: 0



Original data source: IVS-SRK (Ministry of the Flemish Community & Dutch Ministry of Transport, Public Works and Water Management)
Transeuropa Ferries, Ferryways
Impact analysis: ECOLAS NV
Map preparation: RCMG - Ghent University

Shipping data cover merchant shipping from 01 April 2003 - 31 March 2004
May 2005