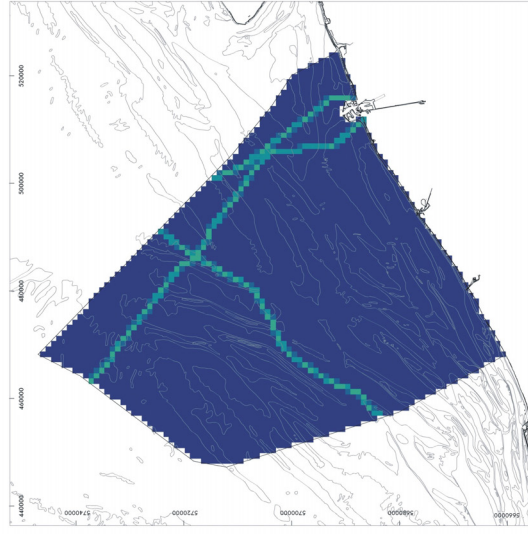
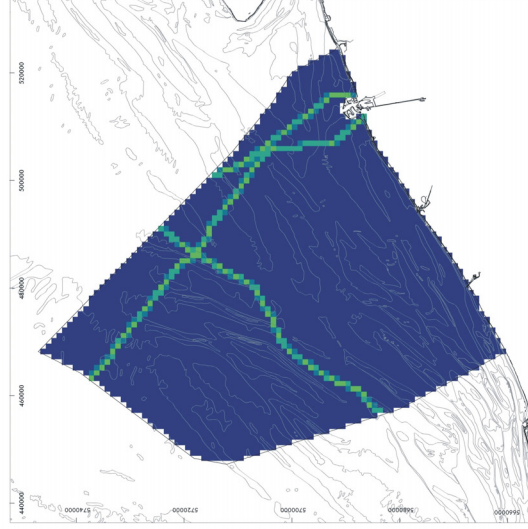


# Impact maps - Pipeline construction

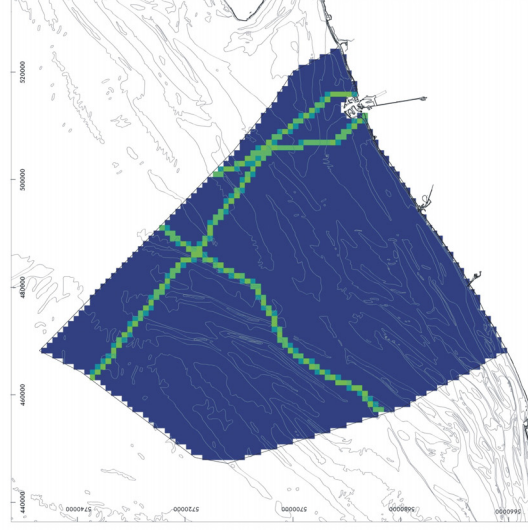
Chemical impact



Ecological impact



Physical impact



Relative impact value



High: 9

Low: 0



Original data source: Federal Public Service Economy, SMEs, Self-employed and Energy  
Ministry of the Flemish Community, Department of Environment and Infrastructure,  
Waterways and Marine Affairs Administration, Division Coast, Hydrographic Office  
Impact analysis: ECOLAS NV  
Map preparation: RCMG - Ghent University

May 2005