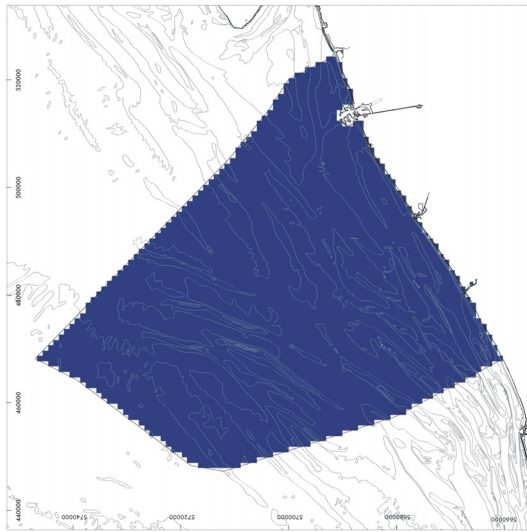
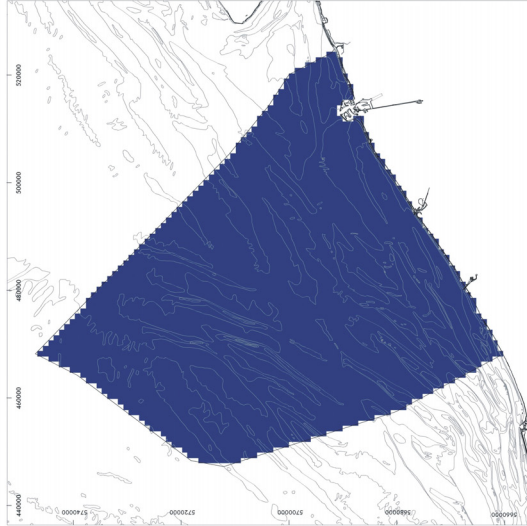


Impact maps - Pipeline exploitation

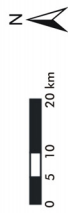
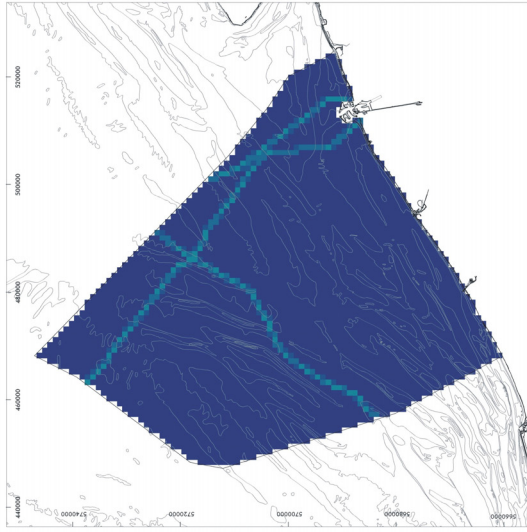
Chemical impact



Ecological impact



Physical impact



Relative impact value



High: 9

Low: 0



Original data source: Federal Public Service Economy, SMEs, Self-employed and Energy
 Ministry of the Flemish Community, Department of Environment and Infrastructure,
 Waterways and Marine Affairs Administration, Division Coast, Hydrographic Office
 Impact analysis: ECOLAS NV
 Map preparation: RCMG - Ghent University

May 2005