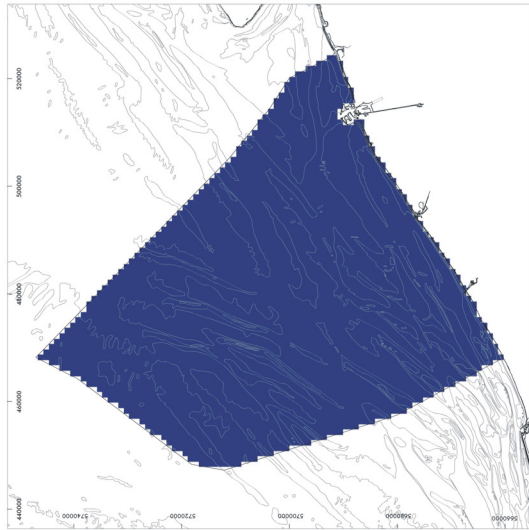
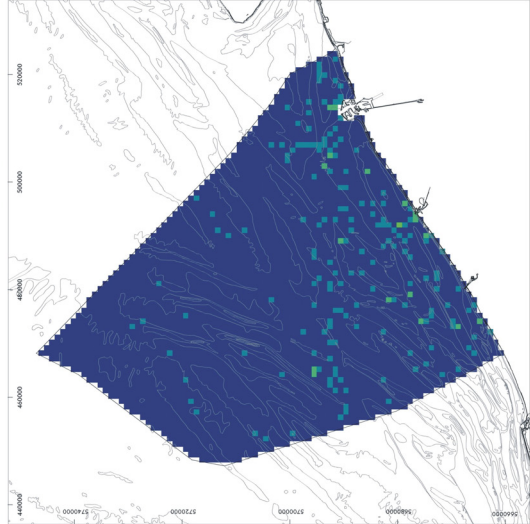


Impact maps - Wrecks

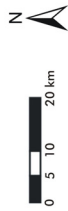
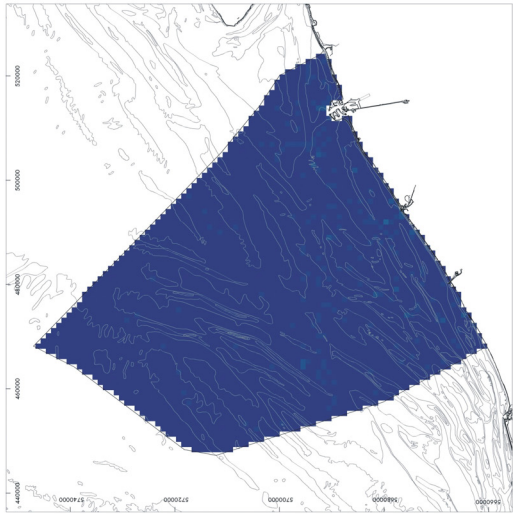
Chemical impact



Ecological impact



Physical impact



Relative impact value



High: 9

Low: 0



Original data source: Ministry of the Flemish Community, Department of Environment and Infrastructure, Waterways and Marine Affairs Administration, Division Coast, Hydrographic Office, "Wrecks on the Belgian Continental Shelf adapted up to BAZ 2003/07" (3 June 2003)

Impact analysis: ECOLAS NV

Map preparation: RCMG - Ghent University

May 2005