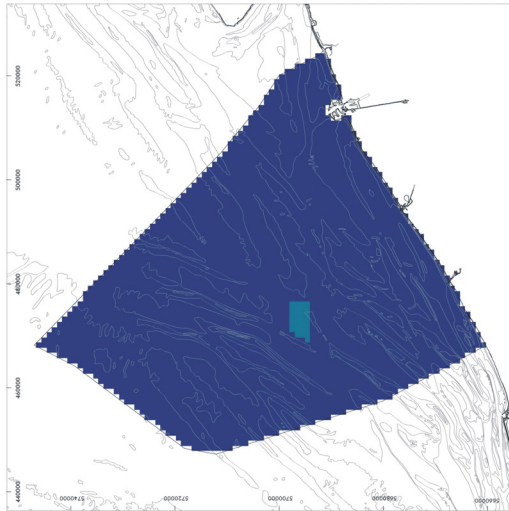
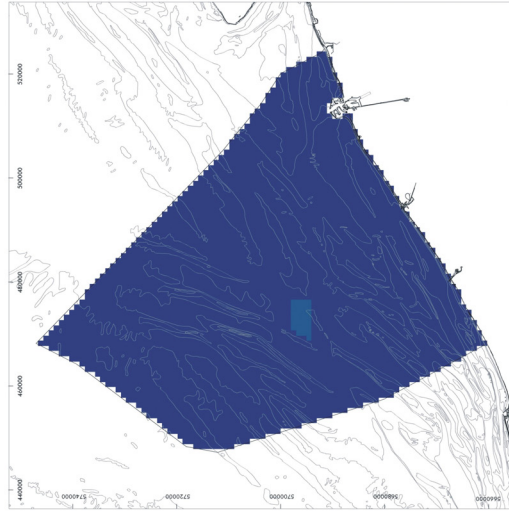


# Impact maps - Anchorage area

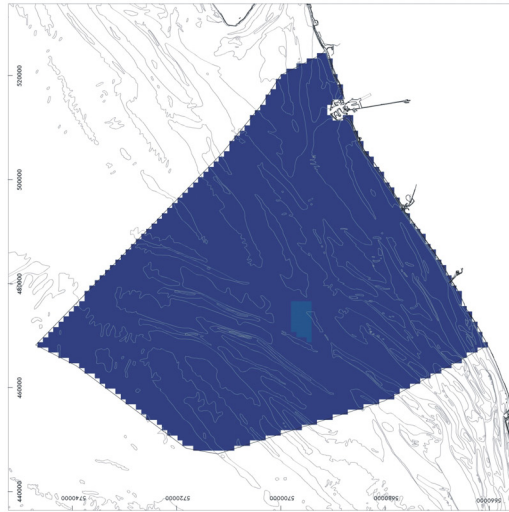
Chemical impact



Ecological impact



Physical impact



Relative impact value



High: 9

Low: 0



Original data source: IVS-SRK (Ministry of the Flemish Community & Dutch Ministry of Transport, Public Works and Water Management)  
Impact analysis: ECOLAS NV  
Map preparation: RCMG - Ghent University

Data cover anchorage activities from 01 April 2003 - 31 March 2004

May 2005