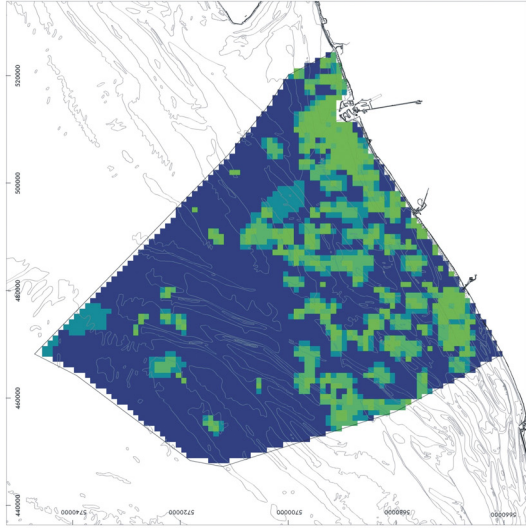
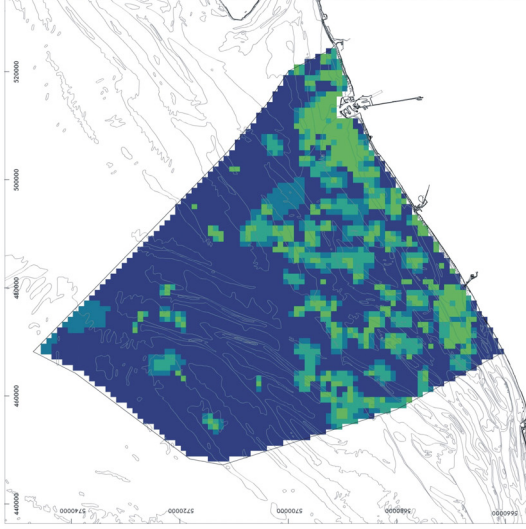


Impact maps - Recreational fisheries

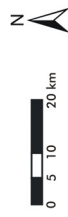
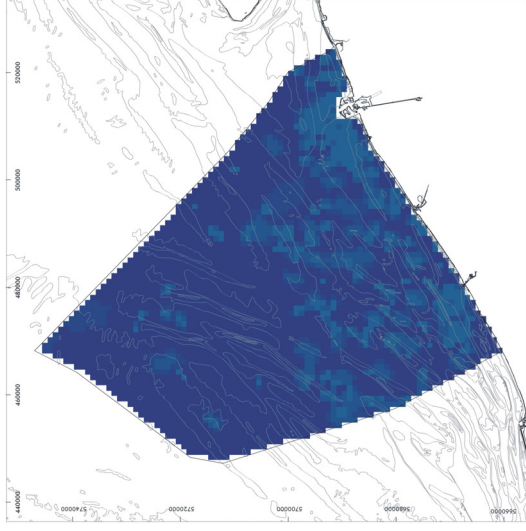
Chemical impact



Ecological impact



Physical impact



Relative impact value



High: 9

Low: 0

Original data source: Institute for Nature Conservation
Impact analysis: ECOLAS NV
Map preparation: RCMG - Ghent University

Data cover observed recreational fishery activities from 30 September 1992 - 25 July 2003
May 2005

