

Evaluation of the impact of electro shrimp trawl fishery

Desender Marieke^{1,3}, Hans Polet¹, Koen Chiers², Maarten Soetaert^{1,2}, Annemie Decostere³



¹ Institute for Agricultural and Fisheries Research (ILVO), Animal Sciences - Fisheries, Ankerstraat 1, 8400 Oostende, Belgium

² Department of Pathology, Bacteriology & Poultry Diseases, Faculty of Veterinary Medicine – Ghent University, Salisburylaan 133 Merelbeke, Belgium

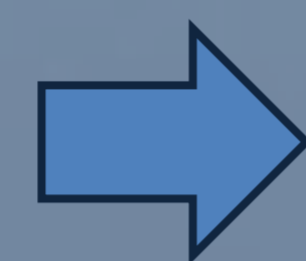
³ Department of Morphology, Faculty of Veterinary Medicine – Ghent University, Salisburylaan 133 Merelbeke, Belgium



1 Introduction

Electric pulse fields have proven to be the most promising option for alternative stimulation in fishing gear. Since 2008 ILVO has been successfully testing their **Hovercran** electro pulse trawl for brown shrimp (*Crangon crangon*).

- Low-frequency 5Hz Pulsed DC
- Provokes a startle response in the shrimps
- Elevated foot rope



35% reduction of by-catch
75% less seabed disturbance!

Electrical induced startle response trick field



By-catch reduction

2 Concerns?

The effect of pulse trawling on marine organisms is largely unknown.

- IMARES report: 7-11% spinal injury, lesions or mortality



in cod with flatfish pulse trawling (40Hz)

Higher pulse frequency, more injury risk! ?



3 Effects of “Hovercran” low frequency pulses?

No immediate effects in plaice, pogge, armed bullhead, dragonet, fivebeard rockling, cod and sole after exposure for 10s to a 60V/m, 5Hz pulse :

- Minor and brief fright reactions
- No mortality or spinal injury
- 0,5% - 1% haemorrhages in resp. sole and plaice



4 Future Research:

To lift the standing ban on electrofishing, **additional information is still needed!**

WP 1: Fright reaction in **heterogeneous** field?

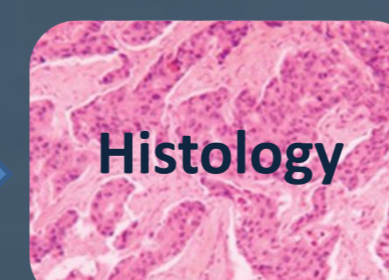
- Closer to the electrode the field strength is stronger
- Can fish avoid contact with the electrodes?



Orientation !



Behaviour analysis



Histology

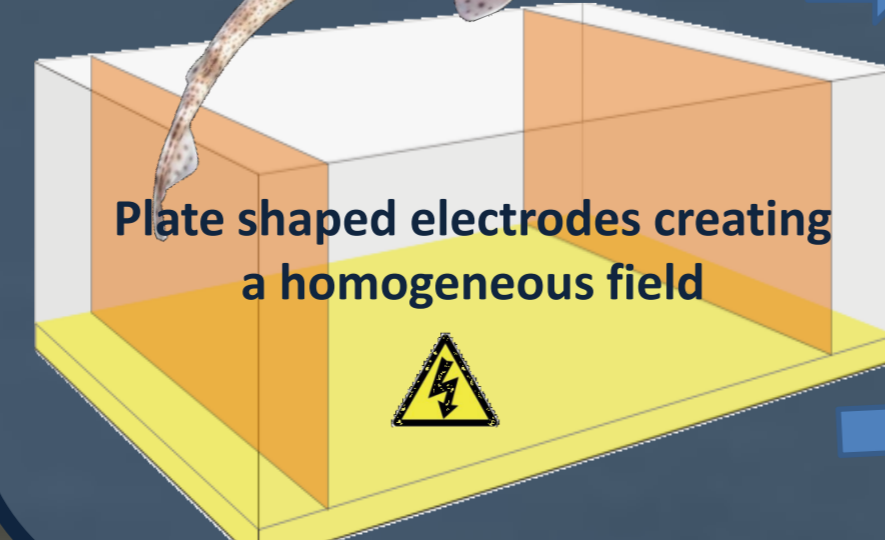


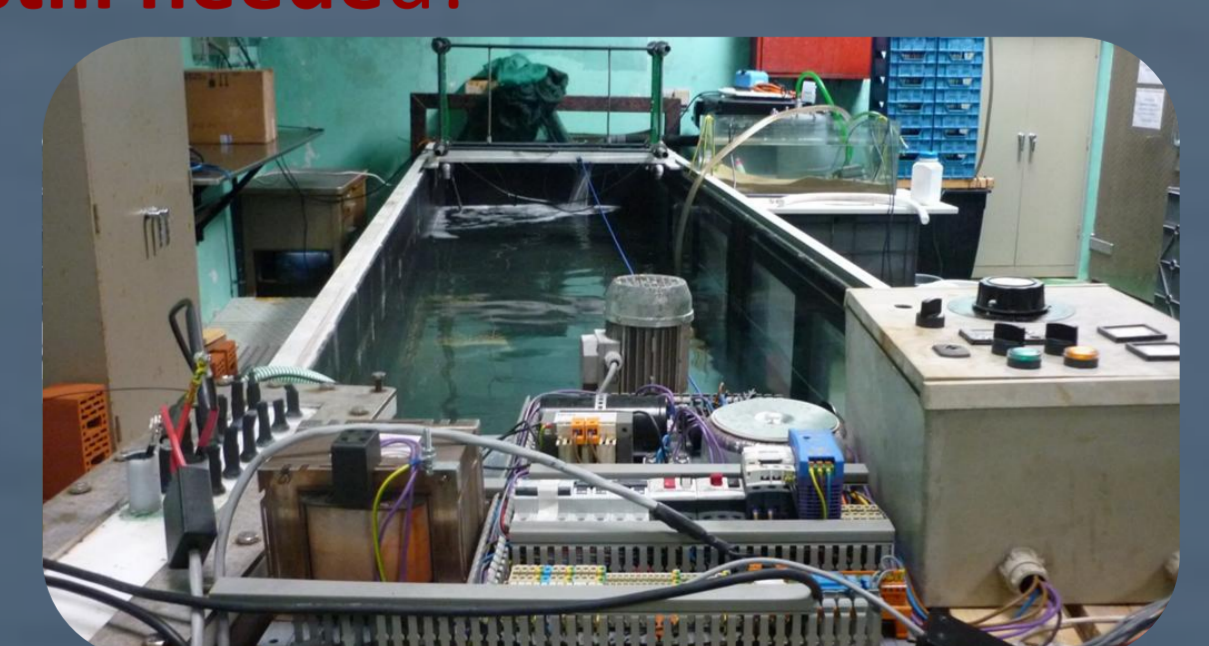
Plate shaped electrodes creating a homogeneous field



WP 2: Impact on **invertebrates** (sandworm) and **electrosensitive fish** (dogfish & thornback ray) in a homogeneous field

WP3: Also **embryo's, larvae and juveniles** of cod, sole, sandworm and brown shrimp will be included.

- Behavioural analyses: feeding response + activity
- Macroscopic & microscopic organ examination



WP1: Exposure in heterogeneous field