

BULLETIN DE L'INSTITUT ROYAL
DES SCIENCES NATURELLES
DE BELGIQUE

BULLETIN VAN HET KONINKLIJK
BELGISCH INSTITUUT VOOR
NATUURWETENSCHAPPEN

SCIENCES DE LA TERRE
AARDWETENSCHAPPEN
VOL. 66

BRUXELLES 1996 BRUSSEL



BULLETIN DE L'INSTITUT ROYAL
DES SCIENCES NATURELLES
DE BELGIQUE

BULLETIN VAN HET KONINKLIJK
BELGISCH INSTITUUT VOOR
NATUURWETENSCHAPPEN

SCIENCES DE LA TERRE
AARDWETENSCHAPPEN
VOL. 66

BRUXELLES 1996 BRUSSEL



Rédacteur en chef - Hoofdredacteur - *Editor*:
Annie V. DHONDT

Secrétaires de rédaction - Redactiesecretarissen - *Associate editors*:
Jacques GODEFROID

Comité de rédaction - Redactiecomité - *Editorial board*:
Pierre BULTYNCK
Daniel CAHEN
Michel DELIENS

Comité international - Internationaal comité - *Consulting editors*:
Denise BRICE (Lille, France)
C. Howard C. BRUNTON (London, UK)
William T. DEAN (Cardiff, UK)
Gerhard HAHN (Marburg, FRG)
Thomas R. WALLER (Washington DC, USA)

La rédaction remercie pour lecture critique de manuscrits:
De redactie dankt volgende reviewers voor medewerking aan dit volume:
For this volume the following reviewers are gratefully acknowledged:

M. BENTON, A. BALINSKI, A. BOUCOT, H. CAPPETTA, W.T. DEAN, R. FEIST, J. GARCIA-ALCALDE, Danièle GASPARD,
Helga GROOS-UFFENORDE, J.M. HANCOCK, J. JAGT, Marie LEGRAND-BLAIN, B. MISTIAEN, S. MOLYNEUX,
Bettina REICHENBACHER, A.W.A. RUSHTON, L. SANCHEZ DE POSADA, F. SOTO, F. SURLYK.

BULLETIN
DE L'INSTITUT ROYAL DES SCIENCES NATURELLES DE BELGIQUE
SCIENCES DE LA TERRE

BULLETIN
VAN HET KONINKLIJK BELGISCH INSTITUUT VOOR NATUURWETENSCHAPPEN
AARDWETENSCHAPPEN

Vol. 66 - 1996

ISSN 0374-6291

Publié, verschenen, *published*: 1.VI.1996

© Edition de
l'Institut Royal des Sciences Naturelles
de Belgique
Rue Vautier 29
B-1000 Bruxelles, Belgique

© Uitgave van het
Koninklijk Belgisch Instituut voor
Natuurwetenschappen
Vautierstraat 29
B-1000 Brussel, België

BARANOV, V.V. & SARTENAER, P. *Momarhynchus*, new Lower famennian rhynchonellid brachiopod genus from Yakutia

37

BRZOBOHATY, R. & NOLF, D. Otolithes de myctophidés (poissons téléostéens) des terrains tertiaires d'Europe: révision des genres *Benthoosema*, *Hygophum*, *Lampadena*, *Notosopelus* et *Symbolophorus*. [Myctophid otoliths (teleostean fishes) from the European Tertiary: revision of the genera *Benthoosema*, *Hygophum*, *Lampadena*, *Notosopelus* et *Symbolophorus*.]

151

COEN-AUBERT, M. Siphonophrentides et Cyathophyllides près de la limite Eifelin-Givetien à Resteigne (Ardenne, Belgique) [Siphonophrentids and Cyathophyllids near the Eifelian-Givetian boundary at Resteigne (Ardenne, Belgium)]

19

DELIENS, M. & PIET, P. Les Masuyites de Shinkolobwe (Shaba, Zaïre) constituent un groupe formé de deux variétés distinctes par leur composition chimique et leurs propriétés radiocristallographiques. [The masuyites from Shinkolobwe (Shaba, Zaïre) represent a group of varieties which are different in chemical composition and radiocristallographic characteristics]

187

GEYS, J. F. A Pygasteroid echinoid from Cenomanian strata in the Mons Basin (Belgium)

93

LETHIERS, F. & CASIER, J.-G. Les Ostracodes qui disparaissent avec l'événement Frasnien/Famennien au limitotype de Coumiac (Montagne Noire, France) [Ostracods that disappear at the Frasnian/Famennian transition at the boundary stratotype in Coumiac (Montagne Noire, France)]

73

LINGHAM-SOLIAR, T. The first description of *Halisaurus* (Reptilia, Mosasauridae) from Europe, from the Upper Cretaceous of Belgium

129

MARQUET, R. The family Triphoridae in the Neogene of Belgium (Mollusca, Gastropoda)

137

MARTIN, F. (1937-1994). List of publications

15

MARTIN, F. Recognition of the acritarch-based "*trifidum* flora" (Ordovician) in the absence of the eponymous species

5

PUSHKIN, V. I. *Pripyatspirifer*, a new Lower Famennian genus of the Republic of Belarus

43

SARTENAER, P. & PLODOWSKI, G. Restatement of the Late Tournaisian *Spirifer tornacensis* de Koninck, 1883 on the base of the original collection

53

SIMON, E. *Cyclothyris elegans* (von Hanstein, 1879) and *Cretirhynchia tenuicostata* (von Hanstein, 1879), two valid Lower Maastrichtian rhynchonellid brachiopods from the phosphatic chalk of Ciply, Belgium

97

SMITH, R., SMITH, T. & SUDRE, J. *Diacodexis gigasei* n. sp., le plus ancien Artiodactyle (Mammalia) belge, proche de la limite Paléocène-Eocène. [*Diacodexis gigasei* n. sp., the oldest Belgian artiodactyl (Mammalia), found near the Palaeocene-Eocene transition]

177

WARTEL, S., SETHI, P.S. & BOGEMANS, F. Clay fabric as an indicator of cyclic changes in an estuarine palaeoenvironment - Lower Pleistocene, northern Campine area, Belgium

193

ZAKHAROV, Y. D., IGNATYEV, A. V., UKHANEVA, N. G. & AFANASEVA, T. B. Cretaceous ammonoid succession in the Far East (South Sakhalin) and the basic factors of syngensis

109

Short Contributions:

DELSATE, D. & JAGT, J. W. M. A note on an early Jurassic ophiuroid from Rachecourt (Lorraine, Belgium)

203

Recognition of the acritarch-based “*trifidum* flora” (Ordovician) in the absence of the eponymous species

by Francine MARTIN †

(edited by William T. DEAN)

Abstract

The term “*trifidum* flora” was based on acritarchs from, possibly, the *Tetraraptus approximatus* Biozone of northwest England. It has been suggested as an index horizon for the base of the Arenig Series but may represent a number of assemblages of slightly different age, and the index species, *Stelliferidium trifidum*, first described from the Tremadoc Series of Shropshire, is not always present. The diagnostic potential of other acritarchs, especially *Peteinosphaeridium* sp., is noted and relevant material from south central and southeast Turkey reviewed.

Key-words: “*trifidum*” flora, acritarchs, Tremadoc-Arenig.

Résumé

La “flore à *trifidum*” a été définie sur base d’acritarches dont la provenance possible est la Biozone à *Tetraraptus approximatus* du nord-ouest de l’Angleterre. Elle a été proposée comme horizon-index de la base de la série arénigienne. Elle peut cependant réunir des assemblages d’âge légèrement différent et de l’espèce-index, *Stelliferidium trifidum*, dont la première description se base sur du matériel provenant de la Série trémadocienne du Shropshire, n’est pas toujours présente. Le potentiel diagnostique d’autres acritarches, particulièrement de *Peteinosphaeridium* sp., est signalé et du matériel significatif, provenant des parties centrale et orientale du sud de la Turquie, est révisé.

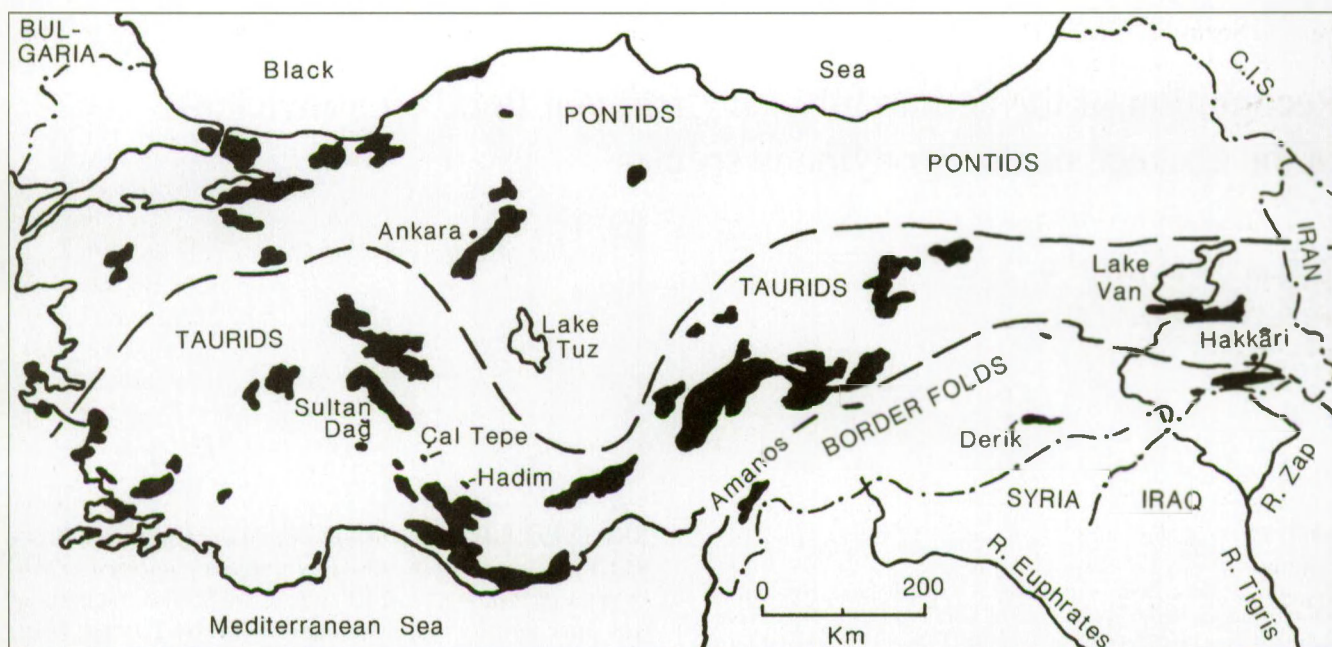
Mots-clefs: “flore à *trifidum*”, acritarches, Tremadoc-Arenig.

Introduction

The acritarchs now considered were first recognised as a distinct group, under the name “Watch Hill assemblage”, by MOLYNEUX & RUSHTON (1988, p. 47, table 2), who listed a number of species from the Watch Hill Grits in northwest England, representing an interval that may correspond to the *Tetraraptus approximatus* Biozone, generally accepted as lowest Arenig (WILLIAMS *et al.*, 1994). Seven species considered by MOLYNEUX & RUSHTON to be “particularly characteristic” comprised *Acanthodiacrodium? dilatatum* MOLYNEUX in MOLYNEUX & RUSHTON, 1988, *Caldariola glabra* (MARTIN) MOLYNEUX in MOLYNEUX & RUSHTON, 1988, *Cymatiogalea deunffii* JARDINÉ *et al.*, 1974, *C. messaoudii* JARDINÉ *et al.*, 1974, *Stellechinatum sicaforme* MOLYNEUX in MOLYNEUX & RUSHTON, 1988, *Stelliferidium trifidum* (RASUL)

RASUL, 1979, *Tetraniveum arenigum arenigum* (VAVRDOVA) VAVRDOVA, 1976, and *T. arenigum cumbriense* MOLYNEUX in MOLYNEUX & RUSHTON, 1988. The assemblage was later termed “the *trifidum* flora” by FORTEY *et al.* (1991, p. 10), named for *Stelliferidium trifidum* (RASUL) FENSOME *et al.*, 1990, the only species listed by MOLYNEUX & RUSHTON from all their cited localities in the English Lake District, and was said to occur also in South Wales, the Isle of Man and, probably, southwestern Spain, where it was considered to be of “great stratigraphic potential” in recognising the base of the Arenig in parts of Gondwanaland. An assemblage “very similar” to the *trifidum* flora was recognised in boreholes on the Island of Rügen, northeast Germany, by SERVAIS & KATZUNG (1993, p. 720), who illustrated selected taxa, and the published data were summarised by SERVAIS (1994). More recently COOPER *et al.* (1995) recognised in the English Lake District a *Cymatiogalea messaoudii*-*Stelliferidium trifidum* assemblage, divided into five subassemblages and equivalent to the “*trifidum* flora”; it is succeeded by a *Stelliferidium trifidum*-*Coryphidium bohemicum* assemblage in which *Coryphidium bohemicum* and *Striatotheca principalis parva* appear but *C. messaoudii* is absent. Compared with the species lists of MOLYNEUX & RUSHTON (1988), those of COOPER *et al.* (1995) referred *Tetraniveum arenigum* and its subspecies to *Vavrdovella*, following LOEBLICH & TAPPAN (1976), and *Caldariola glabra* was omitted.

Present evidence suggests that the term “*trifidum* flora” encompasses a group of assemblages which may differ in composition and span a relatively broad age, and it may be more appropriate to refer to “a” rather than “the” *trifidum* flora. In the Shineton Shale Formation, from which it was described (RASUL, 1974, p. 60), *Stelliferidium trifidum* was recorded only from the *Shumardia* (*Conophrys*) *salopiensis* Biozone, in which the species is very rare (author’s observations). Later, RASUL (1979, p. 70) noted *S. trifidum* as stratigraphically important, being confined to Zone 7, highest but one of his acritarch-based zones of the Tremadoc Series in south Shropshire and corresponding to the lower half of the *S. (C.) pusilla* Biozone. *Stelliferidium trifidum* is most often cited from “the *trifidum* flora”, but its absence higher than their *S.*



Text-fig. 1 — Outline map of Turkey, showing location of Hadim, in the central Taurids, and the Şort Tepe area, near the Zap Valley, southeastern Turkey. Principal structural subdivisions after KETIN (1966) and OKAY (1986).

trifidum - *C. bohemicum* assemblage in northwest England was noted by COOPER *et al* (1995). The species appears to have a limited geographic distribution and was not recorded from appropriate parts of the Barriga Formation in southwest Spain (METTE, 1989) or of the Seydisehir Formation in the Hadim and Zap Valley areas, south-central and southeastern Turkey respectively, for which preliminary comments were given by MARTIN (in DEAN & MARTIN, 1992, p. 198): all these areas are interpreted as having formed part of peri-Gondwanaland. The present paper reviews briefly the stratigraphic potential for recognising assemblages corresponding to "the *trifidum* flora" when the nominal species is apparently absent.

Notes on relevant acritarchs

In the following notes, taxa are alphabetically arranged and those marked by an asterisk (*) were stated by MOLYNEUX & RUSHTON (1988) to be particularly characteristic of the "*trifidum* flora"; those with a cross (X) are among selected taxa listed by SERVAIS (1994) from Rügen, northeast Germany. Where practical, first appearances are noted, but macrofossil control of age is often unavailable. Selected taxa found in Turkey and Shropshire are shown in Table I, and most are illustrated in Plate 1.

(*X) *Acanthodiacrodium? dilatatum* MOLYNEUX in MOLYNEUX & RUSHTON, 1988 (Pl. 1, Figs. 9, 10, 13, 17). Recorded by COOPER *et al.* (1995) only from their *C.*

messauddii - *S. trifidum* assemblage and the succeeding *S. trifidum* - *C. bohemicum* assemblage in north-western England, a range which traverses the Tremadoc/Arenig boundary. In southern Turkey the species was found both near Hadim and in the Zap Valley. *A.? dilatatum* was recorded from the "*trifidum* flora" at Rügen, northeast Germany (SERVAIS, 1994), where, as elsewhere, stratigraphic control is essentially palynological.

(*X) *Caldariola glabra* (MARTIN) MOLYNEUX in MOLYNEUX & RUSHTON, 1988. Described initially from the Tremadoc of southern France; found in the *Shumardia* (*Conophrys*) *salopiensis* Biozone of Shropshire, U.K., and at all four localities sampled in the Hadim and Zap Valley areas, southern Turkey. The species is one of those said by MOLYNEUX & RUSHTON (1988) to be characteristic of the Watch Hill assemblage but was not listed by COOPER *et al.* (1995).

Coenobial acritarchs *sensu* DI MILIA, 1991 (Pl. 1, Fig. 22). Found at Z.401, Zap Valley, southeastern Turkey. Elsewhere in southern Turkey, similar specimens have been found in the Middle Cambrian of the Penbeğli-Tut inlier, east of Kahramanmaraş (F.M., in preparation) and it is not known whether their presence at Z-401 is due to reworking or to their being ubiquitous and long-ranging.

Coryphidium sp. (Pl. 1, Figs. 12, 18). Several species are represented in both the Hadim and Zap Valley areas, those from the latter including *C. cf. elegans* CRAMER *et al.*, 1974 (Pl. 1, Fig. 16), recorded as *C. elegans* by MARTIN (in DEAN & MARTIN, 1992, p. 198). In south-

western Spain *C. elegans*, shown by METTE 1989, pp. 3, 4) as appearing at the base of the Arenig, was said by him to be “among the most indicative species of the Arenig in Europe and North Africa”, though its range is essentially palynologically dated. METTE (1989) showed *C. elegans* to range from the basal Arenig to lower Llanvirn, and his list of Tremadoc/Arenig species included both *C. aff. elegans* and *Peteinosphaeridium* sp. *C. cf. elegans* was recorded by COOPER *et al.* (1995, p. 190) from only the two highest sub-assemblages (4 and 5) of their *C. messaoudii* - *S. trifidum* assemblage.

Cymatiogalea deunffii JARDINÉ *et al.*, 1974 (Pl. 1, Fig. 1). First appearance probably in strata of the Barriga Formation, southwestern Spain (METTE, 1989), dated by means of graptolites as “within the Tremadoc/Arenig Boundary interval” (ERDTMANN *et al.*, 1987). Widespread in peri-Gondwana, from Algeria to northeast Germany, but found only in the Zap Valley during the present sampling.

(*X) *Cymatiogalea messaoudii* JARDINÉ *et al.*, 1974. Described from Zone B1 - Argilo-gréseux d'El Louha, 'lower Tremadoc', Algeria. In the Barriga Formation of southwestern Spain the species was recorded with confidence only from the lowest Arenig (METTE, 1989, p. 3), and in southern Turkey it was found in both the Hadim and Zap Valley (Pl. 1, Figs. 2, 3, 6) areas. In northwest England *C. messaoudii* was shown by COOPER *et al.* (1995) to be restricted to their *C. messaoudii* - *S. trifidum* assemblage.

(*) *Dactylofusa velifera* COCCHIO, 1982. Found in both the Zap Valley (Pl. 1, Figs. 11, 14, 20) and Hadim (Pl. 1, Fig. 15) areas of southern Turkey. In the Barriga Formation of southwest Spain the species was shown by METTE (1989) to extend from the upper Tremadoc to the middle of the Arenig.

Peteinosphaeridium sp. (Pl. 1, Figs. 4, 8) was found at all the listed localities in the Hadim area and Zap Valley. This form may conveniently be considered indicative of an Arenig age as it occurs with several species (Table 1) said by MOLYNEUX & RUSHTON (1988) and by SERVAIS (1994, p. 571) to form part of the “*trifidum* flora”, though the genus is not among the selected taxa listed from the same area by COOPER *et al.* (1995). Elsewhere in peri-Gondwana the genus has been recorded (as *P. trifurcatum*) from the lower part (Arenig) of the Nant Ffrancon Formation in North Wales (MOLYNEUX, 1990),

and (as *P. palmatum* COMBAZ & PENIGUEL, 1972) from the highest Bell Island Group and lower Wabana Group (probably Arenig) of Bell Island, eastern Newfoundland (MARTIN *in* DEAN & MARTIN, 1978). In the East European Platform (PAALITS & ERDTMANN, 1993) *Peteinosphaeridium* sp. was said to appear approximately at the base of the Hunneberg Stage, redefined by LINDHOLM (1991). The first appearance of *Peteinosphaeridium* may have some stratigraphic potential as a basal Arenig indicator outside peri-Gondwana, judging from records (as *P. cf. P. breviradiatum*) in the Rocky Mountains of western Canada (MARTIN *in* DEAN & MARTIN, 1982; MARTIN, 1992). The carbonate succession there forms part of Laurentia on the basis of its macrofossils, and *Peteinosphaeridium* ranges from the upper part of trilobite-based Zone F to Zone J: in palynological terms it occurs in Microflora AU6 (characterised by the *Rhopaliophora pilata*, *R. palmata* and *Peteinosphaeridium* cf. *P. breviradiatum* assemblage). Other records of the genus from the Arenig in Australia, China and the Baltic region were noted by MARTIN (*in* MARTIN & DEAN, 1982; MARTIN, 1992).

(*X) *Stelliferidium trifidum* (RASUL) FENSOME *et al.*, 1990. First described from the *Shumardia* (*Conophrys*) *salopiensis* Biozone of Shropshire, U.K. (RASUL, 1974), where it was found to be very rare at SHIN-24 (Pl. 1, Fig. 7) in the Shineton Shale Formation (F.M. personal observation). The species is most often cited from the “*trifidum* flora” (see table 1 *in* SERVAIS, 1994), but does not appear in detailed lists from southwest Spain by METTE (1989), and in southern Turkey *S. aff. trifidum* (Pl. 1, Fig. 5) was found at only a single locality, HAD-11, near Hadim.

(*X for species) *Vavrdovella areniga* aff. subsp. *cumbriensis* (MOLYNEUX *in* MOLYNEUX & RUSHTON, 1988) COOPER *et al.*, 1995. Found in the *Shumardia* (*Conophrys*) *salopiensis* Biozone of Shropshire, U.K. (Pl. 1, Fig. 19), and in the Hadim and Zap Valley (Pl. 1, Fig. 21) areas of Turkey, where it was recorded (MARTIN *in* DEAN & MARTIN, 1992) as *Tetraniveum arenigum cumbriense*. In northwest England the species and subspecies were recorded by COOPER *et al.* (1995) as ranging from sub-assemblages 1 to 4 of their *C. messaoudii* - *S. trifidum* assemblage.

“*Vavrdovella* sp. - *Coryphidium* sp. transients”. Found only at Z-401., Zap Valley, southeastern Turkey, and their stratigraphic value has still to be demonstrated.

Table 1.

Distribution of selected acritarch taxa from cited localities in Shropshire, U.K., and southern Turkey.

	SHROPSHIRE		SOUTHERN TURKEY			
	Wrekin area		Hadim area			Zap Valley
	94-SHIN 21	94-SHIN 24	HAD -11	HAD -13	HAD -14	Z-401
<i>Acanthodiacrodium?</i> <i>dilatatum</i> MOLYNEUX in MOLYNEUX & RUSHTON, 1988	—	—	—	—	×	×
<i>Caldariola glabra</i> (MARTIN) MOLYNEUX in MOLYNEUX & RUSHTON, 1988	×	—	×	×	×	×
Coenobial acritarchs <i>sensu</i> DI MILIA, 1991.	—	—	—	—	—	×
<i>Coryphidium</i> (several spp.)	—	—	—	—	×	×
<i>Cymatiogalea deunffii</i> JARDINÉ <i>et al.</i> , 1974	—	—	—	—	—	×
<i>Cymatiogalea messaoudii</i> JARDINÉ <i>et al.</i> , 1974	—	—	×	—	—	×
<i>Dactylofusa velifera</i> COCCHIO, 1982	—	—	×	—	×	×
<i>Peteinosphaeridium</i> sp.	—	—	×	×	×	×
<i>Stelliferidium trifidum</i> (RASUL) FENSOME <i>et al.</i> , 1990	—	×	aff.	—	—	—
<i>Vavrdovella areniga</i> aff. subsp. <i>cumbriensis</i> (MOLYNEUX in MOLYNEUX & RUSHTON, 1988) COOPER <i>et al.</i> , 1995	—	×	—	×	×	×
“ <i>Vavrdovella</i> sp. – <i>Coryphidium</i> sp. transients”	—	—	—	—	—	×

Summary of conclusions

The so-called “*trifidum* flora”, often considered significant in recognising the base of the Arenig in peri-Gondwana, may include a number of assemblages that vary slightly in composition and age. *Stelliferidium trifidum*, the index species, has a long stratigraphic range (late Tremadoc to early Arenig) and is not always present in peri-Gondwana assemblages probably equivalent to the “*trifidum* flora”. Such assemblages from southern Turkey lack the index species *sensu stricto* but all contain several forms generally considered characteristic of the “*trifidum* flora” together with *Peteinosphaeridium* sp. The latter may be a convenient alternative indicator

of the Arenig or, possibly, Hunneberg Series, and the genus has the merit of being widely distributed, not only in peri-Gondwana but also in Laurentia, Baltica, Australia and China. The first appearance of *Coryphidium* may also be of supplementary value in peri-Gondwana, but is insufficiently well dated by means of macrofossils.

Acknowledgements

Samples from southern Turkey were collected thanks to the support of Turkish Petroleum Corporation (TPAO), Ankara. Dr Stewart Molyneux, British Geological Survey, kindly read the manuscript and made suggestions for its improvement.

References

- COCCHIO, A.-M. 1982. Données nouvelles sur les acritarches du Tremadoc et de l'Arenig dans le Massif de Mouthoumet (Corbières, France). *Revue de Micropaléontologie* **25**: 26-39.
- COMBAZ, A. & PENIGUEL, G. 1972. Etude palynostratigraphique de l'Ordovicien dans quelques sondages du Bassin de Canning (Australie occidentale). *Centre de Recherches de Pau, SNPA, Bulletin* **6**: 121-167.
- COOPER, A.H., RUSHTON, A.W.A., MOLYNEUX, S.G., HUGHES, R.A., MOORE, R.M. & WEBB, B.C. 1995. The stratigraphy, correlation, provenance and palaeogeography of the Skiddaw Group (Ordovician) in the English Lake District. *Geological Magazine* **132**: 185-211.
- CRAMER, F.H., ALLAM, B., KANES, W.H. & DIEZ, M.D.C.R. 1974. Upper Arenigian to Lower Llanvirnian acritarchs from the subsurface of the Tadla Basin in Morocco. *Palaeontographica B* **145**: 182-190.
- CRAMER, F.H. & DIEZ, M.D.C.R. 1976. Seven new late Arenigian species of the acritarch genus *Coryphidium* VAVRDOVA, 1972. *Paläontologische Zeitschrift* **50**: 201-208.
- DEAN, W.T. & MARTIN, F. 1978. Lower Ordovician acritarchs and trilobites from Bell Island, eastern Newfoundland. *Geological Survey of Canada, Bulletin* **284**: 1-35.
- DEAN, W.T. & MARTIN, F. 1982. The sequence of trilobite faunas and acritarch microfloras at the Cambrian-Ordovician boundary, Wilcox Pass, Alberta, Canada. Pp. 131-140 in BASSETT, M.G. & DEAN, W.T. (Editors). The Cambrian-Ordovician boundary: sections, fossil distributions, and correlations. *National Museum of Wales, Geological Series* **37**: 1-227.
- DEAN, W.T. & MARTIN, F. 1992. Ordovician biostratigraphic correlation in southern Turkey. Pp. 195-203 in WEBBY, B.D. & LAURIE, J.R. (Editors). Global perspectives on Ordovician Geology. Balkema, Rotterdam.
- DEAN, W.T., MARTIN, F., MONOD, O., GÜL, M.A., BOZDOĞAN, N. & ÖZGÜL, N. 1993. Early Palaeozoic evolution of the Gondwanaland margin in the western and central Taurids, Turkey. Pp. 262-272 in TURGUT, S. (Editor). Tectonics and hydrocarbon potential of Anatolia and surrounding regions. *Ozan Sungurlu Symposium Proceedings, November, 1991, Ankara*.
- DEAN, W.T., MONOD, O. & PERİNÇEK, D. 1981. Correlation of Cambrian and Ordovician rocks in south-eastern Turkey. Petroleum Activities at the 100th Year. *Türkiye Cumhuriyeti Petrol İşleri Genel Müdürlüğü Dergisi*, Ankara **25**: 269-291 (English), 292-300 (Turkish).
- DEAN, W.T. & ÖZGÜL, N. 1981. Middle Cambrian trilobite succession in the Çaltepe Formation at Bağbaşı (Hadim-Konya) central Taurus, Turkey. *Bulletin of the Mineral Research and Exploration Institute of Turkey* **92**: 1-6.
- DI MILIA, A. 1991. Upper Cambrian acritarchs from the Solanas Sandstone Formation, Central Sardinia, Italy. *Bollettino della Società Paleontologica Italiana* **30**: 127-152.
- FENSOME, R.A., WILLIAMS, G.L., BARSS, M.S., FREEMAN, J.M. & HILL, J.M. 1990. Acritarchs and fossil prasinophytes: an index to genera, species and infraspecific taxa. *American Association of Stratigraphic Palynologists Foundation, Contributions Series* **25**: 1-771.
- FORTEY, R.A. & OWENS, R.M. 1991. A trilobite fauna from the highest Shineton Shales in Shropshire, and the correlation of the latest Tremadoc. *Geological Magazine* **128**: 437-464.
- FORTEY, R.A., BASSETT, M.G., HARPER, D.A.T., HUGHES, R.A., INGHAM, J.K., MOLYNEUX, S.G., OWEN, A.W., OWENS, R.M., RUSHTON, A.W.A. & SHELDON, P.R. 1991. Progress and problems in the selection of stratotypes for the bases of series in the Ordovician System of the historical type area in the U.K. Pp. 5-25 in BARNES, C. R. & WILLIAMS, S. H. (Editors). Advances in Ordovician geology. *Geological Survey of Canada, Paper* **90-9**.
- JARDINÉ, S., COMBAZ, A., MAGLOIRE, L., PENIGUEL, G. & VACHEY, G. 1974. Distribution stratigraphique des acritarches dans le Paléozoïque du Sahara algérien. *Review of Palaeobotany and Palynology* **18**: 99-129.
- KETIN, I. 1966. Tectonic units of Anatolia (Asia Minor) *Bulletin of the Mineral Research and Exploration Institute of Turkey* **66**: 23-64.
- LINDHOLM, K. 1991. Hunnebergian graptolites and biostratigraphy in southern Scandinavia. *Lund Publications in Geology* **95**: 1-36.
- LOEBLICH, A. R. & TAPPAN, H. 1976. Some new and revised organic-walled phytoplankton microfossil genera. *Journal of Paleontology* **50**: 301-308.
- MARTIN, F. 1992. Uppermost Cambrian and Lower Ordovician acritarchs and Lower Ordovician chitinozoans from Wilcox Pass, Alberta. *Geological Survey of Canada, Bulletin* **420**: 1-57.
- METTE, W. 1989. Acritarchs from Lower Paleozoic rocks of the western Sierra Morena, SW-Spain and biostratigraphic results. *Geologica et Palaeontologica* **23**: 1-19.
- MOLYNEUX, S.G. 1990. Advances and problems in Ordovician palynology of England and Wales. *Journal of the Geological Society, London* **147**: 615-618.
- MOLYNEUX, S.G. & RUSHTON, A.W.A. 1988. The age of the Watch Hill Grits (Ordovician), English Lake District: structural and palaeogeographical implications. *Transactions of the Royal Society of Edinburgh: Earth Sciences* **79**: 43-69.
- OKAY, A.I. 1986. High-pressure/low-temperature metamorphic rocks of Turkey. *Geological Society of America, Memoir* **164**: 333-347.
- ORBIGNY, A. d'. 1842. Voyage dans l'Amérique méridionale - le Brésil, la république orientale de l'Uruguay, la Patagonie, la république du Chili, la république du Pérou - exécuté pendant les années 1826-33, 3 (Paléontologie). Pitois Levraut, Paris; Levraut, Strasbourg.
- ÖZGÜL, N. & GEDİK, I. 1973. Orta Toroslar'da Alt Paleozoyik yasta Çaltepe Kireçtasi ve Seydişehir Formasyonu'nun stratigrafisi ve konodont faunası hakkında yeni bilgiler. *Bulletin of the Geological Society of Turkey* **16**: 39-52.
- PAALITS, I. & ERDTMANN, B.-D. 1993. The acritarch zonation in Tremadoc-Hunneberg (?Arenig) interval in selected sequences of the East European Platform (EEP). *Rügen-Bornholm. Kristallin, Struktur und Sedimente am Südrand des Baltischen Schildes und dessen Beziehung zu Mitteleuropa. Kurzfassungen*, p. 34.
- RASUL, S. M. 1974. The Lower Palaeozoic acritarchs *Priscogalea* and *Cymatiogalea*. *Palaeontology* **17**: 41-63.
- RASUL, S. M. 1979. Acritarch zonation of the Tremadoc Series of the Shineton Shales, Wrekin, Shropshire. *Palynology* **3**: 53-72.
- RAUSCHER, R. 1974. Recherches micropaléontologiques et stratigraphiques dans l'Ordovicien et le Silurien de la France. *Mémoires de l'Université Louis Pasteur Strasbourg, Sciences géologiques* **38**: 1-224.

SERVAIS, T. 1994. The Ordovician acritarchs from Rügen (NE-Germany): palaeobiogeographical evidence for the attribution to eastern Avalonia. *Neues Jahrbuch für Geologie und Paläontologie, Monatshefte* **1994-9**: 566-580.

SERVAIS, T. & KATZUNG, G. 1993. Acritarch dating of Ordovician sediments of the Island of Rügen (NE-Germany). *Neues Jahrbuch für Geologie und Paläontologie, Monatshefte* **1993-12**: 713-723.

STUBBLEFIELD, C. J. & BULMAN, O. M. B., 1927. The Shineton Shales of the Wrekin District: with notes on their development in other parts of Shropshire and Herefordshire. *Quarterly Journal of the Geological Society of London* **83**: 96-145.

VAVRDOVÁ, M. 1976. Excystment mechanism of Early Paleozoic acritarchs. *Časopis pro Mineralogii a Geologii* **21**: 55-64.

WILLIAMS, H., BARNES, C. R., O'BRIEN, F. H. C. & BOYCE, W. D. 1994. A proposed global stratotype for the second series of the Ordovician System: Cow Head Peninsula, western Newfoundland, *Bulletin of Canadian Petroleum Geology* **42**: 219-231.

William T. DEAN
Department of Earth Sciences
University of Wales
Cardiff CF1 1XL
Wales, U.K.

Typescript submitted: July 1, 1995

Revised typescript received: September 20, 1995.

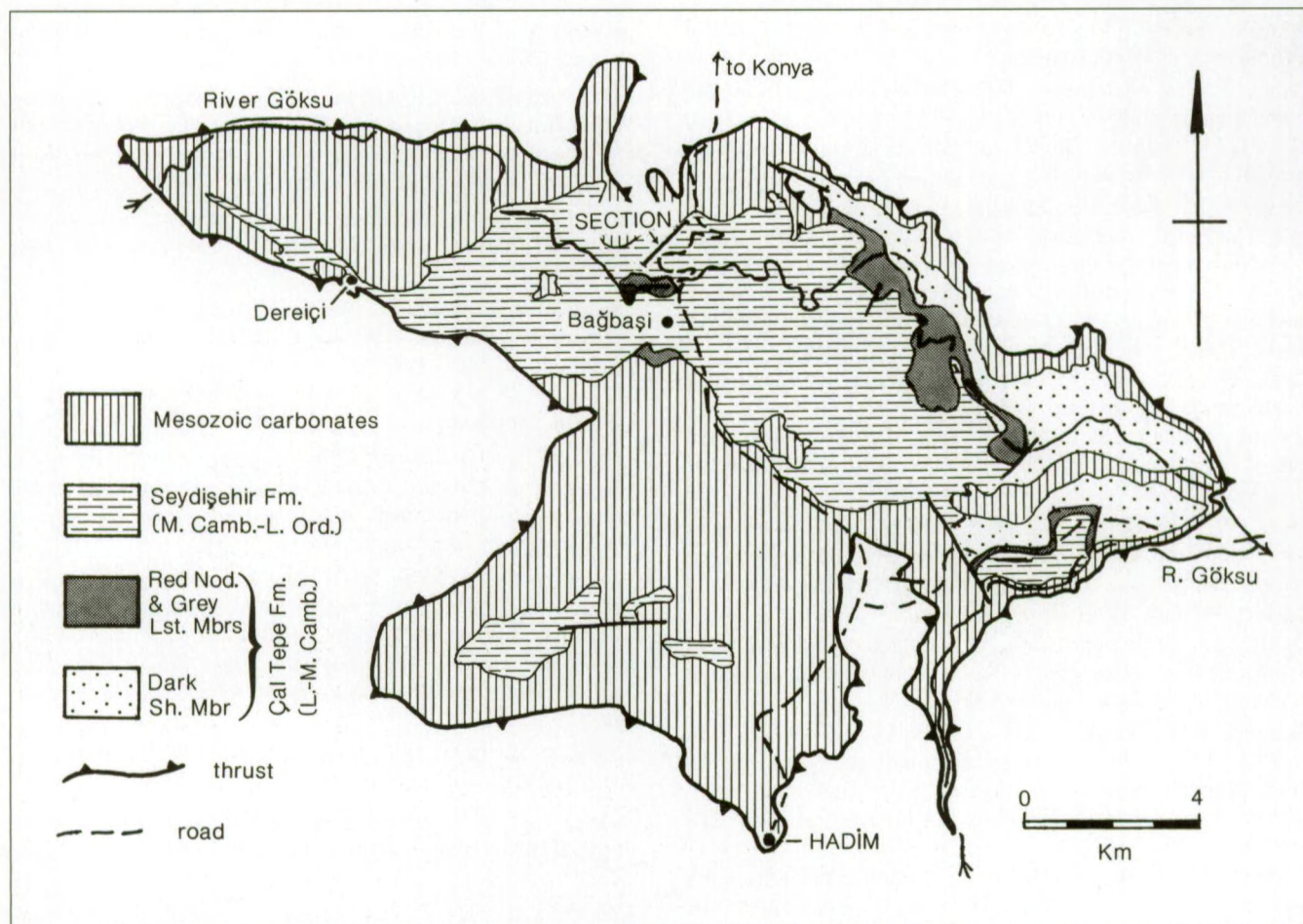
Appendix: location of cited samples and specimens

Shropshire, United Kingdom

Sample SHIN-24 is from the Shineton Shale Formation at locality RR2 of STUBBLEFIELD & BULMAN (1927, p. 112, pl. V) in what was then termed the *Shumardia pusilla* Zone, since renamed *Shumardia (Conophrys) salopiensis* Biozone (FORTEY & OWENS, 1991). The sample comes from the middle of a continuous exposure (National Grid Reference SJ 6075

0370}, 4 m thick, of laminated, grey mudstone in the west bank of Sheinton Brook, about 250 m south of Sheinton Farm, 2.5 km east of Cressage village; the unit probably forms part of STUBBLEFIELD & BULMAN's (1927, p. 112) horizon E.2, 11.3 m thick.

The highest part of the Shineton Shale Formation was named Arenaceous beds (thickness not stated) by STUBBLEFIELD & BULMAN (1927), based on an outcrop in the bed of Coundmoor



Text-fig. 2 — Generalised geological map (after ÖZGÜL in ÖZGÜL & GEDİK, 1973) showing location of cited section in Seydisehir Formation north of Bağbaşı, near Hadim, southern Turkey.

Brook, near Evenwood, 4.5 km southwest of Cressage village and close to the unconformable base of the Caradoc Series. FORTEY & OWENS (1991) formalised the unit as Arenaceous Member and recorded a measured section at least 33 m thick, beginning at “the first substantial (10 cm thick) grit horizon” which marks the base of the member. The grit bed is followed by, first, a 20 m unexposed interval, and second, a 5 m unit of silty mudstone and interbedded sands. Sample SHIN-21 [National Grid Reference SJ 5550 0150] is from the east bank of Coundmoor Brook at a level 4.3 m above the base of the 5 m unit, and its age, like that of SHIN-24, is *Shumardia (Conophrys) salopiensis* Biozone.

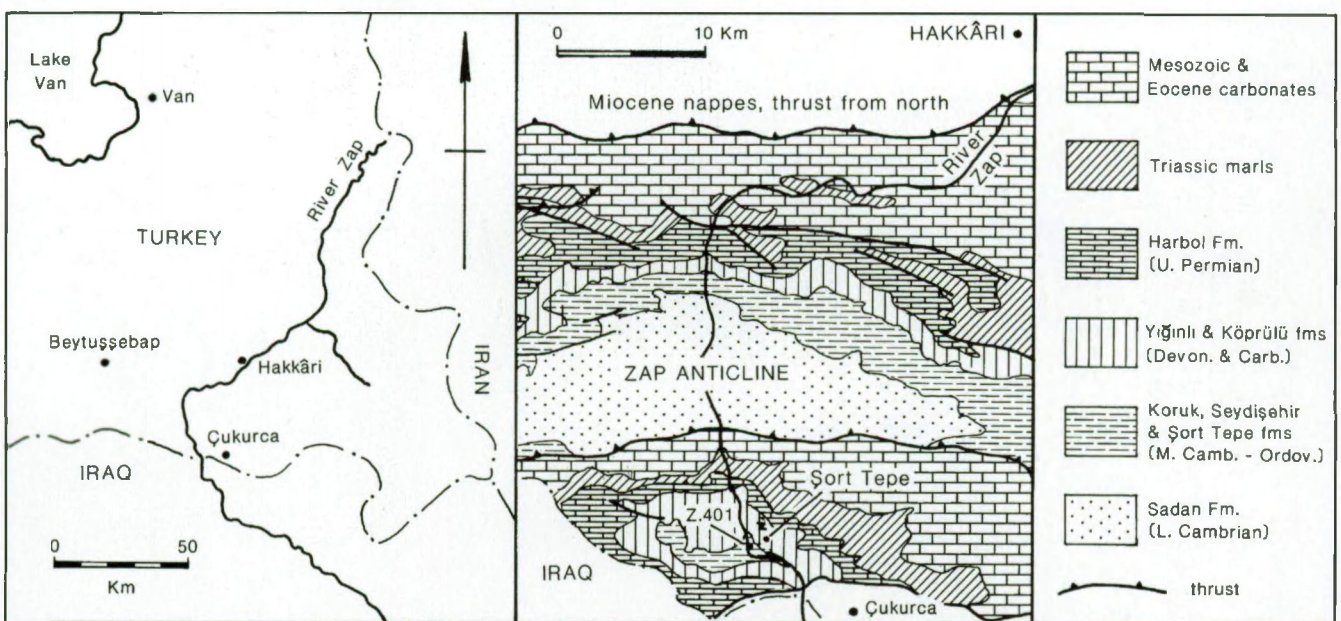
Hadim area, south central Turkey

In the central Taurids, shales and siltstones of the Seydisehir Formation form a large outcrop within a tectonic window at and near the valley of the River Göksu, 70 km south of Konya (ÖZGÜL *in* ÖZGÜL & GEDİK, 1973; ÖZGÜL *in* DEAN & ÖZGÜL, 1981). Near the village of Bağbasi, 11.5 km north of Hadim (Fig. 2), Middle Cambrian carbonates of the Çal Tepe Formation are succeeded by Seydisehir Formation clastics which are Middle Cambrian at the base and become progressively younger northwards, ascending the north side of the Göksu valley. ÖZGÜL (*in* ÖZGÜL & GEDİK, 1973, Fig. 2) divided the Seydisehir Formation into four successive units, 27 m, 82 m, 30 m and 570 m thick, the last of which is overlain by unconformable Mesozoic carbonates. Samples HAD-11 and HAD-13 are from levels 229 m and 276 m above the base of ÖZGÜL’s 570 m unit, and sample HAD-14 is estimated to be 309 m above the base of

the same unit. Corresponding estimated distances above the base of the Seydisehir Formation are 368 m, 415 m and 448 m. Acritarchs from HAD-13 and HAD-14 were noted and figured by MARTIN (*in* DEAN *et al.*, 1993, p. 265, pl. 1, figs. 4-7), and those from HAD-14 were subsequently considered (MARTIN *in* DEAN & MARTIN, 1992, p. 198) to be possibly transitional from “latest Tremadoc - earliest Arenig”.

Zap valley, south of Hakkâri, southeastern Turkey

Clastics of the Seydisehir Formation form part of an inlier, elongated east-west, in and west of the valley of the River Zap, 7.5 km north-west of the town of Çukurca and a few km north of the Turkey - Iraq border (Fig. 3). A SW-NE section (DEAN, MONOD & PERİNÇEK, 1981, p. 276, fig. 6) from the east bank of the Zap towards the adjacent high ground of Sort Tepe exposes about 200 m (estimated) of alternating quartzites and silty shales. The latter lack body fossils but the former contain numerous examples of the trace fossil *Cruziana furcifera* d’ORBIGNY, 1842; the age is probably Arenigian, by analogy with other parts of southern Turkey, and the unit is overlain with marked disconformity by oolitic limestone at the base of the Sort Tepe Formation (Ashgill). The section in Seydisehir Formation extends downhill, past the unmade road, to the river’s eastern edge, where sample Z.401 is from a level 2 m above the lowest beds exposed. The locality was noted by MARTIN (*in* DEAN & MARTIN, 1992, p. 198), who stated that it could be latest Tremadoc or earliest Arenig, depending on whether *Coryphidium elegans* and *C. baraka* CRAMER & DIEZ, 1976 are accepted as indicative of the Arenig.

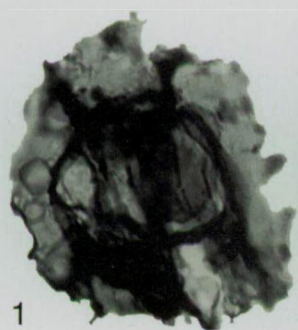


Text-fig. 3 — Generalised geological map (after DEAN, MONOD & PERİNÇEK, 1981) showing location of cited section in Seydisehir Formation at base of east bank of River Zap, 7.5 km north-northwest of Çukurca, southeastern Turkey.

Explanation of Plate I

Sample SHIN-24 is from the Shineton Shale Formation in Sheinton Brook, near Cressage, Shropshire, U.K.; Z-401 is from the Seydisehir Formation, east bank of the River Zap, 7.5 km north-northwest of Çukurca, southeastern Turkey; HAD-11 and HAD-14 are from the Seydisehir Formation near Bağbasi, south central Turkey. Specimens in the Institut royal des Sciences naturelles de Belgique (IRScNB), Brussels.

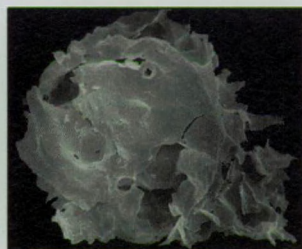
- Fig. 1 — *Cymatiogalea deunffii* JARDINÉ *et al.*, 1974. IRScNB No. b 3088 (x 1000), Z-401.
 Figs. 2, 3, 6 — *Cymatiogalea messaoudii* JARDINÉ *et al.*, 1974, IRScNB No. b 3089 (x 1000), Z-401.
 Figs. 4, 8 — *Peteinosphaeridium* sp. IRScNB No. b 3090, Z-401. 4, x 500; 8, detail, x 1500.
 Fig. 5 — *Stelliferidium* aff. *trifidum* (RASUL) FENSOME *et al.* 1990. IRScNB No. b 3091 (x 1000), HAD-11.
 Fig. 7 — *Stelliferidium trifidum* (RASUL) FENSOME *et al.*, 1990. IRScNB No. b 3092 (x 1000), SHIN-24.
 Figs. 9, 10, 13, 17 — *Acanthodiacrodium?* *dilatatum* MOLYNEUX *in* MOLYNEUX & RUSHTON, 1988. Z-401, 9, IRScNB No. b 3093 (x 1000); 10, IRScNB No. b 3094 (x 1000); 13, detail of Fig. 10 (x 2000); 17, IRScNB No. b 3100 (x 1000).
 Figs. 11, 14, 15, 20 — *Dactylofusa velifera* COCCHIO, 1982, 11, IRScNB No. b 3095 (x 1000), Z-401; 14, IRScNB No. b 3097 (x 1000), Z-401; 15, IRScNB No. b 3098 (x 1000), HAD-14; 20, detail of Fig. 14 (x 2000).
 Figs. 12, 18 — *Coryphidium* sp. IRScNB No. b 3096 (x 1000), HAD-14.
 Fig. 16 — *Coryphidium* cf. *elegans* CRAMER *et al.*, 1974. IRScNB No. b 3099 (x 1000), Z-401.
 Figs. 19, 21 — *Vavrdovella areniga* aff. subsp. *cumbriensis* (MOLYNEUX *in* MOLYNEUX & RUSHTON, 1988) COOPER *et al.* 1995. 19, IRScNB No. b 3101 (x 750), SHIN-24; 21, IRScNB No. b 3102 (x 1000), Z-401.
 Fig. 22 — *Coenobial acritarch sensu* DI MILIA, 1991. IRScNB No. b 3103 (1000), Z-401.



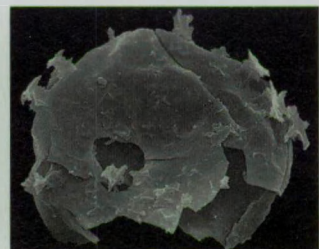
1



2



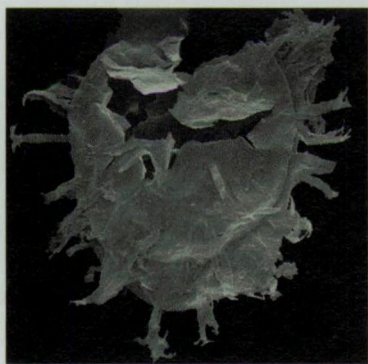
3



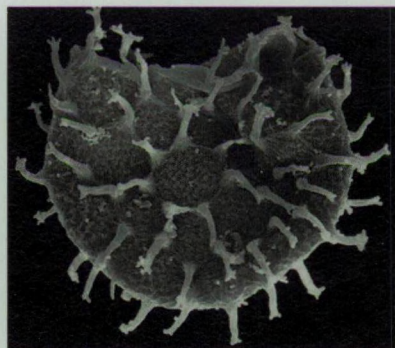
4



5



6



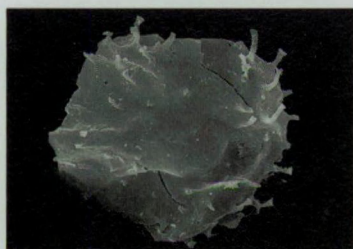
7



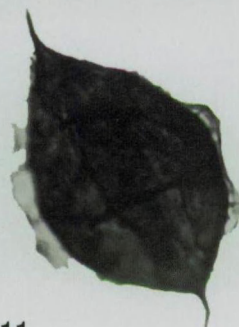
8



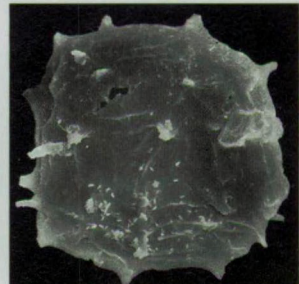
9



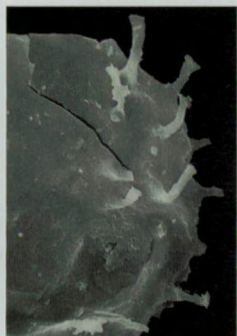
10



11



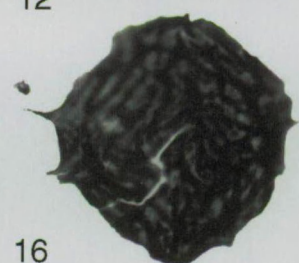
12



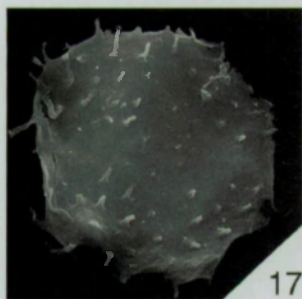
13



14



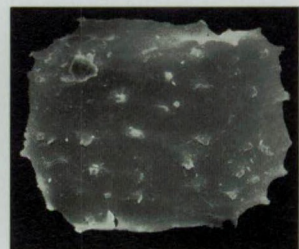
16



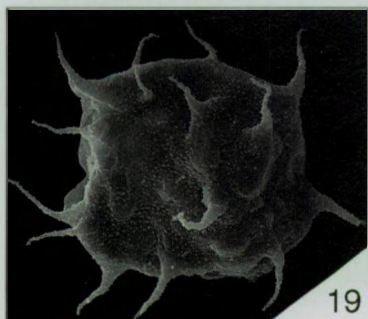
17



15



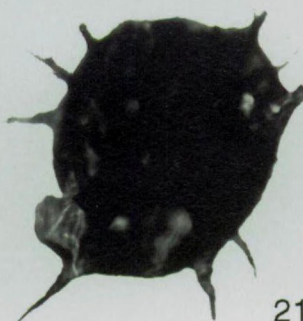
18



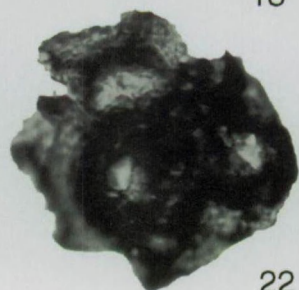
19



20



21



22

