

RESEARCH
REVIEW



Pushing the limits in marine species distribution modelling: lessons from the land present challenges and opportunities

L. M. Robinson^{1,2*}, J. Elith³, A. J. Hobday², R. G. Pearson⁴, B. E. Kendall^{1,5}, H. P. Possingham¹ and A. J. Richardson^{1,6,7}

¹The Ecology Centre, The University of Queensland, Qld 4072, Australia, ²Climate Adaptation Flagship, CSIRO Marine and Atmospheric Research, Hobart, Tas 7000, Australia, ³School of Botany, The University of Melbourne, Vic 3010, Australia, ⁴Center for Biodiversity and Conservation and Department of Herpetology, The American Museum of Natural History, New York, NY 10024, USA, ⁵Bren School of Environmental Science & Management, University of California, Santa Barbara, California, CA 93106-5131, USA, ⁶Climate Adaptation Flagship, CSIRO Marine and Atmospheric Research, Cleveland, Qld 4163, Australia, ⁷Centre for Applications in Natural Resource Mathematics, School of Mathematics and Physics, The University of Queensland, Qld 4072, Australia

*Correspondence: L. M. Robinson, The Ecology Centre, The University of Queensland, Queensland 4072, Australia.
E-mail: lucy.m.e.robinson@gmail.com
Reuse of this article is permitted in accordance with the Terms and Conditions set out at http://wileyonlinelibrary.com/onlineopen#OnlineOpen_Terms

ABSTRACT

Aim Species distribution models (SDMs) have been used to address a wide range of theoretical and applied questions in the terrestrial realm, but marine-based applications remain relatively scarce. In this review, we consider how conceptual and practical issues associated with terrestrial SDMs apply to a range of marine organisms and highlight the challenges relevant to improving marine SDMs.

Location We include studies from both marine and terrestrial systems that encompass many geographic locations around the globe.

Methods We first performed a literature search and analysis of marine and terrestrial SDMs in ISI Web of Science to assess trends and applications. Using knowledge from terrestrial applications, we critically evaluate the application of SDMs in marine systems in the context of ecological factors (dispersal, species interactions, aggregation and ontogenetic shifts) and practical considerations (data quality, alternative modelling approaches and model validation) that facilitate or create difficulties for model application.

Results The relative importance of ecological factors to be considered when applying SDMs varies among terrestrial and marine organisms. Correctly incorporating dispersal is frequently considered an important issue for terrestrial models, but because there is greater potential for dispersal in the ocean, it is often less of a concern in marine SDMs. By contrast, ontogenetic shifts and feeding have received little attention in terrestrial SDM applications, but these factors are important to many marine SDMs. Opportunities also exist for applying more advanced SDM approaches in the marine realm, including mechanistic ecophysiological models, where water balance and heat transfer equations are simpler for some marine organisms relative to their terrestrial counterparts.

Main conclusions SDMs have generally been under-utilized in the marine realm relative to terrestrial applications. Correlative SDM methods should be tested on a range of marine organisms, and we suggest further development of methods that address ontogenetic shifts and feeding interactions. We anticipate developments in, and cross-fertilization between, coupled correlative and process-based SDMs, mechanistic eco-physiological SDMs, and spatial population dynamic models for climate change and species invasion applications in particular. Comparisons of the outputs of different model types will provide insight that is useful for improved spatial management of marine species.

Keywords

Aggregation, bioclimatic envelope model, competition, dispersal, ecological niche modelling, feeding, marine/terrestrial systems, ontogenetic shifts, prey, species distribution model.

INTRODUCTION

Spatial patterns in species distributions have inspired ecological research for over a century (Grinnell, 1904; Gause, 1934; Hutchinson, 1957). Understanding the processes that create these patterns has become increasingly important in the face of continuing threats of habitat destruction, pollution, species invasion and climate change (Millennium Ecosystem Assessment, 2005). One approach providing practical information on the spatial distribution of species is the species distribution model (SDM). A wide variety of SDM methods have now been developed, including correlative (Guisan & Zimmermann, 2000; Pearson & Dawson, 2003), coupled correlative and process-based models (i.e. 'hybrid'; Smolik *et al.*, 2010) and mechanistic approaches (Kearney & Porter, 2009). Each approach has advantages and disadvantages (Kearney & Porter, 2009), but the vast majority of studies to date have been correlative. This approach correlates species occurrence (presence-only or presence-absence) records with environmental data in geographic space to explain and predict a species' distribution. Such models were first applied in the terrestrial domain where their use has increased rapidly over the past 20 years (Fig. 1). By comparison, application of SDMs to marine species is rare (Fig. 1), although interest in their application is increasing (Redfern *et al.*, 2006; Valavanis *et al.*, 2008).

In transferring correlative SDMs from the land to the sea, the validity of model assumptions and predictive performance will be affected by the unique physical properties of marine habitats and the biological characteristics of marine organisms. Terrestrial applications of correlative SDMs typically assume that the physical environment (notably climate) exerts a dominant control over the natural distribution of a species (Grinnell, 1904; Hutchinson, 1957; Pearson & Dawson, 2003). Other ecological factors including dispersal, species interactions, and shifts in

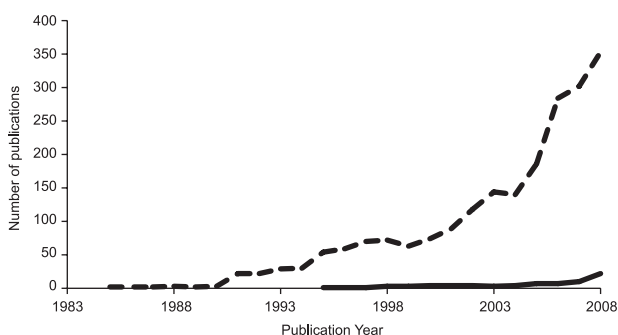


Figure 1 Trends in the number of marine (solid line) and terrestrial (dashed line) applications. Data derived from a search in ISI Web of Science using search topic = 'species distribution' OR 'ecological niche' OR 'habitat preference' OR 'environmental preference' OR 'bioclimate envelope' OR 'bioclimate' OR 'environmental niche' OR 'habitat suitability' AND 'model*'. A subsearch was performed using search topic = 'marine' and this was subtracted from the remaining publications for each time period based upon the assumption that they would be terrestrial, although some freshwater examples may be included.

environmental requirements throughout life-history stages (i.e. ontogenetic shifts), which can be important in defining the distribution of a species, are generally not included in these models (Guisan *et al.*, 2006; Araújo & Luoto, 2007; Schurr *et al.*, 2007). Failure to explicitly include these factors can affect the ecological realism and predictive performance of SDMs (Guisan & Zimmermann, 2000; Austin, 2002; Pearson & Dawson, 2003). However, the importance of such factors in modelling the distribution of marine species has yet to be explored and may differ from terrestrial SDM applications.

In this review we discuss the influence of key conceptual and practical issues associated with species distribution modelling in the marine realm. We begin by analysing the literature on marine SDMs. Then we explore the importance of four ecological factors – dispersal, species interactions, ontogenetic shifts and aggregations of individuals – in modelling the distribution of marine species in comparison with terrestrial species. While evaluating the relative importance of these ecological factors for different groups of marine organisms, we discuss how solutions developed in terrestrial SDM applications apply in a marine context and suggest some alternative approaches. Subsequently, we compare and contrast the practical issues of data quality, model selection and model validation in marine and terrestrial SDMs. We conclude with recommendations for applying SDMs in marine systems and highlight future research needs.

MARINE SPECIES DISTRIBUTION MODEL APPLICATIONS

SDMs are used in terrestrial and marine systems for a variety of purposes, including conservation planning, climate change adaptation, biosecurity (species invasion and disease), testing principles of theoretical ecology and understanding processes that drive biogeographic patterns (Elith & Burgman, 2002; Thomas *et al.*, 2004; Pearson *et al.*, 2007; Le Maitre *et al.*, 2008; Kharouba *et al.*, 2009). A literature search of correlative SDMs in marine systems revealed that the majority of models have been applied in conservation planning (Fig. 2a). SDMs have been used in planning marine protected areas and designating essential fish habitats (Leathwick *et al.*, 2008; Valavanis *et al.*, 2008; Maxwell *et al.*, 2009). Likewise, mapped predictions of species distributions hold significant appeal for conservation planning in terrestrial systems (Elith & Leathwick, 2009a). Relatively few studies in marine systems have used SDMs to predict future impacts of climate change and species invasion (Fig. 2a), even though these are considerable threats to many marine organisms (Lee *et al.*, 2008; Richardson & Poloczanska, 2008). This might be a matter of timing, or it may reflect concerns, expressed in the terrestrial SDM literature that correlative SDMs may not be appropriate for applications concerning climate change and species invasion (Pearson & Dawson, 2003; Skelly *et al.*, 2007; Pearman *et al.*, 2008; Kearney & Porter, 2009; Elith & Leathwick, 2009b).

The number of published SDMs varies among different groups of marine organisms, but fish are the most common taxonomic group to be modelled (Fig. 2b). This probably

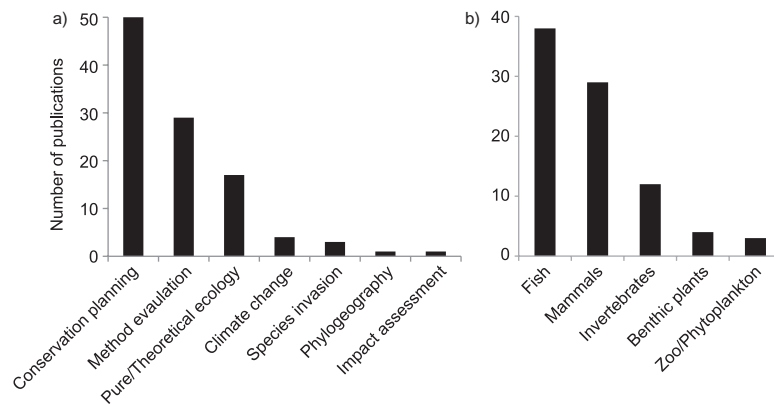


Figure 2 Summary of marine species distribution model (SDM) application by (a) primary research objective and (b) taxonomic group. Based on the literature search presented in Fig. 1, marine papers were sorted into research objectives and taxonomic groups. Those papers that included community analyses were disregarded and only papers that applied SDMs to single species were included. It should be noted that not all research objectives were mutually exclusive. For example, a future SDM projection under various climate change scenarios may feed into a conservation planning application, but in these cases the paper was assigned to an application based on the primary objective of the study.

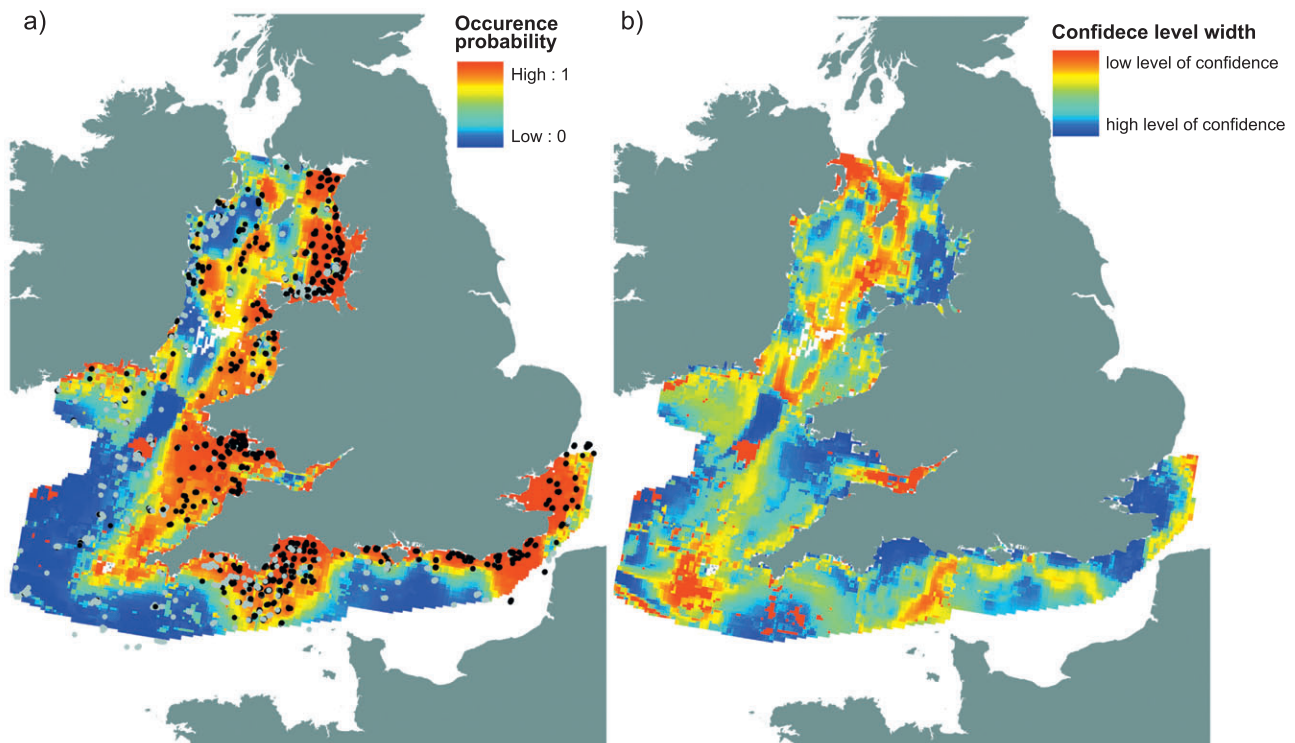


Figure 3 A marine species distribution model application for the conservation of common sole (*Solea solea*) in UK waters. (a) The modelled distribution in colour as a predicted probability of occurrence with black presence and grey absence records overlaid. (b) The width of the 90% confidence interval for the fitted model in (a) indicating regions of lower (red) or higher (blue) confidence (taken from Maxwell *et al.*, 2009).

reflects both their commercial value and data availability. For example, Maxwell *et al.* (2009) predicted the distributions of several commercially harvested fish species for use in conservation planning (e.g. Figure 3a). The modelled distributions were complemented with mapped confidence intervals, providing managers with important information on spatial variation in the accuracy of the models (Fig. 3b).

SDMs of marine mammals are also relatively common (Fig. 2b). This is motivated in part by population declines that have been linked to habitat degradation and fisheries by-catch mortalities (Redfern *et al.*, 2006; Panigada *et al.*, 2008). Occurrence data are generally limited for marine mammals, because many species are difficult to survey and detect (Redfern *et al.*, 2006). Even so, SDMs of marine mammals have informed

habitat conservation (Bailey & Thompson, 2009; Embling *et al.*, 2010), provided understanding of fisheries interactions (Torres *et al.*, 2003; Kaschner *et al.*, 2006) and helped exploration of the impacts of climate change (Freitas *et al.*, 2008).

Few SDM applications have focused on marine invertebrates and macroalgae, yet these groups have several attributes that make them well suited to species distribution modelling. Benthic marine invertebrates and macroalgae are easily surveyed, and in some cases many data are available, including historical time series that could be used in model validation exercises (Connell, 1961; Lima *et al.*, 2007). Further, many species within these groups are invasive pests that profoundly affect marine ecosystems, and modelling their current and future distributions should be a priority (Lee *et al.*, 2008; Walther *et al.*, 2009). Here we evaluate the differences and similarities in the ecology of different groups of marine organisms and how this should influence the way in which existing SDMs are applied or new models are developed.

THE INFLUENCE OF ECOLOGICAL FACTORS ON SPECIES DISTRIBUTION MODELS – A CROSS-SYSTEMS COMPARISON

A number of ecological factors, in addition to climate, can influence a species' distribution. Terrestrial SDMs have been extended to include ecological factors such as dispersal (e.g. Broennimann *et al.*, 2006; Schurr *et al.*, 2007; Smolik *et al.*, 2010) and competition (e.g. Leathwick & Austin, 2001). Other factors such as feeding interactions, ontogenetic shifts and aggregation have received less attention in terrestrial SDMs. All of these could be important when applying SDMs to particular groups of marine organisms, but there has been little work that explores how these factors will affect model robustness and performance in the sea. In the following sections we discuss in detail the importance of each of these factors to marine SDMs, relative to terrestrial implementations.

Dispersal

Correlative SDMs are usually based on species–environment relationships that do not directly consider constraints or facilitation of dispersal in the neighbouring spatial context (Guisan *et al.*, 2006). In terrestrial SDMs, authors conventionally assume two dispersal scenarios; either that species cannot disperse at all or that they can disperse everywhere. The dispersal scenario assumed is also dependent on the application. For example, Thomas *et al.* (2004) explored both dispersal scenarios when predicting species future distributions under climate change, but when predictions of species current distributions are required it is often assumed that that species have dispersed to all environmentally suitable sites (Araújo & Pearson, 2005). However, as a result of dispersal limitation climatically suitable sites are not always occupied (Svenning *et al.*, 2006; Schurr *et al.*, 2007). The influence of dispersal on species distributions and SDM predictions varies among terrestrial organisms (Araújo & Pearson, 2005) and the same is likely to be true for marine organisms.

Dispersal is the movement of propagules away from an existing population or natal site. The potential for dispersal is limited by the structure of the seascape or landscape and the method by which an organism disperses. Physical barriers to dispersal in the terrestrial environment include mountain ranges, lakes, rivers, oceans, urban centres and agricultural land. The marine environment has fewer absolute physical barriers to dispersal than the terrestrial environment (Steele, 1991). Physical barriers in the sea include continental and island land masses, ocean frontal systems and currents, vertical stratification of the water column (Longhurst, 2007), changes in substrate and bathymetry (Gaines *et al.*, 2007) and heavily fished and/or polluted regions. Such barriers are generally weaker than those on land, subtly retarding movement in one direction or another rather than preventing it altogether (Gaines *et al.*, 2007). With fewer, more permeable, barriers in marine systems than on land, there is greater potential for long-distance dispersal of organisms across habitat discontinuities (Carr *et al.*, 2003). As a result, correlative SDMs may be expected to predict current and potential future distributions of marine species better than those of terrestrial organisms.

Dispersal methods vary among marine and terrestrial systems and different groups of organisms (Carr *et al.*, 2003; Kinlan & Gaines, 2003) and ultimately influence whether environmentally suitable and unsuitable sites are occupied (Pulliam, 2000). Almost all marine plants and animals shed their reproductive propagules directly into the ocean, providing a potential for wide dispersal by currents (Kinlan & Gaines, 2003), whereas terrestrial animals predominantly depend on their own locomotion and many plants rely upon animal vectors (such as insects, bats and birds) for dispersal. These dispersal processes limit the rate at which terrestrial organisms can disperse, although wind dispersal of small-seeded plants, analogous to dispersal by currents in the ocean, can be an important predictor of plant distributions (Nathan *et al.*, 2002; Muñoz *et al.*, 2004). Rates of range expansion in macroalgae far exceed those of terrestrial plants and the distances that phytophagous insects disperse are also generally lower on average than herbivorous marine invertebrate and fish species (Kinlan & Gaines, 2003). Hence, it is evident that many marine organisms generally disperse farther and/or faster than terrestrial organisms. However, there are also considerable differences in dispersal capabilities among marine organisms (Wieters *et al.*, 2008). At one end of the spectrum, many macroalgae and some invertebrates and benthic fish species develop within metres of their parents. At the other end of the spectrum, most marine invertebrates and almost all pelagic fish produce young that develop in the plankton for weeks to months and can therefore be dispersed hundreds of kilometres by ocean currents. Consequently, the dispersal distance of many marine fish and most invertebrates is one to five orders of magnitude greater than that of macroalgae (Kinlan & Gaines, 2003).

Where dispersal is an important determinant of the distribution of a species, accounting for it will result in more robust models. Methods used to account for dispersal in correlative SDMs have varied according to the application. Post-processing

of predictions or explicitly modelling the dispersal process has been performed for climate change (Broennimann *et al.*, 2006; Keith *et al.*, 2008) and species invasion applications (Williams *et al.*, 2008). Post-processing of SDM can involve setting the probability of occurrence to zero in sites that a species could not reach via dispersal over a particular time period (Broennimann *et al.*, 2006). Alternatively, correlative SDMs have been coupled with a spatial population model (Keith *et al.*, 2008). Given there are fewer barriers in the marine environment and dispersal potential is greater for many species, especially invertebrates and fish, specialized methods for dealing with dispersal in correlative models may be unnecessary. However, it may be useful for those marine species with a low dispersal potential (such as macroalgae and invertebrates that produce benthic larvae) or when highly dispersive species are subject to strong directional effects of marine currents that could influence future distribution patterns (Mullon *et al.*, 2002). For current distribution predictions, dispersal has also been accounted for through statistical models that include spatial structure, which is not described by climatic factors, and this will be discussed further in the section below on aggregation (Dormann *et al.*, 2007). To investigate the importance of dispersal in modelling the distributions of marine species it would be informative to apply alternative approaches for incorporating dispersal to a variety of marine species that vary in their dispersal potential.

Species interactions

Most correlative SDMs do not explicitly include species interactions (Guisan *et al.*, 2006), though the effects of interactions may be implicit in the model. Excluding the direct effects of biotic interactions on species distributions can lead to inaccuracies in SDM predictions and projections (Austin, 2002). There are many different types of inter-specific interactions that could influence the distribution of species, including competition, facilitation, mutualism, parasitism, herbivory, predation, symbiosis and disease. While many of these interactions are likely to influence the performance of SDMs, competition is commonly noted as an issue for terrestrial SDMs (Guisan & Thuiller, 2005; Araújo & Luoto, 2007; Heikkinen *et al.*, 2007). For marine SDMs, trophic interactions such as feeding have received more attention (Redfern *et al.*, 2006; Torres *et al.*, 2008). Here we focus our discussion on competition and feeding.

Competition

Inter-specific competition can have strong structuring effects on a species' distribution (Amarasekare, 2008), especially when space and resources are limiting (Lotka, 1925; Volterra, 1926). This can result in a species not inhabiting the full range of suitable environmental conditions and a SDM fitted to the distribution data that underestimates the potential distribution (Leathwick & Austin, 2001; Araújo & Luoto, 2007). A few studies have demonstrated the importance of competitive exclusion on the distribution of terrestrial plants (Leathwick & Austin, 2001; Anderson *et al.*, 2002) and animals (Russell & Clout, 2004;

Ritchie *et al.*, 2009). Such studies are rare because it is difficult to find datasets where the effect of competition is not confounded with that of the environment (Elith & Leathwick, 2009b). The study by Leathwick & Austin (2001) is a notable exception, because a unique dataset was available that allowed these effects to be isolated, enabling quantification of the impact of a dominant competitor (*Nothofagus*) on the abundance and the distribution of 12 widespread conifer and broad-leaved tree species (Leathwick & Austin, 2001).

There are very few published examples of competitive exclusion in pelagic habitats (Bilio & Niermann, 2004). Hence we have a limited understanding of how competition can affect the distributions of pelagic species and are thus limited with regard to using a correlative SDM approach. Competitive interactions are likely to be easier to include in models of benthic distributions. For barnacle species, competition is a key range-limiting process (Poloczanska *et al.*, 2008). In investigating the effects of competition and temperature on the abundance of two competing barnacle species, path analysis revealed that the influence of temperature in June was only significant for the dominant competitor, but this indirectly affected the abundance and distribution of the inferior competitor. Due to the rich datasets available for benthic invertebrates, it may be feasible to explore the influence of competition, relative to environmental variables, on the distribution of other species, using path analysis and/or correlative SDMs. For those species currently affected by competitive interactions, predicting future distributions (e.g. under climate change) is even more challenging than predicting their current distributions, because interactions may change with changing environmental conditions (Pearman *et al.*, 2008).

Feeding

The influence of prey on the distribution of consumers relative to the effect of the environment is rarely examined, but there are a few more examples in marine (Logerwell & Hargreaves, 1996; Redfern *et al.*, 2006; Torres *et al.*, 2008) than terrestrial systems (Fernandez *et al.*, 2003; Guisan & Thuiller, 2005). According to foraging theory, prey is important in defining suitable habitat for consumers and predators (Boyce & McDonald, 1999), but its influence on SDM predictions is only critical when the environmental preference of the consumer is considerably different from that of its prey. For instance, the distribution of breeding territories of the carnivorous Iberian lynx was modelled using a suite of fine-scale environmental and geographic variables, and the best predictor variable was the density of ecotones between two vegetation classifications (Fernandez *et al.*, 2003). This environmental variable, along with tall shrubs, were also highly correlated with the lynx's prey. It was inferred from this that the high relative importance of the environmental predictors was due to their strong correlation with the prey species. In this example, including the distribution of prey may not have improved the accuracy of territory predictions because the environmental predictor variable and the prey were highly correlated.

In marine systems, many apex predators (such as marine mammals, tuna and some sharks) can maintain body temperatures above the surrounding environmental conditions and are thus less constrained by physical conditions than most of their prey. The distribution and density of prey may therefore be an important factor in determining the distribution of such species (Redfern *et al.*, 2006; Wirsing *et al.*, 2007; Torres *et al.*, 2008), although data are sometimes lacking at the appropriate scale (Torres *et al.*, 2008). By contrast, benthic invertebrates cannot thermoregulate and many species are opportunistic generalist feeders that consume a wide variety of prey suspended in the water column. Consequently, distributions of benthic invertebrates are restricted more by ambient environmental conditions than by specific dietary requirements, so including prey would not improve predictions. For example, the distribution of a vase tunicate species, which is a benthic opportunistic filter feeder, was accurately predicted by an SDM that included only environmental covariates (Therriault & Herborg, 2008). However, given that this species filter feeds on small suspended particles and chlorophyll *a* was included as an 'environmental' covariate, this may have functioned as an index of prey. Further tests of the influence of plankton distributions on SDMs of benthic filter feeders are required.

Path analysis has been used to explore the importance of prey relative to environmental factors (e.g. ocean fronts) on the distribution of pelagic seabirds at a small spatial scale (Logerwell & Hargreaves, 1996). Both seabird species were directly affected by prey (fish density) when all survey years were combined, but prey was only significant for some survey years in isolation. Path analysis could be a useful tool that may reveal whether models of prey or competitor distribution are required to build better SDMs at the spatial and/or temporal scale of interest. However, the inclusion of prey in SDMs is feasible for relatively few applications because the information is rarely available. In the ocean, information on the distribution of mid-trophic level species, such as squid, is currently lacking, but gathering information on this group has been highlighted as a major priority for improving our understanding of the ecology of top-level predators (Lehodey & Maury, 2010). The importance of including prey distributions in marine SDMs needs to be explored further, and this will be feasible as more data become available.

Ontogenetic shifts

SDMs are generally based on adult occurrence records. It is therefore assumed that the environmental preference and other indirect effects of the habitat association of species will be adequately described using information from the adult stage alone. This assumption may be invalid for organisms that have complex life histories and inhabit different environments during different life stages. Changes in environmental preferences between life-history stages is evident in some terrestrial organisms (e.g. trees whose seeds are wind dispersed or insects that lay eggs in host plants or animals) and is even more prevalent in marine organisms (Carr *et al.*, 2003). A limited number of terrestrial SDM applications have examined the importance of

incorporating different life-history stages (Webb & Peart, 2000; Jones *et al.*, 2007; Ficetola *et al.*, 2009). For instance, Jones *et al.* (2007) showed that environmental predictors better explained the distribution of tree fern species for younger than older life-history stages. By contrast, environmental predictors selected by Webb & Peart (2000) resulted in better model fits for distributions of adults than seedlings. Additionally, both studies demonstrated changes in the importance of key environmental variables throughout life (Webb & Peart, 2000; Jones *et al.*, 2007).

Ontogenetic shifts in habitat use and environmental tolerance/preference are common in mobile marine species (Dahlgren & Eggleston, 2000; Wilson *et al.*, 2008) and have also been noted in benthic sessile species (Hiddink, 2003; Manzur *et al.*, 2010). The degree of habitat specialization can either increase or decrease with ontogeny (Beck, 1995; Halpern *et al.*, 2005). Many pelagic fish species spawn for a limited time each year in areas that are much smaller than their typical distribution (Mullon *et al.*, 2002). For example in anchovy, temperature and offshore hydrodynamic movement are considered to be critical during spawning, but hydrodynamic conditions that support movement towards nursery grounds are most important during recruitment (Mullon *et al.*, 2002). Likewise, many coral reef-associated fish and invertebrates use off-reef habitats (e.g. seagrass, mangroves and macroalgae) as nursery areas before moving onto reef habitats as adults (Dahlgren & Eggleston, 2000). Such shifts can be related to changes in tolerance to abiotic stressors, but are also related to risk of mortality and prey availability. In less mobile benthic organisms, ontogenetic shifts from the juvenile to adult stages can involve movement from mid to high inter-tidal locations towards lower tidal levels (Hiddink, 2003; Manzur *et al.*, 2010). In the case of a predatory benthic sea star, this shift is primarily related to wave exposure and prey (Manzur *et al.*, 2010). In bivalves, the movement to lower tidal habitat at maturity is related more to biotic than abiotic factors, as the risk of predation and avoidance of parasitic infection are the major factors affecting habitat occupancy (Hiddink, 2003).

The greater the environmental difference and geographic distance between habitats at different life-history stages, the more critical it is to model those separate stages, especially if the purpose is for conservation planning. It is likely that information on the environmental requirements of species at different life-history stages is required to improve marine SDMs. If such data are available, models may be fitted on one life-history stage and tested on another to assess whether different models are required for different stages.

Aggregation

Aggregation, in the context of species distribution modelling, refers to how a species is spatially arranged within environmentally suitable conditions (Montoya *et al.*, 2009). In many correlative models it is assumed that spatial structure will be described by environmental covariates included in the model and that the species–environment relationships are linear and stationary, i.e.

they do not change over space (Austin, 2002; Fortin *et al.*, 2005). When organisms aggregate through biological processes that are not described by the environmental covariates, such as acquisition of food, predator and/or competitor avoidance, mating behaviour, limited dispersal and advection (Ritz, 1994), this can lead to issues such as spatial autocorrelation and over-dispersion (Dormann *et al.*, 2007).

The presence of aggregation in species occurrence data is linked to the spatial and temporal scale of sampling and the processes that influence distribution (Hui, 2009; Hui *et al.*, 2010). For example, the intensity of aggregation patterns in 23 plant species distributions was only partly explained by SDMs at a relatively fine spatial scale (Montoya *et al.*, 2009). This was attributed to population processes, species interactions and/or the lack of fine-scale environmental data (Montoya *et al.*, 2009). In pelagic species, larger-scale currents influence aggregation through their effect on spawning, migration and feeding. At the mesoscale (c. 10–100 km), eddies entrain and attract schools of pelagic marine organisms (Moser & Smith, 1993; Ritz, 1994; Logerwell & Smith, 2001; Redfern *et al.*, 2006). It has been argued that SDMs that only include climatic data are potentially more robust at a coarse than at a fine spatial scale because environmental variables are more important than population process or species interactions at the broader scale (Pearson & Dawson, 2003; Montoya *et al.*, 2009). Coarse-scale SDMs will be more suitable for widely distributed species in environments without fine-scale variation, such as some pelagic species, than coastal and benthic species that respond to fine-scale variation in habitat.

The intensity of aggregation, and its stability through time, is partly determined by longevity and mobility (Levin, 1994). Patterns of aggregation may be more stable through time in long-lived sessile organisms than mobile organisms or sessile organisms with a high rate of population turnover. For example, inter-tidal macroalgae may be highly aggregated when conditions only permit local dispersal, but more uniformly distributed when conditions promote wider dispersal (Bellgrove *et al.*, 2004). Mobile species in the sea such as cetaceans, seabirds and pelagic fish may be aggregated over short time-scales, but more uniformly distributed in relation to environmental gradients over longer time-scales. For example, the intensity of aggregation was low in pelagic seabird data that had been collated and pooled over 26 years (Huettmann & Diamond, 2006). This was an unexpected result, as the distributions of many pelagic seabirds were thought to be highly aggregated, but this may have been due to the use of long-term averages. The disadvantage of using longer-term averages and/or coarser spatial resolution is that the spatial structure at the finer scale could represent conditions important for particular seasonal and/or annual events such as spawning. Hence models need to include information that describes important aggregations.

There are a number of measures that can be used to assess spatial autocorrelation and other statistical issues that are often related to aggregation (Legendre & Legendre, 1998; Hui *et al.*, 2010). Measures of spatial autocorrelation are valuable, as they provide information on the spatial structure that is not

described by the model (Dormann *et al.*, 2007). If species are highly aggregated and standard correlative SDMs do not provide adequate predictions, then regression-based methods that account for spatial structure can be used (see Dormann *et al.*, 2007; Hui *et al.*, 2010).

In our discussion of aggregation and other ecological factors, we have evaluated where correlative SDMs may be appropriate for different marine groups. Practical considerations, such as data quality and applying alternative modelling approaches, will also influence SDM application or constructions. These are discussed further in the following section.

PRACTICAL MODELLING CONSIDERATIONS

The types of data, selection of modelling approaches and model evaluation in SDM applications have been widely discussed for terrestrial systems (e.g. Elith *et al.*, 2006; Jiménez-Valverde *et al.*, 2008; VanDerWal *et al.*, 2009), but there has been little discussion of these practical modelling considerations in marine systems. In this section, we identify some general principles from terrestrial applications that are likely to be transferable to the marine realm and highlight challenges in the marine realm that require special emphasis and new model formulations.

Data quality

Common issues associated with data quality exist for both terrestrial and marine applications of SDMs (Elith *et al.*, 2006; Ready *et al.*, 2009). Many terrestrial SDMs rely on occurrence records from museums or herbaria and similar data (though fewer in number) are freely available for a variety of marine taxa (Hendriks *et al.*, 2006). For instance, FishBase (<http://www.fishbase.org/search.php>) provides data on the biology, ecology and estimated range of every marine fish species (c. 31,000). The online database Ocean Biogeographic Information System (OBIS: <http://www.iobis.org/>) has occurrence data for 108,000 marine species. However, data on terrestrial species far exceed those for marine species (Hendriks *et al.*, 2006).

Interpretations from both terrestrial and marine data are hampered by spatial and taxonomic biases towards certain habitats and taxa. In terrestrial systems, global sampling has been limited in tropical and arid environments (Newbold, 2010). Likewise, few data are available for marine species occupying remote habitats, such as the deep ocean (Hendriks *et al.*, 2006). For individual species, spatial bias in occurrence data commonly arises from sampling sites that are more accessible (Phillips *et al.*, 2009). On land, species occurrence records are more prevalent closer to roads, rivers, towns and cities (Phillips *et al.*, 2009). In marine systems, sampling effort is often biased towards sites closer to the coast and in shallower water. For example, fisheries data are especially biased by factors such as the distance from a port and the lack of absence data (Murphy & Jenkins, 2010). The issue of bias is particularly challenging for SDMs that use presence-only or presence-background data, prompting the development of various correction methods (Phillips *et al.*, 2009). Bias correction has been widely applied

when modelling the distribution of a number of terrestrial species (Johnson & Gillingham, 2008; Phillips, 2008; Yates *et al.*, 2010) and it would be appropriate to test these correction methods on marine species data with spatial bias.

Global environmental data for some predictor variables are easily accessible for terrestrial climates via the online data repository WorldClim (<http://www.worldclim.org/>). Marine equivalents have yet to be established, but important initiatives are currently in progress (J. McPherson, Centre for Conservation Research, Calgary Zoological Society, Calgary, pers. comm.). Environmental data used in marine SDMs are usually a combination of observations and modelled values at the surface (e.g. temperature and salinity), in the water column (e.g. mixed layer depth) and sea floor measurements (e.g. depth and distance to bathymetric features). Much of these data are available online (see Valavanis *et al.*, 2008, for a table of sources). Observational data may be measured *in situ* (e.g. cruises and Argo floats) or remotely sensed by satellites. Environmental conditions can also be inferred from ocean circulation models, but these have relatively coarse resolution and are often inadequate on finer time and space scales (Redfern *et al.*, 2006).

The temporal and spatial resolution and accuracy of environmental data often differs among variables, an issue common to both marine and terrestrial SDMs. For marine environmental data, observations of sea surface temperature are relatively consistent, accurate, well spatially resolved and with a long global time series. By contrast, dissolved oxygen observations are patchy in their spatial distribution and cannot be measured from satellite imagery. Hence dissolved oxygen data are more likely to be acquired from an ocean model than observations. The resolution and accuracy of ocean models are continually increasing, particularly through assimilation of observations from ocean observing programmes (e.g. the Global Ocean Observing System, <http://www.ioc-goos.org>) and integration of regional oceanographic features. Many of the data quality issues discussed here are common between terrestrial and marine systems, but they are more prevalent in marine data. Where high quality data are available for some marine species, this allows exploration of more data-intensive modelling approaches.

Modelling approaches

A large number of correlative SDM algorithms are now available (Elith *et al.*, 2006; Ready *et al.*, 2009). Studies that compare correlative SDM methods suggest that different models are not equally appropriate for all applications. For example, when predicting a species' current distribution, methods that included nonlinear responses and interactions are useful (Elith *et al.*, 2006). However, models that perform well in predicting a species' current distribution may not perform as well when applied to project a species' future distribution under climate change (Thuiller, 2004; Morin & Thuiller, 2009). Correlative SDMs are conceptually simple, descriptive and require relatively little data, but as we learn more about the mechanisms and processes that define the biology and ecology of organisms we can build more complex mechanistic or process-based SDMs.

Hence, alternative modelling approaches to correlative models should be explored where possible.

Alternative approaches to correlative SDMs include fully mechanistic eco-physiological SDMs, spatial population dynamics models, 'hybrid' models (that couple correlative SDMs with dynamic dispersal and population process models) and different combinations and permutations of these models (Cheung *et al.*, 2008; Keith *et al.*, 2008; Smolik *et al.*, 2010). Mechanistic eco-physiological SDMs use the principles of thermodynamics to derive models specifically concerned with the transfer of energy and mass (Kearney & Porter, 2009). These models are generated at the level of the individual and have been constructed in both terrestrial (Kearney & Porter, 2004) and marine systems (Megrey *et al.*, 2007; Maury, 2010). Detailed information on species functional traits (morphology, physiology and behavioural responses) as well as proximal environmental data are required to build fully mechanistic models. This approach, however, is often not viable due to data scarcity.

There are benefits and challenges in applying mechanistic eco-physiological SDMs in marine systems. Important processes in these models include the balance of energy (i.e. heat and momentum) and mass. Most marine organisms are permanently under water and their body temperature and tissue salinity is the same as that of the surrounding water. This makes heat and water balance calculations simpler than they are for many terrestrial organisms. However, in resolving energy balance, momentum transfer is a challenging consideration for mechanistic modelling of mobile marine animals such as fish, sea turtles, seals and cetaceans (Peng & Dabiri, 2008; Kearney & Porter, 2009).

Another potential benefit of applying mechanistic models to some marine organisms is that some marine habitats, such as the open ocean, have fewer microclimates than an equivalent area on land. Hence the proximal environmental data required to construct a mechanistic SDM, such as temperature, can be obtained from broad-scale remotely sensed or modelled data sources. Consequently, the time-consuming process of collecting fine-scale environmental data in the field (e.g. Kearney & Porter, 2004) can sometimes be bypassed in marine systems. There are likely to be more marine microclimates in benthic and inter-tidal habitats, although microclimates are also common in the pelagic environment in the vertical dimension, especially in the top few hundred metres of the water column. Certainly, finer-scale observations are needed for building mechanistic SDMs for some groups such as inter-tidal invertebrates (Helmuth, 1998).

Hybrid SDMs, which couple dynamic population and dispersal processes with correlative models, provide a compromise between the data requirements and complexity of a fully mechanistic model and the sometimes oversimplified correlative models (Cheung *et al.*, 2008; Keith *et al.*, 2008). Interestingly, such models have arisen almost simultaneously in both marine (Cheung *et al.*, 2008) and terrestrial (Keith *et al.*, 2008) applications. However, the issues that these hybrid SDMs attempt to resolve (e.g. explicit inclusion of dispersal) still seem to be restricted to the theoretical evaluation of correlative SDMs in

Table 1 A general ranking of the importance of ecological factors when applying species distribution models (SDMs) to marine taxa with different life-history traits and habitats (pelagic and benthic) in relation to terrestrial species.

Systems and species traits/habitats	Ecological factors				
	Ontogenetic shifts	Aggregation	Feeding	Competition	Dispersal
Pelagic non-filter feeding animals (e.g. tuna)	****a	***c	***h,i	*l	*o
Benthic animals (e.g. crabs and coral)	***b	***	**j	***m	**p
Benthic plants (e.g. macroalgae)	**	***f	na	***	**p
Terrestrial species	**c,d	***g	*k	***n	***q,r

***, critical; **important; *less important. Studies that were used as examples in our discussion on ecological factors are listed.

^aMullon *et al.* (2002); ^bHiddink (2003); ^cJones *et al.* (2007); ^dWebb & Peart (2000); ^eHuetmann & Diamond (2006); ^fBellgrove *et al.* (2004); ^gMontoya *et al.* (2009); ^hRedfern *et al.* (2006); ⁱTorres *et al.* (2008); ^jTherriault & Herborg (2008); ^kFernandez *et al.* (2003); ^lBilio & Newmann (2004); ^mPoloczanska *et al.* (2008); ⁿLeathwick & Autin (2001); ^oCarr *et al.* (2003); ^pKinlan & Gaines (2003); ^qNathan *et al.* (2002); ^rMuñoz *et al.* (2004).

terrestrial systems. As previously mentioned, modelling the distribution of species in marine systems may require emphasis on explicitly including different and/or additional processes (such as ontogenetic shifts and feeding) from those that have been included in terrestrial hybrid models.

Spatial population dynamics models, also referred to as dynamic-landscape metapopulation models, have been developed in both terrestrial and marine systems (e.g. Wintle *et al.*, 2005; Figueira, 2009). These models can be similar to hybrid SDMs because both include population processes (i.e. reproduction, mortality and movement). In a hybrid SDM, the movement and carrying capacity of the population dynamics model are linked to the output from a correlative SDM (Cheung *et al.*, 2008; Keith *et al.*, 2008). Therefore, direct effects of each environmental variable on the population dynamics are unknown. In some spatial population dynamic models, such as the marine-based spatial ecosystem and populations dynamics model SEAPODYM, the direct effects of environment variables are modelled explicitly, as are trophic interactions (Lehodey *et al.*, 2008). Mechanistic components might be less developed in SEAPODYM than in other eco-physiological models (Buckley & Buckley, 2010), but this model is particularly appropriate where trophic interactions are of prime importance.

There are unique opportunities for the simplification of some aspects of terrestrial mechanistic SDMs for marine species and further development of hybrid SDMs should include processes that are most important for the distribution of the marine organism being modelled. To assess the accuracy of alternative or correlative SDM approaches, validation of correlative SDM model predictions is required. Methods of evaluating correlative SDM approaches in marine systems are discussed briefly below.

Model evaluation

Methods for evaluating SDMs should focus on the purpose of the model. Validating a prediction of a species' current distribu-

tion requires data from the same space and approximately the same time in which the model was fitted. Typical choices include internal validation (using split data sets or cross-validation) or more rarely, but more robustly, external validation on a completely independent dataset (Guisan *et al.*, 2006). Tests of model performance in historical time periods may provide useful insight into the performance of SDMs for climate change and species invasion applications (Randin *et al.*, 2006; Tingley & Beissinger, 2009). Spatial transferability tests are relevant to both current and future SDM predictions and projections because test results can provide an indication of the stability of modelled relationships through space (Randin *et al.*, 2006). Ultimately, there may be greater opportunities for transferability tests in marine than terrestrial systems. The large number of palaeorecords of historical distributions of marine organisms (e.g. forams, cysts, diatoms, crustaceans and fish scales) provide an opportunity for the validation of model performance over an independent time period. Additionally, the wider geographic ranges of many marine species relative to terrestrial species would allow validation of model performance in novel space. This approach entails models being fitted in one part of a species' geographic range and tested on another part of the range (Randin *et al.*, 2006; Nogués-Bravo *et al.*, 2008).

CONCLUSION

Accurate and realistic models of species distributions greatly assist in managing human threats and improving our understanding of species ecology in marine and terrestrial systems alike. Indeed, most marine SDMs are currently intended for conservation planning applications. Critical evaluations of correlative SDMs on land have highlighted challenges (and in some cases solutions) that are also relevant to marine applications (see Table 1). Dispersal and competition compromise many terrestrial SDM applications, but these factors are often less critical in many marine SDMs. However, other ecological factors rarely

mentioned in the terrestrial SDM literature, such as feeding and ontogenetic shifts, are pertinent to the realism and accuracy of models for many marine species. These are broad generalizations, and variations are evident among marine organisms, particularly across life-history traits and habitats (Table 1). Aggregation can result from dispersal, species interactions and ontogenetic shifts, among other ecological factors, but its intensity may vary across spatial and temporal scales. Consequently, it is critical to both marine and terrestrial applications (Table 1).

Some methods developed in terrestrial applications, accounting for the ecological factors discussed, may benefit marine SDM applications. However, there is a mismatch between progress in model development (mostly targeting dispersal) and identified needs for marine models. Species interactions are important to all marine groups considered, but competition is more likely to be tackled in benthic rather than pelagic SDMs, while the reverse is likely to be true for the importance of feeding. Methods that can be used to explore the relative importance of species interactions, such as path analysis, can be useful when modelling terrestrial and marine species with a variety of different traits. Few SDMs have been built to account for feeding, ontogenetic shifts and aggregation, indicating fertile fields for future research that will require new modelling approaches.

Existing correlative SDM methods have generally been underutilized in marine systems. So far, relatively few marine SDM applications have predicted future impacts of climate change and species invasions. Modelling approaches that extend beyond correlative SDMs are receiving increasing attention for both of these applications. We anticipate rapid future developments in 'hybrid', spatial dynamic population and mechanistic eco-physiological models, with different combinations and permutations of these approaches in both terrestrial and marine systems. Additionally, studies that compare mechanistic, hybrid and correlative SDM predictions (Morin & Thuiller, 2009; Elith *et al.*, 2010) are important in furthering our understanding of factors that limit species ranges. The conceptual and practical issues associated with the applications of SDMs discussed here provide future direction for building more realistic and accurate SDMs in the marine realm.

ACKNOWLEDGEMENTS

Reviews by Scott Burgess, Chris Brown, Richard Fuller and two anonymous referees improved the quality of earlier drafts. This research is supported in part by a CSIRO Climate Adaptation Flagship scholarship and by the Australian Research Grants DP0879365 and FT0991640.

REFERENCES

- Amarasekare, P. (2008) Spatial dynamics of foodwebs. *Annual Review of Ecology Evolution and Systematics*, **39**, 479–500.
- Anderson, R.P., Peterson, A.T. & Gómez-Laverde, M. (2002) Using niche-based GIS modeling to test geographic predictions of competitive exclusion and competitive release in South American pocket mice. *Oikos*, **98**, 3–16.
- Araújo, M.B. & Luoto, M. (2007) The importance of biotic interactions for modelling species distributions under climate change. *Global Ecology and Biogeography*, **16**, 743–753.
- Araújo, M.B. & Pearson, R.G. (2005) Equilibrium of species' distributions with climate. *Ecography*, **28**, 693–695.
- Austin, M.P. (2002) Spatial prediction of species distribution: an interface between ecological theory and statistical modelling. *Ecological Modelling*, **157**, 101–118.
- Bailey, H. & Thompson, P.M. (2009) Using marine mammal habitat modelling to identify priority conservation zones within a marine protected area. *Marine Ecology Progress Series*, **378**, 279–287.
- Beck, M.W. (1995) Size-specific shelter limitation in stone crabs – a test of the demographic bottleneck hypothesis. *Ecology*, **76**, 968–980.
- Bellgrove, A., Clayton, M.N. & Quinn, G.P. (2004) An integrated study of the temporal and spatial variation in the supply of propagules, recruitment and assemblages of intertidal macroalgae on a wave-exposed rocky coast, Victoria, Australia. *Journal of Experimental Marine Biology and Ecology*, **310**, 207–225.
- Bilio, M. & Niermann, U. (2004) Is the comb jelly really to blame for it all? *Mnemiopsis leidyi* and the ecological concerns about the Caspian Sea. *Marine Ecology Progress Series*, **269**, 173–183.
- Boyce, M.S. & McDonald, L.L. (1999) Relating populations to habitats using resource selection functions. *Trends in Ecology and Evolution*, **14**, 268–272.
- Broennimann, O., Thuiller, W., Hughes, G., Midgley, G.F., Alkemade, J.M.R. & Guisan, A. (2006) Do geographic distribution, niche property and life form explain plants' vulnerability to global change? *Global Change Biology*, **12**, 1079–1093.
- Buckley, L.J. & Buckley, L.B. (2010) Toward linking ocean models to fish population dynamics. *Progress in Oceanography*, **84**, 85–88.
- Carr, M.H., Neigel, J.E., Estes, J.A., Andelman, S., Warner, R.R. & Largier, J.L. (2003) Comparing marine and terrestrial ecosystems: implications for the design of coastal marine reserves. *Ecological Applications*, **13**, S90–S107.
- Cheung, W.W.L., Close, C., Lam, V., Watson, R. & Pauly, D. (2008) Application of macroecological theory to predict effects of climate change on global fisheries potential. *Marine Ecology Progress Series*, **365**, 187–197.
- Connell, J.H. (1961) Influence of interspecific competition and other factors on distribution of barnacle *Chthamalus stellatus*. *Ecology*, **42**, 710–723.
- Dahlgren, C.P. & Eggleston, D.B. (2000) Ecological processes underlying ontogenetic habitat shifts in a coral reef fish. *Ecology*, **81**, 2227–2240.
- Dormann, C.F., McPherson, J.M., Araújo, M.B., Bivand, R., Bolliger, J., Carl, G., Davies, R.G., Hirzel, A., Jetz, W., Kissling, W.D., Kühn, I., Ohlemüller, R., Peres-Neto, P.R., Reineking, B., Schröder, B., Schurr, F.M. & Wilson, R. (2007) Methods to account for spatial autocorrelation in the analysis of species distributional data: a review. *Ecography*, **30**, 609–628.
- Elith, J. & Burgman, M.A. (2002) Predictions and their validation: rare plants in the Central Highlands, Victoria, Australia.

- Predicting species occurrences: issues of scale and accuracy* (ed. by J.M. Scott, P.J. Heglund, M.L. Morrison, J.B. Haufler, M.G. Raphael, W.A. Wall and F.B. Samson), pp. 303–314. Island-Press, Corvallis, CA.
- Elith, J. & Leathwick, J. (2009a) Conservation prioritization using species distribution models. *Spatial conservation prioritization: quantitative methods and computational tools* (ed. by A. Moilanen, K.A. Wilson and H. Possingham), pp. 70–93. Oxford University Press, Oxford.
- Elith, J. & Leathwick, J. (2009b) Species distribution models: ecological explanation and prediction across space and time. *Annual Review of Ecology and Systematics*, **40**, 677–697.
- Elith, J., Graham, C.H., Anderson, R.P. *et al.* (2006) Novel methods improve prediction of species' distributions from occurrence data. *Ecography*, **29**, 129–151.
- Elith, J., Kearney, M. & Phillips, S.J. (2010) The art of modelling range-shifting species. *Methods in Ecology and Evolution*, **1**, 330–342.
- Embling, C.B., Gillibrand, P.A., Gordon, J., Shrimpton, J., Stevick, P.T. & Hammond, P.S. (2010) Using habitat models to identify suitable sites for marine protected areas for harbour porpoises (*Phocoena phocoena*). *Biological Conservation*, **143**, 267–279.
- Fernandez, N., Delibes, M., Palomares, F. & Mladenoff, D.J. (2003) Identifying breeding habitat for the Iberian lynx: inferences from a fine-scale spatial analysis. *Ecological Applications*, **13**, 1310–1324.
- Ficetola, G.F., Thuiller, W. & Padoa-Schioppa, E. (2009) From introduction to the establishment of alien species: bioclimatic differences between presence and reproduction localities in the slider turtle. *Diversity and Distributions*, **15**, 108–116.
- Figueira, W.F. (2009) Connectivity or demography: defining sources and sinks in coral reef fish metapopulations. *Ecological Modelling*, **220**, 1126–1137.
- Fortin, M.J., Keitt, T.H., Maurer, B.A., Taper, M.L., Kaufman, D.M. & Blackburn, T.M. (2005) Species' geographic ranges and distributional limits: pattern analysis and statistical issues. *Oikos*, **108**, 7–17.
- Freitas, C., Kovacs, K.M., Ims, R.A. & Lydersen, C. (2008) Predicting habitat use by ringed seals (*Phoca hispida*) in a warming Arctic. *Ecological Modelling*, **217**, 19–32.
- Gaines, S.D., Gaylord, B., Gerber, L.R., Hastings, A. & Kinlan, B.P. (2007) Connecting places: the ecological consequences of dispersal in the sea. *Oceanography*, **20**, 90–99.
- Gause, G.F. (1934) *The struggle for existence*. Williams and Wilkins, Baltimore, MD.
- Grinnell, J. (1904) The origin and distribution of the chestnut-backed chickadee. *The Auk*, **21**, 364–365.
- Guisan, A. & Thuiller, W. (2005) Predicting species distribution: offering more than simple habitat models. *Ecology Letters*, **8**, 993–1009.
- Guisan, A. & Zimmermann, N.E. (2000) Predictive habitat distribution models in ecology. *Ecological Modelling*, **135**, 147–186.
- Guisan, A., Lehmann, A., Ferrier, S., Austin, M., Overton, J.M.C., Aspinall, R. & Hastie, T. (2006) Making better biogeographical predictions of species' distributions. *Journal of Applied Ecology*, **43**, 386–392.
- Halpern, B.S., Gaines, S.D. & Warner, R.R. (2005) Habitat size, recruitment, and longevity as factors limiting population size in stage-structured species. *The American Naturalist*, **165**, 82–94.
- Heikkinen, R.K., Luoto, M., Virkkala, R., Pearson, R.G. & Körber, J.H. (2007) Biotic interactions improve prediction of boreal bird distributions at macro-scales. *Global Ecology and Biogeography*, **16**, 754–763.
- Helmuth, B.S.T. (1998) Intertidal mussel microclimates: predicting the body temperature of a sessile invertebrate. *Ecological Monographs*, **68**, 51–74.
- Hendriks, I.E., Duarte, C.M. & Heip, C.H.R. (2006) Biodiversity research still grounded. *Science*, **312**, 1715.
- Hiddink, J.G. (2003) Modelling the adaptive value of intertidal migration and nursery use in the bivalve *Macoma balthica*. *Marine Ecology Progress Series*, **252**, 173–185.
- Huettmann, F. & Diamond, A.W. (2006) Large-scale effects on the spatial distribution of seabirds in the northwest Atlantic. *Landscape Ecology*, **21**, 1089–1108.
- Hui, C. (2009) On the scaling patterns of species spatial distribution and association. *Journal of Theoretical Biology*, **261**, 481–487.
- Hui, C., Veldtman, R. & McGeoch, M.A. (2010) Measures, perceptions and scaling patterns of aggregated species distributions. *Ecography*, **33**, 95–102.
- Hutchinson, G.E. (1957) Population studies – animal ecology and demography – concluding remarks. *Cold Spring Harbor Symposia on Quantitative Biology*, **22**, 415–427.
- Jiménez-Valverde, A., Lobo, J.M. & Hortal, J. (2008) Not as good as they seem: the importance of concepts in species distribution modelling. *Diversity and Distributions*, **14**, 885–890.
- Johnson, C.J. & Gillingham, M.P. (2008) Sensitivity of species-distribution models to error, bias, and model design: an application to resource selection functions for woodland caribou. *Ecological Modelling*, **213**, 143–155.
- Jones, M.M., Rojas, P.O., Tuomisto, H. & Clark, D.B. (2007) Environmental and neighbourhood effects on tree fern distributions in a Neotropical lowland rain forest. *Journal of Vegetation Science*, **18**, 13–24.
- Kaschner, K., Watson, R., Trites, A.W. & Pauly, D. (2006) Mapping world-wide distributions of marine mammal species using a relative environmental suitability (RES) model. *Marine Ecology Progress Series*, **316**, 285–310.
- Kearney, M. & Porter, W.P. (2004) Mapping the fundamental niche: physiology, climate, and the distribution of a nocturnal lizard. *Ecology*, **85**, 3119–3131.
- Kearney, M. & Porter, W. (2009) Mechanistic niche modelling: combining physiological and spatial data to predict species' ranges. *Ecology Letters*, **12**, 334–350.
- Keith, D.A., Akçakaya, H.R., Thuiller, W., Midgley, G.F., Pearson, R.G., Phillips, S.J., Regan, H.M., Araújo, M.B. & Rebelo, T.G. (2008) Predicting extinction risks under climate change:

- coupling stochastic population models with dynamic bioclimatic habitat models. *Biology Letters*, **4**, 560–563.
- Kharouba, H.M., Algar, A.C. & Kerr, J.T. (2009) Historically calibrated predictions of butterfly species' range shift using global change as a pseudo-experiment. *Ecology*, **90**, 2213–2222.
- Kinlan, B.P. & Gaines, S.D. (2003) Propagule dispersal in marine and terrestrial environments: a community perspective. *Ecology*, **84**, 2007–2020.
- Le Maitre, D.C., Thuiller, W. & Schonegevel, L. (2008) Developing an approach to defining the potential distributions of invasive plant species: a case study of *Hakea* species in South Africa. *Global Ecology and Biogeography*, **17**, 569–584.
- Leathwick, J.R. & Austin, M.P. (2001) Competitive interactions between tree species in New Zealand's old-growth indigenous forests. *Ecology*, **82**, 2560–2573.
- Leathwick, J., Moilanen, A., Francis, M., Elith, J., Taylor, P., Julian, K., Hastie, T. & Duffy, C. (2008) Novel methods for design and evaluation of marine protected areas in offshore waters. *Conservation Letters*, **1**, 91–102.
- Lee, H., Reusser, D.A., Olden, J.D., Smith, S.S., Graham, J., Burkett, V., Dukes, J.S., Piorkowski, R.J. & McPhedran, J. (2008) Integrated monitoring and information systems for managing aquatic invasive species in a changing climate. *Conservation Biology*, **22**, 575–584.
- Legendre, P. & Legendre, L. (1998) *Numerical ecology*, 2nd edn. Elsevier Science, Amsterdam.
- Lehodey, P. & Maury, O. (2010) Climate impacts on oceanic top predators (CLIOTOP): introduction to the special issue of the CLIOTOP International Symposium, La Paz, Mexico, 3–7 December 2007. Preface. *Progress in Oceanography*, **86**, 1–7.
- Lehodey, P., Senina, I. & Murtugudde, R. (2008) A spatial ecosystem and populations dynamics model (SEAPODYM) – modeling of tuna and tuna-like populations. *Progress in Oceanography*, **78**, 304–318.
- Levin, S.A. (1994) Patchiness in marine and terrestrial systems – from individuals to populations. *Philosophical Transactions of the Royal Society B: Biological Sciences*, **343**, 99–103.
- Lima, F.P., Ribeiro, P.A., Queiroz, N., Xavier, R., Tarroso, P., Hawkins, S.J. & Santos, A.M. (2007) Modelling past and present geographical distribution of the marine gastropod *Patella rustica* as a tool for exploring responses to environmental change. *Global Change Biology*, **13**, 2065–2077.
- Logerwell, E.A. & Hargreaves, N.B. (1996) The distribution of sea birds relative to their fish prey off Vancouver Island: opposing results at large and small spatial scales. *Fisheries Oceanography*, **5**, 163–175.
- Logerwell, E.A. & Smith, P.E. (2001) Mesoscale eddies and survival of late stage Pacific sardine (*Sardinops sagax*) larvae. *Fisheries Oceanography*, **10**, 13–25.
- Longhurst, A. (2007) *Ecological geography of the sea*. Academic Press, Burlington, MA.
- Lotka, A.J. (1925) *Elements of physical biology*. Williams and Wilkins, Baltimore, MD.
- Manzur, T., Barahona, M. & Navarrete, S.A. (2010) Ontogenetic changes in habitat use and diet of the sea-star *Heliaster helianthus* on the coast of central Chile. *Journal of the Marine Biological Association of the United Kingdom*, **90**, 537–546.
- Maury, O. (2010) An overview of APECOSM, a spatialized mass balanced “Apex Predators ECOSystem Model” to study physiologically structured tuna population dynamics in their ecosystem. *Progress in Oceanography*, **84**, 113–117.
- Maxwell, D.L., Stelzenmuller, V., Eastwood, P.D. & Rogers, S.I. (2009) Modelling the spatial distribution of plaice (*Pleuronectes platessa*), sole (*Solea solea*) and thornback ray (*Raja clavata*) in UK waters for marine management and planning. *Journal of Sea Research*, **61**, 258–267.
- Megrey, B.A., Rose, K.A., Klumb, R.A., Hay, D.E., Werner, F.E., Eslinger, D.L. & Smith, S.L. (2007) A bioenergetics-based population dynamics model of Pacific herring (*Clupea harengus pallasii*) coupled to a lower trophic level nutrient–phytoplankton–zooplankton model: description, calibration, and sensitivity analysis. *Ecological Modelling*, **202**, 144–164.
- Millennium Ecosystem Assessment (2005) *Ecosystems and human well-being: biodiversity synthesis*. World Resources Institute, Washington, DC.
- Montoya, D., Purves, D.W., Urbieto, I.R. & Zavala, M.A. (2009) Do species distribution models explain spatial structure within tree species ranges? *Global Ecology and Biogeography*, **18**, 662–673.
- Morin, X. & Thuiller, W. (2009) Comparing niche- and process-based models to reduce prediction uncertainty in species range shifts under climate change. *Ecology*, **90**, 1301–1313.
- Moser, H.G. & Smith, P.E. (1993) Larval fish assemblages and oceanic boundaries. *Bulletin of Marine Science*, **53**, 283–289.
- Mullon, C., Cury, P. & Penven, P. (2002) Evolutionary individual-based model for the recruitment of anchovy (*Engraulis capensis*) in the southern Benguela. *Canadian Journal of Fisheries and Aquatic Sciences*, **59**, 910–922.
- Muñoz, J., Felicísimo, A.M., Cabezas, F., Burgaz, A.R. & Martínez, I. (2004) Wind as a long-distance dispersal vehicle in the Southern Hemisphere. *Science*, **304**, 1144–1147.
- Murphy, H.M. & Jenkins, G.P. (2010) Observational methods used in marine spatial monitoring of fishes and associated habitats: a review. *Marine and Freshwater Research*, **61**, 236–252.
- Nathan, R., Katul, G.G., Horn, H.S., Thomas, S.M., Oren, R., Avissar, R., Pacala, S.W. & Levin, S.A. (2002) Mechanisms of long-distance dispersal of seeds by wind. *Nature*, **418**, 409–413.
- Newbold, T. (2010) Applications and limitations of museum data for conservation and ecology, with particular attention to species distribution models. *Progress in Physical Geography*, **34**, 3–22.
- Nogués-Bravo, D., Rodríguez, J., Hortal, J., Batra, P. & Araújo, M. (2008) Climate change, humans, and the extinction of the woolly mammoth. *PLoS Biology*, **6**, 685–692.
- Panigada, S., Zanardelli, M., MacKenzie, M., Donovan, C., Mélin, F. & Hammond, P.S. (2008) Modelling habitat preferences for fin whales and striped dolphins in the Pelagos sanctuary (western Mediterranean Sea) with physiographic and

- remote sensing variables. *Remote Sensing of Environment*, **112**, 3400–3412.
- Pearman, P.B., Guisan, A., Broennimann, O. & Randin, C.F. (2008) Niche dynamics in space and time. *Trends in Ecology and Evolution*, **23**, 149–158.
- Pearson, R.G. & Dawson, T.P. (2003) Predicting the impacts of climate change on the distribution of species: are bioclimate envelope models useful? *Global Ecology and Biogeography*, **12**, 361–371.
- Pearson, R.G., Raxworthy, C.J., Nakamura, M. & Peterson, A.T. (2007) Predicting species distributions from small numbers of occurrence records: a test case using cryptic geckos in Madagascar. *Journal of Biogeography*, **34**, 102–117.
- Peng, J.F. & Dabiri, J.O. (2008) An overview of a Lagrangian method for analysis of animal wake dynamics. *Journal of Experimental Biology*, **211**, 280–287.
- Phillips, S.J. (2008) Transferability, sample selection bias and background data in presence-only modelling: a response to Peterson *et al.* (2007). *Ecography*, **31**, 272–278.
- Phillips, S.J., Dudík, M., Elith, J., Graham, C.H., Lehmann, A., Leathwick, J. & Ferrier, S. (2009) Sample selection bias and presence-only distribution models: implications for background and pseudo-absence data. *Ecological Applications*, **19**, 181–197.
- Poloczanska, E.S., Hawkins, S.J., Southward, A.J. & Burrows, M.T. (2008) Modeling the response of populations of competing species to climate change. *Ecology*, **89**, 3138–3149.
- Pulliam, H.R. (2000) On the relationship between niche and distribution. *Ecology Letters*, **3**, 349–361.
- Randin, C.F., Dirnböck, T., Dullinger, S., Zimmermann, N.E., Zappa, M. & Guisan, A. (2006) Are niche-based species distribution models transferable in space? *Journal of Biogeography*, **33**, 1689–1703.
- Ready, J., Kaschner, K., South, A.B., Eastwood, P.D., Rees, T., Rius, J., Agbayani, E., Kullander, S. & Froese, R. (2009) Predicting the distributions of marine organisms at the global scale. *Ecological Modelling*, **221**, 467–478.
- Redfern, J.V., Ferguson, M.C., Becker, E.A., Hyrenbach, K.D., Good, C., Barlow, J., Kaschner, K., Baumgartner, M.F., Forney, K.A., Ballance, L.T., Fauchald, P., Halpin, P., Hamazaki, T., Pershing, A.J., Qian, S.S., Read, A., Reilly, S.B., Torres, L. & Werner, F. (2006) Techniques for cetacean-habitat modeling. *Marine Ecology Progress Series*, **310**, 271–295.
- Richardson, A.J. & Poloczanska, E.S. (2008) Ocean science – under-resourced, under threat. *Science*, **320**, 1294–1295.
- Ritchie, E.G., Martin, J.K., Johnson, C.N. & Fox, B.J. (2009) Separating the influences of environment and species interactions on patterns of distribution and abundance: competition between large herbivores. *Journal of Animal Ecology*, **78**, 724–731.
- Ritz, D.A. (1994) Social aggregation in pelagic invertebrates. *Advances in Marine Biology*, **30**, 155–216.
- Russell, J.C. & Clout, M.N. (2004) Modelling the distribution and interaction of introduced rodents on New Zealand offshore islands. *Global Ecology and Biogeography*, **13**, 497–507.
- Schurr, F.M., Midgley, G.E., Rebelo, A.G., Reeves, G., Poschod, P. & Higgins, S.I. (2007) Colonization and persistence ability explain the extent to which plant species fill their potential range. *Global Ecology and Biogeography*, **16**, 449–459.
- Skelly, D.K., Joseph, L.N., Possingham, H.P., Freidenburg, L.K., Farrugia, T.J., Kinnison, M.T. & Hendry, A.P. (2007) Evolutionary responses to climate change. *Conservation Biology*, **21**, 1353–1355.
- Smolik, M.G., Dullinger, S., Essl, F., Kleinbauer, I., Leitner, M., Peterseil, J., Stadler, L.M. & Vogl, G. (2010) Integrating species distribution models and interacting particle systems to predict the spread of an invasive alien plant. *Journal of Biogeography*, **37**, 411–422.
- Steele, J.H. (1991) Can ecological theory cross the land sea boundary. *Journal of Theoretical Biology*, **153**, 425–436.
- Svenning, J.C., Normand, S. & Skov, F. (2006) Range filling in European trees. *Journal of Biogeography*, **33**, 2018–2021.
- Therriault, T.W. & Herborg, L.-M. (2008) A qualitative biological risk assessment for vase tunicate *Ciona intestinalis* in Canadian waters: using expert knowledge. *ICES Journal of Marine Science*, **65**, 781–787.
- Thomas, C.D., Cameron, A., Green, R.E., Bakkenes, M., Beaumont, L.J., Collingham, Y.C., Erasmus, B.F.N., de Siqueira, M.F., Grainger, A., Hannah, L., Hughes, L., Huntley, B., van Jaarsveld, A.S., Midgley, G.F., Miles, L., Ortega-Huerta, M.A., Peterson, A.T., Phillips, O.L. & Williams, S.E. (2004) Extinction risk from climate change. *Nature*, **427**, 145–148.
- Thuiller, W. (2004) Patterns and uncertainties of species' range shifts under climate change. *Global Change Biology*, **10**, 2020–2027.
- Tingley, M.W. & Beissinger, S.R. (2009) Detecting range shifts from historical species occurrences: new perspectives on old data. *Trends in Ecology and Evolution*, **24**, 625–633.
- Torres, L.G., Rosel, P.E., D'Agrosa, C. & Read, A.J. (2003) Improving management of overlapping bottlenose dolphin ecotypes through spatial analysis and genetics. *Marine Mammal Science*, **19**, 502–514.
- Torres, L.G., Read, A.J. & Halpin, P. (2008) Fine-scale habitat modeling of a top marine predator: do prey data improve predictive capacity? *Ecological Applications*, **18**, 1702–1717.
- Valavanis, V.D., Pierce, G.J., Zuur, A.F., Palialexis, A., Saveliev, A., Katara, I. & Wang, J.J. (2008) Modelling of essential fish habitat based on remote sensing, spatial analysis and GIS. *Hydrobiologia*, **612**, 5–20.
- VanDerWal, J., Shoo, L.P., Graham, C. & William, S.E. (2009) Selecting pseudo-absence data for presence-only distribution modeling: how far should you stray from what you know? *Ecological Modelling*, **220**, 589–594.
- Volterra, V. (1926) Fluctuations in the abundance of a species considered mathematically. *Nature*, **118**, 558–560.
- Walther, G.R., Roques, A., Hulme, P.E. *et al.* (2009) Alien species in a warmer world: risks and opportunities. *Trends in Ecology and Evolution*, **24**, 686–693.
- Webb, C.O. & Peart, D.R. (2000) Habitat associations of trees and seedlings in a Bornean rain forest. *Journal of Ecology*, **88**, 464–478.

- Wieters, E.A., Gaines, S.D., Navarrete, S.A., Blanchette, C.A. & Menge, B.A. (2008) Scales of dispersal and the biogeography of marine predator-prey interactions. *The American Naturalist*, **171**, 405–417.
- Williams, N.S.G., Hahs, A.K. & Morgan, J.W. (2008) A dispersal-constrained habitat suitability model for predicting invasion of alpine vegetation. *Ecological Applications*, **18**, 347–359.
- Wilson, S.K., Burgess, S.C., Cheal, A.J., Emslie, M., Fisher, R., Miller, I., Polunin, N.V.C. & Sweatman, H.P.A. (2008) Habitat utilization by coral reef fish: implications for specialists vs. generalists in a changing environment. *Journal of Animal Ecology*, **77**, 220–228.
- Wintle, B.A., Bekessy, S.A., Venier, L.A., Pearce, J.L. & Chisholm, R.A. (2005) Utility of dynamic-landscape metapopulation models for sustainable forest management. *Conservation Biology*, **19**, 1930–1943.
- Wirsing, A.J., Heithaus, M.R. & Dill, L.M. (2007) Can measures of prey availability improve our ability to predict the abundance of large marine predators? *Oecologia*, **153**, 563–568.
- Yates, C.J., McNeill, A., Elith, J. & Midgley, G.F. (2010) Assessing the impacts of climate change and land transformation on *Banksia* in the South West Australian Floristic Region. *Diversity and Distributions*, **16**, 187–201.

BIOSKETCHES

Lucy Robinson is a doctoral student with a broad interest in theoretical and applied ecology in marine and terrestrial systems. Her research interests concern finding optimal methods for assessing anthropogenic impacts, and she is currently focused on modelling future impacts of climate change on pelagic fish species and implications for spatial management.

Jane Elith is a research fellow at the University of Melbourne, focusing on methods for modelling the distributions of species and biodiversity. She is interested in both theory and the application of these methods, in all ecosystems.

Anthony J. Richardson holds a joint position with the University of Queensland and the CSIRO Marine and Atmospheric Research Division. He is a quantitative marine ecologist interested in the structure and function of pelagic ecosystems. He uses this information to delve into the impacts of global change on our oceans and better manage these fragile and changing systems.

Editor: José Alexandre F. Diniz-Filho