

Red Light Represses the Photophysiology of the Scleractinian Coral *Stylophora pistillata*

Tim Wijgerde^{1*}, Anne van Melis¹, Catarina I. F. Silva², Miguel C. Leal^{3,4}, Luc Vogels⁵, Claudia Mutter⁵, Ronald Osinga¹

1 Aquaculture and Fisheries Group, Department of Animal Sciences, Wageningen University and Research centre, Wageningen, The Netherlands, **2** Biological Oceanography, Royal Netherlands Institute for Sea Research, 't Horntje, The Netherlands, **3** Departamento de Biologia & CESAM, Universidade de Aveiro, Aveiro, Portugal, **4** Skidaway Institute of Oceanography, University of Georgia, Savannah, Georgia, United States of America, **5** Philips Lighting, BG Light Sources & Electronics LED Platform Development, Eindhoven, The Netherlands

Abstract

Light spectrum plays a key role in the biology of symbiotic corals, with blue light resulting in higher coral growth, zooxanthellae density, chlorophyll *a* content and photosynthesis rates as compared to red light. However, it is still unclear whether these physiological processes are blue-enhanced or red-repressed. This study investigated the individual and combined effects of blue and red light on the health, zooxanthellae density, photophysiology and colouration of the scleractinian coral *Stylophora pistillata* over 6 weeks. Coral fragments were exposed to blue, red, and combined 50/50% blue red light, at two irradiance levels (128 and 256 $\mu\text{mol m}^{-2} \text{s}^{-1}$). Light spectrum affected the health/survival, zooxanthellae density, and NDVI (a proxy for chlorophyll *a* content) of *S. pistillata*. Blue light resulted in highest survival rates, whereas red light resulted in low survival at 256 $\mu\text{mol m}^{-2} \text{s}^{-1}$. Blue light also resulted in higher zooxanthellae densities compared to red light at 256 $\mu\text{mol m}^{-2} \text{s}^{-1}$, and a higher NDVI compared to red and combined blue red light. Overall, our results suggest that red light negatively affects the health, survival, symbiont density and NDVI of *S. pistillata*, with a dominance of red over blue light for NDVI.

Citation: Wijgerde T, van Melis A, Silva CIF, Leal MC, Vogels L, et al. (2014) Red Light Represses the Photophysiology of the Scleractinian Coral *Stylophora pistillata*. PLoS ONE 9(3): e92781. doi:10.1371/journal.pone.0092781

Editor: Christian R. Voolstra, King Abdullah University of Science and Technology, Saudi Arabia

Received: December 9, 2013; **Accepted:** February 26, 2014; **Published:** March 21, 2014

Copyright: © 2014 Wijgerde et al. This is an open-access article distributed under the terms of the Creative Commons Attribution License, which permits unrestricted use, distribution, and reproduction in any medium, provided the original author and source are credited.

Funding: This study was funded by the EU Seventh Framework Programme (FP7 / 2007–2013) under grant agreement no. 244161 (FORCE). The funders had no role in study design, data collection and analysis, decision to publish, or preparation of the manuscript.

Competing Interests: LV and CM are employed by Philips Lighting, BG LS&E LED Platform Development, Eindhoven, The Netherlands, and supplied the LED fixtures used in this study. This does not alter the authors' adherence to PLOS ONE policies on sharing data and materials.

* E-mail: wijgerde@coralpublications.com

Introduction

Light plays a key role in the growth, reproduction and physiology of scleractinian corals that host phototrophic symbionts [1,2,3,4]. Until now, most studies on the effects of light on zooxanthellate corals have focused on the quantitative role of irradiance within the visible light spectrum [reviewed by 1]. In contrast, only few studies investigated the individual roles played by different colours within the visible light spectrum [5,6,7,8]. It is known that not all wavelengths are equally used by different symbiotic coral species, which is associated with ecophysiological differences among coral and symbiont species [9,10] and with selective absorption of visible light by seawater [8]. Absorption is greatest for the long wavelengths (e.g. red [8]) and, therefore, shorter wavelengths (e.g. blue) penetrate deeper into the seawater column and increase in relative proportion with depth. Blue light plays a key role in coral growth, colouration, and photophysiology, promoting coral and zooxanthellae growth, chlorophyll *a* content (either through increased zooxanthellae density or higher chlorophyll *a* per zooxanthella), fluorescent protein production, and increased photosynthesis rates [5,6,7,8]. Recently, Wang et al. [11] studied the role of light spectrum on the growth and photobiology of *ex hospite* zooxanthellae (*Symbiodinium* sp., clade B), and found that blue light is essential to maintain the cell cycle and growth of these dinoflagellates. Red and infrared light resulted in little to no

mitotic division of the *Symbiodinium* sp. used, respectively. Although the studies of Kinzie et al. [5] and Wang et al. [11] show that coral and zooxanthellae growth are blue-enhanced, it is still unclear whether red light acts neutrally or inhibitory on coral growth, zooxanthellae density, and photophysiology.

To address the question whether red light acts neutrally or repressively on coral photophysiology, this study investigated the individual and combined effects of narrow-bandwidth blue and red light on the health, zooxanthellae density and photophysiology of the scleractinian coral *Stylophora pistillata*. In addition, we determined how these light regimes affected the overall colouration of this species, as D'Angelo et al. [7] found that the production of colourful fluorescent host pigments, possibly acting as photoprotectants and antioxidants [12,13,14], is enhanced by blue light. We exposed *S. pistillata* fragments to narrow-bandwidth blue and red light, and a combination of the two, at two irradiance levels (128 and 256 $\mu\text{mol m}^{-2} \text{s}^{-1}$). These irradiance levels represent the amount of blue and red irradiance found within in the first 10 meters of the seawater column, based on a photosynthetic photon flux of 2,000 $\mu\text{mol m}^{-2} \text{s}^{-1}$ at sea level [15,16] and seawater light attenuation [8]. A full spectrum light source was also included as a control to allow for comparison with previous studies [4,17]. The findings of this study contribute to our understanding of the interplay between blue and red light on coral

photophysiology. In addition, our findings may benefit sustainable coral aquaculture, which is reliant upon attractive colouration and reduced culture costs of captive-bred corals [4,17,18].

Materials and Methods

Ethics Statement

Captive-bred corals were obtained from Burgers' Zoo BV (Arnhem, The Netherlands). The experiment was conducted at Wageningen University (Wageningen, The Netherlands), with permission from Burgers' Zoo BV. No approval from an ethics committee was required as scleractinian corals are exempted from legislation concerning the use of laboratory animals in the European Union (Directive 2010/63/EU).

Coral Fragmentation and Husbandry

The Indo-Pacific scleractinian coral *Stylophora pistillata* (Esper 1797) was used in this study. Coral fragments ($N=70$) were randomly cut from several randomly selected colonies (all of identical genetic origin) and vertically glued onto 5×5 cm PVC tiles (Wageningen UR, Wageningen, The Netherlands) using cyanoacrylate (Gamma BV, Wageningen, The Netherlands). Only the growing tips were cut, resulting in uniform fragments roughly 1 cm in length. All fragments were allowed to recover for 7 weeks in a 400 L holding aquarium before the onset of the 6-week experiment. The holding aquarium was provided with full spectrum white light (Fig. 1), at an irradiance of $190 \mu\text{mol m}^{-2} \text{s}^{-1}$ (12 h:12 h light:dark regime), created by two 4x54W T5 fixtures (Elke Müller Aquarientechnik, Hamm, Germany). Water flow was provided by one Turbelle nanostream 6085 circulation pump (Tunze Aquarientechnik GmbH, Penzberg, Germany) providing a total flow rate of $8,000 \text{ L h}^{-1}$. The parent colonies, which were all of the same genotype, were previously cultured for approximately 5 years at Wageningen UR under similar conditions after being obtained from Burgers' Zoo.

In the experimental system (water volume approximately 3,000 L), water flow was provided by four Turbelle nanostream 6085 circulation pumps (Tunze Aquarientechnik GmbH, Penzberg, Germany) providing a total flow rate of $32,000 \text{ L h}^{-1}$. Water flow rate around the corals was measured with a current velocity meter (Model 2100, Swoffer Instruments, Inc., Seattle, USA) in 10 cm intervals for each experimental group, and ranged between 10 and 13 cm s^{-1} on average. The system was equipped with a MCE 600 foam fractionator (D-D The Aquarium Solution Ltd., Ilford, UK) and a 20 W UVC-light (Aqua Holland, Dordrecht, The Netherlands) powered by a $1,000 \text{ L h}^{-1}$ aquarium pump (Eheim GmbH & Co. KG, Deizisau, Germany) to maintain water quality and clarity [19]. Constant salinity was ensured by a float sensor (Aqua Holland, Dordrecht, The Netherlands) connected to a $1,000 \text{ L h}^{-1}$ aquarium pump (Eheim GmbH & Co. KG, Deizisau, Germany), which supplied deionised water from a 90 L holding tank. The corals were fed with 25 ml of *Artemia* nauplii suspension (approximately $3,000 \text{ nauplii mL}^{-1}$) twice a week. Coral PVC plates were kept free of algae by biweekly cleaning with a small brush in a bucket of system water. Water parameters were maintained at the following levels: salinity $35.2 \pm 0.2 \text{ g L}^{-1}$, temperature $26.0 \pm 0.4^\circ\text{C}$, pH 8.2 ± 0.3 , ammonium-N $0.01 \pm 0.01 \text{ mg L}^{-1}$, nitrate-N $0.30 \pm 0.05 \text{ mg L}^{-1}$, phosphate-P $0.28 \pm 0.03 \text{ mg L}^{-1}$, calcium $378 \pm 39 \text{ mg L}^{-1}$, alkalinity $3.49 \pm 0.34 \text{ mEq L}^{-1}$ ($N=2-18$). Trace elements were measured once with inductively coupled plasma mass spectrometry (ICP-MS), after which the following concentrations were obtained: manganese $1.41 \mu\text{g L}^{-1}$, zinc $79.70 \mu\text{g L}^{-1}$, cadmium $<0.6 \mu\text{g L}^{-1}$, cobalt $<0.5 \mu\text{g L}^{-1}$, chromium $<0.5 \mu\text{g L}^{-1}$, copper

$<3.0 \mu\text{g L}^{-1}$, iron $<6.0 \mu\text{g L}^{-1}$, nickel $<1.2 \mu\text{g L}^{-1}$ and lead $<4.0 \mu\text{g L}^{-1}$.

Light Treatments

After the recovery period, fragments were randomly assigned to seven different light treatments ($N=10$ per treatment); blue, red, and 50/50% blue red light, provided at a total irradiance of 128 and $256 \mu\text{mol m}^{-2} \text{s}^{-1}$ each, and full-spectrum white light at $128 \mu\text{mol m}^{-2} \text{s}^{-1}$ (Fig. 1). A 12 h:12 h light:dark regime was used for all treatments. The red, blue and 50/50% blue red light treatments were created with six custom-built 120–168W LED fixtures (Philips NV, Eindhoven, The Netherlands). To obtain two irradiance levels, three out of the six LED fixtures were dimmed using custom-built software (Philips NV, Eindhoven, The Netherlands). Full spectrum white light, created by one 4x80W T5 fixture (Elke Müller Aquarientechnik, Hamm, Germany) was included as a control, the supplied light spectrum being identical to that of the holding system. The corals, with their PVC tiles, were placed in PVC holding plates (Wageningen UR, Wageningen, The Netherlands), which in turn were placed on stainless steel tables with a seawater-proof black coating (Wageningen UR, Wageningen, The Netherlands). After positioning the tables, the corals resided at a depth of 43 cm (experimental treatments) and 74 cm (control group), respectively. To ensure equal light and flow regimes for all corals within each treatment, fragments were rotated within their holding plates twice a week during the entire experimental period.

Irradiance level (based on the photosynthetically active spectrum region or PAR, $\sim 400\text{--}700 \text{ nm}$) was measured *in situ* around the corals in the experimental tank, at 10 cm space intervals for each group, using a LI-COR 192SA quantum underwater sensor (LI-COR, Lincoln, USA). Irradiance levels were adjusted to either 128 or $256 \mu\text{mol m}^{-2} \text{s}^{-1}$ for each group except the control, for which only $128 \mu\text{mol m}^{-2} \text{s}^{-1}$ was used. The light spectra provided by the LED and T5 fixtures were determined with a calibrated HR4000 spectrometer (Ocean Optics, Dunedin, USA), which measures light in a 380–780 nm spectral range (Fig. 1). The blue LED fixture (168 W) emitted a light spectrum with a peak at 452 nm (73 nm bandwidth) and the red LED fixture (120 W) showed a peak at 665 nm (74 nm bandwidth). The 50/50% blue red LED fixture (144 W) showed a combination of the blue and red spectra (Fig. 1). The T5 full spectrum control light exhibited various peaks across the visible spectrum. Most notably, the control light emitted a significant amount of blue light, with a blue to red ratio of approximately 3. A spectral analysis was conducted for each of the two irradiance intervals applied, which revealed that spectrum was not affected by irradiance level.

Zooxanthellae Density

Zooxanthellae density of *S. pistillata* fragments was determined after six weeks exposure to the light treatments. Four fragments from each treatment were randomly selected and cut from their PVC plates. These were subsequently weighed using the buoyant weight technique and transferred to 50 ml tubes. Tissue was removed by leading a jetstream of pressurized air through the tubes for 1 minute. Afterwards, 10 ml of artificial seawater (ASW) was added and each tube was shaken vigorously for 3 minutes to remove all tissue from the wall of the tube and the skeleton. Each coral skeleton was removed with tweezers and the tube centrifuged for 10 minutes at 4°C and 4,000 rpm. The supernatant, containing the animal fraction, was carefully removed and the pellet, containing the heavier zooxanthellae was resuspended in 750 μL ASW. Total volume of each suspension was determined using a 1,000 μL pipette. Small volumes of homogenised samples were transferred to a Neubauer improved counting chamber

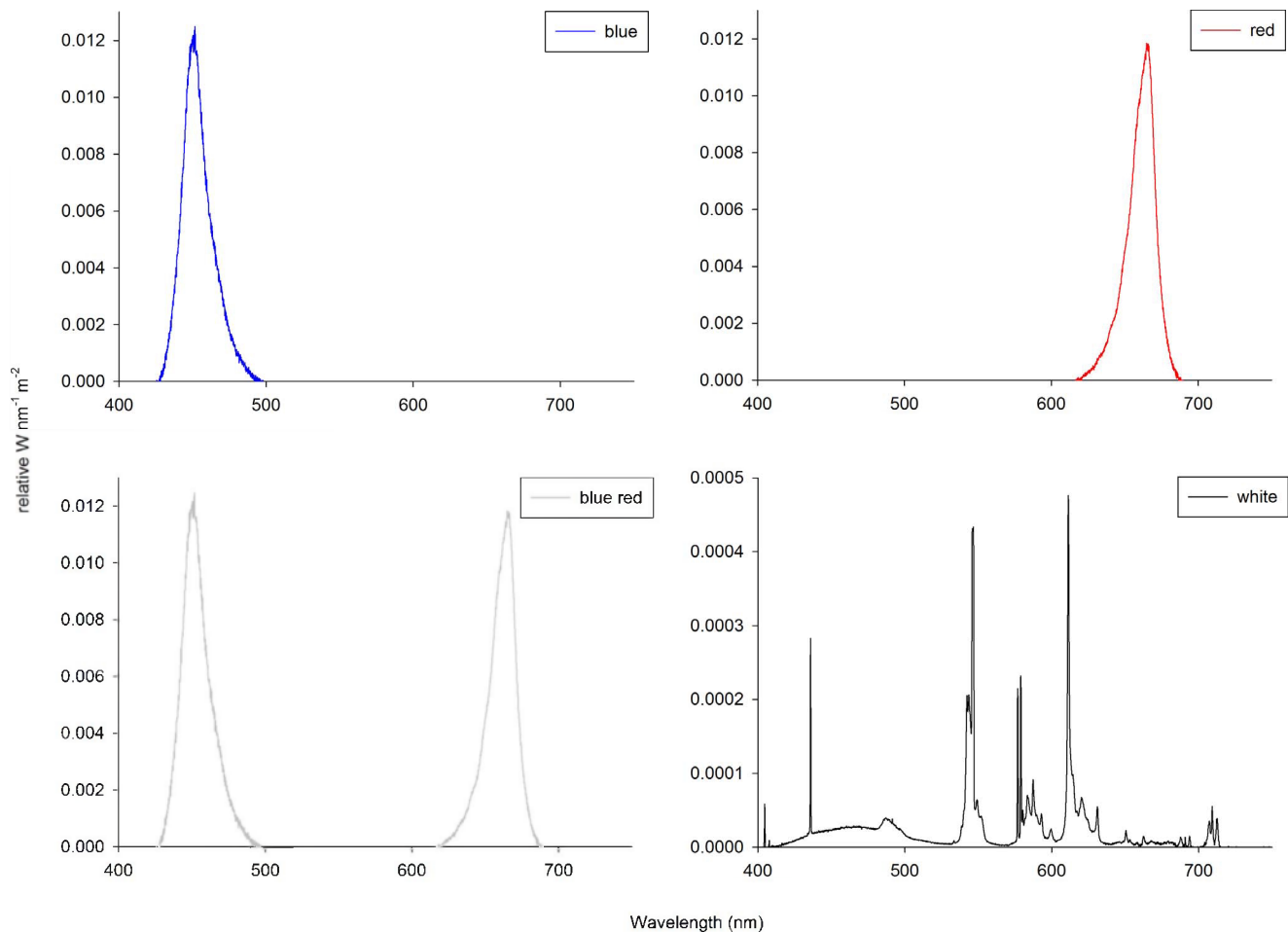


Figure 1. Spectral analysis of the LED and T5 fixtures used for the experiment, representative for both irradiance levels used.
doi:10.1371/journal.pone.0092781.g001

(LO-Laboroptik Ltd, Lancing, UK), and zooxanthellae scored. Finally, zooxanthellae density was calculated using the pellet volume and buoyant weight of each coral fragment. The accuracy of this method was assured by using branching corals with a highly constant surface/volume and surface/mass ratio [4].

Maximum Quantum Yield

Pulse Amplitude Modulation (PAM) fluorometry was used to non-intrusively monitor the maximum quantum yield (MQY) of photosystem II within the zooxanthellae [20]. A PAM fluorometer (Heinz Walz GmbH, Effeltrich, Germany) was used to measure MQY on two sides of each coral fragment. These measurement positions were kept constant during the experiment. All measurements were performed weekly *in situ*, 1–2 h before the start of the daylight period, to prevent photosystem activation. Measuring and saturating lights were provided by a full spectrum lamp and delivered to the sample by a 5 mm diameter plastic fibre optic cable. The fibre optic was positioned approximately 2 mm from the surface of the coral fragment, after which a saturating pulse of 1.2 s was applied to determine the minimum or dark-level fluorescence (F_0), and maximum fluorescence (F_M). F_0 and F_M were used to determine the MQY of PSII using the following formula [20]:

$$MQY = \frac{V_V}{F_M} = \frac{(F_M - F_0)}{F_M}$$

Coral Spectral Reflectance and NDVI

Diffusive reflectance spectra were measured weekly over a 190–892 nm bandwidth, with a spectral resolution of 0.33 nm, using a USB2000 spectrometer (USB2000-VIS-NIR, grating #3, Ocean Optics, Dunedin, USA) connected to a 400 μ m diameter fibre optic cable (QP400-2-VIS/NIR-BX, Ocean Optics, Dunedin, USA). To minimise background reflection, each coral fragment was removed from the aquarium and placed in a black, Teflon-coated container, filled with water from the experimental system. The fibre optic was maintained perpendicular to the coral surface, at a fixed distance, defined to match a view field covering a circular area of approximately 3 mm diameter on the surface of each coral fragment. During measurements, the coral fragments and the reference white panel (see below) were measured under a full spectrum halogen light (Philips, Eindhoven, The Netherlands), aimed at an approximate 45° angle to the table. The light spectrum reflected from each coral fragment was normalised to the spectrum reflected from a white reference standard (WS-1-SL Spectralon Reference Standard, Ocean Optics, Dunedin, USA).

The reflectance spectrum measured in the dark was subtracted from both spectra to account for the dark current noise of the spectrometer. All coral fragments were measured on four different sides each. These measurement positions were kept constant during the experiment. The four measurements were averaged before being used for subsequent calculations.

The Normalised Difference Vegetation Index (NDVI) [21] was used as a proxy for chlorophyll *a* content [17,22] and calculated with the formula below, where R_{750} and R_{675} represent the average diffusive reflectance in the intervals of 749.73–750.39 nm and 674.87–675.55 nm, respectively.

$$NDVI = \frac{R_{750} - R_{675}}{R_{750} + R_{675}}$$

Photographic Analysis

At the end of the experimental treatment, three corals from each experimental treatment were randomly selected for close-up photography. Each coral was placed in a 60 L aquarium with water from the experimental system (approximately 40 L), and individually photographed with a D5000 DSLR camera equipped with a Nikkor AF-D 60 mm macro lens (Nikon, Tokyo, Japan). An external SB700 flash unit (Nikon, Tokyo, Japan) was positioned approximately 30 cm above the coral for additional illumination. All corals were photographed using the same camera and flash settings, including white balance, aperture, exposure time and ISO sensitivity. A 5×5 cm PVC plate was used for scale.

Data Analysis

Several corals from various treatments showed necrosis from week 4 onwards. To determine MQY, reflectance and NDVI of live coral tissue only, we omitted data from necrotic and dead colonies. Normality of data was tested by plotting residuals of each dataset versus predicted values, and by performing a Shapiro-Wilk test. Homogeneity of variances was determined using Levene's test. All data were found to be normally distributed and homoscedastic after a $^{10}\log$ transformation ($P>0.050$). We used a two-way factorial ANOVA to test the (interactive) effects of spectrum and irradiance on zooxanthellae densities, MQY and NDVI, and a mixed factorial ANOVA to test for differences in MQY between week 1 and 6. A Bonferroni *post-hoc* test was used to determine differences between spectrum levels. Simple effects analysis was employed to break down interactive effects. A $P<0.050$ value was considered statistically significant. Statistical analysis was performed with SPSS Statistics 20 (IBM, Somers, USA). Graphs were plotted with SigmaPlot 12 (Systat software, San Jose, USA). All data presented are expressed as means + standard deviation, unless stated otherwise.

Results

Coral Health and Survival

During the experiment, corals exhibited different health and survival patterns between treatments (Fig. 2). After week 3, corals grown under red and blue red light at an irradiance of $256 \mu\text{mol m}^{-2} \text{s}^{-1}$ (red 256 and blue red 256) started to show necrosis, which continued to progress towards mortality after week 4 and beyond. In addition, corals grown under red and white control light at an irradiance of $128 \mu\text{mol m}^{-2} \text{s}^{-1}$ (red 128 and white control 128) exhibited necrosis at the end of the experiment. Corals maintained under blue light exhibited no necrosis or mortality, regardless of irradiance.

Zooxanthellae Density

Zooxanthellae density at the end of week 6 ranged from $0.97 \pm 0.62 \times 10^6$ to $2.65 \pm 0.95 \times 10^6$ cells per gram coral (Fig. 3) and was significantly affected by light spectrum (Table 1). In addition, an interactive trend of spectrum and irradiance was detected (Table 1), with the effect of spectrum on zooxanthellae density observed for corals grown under an irradiance level of $256 \mu\text{mol m}^{-2} \text{s}^{-1}$ ($F_{2,16} = 6.952$, $P = 0.007$). Specifically, corals grown under a blue irradiance of $256 \mu\text{mol m}^{-2} \text{s}^{-1}$ (blue 256) showed a significantly higher zooxanthellae density compared to those cultured under red light at the same irradiance (red 256, $P = 0.006$). There was also a positive trend for the effect of blue irradiance on zooxanthellae density, with a potentially higher zooxanthellae density under blue light at an irradiance of $256 \mu\text{mol m}^{-2} \text{s}^{-1}$ (blue 256) compared to $128 \mu\text{mol m}^{-2} \text{s}^{-1}$ (blue 128, $P = 0.122$). For red light, the opposite trend was observed, i.e. a potentially lower zooxanthellae density for corals exposed to red light at an irradiance of $256 \mu\text{mol m}^{-2} \text{s}^{-1}$ (red 256) as compared to $128 \mu\text{mol m}^{-2} \text{s}^{-1}$ (red 128, $P = 0.072$).

Maximum Quantum Yield

Overall, all corals showed a decreasing trend in maximum quantum yield (MQY) during the experiment (Fig. 4). After week 6, MQY was significantly lower compared to after week 1, irrespective of spectrum and irradiance ($F_{1,33} = 380.073$, $P = 0.000$). Significant differences in MQY between treatments were found from week 3 onwards. A significant interactive effect of spectrum and irradiance was found for MQY after week 3 (Table 1) as revealed by higher MQY for corals grown under red 256 compared to blue red 256 ($P = 0.010$), and higher for corals grown under blue red 128 compared to blue red 256 ($P = 0.020$). After week 5, a significant effect of irradiance was detected (Table 1), with corals grown under blue 128 displaying a higher MQY compared to those cultured under blue 256 ($P = 0.035$). The same trend between irradiance levels was observed for the blue red treatments ($P = 0.021$). After week 6, a significant effect of irradiance was detected (Table 1), with corals cultured under blue 128 exhibiting a higher MQY than those exposed to blue 256 ($P = 0.009$).

Normalised Difference Vegetation Index (NDVI)

Similar to MQY, most corals exhibited a decreasing NDVI trend during the experiment, with corals exposed to blue 128 showing the highest value at the end of the experiment (Fig. 5). A significant interactive effect of spectrum and irradiance on NDVI was found at week 1 (Table 1), with corals grown under red 256 exhibiting a higher NDVI compared to those from the blue red 256 ($P = 0.040$) and red 128 treatments ($P = 0.004$). After week 2, a main effect of spectrum was found (Table 1), with corals grown under blue 256 and red 256 showing a higher NDVI compared to corals maintained under blue red 256 ($P = 0.021$ and $P = 0.029$, respectively). After week 3, a main effect of irradiance was detected (Table 1), with a higher NDVI for corals cultured under blue 128 compared to those kept under blue 256 ($P = 0.004$). After week 4, significant main and interactive effects of spectrum and irradiance were found (Table 1). Specifically, corals grown under blue 128 showed a higher NDVI compared to those cultured under blue 256, red 128, and blue red 128 ($P = 0.000$, $P = 0.000$ and $P = 0.013$, respectively). In addition, corals grown under red 256 and blue red 128 had a higher NDVI values than those kept under blue red 256 ($P = 0.001$ and $P = 0.018$, respectively). After week 5, a significant effect of spectrum was detected (Table 1), with corals cultured under blue 128 exhibiting a higher NDVI than those grown under blue 256 ($P = 0.002$), red 128 ($P = 0.000$), and blue

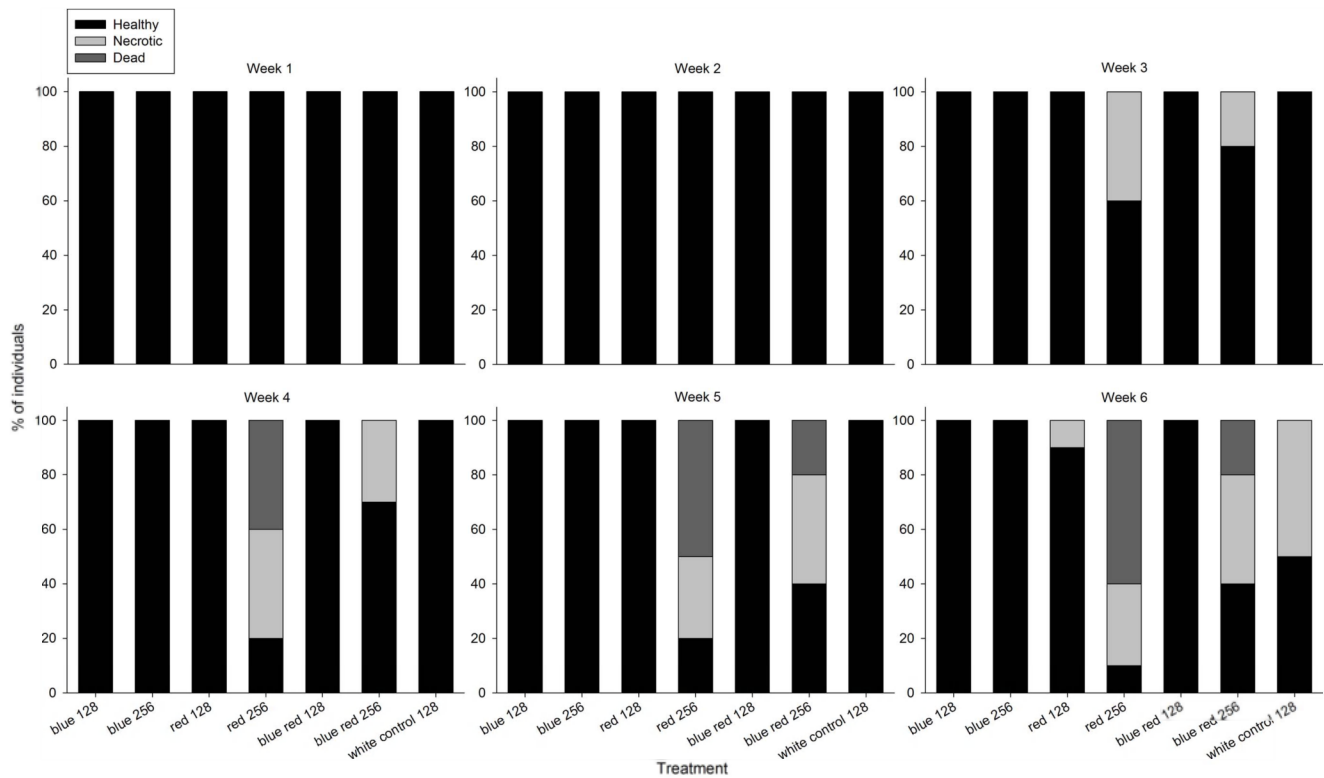


Figure 2. Coral health and survival under various experimental conditions (blue, red, 50/50% blue red and white light at an irradiance of $128/256 \mu\text{mol m}^{-2} \text{s}^{-1}$) over a time course of 6 weeks ($N=10$).

doi:10.1371/journal.pone.0092781.g002

red 128 ($P=0.004$). After week 6, main and interactive effects of spectrum were found (Table 1), with a higher NDVI for corals maintained under blue 128 compared to blue 256 ($P=0.000$), red

128 ($P=0.000$) and blue red 128 ($P=0.000$), and a higher NDVI for corals kept under blue 256 as compared to those grown under blue red 256 ($P=0.000$).

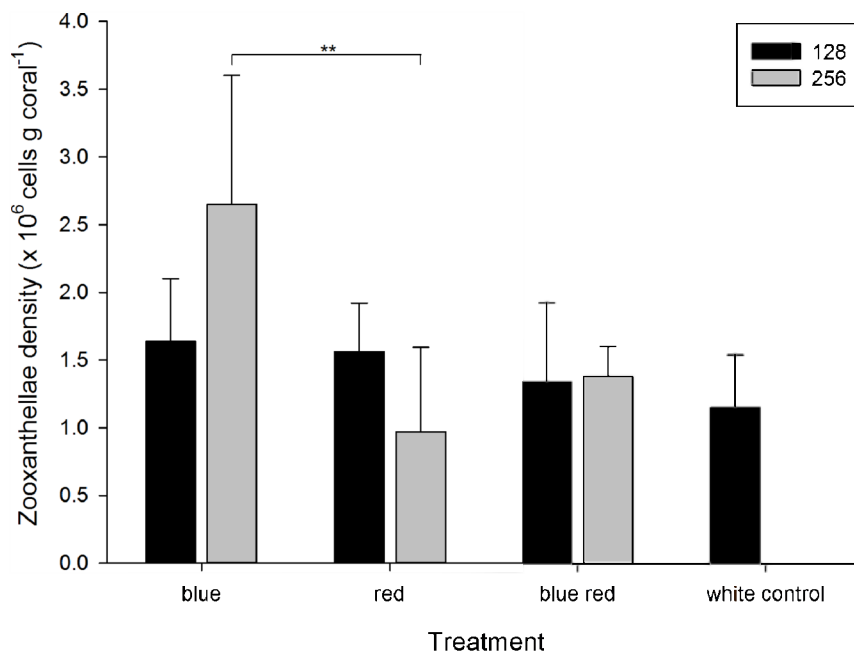


Figure 3. Zooxanthellae density under various experimental conditions (blue, red, 50/50% blue red and white light at an irradiance of $128/256 \mu\text{mol m}^{-2} \text{s}^{-1}$) after week 6. Values are means + s.d. ($N=4$). **Indicates significant difference ($P<0.010$).

doi:10.1371/journal.pone.0092781.g003

Table 1. Two-way factorial ANOVA, demonstrating main and interactive effects of spectrum and irradiance on zooxanthellae density, maximum quantum yield (MQY) and NDVI ($N = 1-10$).

Factor	Variable	F	df	error	P
Zooxanthellae density					
Spectrum		4.133	2	16	0.036*
Irradiance		0.024	1	16	0.878
Spectrum * Irradiance		3.222	2	16	0.067
MQY week 1					
Spectrum		0.516	2	54	0.600
Irradiance		0.584	1	54	0.448
Spectrum * Irradiance		2.704	2	54	0.076
MQY week 2					
Spectrum		1.357	2	54	0.266
Irradiance		0.203	1	54	0.654
Spectrum * Irradiance		2.000	2	54	0.145
MQY week 3					
Spectrum		1.363	2	54	0.265
Irradiance		0.497	1	54	0.484
Spectrum * Irradiance		4.462	2	54	0.016*
MQY week 4					
Spectrum		0.063	2	43	0.939
Irradiance		2.670	1	43	0.110
Spectrum * Irradiance		0.120	2	43	0.887
MQY week 5					
Spectrum		0.364	2	40	0.697
Irradiance		4.670	1	40	0.037*
Spectrum * Irradiance		1.212	2	40	0.308
MQY week 6					
Spectrum		1.467	2	33	0.245
Irradiance		6.090	1	33	0.019*
Spectrum * Irradiance		0.109	2	33	0.897
NDVI week 1					
Spectrum		0.026	2	54	0.975
Irradiance		0.683	1	54	0.412
Spectrum * Irradiance		5.814	2	54	0.005*
NDVI week 2					
Spectrum		4.585	2	54	0.014*
Irradiance		0.330	1	54	0.568
Spectrum * Irradiance		1.423	2	54	0.250
NDVI week 3					
Spectrum		1.775	2	54	0.179
Irradiance		7.789	1	54	0.007*
Spectrum * Irradiance		2.229	2	54	0.117
NDVI week 4					
Spectrum		5.458	2	43	0.008*
Irradiance		8.799	1	43	0.005*
Spectrum * Irradiance		7.296	2	43	0.002*
NDVI week 5					
Spectrum		3.495	2	38	0.040*

Table 1. Cont.

Factor	Variable	F	df	error	P
Irradiance		0.368	1	38	0.548
Spectrum * Irradiance		2.831	2	38	0.071
NDVI week 6					
Spectrum		38.359	2	33	0.000*
Irradiance		0.702	1	33	0.408
Spectrum * Irradiance		4.588	2	33	0.017*

*Indicates significant effect ($P < 0.050$).

doi:10.1371/journal.pone.0092781.t001

Reflectance

Coral reflectance changed during the experimental period (Fig. 6). After week 2 and beyond, corals grown under all treatments exhibited small, but distinct reflectance peaks at 545 and 611 nm. These peaks reached their maximum after week 2 for red 128, week 4 for the blue treatments and week 5 for the red and blue red 256 treatments. In addition, all corals clearly showed reflection minima at wavelengths below 500 nm and at 670 nm. Moreover, after week 6, corals exposed to blue red 256 reflected more light in the 480–750 nm range, with the most pronounced changes in the green/yellow/orange/red part of the light spectrum (540–650 nm). Finally, the reflectance amplitude between the minimum at 670 nm and the maximum at 750 nm decreased over time for all treatments.

Colouration

Corals were photographed at the end of week 6 to assess visible changes in their colouration. Corals grown under white 128, red 128 and blue red 256 showed increased pigmentation of polyp tentacles (Fig. 7). In addition, corals cultured under blue red 256 displayed a yellow/orange hue of the coenenchyme. This last feature was consistent with the reflection pattern of these corals after week 6 (Fig. 6), with a pronounced reflection increase in the green to red part of the light spectrum (550–650 nm). Despite the presence of necrotic and dead corals (Fig. 2), and low MQY values (Fig. 4) at the end of the experimental period, remaining coral tissue appeared healthy, with no signs of bleaching.

Discussion

This study revealed distinct effects of light spectrum and irradiance on the health/survival, symbiont density, photophysiology and colouration of the scleractinian coral *Stylophora pistillata*. Most notably, red light seemed to exert an inhibitory effect on zooxanthellae density and NDVI, a proxy for chlorophyll *a* content.

Coral health and survival were markedly affected by light spectrum, with highest survival rates (100%) for corals exposed to blue light, regardless of irradiance. The only treatments that resulted in necrosis and/or mortality were those that included red light, either solely or combined with blue light. However, no adverse effect was found at a red irradiance of $64 \mu\text{mol m}^{-2} \text{s}^{-1}$ (blue red 128; Fig. 2), which suggests that red light may promote necrosis and mortality of *S. pistillata* at irradiance of $128 \mu\text{mol m}^{-2} \text{s}^{-1}$ and above (either due to additional blue or red light). Although shallow-growing corals are exposed to red light of similar intensity as used in this study [8], it is possible that the genotype used for this experiment was collected at a depth where red light is nearly or completely absent ($<10 \text{ m}$) [8], rendering this coral sensitive to

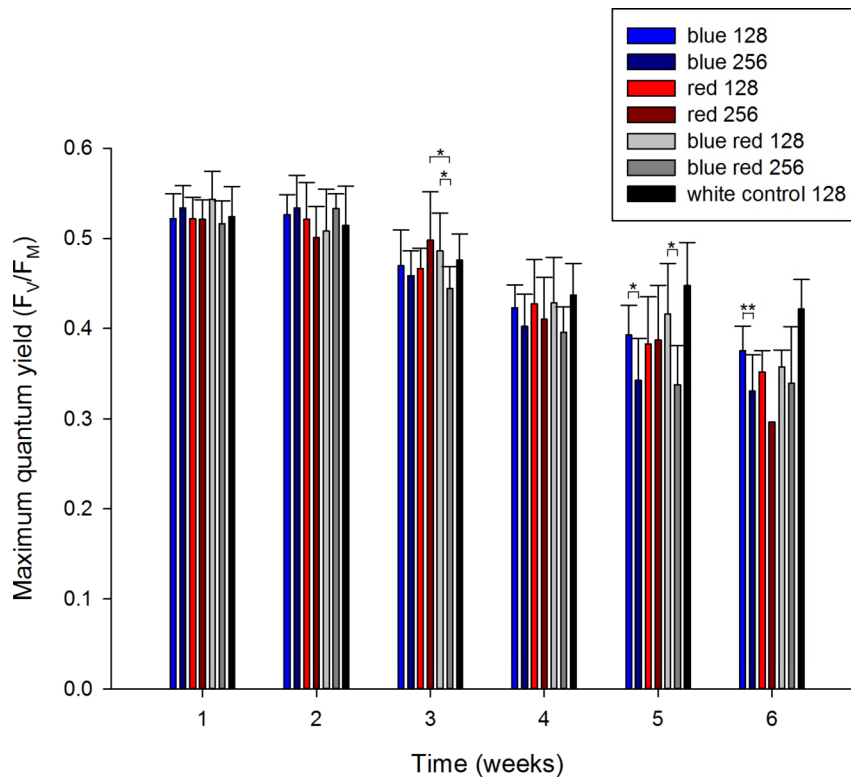


Figure 4. Maximum quantum yield of corals under various experimental conditions (blue, red, 50/50% blue red and white light at an irradiance of $128/256 \mu\text{mol m}^{-2} \text{s}^{-1}$) over a time course of 6 weeks. Values are means + s.d. ($N = 1-10$). *Indicates significant difference ($P < 0.050$), **($P < 0.010$).

doi:10.1371/journal.pone.0092781.g004

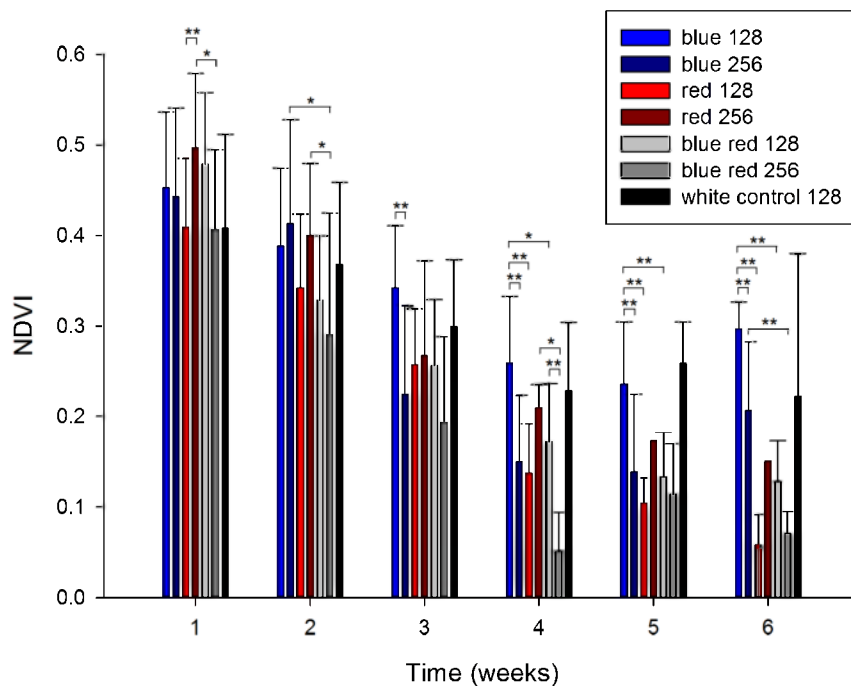


Figure 5. Normalised Difference Vegetation Index (NDVI) of corals under various experimental conditions (blue, red, 50/50% blue red and white light at an irradiance of $128/256 \mu\text{mol m}^{-2} \text{s}^{-1}$) over a time course of 6 weeks. Values are means + s.d. ($N = 1-10$). *Indicates significant difference ($P < 0.050$), **($P < 0.010$).

doi:10.1371/journal.pone.0092781.g005

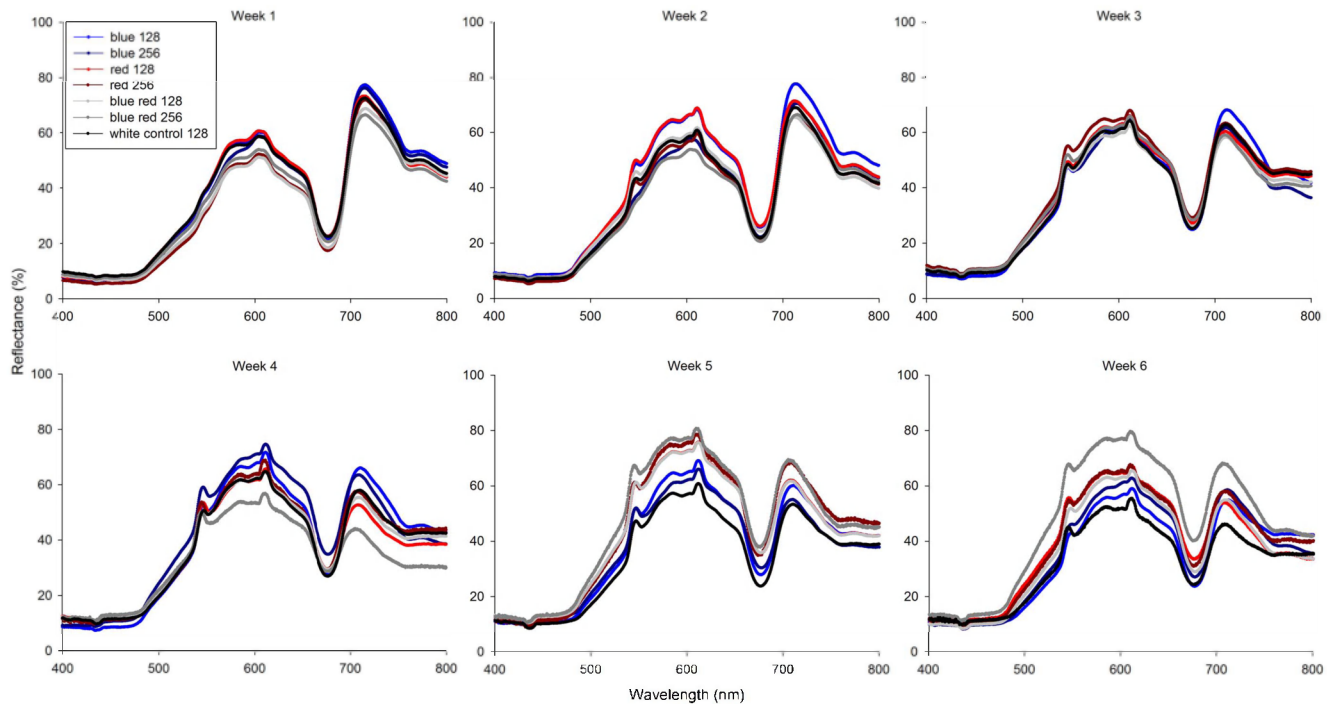


Figure 6. Coral reflectance under various experimental conditions (blue, red, 50/50% blue red and white light at an irradiance of 128/256 $\mu\text{mol m}^{-2} \text{s}^{-1}$) over a time course of 6 weeks. Values are means ($N=1-10$).
doi:10.1371/journal.pone.0092781.g006

excess red light. A caveat that has to be considered here is the necrosis of corals grown under the white light, which started during week 6. As this light spectrum is known to be suitable for aquaculture of this particular genotype [4,17], this suggests that other factors than light may have caused necrosis and mortality at the end of the experiment. A possible candidate is zinc, a co-factor of many enzymes with important roles in metabolism, and known to affect photosynthetic efficiency of *S. pistillata* [23]. More specifically, the zinc concentration in the experimental system was $79.7 \mu\text{g L}^{-1}$, a concentration known to be in the toxic range

for some coral species [24]. It is thus notable that narrow-bandwidth blue light seems favourable in a high-zinc environment, although it is unclear why. It is possible that blue light protects against zinc-induced reactive oxygen species [25,26,27] by enhancing the production of fluorescent proteins [7], pigments that possess antioxidant activity [12,28] (also see below on reflection).

Light spectrum also affected zooxanthellae density, which was significantly higher under blue light compared to red light at an irradiance of $256 \mu\text{mol m}^{-2} \text{s}^{-1}$. In addition, a positive, dose-dependent trend of blue light on zooxanthellae density was visible, as higher blue irradiance seemed to result in a higher zooxanthellae density. This contrasts with typical reports of increased zooxanthellae density at lower irradiance [22,29,30], which is observed in nature with increasing depth, where blue light is proportionally higher. Although such changes in zooxanthellae densities are usually associated with decreased irradiance, our results suggest that the increased ratio of blue to red light may also be an important regulator of zooxanthellae populations *in hospite*. As this study shows opposite trends of blue and red light, it is likely that both spectrum ranges play an active role in regulating zooxanthellae density, with blue light being stimulatory, and red light inhibitory. This theory is supported by a neutral effect on zooxanthellae density with a combined increase in blue and red light (Fig. 3), possibly because blue and red light compensated for one another's effect. Although this proposed mechanism seems to contradict the study of Kinzie et al. [5], who showed that blue and white light have similar effects on *in hospite* zooxanthellae, the white light treatment they applied exhibited higher blue than red irradiance. It is also possible that our highest blue red treatment did not emit sufficient blue and red light ($128/128 \mu\text{mol m}^{-2} \text{s}^{-1}$) for these colours to have a significant positive and negative effect, respectively.

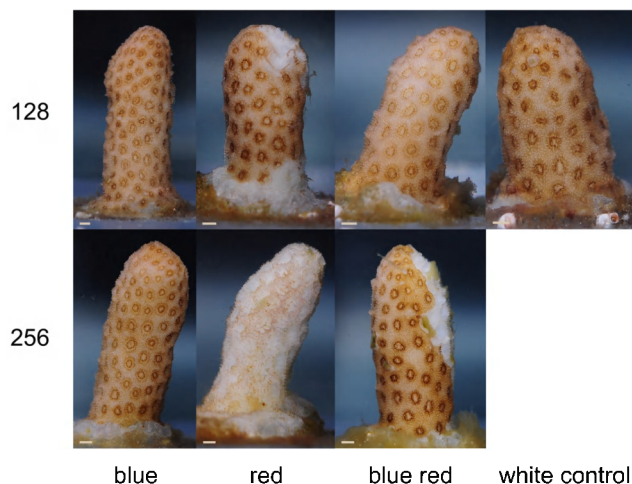


Figure 7. Close-up images of corals grown under various experimental conditions (blue, red, 50/50% blue red and white light at an irradiance of 128/256 $\mu\text{mol m}^{-2} \text{s}^{-1}$) after week 6. Scale bars: 1 mm.
doi:10.1371/journal.pone.0092781.g007

During the experimental period, all corals exhibited a decreasing trend in MQY. Although this may be indicative of stress, e.g. photoinhibition of photosystem II [31] or elevated zinc levels in the experimental system (see above), corals maintained under blue and white light showed a less pronounced negative trend in MQY. In addition, corals cultured under blue light had a significantly higher MQY at the lower irradiance applied, which suggests that higher energy associated with blue light causes (more) damage to photosystem II, possibly through D1 protein degradation [31]. At the end of the experiment, corals exposed to red 256 exhibited a MQY of 0.3 and were starting to bleach, which may have resulted in the necrosis that ensued.

Similarly to MQY, all corals showed a decreasing trend in NDVI. Although this may also be indicative of zooxanthellae expulsion associated with stress (see above), corals maintained under blue and white light showed a less pronounced NDVI decrease, especially at lower blue irradiance. This suggests that narrow-bandwidth blue and white light (with a high blue:red ratio of ~3; Fig. 1) indeed favour chlorophyll *a* production over red light, in agreement with the findings of Kinzie et al. [5]. The question is whether differences in chlorophyll *a* synthesis are caused by an enhancement by blue light, a repression by red light, or both. The data suggest that red light actively represses chlorophyll *a* synthesis, with a dominance over blue light, as all corals exposed to a significant amount of red light (red 128/256 and blue red 128/256) exhibited low NDVI values. As zooxanthellae densities between all treatments were similar (apart from blue 256 and red 256), red light may repress chlorophyll *a* synthesis per zooxanthella in *S. pistillata*.

All corals used in this experiment displayed distinct reflectance peaks at 545 and 611 nm from week 2 onwards. This may be due to increased production of green and red fluorescent proteins, respectively [7,32,33,34], which may be related to protection against zinc-induced oxygen radicals [12,25,26,27,28]. The reflection minima observed at 440 and 670 nm are probably due to the presence of chlorophyll *a*, which absorbs light at these wavelengths [35,36].

Next to changes in reflection patterns over time, corals grown under red 128 and blue red 256 exhibited pronounced brown, pigmented tentacles, possibly associated with photopigments from zooxanthellae. This may be associated with a redistribution of zooxanthellae over time as these corals neither showed increased zooxanthellae densities nor elevated NDVI compared to other groups. Concentrated symbionts within polyp tentacles may increase self-shading of zooxanthellae, and bestow a degree of protection upon the zooxanthellae and corals by reducing D1 protein damage of photosystem II [31]. After week 6, corals

cultured under blue red 256 displayed a yellow/orange hue of the coenenchyme, consistent with the reflection pattern in the green to red part of the spectrum (540–650 nm). It is unclear why this occurred, but it may reflect a higher capacity for fluorescence of UV radiation as yellow light [37], even though our experimental lights did not emit any UV. Although a bright, fluorescent colouration of captive-bred corals is important for their market value [17], our light treatments only resulted in moderate colour differences in *S. pistillata* (Figs. 6 and 7), in line with the results of [17]. This suggests that for aquaculture of this genotype, selecting the light regime resulting in an optimal ratio between growth and energy consumed can be done without having to compromise for colouration.

In conclusion, our findings suggest that red light actively represses symbiont density and NDVI, a proxy for chlorophyll *a* content, in the *ex situ* cultured coral *Stylophora pistillata*. The ecological implication is that red light may be an important sensory cue to detect high irradiance, *sensu* [5], negatively regulating zooxanthellae density and chlorophyll *a* synthesis to reduce photodamage and bleaching sensitivity. This theory is consistent with the amount of red light present at low depth (<10 m), which is similar to our highest red irradiance treatment [8,15,16]. The mechanisms behind the inhibitory effects of red light are possibly linked to red-sensitive phytochromes, which regulate many processes in plants including chlorophyll biosynthesis [38,39] and which have been identified in zooxanthellae [39]. In addition, blue light is beneficial to the health, survival, symbiont density and NDVI of *S. pistillata*. This important role of blue light for the wellbeing of the coral holobiont may be based on blue-sensitive cryptochromes, which have been implicated in the regulation of circadian rhythm and sexual reproduction in corals [3,40,41,42], and the cell cycle of dinoflagellates [11,43]. Finally, our findings may benefit the sustainable aquaculture of this species, with narrow-bandwidth blue light sources seeming most suitable for this particular genotype.

Acknowledgments

We would like to thank the staff of Carus experimental facility at Wageningen UR for technical support, and two anonymous reviewers whose comments allowed us to improve an earlier draft of the manuscript.

Author Contributions

Conceived and designed the experiments: TW AvM LV CM RO. Performed the experiments: TW AvM CIFS. Analyzed the data: TW AvM CIFS MCL RO. Contributed reagents/materials/analysis tools: TW LV CM RO. Wrote the paper: TW AvM CIFS MCL RO.

References

- Muscantine L, McCloskey LR, Marian RE (1981) Estimating the daily contribution of carbon from zooxanthellae to coral animal respiration. *Limnol Oceanogr* 26:601–611.
- Davies PS (1984) The role of zooxanthellae in the nutritional energy requirements of *Pocillopora eydouxi*. *Coral Reefs* 2:181–186.
- Levy O, Appelbaum L, Leggat W, Goshliff Y, Hayward DC, et al. (2007) Light-responsive cryptochromes from a simple multicellular animal, the coral *Acropora millepora*. *Science* 318:467–70.
- Osinga R, Schutter M, Griffioen B, Wijffels RH, Verreth JAJ, et al. (2011) The biology and economics of coral growth. *Mar Biotechnol* 13:658–671.
- Kinzie III RA, Jokiel PL, York R (1984) Effects of light of altered spectral composition on coral zooxanthellae associations and on zooxanthellae *in vitro*. *Mar Biol* 78:239–248.
- Kinzie III RA, Hunter T (1987) Effect of light quality on photosynthesis of the reef coral *Montipora verrucosa*. *Mar Biol* 94:95–109.
- D'Angelo C, Denzel A, Vogt A, Matz MV, Oswald F, et al. (2008) Blue light regulation of host pigment in reef-building corals. *Mar Ecol Prog Ser* 364:97–106.
- Mass T, Kline DI, Roopin M, Veal CJ, Cohen S, et al. (2010) The spectral quality of light is a key driver of photosynthesis and photoadaptation in *Stylophora pistillata* colonies from different depths in the Red Sea. *J Exp Biol* 213:4084–4091.
- Iglesias-Prieto R, Trench RK (1997) Acclimation and adaptation to irradiance in symbiotic dinoflagellates. II. Response of chlorophyll-protein complexes to different photon-flux densities. *Mar Biol* 130:23–33.
- Iglesias-Prieto R, Beltrán VH, LaJeunesse TC, Reyes-Bonilla H, Thomé PE (2004) Different algal symbionts explain the vertical distribution of dominant reef corals in the eastern Pacific. *Proc R Soc Lond B* 271:1757–1763.
- Wang L-H, Liu Y-H, Ju Y-M, Hsiao Y-Y, Fang L-S, et al. (2008) Cell cycle propagation is driven by light-dark stimulation in a cultured symbiotic dinoflagellate isolated from corals. *Coral Reefs* 27:823–835.
- Bou-Abdallah F, Chasteen ND, Lesser MP (2006) Quenching of superoxide radicals by green fluorescent protein. *Biochim Biophys Acta* 1760:1690–1695.
- Gilmore AM, Larkum AWD, Safih A, Itoh S, Shibata Y, et al. (2003) Simultaneous time resolution of the emission spectra of fluorescent proteins and zooxanthellae chlorophyll in reef-building corals. *Photochem Photobiol* 77:515–523.

14. Salih A, Larkum A, Cox G, Kuhl M, Hoegh-Guldberg O (2000) Fluorescent pigments in corals are photoprotective. *Nature* 408:850–853.
15. Huang X-D, Dixon DG, Greenberg BM (1995) Increased polycyclic aromatic hydrocarbon toxicity following their photomodification in natural sunlight: Impacts on the duckweed *Lemna gibba* L. G3. *Ecotoxicol Environ Saf* 32:194–200.
16. Demmig-Adams B, Adams WW (1996) Xanthophyll cycle and light stress in nature: uniform response to excess direct sunlight among higher plant species. *Planta* 198:460–470.
17. Rocha RJM, Pimentel T, Serôdio J, Rosa R, Calado R (2013) Comparative performance of light emitting plasma (LEP) and light emitting diode (LED) in ex situ aquaculture of scleractinian corals. *Aquaculture* 402–403:38–45.
18. Leal MC, Calado R, Sheridan C, Alimonti A, Osinga R (2013) Coral aquaculture to support drug discovery. *Trends Biotechnol* 31:555–561.
19. Sheridan C, Kramarsky-Winter E, Sweet M, Kushmaro A, Leal MC (2013) Diseases in coral aquaculture: causes, implications and preventions. *Aquaculture* 396–399:124–135.
20. Schreiber U, Schliwa U, Bilger W (1986) Continuous recording of photochemical and nonphotochemical chlorophyll fluorescence quenching with a new type of modulation fluorometer. *Photosynth Res* 10:51–62.
21. Rouse J, Haas R, Schell J, Deering D (1973) Monitoring vegetation systems in the Great Plains with ERTS. ERTS-1 Symp, 3rd Washington, DC: NASA SP-351, Greenbelt, MD, pp 309–317.
22. Rocha RJM, Calado R, Cartaxana P, Furtado J, Serôdio J (2013) Photobiology and growth of leather coral *Sarcophyton* sp. *glaucum* fragments under low light in a recirculated system. *Aquaculture* 414–415:235–242.
23. Ferrier-Pagès C, Houlbrèque F, Wyse E, Richard C, Allemand D, et al. (2005) Bioaccumulation of zinc in the scleractinian coral *Stylophora pistillata*. *Coral Reefs* 24:636–645.
24. Reichelt-Brushett AJ, Harrison PL (2005) The effect of selected trace metals on the fertilization success of several scleractinian coral species. *Coral Reefs* 24:524–534.
25. Alia, Prasad KVSK, Paradha Saradhi P (1995) Effect of zinc on free radicals and proline in *Brassica* and *Cajanus*. *Phytochem* 39: 45–47.
26. Daniels WMU, Hendricks J, Salie R, van Rensburg SJ (2004) A mechanism for zinc toxicity in neuroblastoma cells. *Metabol Brain Dis* 19:79–88.
27. Prasad KVSK, Paradha Saradhi P, Sharmila P (1999) Concerted action of antioxidant enzymes and curtailed growth under zinc toxicity in *Brassica juncea*. *Environ Exp Bot* 42:1–10.
28. Palmer CV, Modi CK, Mydlarz LD (2009) Coral fluorescent proteins as antioxidants. *PLoS ONE* 4:e7298.
29. Rocha RJM, Serôdio J, Leal MC, Cartaxana P, Calado R (2013) Effect of light intensity on post-fragmentation photobiological performance of the soft coral *Simulana flexibilis*. *Aquaculture* 388–391:24–29.
30. Tidyanov EA, Tidyanova TV (2002) Reef-building corals – symbiotic autotrophic organisms: 2. Pathways and mechanisms of adaptation to light. *Russ J Mar Biol* 28:S19–S31.
31. Jones RJ, Hoegh-Guldberg O (2001) Diurnal changes in the photochemical efficiency of symbiotic dinoflagellates (Dinophyceae) of corals: photoprotection, photoinactivation and the relationship to coral bleaching. *Plant Cell Environ* 24:89–99.
32. Dove SG, Hoegh-Guldberg O, Ranganathan S (2001) Major colour patterns of reef-building corals are due to a family of GFP-like proteins. *Coral Reefs* 19:197–204.
33. Wilmann PG, Petersen J, Pettikiriarachchi A, Buckle AM, Smith SC, et al. (2005) The 2.1 Å Crystal structure of the far-red fluorescent protein HcRed: Inherent conformational flexibility of the chromophore. *J Mol Biol* 349:223–237.
34. Matz MV, Marshall NJ, Vorobyev M (2006) Symposium-in-Print: Green fluorescent protein and homologs – Are corals colorful? *Photochem Photobiol* 82:345–350.
35. Jeffrey SW, Haxo FT (1968) Photosynthetic pigments of symbiotic dinoflagellates (zooxanthellae) from corals and clams. *Biol Bull* 135:149–165.
36. Halldal P (1968) Photosynthetic capacities and photosynthetic action spectra of endozoic algae of the massive coral *Favia*. *Biol Bull* 134, 411–424.
37. Reef R, Kaniewska P, Hoegh-Guldberg O (2009) Coral skeletons defend against ultraviolet radiation. *PLoS ONE* 4:e7995.
38. Huq E, Al-Sady B, Hudson M, Kim C, Apel K, et al. (2004) PHYTOCHROME-INTERACTING FACTOR 1 is a critical bHLH regulator of chlorophyll biosynthesis. *Science* 305:1937–1941.
39. Liu X, Chen C-Y, Wang K-C, Luo M, Tai R, et al. (2013) PHYTOCHROME INTERACTING FACTOR3 associates with the histone deacetylase HDA15 in repression of chlorophyll biosynthesis and photosynthesis in etiolated *Arabidopsis* seedlings. *The Plant Cell* 25:1258–1273.
40. Sorek M, Levy O (2012) Influence of the quantity and quality of light on photosynthetic periodicity in coral endosymbiotic algae. *PLoS ONE* 7:e43264.
41. Hoadley KD, Szmant AM, Pyott SJ (2011) Circadian clock gene expression in the coral *Favia fragum* over diel and lunar reproductive cycles. *PLoS One* 6:e19755.
42. Shoguchi E, Tanaka M, Shinzato C, Kawashima T, Satoh N (2013) A genome-wide survey of photoreceptor and circadian genes in the coral, *Acropora digitifera*. *Gene* 515:426–431.
43. Brunelle SA, Hazard ES, Sotka EE, van Dolah FM (2007) Characterization of a dinoflagellate cryptochrome blue-light receptor with a possible role in circadian control of the cell cycle. *J Phycol* 43:509–518.