

Transnational mapping: Towards a maritime spatial typology

Holger Janßen¹ & Anne Hiller²

¹ Leibniz Institute for Baltic Sea Research (IOW)

² Die Küsten Union Deutschland (EUCC Germany)

Littoral 2012, 27th November 2012, Oostende, Belgium



ESP



N-SEAS
(ESaTDOR)

EUROPEAN UNION

Part-financed by the European Regional Development Fund
INVESTING IN YOUR FUTURE

- 
- A background image showing the silhouettes of four people and a dog walking along a wet beach at sunset. The water is shallow and reflects the bright orange and yellow light of the setting sun. The sky is a deep blue. The silhouettes are positioned on the right side of the frame, with their reflections clearly visible in the wet sand.
- **Wadden Sea World Nature Heritage**
 - **Trilateral Cooperation on the Protection of the Wadden Sea**
 - **Breeding and wintering area for up to 12 millions birds per annum**
 - **Supports more than 10 percent of 29 species**
 - **One of the last remaining natural, large-scale, intertidal ecosystems**

User: Trilateral stakeholder forum

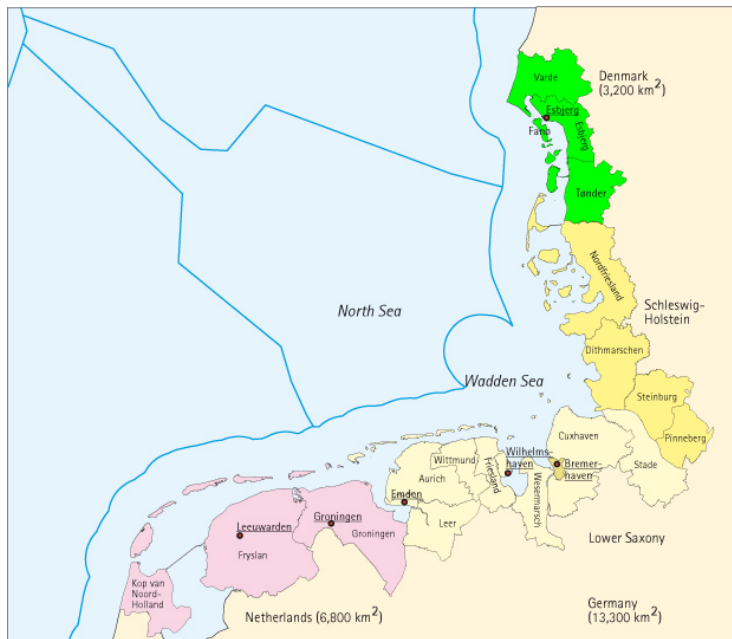


© WSF



WADDEN SEA FORUM
WADDEN SEA FORUM

WSF tasks & working groups



Goals

- Sustainable development of the region
- Cross-border cooperation
- Cross-sectoral cooperation
- Transnational concepts
- Joint recommendation towards policy makers



WGs

- ICZM & MSP
- Energy and industry
- Shipping and ports
- Fishery
- Agriculture
- Cultural identity



Need for spatial information on

- existing uses
- protection regimes
- spatial plans

both on land and on sea

The idea!

Open and transparent spatial information for the Wadden Sea Region

- Trilateral
- Crossing administrative borders (e.g. land - coastal waters - EEZ)
- Cross sectoral
- Easy to access and easy to use
- Maps and information from different sources shown in one common symbolisation
- Information on both existing and planned uses
- A tool helping stakeholders to identify pressures, processes and conflicts in the Wadden Sea Region
- A tool helping stakeholders to develop own cross-border solutions and to participate actively in decision making processes

- Identify data sources
- Data collection, editing and merging
- Development of operation of a stakeholder-coordinated tool

reliable data



Federal authorities & scientific institutes DE



State authorities & municipalities SH



State authorities & municipalities Nds.



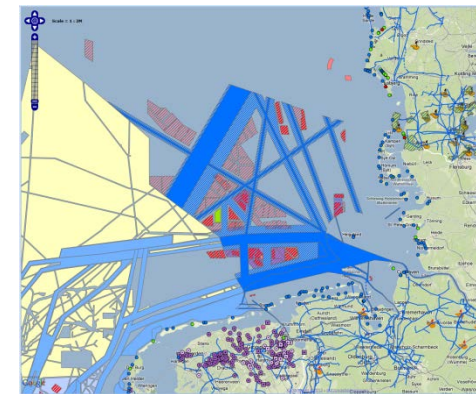
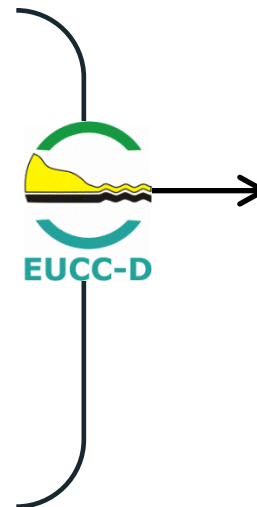
Authorities, municipalities & institutes NL



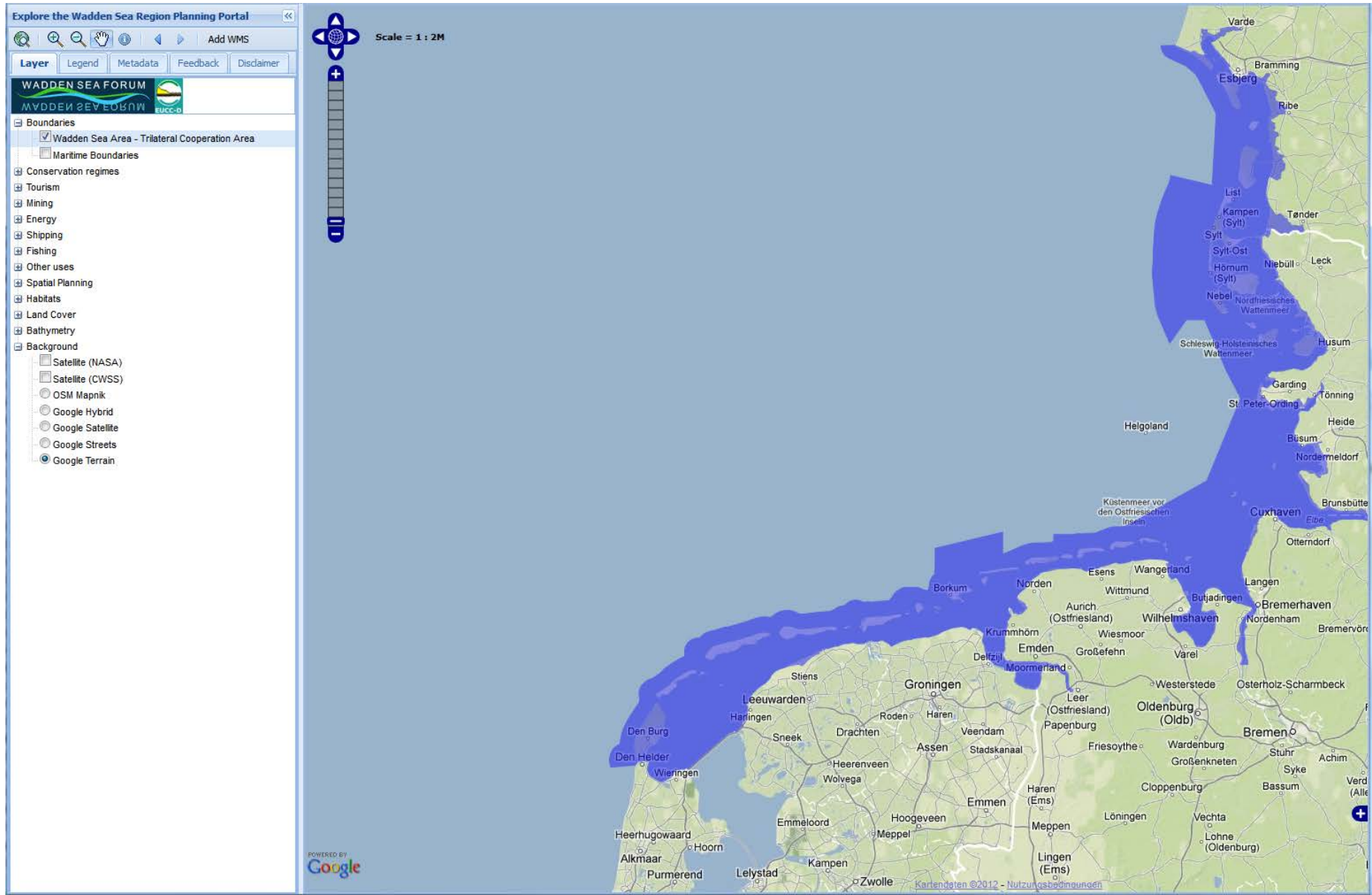
Authorities, municipalities & institutes DK



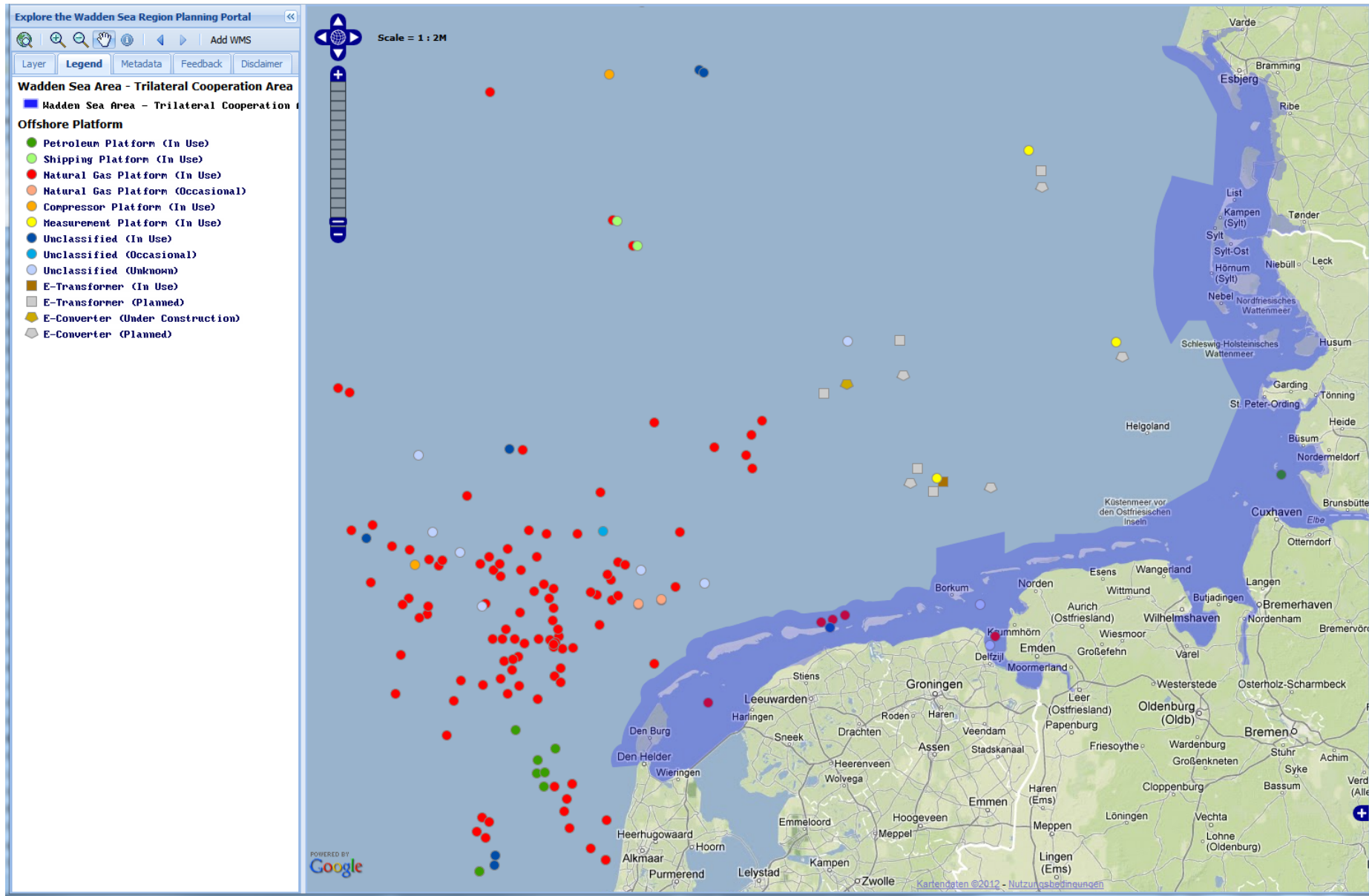
European agencies

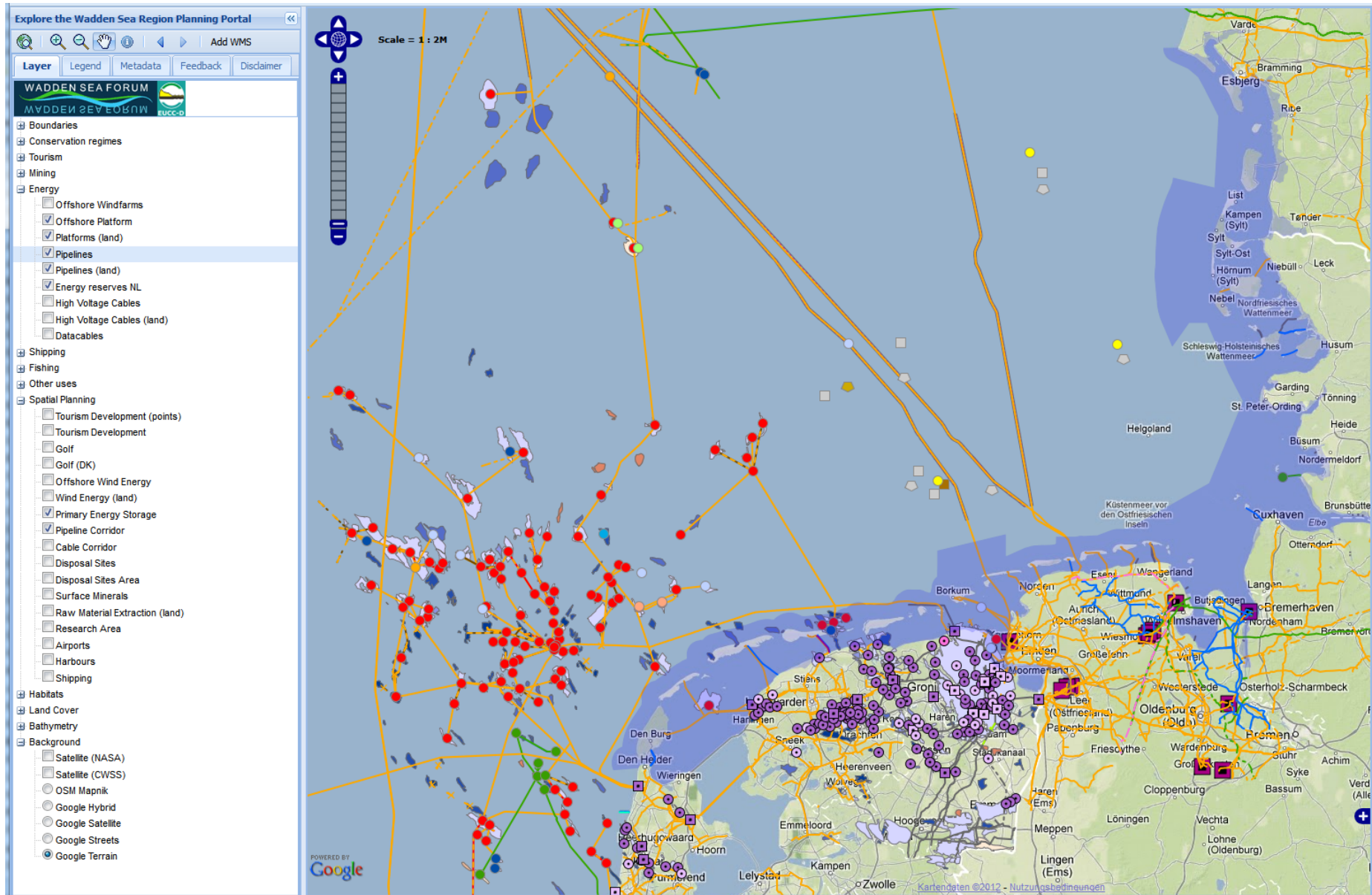


~ 60 data owners/holders

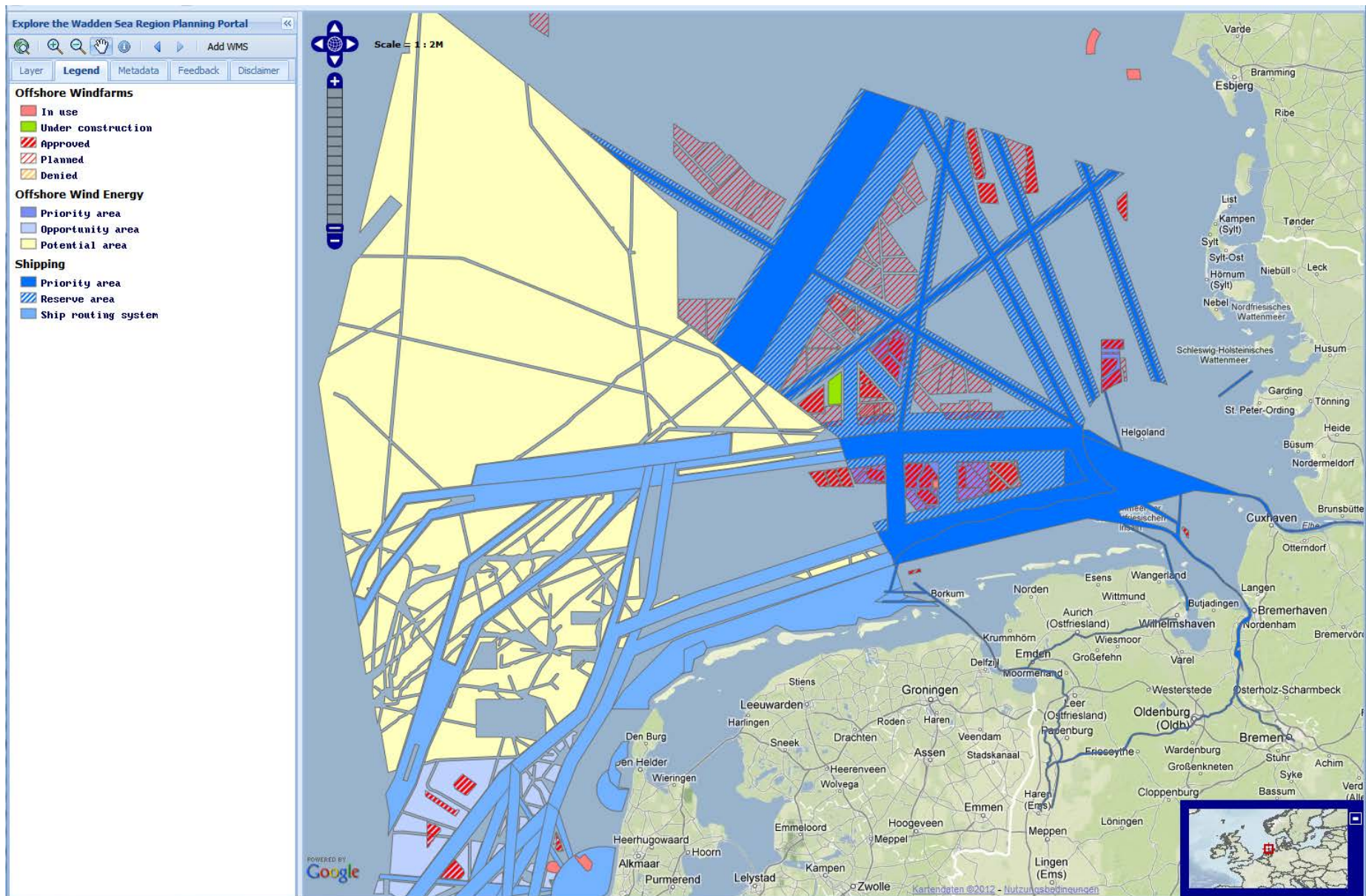


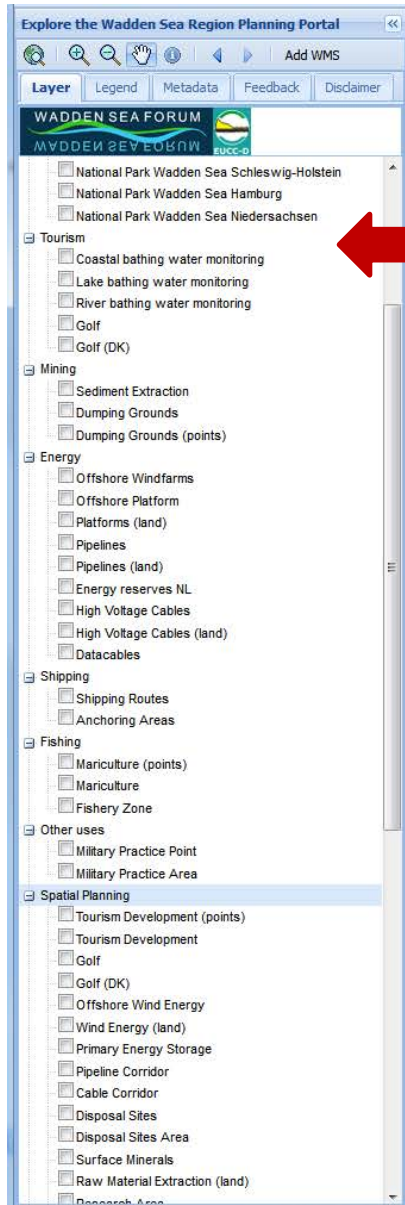
Natural gas exploitation





Cross-border MSP ?





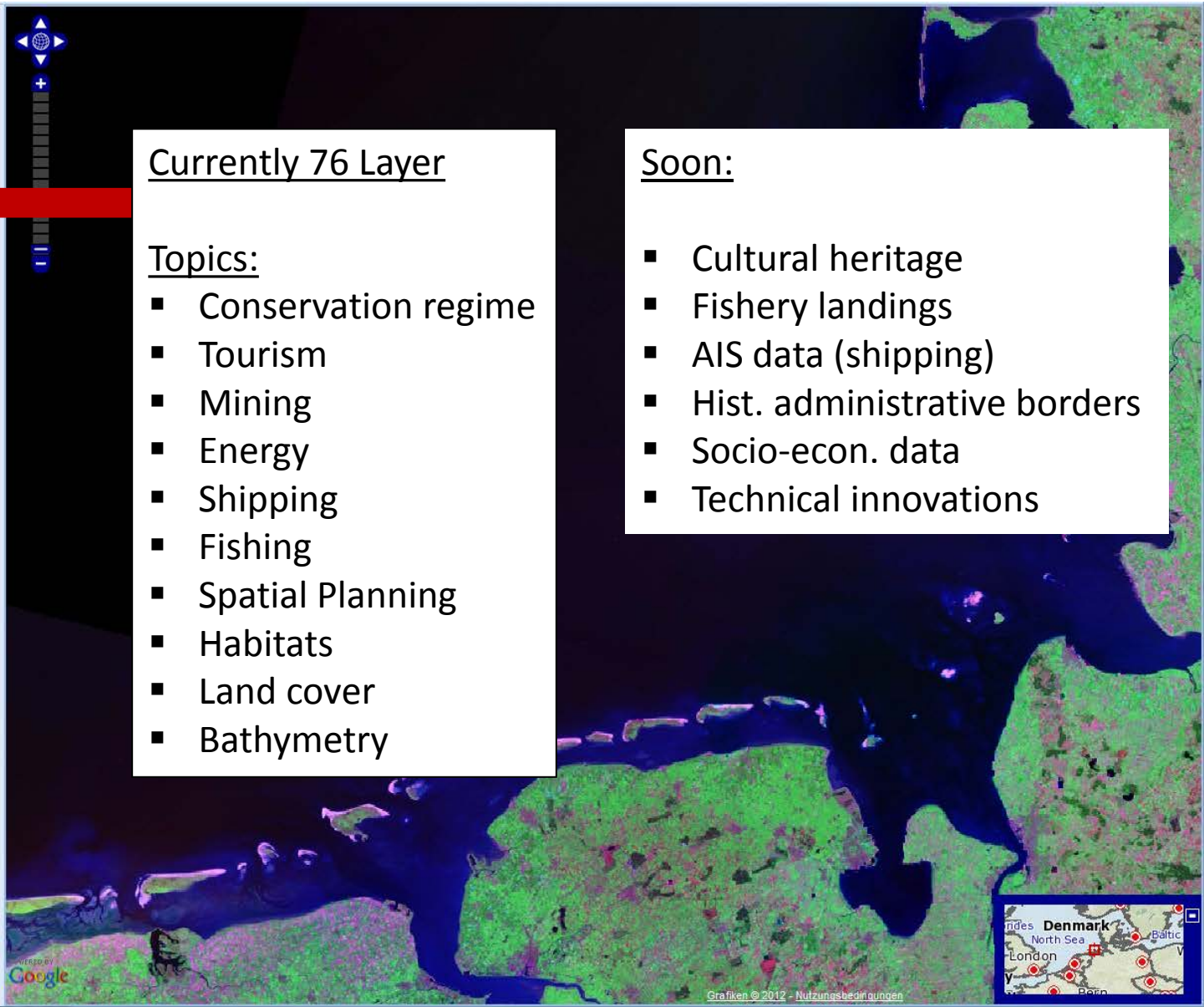
Currently 76 Layer

Topics:

- Conservation regime
- Tourism
- Mining
- Energy
- Shipping
- Fishing
- Spatial Planning
- Habitats
- Land cover
- Bathymetry

Soon:

- Cultural heritage
- Fishery landings
- AIS data (shipping)
- Hist. administrative borders
- Socio-econ. data
- Technical innovations



Towards a spatial typology

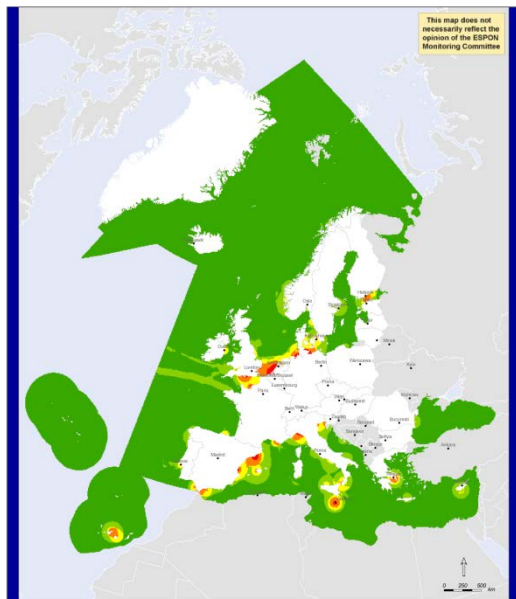
- Urban/rural, residential/industrial on land
- Different planning **goals and visions** linked to these categories
- **Legal regulations** differ from category to category
- Different **threshold values** (e.g. noise, pollutants, light) for each category

Approach

	European Core	High Density	Medium Density	Rural	Wildernes
Level of use	high	←			low
Footprint	high	←			low
Maritime connections	global	←			local
Land-sea interactions	high	←			low
Population density	high	←			low
Environmental risk	high	←			low
Environmental conditions	degraded				low degradation
Economic significance	high	←			low

Transport Flows

Transport Composite Map (Flows)

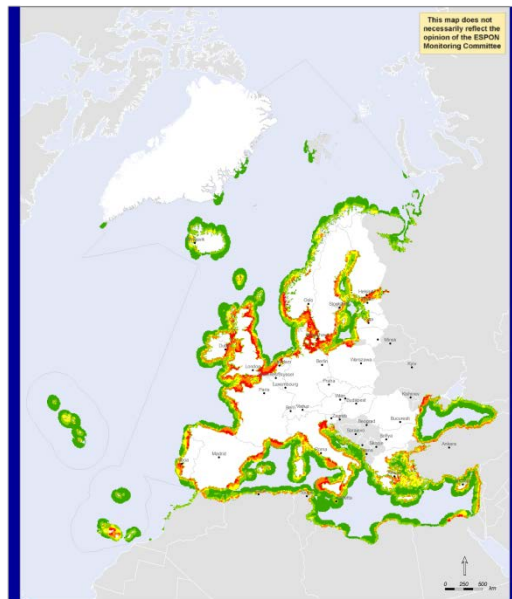


Transport Composite Map



Environment Composite

Environment composite map

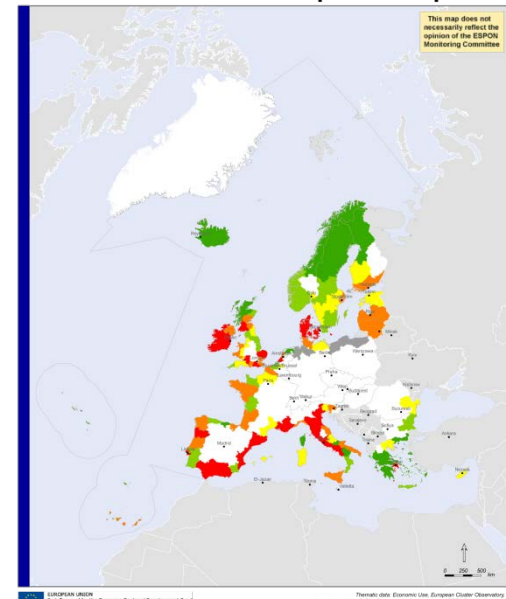


Environment Composite Map 1 (organic + invasive species + inorganic).



Maritime employment

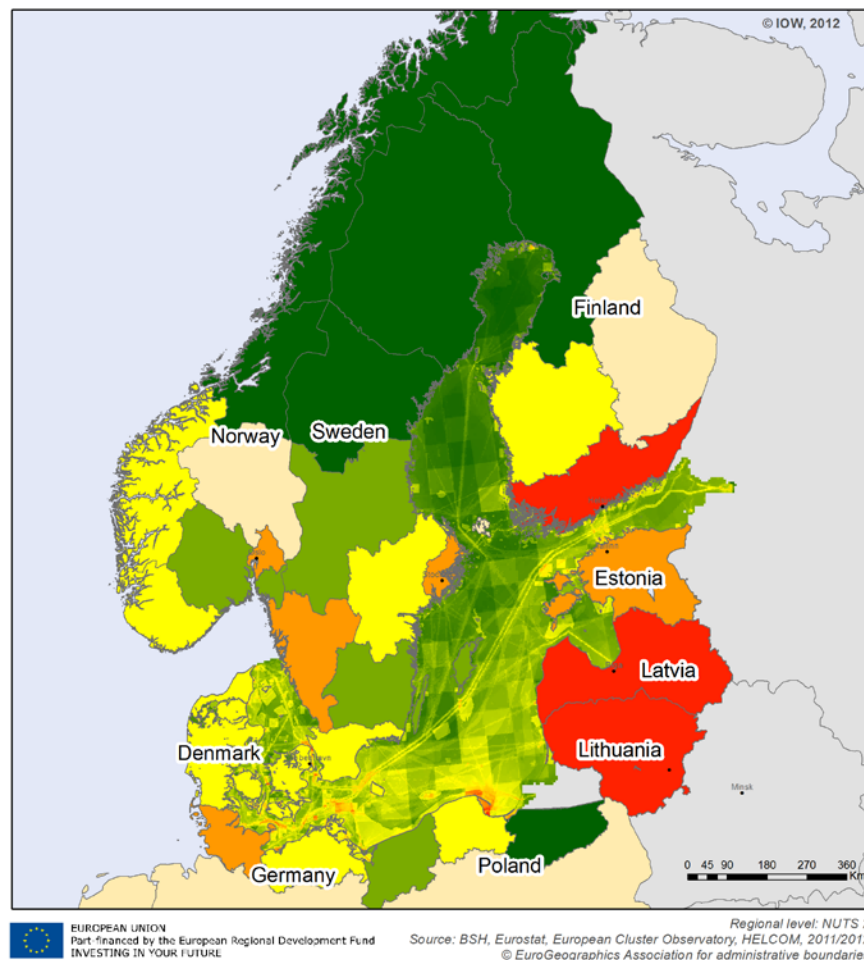
Economic use composite map



Economic Use Composite Map (total maritime cluster employees within each NUTS2 region).



Spatial intensities Background data for a Baltic typology

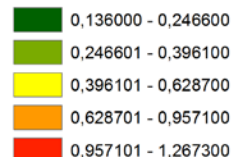


Sea intensity (IMSC + BSII)

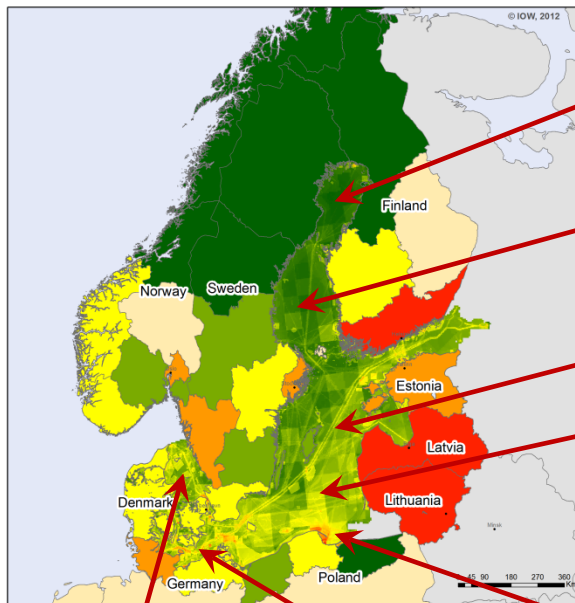


Land intensity

(share of maritime employment per NUTS-2 in total employment (BSR level) [%])

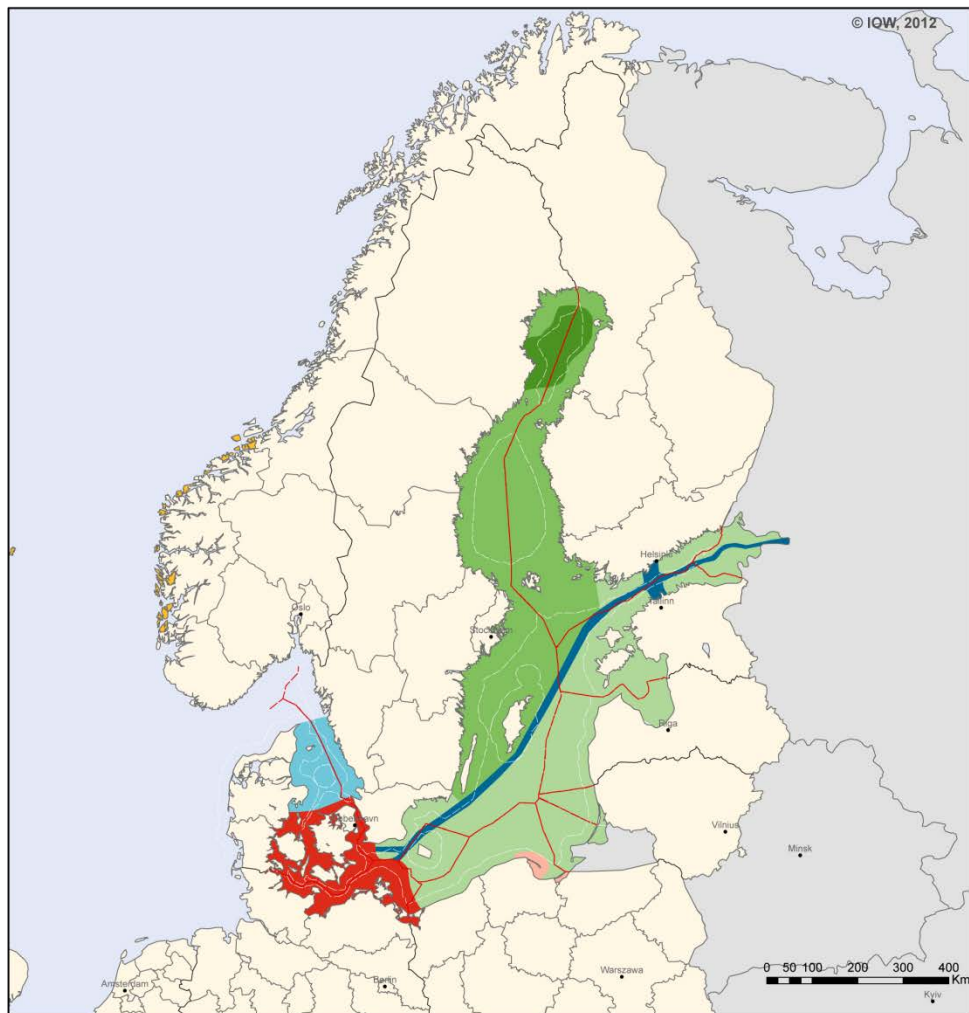


Quantitative & qualitative gradients





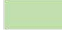




- Nearly untouched, very few environmental impacts, temporary uses only
- Rural (extensive): Main activities are food production (fisheries) and limited maritime traffic
- Motorway of the seas: shipping is dominant
- Rural (intensive): Main activities are food production (fisheries) and limited maritime traffic, both with increased intensity leading to increased environmental impacts
- Local hub: high intensity caused by all kinds of activities, limited to a small region and linked to local urban complexes
- Regional hub: high intensities and a strong node between land and sea (linking Scandinavia to central and western Europe)

- The gate: transition zone, Uses and environmental situation are characterised by the change from North Sea to Baltic

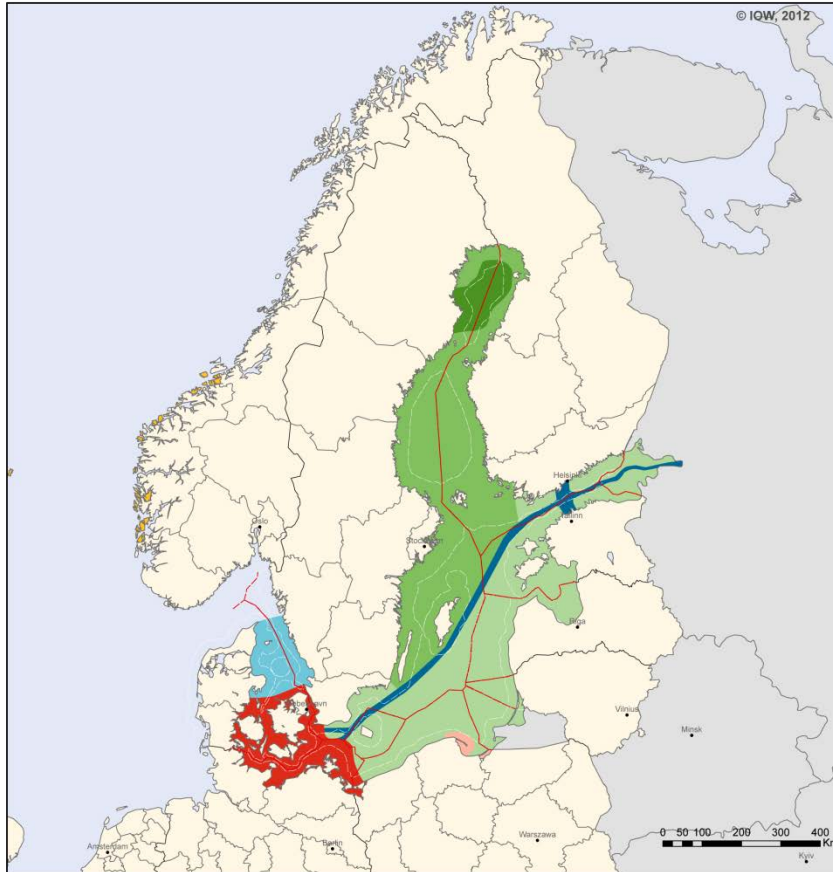



EUROPEAN UNION
 Part-financed by the European Regional Development Fund
 INVESTING IN YOUR FUTURE

Regional level: NUTS 2
 Source: BSH, Eurostat, European Cluster Observatory, HELCOM, 2011/2012
 © EuroGeographics Association for administrative boundaries

-  Wilderness
-  Extensive rural
-  Intensive rural
-  Transport corridor
-  Transition
-  Local hub
-  Regional hub

Conclusions



- **Fuzzy boundaries**
- **Transnational strategic MSP on seas/macro-regional level**
- **Common visions and goals for spatial classes**
- **Integrated spatial planning land/sea**

Holger Janßen

Leibniz Institute for Baltic Sea Research (IOW)

holger.janssen@io-warnemuende.de

Phone: +49 381 5197 469

Fax: +49 381 5197 211



ESP



N-SEAS
(ESaTDOR)

EUROPEAN UNION
Part-financed by the European
Regional Development Fund
INVESTING IN YOUR FUTURE