

Review Article

†Both authors contributed equally to this work.

**Cite this article:** Pérez-Ponce de León G, Hernández-Mena DI (2019). Testing the higher-level phylogenetic classification of Digenea (Platyhelminthes, Trematoda) based on nuclear rDNA sequences before entering the age of the ‘next-generation’ Tree of Life. *Journal of Helminthology* **93**, 260–276. <https://doi.org/10.1017/S0022149X19000191>

Received: 29 November 2018  
Accepted: 29 January 2019

**Keywords:**  
Taxonomy; Digenea; Trematoda; rDNA; NGS; phylogeny

**Author for correspondence:**  
G. Pérez Ponce de León,  
E-mail: [ppdleon@ib.unam.mx](mailto:ppdleon@ib.unam.mx)

# Testing the higher-level phylogenetic classification of Digenea (Platyhelminthes, Trematoda) based on nuclear rDNA sequences before entering the age of the ‘next-generation’ Tree of Life

G. Pérez-Ponce de León<sup>1,†</sup> and D.I. Hernández-Mena<sup>1,2,†</sup>

<sup>1</sup>Departamento de Zoología, Instituto de Biología, Universidad Nacional Autónoma de México, Avenida Universidad 3000, Ciudad Universitaria, C.P. 04510, México, D.F., Mexico and <sup>2</sup>Posgrado en Ciencias Biológicas, Universidad Nacional Autónoma de México, México, D.F., Mexico

## Abstract

Digenea Carus, 1863 represent a highly diverse group of parasitic platyhelminths that infect all major vertebrate groups as definitive hosts. Morphology is the cornerstone of digenean systematics, but molecular markers have been instrumental in searching for a stable classification system of the subclass and in establishing more accurate species limits. The first comprehensive molecular phylogenetic tree of Digenea published in 2003 used two nuclear rRNA genes (ssrDNA = 18S rDNA and lsrDNA = 28S rDNA) and was based on 163 taxa representing 77 nominal families, resulting in a widely accepted phylogenetic classification. The genetic library for the 28S rRNA gene has increased steadily over the last 15 years because this marker possesses a strong phylogenetic signal to resolve sister-group relationships among species and to infer phylogenetic relationships at higher levels of the taxonomic hierarchy. Here, we have updated the database of 18S and 28S rRNA genes until December 2017, we have added newly generated 28S rDNA sequences and we have reassessed phylogenetic relationships to test the current higher-level classification of digeneans (at the subordinal and subfamilial levels). The new dataset consisted of 1077 digenean taxa allocated to 106 nominal families for 28S and 419 taxa in 98 families for 18S. Overall, the results were consistent with previous higher-level classification schemes, and most superfamilies and suborders were recovered as monophyletic assemblages. With the advancement of next-generation sequencing (NGS) technologies, new phylogenetic hypotheses from complete mitochondrial genomes have been proposed, although their power to resolve deep levels of trees remains controversial. Since data from NGS methods are replacing other widely used markers for phylogenetic analyses, it is timely to reassess the phylogenetic relationships of digeneans with conventional nuclear rRNA genes, and to use the new analysis to test the performance of genomic information gathered from NGS, e.g. mitogenomes, to infer higher-level relationships of this group of parasitic platyhelminths.

## Introduction

Digenea Carus, 1863 and Aspidogastrea Faust and Tang, 1936 are two subclasses within the class Trematoda Rudolphi, 1808 (Cribb *et al.*, 2001a; Gibson *et al.*, 2002; Kostadinova & Pérez-del Olmo, 2014). Digeneans are the most diverse and numerically abundant group of parasitic metazoans, with approximately 18,000 nominal species included in the *c.* 2500–2700 nominal genera (see Cribb *et al.*, 2001a; Pérez-Ponce de León, 2001; Gibson *et al.*, 2002; Olson *et al.*, 2003; Kostadinova & Pérez-del Olmo, 2014; Littlewood *et al.*, 2015). Several attempts have been made since the mid-19th century to achieve a stable classification scheme based on useful criteria (see Gibson, 2002). Chronologically, the first attempts utilized the sucker arrangement. Later, other authors used cercarial morphology and life cycle patterns. More modern versions of the classification of the major groups of Digenea were proposed on cladistic analyses using morphological data from all life-history stages (Brooks *et al.*, 1985; Gibson, 1987; Pearson, 1992). Then, a novel combination of morphological and molecular data was proposed (Cribb *et al.*, 2001a). Nowadays, the most accepted classification of the major groups is based on molecular data derived from phylogenetic assessments of two ribosomal genes (Olson *et al.*, 2003; Littlewood *et al.*, 2015).

Gibson & Bray (1994) proposed a morphology-based classification of Digenea and subdivided the subclass into three orders, i.e. Strigeida, Echinostomida and Plagiorchiida; actually, these orders were used to organize three comprehensive volumes aimed at providing keys for the identification of the sexual adult trematodes (Gibson *et al.*, 2002; Jones *et al.*, 2005; Bray

*et al.* 2008). Gibson & Bray (1994) also predicted the increase in our understanding of the diversity, systematics and evolution of digeneans through molecular-based studies. Much progress has been gained in the last 25 years through continuous advancements of analytical and methodological tools to understand digenean evolution, and therefore, several phylogenetic classifications have been proposed. Brooks *et al.* (1985, 1989) performed the first cladistic phylogenetic analyses of the subclass Digenea using morphological traits from all life-history stages. These studies represented a framework upon which the proposed phylogenetic classification and the character evolution of Digenea were further tested. The use of molecular tools in studies of intra-family and inter-family relationships of digeneans started in the 1990s (see Cribb *et al.*, 2001a and references therein). However, it was not until 2001 that Cribb *et al.* (2001a) used morphological and life-cycle characteristics, in combination with sequencing data from the 18S rRNA gene of 75 species of digeneans and three aspidogastreaans as outgroups, to study the evolution of Digenea (also see Cribb *et al.* 2001b; 2003). The pioneer study by Cribb *et al.* (2001a) marked the starting point of what we currently know about the molecular phylogeny of Digenea. Olson *et al.* (2003) provided a comprehensive molecular phylogenetic tree of Digenea by using the complete small subunit of the ribosomal RNA gene (ssrDNA = 18S rDNA) and partial (D1–D3) large subunit ribosomal gene (lsrDNA = 28S rDNA) of 163 digenean taxa representing 77 nominal families and seven aspidogastreaans as outgroups; these nuclear genes were analysed independently and combined through parsimony and Bayesian inference (BI) methods. The analysis by Olson *et al.* (2003) proposed a molecular phylogeny-based classification scheme for the subclass Digenea, and it has been widely used as a framework upon which modern studies have tackled questions regarding the evolution of digeneans (e.g. Fraija-Fernández *et al.*, 2015).

The most recent molecular phylogenetic analysis of this group of parasitic platyhelminths was conducted by Littlewood *et al.* (2015); these authors studied the diversification patterns of trematodes in reference to molecular phylogenies and definitive vertebrate host usage. A database was built by these authors with all the available data in GenBank (up to January 2013) for the 18S and 28S rRNA genes. Phylogenetic analyses were undertaken considering information for discrete species (Littlewood *et al.*, 2015), including 202 and 556 sequences of 18S and 28S, respectively (Littlewood *et al.*, 2015). Diversity and diversification patterns and processes were then described by reference to the phylogenetic analysis, where terminals were condensed to depict superfamilies (see figs 16.1 and 16.3 in Littlewood *et al.*, 2015). Furthermore, the number of DNA sequences of nuclear and mitochondrial genes of digeneans has increased steadily in the last 15 years. Studies aimed at establishing more robust species limits and in detecting cryptic species increased the number of mitochondrial DNA sequences, particularly cytochrome *c* oxidase subunit 1 (*cox1*) (see Pérez-Ponce de León & Nadler, 2010); instead, studies of species diagnostics and phylogenetic assessments increased the taxon representation, at species, genus and family levels, for the 18S and 28S rRNA genes; still, these genes are the bedrock of digenean molecular systematics (see Lockyer *et al.*, 2003; Littlewood, 2008).

Even though molecular data from nuclear rRNA genes have consistently resolved the inter-relationships among platyhelminths (see Littlewood, 2008), the use of next-generation sequencing (NGS) methods in the last decade has increased our ability to readily sequence whole genomes leading to the possibility to

explore new areas in the study of biodiversity and evolution (Olson *et al.*, 2016). As a result, the complete mitochondrial genome (mitogenome) of some digenean species is now available, and it has been used for phylogenetic analyses based on the premise that the number of sequenced base pairs, gene order and genome arrangement may provide evidence of a shared ancestry (see Littlewood *et al.*, 2006). As mentioned by Blasco-Costa *et al.* (2016): ‘sequencing whole mitochondrial genomes is possibly the next step beyond traditional DNA barcoding’. In this context, phylogenies of mitogenomes of closely related species encompassing *c.* 14,000 bp may provide better resolution of inter-relationships among digeneans and higher nodal support for phylogenetic relationship inference. NGS technologies are undoubtedly revolutionizing current taxonomic practices (see Olson *et al.*, 2016); in the case of digeneans, discrepancies in the higher-level classification system have been raised. Still, the results of phylogenetic analyses using the very few mitogenomes available in GenBank are questionable, their power to resolve deep levels of the tree such as superfamilies and suborders remain controversial and, additionally, taxon representation is still incomplete to generate a robust classification system. Considering the recent advancements of molecular techniques, the current review is an attempt to analyse once again the higher-level classification of the subclass Digenea using a more comprehensive taxon sampling of digeneans through conventional Sanger sequencing methods of nuclear rRNA genes. Here, we updated the database of the 28S and 18S rRNA genes of digeneans; a dataset of 1077 taxa representing 518 genera and 106 families, and 419 taxa representing 296 genera and 98 families, respectively (up until December 2017) was built. The new datasets were used to explore the robustness of the phylogenetic signal of ribosomal genes in resolving higher-level phylogenetic inter-relationships within Digenea; we discussed potential inconsistencies with previous molecular phylogenetic assessments in terms of the classification of digeneans at the superfamily and suborder levels, and evaluated the stability of the classification in comparison with the still incipient system derived from complete mitochondrial genomes and their performance to infer the higher-level inter-relationships among digeneans.

### Gathering the data: sampling of sequences from GenBank

First, we analysed current trends in the use of molecular markers in the study of digenean taxonomy; we searched the GenBank database exhaustively for DNA sequences of species allocated in the subclass Digenea for different molecular markers for a period between January 1990 and December 2017. Only the most commonly used markers were considered for searching in the GenBank database, i.e. the large subunit of the ribosomal 28S rRNA gene (LSU); the small subunit of the ribosomal 18S rRNA gene (SSU); the internal transcribed spacers (ITS), including the ITS1, 5.8S and ITS2; the cytochrome *c* oxidase subunit I (*cox1*); and NADH1. The search strategy included seven combinations of terms to retrieve all the available information on trematode sequences:

- (1) 28S: ('trematoda' [Organism] AND ('28S' OR 'large subunit ribosomal') AND 'year' [PDAT]) NOT 'ITS' NOT 'Internal' NOT '5.8S' NOT '18S' NOT 'genome'.
- (2) 18S: ('trematoda' [Organism] AND ('18S' OR 'small subunit ribosomal') AND 'year' [PDAT]) NOT 'ITS' NOT 'Internal' NOT '5.8S' NOT '28S' NOT 'genome'.

- (3) Only ITS1: ('trematoda' [Organism] AND 'year' [PDAT] AND ('Internal transcribed spacer 1' OR 'ITS1')) NOT '28S' NOT 'Internal transcribed spacer 2' NOT 'Internal transcribed spacer II' NOT 'ITS2' NOT 'genome' NOT 'NADH' NOT 'cytochrome' NOT 'NDH'.
- (4) Only ITS2: ('trematoda' [Organism] AND 'year' [PDAT] AND ('Internal transcribed spacer 2' OR 'ITS2')) NOT '18S' NOT 'Internal transcribed spacer 1' NOT 'Internal transcribed spacer I' NOT 'ITS1' NOT 'genome' NOT 'NADH' NOT 'cytochrome' NOT 'NDH'.
- (5) ITS1-5.8S-ITS2: ('trematoda' [Organism] AND 'year' [PDAT] AND ('Internal transcribed spacer 1' OR 'Internal transcribed spacer I' OR 'ITS1') AND ('Internal transcribed spacer 2' OR 'Internal transcribed spacer II' OR 'ITS2') AND '5.8S') NOT 'genome' NOT 'NADH' NOT 'cytochrome' NOT 'NDH'.
- (6) *cox1*: ('trematoda' [Organism] AND 'cytochrome' AND 'oxidase' AND 'subunit' AND 'year' [PDAT]) NOT 'ITS' NOT 'Internal' NOT '5.8S' NOT '28S' NOT 'genome' NOT '18S' NOT 'subunit 3' NOT 'subunit III' NOT 'subunit 2' NOT 'subunit II'.
- (7) NADH1: ('trematoda' [Organism] AND 'dehydrogenase' AND 'subunit' AND 'year' [PDAT]) NOT 'genome' NOT 'subunit 3' NOT 'subunit III' NOT 'subunit 2' NOT 'subunit II' NOT 'subunit 4' NOT 'subunit IV' NOT 'subunit 4L' NOT 'subunit 5' NOT 'subunit V' NOT 'subunit 6' NOT 'subunit VI'.

For all the sequences retrieved for each molecular marker, we determined two parameters: the number of published sequences (individuals), and the number of species sequenced. Both parameters were organized by publication year as they appeared in GenBank, and accumulation curves were built to visualize the increase in both parameters over time (see [fig. 1](#)). The accumulation curve of the number of species per year only considered those identified up to the species level; instead, taxa identified up to the genus level and recorded in GenBank as 'genus' 'sp.' were excluded.

[Figure 1](#) depicts the accumulation curve of the number of sequences for each molecular marker, as well as the number of species of digeneans sequenced between 1990 and 2017, to determine the general trend in the generation of molecular data for this group of parasites. The number of sequences for individual digeneans has grown exponentially for the mitochondrial *cox1* gene, probably due to its wide use in population genetics and phylogeographic studies, as well as in those related to DNA barcoding. Furthermore, the genetic library for the number of species of the 28S rRNA gene has grown at a faster rate ([fig. 1](#)); the number of genera and families to which these species belong has also increased, but at a slower rate. [Figure 1](#) also shows that the number of sequenced species for the 18S ribosomal gene has not increased at the same rate in comparison to those of 28S, rendering the use of both markers in a concatenated analysis practically impossible for a comprehensive taxon sampling. Furthermore, the number of species of digeneans for which the internal transcribed spacer 2 (ITS2) has been sequenced increased at an even faster rate than the 18S gene. Thus far, the 28S rRNA ribosomal gene represents the largest dataset of digenean sequence data ([fig. 1](#)).

### New molecular phylogenetic analyses: assembling newly generated sequences with data from GenBank

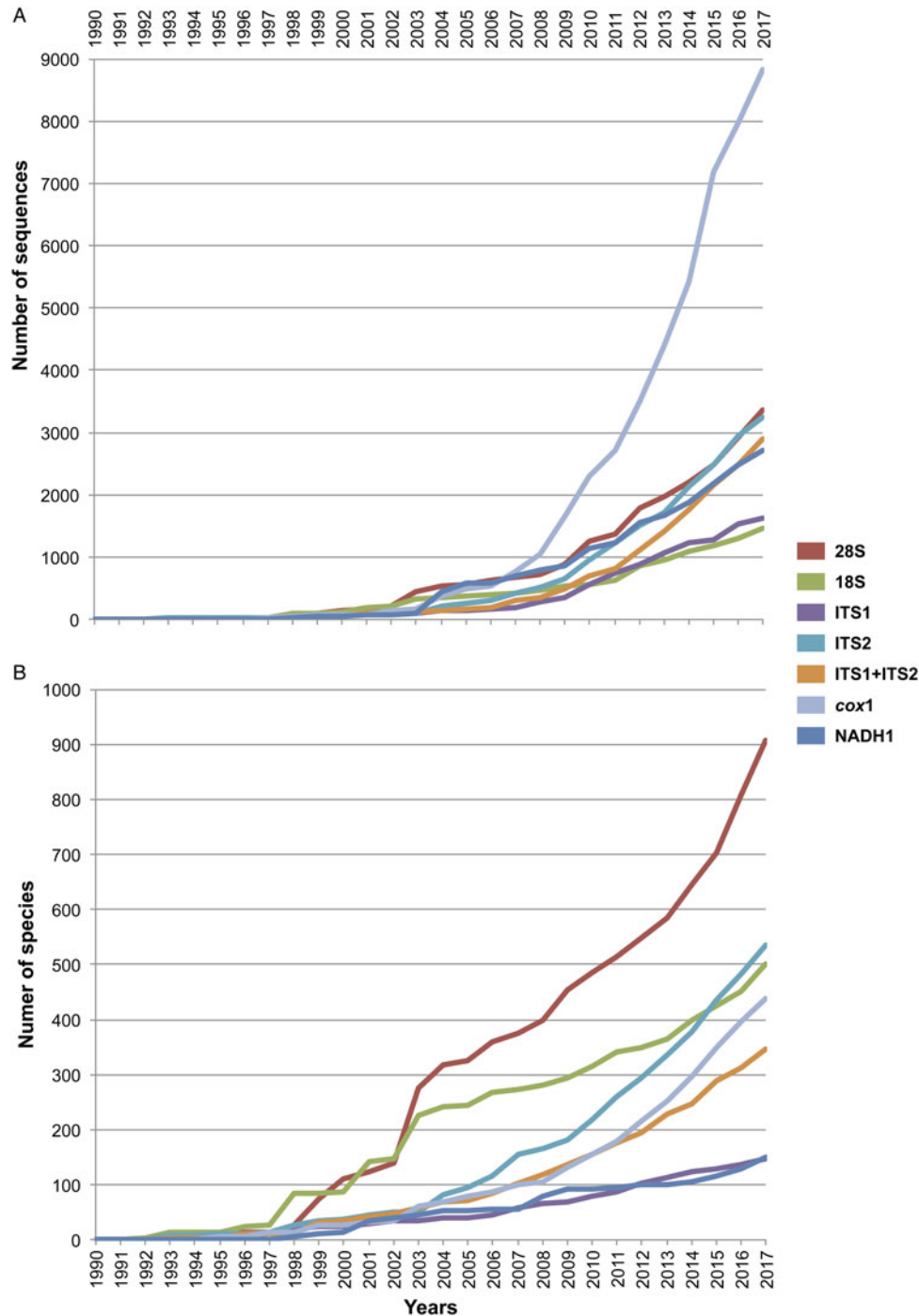
An exhaustive search was carried out in GenBank to find all the published sequences of the 18S and 28S belonging to the class

Trematoda (both Digenea and Aspidogastrea). The criteria for the selection of taxa that were included in the analyses were as follows: (1) the sequence has a length greater than 400 bp; (2) the sequence belongs to taxa identified up to the level of species, and therefore those taxa determined only up to the genus or family are omitted; and (3) the sequence is from adult specimens, which might guarantee proper taxonomic identification. However, some exceptions were made to achieve the highest representation of families during the sequence selection. If a sequence of a certain genus was the only representative of a family but was not identified up to species level (e.g. *Acanthochoasmus* sp., *Amphiorchis* sp., etc.), or the identification was based on larval forms (cercariae or metacercariae), then the sequence was included. Finally, the sequences of species determined as 'cf', 'aff.' or 'sp.' (of different lineages or possible new species according to the original publication) were also included (e.g. *Euparyphium cf murinum*, *Phyllodistomum cf symmetrorchis*).

Fifty-one novel sequences of 28S were generated for specimens collected from different vertebrate species in localities across Mexico ([table 1](#)). Sampled specimens were processed either for morphological examination to achieve the species identification, or for DNA extraction. Genomic DNA was extracted from each individual using the REExtract-N-Amp Tissue PCR kit (Sigma, St. Louis, MS, USA) following the manufacturer's instructions. The 28S gene was amplified using polymerase chain reaction (PCR). The use of primers for PCR amplification, the thermo-cycling profile and sequencing followed the protocols described in greater detail by Hernández-Mena *et al.* (2017). No new sequences of the 18S rRNA gene were obtained in our study.

Alignments were built for each nuclear marker and analysed separately. Newly generated sequences of digeneans were aligned with all the sequences available in GenBank, along with those of some aspidogastreaans that were used as outgroups for rooting the trees. A first alignment was built in each case to discard taxa with sequences that were not homologous, or to delete duplicate sequences. Alignments were performed with the software SATé, under the default setting SATé-II-fast (Aligner = MAFT, Merger = MUSCLE, Tree Estimator = RAXML, Model = GTRCAT; Liu *et al.*, 2009, 2012), implementing 200 iterations. After the iterations, the best alignments were used for phylogenetic analyses. Nucleotide substitution was estimated with jModelTest v2 (Darrriba *et al.*, 2012). The two alignments are available in supplementary material S1 and S2 as fasta files.

Phylogenetic trees were generated using the maximum likelihood (ML) and BI, and the model of nucleotide evolution GTR + GAMMA + I was employed for both phylogenetic inference methods. The ML analysis was performed using raxmlGUI v. 1.3 (Silvestro & Michalak, 2012); the tree with the best fit was obtained after 100 repetitions, and 10,000 bootstrap replicates were run to estimate the nodal support. MrBayes v. 3.2.1 (Ronquist *et al.*, 2012) was employed to perform the BI analysis, and four independent MCMC runs of 40 million generations each were performed. For each run, four chains with a heating parameter value of 0.9 were employed, and the tree topologies were sampled every 1000 generations (printfreq = 1000 samplefreq = 1000 diagnfreq = 10,000). Burn-in periods were set to the first 1500 generations. A 50% majority-rule consensus tree was obtained, and nodal support was estimated as posterior probability values. The phylogenetic trees obtained from both analyses for each molecular marker were visualized in FigTree v.1.4.3. (Rambaut, 2016).



**Fig. 1.** Cumulative curve of the number of sequences (A) and number of sequenced species (B) of digeneans between 1990 and 2017 retrieved from GenBank for seven molecular markers. The internal transcribed spacers were analysed separately as ITS1 and ITS2, and together as ITS1-5.8S-ITS2.

### Phylogenetic analyses of 28S

The final alignment of the 28S dataset consisted of 1077 terminals and was 1983 bp long; the nucleotide frequencies were A = 0.215, C = 0.216, G = 0.316 and T = 0.253. The phylogenetic tree obtained from the ML analysis had a likelihood of  $-198,962.8$ . Phylogenetic analyses inferred through ML and BI yielded an overall similar topology in terms of the inter-relationships among species and among genera allocated in families; however, the phylogenetic relationships among superfamilies were

somewhat different in the ML and BI analyses. In fact, the 50% majority rule consensus tree of BI showed that the relationships among some superfamilies were not fully resolved, particularly within the Plagiorchiida. Figures 2 and 3 depict the condensed phylogenetic trees showing families as terminals (species and genera were collapsed into a single branch), and the arrangement of these families in superfamilies and suborders is presented according to the proposal of Olson *et al.* (2003). The two known and widely accepted orders within Digenea, i.e. Diplostomida and

**Table 1.** Species of digeneans for which 28S rDNA sequences were generated in the present study, ordered alphabetically by family.

Species	Host	Locality	GenBank
Allocreadiidae			
<i>Auriculostoma totonacapanensis</i>	<i>Astyanax aeneus</i> (F)	Metzabok, Chiapas	MK648262
Apocreadiidae			
<i>Crassicutis cichlasomae</i>	<i>Vieja synspila</i> (F)	Naha, Chiapas	MK648263
<i>Homalometron</i> sp. 1a	<i>Balistes vetula</i> (F)	Puerto Morelos, Quintana Roo	MK648264
<i>Homalometron</i> sp. 1b	<i>Balistes vetula</i> (F)	Puerto Morelos, Quintana Roo	MK648265
Bucephalidae			
<i>Bucephalus varicus</i>	<i>Caranx caballus</i> (F)	Chamela, Jalisco	MK648266
<i>Rhipidocotyle</i> sp.	<i>Kyphosus elegans</i> (F)	Chamela, Jalisco	MK648267
Cephalogonimidae			
<i>Cephalogonimus</i> sp.	<i>Lithobates</i> sp. (A)	Lago de Zacapu, Michoacán	MK648268
Cladorchiidae			
<i>Megalodiscus</i> sp. 1	<i>Lithobates</i> sp. (A)	San Pedro Tlaltizapán, Estado de México	MK648269
<i>Megalodiscus</i> sp. 2	<i>Lithobates brownorum</i> (A)	Pantanos de Centla, Tabasco	MK648270
Cryptogonimidae			
<i>Acanthostomum minimum</i>	<i>Rhamdia guatemalensis</i> (F)	Cobá, Quintana Roo	MK648271
Cryptogonimidae gen sp 1a	<i>Centropomus undecimalis</i> (F)	Pantanos de Centla, Tabasco	MK648272
Cryptogonimidae gen sp 1b	<i>Centropomus undecimalis</i> (F)	Pantanos de Centla, Tabasco	MK648273
Cryptogonimidae gen sp 2	<i>Centropomus undecimalis</i> (F)	Salsipuedes, Tabasco	MK648274
<i>Tabascotrema verai</i>	<i>Petenia splendida</i> (F)	Metzabok, Chiapas	MK648275
Derogenidae			
<i>Genarchella</i> sp. 1	<i>Herichthys labridens</i> (F)	Axtla de Terrazas, San Luis Potosí	MK648276
<i>Genarchella</i> sp. 2	<i>Astyanax aeneus</i> (F)	Cenote Noc ac, Yucatán	MK648277
<i>Halipegus</i> sp.	<i>Lithobates</i> sp. (A)	Atenquique, Jalisco	MK648278
Dicrocoeliidae			
<i>Parametadelphis</i> sp.	<i>Pteronotus parnellii</i> (M)	Isla Don Panchito, Jalisco	MK648279
Echinostomatidae			
<i>Rhopalies macracantus</i>	<i>Didelphis masurpialis</i> (M)	Tlacotalpan, Veracruz	MK648280
<i>Rhopalies coronatus</i>	<i>Didelphis masurpialis</i> (M)	Tzucacab, Yucatan	MK648281
Enenteridae			
<i>Cadenatella dohenyi</i>	<i>Kyphosus elegans</i> (F)	Chamela, Jalisco	MK648282
Faustulidae			
<i>Bacciger astyanactis</i>	<i>Astyanax aeneus</i> (F)	Ejido Reforma Agrícola, Chiapas	MK648283
Gorgoderidae			
<i>Xystretrum solidum</i>	<i>Balistes vetula</i> (F)	Puerto Morelos, Quintana Roo	MK648284
Gyliauchenidae			
<i>Ichthyotrema vogelsangi</i>	Haemulidae (F)	Chamela, Jalisco	MK648285
Haploporidae			
<i>Saccocoelioides</i> sp.	<i>Dorosoma anale</i> (F)	Tenosique, Tabasco	MK648286
Hemiuridae			
Hemiuridae gen. sp.	<i>Brycon guatemalensis</i> (F)	Tenosique, Tabasco	MK648287
<i>Lecithochirium</i> sp.	<i>Trichiurus lepturus</i> (F)	Alvarado, Veracruz	MK648288
<i>Opisthadenia dimidia</i>	<i>Ocyurus chrysurus</i> (F)	Chamela, Jalisco	MK648289

(Continued)

Table 1. (Continued.)

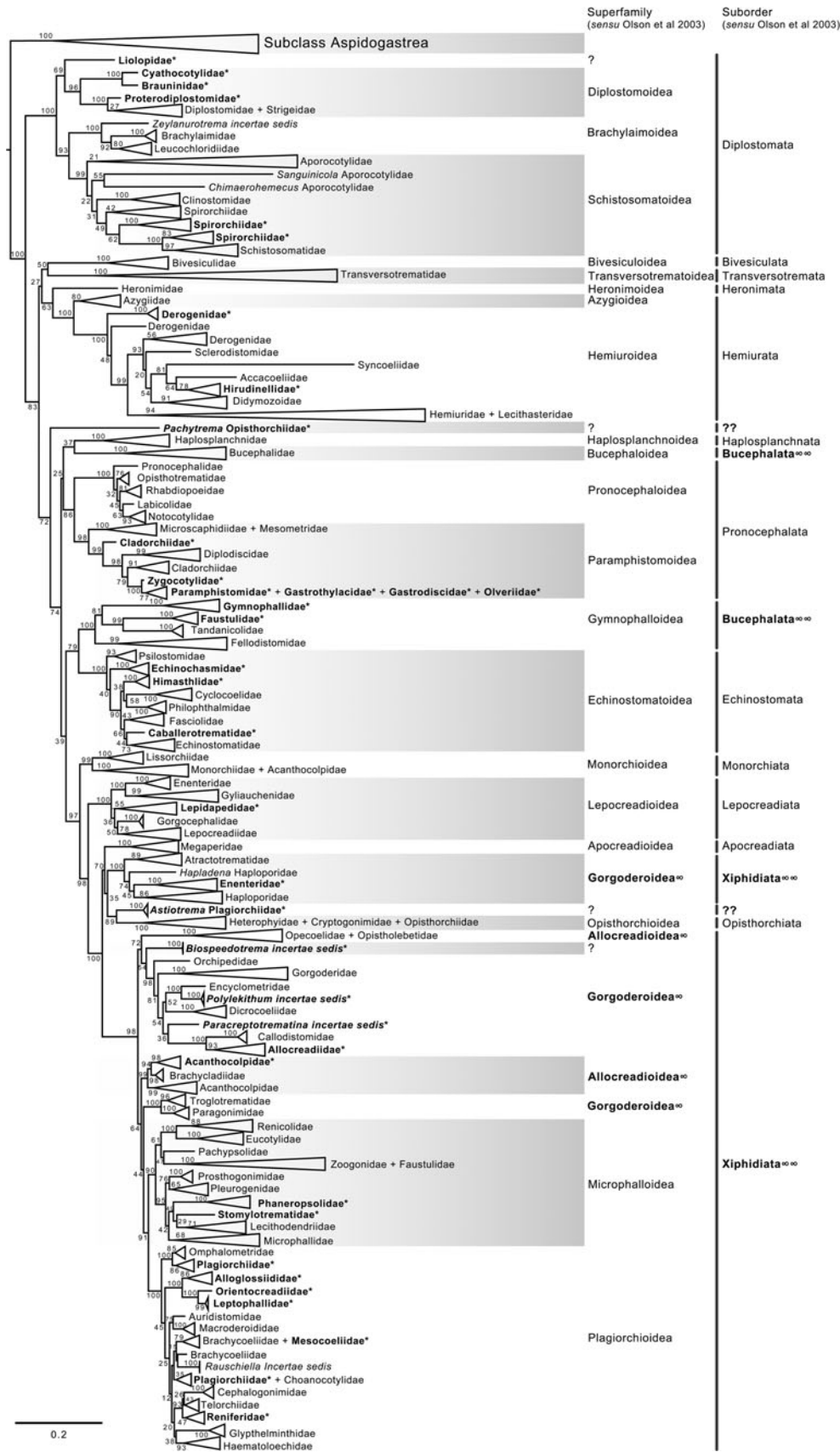
Species	Host	Locality	GenBank
Heterophyidae			
<i>Galactosomum puffini a</i>	<i>Sula neboxii</i> (B)	Isla Isabel, Nayarit	MK648290
<i>Galactosomum puffini b</i>	<i>Sula neboxii</i> (B)	Isla Isabel, Nayarit	MK648291
<i>Haplorchis pumilio</i>	<i>Caracara cheriway</i> (B)	Presa La Angostura, Chiapas	MK648292
<i>Opisthometra planicollis</i>	<i>Sula neboxii</i> (B)	Isla Isabel, Nayarit	MK648293
Hirudinellidae			
<i>Hirudinella ventricosa</i>	<i>Euthynnus alletteratus</i> (F)	Alvarado, Veracruz	MK648294
Lepocreadiidae			
<i>Hypocreadium myohelicatum</i>	<i>Balistes polypepis</i> (F)	Chamela, Jalisco	MK648295
<i>Hypocreadium</i> sp. 1	<i>Balistes vetula</i> (F)	Puerto Morelos, Quintana Roo	MK648296
<i>Lepotrema</i> sp.	<i>Balistes vetula</i> (F)	Puerto Morelos, Quintana Roo	MK648297
<i>Lepocreadium opsanusi</i>	<i>Umbrina xanti</i> (F)	Chamela, Jalisco	MK648298
Lecithasteridae			
Lecithasteridae gen. sp.	<i>Haemulon flaviguttatum</i> (F)	Chamela, Jalisco	MK648299
Microsaphidiidae			
<i>Octangioides ujati</i>	<i>Vieja synspila</i> (F)	San Antonio del Río, Campeche	MK648300
Monorchhiidae			
Monorchhiidae gen sp 1	<i>Haemulon flavolineatum</i> (F)	Puerto Morelos, Quintana Roo	MK648301
Monorchhiidae gen sp 2	<i>Haemulon flavolineatum</i> (F)	Puerto Morelos, Quintana Roo	MK648302
Opecoelidae			
<i>Cainocreadium</i> sp. 1	<i>Hoploplogagrus guentherii</i> (F)	Chamela, Jalisco	MK648303
<i>Cainocreadium</i> sp. 2	<i>Haemulon flavolineatum</i> (F)	Puerto Morelos, Quintana Roo	MK648304
<i>Helicometrina nimia</i>	<i>Haemulon flaviguttatum</i> (F)	Chamela, Jalisco	MK648305
<i>Opecoeloides fimbriatus</i>	<i>Lutjanus guttatus</i> (F)	Chamela, Jalisco	MK648309
<i>Opecoeloides</i> sp. 2	<i>Umbrina xanti</i> (F)	Chamela, Jalisco	MK648307
Opecoelidae gen. sp. 1	<i>Haemulon flavolineatum</i> (F)	Puerto Morelos, Quintana Roo	MK648308
<i>Opegaster</i> sp.	<i>Tomicodon</i> sp. (F)	Barra de Cuatunaco, Oaxaca	MK648306
Plagiorchiidae			
<i>Choledocystus</i> sp.	<i>Rhinella horribilis</i> (A)	Presa Temascal, Oaxaca	MK648310
Renicolidae			
<i>Renicola thapari</i>	<i>Sula neboxii</i> (B)	Isla Isabel, Nayarit	MK648311
Telorchhiidae			
<i>Telorchis corti</i>	<i>Thamnophis eques</i> (R)	Jarácuaro, Michoacán	MK648312

A, amphibian; R, reptilian; B, bird; M, mammal; F, fish.

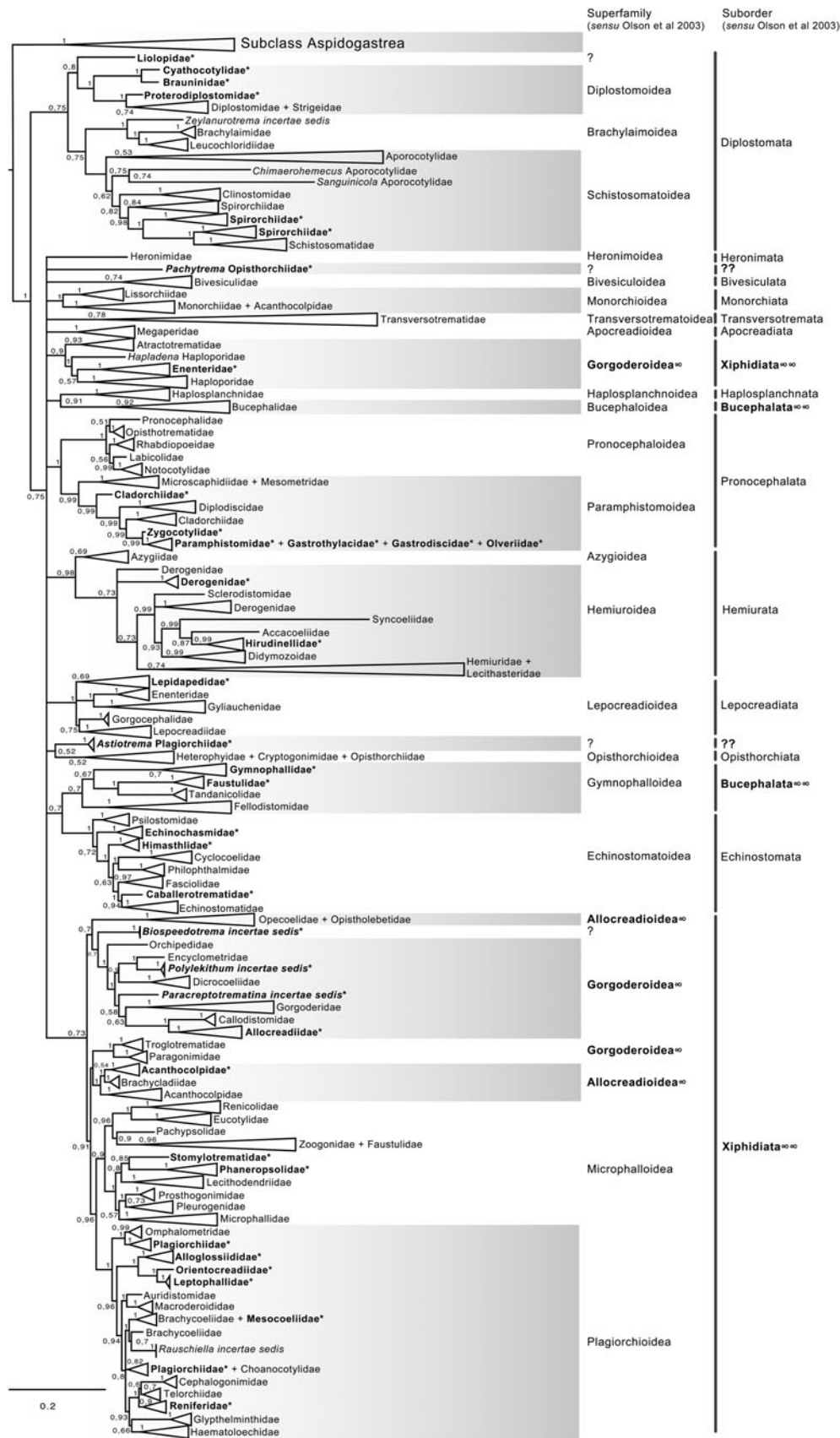
Plagiorchiida La Rue, 1957, were recovered as monophyletic groups with high bootstrap support for the ML analysis (100 and 83 for Diplostomida and Plagiorchiida, respectively), and moderate posterior probability supported the values from the BI analysis (0.75 and 0.75 for Diplostomida and Plagiorchiida, respectively) (figs 2 and 3). Supplementary figs S3 and S4 depict the ML and BI phylogenetic trees for individual sequences, respectively.

The phylogenetic classification of Digenea proposed by Olson *et al.* (2003) was highly supported by our phylogenetic analyses at the level of superfamily and suborder. The inter-relationships

within the Diplostomida, the less diverse order of Digenea, were consistent in both phylogenetic trees, with three major groups making up three superfamilies: (1) Diplostomoidea Poirier, 1886 (including the paraphyletic diplostomids + strigeids, in addition to proterodiplostomids, cyathocotylids and brauninids), and both analyses suggested that liolopids could be considered members of the Diplostomoidea; (2) Brachylaimoidea Joyeux and Foley, 1930 (including brachylaimoids, leucochloridiids, and *Zeylanurotrema* Cruz & Sanmugasunderam, 1973); and (3) Schistosomatoidea Stiles and Hassal, 1898, including the blood flukes (aporoctylids, spirorchhiids, and schistosomatids) and clinostomids. Two families



**Fig. 2.** Condensed tree based on the maximum-likelihood phylogenetic analysis constructed based on the partial (D1–D3) large subunit ribosomal gene (lsrDNA = 28S rDNA) of 1079 species of digeneans included in 106 families; species of the subclass Aspidogastrea were used as outgroups. The tree has a likelihood of –198,962.897393. Bootstrap support values for ML are provided at the nodes. The phylogenetic classification follows that of Olson *et al.* (2003) for superfamilies and suborders of the subclass Digenea. \* refers to the genera and families not included in Olson *et al.* (2003) analysis. These taxa are in bold. ∞ indicates non monophyletic subfamilies and suborders.



**Fig. 3.** Condensed tree based on the Bayesian inference constructed based on the partial (D1–D3) large subunit ribosomal gene (lsrDNA = 28S rDNA) of 1079 species of digeneans included in 106 families; species of the subclass Aspidogastrea were used as outgroups. Posterior probability support values for BI are provided at the nodes. The phylogenetic classification follows that of Olson *et al.* (2003) for superfamilies and suborders of the subclass Digenea. \* refers to the genera and families not included in Olson *et al.* (2003) analysis. These taxa are in bold. ∞ indicates non monophyletic subfamilies and suborders.



were recovered as paraphyletic, i.e. Aporocotylidae Odhner, 1912 and Spirorchidae Stunkard, 1921. Instead, the inter-relationships of the Plagiorchiida were less consistent as several groupings were supported by low nodal support values. Two of the superfamilies (Gorgoderoidea Looss, 1901 and Allocreadioidea Looss, 1902) and two of the suborders (Bucephalata La Rue, 1926 and Xiphidiata Olson, Cribb, Tkach, Bray and Littlewood, 2003) within the order Plagiorchiida as recognized by Olson *et al.* (2003) were not recovered as monophyletic in our analyses (see figs 2 and 3). Our 28S phylogenetic tree of Digenea included genera and species representatives of 106 families. Six families were recovered either as paraphyletic or polyphyletic assemblages, including Derogenidae Nicoll, 1910, Cladorchiidae Fischoeder, 1901, Acanthocolpidae Lühe, 1906, Faustulidae Poche, 1926, Enenteridae Yamaguti, 1958, Plagirotchiidae Lühe, 1901 and Brachycoeliidae Looss, 1899 (fig. 2). Additionally, several groupings at the family level showed that the representative genera and species were intermingled, i.e. Diplostomidae Poirier, 1886 + Strigeidae Railliet, 1919; Hemiuridae Looss, 1899 + Lecithasteridae Odhner, 1905; Microscaphidiidae Looss, 1900 + Mesometridae Poche, 1926; Paramphistomidae Fischoederr, 1901 + Gastrothylacidae Travassos, 1934 + Gastrodiscidae Monticelli, 1892 + Olveriiidae Yamaguti, 1958; Monorchidae Odhner, 1911 + Acanthocolpidae Lühe, 1906; Megaperidae Manter, 1934; Heterophyidae Leiper, 1909 + Cryptogonimidae Ward, 1917 + Opisthorchiidae Looss, 1899; Opecoelidae Ozaki, 1925 + Opistholebetidae Fukui, 1929; Zoogonidae Odhner, 1902 + Faustulidae; Brachycoeliidae Looss, 1899 + Mesocoeliidae Dullfus, 1933; and Plagiorchiidae + Choanocotylidae Jue Sue & Platt, 1998 (see fig. 2). Furthermore, at least five additional families had to be erected to assign genera classified as *inserta sedis* after the phylogenetic analysis of the 28S rRNA gene: *Zeylanurotrema* (considered either a member of the Brachylaimidae Joyeux & Foley or Urotrematidae Poche, 1926); *Biospeedotrema* Bray, Waeschenbach, Dyal, Littlewood & Morand, 2014 (considered a member of the Opecoelidae); *Polylekitum* Arnold, 1934 and *Paracreptotrematina* Amin & Myer, 1982 (considered members of the Allocreadiidae Looss, 1902), and *Rauschiella* Babero, 1951 (considered a member of the Plagiorchiidae).

Within the Plagiorchiida, the ML analysis revealed two major clades, one including members of five superfamilies, i.e. Bivesiculoidea Yamaguti, 1934, Transversotrematoidea Witenberg, 1944, Heronimoidea Ward, 1918, Azygioidea Lühe, 1906 and Hemiuroidea Looss, 1899. The other 14 superfamilies were included in the second major clade (fig. 2). In our analyses, *Pachytrema calculus* Looss, 1907, a parasite of the marine bird *Tringa nebularia* Gunnerus from the Danube delta, Odessa region (GenBank accession AF151942, Olson *et al.*, 2003), was recovered as the sister taxa of this large group of superfamilies, albeit with a moderate bootstrap support value (72%). Members of the genus *Pachytrema* Looss, 1907 allegedly belong to the family Opisthorchiidae Looss, 1899 (WoRMS, 2018a), although the position of this genus within the Plagiorchiida requires further scrutiny because opisthorchiids were not monophyletic (see fig. 2). Because of the basal polytomy, the BI tree did not provide information about the position of *Pachytrema* (fig. 3). This family will require the erection of a superfamily and suborder, unless further phylogenetic analyses reveal its relationships with other superfamilies of plagiorchiids. The suborder Bucephalata was recovered as polyphyletic because the Bucephalata were not grouped with Gymnophalloidea. By contrast, even though the Xiphidiata was recovered as paraphyletic because haploporids and atractotrematids (Gorgoderoidea *sensu* Olson

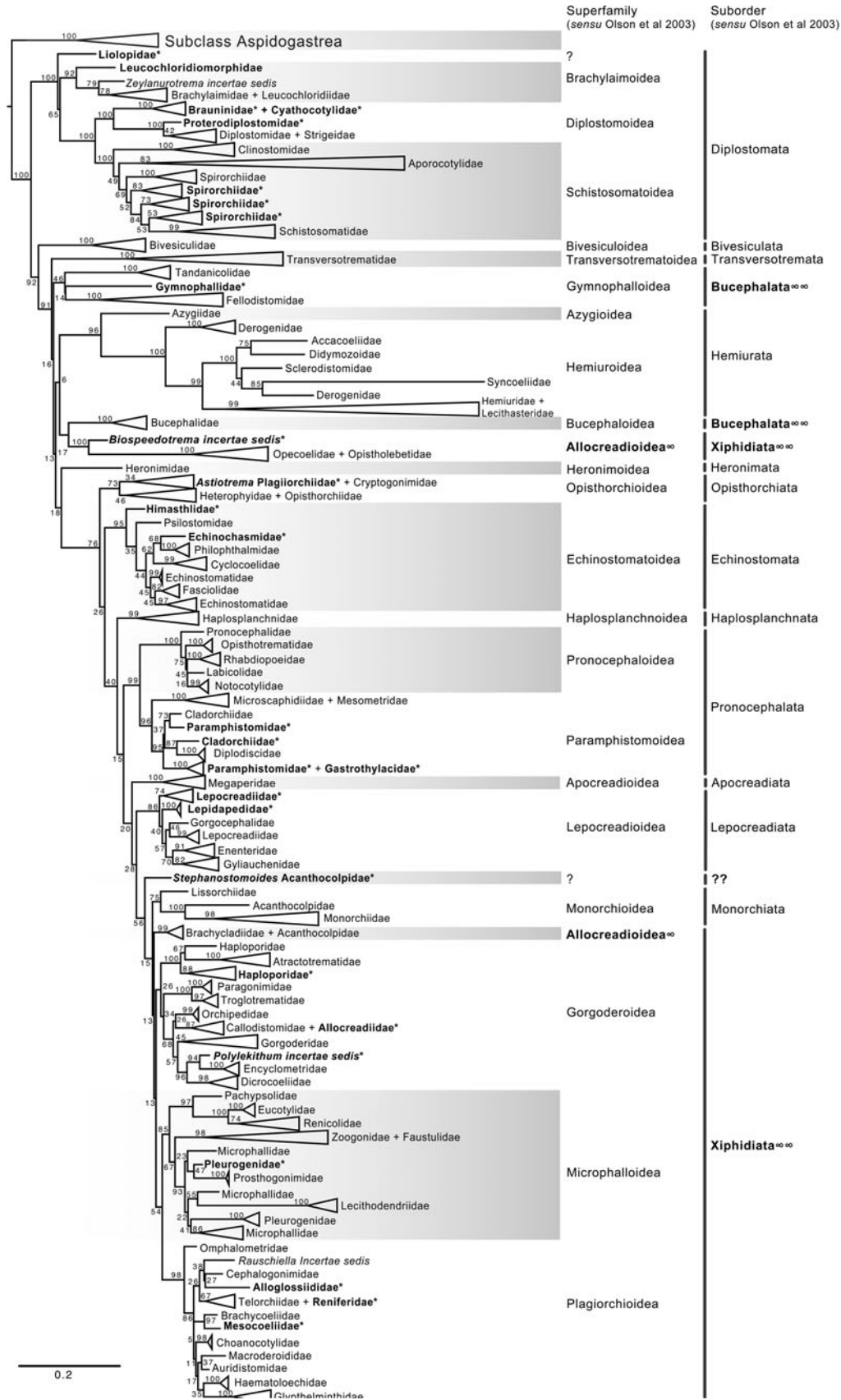
*et al.*, 2003) were not nested with other members of the Gorgoderoidea, most xiphidiatans showed a highly supported monophyletic group (98% bootstrap support and 0.73 posterior probabilities), including representatives of four large superfamilies of digeneans, i.e. Allocreadioidea (*sensu* Olson *et al.*, 2003), Gorgoderoidea (*sensu* Olson *et al.*, 2003), Microphalloidea Ward, 1901 and Plagiorchioidea.

### Phylogenetic analyses of 18S

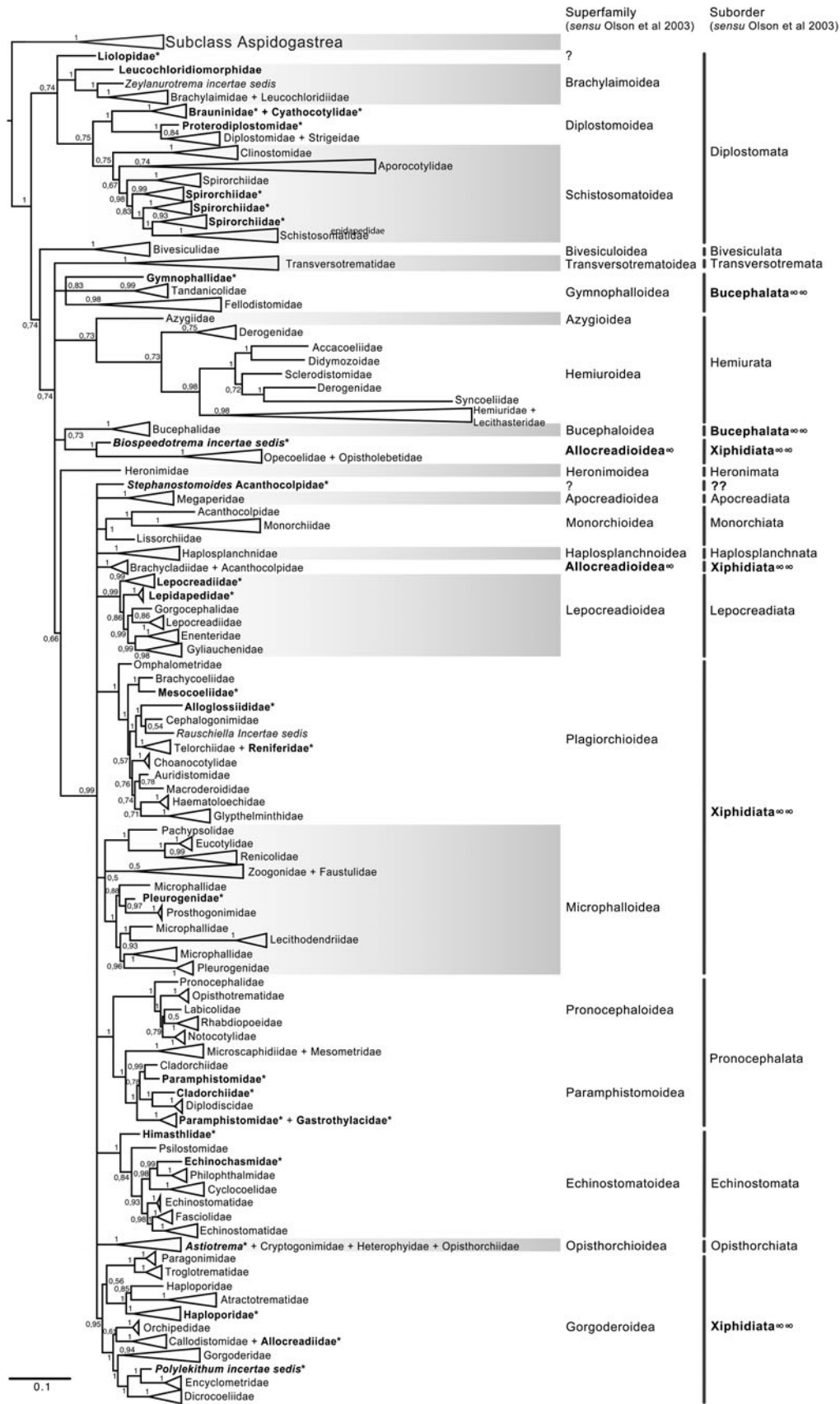
The final alignment of the 18S dataset consisted of 419 terminals and was 2290 bp long; the nucleotide frequencies were A = 0.236, C = 0.218, G = 0.286 and T = 0.260. The phylogenetic tree obtained from the ML analysis had a likelihood of -73,815.4. Phylogenetic analyses inferred using ML and BI yielded a similar topology in terms of recovery of the same groups at the family and superfamily level. Additionally, even though both trees contained fewer terminals than the 28S dataset, the topology also recovered the orders Diplostomida and Plagiorchiida as monophyletic assemblages, with support values of 100 and 92 and 0.74 and 0.74 for ML and BI, respectively (figs 4 and 5). Supplementary figs S5 and S6 show the ML and BI phylogenetic trees for individual sequences, respectively. Figures 4 and 5 depict the condensed phylogenetic tree showing families as terminals, as well as the arrangement of these families in superfamilies and suborders following the proposal of Olson *et al.* (2003). Although the topology of both phylogenetic trees is similar, the BI analysis also showed a lower resolution for the inter-relationships among families of Plagiorchiids because they formed a polytomy, as the tree represents the 50% majority rule consensus tree. In the 18S analysis, the superfamily Allocreadioidea and two suborders, i.e. Bucephalata, and Xiphidiata, were recovered as polyphyletic. The inter-relationships among families showed some differences with respect to the 28S trees, but the major focus of our paper is on the superfamily and suborder levels. For example, in the 18S tree, the families included in Gymnophalloidea Ward, 1901, i.e. Gymnophallidae Odhner, 1905, Tandanicolidae Johnaton, 1927, and Fellodistomidae Nicoll, 1909, were nested in a group with transversotrematids, azygioids and hemuiroids. Instead, in the 28S trees, gymnophalloids were closely related to echinostomatoids. These and other relationships among families require further scrutiny.

### Revisiting the higher-level classification

The inter-relationships of Digenea are better explained through the analysis of the 28S rRNA gene because it is a molecular marker with a higher representation in the number of species and the number of families, providing phylogenetic signal to resolve sister group relationships not only among species and genera but also among higher-level groups, such as families, superfamilies and suborders. Our phylogenetic analysis consisted of 1077 taxa allocated in 106 nominal families for this molecular marker. Using a conservative estimation of a digenean species richness of *c.* 18,000 species (Cribb *et al.*, 2001a; Pérez-Ponce de León, 2001; Gibson *et al.* 2002; Olson *et al.*, 2003; Kostadinova & Pérez-del Olmo, 2014; Littlewood *et al.*, 2015), the genetic library of 28S included approximately only 5.5% of the species included in the subclass Digenea. Still, the sample size of our analysis for the 28S rRNA gene included almost 900 more taxa and 29 more families than those considered in the molecular phylogenetic analyses by Olson *et al.* (2003).



**Fig. 4.** Condensed tree based on the maximum-likelihood phylogenetic analysis constructed based on the complete small subunit of the ribosomal RNA gene (srDNA = 18S rDNA) of 419 species of digeneans included in 98 families; species of the subclass Aspidogastrea were used as outgroups. The tree has a likelihood of  $-73,815.447087$ . Bootstrap support values for ML are provided at the nodes. The phylogenetic classification follows that of Olson *et al.* (2003) for superfamilies and suborders of the subclass Digenea. \* refers to the genera and families not included in Olson *et al.* (2003) analysis. These taxa are in bold.  $\infty$  indicates non monophyletic subfamilies and suborders.



**Fig. 5.** Condensed tree based on the Bayesian inference constructed based on the complete small subunit of the ribosomal RNA gene (*ssrDNA* = 18S rDNA) of 419 species of digeneans included in 98 families; species of the subclass Aspidogastrea were used as outgroups. Posterior probability support values for BI are provided at the nodes. The phylogenetic classification follows that of Olson *et al.* (2003) for superfamilies and suborders of the subclass Digenea. \* refers to the genera and families not included in Olson *et al.* (2003) analysis. These taxa are in bold. ∞ indicates non monophyletic subfamilies and suborders.

However, it should also be noted that despite a smaller number of species represented in the 18S data set, the phylogenetic analyses using this gene were in general terms congruent with the 28S trees since they yielded overall similar higher-level groups (families, superfamilies and suborders). Additionally, despite the accomplishment of a large sequencing effort in the last 15 years for this group of parasitic Platyhelminthes, our results are largely consistent with the topology of the trees obtained in previous phylogenetic analyses (see Olson *et al.* 2003; Littlewood *et al.*, 2015). These findings indicate that the current classification system at higher levels of the taxonomic hierarchy of the group using nuclear markers through conventional Sanger sequencing methods is stable.

With the exception of the suborder Xiphidiata and Bucephalata and the superfamilies Gorgoderoidea and Allocreadioidea (*sensu* Olson *et al.*, 2003), all major groupings were recovered as monophyletic in our analyses, indicating the robustness and stability of the higher-level classification of Digenea using 28S. A different scenario is shown, however, at the inter- and intra-family levels. Phylogenetic relationships among genera within a family, or even families within superfamilies are not fully resolved, most likely due to an incipient representation of taxa. The branch topology at the family level might be a reflection of the increase in representation of families in the analyses, but this might also be a result of the dynamic progress made in the taxonomy of particular digenean groups through molecular phylogenetic analyses. For instance, Tkach *et al.* (2000) used 28S rDNA sequences to study the inter-relationships of the suborder Plagiorchiata, one of the derived and most diverse groups of Digenea. These authors determined that the suborder, as traditionally conceived at that moment, was not monophyletic, and they proposed that it consisted of eight families included in two superfamilies: Plagiorchioidea and Microphalloidea. Two years later, Olson *et al.* (2003) included in the analysis more representative species of the order Plagiorchiata and proposed a new suborder, Xiphidiata, to include the superfamilies contained in Plagiorchiata (*sensu* Tkach *et al.* 2000) plus the superfamilies Gorgoderoidea and Allocreadioidea. Our analyses were consistent with Olson *et al.* (2003), except that Xiphidiata was not recovered as monophyletic because members of the families Atractotrematidae, Haploporidae and *Cadenatella* Dollfus, 1946 were not nested within the group in the 28S dataset (figs 2 and 3); the same results were obtained using the 18S dataset. Bray *et al.* (2009, 2014) used molecular evidence to demonstrate that *Cadenatella* belongs in the superfamily Haploporoidea and not in Enenteridae. Still, haploporoids were not recovered as members of the Xiphidiata in our analyses. Olson *et al.* (2003) erected the suborder Xiphidiata to include digeneans with cercariae bearing a stylet, a feature that is absent in members of the Haploporidae. In our analyses, haploporids and attractotrematids were nested in a clade of the paraphyletic Gorgoderoidea (following Olson *et al.*, 2003 classification), although the Haploporoidea have been recognized as a valid superfamily that includes species of Haploporidae and Atractotrematidae (see Jones *et al.*, 2005; Littlewood *et al.*, 2015). In the World Register of Marine Species, the superfamily Haploporoidea is also considered valid, but it is included in the suborder Xiphidiata. Based on our phylogenetic results, we propose the name Haploporata nom. nov. for the suborder that includes several families included in Haploporoidea, a superfamily that is recognized as valid (see Littlewood *et al.*, 2015; WoRMS, 2018b). In this case, the cercariae of the members of the group lack a stylet, and the synapomorphy that defines the group is the presence of a hermaphroditic sac, as defined in the

key to superfamilies in Bray *et al.* (2008). The addition of Haploporata nom. nov. at the subordinal level also resolves the polyphyly of Xiphidiata in the 28S dataset (fig. 2).

The suborder Bucephalata was recovered as polyphyletic in our analyses of 28S (and also in the 18S analyses) because the suborder include families of the superfamily Gymnophalloidea, i.e. Gymnophallidae, Tandanicolidae, Fellodistomidae and Faustulidae *in part* (see Olson *et al.*, 2003; WoRMS, 2018c). Cribb *et al.* (2001a) provided the first molecular evidence to show that Bucephalidae (superfamily Bucephaloidea) is not closely related to Fellodistomidae and Tandanicolidae. Our phylogenetic analyses confirmed the results of Cribb *et al.* (2001a) because bucephalids are nested in a separate clade from the sister taxa of haplospalchnids (superfamily Haplospalchnoidea). Members of the superfamily Bucephaloidea have been diagnosed in the key to the superfamilies proposed by Bray (2008) by having a mouth well apart from the anterior extremity; caecum single, elongate to saccular; ventral sucker absent; and genital pore close to the posterior end of body. The superfamily is considered to include only the Bucephalidae Poche 1907 (Overstreet & Curran, 2002). Based on the phylogenetic analyses, we propose the name Gymnophallata nom. nov. as the suborder that includes members of the Gymnophalloidea. Furthermore, Bray (2002) considered Gymnophalloidea to contain species of the families Gymnophallidae, Fellodistomidae and Tandanicolidae. Our phylogenetic analyses showed that Faustulidae *in part* were also nested within the Gymnophalloidea, although the family was recovered as a polyphyletic group, supporting the findings obtained by Cutmore *et al.* (2018). Previous molecular evidence provided by Hall *et al.* (1999) and Cribb *et al.* (2001a) has shown that the Faustulidae are distantly related to Fellodistomidae and closely related to the Zoogonidae. Our analyses also confirm these findings. The species of faustulids nesting within the Gymnophalloidea are *Pseudobacciger cheyena* Sun, Bray, Yong, Cutmore and Cribb, 2014 and *Bacciger astyanactis* Lunaschi, 1988 (added to the analysis of the 28S phylogenetic tree). A recent phylogenetic analysis using 28S and ITS DNA sequences has demonstrated that even though *P. cheyena* is currently recognized within the Faustulidae, this species is not closely related to the other faustulid genera, such as *Antorchis* Linton, 1911, *Bacciger* Nicoll, 1924, *Paradiscogaster* Yamaguti, 1934 and *Trigonocryptus* Martin, 1958; Cutmore *et al.* (2014) demonstrated that these genera are associated with the Zoogonidae in the Microphalloidea; instead, *P. cheyena* is nested within Gymnophalloidea as a sister taxa to the Tandanicolidae (Sun *et al.* 2014). Based on these results, the species *Bacciger astyanactis* must be re-allocated because it does not belong in *Bacciger* and should probably be included within *Pseudobacciger*. This nomenclatural change requires further scrutiny and a detailed study of the morphological traits used to diagnose the genus. Additionally, even though it remains unknown whether the two species belong in the same genus, they still require the erection of a new family. Still, according to the phylogenetic analysis using the 28S rRNA gene by Cutmore *et al.* (2018), *Bacciger* might be retained in the Microphalloidea. These authors sequenced two new species of *Bacciger* (not included in our analysis), and both species nested as the sister group of *Pseudobacciger cheyena*, also rendering *Bacciger* polyphyletic as a member of the Tandanicolidae.

In their revised classification of Digenea, Olson *et al.* (2003) recovered Gorgoderoidea and Allocreadioidea as monophyletic groups. However, these two superfamilies were recovered as non-monophyletic assemblages in our 28S phylogenetic trees (figs 2 and 3). Gorgoderoidea should be considered valid for the monophyletic group that includes Orchipediidae, Encyclometridae,

Dicrocoeliidae, Gorgoderidae, Callodistomidae and Allocreadiidae (in addition to the three genera uncovered as incertae sedis, i.e. *Biospeedotrema*, *Polylekithum* and *Paracreptotrematina*, all of which necessitate the erection of a new family after detailed morphological scrutiny). In our analyses, Haploporidae + Atractotrematidae (and *Cadenatella*) were monophyletic and should be considered as Haploporoidea, not Gorgoderoidea. Interestingly, the family Allocreadiidae was a member of Gorgoderoidea, not Allocreadioidea. The family was erected in 1902 by Looss; however, following the International Code of Zoological Nomenclature, the name Gorgoderidae gained priority because it was erected in 1899 by Looss to include the type-genus *Gorgodera* Looss, 1899. Instead, Allocreadioidea is recognized as a superfamily that contains two large groups in the phylogenetic trees reported by Olson *et al.* (2003), one containing Opcoelidae + Opistholebetidae and the other Brachycladiidae + Acanthocolpidae. In our opinion, based on the new phylogenetic tree, the superfamily Allocreadioidea should not be recognized as valid; the grouping of Opcoelidae and Opistholebetidae (the latter recognized as a synonym in WoRMS) should be included in their own superfamily, for which the name Opcoelioidea should be used as in Littlewood *et al.* (2015). Additionally, for the monophyletic group containing Brachycladiidae + Acanthocolpidae, the name Brachycladoidea should be used. Curran *et al.* (2006) were the first using the superfamily name Brachycladoidea after recognizing that Allocreadioidea of Olson *et al.* was not sustainable. The family group name Brachycladiidae Odhner, 1905 predates Acanthocolpidae Lühe, 1906.

Several other studies have also illustrated the dynamic progress achieved in the taxonomy of particular digenean groups through 28S rDNA phylogenetic analyses. These studies have resulted in more stable classification schemes of genera within families and families within superfamilies of the subclass Digenea. For example, at the superfamily level, the studies of Microphalloidea (Tkach *et al.*, 2003), Lepocreadioidea Odhner, 1905 (Bray *et al.* 2009), Brachylaimoidea (Heneberg *et al.*, 2016) Echinostomoidea Looss, 1899 (Tkach *et al.*, 2016), and the recent study of Hemiuroidea by Sokolov *et al.* (2018), can be highlighted. Additionally, at the family level, several studies have determined the inter-relationships among genera and the re-organization of subfamilies, such as the study by Tkach *et al.* (2001) with Omphalometridae Looss, 1899 by Choudhury *et al.* (2007) with Allocreadiidae Looss, 1902 by Cremona *et al.* (2015) with Gymnophallidae Odhner, 1905 by Nolan *et al.* (2015) with Bucephalidae Poche, 1907 by Bray *et al.* (2016) with Opcoelidae Ozaki, 1925 by Hernández-Mena *et al.* (2016) with Macroderoideidae McMullen, 1937 by Curran *et al.* (2018) and by Atopkin *et al.* (2019) with Haploporidae. Still, many other families remain in need of revision through the use of molecular 28S rDNA sequences (and other informative molecular markers) to test the morphology-based classification schemes and to generate a more stable classification at that level of the taxonomic hierarchy.

Kostadinova & Pérez-del Olmo (2014) noted that, in general terms, the molecular phylogenetic analysis of Olson *et al.* (2003) was congruent with the classification system of Digenea in the three volumes of *Keys to the Trematoda* (Gibson *et al.*, 2002; Jones *et al.*, 2005; Bray *et al.* 2008), with some exceptions in the superfamilial placement, although the molecular phylogeny did not support the traditional classification of the group in three suborders. Kostadinova & Pérez-del Olmo (2014) also provided arguments about important omissions in the molecular phylogeny of Olson *et al.* (2003) because the study

was limited in the diversity of taxa, such as the type-families of superfamilies, for example, Allocreadioidea, Gymnophalloidea and Paramphistomoidea. These omissions were actually acknowledged by Olson *et al.* (2003), and these authors discussed that the lack of sequencing data for some families was crucial to the full elucidation of the digenean phylogeny. As previously discussed in our study, the previous two decades have witnessed an increased effort to sample and characterize morphologically and molecularly representative species of digeneans from different families and superfamilies. The augmented representation of species and genera of digeneans allowed us to conduct new phylogenetic analyses and to test the phylogenetic classification of Olson *et al.* (2003). Overall, the results were consistent, even though the sampling effort was increased by almost four orders of magnitude, and by almost two orders of magnitude comparison with the taxon sampling in the analysis by Littlewood *et al.* (2015). Interestingly, our analysis yielded the same 24 superfamilies recovered by Littlewood *et al.* (2015), although the resolution was slightly higher, polytomies were resolved and nodal support was relatively higher for most superfamily groupings, at least in the ML analysis. As previously argued, the 28S rDNA gene provides an adequate phylogenetic signal and overall topological stability. Based on our results (ML analysis of the 28S rDNA gene), we slightly modified the phylogeny-based classification of the Digenea proposed originally by Olson *et al.* (2003):

Class Trematoda Rudolphi, 1808

Subclass Aspidogastrea Faust and Tang, 1936

Subclass Digenea Carus, 1863

Order Diplostomida Olson, Cribb, Tkach, Bray & Littlewood, 2003

Suborder Diplostomata Olson, Cribb, Tkach, Bray & Littlewood, 2003

Superfamily Brachylaimoidea Joyeux and Foley, 1930

Superfamily Diplostomoidea Poirier, 1886

Superfamily Schistosomatoidea Stiles and Hassall, 1898

Order Plagiorchiida La Rue, 1957

Suborder Bivesiculata Olson, Cribb, Tkach, Bray & Littlewood, 2003

Superfamily Bivesiculoidea Yamaguti, 1934

Suborder Transversotremata Olson, Cribb, Tkach, Bray & Littlewood, 2003

Superfamily Transversotrematoidea Witenberg, 1944

Suborder Heronimata Skrjabin and Schulz, 1937

Superfamily Heronimoidea Ward, 1918

Suborder Hemiurata Skrjabin and Guschanskaja, 1954

Superfamily Azygioidea Lühe, 1909

Superfamily Hemiuroidea Looss, 1899

Suborder Haplospalchnata Olson, Cribb, Tkach, Bray & Littlewood, 2003

Superfamily Haplospalchnoidea Poche, 1925

Suborder Bucephalata La Rue, 1926

Superfamily Bucephaloidea Poche, 1907

Suborder Pronocephalata Olson, Cribb, Tkach, Bray & Littlewood, 2003

Superfamily Pronocephaloidea Looss, 1899

Superfamily Paramphistomoidea Fischöder, 1901

**Suborder Gymnophallata nom. nov.**

Superfamily Gymnophalloidea Odhner, 1905

Suborder Echinostomata La Rue, 1926

Superfamily Echinostomoidea Looss, 1902

- Suborder Monorchiatea Olson, Cribb, Tkach, Bray & Littlewood, 2003
- Superfamily Monorchioidea Odhner, 1911
- Suborder Lepocreadiata Olson, Cribb, Tkach, Bray & Littlewood, 2003
- Superfamily Lepocreadioidea Odhner, 1905
- Suborder Apocreadiata\* Olson, Cribb, Tkach, Bray & Littlewood, 2003
- Superfamily Apocreadioidea\* Skrjabin, 1942
- Suborder Haploporata nom. nov.**
- Superfamily Haploporoidea Nicoll, 1914
- Suborder Opisthorchiata La Rue, 1957
- Superfamily Opisthorchioidea Braun, 1901
- Suborder Xiphidiata Olson, Cribb, Tkach, Bray & Littlewood, 2003
- Superfamily Opecoelioidea Ozaki, 1925.
- Superfamily Brachycladioidea Odhner, 1905.
- Superfamily Gorgoeroidea Looss, 1901
- Superfamily Microphalloidea Ward, 1901
- Superfamily Plagiorchioidea Lühe, 1901

\*The suborder Apocreadiata, and the superfamily Apocreadioidea require further scrutiny. In a recent revision of the Megaperidae Manter, 1934 based on morphological characters, the family was recognized as valid, although the family Apocreadiidae was considered a synonym of the latter (Blend *et al.*, 2017).

### Ribosomal vs. complete mitochondrial genome phylogenies

The advancement of molecular technologies is linked to the generation of massive amounts of molecular data for taxonomic studies. NGS technology has augmented our capacity to obtain large amounts of data in a short time, contrasting with partial DNA sequences of nuclear or mitochondrial genes obtained using conventional Sanger sequencing methods. In parasites, and particularly in the subclass Digenea, the use of this technology is still incipient. The first digenean mitogenomes were generated for species of *Schistosoma* Weinland, 1858, a human parasite (see Le *et al.*, 2001; Littlewood *et al.*, 2006; Zarowiecki *et al.*, 2007). Littlewood *et al.* (2006) used the mitogenome data to analyse the evolutionary history of mitochondrial genomes among parasitic platyhelminths; Lawton *et al.* (2011) later used mitogenomic information to study the evolution, speciation and divergence of schistosomes around the world. However, in the last two decades, the complete mitochondrial genome of only *c.* 48 species of digeneans has been sequenced (GenBank database, accessed 17 November 2018). More recently, certain studies have analysed the phylogenetic relationships among species of digeneans using mitogenomes (e.g. Webster & Littlewood, 2012; Brabec *et al.*, 2015; Briscoe *et al.*, 2016; Chen *et al.*, 2016). Some of these studies actually challenged the stability of the current phylogenetic classification based on nuclear rRNA genes, suggesting, for example, that the order Diplostomida was paraphyletic because two diplostomidan superfamilies were nested within the order Plagiorchiida; the significance of the basal dichotomy of Digenea was questioned. For instance, Brabec *et al.* (2015) generated the mitogenome of two species of diplostomids, and their phylogenetic analyses using amino acids and nucleotides recovered Diplostomidae as the sister group of the Plagiorchiida, although those relationships were supported by a

low nodal support value. In a recent study, Locke *et al.* (2018) generated the complete mitochondrial genome of seven additional diplostomoids representing three families and performed a phylogenetic analysis with mitogenomes. To choose between the topologies from the mitochondrial and nuclear phylogenetic analyses, these authors also analysed hundreds of ultra-conserved elements (UCEs) obtained by shotgun sequencing. Even though the mitogenome phylogenetic tree yielded Diplostomida as paraphyletic because strigeids, diplostomids and clinostomids were recovered as sister groups of Plagiorchiida, not Diplostomida, the UCE phylogeny supported the monophyly of the order. All previous phylogenetic analyses of Digenea through nuclear rRNA genes have supported the monophyly of the two large orders within the subclass (Olson *et al.*, 2003; Littlewood *et al.* 2015; this work). However, insufficient taxon sampling for mitogenomes might still be the cause of the discordance between the two sources of molecular data. Locke *et al.* (2018) discussed the possible causes of the mitogenome topology and noted that most discordance occurred in short internal branches, which could be related to a rapid radiation and incomplete lineage sorting. Therefore, with the still limited number of digenean species for which complete mitochondrial genomes have been sequenced, it is not possible to determine the power of the phylogenetic signal of mitogenomes to resolve phylogenetic relationships at deeper levels of the classification of Digenea, in comparison with the resolution power of single nuclear rDNA sequences. However, as discussed by Sanderson (2016), scaling up molecular phylogenetic datasets is methodologically challenging because the amount of data needed to resolve phylogenetic inter-relationships must increase with the number of taxa included. Our study illustrates a case study where the results derived from the use of a 'traditional' (few loci) molecular phylogenetic analysis are in contrast with a NGS-driven analyses where just a few representative species have been sequenced using the new technologies. Future studies will determine whether that addition of taxa or characters will provide a better resolution for the inter-relationships of Digenea, and will demonstrate the utility of mitogenomes in providing a more stable classification system, with higher nodal support.

### Concluding remarks

In this study, we employed large taxon sampling of digeneans to test the consistency of the molecular classification system proposed by Olson *et al.* (2003) through nuclear rDNA sequences. In that comprehensive analysis, species allocated to several families were not represented. Still, the addition of more species included in a wide variety of genera and families indicates that the classification of Digenea is robust and stable. However, inter-relationships among higher levels of the hierarchy, such as superfamilies and families, still require further scrutiny as well as the strategic selection of additional species to incorporate representatives of other families. Inconsistencies regarding the placement and inter-relationships among superfamilies, or the lack of nodal support, require the addition of more taxa; likewise, the reciprocal monophyly and nodal support for most superfamilies shows that the placement of some groups on the tree will not change with the inclusion of more taxa and quite certainly will not change with the use of other molecular markers, such as mitogenomes. In particular, low nodal support for some groupings highlights the need to add more samples (species) to the analyses. Definitely, we pose that higher-level phylogenetic analyses

should consider the use of the variable regions D1–D3 of the 28S rRNA gene. Undoubtedly, this nuclear rRNA gene has the necessary phylogenetic signal to establish inter-relationships among species, as well as among higher-level groups, and can be regarded as reliable for establishing digenean inter-relationships. Then, within particular groups, the addition of other nuclear and mitochondrial genes will be necessary to supply another source of information, which in combination with morphology, host association, host-specificity and biogeography, will provide robust explanations to re-assess not only the species composition within genera, genera within families, and so on but also to generate a well-supported phylogenetic tree that can be used to build robust classifications. Several authors have argued that the addition of more data should lead to a stronger phylogenetic hypothesis (see Nylander, 2001 and references therein); still a debate does exist about what is the most important factor in phylogenetic analysis, characters or taxa. A well-justified concern rises then about the ratio between the number of characters and the number of taxa for a robust analysis. The strategy of our study was to increase the number of taxa and to test the performance of the 28S rRNA gene in resolving the inter-relationships of the Digenea. We acknowledge that there are theoretical considerations involved in the reconstruction of large phylogenies, and that the information content of the selected nuclear gene in our study is over the limit regarding the number of taxa and considering the overall size of the new dataset; it also has practical considerations because large data matrices require more computational time; also, it is well-known that increasing the number of taxa increases the number of possible phylogenetic trees (Felsenstein, 1978). We believe that future advancement on building a robust classification system for this parasitic group will require a strategic sampling and selection of both, taxa and characters. If the D1–D3 most variable region of the 28S rRNA gene continues to be used as the marker of reference to build a higher-level classification of the Digenea, then the number of terminals will have been reduced looking at the representation of families rather than species and genera within each family, thus reducing the number of species on the tree. An alternative option is to keep increasing the number of sequenced taxa of digeneans, i.e. the number of species representing as many families as possible, but also increasing the number of characters by adding other nuclear genes, such as the 18S, which has shown to be valuable in reconstructing phylogenies of digeneans; however, as shown in [fig. 1](#), the number of species sequenced for this marker is less than half than the number of species sequenced for the 28S, and this will require a large sequencing effort. Brabec *et al.* (2015) characterized the complete transcribed region of the nuclear rRNA operon for two species of diplostomids (*c.* 9000 bp); even though this could represent an alternative to increase the number of characters, sequencing effort to obtain the rRNA operon for representative species of a larger number of families of digeneans seems unlikely. Actually, Brabec *et al.* (2015) discovered that the alignment of the rRNA operons of the two species revealed remarkable high levels of nucleotide conservation with coding regions (see Brabec *et al.*, 2015). In brief, we propose that future phylogenetic analyses should be based on the 28S rRNA gene and sampling size of the data matrix should be strategic to avoid sequencing a large number of species for a relatively restricted number of characters from the D1–D3 variable regions. More taxa representing families that have not been yet sequenced should be included, and most probably, as sequences become available, the sequence of only one species for each genus should be analysed looking for a

balance between the number of taxa and characters in the 28S data matrix.

The explanatory power of mitogenomes remains controversial until more species are included in the analysis to overcome the incomplete taxon sampling. For instance, we agree with Locke *et al.* (2018) that sequencing the mitogenome of early divergent lineages of diplostomoids, such as brachylaimids, liolopids, aporocotylids and spirorchiiids, as well as plagiorchiiids, such as bivesiculids, is absolutely necessary to resolve the conflict regarding the position of diplostomoids within the order Plagiorchiiida; finally, sequencing the mitogenome of an aspidogastrea for use as an outgroup for the phylogenetic analysis of Digenea may contribute to the identification of congruent results between nuclear rRNA genes and mitogenome phylogenies, rendering an even higher stability to the classification system of the group. Novel data generated through NGS technology are becoming highly necessary in taxonomic studies and are required to accomplish the ‘next-generation’ Tree of Life (see Sanderson, 2016); transiting into the NGS era is becoming easier and cheaper every day (Olson *et al.*, 2016). It is possible then that the near future will witness a dramatic change in the use of massive amounts of molecular data to resolve taxonomic problems, from species delimitation to phylogenetic relationships. In parasites, due to their implications in human and animal health, the NGS era has undergone rapid development. The International Helminth Genomes Consortium (2019) combined 36 published genomes of medically important nematodes and platyhelminths into a genome comparison with non-parasitic worms, allowing the identification of gene families at key nodes of the phylogeny that are relevant for the parasitic way of life; the authors identified gene families that modulate host immune responses or genes that enable parasite migration through host tissues genomics. In our opinion, we cannot stop sequencing fragments of nuclear and mitochondrial genes to resolve the taxonomic problems of parasites. We must increase sampling efforts and conduct more phylogenetic analyses to try to reach a stable classification system for the entire subclass Digenea (and other groups of parasitic helminths). This needs to be in parallel with the development of NGS methods. Whether or not the results from NGS will produce more accurate estimations of the ‘true’ phylogenetic history of the Digenea than the traditional nuclear markers remain to be seen.

**Supplementary material.** To view supplementary material for this article, please visit <https://doi.org/10.1017/S0022149X19000191>

**Author ORCIDs.**  Gerardo Pérez-Ponce de León, 0000-0001-6472-5113.

**Acknowledgements.** We thank Laura Márquez Valdellamar for technical assistance with the automatic sequencer. We also thank Miguel Rubio, Rogelio Aguilar, Jorge López and Valeria Salinas for the donation of digenean specimens for DNA sequencing.

**Financial support.** This research was supported by a grant from the Programa de Apoyo a Proyectos de Investigación e Innovación Tecnológica (PAPIIT-UNAM) IN202617 to GPPL. DIHM thanks the support of the Programa de Posgrado en Ciencias Biológicas, UNAM and CONACYT for the scholarship to complete his PhD programme.

**Conflicts of interest.** None.

**Ethical standards.** Specimens of digeneans collected in vertebrates of Mexico were obtained under the Cartilla Nacional de Colector Científico (FAUT 0057) issued by the Secretaría del Medio Ambiente y Recursos Naturales (SEMARNAT), to GPPL.

## References

- Atopkin DM, Besprozvannykh VV, Ha DN, Nguyen VH, Nguyen VT and Chalenko KP (2019) A new subfamily, Pseudohaploporinae subfam. n. (Digenea: Haploporidae), with morphometric and molecular analyses of two new species: *Pseudohaploporus vietnamensis* n. g., sp. n. and *Pseudohaploporus planilzum* n. g., sp. n. from Vietnamese mullet. *Parasitology International* **60**, 17–24.
- Blasco-Costa I, Cutmore SC, Miller TL and Nolan MJ (2016) Molecular approaches to trematode systematics: ‘best practice’ and implications for future study. *Systematic Parasitology* **93**, 295–306.
- Blend CK, Karar YM and Dronen NO (2017) Revision of the Megaperidae Manter, 1934 n. comb. (Syn. Apocreadiidae Skrjabin, 1942) including a reorganization of the Schistorchiinae Yamaguti, 1942. *Zootaxa* **4358**, 1–44.
- Brabec J, Kostadinova A, Scholz T and Littlewood DTJ (2015) Complete mitochondrial genomes and nuclear ribosomal RNA operons of two species of *Diplostomum* (Platyhelminthes: Trematoda): a molecular resource for taxonomy and molecular epidemiology of important fish pathogens. *Parasites and Vectors* **8**, 336.
- Bray RA (2002) Superfamily Gymnophalloidea Odhner, 1905. pp. 245–251 in Gibson DI, Jones A and Bray RA (Eds) *Keys to the Trematoda*, Vol. 1. Wallingford, CABI Publishing.
- Bray RA (2008) Introduction and key to superfamilies. pp. 1–5 in Bray RA, Gibson DI and Jones A (Eds) *Keys to the Trematoda*, Vol. 3. Wallingford, CABI Publishing.
- Bray RA, Cribb TH, Littlewood DTJ and Waeschenbach A (2016) The molecular phylogeny of the digenean family Opecoelidae Ozaki, 1925 and the value of morphological characters, with the erection of a new subfamily. *Folia Parasitologica* **63**, 013.
- Bray RA, Cribb TH, Waeschenbach A and Littlewood DTJ (2014) Molecular evidence that the genus *Cadenatella* Dollfus, 1946 (Digenea: Plagiorchiida) belongs in the superfamily Haploporoidea Nicoll, 1914. *Systematic Parasitology* **89**, 15–21.
- Bray RA, Gibson DI and Jones A (2008) *Keys to the Trematoda*, Vol. 3. Wallingford, UK, CAB International and The Natural History Museum. 824 pp.
- Bray RA, Waeschenbach A, Cribb TH, Weedall GD, Dyal P and Littlewood DTJ (2009) The phylogeny of the Lepocreadioidae (Platyhelminthes, Digenea) inferred from nuclear and mitochondrial genes: implications for their systematics and evolution. *Acta Parasitologica* **54**, 310–329.
- Briscoe AG, Bray RA, Brabec J and Littlewood DTJ (2016) The mitochondrial genome and ribosomal operon of *Brachycladium goliath* (Digenea: Brachycladiidae) recovered from a stranded minke whale. *Parasitology International* **65**, 271–275.
- Brooks DR, Bandoni SM, MacDonald CA and O’Grady RT (1989) Aspects of the phylogeny of the Trematoda Rudolphi, 1808 (Platyhelminthes: Cercomeria). *Canadian Journal of Zoology* **67**, 260–294.
- Brooks DR, O’Grady and Glen R (1985) Phylogenetic analysis of the Digenea (Platyhelminthes: Cercomeria) with comments in their adaptive radiation. *Canadian Journal of Zoology* **63**, 873–883.
- Chen L, Feng Y, Chen HM, Wang LX, Feng HL, Yang X, Mughal MN and Fang R (2016) Complete mitochondrial genome analysis of *Clinostomum complanatum* and its comparison with selected digeneans. *Parasitology Research* **115**, 3249–3256.
- Choudhury A, Rosas-Valdez R, Johnson RC, Hoffman B and Pérez-Ponce de León G (2007) The phylogenetic position of Allocreadiidae (Trematoda: Digenea) from partial sequences of the 18S and 28S ribosomal RNA genes. *Journal of Parasitology* **93**, 192–196.
- Cremonte F, Gilardini C, Pina S, Rodrigues P and Ituarte C (2015) Revision of the family Gymnophalloidea Odhner, 1905 (Digenea) based on morphological and molecular data. *Parasitology International* **64**, 202–210.
- Cribb TH, Bray RA, Littlewood DTJ, Pichelin S and Herniou EA (2001a) The Digenea. pp. 168–185 in Littlewood DTJ and Bray RA (Eds) *Interrelationships of the Platyhelminthes*. London, Taylor and Francis.
- Cribb TH, Bray RA and Littlewood DTJ (2001b) The nature and evolution of the association among digeneans, molluscs and fishes. *International Journal for Parasitology* **31**, 997–1011.
- Cribb TH, Bray RA, Olson PD and Littlewood DTJ (2003) Life cycle evolution in the Digenea: a new perspective from phylogeny. *Advances in Parasitology* **54**, 197–254.
- Curran SS, Pulis EE, Andres MJ and Overstreet RM (2018) Two new species of Saccocoelioides (Digenea: Haploporidae) with phylogenetic analysis of the family, including species of Saccocoelioides from North, Middle, and South America. *Journal of Parasitology* **104**, 221–239.
- Curran SS, Tkach VV and Overstreet RM (2006) A review of *Polylekeithum* Arnold, 1934 and its familial affinities using morphological and molecular data, with description of *Polylekeithum catahoulensis* sp. nov. *Acta Parasitologica* **51**, 238–248.
- Cutmore SC, Bray RA and Cribb TH (2018) Two new species of *Bacciger* Nicoll, 1914 (Trematoda: Faustulidae) in species of *Herklotsichthys* Whitley (Clupeidae) from Queensland waters. *Systematic Parasitology* **95**, 645–654.
- Cutmore SC, Miller TL, Bray RA and Cribb TH (2014) A new species of *Plectognathotrema* Layman, 1930 (Trematoda: Zoogonidae) from an Australian monacanthid, with a molecular assessment of the phylogenetic position of the genus. *Systematic Parasitology* **89**, 237–246.
- Darriba D, Taboada GL, Doallo R and Posada D (2012) jModelTest 2: more models, new heuristics and parallel computing. *Nature Methods* **9**, 772.
- Felsenstein J (1978) The number of evolutionary trees. *Systematic Zoology* **27**, 27–33.
- Fraija-Fernández N, Olson PD, Crespo EA, Raga JA, Aznar FJ and Fernández M (2015) Independent host switching events by digenean parasites of cetaceans inferred from ribosomal DNA. *International Journal for Parasitology* **45**, 167–173.
- Gibson DI (1987) Questions in digenean systematics and evolution. *Parasitology* **95**, 429–460.
- Gibson DI (2002) Class Trematoda Rudolphi, 1808. pp. 1–3 in Gibson DI, Jones A and Bray RA (Eds) *Keys to the Trematoda*, Vol. 1. Wallingford, CABI Publishing.
- Gibson DI and Bray RA (1994) The evolutionary expansion and host–parasite relationships of the Digenea. *International Journal for Parasitology* **24**, 1213–1226.
- Gibson DI, Jones A and Bray RA (Eds) (2002) *Keys to the Trematoda*, Vol. 1. Wallingford, UK, CAB International and The Natural History Museum, 521 pp.
- Hall KA, Cribb TH and Barker SC (1999) V4 region of small subunit rDNA indicates polyphyly of the Fellodistomidae (Digenea) which is supported by morphology and life-cycle data. *Systematic Parasitology* **43**, 81–92.
- Heneberg P, Sitko J and Bizo J (2016) Molecular and comparative morphological analysis of central European parasitic flatworms of the superfamily Brachylaimoidea Allison, 1943 (Trematoda: Plagiorchiida). *Parasitology* **143**, 455–74.
- Hernández-Mena DI, García-Varela M and Pérez-Ponce de León G (2017) Filling the gaps within the classification of the Digenea Carus, 1963: systematic position of the Proterodiplostomatidae Dubois, 1936 within the superfamily Diplostomoidea Poirier, 1886, inferred from nuclear and mitochondrial DNA sequences. *Systematic Parasitology* **94**, 833–848.
- Hernández-Mena D, Mendoza-Garfias B, Ornelas-García CP and Pérez-Ponce de León G (2016) Phylogenetic position of *Magnivitellinum* Kloss, 1966 and *Perezitrema* Barus & Moravec, 1967 (Trematoda: Plagiorchioidae: Macroderoididae) inferred from partial 28S rDNA sequences, with the establishment of Alloglossidiidae n. fam. *Systematic Parasitology* **93**, 525–538.
- International Helminth Genomes Consortium (2019) Comparative genomics of the major parasitic worms. *Nature Genetics* **51**, 163–174.
- Jones A, Bray RA and Gibson DI (Eds) (2005) *Keys to the Trematoda*, Vol. 2. Wallingford, UK, CAB International and The Natural History Museum, 745 pp.
- Kostadinova A and Pérez-del Olmo A (2014) The systematics of the Trematoda. pp. 21–44 in Toldedo R and Fried B (Eds) *Digenetic trematodes. Advances in experimental medicine and biology*. New York, Springer Science+Business Media.
- Lawton SP, Hirai H, Ironside JE, Johnson DA and Rollinson D (2011) Genomes and geography: genomic insights into the evolution and phylogeography of the genus *Schistosoma*. *Parasites & Vectors* **4**, 131.
- Le TH, Humair PF, Blair D, Agatsuma T, Littlewood DTJ and McManus DP (2001) Mitochondrial gene content, arrangement and



- composition compared in African and Asian schistosomes. *Molecular Biochemical and Parasitology* **117**, 61–71.
- Littlewood DTJ** (2008) Platyhelminth systematics and the emergence of new characters. *Parasite* **15**, 333–341.
- Littlewood DTJ, Bray RA and Waeschenbach A** (2015) Phylogenetic patterns of diversity in the cestodes and trematodes. pp. 304–319 in Morand S, Krasnov BR and Littlewood DTJ (Eds) *Parasite Diversity and Diversification: Evolutionary Ecology Meets Phylogenetics*. Cambridge, Cambridge University Press.
- Littlewood DTJ, Lockyer AE, Webster BL, Johnston DA and Le TH** (2006) The complete mitochondrial genomes of *Schistosoma haematobium* and *Schistosoma spindale* and the evolutionary history of mitochondrial genome changes among parasitic flatworms. *Molecular Phylogenetics and Evolution* **39**, 452–467.
- Liu K, Raghavan S, Nelesen S, Linder CR and Warnow T** (2009) Rapid and accurate large-scale coestimation of sequence alignments and phylogenetic trees. *Science* **324**, 1561–1564.
- Liu K, Warnow T, Holder M, Nelesen S, Yu J, Stamatakis P and Linder R** (2012) SATÉ-II: very fast and accurate simultaneous estimation of multiple sequence alignments and phylogenetic trees. *Systematic Biology* **61**, 90–106.
- Locke SA, Van Dam A, Caffara M, Pinto HA, López-Hernández D and Blana CA** (2018) Validity of the Diplostomoidea and Diplostomida (Digenea, Platyhelminthes) upheld in phylogenomic analysis. *International Journal for Parasitology* **48**, 1043–1059.
- Lockyer AE, Olson PD and Littlewood DTJ** (2003) Utility of complete large and small subunit rRNA genes in resolving the phylogeny of the Neodermata (Platyhelminthes): implications and a review of the cercomer theory. *Biological Journal of the Linnean Society* **78**, 155–171.
- Nolan MJ, Curran SS, Miller TL, Cutmore SC, Cantacessi C and Cribb TH** (2015) *Dollfustrema durum* n. sp. and *Heterobucephalopsis perardua* n. sp. (Digenea: Bucephalidae) from the giant moray eel, *Gymnothorax javanicus* (Bleeker) (Anguilliformes: Muraenidae), and proposal of the Heterobucephalopsinae n. subfam. *Parasitology International* **64**, 559–570.
- Nylander JAA** (2001) *Taxon sampling in phylogenetic analysis: problems and strategies reviewed*. Introductory Research Essay No. 1. Department of Systematic Zoology, Evolutionary Biology Centre, Uppsala University. 26 pp.
- Olson PD, Cribb TH, Tkach VV, Bray RA, and Littlewood DTJ** (2003) Phylogeny and classification of the Digenea (Platyhelminthes: Trematoda). *International Journal for Parasitology* **33**, 733–755.
- Olson PD, Hughes J and Cotton JA** (Eds) (2016) *Next generation systematics*. Systematics Association, special volume 85, Cambridge, Cambridge University Press, 347 pp.
- Overstreet RM, SS Curran** (2002) Superfamily Bucephaloidea Poche, 1907. pp. 67–110 in Gibson DI, Jones A and Bray RA (Eds) *Keys to the Trematoda, Vol. 1*. Wallingford, CABI Publishing.
- Pearson JC** (1992) On the position of the digenean family Heronimidae: an inquiry into a cladistic classification of the Digenea. *Systematic Parasitology* **21**, 81–166.
- Pérez-Ponce de León G** (2001) The diversity of digeneans (Platyhelminthes: Cercomeria: Trematoda) in vertebrates in Mexico. *Comparative Parasitology* **68**, 1–8.
- Pérez-Ponce de León G and Nadler S** (2010) What we don't recognize can hurt us: a plea for awareness about cryptic species. *Journal of Parasitology* **96**, 453–464.
- Rambaut A** (2016) FigTree v1.4.3. Available at <http://tree.bio.ed.ac.uk/software/figtree/>
- Ronquist F, Teslenko M, van der Mark et al.** (2012) MrBayes 3.2: efficient Bayesian phylogenetic inference and model choice across a large model space. *Systematic Biology* **61**, 539–542.
- Sanderson MJ** (2016) Perspective: Challenges in assembling the 'next generation' Tree of Life. pp. 13–27 in Olson PD, Hughes J and Cotton JA (Eds) *Next generation systematics*. Systematics Association Special Volume Series. Cambridge: Cambridge University Press.
- Silvestro D and Michalak I** (2012) raxmlGUI: a graphical front-end for RaxML. *Organisms Diversity and Evolution* **12**, 335.
- Sokolov SG, Atopkin DM, Urabe M and Gordeev II** (2018) Phylogenetic analysis of the superfamily Hemiuroidea (Platyhelminthes, Neodermata: Trematoda) based on partial 28S rDNA sequences. *Parasitology* doi: 10.1017/S0031182018001841..
- Sun D, Bray RA, Yong RQ, Cutmore SC and Cribb TH.** 2014. *Pseudobacciger cheneyae* n. sp. (Digenea: Gymnophalloidea) from Weber's chromis (*Chromis weberi* Fowler & Bean) (Perciformes: Pomacentridae) at Lizard Island, Great Barrier Reef, Australia. *Systematic Parasitology* **88**, 141–52.
- Tkach V, Gradda-Kazubska B and Swiderski Z** (2001) Systematic position and phylogenetic relationships of the family Omphalometridae (Digenea, Plagiorchiiida) inferred from partial lsrDNA sequences. *International Journal for Parasitology* **31**, 81–85.
- Tkach VV, Kudlai O and Kostadinova A** (2016) Molecular phylogeny and systematics of the Echinostomatoidea Looss, 1899 (Platyhelminthes: Digenea). *International Journal for Parasitology* **46**, 171–185.
- Tkach V, Littlewood DTJ, Olson PD, Kinsella JM and Swiderski Z** (2003) Molecular phylogenetic analysis of the Microphalloidea Ward, 1901 (Trematoda: Digenea). *Systematic Parasitology* **56**, 1–15.
- Tkach V, Pawlowski J and Mariaux J** (2000) Phylogenetic analysis of the sub-order Plagiorchiiata (Platyhelminthes, Digenea) based on partial lsrDNA sequences. *International Journal for Parasitology* **30**, 83–93.
- Webster BL and Littlewood DTJ** (2012) Mitochondrial gene order change in *Schistosoma* (Platyhelminthes: Digenea: Schistosomatidae). *International Journal for Parasitology* **42**, 313–321.
- WoRMS** (2018a) Opisthorchiidae Looss, 1899. Available at <http://www.marine-species.org/aphia.php?p=taxdetails&id=108442> (accessed 15 November 2018).
- WoRMS** (2018b) Haploporoidea Nicoll, 1914. Available at <http://www.marine-species.org/aphia.php?p=taxdetails&id=468970> (accessed 15 November 2018).
- WoRMS** (2018c) Gymnophalloidea Odhner, 1905. Available at <http://www.marine-species.org/aphia.php?p=taxdetails&id=468970> (accessed 15 November 2018).
- Zarowiecki MZ, Huysse T and Littlewood DTJ** (2007) Making the most of mitochondrial genomes-markers for phylogeny, molecular ecology and bar-codes in *Schistosoma* (Platyhelminthes Digenea). *International Journal for Parasitology* **37**, 1401–1148.