



Distribution of free-living marine nematodes in the Clarion–Clipperton Zone: implications for future deep-sea mining scenarios

Freija Hauquier¹, Lara Macheriotou¹, Tania N. Bezerra¹, Great Egho², Pedro Martínez Arbizu², and Ann Vanreusel¹

¹Marine Biology Research Group, Ghent University (UGent), 9000, Gent, Belgium

²German Centre for Marine Biodiversity Research (DZMB), Senckenberg am Meer, 26382 Wilhelmshaven, Germany

Correspondence: Freija Hauquier (freija.hauquier@ugent.be)

Received: 29 November 2018 – Discussion started: 12 December 2018

Revised: 12 July 2019 – Accepted: 25 July 2019 – Published: 16 September 2019

Abstract. Mining of polymetallic nodules in abyssal seafloor sediments promises to address the growing worldwide demand for metallic minerals. Given that prospective mining operations are likely to have profound impacts on deep seafloor communities, industrial investment has been accompanied by scientific involvement for the assessment of baseline conditions and provision of guidelines for environmentally sustainable mining practices.

Benthic meiofaunal communities were studied in four prospective mining areas of the Clarion–Clipperton Zone (CCZ) in the eastern Pacific Ocean, arranged in a southeast–northwest fashion coinciding with the productivity gradient in the area. Additionally, samples were collected from the Area of Particular Environmental Interest no. 3 (APEI-3) in the northwest of the CCZ, where mining will be prohibited and which should serve as a “source area” for the biota within the larger CCZ. Total densities in the 0–5 cm upper layer of the sediment were influenced by sedimentary characteristics, water depth and nodule density at the various sampling locations, indicating the importance of nodules for meiofaunal standing stock.

Nematodes were the most abundant meiobenthic taxon, and their assemblages were typically dominated by a few genera (generally 2–6) accounting for 40%–70% of all individuals, which were also widely spread along the CCZ and shared among all sampled license areas. However, almost half of the communities consisted of rare genera, each contributing less than 5% to the overall abundances and displaying a distribution which was usually restricted to a single license area. The same observations (dominant and widely spread versus rare and scattered) could be made for

the species of one of the dominant genera, *Halalaimus*, implying that it might be mainly these rare genera and species that will be vulnerable to mining-induced changes in their habitat.

1 Introduction

As mining of mineral resources on land is increasingly burdened with logistic and geopolitical concerns (Petersen et al., 2016), humankind is now looking towards the deep seafloor (~4000–5000 m) as a potential source to meet the global demand for metallic deposits. The abyssal plains of the Clarion–Clipperton Zone (CCZ) in the central eastern Pacific harbour the largest known accumulation of polymetallic nodules, rich in nickel, manganese, copper and cobalt (Halbach and Fellerer, 1980; Mewes et al., 2014). Their occurrence is relatively well-studied and has sparked economic interest from governments and industry. Since the CCZ falls beyond national jurisdiction, the regulatory framework for prospective nodule mining is provided by the International Seabed Authority (ISA), which has so far granted 16 exploration licenses to interested parties (<https://www.isa.org/jm/deep-seabed-minerals-contractors>, last access: 6 September 2019). One of the requirements of the ISA toward contractors is documentation of the biota in their license area and evaluation of the impact that planned mining activities will have on the environment (Lodge et al., 2014; Vanreusel et al., 2016). However, besides these baseline exploration studies, scientific knowledge on the abyssal communities of the

CCZ is relatively scant and generally has limited geographic coverage (Lamshead et al., 2003; Singh et al., 2016).

The abyssal seafloor (> 3000 m) represents the largest benthic ecosystem of the planet, encompassing over 90 % of the world's oceans. Yet faunal diversity and drivers structuring spatial and temporal variability in benthic communities remain poorly understood (Glover and Smith, 2003; Ramirez-Llodra et al., 2010; McClain and Schlacher, 2015; Yasuhara and Danovaro, 2016; Sweetman et al., 2017). Most deep-sea ecosystems are classified as heterotrophic, since they largely depend on photosynthetic production in overlying waters and the associated downward flux of particulate organic carbon for their food requirements (Levin et al., 2001; Ramirez-Llodra et al., 2010; Tittensor et al., 2011; McClain et al., 2012; Radziejewska, 2014). Despite this dependency, which is further complicated by low sedimentation rates and hence low food input at these depths (Petersen et al., 2016; Gollner et al., 2017; Sweetman et al., 2017), biodiversity is high in most deep-sea habitats (Levin et al., 2001), especially for the smaller-sized macro- and meiofauna (Hessler and Sanders, 1967; Ramirez-Llodra et al., 2010). This is partially a consequence of high heterogeneity that exists as a result of the complex geological and hydrological features of the deep seafloor (Vanreusel et al., 2010), which create microscale patchiness in both abiotic and biotic features. Due to their particular role in several ecosystem functions, such as the transfer between bio- and geosphere and modulating biogeochemical cycling of carbon, nutrients and trace elements (Lessin et al., 2018), benthic faunal communities are a crucial constituent for consideration in deep-sea mining bioassessments.

Here the benthic meiofauna of the CCZ, an intermediate component between small microbes and larger-sized macro- and megafauna, was investigated. This size class is mainly dominated by the phylum Nematoda, which occurs in relatively high densities and biodiversity in abyssal soft sediments. Moreover, habitat heterogeneity (Vanreusel et al., 2010) and productivity regimes in overlying waters (Pape et al., 2013; Lins et al., 2014) dictate variability and patchiness in assemblages of this taxon (see also Radziejewska, 2014). Over the past few decades several studies have investigated meiofaunal communities, and nematodes specifically, within the CCZ (e.g. Lamshead et al., 2003; Mahatma, 2009; Miljutina et al., 2010; Radziejewska, 2014; Miljutina et al., 2015; Singh et al., 2016; Pape et al., 2017); however, most of them focused on one particular area. This study reports data for meiofauna across a broad latitudinal and longitudinal range within the CCZ and includes species-level information for a typical subdominant deep-sea genus of nematodes, *Halalaimus* (see Sebastian et al., 2007; Miljutina et al., 2010; Vanreusel et al., 2010, and references therein).

The main focus of this study is the characterization and comparison of nematode communities at six sites, located in four different license areas and the Area of Particular Environmental Interest no. 3 (APEI-3). Moreover, we aim to link

any patterns of density, diversity and/or community composition to environmental conditions, nodule densities and the observed latitudinal productivity gradient (Vanreusel et al., 2016). In terms of mining impacts, we specifically want to identify nematode genera and species distributions across the wider CCZ given that recovery of communities after mining will largely depend on the degree of connectivity between impacted and non-impacted zones. We hypothesize that widespread taxa would have an advantage in this case.

2 Material and methods

2.1 Sampling strategy

Sampling was conducted in the CCZ during the EcoResponse cruise SO239 with RV *Sonne* (Martínez Arbizu and Haeckel, 2015) in March–April 2015. Six different sites situated in four license areas and APEI-3, as established by the ISA, were visited to study the biological, geological and geochemical characteristics across a productivity gradient (Fig. 1; Table 1). License areas were those of the contractors BGR (Germany), IOM (Interoceanmetal Joint Organization), DEME (GSR, Belgium) and IFREMER (France), while APEI-3 was chosen as a no-mining reference. The German license area was further subdivided into a “Reference area” (BGR_RA; limited future mining) and “Prospective area” (BGR_PA; intensive future mining), leading to the following six sampling sites: APEI-3, IFREMER, GSR, IOM, BGR_RA and BGR_PA. The different sampling sites are located in an easterly fashion following a gradient in particulate organic carbon (POC) input (Vanreusel et al., 2016). Sampling depth increased in the opposite direction (Table 1). Finally, there is a latitudinal gradient in sampling locations as well, with APEI-3 being located farther to the north, IFREMER and GSR in the middle, and IOM and BGR in the south of the CCZ.

In each area, three to six multicorer (MUC; 12 cores; inner diameter of 94 mm) deployments were carried out to retrieve undisturbed seafloor sediment samples for analyses of meiofauna and abiotic variables. From each deployment, one or two cores were preserved for meiofauna analysis, and one was preserved for measurement of environmental variables. Meiofauna cores were stored as either bulk samples, i.e. preservation of the upper 0–5 cm in a borax-buffered formalin-seawater solution (final concentration 4 %–8 %) or sliced per centimetre down to 5 cm sediment depth for the IOM samples (each cm slice stored separately on formalin). All meiofauna, except that of the BGR areas, was separated from the sediment by density-gradient centrifugation (three every 12 min at 3000 rpm) with the colloidal silica polymer LUDOX[®] HS-40 as a flotation medium (specific density 1.18 g cm⁻³; Heip et al., 1985; Vincx, 1996) at the Marine Biology lab (Ghent University, Belgium). A similar protocol was adopted for the BGR samples at the DZMB lab (Senckenberg, Germany), using a slightly different centrifugation

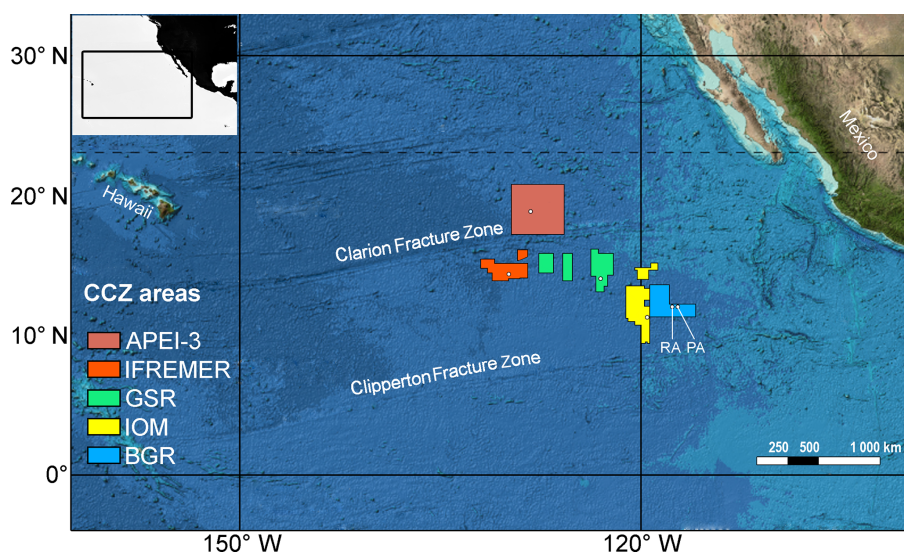


Figure 1. Overview map of geographical sampling region and different license areas studied. Exact sampling locations are indicated with white dots. Within the BGR area, two sites were sampled in close proximity, RA (reference area; left dot) and PA (prospective area; right dot). Colour code based on Vanreusel et al. (2016) and will be maintained throughout the rest of the paper. Base map modified from GEBCO (<https://www.gebco.net>, last access: 6 September 2019). Colour gradient from light to dark represents bathymetry.

Table 1. (a) Sampling date, geographic location, depth and approximate nodule coverage (based on information in Vanreusel et al., 2016) for the different license areas and APEI-3. Note that geographic locations are an approximation, since each area encompasses a number of replicates that are located a few metres apart. (b) Average environmental parameters and standard deviation in the 0–1 cm layer. CPE is chloroplastic pigment equivalent, TN is total nitrogen, TOC is total organic carbon, Clay is sediment fraction with grain size < 4 µm, and Silt is sediment fraction with grain size between 4 and 63 µm.

(a)	Date	Latitude	Longitude	Depth (m)	Nodule density (kg m ⁻²)
APEI-3	23 Apr 2015	18°47.35′ N	128°21.26′ W	4839.1	3.65 ± 2.34
IFREMER	16 Apr 2015	14°02.60′ N	130°07.82′ W	4964.6	19.97 ± 4.05
GSR	9 Apr 2015	13°51.28′ N	123°14.69′ W	4511.8	26.15 ± 1.10
IOM	2 Apr 2015	11°04.63′ N	119°39.60′ W	4434.5	0.70 ± 0.44
BGR_RA	30 Mar 2015	11°47.88′ N	117°30.62′ W	4342.2	3.20 ± 4.23
BGR_PA	24 Mar 2015	11°51.06′ N	117°03.46′ W	4123.9	21.80 ± 1.15
(b)	CPE (µg mL ⁻¹)	TN (wt %)	TOC (wt %)	Clay (%)	Silt (%)
APEI-3	0.06 ± 0.00	0.10 ± 0.00	0.29 ± 0.02	35.48 ± 5.40	61.63 ± 4.91
IFREMER	0.08 ± 0.02	0.12 ± 0.03	0.40 ± 0.07	15.41 ± 1.77	71.89 ± 3.80
GSR	0.11 ± 0.05	0.16 ± 0.07	0.47 ± 0.11	15.64 ± 1.66	70.89 ± 2.42
IOM	0.17 ± 0.03	0.12 ± 0.01	0.53 ± 0.12	10.74 ± 0.47	73.39 ± 0.89
BGR_RA	0.20 ± 0.09	0.10 ± 0.02	0.43 ± 0.12	11.21 ± 0.89	72.90 ± 1.27
BGR_PA	0.28 ± 0.11	0.12 ± 0.01	0.58 ± 0.08	12.21 ± 0.65	70.31 ± 3.01

protocol (three every 6 min at 4000 rpm) and different flotation medium (Levasil H.C. Stark 200, 40%; specific density of 1.17 g cm⁻³). Retention of meiofauna was in both cases achieved using a 32 µm sieve, and individuals were dyed with rose bengal (0.5 g L⁻¹) to facilitate identification. Meiofauna individuals were counted and identified to a higher taxon level under a stereomicroscope (50× magnification) using the guide of Higgins and Thiel (1988).

From each centimetre slice (IOM) or bulk sample (all other areas), between 120 and 320 nematodes were randomly picked, transferred to anhydrous glycerol (Seinhorst, 1959; De Grisse, 1969) and mounted on slides. Later on, genus counts for the different sediment layers of the IOM samples were summed prior to statistical analysis. Genus-level identification was performed under a Leica DMLS compound microscope (1000× magnification) according to the picto-

rial keys of Platt and Warwick (1983, 1988) and Warwick et al. (1998) and the information contained in the NeMYS database (Bezerra et al., 2018). Undamaged mounted specimens of the genus *Halalaimus* were further identified to the species level, with the aid of the pictorial key of Platt and Warwick (1983) and other relevant species descriptions (Bussau, 1993). Individuals were carefully assessed for their morphometric characteristics, evaluated by means of detailed photographs and measured to calculate de Man's ratios (Fortuner, 1990).

Cores for measurement of abiotic variables were sliced in two parts (0–1 and 1–5 cm) and stored at -20°C until further analysis at the UGent Marine Biology Research Group. A 1 mL subsample from each core was obtained and stored at -80°C for pigment analysis, which was carried out at the Max Planck Institute for Marine Microbiology (MPI Bremen). Several sediment parameters were obtained from each slice, but since pigments were only measured in surface sediments, environmental variables used in later analyses are those for the 0–1 cm slice. Grain size distribution was determined by laser diffraction (Malvern Mastersizer Hydro 2000 G, size range 0.02–2000 μm) and classified according to Wentworth (1922). For this study, clay (sediment particles $< 4 \mu\text{m}$) and silt (4–63 μm) size fractions were considered in further analyses linking nematode communities to environmental parameters. Weight percentages of total organic carbon (TOC) and total nitrogen (TN) were measured by combustion of freeze-dried samples using a FLASH 2000 NC Sediment Analyzer (protocol through Interscience BV, Breda, the Netherlands). Pigment analysis included determination of concentrations of chlorophyll *a* and its degradation products, phaeopigments, the sum of which constitutes the chloroplastic pigment equivalents (CPEs; $\mu\text{g mL}^{-1}$). Both chlorophyll and phaeopigments were extracted by means of 90 % acetone, and their concentrations were determined through fluorometry (Trilogy[®] Laboratory Fluorometer, Turner Designs) according to the manufacturer protocol. Finally, depth of the different sampling locations (a proxy for other – unmeasured – environmental variables that tend to vary with water depth; see also Tittensor et al., 2011) and approximate nodule density (in kg m^{-3}) as determined from nodule counts and quantification of box core surfaces taken in the same area (50 cm \times 50 cm; Martínez Arbizu and Haeckel, 2015; Table 1) were included in later statistical analyses.

2.2 Statistical analyses

Total meiofauna and nematode densities for the 0–5 cm sediment layer were standardized to number of individuals per 10 cm^2 (ind. 10 cm^{-2}) prior to further analysis. A one-way analysis of variance (ANOVA; factor “area” with six levels) was used to check for differences in densities among the sampling areas after assumption checking in R (R Core Team, 2013). The relationship between densities and environmental

variables was investigated through linear regression models (stepwise selection procedure; Akaike information criterion – AIC) in R after assessing multi-collinearity among environmental variables using variance inflation factors (VIFs).

Differences in environmental conditions as well as nematode genus communities between the different areas were assessed by means of permutational analysis of variance (PERMANOVA) in PRIMER v6 (Clarke and Gorley, 2006) with the PERMANOVA+ add-on (Anderson et al., 2008). The design included one fixed factor (area), and resulting *P* values were based on 9999 permutations (unrestricted permutation of raw data; type III sum of squares). True permutational *P* values, *P*(perm), were interpreted when the number of unique permutations exceeded 100; alternatively, Monte Carlo *P* values *P*(MC) were used. A PERMDISP test was carried out to assess homogeneity of dispersions in the multivariate space (distances to centroids; *P* value by permutation of least-squares residuals). All environmental variables were standardized to the zero mean and unit variance prior to analyses, and dissimilarity and similarity were quantified using Euclidean distance matrices. Both silt and clay content were log transformed to account for skewness in the data (assessed by draftsman plots). Differences between areas were then visualized by principal component analysis (PCA). In a similar fashion, differences in nematode communities of the different areas were visualized through non-metric multidimensional scaling (nMDS) plots based on Bray–Curtis similarities. Nematode genus counts were first standardized to relative abundances (to account for differences in the number of identified specimens) and then square-root transformed (Hellinger transformation) to reduce the influence of highly dominant genera. Since the number of nematodes that could be identified in each replicate sample varied among areas, absolute genus counts were rarefied to the lowest number of identified individuals (98) with the “rrarefy” function in the package “vegan” (Oksanen et al., 2017) in R. The use of rarefied counts yielded similar results in all analyses and are therefore not reported unless specified otherwise. Multivariate relationships between nematode community assemblages and environmental variables were investigated through the distance-based linear model (DISTLM) procedure in PERMANOVA+, the results of which were visualized in distance-based redundancy analysis (dbrDA) plots. The average number of specimens identified, the number of genera (observed and expected in a sample of 98 individuals to account for differences in the number of individuals identified; see earlier), Hill's N_1 (Hill, 1973; the true numbers' equivalent of the Shannon–Wiener entropy; Jost, 2006) and Pielou's evenness J' were calculated for each area using PRIMER v6. Differences in diversity and evenness indices between sampling areas were assessed by means of one-way ANOVA in R (factor area with six levels).

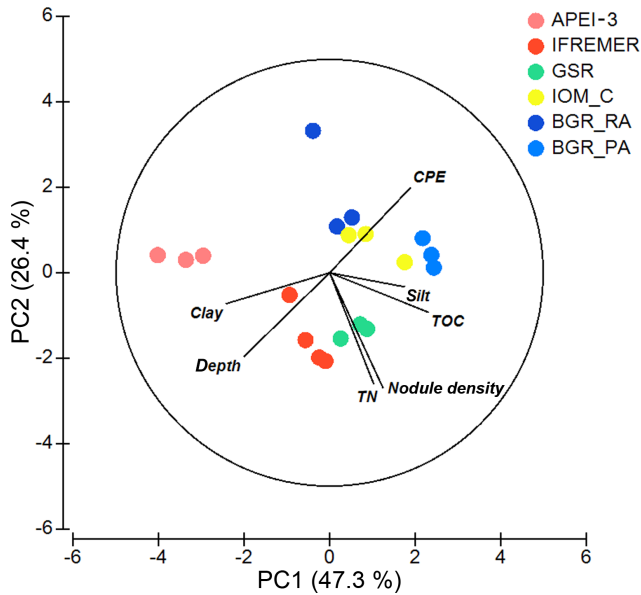


Figure 2. PCA plot of the different areas according to environmental conditions. All variables were normalized prior to analysis. Note that silt and clay content were log transformed to account for skewness in the data. Numbers along PCA axes represent the total variation percentage explained by that axis.

3 Results

Apart from BGR_RA and IOM, all areas within the CCZ showed substantial differences from each other with respect to environmental characteristics (significant PERMANOVA main test result and significant pairwise differences; Table 2; Fig. 2). The APEI-3, located farther to the north, had a finer sediment composition (highest clay fraction) and lower levels of pigments and TOC (Table 1; Fig. 2). A northwest–southeast trend in organic matter content was visible in the sediments, as CPE and TOC increased from APEI-3 to BGR. Other variables that differed notably between sampling sites were depth (increasing from east to west) and nodule density, with the highest nodule densities in the sites sampled in GSR, IFREMER and BGR_PA license areas (Table 1).

Meiofaunal densities ranged between ~ 50 and 550 ind. 10 cm^{-2} , with significantly lower numbers in APEI-3 compared to the other areas (Table 3). Nematodes were clearly dominant ($\sim 86\%$ – 91% of total communities), followed by copepods and nauplii ($\sim 7.5\%$ – 10.5%), while other taxa occurred in very low abundances (max 3%). Multiple linear regression of nematode densities in the function of the environmental variables yielded a model containing the variables clay, depth and nodule density ($F_{3,19} = 24.33$; $P < 0.001$; $R_{\text{adj}}^2 = 0.76$; after removal of one outlier), all negatively influencing densities. Nematode densities were clearly lowest in the APEI-3 (Table 3; one-way ANOVA: $F_{5,18} = 11.3$; $P < 0.001$), characterized by a low amount of nodules, the

finest sediment and a relatively deep location (Table 1), and highest in BGR and IOM.

Nematode genus composition was significantly different between areas (significant PERMANOVA main test, $P < 0.05$; PERMDISP not significant: $P = 0.3661$), although this effect could not be investigated in further detail due to the low number of unique permutations (Table 4). The same pattern arose (PERMANOVA main test $P = 0.0002$; results not shown) when the analyses were repeated with genera grouped into families, with the difference that pairwise comparisons of each of the areas IOM, IFREMER and APEI with BGR_PA were significant despite low permutation numbers (PERMANOVA pairwise test; results not shown). Only when areas were grouped in a latitudinal fashion (APEI is north-western CCZ; IFREMER and GSR are middle CCZ; IOM and BGR are southeastern CCZ) did all pairwise comparisons give significant differences (all $P < 0.02$; results not shown). Overall, average within-area similarity ranged between 50% and 57% , while between-area similarity was only slightly less, ranging between 45% and 57% .

No clear relationship between community assemblages and environmental parameters could be discerned. The DISTLM procedure pointed towards “depth” and “nodule density” as the main variables explaining the community variation (both marginal and sequential P values are significant), but together they only accounted for 19.4% of the variation (results not shown).

In total, 156 different genera belonging to 34 families were identified across all areas, with the average number of genera per area ranging between 32 and 50 (Table 5). The expected number of genera in a sample of 98 individuals (taking into account differences in the number of identified individuals per sample) was comparable for the different areas (one-way ANOVA: $P = 0.43$) yet slightly (but insignificantly) lower for the BGR_PA stations (Table 5). Hill’s index N_1 , which takes genus richness as well as evenness into account, was highest for GSR and IOM (one-way ANOVA: $P = 0.58$). Based on Pielou’s J' , evenness was roughly similar in most areas yet significantly lower in BGR stations compared to GSR and APEI-3 (one-way ANOVA: $F_{5,13} = 6.31$; $P = 0.0035$). Communities were typically dominated by a few genera belonging to the families Monhysteridae, Xyalidae, Chromadoridae and Oxystominidae, which occurred in high relative abundances ($> 5\%$; Tables 5 and 6). Genera *Acantholaimus*, *Halalaimus* and *Monhystrella* displayed especially high relative abundances in one or multiple sampling areas (Table 6). Whereas *Monhystrella* was the most abundant genus across all areas (except for BGR_PA), the contribution of *Halalaimus* was largest in the APEI-3, while *Acantholaimus* became more important towards the southeast of the CCZ (BGR). *Halalaimus* showed a significant negative relationship with the amount of silt in the sediments ($R_{\text{adj}}^2 = 0.633$; $P < 0.001$). In the case of *Acantholaimus*, absolute counts were negatively correlated with depth ($R_{\text{adj}}^2 = 0.495$; $P < 0.001$), while relative abundance was positively associ-

Table 2. PERMANOVA main and pairwise test results based on environmental variables. PERMANOVA design with one fixed factor (area; six levels). *P* values calculated by permutation (9999 permutations) at 5 % significance level. *df* is degrees of freedom, *SS* is sum of squares, *MS* is mean squares, Pseudo-*F* and *t* are effect size, *P*(perm) and *P*(MC) are permutational or Monte Carlo *P* value, and perms is number of unique permutations. Asterisks indicate significant *P* values: * < 0.05 and ** < 0.01.

PERMANOVA						
main test						
Source of variation	df	SS	MS	Pseudo- <i>F</i>	<i>P</i> (perm)	perms
Area	5	106.660	21.332	14.338	0.0001**	9929
residual	13	19.341	1.4878			
Total	18	126				
Pairwise test						
Groups	<i>t</i>	<i>P</i> (MC)	perms			
BGR_PA vs. BGR_RA	3.2005	0.0105*	10			
BGR_PA vs. IOM	3.4114	0.006**	10			
BGR_PA vs. GSR	3.7457	0.0056**	10			
BGR_PA vs. IFREMER	4.7012	0.001**	35			
BGR_PA vs. APEI-3	6.5251	0.0006**	10			
BGR_RA vs. IOM	1.8302	0.1024	10			
BGR_RA vs. GSR	3.1678	0.0115*	10			
BGR_RA vs. IFREMER	3.2360	0.0054**	35			
BGR_RA vs. APEI-3	3.5571	0.0061**	10			
IOM vs. GSR	3.3624	0.0053**	10			
IOM vs. IFREMER	3.2318	0.003**	35			
IOM vs. APEI-3	4.9877	0.003**	10			
GSR vs. IFREMER	2.0347	0.0328*	35			
GSR vs. APEI-3	5.1015	0.0023**	10			
IFREMER vs. APEI-3	4.1434	0.0021**	35			

Table 3. Average meiofauna densities (individuals 10 cm⁻²) and standard deviation for the different CCZ areas. Copepoda includes both adults and nauplius larvae. Other taxa are meiofaunal taxa excluding nematodes and copepods.

	Nematoda	Copepoda	Other taxa	Meiofauna
APEI-3	45.82 ± 6.29	5.71 ± 2.02	1.71 ± 0.63	53.24 ± 8.86
IFREMER	162.99 ± 57.57	14.54 ± 4.53	4.62 ± 1.62	182.15 ± 62.42
GSR	186.31 ± 40.35	21.78 ± 8.81	3.40 ± 0.73	211.49 ± 40.36
IOM	504.58 ± 237.70	35.02 ± 14.42	13.11 ± 8.27	552.71 ± 260.32
BGR_RA	433.77 ± 86.00	37.36 ± 9.35	12.72 ± 3.56	483.84 ± 95.18
BGR_PA	336.43 ± 39.89	28.93 ± 6.47	6.48 ± 0.31	371.84 ± 33.11

ated with CPE values ($R_{adj}^2 = 0.499$; $P < 0.001$), hence its higher contribution in BGR sediments (Table 1).

Notably, most of the genera occurring in high relative abundances were shared among the different sites. Of the 156 genera identified, roughly 15 % (corresponding to 23 genera) were shared among all sampling sites, while nearly half (~ 44 %; 68 genera; or ~ 46 % and 72 genera when BGR is considered to be one) were restricted to a single site (so-called “unique” genera; Fig. 3a; Table 5). Unique genera contributed only a minor fraction to total nematode densities (Table 5) and can thus be considered “rare”. Furthermore, within-area variation in genus composition was also substan-

tial, with more than half of the genera (~ 51 %) on average being unique within a single replicate sample. In the IOM area, nearly 60 % of the genera were found only once, while this number was much lower (43 %) in the IFREMER license area. Relatively more genera were shared between the mid-latitude (GSR and IFREMER) and southeastern (IOM and BGR) latitudinal range of the CCZ than between either of those and the APEI area in the northwest (Fig. 3b).

A total of 143 individuals of the genus *Halalaimus* could be assigned to species level and were classified into 24 different morphospecies (Table 7). As was the case for nematode genera, a limited number of morphospecies was shared

Table 4. PERMANOVA main and pairwise test results for nematode genus composition. PERMANOVA design with one fixed factor (area; six levels). *P* values calculated by permutation (9999 permutations) at 5 % significance level. df is degrees of freedom, SS is sum of squares, MS is mean squares, Pseudo-*F* and *t* are effect size, *P*(perm) and *P*(MC) are permutational or Monte Carlo *P* value, and perms is number of unique permutations. Asterisks indicate significant *P* values.

PERMANOVA						
main test						
Source of variation	df	SS	MS	Pseudo- <i>F</i>	<i>P</i> (perm)	perms
Area	5	7406.1	1481.2	1.6583	0.0002*	9773
residual	13	11 612	893.22			
Total	18	19 018				
Pairwise test						
Groups	<i>t</i>	<i>P</i> (MC)	perms			
BGR_PA vs. BGR_RA	1.1242	0.3145	10			
BGR_PA vs. IOM	1.5766	0.0833	10			
BGR_PA vs. GSR	1.3795	0.1546	10			
BGR_PA vs. IFREMER	1.6038	0.0571	35			
BGR_PA vs. APEI-3	1.4471	0.1272	10			
BGR_RA vs. IOM	1.3324	0.1842	10			
BGR_RA vs. GSR	1.2396	0.2299	10			
BGR_RA vs. IFREMER	1.5702	0.0662	35			
BGR_RA vs. APEI-3	1.3551	0.1599	10			
IOM vs. GSR	1.0685	0.377	10			
IOM vs. IFREMER	1.0012	0.4303	35			
IOM vs. APEI-3	1.1271	0.3155	10			
GSR vs. IFREMER	0.9997	0.4364	35			
GSR vs. APEI-3	1.29	0.1968	10			
IFREMER vs. APEI-3	1.1718	0.2606	35			

Table 5. (a) Nematode genus diversity (averaged over samples per site ± standard deviation) in the different CCZ areas. EG(98) is expected number of genera in a sample of 98 individuals, *N*₁ is Hill’s index and *J*’ is Pielou’s evenness. **(b)** Number of most abundant genera (averaged over samples per site ± standard deviation) occurring with > 5 % in at least one replicate, and the fraction these represent in terms of nematode diversity (% of total genera) and density (% of total density). Additionally, the total number of unique genera per site (i.e. summed for all replicates) is given together with their combined contribution to total nematode density for each site.

(a)	No. identified	No. genera	EG(98)	<i>N</i> ₁	<i>J</i> ’
APEI-3	109.00 ± 6.00	32.33 ± 4.51	30.75 ± 3.91	17.72 ± 3.82	0.82 ± 0.04
IFREMER	104.25 ± 4.35	33.50 ± 1.29	32.46 ± 0.86	16.47 ± 1.38	0.80 ± 0.02
GSR	106.33 ± 5.03	36.00 ± 5.57	34.35 ± 4.60	19.08 ± 3.41	0.82 ± 0.02
IOM	169.00 ± 68.79	38.67 ± 5.86	30.88 ± 3.58	18.92 ± 1.27	0.81 ± 0.04
BGR_RA	265.67 ± 65.04	50.00 ± 6.08	30.97 ± 1.23	18.01 ± 3.84	0.73 ± 0.04
BGR_PA	220.33 ± 41.36	42.33 ± 1.53	28.32 ± 0.93	15.72 ± 0.92	0.74 ± 0.02
(b)	No. dominant genera (> 5 %)	% of total genera	% of total density	No. unique genera and site	% of total density and site
APEI-3	3.67 ± 1.53	11.64 ± 5.85	49.34 ± 11.8	11	4.28
IFREMER	3.00 ± 0.82	8.99 ± 2.65	48.12 ± 5.40	9	2.40
GSR	2.67 ± 1.15	7.45 ± 3.04	42.49 ± 8.09	8	3.76
IOM	3.33 ± 0.58	8.93 ± 3.10	44.65 ± 1.25	14	4.34
BGR_RA	2.67 ± 0.58	5.44 ± 1.60	48.92 ± 7.07	19	3.51
BGR_PA	4.33 ± 1.15	10.20 ± 2.51	60.48 ± 7.96	7	1.82

Table 6. Overview of the most abundant genera (a; relative abundance > 5% in at least one replicate sample) and families (b; average relative abundance > 5% in at least one area) and their average relative abundance (\pm standard deviation) per area. Note that *Halalaimus* is highlighted with bold font, as this is the genus that was identified up to species level.

(a) Genus	APEI-3	IFREMER	GSR	IOM	BGR_RA	BGR_PA
<i>Acantholaimus</i>	7.17 \pm 5.10	9.15 \pm 3.63	12.77 \pm 3.55	9.05 \pm 2.91	17.95 \pm 7.51	25.42 \pm 0.33
<i>Chromadorita</i>	0.89 \pm 0.87	1.44 \pm 1.22	3.76 \pm 2.46	1.21 \pm 0.75	3.00 \pm 1.08	3.04 \pm 1.38
<i>Daptonema</i>	3.06 \pm 2.12	1.17 \pm 0.89	0.93 \pm 0.90	1.11 \pm 0.66	3.75 \pm 0.11	5.46 \pm 1.30
<i>Endeolophos</i>	0.58 \pm 1.00	1.16 \pm 1.75	0.30 \pm 0.52	0.14 \pm 0.24	1.13 \pm 0.86	2.72 \pm 2.26
<i>Halalaimus</i>	10.76 \pm 1.63	2.38 \pm 1.21	2.82 \pm 1.61	4.70 \pm 1.01	3.61 \pm 1.82	5.80 \pm 1.07
<i>Leptolaimus</i>	2.08 \pm 1.97	1.47 \pm 1.31	2.87 \pm 1.80	1.63 \pm 0.61	2.51 \pm 2.36	2.18 \pm 0.75
<i>Microlaimus</i>	1.87 \pm 1.84	3.16 \pm 2.87	1.89 \pm 0.95	4.59 \pm 2.59	1.81 \pm 1.06	0.46 \pm 0.08
<i>Molgolaimus</i>	2.81 \pm 2.75	0.73 \pm 0.91	1.50 \pm 2.60	1.76 \pm 1.53	2.75 \pm 0.26	1.20 \pm 2.08
<i>Monhystrella</i>	26.09 \pm 6.55	31.14 \pm 3.96	25.81 \pm 6.03	26.45 \pm 5.41	27.53 \pm 12.13	21.75 \pm 2.05
<i>Prochromadorella</i>	0.31 \pm 0.53	0.00 \pm 0.00	2.10 \pm 3.64	0.00 \pm 0.00	0.00 \pm 0.00	0.00 \pm 0.00
<i>Prototricoma</i>	1.16 \pm 2.01	6.01 \pm 1.70	4.10 \pm 0.74	1.63 \pm 0.61	0.00 \pm 0.00	0.00 \pm 0.00
<i>Thalassomonhystera</i>	4.29 \pm 2.65	4.15 \pm 2.77	2.78 \pm 1.55	4.36 \pm 1.61	2.45 \pm 1.34	3.27 \pm 1.72
<i>Theristus</i>	0.61 \pm 1.06	2.35 \pm 2.22	0.97 \pm 0.99	4.34 \pm 4.04	1.71 \pm 1.06	0.68 \pm 0.79
<i>Tricoma</i>	3.31 \pm 2.61	2.18 \pm 0.97	2.26 \pm 2.33	2.29 \pm 1.30	0.29 \pm 0.27	1.56 \pm 0.45

(b) Family	APEI-3	IFREMER	GSR	IOM	BGR_RA	BGR_PA
Chromadoridae	8.94 \pm 6.69	12.98 \pm 5.03	21.71 \pm 7.51	11.45 \pm 2.22	23.56 \pm 9.55	32.92 \pm 2.57
Desmoscolecidae	5.40 \pm 4.78	10.09 \pm 1.11	7.94 \pm 3.46	5.31 \pm 2.68	1.42 \pm 1.03	2.37 \pm 0.81
Diplopeltidae	2.50 \pm 1.52	2.60 \pm 1.54	4.40 \pm 0.61	5.49 \pm 3.27	3.85 \pm 0.59	1.56 \pm 0.47
Microlaimidae	2.48 \pm 1.45	3.39 \pm 2.77	3.14 \pm 2.99	6.21 \pm 2.91	2.43 \pm 1.06	0.76 \pm 0.26
Monhysteridae	34.69 \pm 8.10	39.37 \pm 5.53	29.54 \pm 4.22	36.30 \pm 3.93	30.61 \pm 11.89	27.33 \pm 1.33
Oxystominidae	12.65 \pm 3.35	3.81 \pm 1.27	5.37 \pm 2.44	5.34 \pm 2.05	4.73 \pm 1.94	7.32 \pm 0.67
Xyalidae	14.71 \pm 1.74	12.87 \pm 4.20	7.93 \pm 3.75	16.39 \pm 1.57	13.84 \pm 1.47	13.51 \pm 4.50

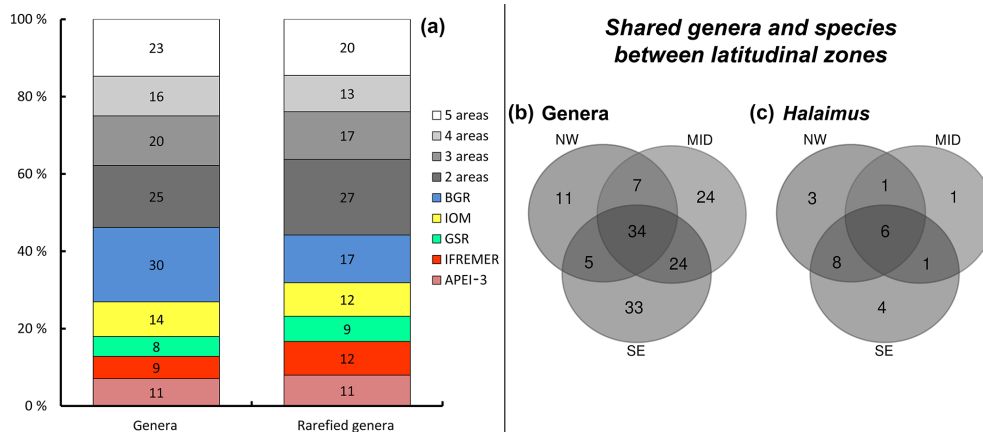


Figure 3. Geographical distribution of genera and *Halalaimus* species. (a) Number of shared genera between the different areas and their relative contribution to totals based on original count data as well as rarefied genus numbers. Note that BGR_RA and BGR_PA were considered to be one area in this case. Values along the y axis represent the relative contribution of unique and shared genera, while the number indicated in each bar represents the absolute count. (b) Partitioning of genera between latitudinal zones (NW = APEI-3; MID = IFREMER + GSR; SE = IOM + BGR). Genus numbers based on rarefied counts. (c) Partitioning of *Halalaimus* species between latitudinal zones.

among all sampling areas (five species), while several species had restricted distributions, occurring in just one or two areas (Table 7; Fig. 3b and c). The highest species diversity (18) of *Halalaimus*, which was also accompanied by the highest relative abundances, was found within the APEI-3 (Fig. 3).

4 Discussion

The importance of meiofauna in deep-sea abyssal sediments has been demonstrated repeatedly (e.g. Wei et al., 2010). While biomass, abundance and size of organisms of different size classes (mega-, macro- and meiofauna) all show a

Table 7. Species counts for *Halalaimus* per area. Number of individuals per area for each species, ranked according to decreasing geographical spread. When individuals strongly resembled a certain species but without a 100 % match for all the characteristics, they were labelled as “affinity” (aff.) to the closest species.

	APEI-3	IFREMER	GSR	IOM	BGR_RA	BGR_PA
<i>Halalaimus abyssus</i> Bussau, 1993	4	1	2	6	6	6
<i>Halalaimus egregius</i> Bussau, 1993	2	1	1	3	5	4
<i>Halalaimus longinquus</i> Bussau, 1993	6	1	1	2	4	3
<i>Halalaimus oblongus</i> Bussau, 1993	4	2	1	1	5	4
<i>Halalaimus praestans</i> Bussau, 1993	2	2	1	3	5	2
<i>Halalaimus absconditus</i> Bussau, 1993	2	1	1		5	3
<i>Halalaimus aedificandistudiosus</i> Bussau, 1970	1				1	1
<i>Halalaimus</i> aff. <i>amphidellus</i> Vitiello, 1970	1			1		2
<i>Halalaimus</i> aff. <i>delamarei</i> Vitiello, 1970			1	1		4
<i>Halalaimus</i> aff. <i>absconditus</i> Bussau, 1993	1					1
<i>Halalaimus</i> aff. <i>marri</i> Mawson, 1958	1	1				
<i>Halalaimus</i> aff. <i>praestans</i> Bussau, 1993	1			2		
<i>Halalaimus</i> sp. <i>indeterminabilis</i>	2			1		
<i>Halalaimus arundinaceus</i> Bussau, 1993	1			1		
<i>Halalaimus filicorpus</i> Vitiello, 1970	2					1
<i>Halalaimus longicolis</i> Allgén, 1932	1					1
<i>Halalaimus</i> aff. <i>abyssus</i> Bussau, 1993	2					
<i>Halalaimus</i> aff. <i>egregius</i> Bussau, 1993						3
<i>Halalaimus</i> aff. <i>longinquus</i> Bussau, 1993				1		
<i>Halalaimus</i> aff. <i>oblongus</i> Bussau, 1993		1				
<i>Halalaimus</i> aff. <i>tenuicapitatus</i> Filipjev, 1946	1					
<i>Halalaimus</i> aff. <i>turbidus</i> Vitiello, 1970				1		
<i>Halalaimus</i> n. sp. 1	1					
<i>Halalaimus</i> n. sp. 2						1
Total species	18	8	7	12	7	14
Total individuals	35	10	8	23	31	36

negative trend with increasing water depth (e.g. Tittensor et al., 2011), this decrease is less pronounced for the meiofauna (Rex et al., 2006; Wei et al., 2010), hence their numerical dominance in abyssal plains. Nematode densities in this study were comparable to those reported for other abyssal and CCZ seafloor sediments (e.g. Veit-Köhler et al., 2011; Lins et al., 2014; Pape et al., 2017), except for the rather low numbers in the APEI-3 area. Meiofaunal abundance, and that of nematodes in particular, is known to vary with the available food concentrations in the sediment (generally assessed by means of pigment concentrations) as well as with other environmental characteristics (Moens et al., 2013; Lins et al., 2014). Similarly, several environmental variables in this study were highly correlated with faunal densities, most notably nodule density, water depth and clay content. Contrary to what has been observed for other deep-sea regions worldwide (e.g. Ramirez-Llodra et al., 2010; Pape et al., 2013; Lins et al., 2014), the importance of phytodetritus-derived food at the seafloor (approximated by CPE and TOC values; Table 1) was not reflected directly in nematode standing stock and community composition, although their values varied considerably among the different areas of the CCZ (Table 1; Fig. 2). Only the relative importance of the genus *Acantho-*

laimus showed a positive relationship with CPE concentrations among the various locations. The productivity gradient (POC flux; Vanreusel et al., 2016) in the area was therefore reflected mainly in the sediment abiotic variables and only to a lesser extent in the faunal parameters. Given that the entire CCZ is classified as oligotrophic (Volz et al., 2018), concentrations of phytodetritus-derived pigments might have been too low to result in any obvious explanatory relationship with faunal variables.

One of the parameters that did influence faunal densities was nodule density of the different areas. Previous work on benthic fauna of different size classes showed the importance of nodules in structuring communities (Miljutina et al., 2010; Radziejewska, 2014; Vanreusel et al., 2016). Judging from the results of this study, high nodule densities were associated with a lower meiofaunal standing stock (Tables 1 and 3). This may seem logical, since an increase in nodule density leads to a decrease in the volume of fine-grained sediments which constitute the biotope of meiofauna and nematodes; however, it might also be the result of sediment volume differences due to the presence of nodules in the sampling cores. Nevertheless, a similar negative correlation between nodule density and nematode counts was observed at

a smaller scale (Miljutina et al., 2010), where nodule-bearing sediments in the IFREMER license area displayed lower average nematode abundances than nodule-free sites within the same area. Similarly in our study, high-nodule sediments of GSR, IFREMER and BGR_PA (see Table 1) had lower nematode densities than low-nodule IOM and BGR_RA. The APEI-3 was exceptional, as it was characterized by low nematode abundances despite low nodule densities. This area differed significantly from the rest in additional aspects such as lower CPE and TOC values and finer sediment, with an increase in the clay fraction ($< 4 \mu\text{m}$; Table 1; Fig. 2). This was corroborated by a more detailed assessment of CCZ sediments, which showed that biogeochemical features of the APEI-3 area differed considerably from other areas (Volz et al., 2018). Therefore, a different sedimentation rate resulting in finer sediments with lower POC input (Volz et al., 2018) may be the justification for the deprived nematode numbers at the APEI-3 stations rather than the effect of nodule densities.

As nodules are confined to the upper sediment layer (Radziejewska, 2014; Petersen et al., 2016), where the majority of the meiofauna also reside, their removal through mining activities will induce drastic changes to these small-sized biota (Thiel, 2001; Miljutin et al., 2015). Inevitably, the ploughing and removal of surface sediments associated with the mining process will lead to an initial decrease in densities (Shirayama et al., 2001; Radziejewska, 2014; Jones et al., 2017). Yet the ratio of nodule presence to bare sediment availability is not the only structuring factor of nematode communities, based on the results of this study. Rather, a complex interplay of several factors (here: particle size, water depth and nodule density) ultimately defines nematode densities. Other, more indirect impacts of deep-sea mining activities (see Thiel, 2001; Radziejewska, 2014; Gollner et al., 2017, and references therein) might therefore have an even larger impact on meiofauna numbers through their interference with the sediment biogeochemistry. Specifically, sediment blanketing and displacement which will accompany large-scale mining operations will likely impose considerable disturbances (Radziejewska, 2014). As shown before for the drilling industry, discharge of deep-sea muds can seriously impact meiofaunal communities, both in terms of abundance as well as community composition (Netto et al., 2009). In addition to chemical effects, physical alteration of the habitat (i.e. change in sediment granulometry and burying of organisms) was primarily responsible for the lack of recovery in communities 1 year after the disturbance took place (Netto et al., 2009). Also in situ disposal and deposition of nodule debris onto disturbed seafloor sediments can result in altered behaviour of small-sized meiofauna communities, as demonstrated in a small-scale experiment in the Peru Basin (characterized by similar presence of abyssal nodules; see Mevenkamp et al., 2019). Over an incubation period of 11 d, several meiofaunal taxa, including nematodes, changed their vertical position in the sediment after the addi-

tion of a top layer with crushed nodule particles (Mevenkamp et al., 2019). Finally, sediment compaction by vehicle tracks might also change sediment characteristics (e.g. porewater geochemistry), resulting in the inability of some meiofauna to penetrate these compacted sediments (i.e. explanation why densities were still deprived after 26 years in Miljutin et al., 2011). Moreover, the refractory carbon pool may be removed by mining and prevent recolonization.

It has been shown by various studies within the CCZ that nematode diversity at the genus and morphospecies level is generally high at a local scale (see Radziejewska, 2014, and references therein). Additionally, dominance of genera is usually limited, and therefore evenness is high (Radziejewska, 2014). With a total of 156 genera reported in this study, genus diversity was indeed substantial on a regional scale, and only few genera occurred in higher numbers (i.e. relative abundance $> 5\%$; Tables 5 and 6). Overall, diversity was similar for the different areas, but evenness was lower in the BGR stations (Table 5). This could be attributed to the presence of two highly dominant genera, *Acantholaimus* ($> 17\%$) and *Monhystrella* ($> 21\%$; Table 6), as compared to only *Monhystrella* in the other areas ($> 25\%$; Table 6). Nematode communities generally consisted of typical deep-sea families and genera such as *Monhystrella* (and Monhysteridae in general), *Acantholaimus* and *Halalaimus*, all of which have been reported from previous CCZ samplings (Lambhead et al., 2003; Miljutina et al., 2010; Miljutin et al., 2011, 2015; Radziejewska, 2014; Singh et al., 2016; Pape et al., 2017; see Table 6) and other abyssal areas worldwide (Vanreusel et al., 2010; Lins et al., 2014; Singh et al., 2016). Differences between results described here and previous CCZ studies mainly lie in their relative abundances. For instance, higher contributions of the genus *Theristus* (ranging between 3.6% and 13%) were reported (Miljutina et al., 2010; Miljutin et al., 2015) for the French license area, while here it was subdominant across the CCZ (max 4.4%; Table 6). As was already observed before for the CCZ region, faunal differences among samples in nodule areas are typically driven by a high contribution of rare species (defined as species with few individuals and/or a restricted geographical distribution; see definition reported in Cao et al., 2001, and references therein; Gollner et al., 2017). Also in this study, high relative proportions of rare genera ($\sim 44\%$ occurring in only 1 site) and species ($\sim 63\%$ if BGR_PA and BGR_RA are considered as one area) were recovered in the different sampling areas. Similar patterns could be observed for the morphospecies of *Halalaimus*. A total of 24 morphospecies of *Halalaimus* were identified in this study for the entire CCZ. This number is higher than the 11 and 13 morphotypes reported by Lambhead et al. (2003) and Miljutina et al. (2010), respectively, but comparable to 25 morphotypes reported for the Peru Basin under relatively similar conditions in terms of depth and nodule presence (Bussau, 1993). Some of the morphospecies were also described in the study by Pape et al. (2017) for the GSR license area, indicating

their consistent presence over time. As for the genera, most of these species were found in only one or two areas in low numbers (although not all *Halalaimus* individuals could be assigned to a species level).

Our findings in terms of genus and species distribution have important implications for future mining scenarios and suggest that in the event of large-scale mining efforts, rare genera and species are likely to disappear completely from targeted areas. It is thus crucial to know what the impact of such a loss of species will be in a deep-sea context, especially in terms of ecosystem functioning (see also Danovaro et al., 2008; Yasuhara et al., 2016). It may be that these effects are obscured at first but become more apparent over time (as demonstrated in various habitats; see Gazcon et al., 2015, for examples), depending on the redundancy of the system. However, knowledge on the redundancy of the system is particularly limited in the abyss (Radziejewska, 2014), and future studies should therefore aim to elucidate the particular roles of rare deep-sea species. Nevertheless, as was shown by Danovaro et al. (2008), loss in biodiversity will almost automatically translate into a loss in functions for the small-sized meiofauna. Additionally, the effect of rare species loss could be transferred to other levels of the trophic chain and, as was shown in a rocky intertidal study (Bracken and Low, 2012), have a proportionally larger impact on the consumers than an equal loss of dominant species would have. Finally, in terms of genetic diversity, loss of species in mined areas might result in diminished population exchange and genetic variation in the areas within and around mining sites, as was shown for massive sulfides (Boschen et al., 2016; Gollner et al., 2017). Despite the risk for a substantial loss of taxa after mining, disturbance can also be a prerequisite for some species to persist in deep-sea sediments, as these may benefit from the availability of space left behind by the removal of other, more competitive or dominant taxa (see e.g. Gallucci et al., 2008). Regardless of the extent of species loss in case of deep-sea mining, the recovery of communities in both numbers and diversity will largely depend on the provision of food and the presence of a pool of colonizers in the vicinity of the disturbed areas (Radziejewska, 2014) both within single license areas (important for local dynamics) as well as across the larger CCZ (important for regional species dynamics). Low connectivity will result in a slow recovery potential of species (Gollner et al., 2017), as unmined sites within the license areas or the envisioned source areas (APEIs) will not be able to replenish the standing stocks of lost taxa. Again, given that many genera and *Halalaimus* species occurred in low numbers and with a limited geographic spread, source areas might fall short of their role in population replenishment. Although the number of rare taxa is a potential overestimation and would likely decrease with increasing sampling effort in the CCZ, it will be of utmost importance to monitor post-impact communities to identify recovery over space and time. Results from previous work in different benthic environments demonstrated

that recolonization or colonization by nematodes after disturbance events can take up to several decades (e.g. after iceberg scouring in Antarctic waters; Lee et al., 2001). Within the CCZ specifically, the recovery of nematode communities in a disturbance track in the IFREMER license area was found to be rather slow (Miljutin et al., 2011). Whereas densities are generally known to recover faster to their pre-disturbance conditions (see Radziejewska, 2014; Jones et al., 2017, and references therein), this is not necessarily true for community composition (Miljutin et al., 2011). Although some genera have been shown to actively colonize disturbed sediments (Gallucci et al., 2008), most genera are considered to have limited dispersal capacities (Derycke et al., 2013; Moens et al., 2013). Especially at larger geographic scales, it seems that at least some species are limited in their distribution (Derycke et al., 2013; Hauquier et al., 2017a). In combination with the lack of a pelagic larval stage in nematodes, this further reduces their capacity for quick community recovery after disturbance.

Even when nematodes are able to colonize or recolonize disturbed areas, the outcomes are generally very different due to the different environmental settings and processes acting on them. This effectively hampers our ability to predict responses of nematode assemblages to large-scale mining events. The lack of a consensus is demonstrated by the differing outcomes of several artificial disturbance studies carried out since the 1970s in a nodule context (see Jones et al., 2017, and references therein). For instance, in the IOM BIE experiment, one particular group of nematodes (Desmoscolecids) was responsible for a peak in post-impact abundances (Radziejewska, 2002), while in another CCZ study (Miljutin et al., 2011), this was attributed to the genera *Thalassomonyx* and *Oncholaimus*. Another drawback for future predictions is the fact that most of these studies looked at recovery processes at relatively small scales and are therefore not necessarily representative of the large-scale impact of mining operations at hand (Gollner et al., 2017). As far as can be predicted at this moment, the extraction of the nodules from the seabed will impose a disturbance to all biota at a scale that ranges from tens to hundreds of square kilometres (Glover and Smith, 2003). The effects of the sediment plumes associated with mining especially are a major challenge given that there is a lot of uncertainty on the spatial extent of this type of impact (Radziejewska, 2014; Gollner et al., 2017). Previous experiments mimicking mining effects and subsequent plume dispersal on a smaller scale have indicated that travelling distances of the bottom plumes ranged from a few hundreds of metres to several kilometres away (Sharma et al., 2001; Peukert et al., 2018).

As was already stated in previous works (e.g. Vanreusel et al., 2016; Gollner et al., 2017), in order to preserve current community structure, unmined areas should be as similar as possible to the provisioned mining sites (Boetius and Haeckel, 2018) and function as a source of recruitment after mining (Kaiser et al., 2017). This study therefore also fo-

cused on the APEI-3, in the northwest of the CCZ. While these areas were originally selected based on environmental proxies, our data show that the APEI-3 at least exhibits distinct biotic and abiotic characteristics compared to the other sampled areas (see also Volz et al., 2018), as densities and community composition were significantly different (i.e. low abundances despite low nodule densities and a higher contribution and species number of *Halalaimus*; Tables 1, 3 and 6; Fig. 3). While information for the other APEIs is scarce, especially in comparison to the license areas, data from this study suggest that the APEI-3 is ill-suited as a representative source area for the recovery of the mined communities. Additionally, given the large geographic distance between the APEI-3 and the license areas, exchange of individuals, and hence genetic material, among remaining populations after mining may be hampered. In the case of nematodes, which are known to have limited dispersal capacity (see earlier), a network of APEIs that are randomly spread across the CCZ might have been more beneficial (as originally planned; see Kaiser et al., 2017, and references therein). Therefore, as was suggested by Vanreusel et al. (2016) we strongly advocate for the incorporation of no-mining sites within each of the license areas in order to buffer the inevitable loss of biodiversity.

Data availability. Datasets supporting this paper can be accessed online through the PANGAEA database at <https://doi.org/10.1594/PANGAEA.873272> (Hauquier et al., 2017b), <https://doi.org/10.1594/PANGAEA.873274> (Hauquier et al., 2017c) and <https://doi.org/10.1594/PANGAEA.903563> (Hauquier and Vanreusel, 2019).

Author contributions. LM, AV and PM participated in expedition SO239 and collected the samples. FH, LM, PM and AV discussed sampling strategy and analyses to be performed. FH, TN and GE analysed the samples and performed the identifications. FH and AV executed statistical data analyses, with further contributions of LM and PM. All authors contributed to the writing of this paper.

Competing interests. The authors declare that they have no conflict of interest.

Special issue statement. This article is part of the special issue “Assessing environmental impacts of deep-sea mining – revisiting decade-old benthic disturbances in Pacific nodule areas”. It is not associated with a conference.

Acknowledgements. The authors wish to thank the captain, crew, chief scientist and scientific community of expedition SO239 on-board RV *Sonne* for their help and support in sample acquisition. Felix Janssen from MPI Bremen/AWI and co-workers are greatly acknowledged for the analyses of pigment data. Bart Beuselinck

and Niels Viaeue from UGent are thanked for their assistance in the analyses of abiotic parameters and extraction of meiofauna samples. Annick Van Kenhove and Guy De Smet from UGent helped in picking of nematodes and making of slides. The SO239 cruise with the RV *Sonne* was financed by the German Federal Ministry of Education and Research BMBF (grant no. 03F0707A-G) as part of the JPI-Oceans pilot action MiningImpact – “Ecological Aspects of Deep-Sea Mining”. Additional funding was available through the Department of Economy, Science and Innovation of Flanders under the framework of JPI Oceans (grant no. 1242114N). Data are available through the online PANGAEA portal.

Financial support. This research has been supported by the Vlaamse Overheid – Departement Economie, Wetenschap & Innovatie (grant no. 1242114N) and the Bundesministerium für Bildung und Forschung (grant no. 03F0707A-G).

Review statement. This paper was edited by Tina Treude and reviewed by two anonymous referees.

References

- Anderson, M. J., Gorley, R. N., and Clarke, K. R.: PERMANOVA+ for PRIMER: guide for software and statistical methods, Primer-E Ltd, Plymouth, 2008.
- Bezerra, T. N., Decraemer, W., Eisendle-Flöckner, U., Hodda, M., Holovachov, O., Leduc, D., Miljutin, D., Mokievsky, V., Peña Santiago, R., Sharma, J., Smol, N., Tchesunov, A., Venekey, V., Zeng, Z., and Vanreusel, A.: Nemys: World Database of Nematodes, edited by: Bezerra, T. N., Ghent University, available at: <http://nemys.ugent.be/> (last access: 6 September 2019), 2018.
- Boetius, A. and Haeckel, M.: Mind the seafloor, *Science*, 359, 34, <https://doi.org/10.1126/science.aap7301>, 2018.
- Boschen, R. E., Collins, P. C., Tunnicliffe, V., Carlsson, J., Gardner, J. P. A., Lowe, J., McCrone, A., Metaxas, A., Sinniger, F., and Swadling, A.: A primer for use of genetic tools in selecting and testing the suitability of set-aside sites protected from deep-sea seafloor massive sulfide mining activities, *Ocean Coast. Manage.*, 122, 37–48, <https://doi.org/10.1016/j.ocecoaman.2016.01.007>, 2016.
- Bracken, M. and Low, N.: Realistic losses of rare species disproportionately impact higher trophic levels, *Ecol. Lett.*, 15, 461–467, 2012.
- Bussau, C.: Taxonomische und ökologische Untersuchungen an Nematoden des Peru-Beckens, PhD, Christian-Albrechts-Universität zu Kiel, Germany, 1993.
- Cao, Y., Larsen, D., and Thorne, R.: Rare species in multivariate analysis for bioassessment: some considerations, *J. N. Am. Benthol. Soc.*, 20, 144–153, 2001.
- Clarke, K. and Gorley, R.: PRIMER v6: User manual/tutorial, PRIMER-E, edited by: Plymouth, Plymouth, UK, 2006.
- Danovaro, R., Gambi, C., Dell’Anno, A., Corinaldesi, C., Fraschetti, S., Vanreusel, A., Vincx, M., and Gooday, A. J.: Exponential decline of deep-sea ecosystem functioning linked to benthic biodiversity loss, *Curr. Biol.*, 18, 1–8, <https://doi.org/10.1016/j.cub.2007.11.056>, 2008.

- De Grisse, A.: Redescription ou modification de quelques techniques utilisées dans l'étude des nematodes phytoparasitaires, *Meded. Rijksfakulteit Landbouwwetenschappen Gent*, 34, 351–369, 1969.
- Derycke, S., Backeljau, T., and Moens, T.: Dispersal and gene flow in free-living marine nematodes, *Front. Zool.*, 10, 1, <https://doi.org/10.1186/1742-9994-10-1>, 2013.
- Fortuner, R.: Ratios and indexes in nematode taxonomy, *Nematologica*, 36, 205–216, 1990.
- Gallucci, F., Moens, T., Vanreusel, A., and Fonseca, G.: Active colonisation of disturbed sediments by deep-sea nematodes: evidence for the patch mosaic model, *Mar. Ecol.-Prog. Ser.*, 367, 173–183, 2008.
- Gazcon, C., Brooks, T., Contreras-MacBeath, T., Heard, N., Konstant, W., Lamoreux, J., Launay, F., Maunder, M., Mittermeier, R., Molur, S., Al Mubarak, R., Parr, M., Rhodin, A., Rylands, A., Soorae, P., Sanderson, J., and Vié, J.-C.: The Importance and Benefits of Species, *Curr. Biol.*, 25, R431–R438, <https://doi.org/10.1016/j.cub.2015.03.041>, 2015.
- Glover, A. G. and Smith, C. R.: The deep-sea floor ecosystem: current status and prospects of anthropogenic change by the year 2025, *Environ. Conserv.*, 30, 219–241, <https://doi.org/10.1017/S0376892903000225>, 2003.
- Gollner, S., Kaiser, S., Menzel, L., Jones, D. O. B., Brown, A., Mestre, N. C., van Oevelen, D., Menot, L., Colaço, A., Canals, M., Cuvelier, D., Durden, J. M., Gebruk, A., Egho, G. A., Haeckel, M., Marcon, Y., Mevenkamp, L., Morato, T., Pham, C. K., Purser, A., Sanchez-Vidal, A., Vanreusel, A., Vink, A., and Martinez Arbizu, P.: Resilience of benthic deep-sea fauna to mining activities, *Mar. Environ. Res.*, 129, 76–101, <https://doi.org/10.1016/j.marenvres.2017.04.010>, 2017.
- Halbach, P. and Fellerer, R.: The metallic minerals of the Pacific Seafloor, *GeoJ.*, 4, 407–421, <https://doi.org/10.1007/bf01795925>, 1980.
- Hauquier, F. and Vanreusel, A.: Nematode absolute genus abundances from multicorer samples during SONNE cruise SO239 in the Clarion Clipperton Fracture Zone (northeast Pacific), *PANGAEA*, <https://doi.pangaea.de/10.1594/PANGAEA.903563>, 2019.
- Hauquier, F., Leliaert, F., Rigaux, A., Derycke, S., and Vanreusel, A.: Distinct genetic differentiation and species diversification within two marine nematodes with different habitat preference in Antarctic sediments, *BMC Evol. Biol.*, 17, 120, <https://doi.org/10.1186/s12862-017-0968-1>, 2017a.
- Hauquier, F., Pape, E., and Vanreusel, A.: Meiofauna abundances from multicorer samples during SONNE cruise SO239. *Mariene Biologie*, Universiteit Gent, PANGAEA, <https://doi.org/10.1594/PANGAEA.873272>, 2017b.
- Hauquier, F., Macheriotou, L., Vanreusel, A., Janssen, F., and Boetius, A.: Sedimentary parameters from multicorer and ROV pushcore samples during SONNE cruise SO239. *Mariene Biologie*, Universiteit Gent, PANGAEA, <https://doi.org/10.1594/PANGAEA.873274>, 2017c.
- Heip, C., Vincx, M., and Vranken, G.: The ecology of marine nematodes, *Oceanogr. Mar. Biol.*, 23, 399–489, 1985.
- Hessler, R. R. and Sanders, H. L.: Faunal diversity in the deep-sea, *Deep-Sea Res.*, 14, 65–78, 1967.
- Higgins, R. and Thiel, H.: Introduction to the study of Meiofauna, Smithsonian Institution Press, London, 1988.
- Hill, M.: Diversity and evenness: a unifying notation and its consequences, *Ecology*, 54, 427–432, 1973.
- Jones, D. O. B., Kaiser, S., Sweetman, A. K., Smith, C. R., Menot, L., Vink, A., Trueblood, D., Greinert, J., Billett, D. S. M., Arbizu, P. M., Radziejewska, T., Singh, R., Ingoles, B., Stratmann, T., Simon-Lledó, E., Durden, J. M., and Clark, M. R.: Biological responses to disturbance from simulated deep-sea polymetallic nodule mining, *PLoS ONE*, 12, e0171750, <https://doi.org/10.1371/journal.pone.0171750>, 2017.
- Jost, L.: Entropy and diversity, *Oikos*, 113, 363–375, <https://doi.org/10.1111/j.2006.0030-1299.14714.x>, 2006.
- Kaiser, S., Smith, C., and Martinez Arbizu, P.: Editorial: Biodiversity of the Clarion Clipperton Fracture Zone, *Marine Biodivers.*, 47, 259–264, <https://doi.org/10.1007/s12526-017-0733-0>, 2017.
- Lambshead, P. J. D., Brown, C. J., Ferrero, T. J., Hawkins, L. E., Smith, C. R., and Mitchell, N. J.: Biodiversity of nematode assemblages from the region of the Clarion-Clipperton Fracture Zone, an area of commercial mining interest, *BMC Ecol.*, 3, 1, <https://doi.org/10.1186/1472-6785-3-1>, 2003.
- Lee, H., Vanhove, S., Peck, L., and Vincx, M.: Recolonisation of meiofauna after catastrophic iceberg scouring in shallow Antarctic sediments, *Polar Biol.*, 24, 918–925, 2001.
- Lessin, G., Artioli, Y., Almroth-Rosell, E., Blackford, J. C., Dale, A. W., Glud, R. N., Middelburg, J. J., Pastres, R., Queirós, A. M., Rabouille, C., Regnier, P., Soetaert, K., Solidoro, C., Stephens, N., and Yakushev, E.: Modelling Marine Sediment Biogeochemistry: Current Knowledge Gaps, Challenges, and Some Methodological Advice for Advancement, *Front. Mar. Sci.*, 5, 19, <https://doi.org/10.3389/fmars.2018.00019>, 2018.
- Levin, L. A., Etter, R. J., Rex, M. A., Gooday, A. J., Smith, C. R., Pineda, J., Stuart, C. T., Hessler, R. R., and Pawson, D.: Environmental Influences on Regional Deep-Sea Species Diversity, *Annu. Rev. Ecol. Syst.*, 32, 51–93, <https://doi.org/10.1146/annurev.ecolsys.32.081501.114002>, 2001.
- Lins, L., Guilini, K., Veit-Köhler, G., Hauquier, F., Alves, R. M. d. S., Esteves, A. M., and Vanreusel, A.: The link between meiofauna and surface productivity in the Southern Ocean, *Deep-Sea Res. Pt. II*, 108, 60–68, 2014.
- Lodge, M., Johnson, D., Le Gurun, G., Wengler, M., Weaver, P., and Gunn, V.: Seabed mining: International Seabed Authority environmental management plan for the Clarion-Clipperton Zone. A partnership approach, *Mar. Policy*, 49, 66–72, <https://doi.org/10.1016/j.marpol.2014.04.006>, 2014.
- Mahatma, R.: Meiofauna communities of the Pacific Nodule Province: abundance, diversity and community structure, University of Oldenburg, Germany, 2009.
- Martínez Arbizu, P. and Haeckel, M.: RV SONNE Fahrtbericht/Cruise Report SO239: EcoResponse Assessing the Ecology, Connectivity and Resilience of Polymetallic Nodule Field Systems, Balboa (Panama) – Manzanillo (Mexico), 11.03.–30.04.2015, Kiel, Germany, Cruise Report https://doi.org/10.3289/GEOMAR_REP_NS_25_2015, 2015.
- McClain, C. R. and Schlacher, T. A.: On some hypotheses of diversity of animal life at great depths on the sea floor, *Mar. Ecol.*, 36, 849–872, <https://doi.org/10.1111/maec.12288>, 2015.
- McClain, C. R., Allen, A. P., Tittensor, D. P., and Rex, M. A.: Energetics of life on the deep seafloor, *P. Natl. Acad. Sci. USA*, 109, 15366–15371, <https://doi.org/10.1073/pnas.1208976109>, 2012.

- Mevenkamp, L., Guilini, K., Boetius, A., De Grave, J., Laforce, B., Vandenberghe, D., Vincze, L., and Vanreusel, A.: Responses of an abyssal meiobenthic community to short-term burial with crushed nodule particles in the south-east Pacific, *Biogeosciences*, 16, 2329–2341, <https://doi.org/10.5194/bg-16-2329-2019>, 2019.
- Mewes, K., Mogollón, J. M., Picard, A., Rühlemann, C., Kuhn, T., Nöthen, K., and Kasten, S.: Impact of depositional and biogeochemical processes on small scale variations in nodule abundance in the Clarion-Clipperton Fracture Zone, *Deep-Sea Res. Pt. I*, 91, 125–141, <https://doi.org/10.1016/j.dsr.2014.06.001>, 2014.
- Miljutin, D., Miljutina, M., Arbizu, P. M., and Galéron, J.: Deep-sea nematode assemblage has not recovered 26 years after experimental mining of polymetallic nodules (Clarion-Clipperton Fracture Zone, Tropical Eastern Pacific), *Deep-Sea Res. Pt. I*, 58, 885–897, <https://doi.org/10.1016/j.dsr.2011.06.003>, 2011.
- Miljutin, D., Miljutina, M., and Messié, M.: Changes in abundance and community structure of nematodes from the abyssal polymetallic nodule field, Tropical Northeast Pacific, *Deep-Sea Res. Pt. I*, 106, 126–135, <https://doi.org/10.1016/j.dsr.2015.10.009>, 2015.
- Miljutina, M. A., Miljutin, D. M., Mahatma, R., and Galéron, J.: Deep-sea nematode assemblages of the Clarion-Clipperton Nodule Province (Tropical North-Eastern Pacific), *Mar. Biodivers.*, 40, 1–15, <https://doi.org/10.1007/s12526-009-0029-0>, 2010.
- Moens, T., Braeckman, U., Derycke, S., Fonseca, G., Gallucci, F., Gingold, R., Guilini, K., Ingels, J., Leduc, D., Vanaverbeke, J., Van Colen, C., Vanreusel, A., and Vincx, M.: Ecology of free-living marine nematodes, in: *Handbook of Zoology: Gastrotricha, Cycloneuralia and Gnathifera*, Vol. 2: Nematoda, edited by: Schmidt-Rhaesa, A., Walter de Gruyter GmbH, Berlin/Boston, 109–152, 2013.
- Netto, S., Gallucci, F., and Fonseca, G.: Deep-sea meiofauna response to synthetic-based drilling mud discharge off SE Brazil, *Deep-Sea Res. Pt. II*, 56, 41–49, 2009.
- Oksanen, F. J., Blanchet, F. G., Friendly, M., Kindt, R., Legendre, P., McGlinn, D., Minchin, P., O'Hara, R. B., Simpson, G., Solyomos, P., Stevens, M. H. H., Szoecs, E., and Wagner, H.: *vegan: Community Ecology Package*, R package version 2.4-4, available at: <https://CRAN.R-project.org/package=vegan> (last access: 6 September 2019), 2017.
- Pape, E., Jones, D. O. B., Manini, E., Bezerra, T. N., and Vanreusel, A.: Benthic-Pelagic Coupling: Effects on Nematode Communities along Southern European Continental Margins, *PLoS ONE*, 8, e59954, <https://doi.org/10.1371/journal.pone.0059954>, 2013.
- Pape, E., Bezerra, T. N., Hauquier, F., and Vanreusel, A.: Limited Spatial and Temporal Variability in Meiofauna and Nematode Communities at Distant but Environmentally Similar Sites in an Area of Interest for Deep-Sea Mining, *Front. Mar. Sci.*, 4, 205, <https://doi.org/10.3389/fmars.2017.00205>, 2017.
- Petersen, S., Krätschell, A., Augustin, N., Jamieson, J., Hein, J. R., and Hannington, M. D.: News from the seabed: Geological characteristics and resource potential of deep-sea mineral resources, *Mar. Policy*, 70, 175–187, <https://doi.org/10.1016/j.marpol.2016.03.012>, 2016.
- Peukert, A., Schoening, T., Alevizos, E., Köser, K., Kwasnitschka, T., and Greinert, J.: Understanding Mn-nodule distribution and evaluation of related deep-sea mining impacts using AUV-based hydroacoustic and optical data, *Biogeosciences*, 15, 2525–2549, <https://doi.org/10.5194/bg-15-2525-2018>, 2018.
- Platt, H. M. and Warwick, R. M.: *Freeliving marine nematodes. Part I: British enoplids. Pictorial key to world genera and notes for the identification of British species*, *Synopses of the British Fauna (New Series)*, edited by: Kermack, D. M. and Barnes, R. S. K., Cambridge University Press, Cambridge, UK, 307 pp., 1983.
- Platt, H. and Warwick, R.: *Freeliving marine nematodes. Part II: British chromadorids. Pictorial key to world genera and notes for the identification of British species*, *Synopses of the British Fauna (New Series)*, edited by: Kermack, D. M. and Barnes, R. S. K., Cambridge University Press, Cambridge, UK, 502 pp., 1988.
- Radziejewska, T.: Responses of Deep-Sea Meiobenthic Communities to Sediment Disturbance Simulating Effects of Polymetallic Nodule Mining, *International Rev. Hydrobiol.*, 87, 457–477, [https://doi.org/10.1002/1522-2632\(200207\)87:4<457::aid-iroh457>3.0.co;2-3](https://doi.org/10.1002/1522-2632(200207)87:4<457::aid-iroh457>3.0.co;2-3), 2002.
- Radziejewska, T.: *Meiobenthos in the Sub-equatorial Pacific Abyss*, *SpringerBriefs in Earth System Sciences*, Springer Berlin Heidelberg, Berlin, Heidelberg, 2014.
- Ramirez-Llodra, E., Brandt, A., Danovaro, R., De Mol, B., Escobar, E., German, C. R., Levin, L. A., Martinez Arbizu, P., Menot, L., Buhl-Mortensen, P., Narayanaswamy, B. E., Smith, C. R., Tittensor, D. P., Tyler, P. A., Vanreusel, A., and Vecchione, M.: Deep, diverse and definitely different: unique attributes of the world's largest ecosystem, *Biogeosciences*, 7, 2851–2899, <https://doi.org/10.5194/bg-7-2851-2010>, 2010.
- R Core Team: *R: A language and environment for statistical computing*, R Foundation for Statistical Computing, Vienna, Austria, 2013.
- Rex, M. A., Etter, R. J., Morris, J. S., Crouse, J., McClain, C. R., Johnson, N. A., Stuart, C. T., Deming, J. W., Thies, R., and Avery, R.: Global bathymetric patterns of standing stock and body size in the deep-sea benthos, *Mar. Ecol.-Prog. Ser.*, 317, 1–8, 2006.
- Sebastian, S., Raes, M., De Mesel, I., and Vanreusel, A.: Comparison of the nematode fauna from the Weddell Sea Abyssal Plain with two North Atlantic abyssal sites, *Deep-Sea Res. Pt. II*, 54, 1727–1736, 2007.
- Seinhorst, J.: A rapid method for the transfer of nematodes from fixative to anhydrous glycerine, *Nematologica*, 4, 67–69, 1959.
- Sharma, R., Nath, B., Parthiban, G., and Sankar, S.: Sediment redistribution during simulated benthic disturbance and its implications on deep seabed mining, *Deep-Sea Res. Pt. II*, 48, 3363–3380, 2001.
- Shirayama, Y., Fukushima, T., Matsu, T., and Kuboki, E.: The Responses Of Deep-Sea Benthic Organisms to Experimental Removal Of the Surface Sediment, *International Society of Off-shore and Polar Engineers C1 – ISOPE*, 2001.
- Singh, R., Miljutin, D. M., Vanreusel, A., Radziejewska, T., Miljutina, M. M., Tchesunov, A., Bussau, C., Galtsova, V., and Martinez Arbizu, P.: Nematode communities inhabiting the soft deep-sea sediment in polymetallic nodule fields: do they differ from those in the nodule-free abyssal areas?, *Mar. Biol. Res.*, 12, 345–359, <https://doi.org/10.1080/17451000.2016.1148822>, 2016.
- Sweetman, A., Thurber, A., Smith, C., Levin, L., Mora, C., Wei, C., Gooday, A., Jones, D., Rex, M., Yasuhara, M., Ingels, J., Ruhl, H., Frieder, C., Danovaro, R., Würzberg, L., Baco, A., Grube, B., Pasulka, A., Meyer, K., Dunlop, K., Henry, L.-A., and

- Roberts, J.: Major impacts of climate change on deep-sea benthic ecosystems, *Elementa Science of the Anthropocene*, 5, p. 4, <https://doi.org/10.1525/elementa.203>, 2017.
- Thiel, H.: Evaluation of the environmental consequences of polymetallic nodule mining based on the results of the TUSCH Research Association, *Deep-Sea Res. Pt. II*, 48, 3433–3452, [https://doi.org/10.1016/S0967-0645\(01\)00051-0](https://doi.org/10.1016/S0967-0645(01)00051-0), 2001.
- Tittensor, D. P., Rex, M. A., Stuart, C. T., McClain, C. R., and Smith, C. R.: Species-energy relationships in deep-sea molluscs, *Biol. Letters*, 7, 718–722, <https://doi.org/10.1098/rsbl.2010.1174>, 2011.
- Vanreusel, A., Fonseca, G., Danovaro, R., da Silva, M., Esteves, A., Ferrero, T., Gad, G., Galtsova, V., Gambi, C., da Fonseca Genevois, V., Ingels, J., Ingole, B., Lampadariou, N., Merckx, B., Miljutin, D., Miljutina, M., Muthumbi, A., Netto, S., Portnova, D., Radziejewska, T., Raes, M., Tchesunov, A., Vanaverbeke, J., Van Gaever, S., Venekey, V., Bezerra, T. N., Flint, H., Copley, J., Pape, E., Zeppilli, D., Arbizu Martinez, P., and Galéron, J.: The contribution of deep-sea macrohabitat heterogeneity to global nematode diversity, *Mar. Ecol.*, 31, 6–20, 2010.
- Vanreusel, A., Hilario, A., Ribeiro, P. A., Menot, L., and Arbizu, P. M.: Threatened by mining, polymetallic nodules are required to preserve abyssal epifauna, *Sci. Rep.-UK*, 6, 26808, <https://doi.org/10.1038/srep26808>, 2016.
- Veit-Köhler, G., Guilini, K., Peeken, I., Sachs, O., Sauter, E., and Würzberg, L.: Antarctic deep-sea meiofauna and bacteria react to the deposition of particulate organic matter after a phytoplankton bloom, *Deep-Sea Res. Pt. II*, 58, 1983–1995, 2011.
- Vincx, M.: Meiofauna in marine and freshwater sediments, in: *Methods for the examination of organismal diversity in soils and sediments*, edited by: Hall, G. S., Cab International, Wallingford, 187–195, 1996.
- Volz, J. B., Mogollón, J. M., Geibert, W., Arbizu, P. M., Koschinsky, A., and Kasten, S.: Natural spatial variability of depositional conditions, biogeochemical processes and element fluxes in sediments of the eastern Clarion-Clipperton Zone, Pacific Ocean, *Deep-Sea Res. Pt. I*, 140, 159–172, <https://doi.org/10.1016/j.dsr.2018.08.006>, 2018.
- Warwick, R., Platt, H., and Somerfield, P.: Free-living marine nematodes part III: Monhysterids: pictorial key to world genera and notes for the identification of British species., *Synopses of the British fauna (new series)* 53, Field Studies Council, Shrewsbury, UK, 296 pp., 1998.
- Wei, C.-L., Rowe, G. T., Escobar-Briones, E., Boetius, A., Soltwedel, T., Caley, M. J., Soliman, Y., Huettmann, F., Qu, F., Yu, Z., Pitcher, C. R., Haedrich, R. L., Wicksten, M. K., Rex, M. A., Baguley, J. G., Sharma, J., Danovaro, R., MacDonald, I. R., Nunnally, C. C., Deming, J. W., Montagna, P., Lévesque, M., Weslawski, J. M., Wlodarska-Kowalczyk, M., Ingole, B. S., Bett, B. J., Billett, D. S. M., Yool, A., Bluhm, B. A., Iken, K., and Narayanaswamy, B. E.: Global Patterns and Predictions of Seafloor Biomass Using Random Forests, *PLOS ONE*, 5, e15323, <https://doi.org/10.1371/journal.pone.0015323>, 2010.
- Wentworth, C.: A scale of grade and class terms for clastic sediments, *J. Geol.*, 30, 377–392, 1922.
- Yasuhara, M. and Danovaro, R.: Temperature impacts on deep-sea biodiversity, *Biol. Rev.*, 91, 275–287, <https://doi.org/10.1111/brv.12169>, 2016.
- Yasuhara, M., Doi, H., Wei, C. L., Danovaro, R., and Myhre, S. E.: Biodiversity – ecosystem functioning relationships in long-term time series and palaeoecological records: deep sea as a test bed, *Philos. T. R. Soc. B*, 371, 20150282, <https://doi.org/10.1098/rstb.2015.0282>, 2016.