

***Rissoina parkeri* (Mollusca: Rissooidae): a curious Caribbean species of uncertain status**

Emilio ROLÁN

Museo de Historia Natural, Campus Universitario Sur
15782 Santiago de Compostela, Spain

Harry G. LEE

4132 Ortega Forest Drive
Jacksonville, FL 32210-5813, USA

KEYWORDS. Gastropoda, *Rissoina*, Grand Cayman, Caribbean.

ABSTRACT. Two shells of a *Rissoina* with planktotrophic development found in Grand Cayman, show the problematic of its diagnosis.

Recently malacologist David Kirsh collected two specimens of a *Rissoina* in the waters of Grand Cayman Island. Each shell possess a planktotrophic protoconch (Figs 1-3) which character is not consistent with any known congener from the Caribbean (see Rolán & Fernández-Garcés, 2010).

The shells are coincident in size and sculpture with the figure and description of *Rissoina parkeri*, but have one more teleoconch whorl than the holotype of that species. This can explain why these two shells are a little larger (6.2 and 6.0 mm) than the holotype (4.4 mm).

Olsson & Harbison (1953: 327-328, pl. 48, fig. 5) described the fossil species *Rissoina parkeri* from Shell Creek, Florida, USA. The type specimen is a little immature, with the lip not fully developed. It was deposited in ANSP (19434).

In the searchable database of the Florida Museum of Natural History (FLMNH) there is a shell with Catalog Number 26545 from Glades County, Neogene of Florida.

On the Internet database Malacog 4.1.1 (Rosenberg, 2009) *R. parkeri* is tentatively treated as a synonym of *Rissoina krebsii* (Mörch, 1876). However, on examination of these two species it is evident that the latter (Fig. 5) has more ribs and spiral cords and, most important perhaps, a paucispiral protoconch (Fig. 6). Another similar species is *Rissoina multicostata* (C.B. Adams, 1850) (Figs 7-8), which likewise has many more ribs and cords but a paucispiral protoconch (Fig. 9).

The only problem is that the species *R. parkeri* was considered a fossil while the two Kirsh shells have the appearance of Recent mollusks. Given a protoconch of more than 2 ½ whorls, one must presume that if it is a Recent species it would be

known from other countries in the Caribbean and this is not presently the case.

Another possibility is that this material, despite bearing the appearance of Recent shells, may be from a submarine Quarternary deposit.

ACKNOWLEDGEMENTS

The scanning electron micrographs were made by Jesús Méndez in the Centro de Apoyo Científico y Tecnológico (CACTI) of the University of Vigo. To David Kirsch for the loan of the specimens studied.

REFERENCES

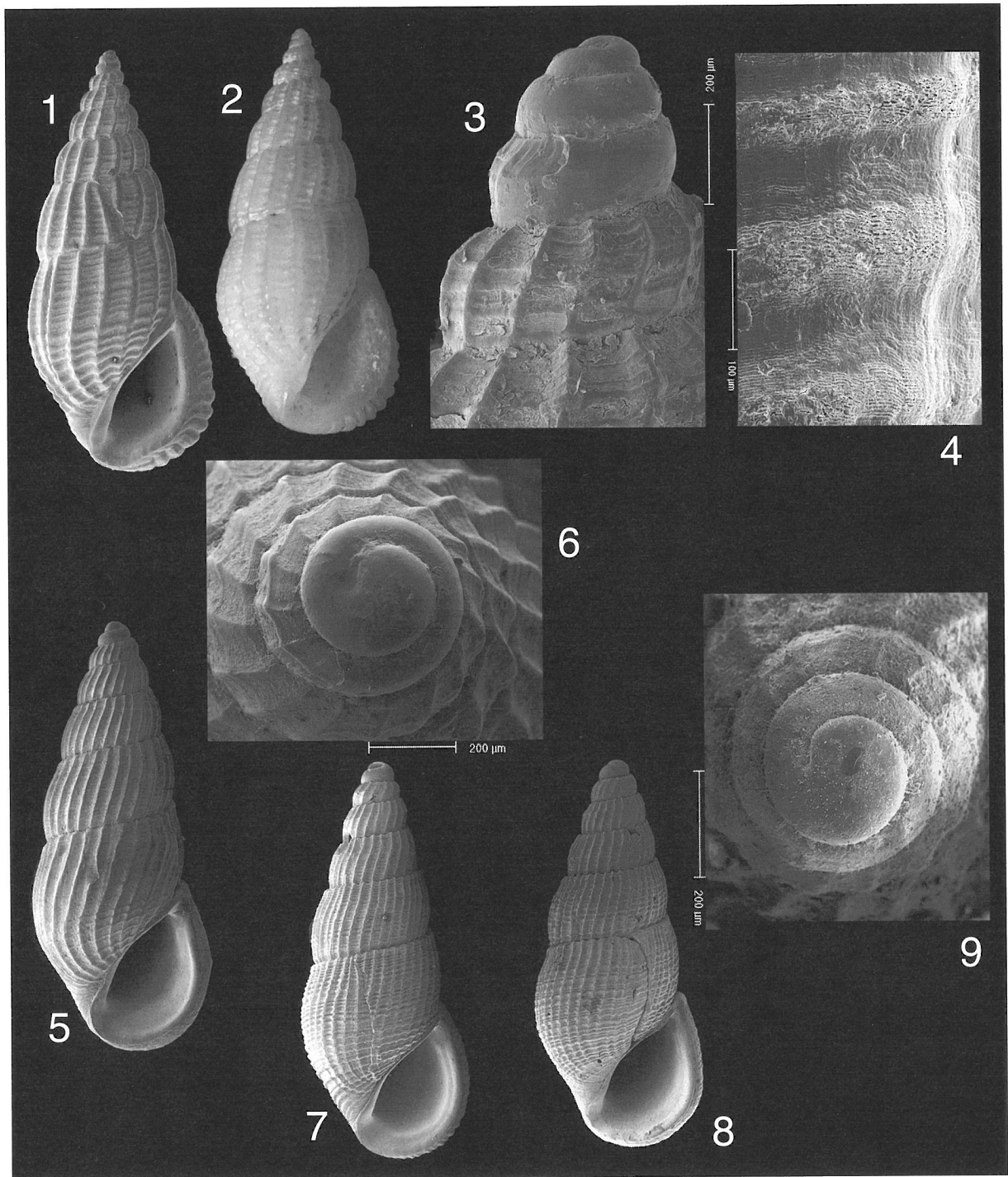
Olsson, A.A. & Harbison, A. 1953. Pliocene Mollusca of Southern Florida, with special reference to those from North Saint Petersburg. *Monographs of the Academy of Natural Sciences of Philadelphia*, 8: vii + 459, 65 pls.

Rolan, E., & Fernández-Garcés, R. 2010. New information on the Caribbean *Rissoina* (Gastropoda, Rissooidae) of the group *R. sagraiana-cancellata*, with the description of a new species. *Iberus*, 28(1): 79-89.

Rosenberg, G. 2009. Malacog 4.1.1: A Database of Western Atlantic Marine Mollusca. [WWW database (version 4.1.1)] URL <http://www.malacog.org/>.

Specifically:

<[43](http://www.malacog.org/search.php?syms=Show+Synonyms&showsynonyms=true&mode=whereseach&wherebit=+and+(+w.originalgenus+%3D+'Rissoina'+or+w.currentfullname+like+'Rissoina+%25'+or+w.originalcombination+like+'Rissoina+%25'+or+w.originalcombination+like+'%25(Rissoina)%25')+></p>
</div>
<div data-bbox=)



Figures 1-9

1-4. *Rissoina parkeri* Olsson & Harbison, 1953

1-2. Shells, 6.2, 6.0 mm, Grand Cayman (coll. D. Kirsch); 3. Protoconch; 4. Microsculpture.

5-6. *Rissoina krebsii* (Mørch, 1876)

5. Shell, 4.6 mm, Cienfuegos, Cuba (MHNS); 6. Protoconch.

7-9. *Rissoina multicosata* (C.B. Adams, 1850)

7-8. Shells, 4.0, 3.7 mm, Cienfuegos, Cuba (MHNS); 9. Protoconch.