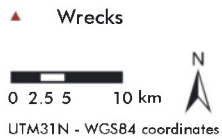
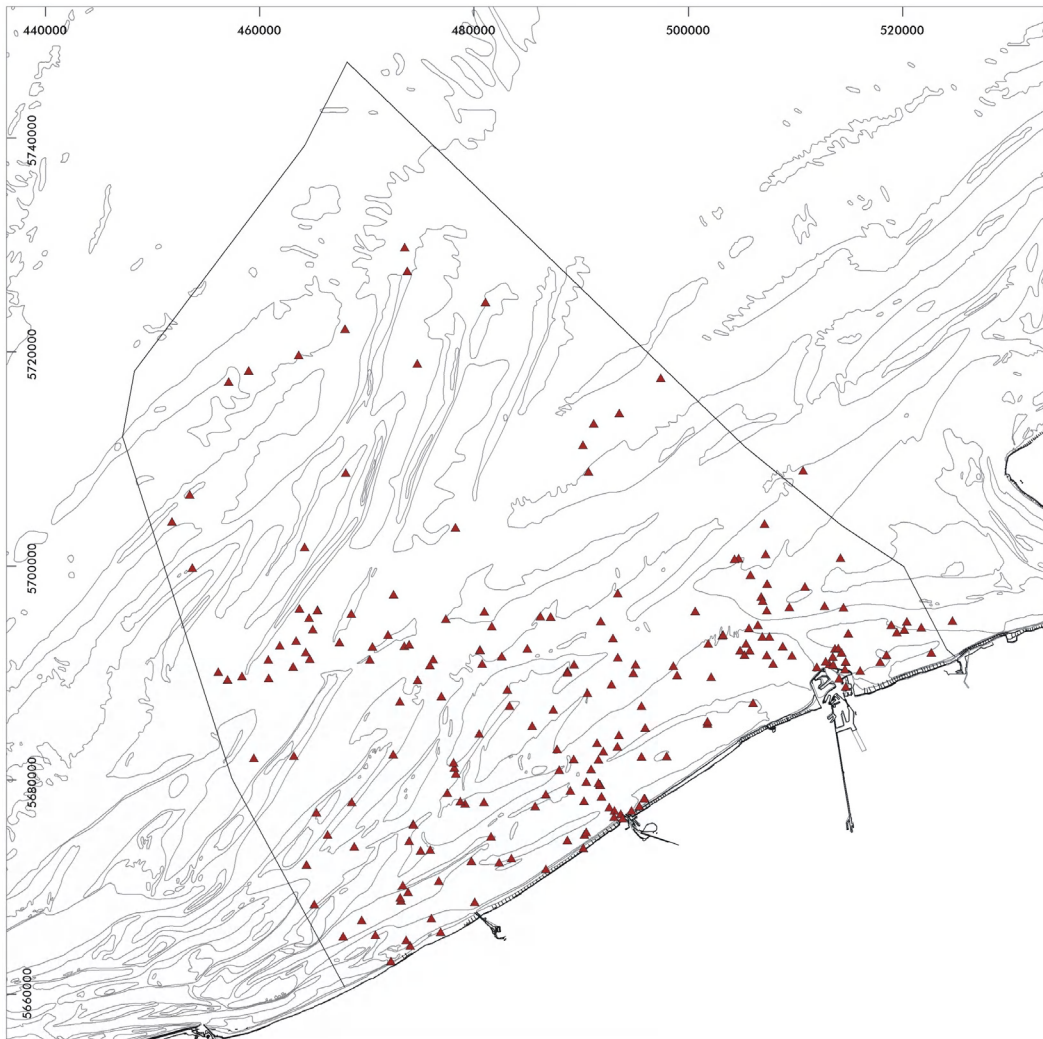


Map I.3.1a. Wrecks: spatial distribution



Original data source: Ministry of the Flemish Community, Department of Environment and Infrastructure, Waterways and Marine Affairs Administration, Division Coast, Hydrographic Office, "Wrecks on the Belgian Continental Shelf adapted up to BAZ 2003/07" (3 June 2003)
Map preparation: RCMG - Ghent University

May 2005

