



The Crustacean Society

---

Description of the Naupliar Stages of *Megabalanus tintinnabulum* (Cirripedia: Balanidae)

Author(s): V. Thiagarajan, V. P. Venugopalan, T. Subramoniam, K. V. K. Nair

Source: *Journal of Crustacean Biology*, Vol. 17, No. 2 (May, 1997), pp. 332-342

Published by: [The Crustacean Society](#)

Stable URL: <http://www.jstor.org/stable/1549282>

Accessed: 26/10/2010 05:12

---

Your use of the JSTOR archive indicates your acceptance of JSTOR's Terms and Conditions of Use, available at <http://www.jstor.org/page/info/about/policies/terms.jsp>. JSTOR's Terms and Conditions of Use provides, in part, that unless you have obtained prior permission, you may not download an entire issue of a journal or multiple copies of articles, and you may use content in the JSTOR archive only for your personal, non-commercial use.

Please contact the publisher regarding any further use of this work. Publisher contact information may be obtained at <http://www.jstor.org/action/showPublisher?publisherCode=crustsoc>.

Each copy of any part of a JSTOR transmission must contain the same copyright notice that appears on the screen or printed page of such transmission.

JSTOR is a not-for-profit service that helps scholars, researchers, and students discover, use, and build upon a wide range of content in a trusted digital archive. We use information technology and tools to increase productivity and facilitate new forms of scholarship. For more information about JSTOR, please contact [support@jstor.org](mailto:support@jstor.org).



*The Crustacean Society* is collaborating with JSTOR to digitize, preserve and extend access to *Journal of Crustacean Biology*.

<http://www.jstor.org>

## DESCRIPTION OF THE NAUPLIAR STAGES OF *MEGABALANUS TINTINNABULUM* (CIRRIPIEDIA: BALANIDAE)

V. Thiagarajan, V. P. Venugopalan, T. Subramoniam, and K. V. K. Nair

### ABSTRACT

Larval development of *Megabalanus tintinnabulum* was studied in the laboratory. At  $26 \pm 1^\circ\text{C}$  the development from nauplius I–VI required about 4 days, when the diatom *Chaetoceros wighami* was used as food. Detailed morphological drawings and setation formulae of appendages of all 6 naupliar stages are presented for the first time. Notable features of the nauplii include the presence of a spinulated lateral margin, a trilobed labrum with teeth, long dorsal and posterior shield spines, a single tooth on the inner prong of the antennal gnathobase, comb-shaped cuspidate setae on the antennae, and spines and simple denticulate setae on the mandibular endopodite in naupliar stage II. The present description of the nauplii is not in full agreement with the previous description of this species from this coast by Daniel (1958). Differences in stage sizes, naupliar morphology, and setation of appendages are used to distinguish this species from other megabalanines and the nauplii of megabalanines from those of balanines in the *Balanus amphitrite* group.

*Megabalanus tintinnabulum* (L.) is a large acorn barnacle commonly encountered in the shallow waters of both east and west coasts of India. It has been reported as a major component of fouling communities from both coasts (Anil, 1986; Venugopalan *et al.*, 1990; Rajagopal, 1991). Sasikumar (1991) reported various aspects of the biology of this barnacle, especially those related to reproduction and settlement. However, studies on the larval stages of this important barnacle species are sparse. Daniel (1958) briefly described the larval development in this species. Nevertheless, his report is incomplete with respect to detailed description of diagnostic features, such as carapace spine, labrum, abdominal process, and setation of appendages. In this paper, we give a detailed account of the larval development of *M. tintinnabulum*, emphasizing the changes in larval size, shape, general morphology and setation of appendages, along with data on duration of each stage.

### MATERIALS AND METHODS

**Larval Rearing.**—Adult *M. tintinnabulum* were collected from the approach jetty piers of the Madras Atomic Power Station, Kalpakkam ( $12^\circ 23' \text{N}$ ,  $80^\circ 11' \text{E}$ ), east coast of India. Release of the first (sometimes second) stage larvae from mature broods occurred after 24 h of aerial exposure, followed by immersion in clean sea water (Thiyagarajan *et al.*, 1996). Larvae were cultured following the method of Rittschof *et al.* (1984) with certain modifications, such as (1) instead of *Skeletonema costatum* (Grev.), another common diatom, *Chaetoceros wighami*

Brightwell ( $13\text{--}17 \times 10^5$  cells/ml), was used as food, and (2) larvae were reared at  $26 \pm 1^\circ\text{C}$  in Millipore ( $0.22 \mu\text{m}$ )-filtered sea water (1 larva/ml and salinity 30 ppt) under constant illumination. Every 6 h, 3-ml aliquots were removed from each replicate culture (6) and the larvae were observed to determine their stage of development and percentage of survival. Naupliar stages were determined using the key provided by Karande (1974a).

**Description of Larvae.**—The nauplii were observed under a Nikon Optiphot microscope for detailed analysis of larval morphology and limb setation. Drawings were made using a camera lucida and size was determined with the help of a calibrated ocular micrometer. Total length (TL) of larvae was determined by measuring the distance between the frontal margin of the carapace and the tip of the caudal spine (CS) or the abdominal furcal tip (whichever was longer). The carapace width (CW) was measured at the widest point behind the naupliar eye. Ten larvae of each stage were examined for determining size, shape, morphology, and setal formulae. The setal types present on the limbs are expressed by alphabetical formulae (Newman, 1965). The terminology used to describe the naupliar morphology follows that given by Kado and Hirano (1994).

### RESULTS

The intermolt period and percentage survival of the naupliar stages are given in Table 1. Stage II nauplii reached stage VI within 4 days. The mean values of total length (TL) and carapace width (CW) of various larval stages are given in Table 2. Typical setal types and shape used in the present study are illustrated in Fig. 1. The outline of the larval carapace (dorsal view), abdominal processes (AP) (lateral view), and details of the labrum

Table 1. *Megabalanus tintinnabulum*. Time taken for the appearance of naupliar stages in cultures along with percentage survival at each stage (culture temperature  $26 \pm 1^\circ\text{C}$ ).

	Nauplius stage					
	I	II	III	IV	V	VI
Survival (%)	100	100	100	100	89	82
Time of appearance*	0	0	1.6	2	3.6	4

\* Mean time (days) after which the naupliar stage appeared in culture (calculated from the initial time of release).

are shown in Figs. 2–4, respectively. The setal formulae of the antennule, antenna, mandible, and maxilla are given in Table 3 and illustrated in Figs. 5, 6, 7.

Each naupliar stage shows characters which are helpful in larval identification. Significant features of the various larval stages are given below.

#### Nauplius I

Figs. 2A, 3A, 4A, 5A, 6A, 7A

The body is elongated and pear-shaped with a mean total length of  $264 \pm 6 \mu\text{m}$ . The anterior margin of the carapace is markedly convex. Frontal horns (FH) are folded back toward the long axis of the body. The trilobed labrum is visible without teeth. Frontal filaments (FF) cannot be seen and the setae of the limbs are simple. The abdominal process (AP) and caudal spine (CS) are not fully differentiated.

The presence of posteriorly folded FH and simple setae on the appendages are characteristic of this stage. The larvae swim actively using three pairs of limbs and molt to stage II within 30 min.

#### Nauplius II

Figs. 2B, 3B, 4B, 5B, 6B, 7B

At this stage, the nauplius has a mean length of  $404 \pm 21 \mu\text{m}$  and mean width of  $203 \pm 4 \mu\text{m}$ . The carapace has extended in all directions, becoming bell-shaped with a less convex anterior margin. The FH are  $93 \pm 15 \mu\text{m}$  in length and are extended either anteriorly or are perpendicular to the long axis of the body. A pair of FF  $80 \pm 6 \mu\text{m}$  long can now be observed. The entire lateral margin of the carapace is spinulose with numerous small spines and with a pair of prominent spines. The labrum bears many short setules on each lobe. The distal margin of the median labral lobe bears teeth from this stage onward.

Table 2. Total length (TL) and carapace width (CW) in microns of naupliar stages of *Megabalanus tintinnabulum* (MT)—present study; *Balanus amphitrite* (BA)—Egan and Anderson 1986; *Megabalanus rosa* (MR) and *Megabalanus volcano* (MV)—Kado and Hirano, 1994; and *Megabalanus tintinnabulum* (MT-D)—Daniel, 1958.

Stages		MT	BA	MR	MV	MT-D
I	TL	264	220	245	229	—
	CW	160	140	130	126	180
II	TL	404	350	434	390	—
	CW	203	150	214	201	240
III	TL	516	370	503	476	—
	CW	280	200	258	255	300
IV	TL	610	400	604	552	—
	CW	364	200	334	312	330
V	TL	784	470	780	670	—
	CW	480	270	437	416	370
VI	TL	880	540	963	941	—
	CW	560	310	540	543	420

The AP has a pair of large serrated series 1 spines and a long distal forked portion (furca). The furcal stem has circlets of spines at the distal end. The CS is longer than the AP. The CS and furcal branches are covered with small spines from this stage onward.

The maxillae appear as long setae on the AP. At this stage, no preaxial setae are pres-

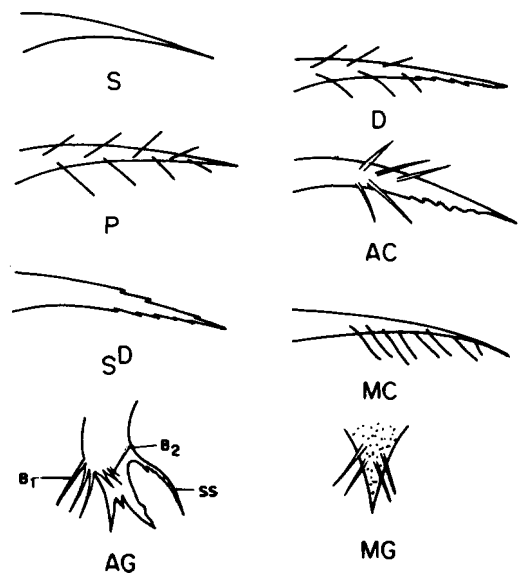


Fig. 1. Setal types used in the setation formulae of naupliar stages of *Megabalanus tintinnabulum*; S = simple, S<sup>D</sup> = simple-denticulate, P = plumose, D = plumodenticulate, MC = mandible-cuspidate, AC = antenna-cuspidate, AG = antennal gnathobase, MG = mandibular gnathobase setae, B<sub>1</sub> = series 1 bristle, B<sub>2</sub> = series 2 bristle, ss = setiform spine.

Table 3. Setal formulae (Newman, 1965) of six naupliar stages of *Megabalanus tintinnabulum* (MT)–present study; *Megabalanus rosa* (MR) and *Megabalanus volcano* (MV)–Kado and Hirano, 1994; *Balanus amphitrite* (BA)–Egan and Anderson, 1986. s = setiform spine, S = simple seta, P = plumose, C = cuspidate, G = gnathobase, S<sup>D</sup> = simple denticulate, and D = denticulate.

Stages		Antennule	Antenna		Mandible		Maxilla
			Exopodite	Endopodite	Exopodite	Endopodite	
I	MT	SSSS:SS:S:S	5S	SSS:SS:SS:SS:G	4S	SSS:SS:SS:SS:G	00000
	MR	SSSS:SS:S:S	5S	SSS:SS:SS:SS:G	4S	SSS:SS:SS:SS:G	00000
	MV	SSSS:SS:S:S	5S	SSS:SS:SS:SS:G	4S	SSS:SS:SS:SS:G	00000
	BA	S.SSS:SS:S:S	5S	SSS:SS:SS:SS:G	4S	SSS:SS:SS:SS:G	00000
II	MT	SSPS:SP:P:S	SP:4P:S	PPS:SP:PD:SPC:G	4P:S	SSS:SP:SP <sup>C</sup> :sPPC:G	00000
	MR	SSPS:SP:P:S	SP:4P:S	PPS:SP:PD:PSC:G	4P:S	SSS:SD:DSC:PC:G	00000
	MV	SSPS:SP:P:S	SP:4P:S	PPS:SP:PD:PSC:G	4P:S	SSS:SD:DSC:PC:G	00000
	BA	SSPS:PS:P:S	SP:4P:S	PPS:SP:PD:SPC:G	4P:S	SSS:SP:SPC:sPC:G	00000
III	MT	S:PSPP:SP:P:S	7P	PPP:SP:PD:PSPC:G	4P:S	SSS:SPS:PCD:sPCP:G	SS000
	MR	S:PSPP:SP:P:S	7P	PPP:SP:PD:PSSC:G	4P:S	SSS:SDS:DDC:sPCP:G	S0000
	MV	S:PSPP:SP:P:S	7P	PPP:SP:PD:PSSC:G	4P:S	SSS:SDS:DDC:sPCP:G	00000
	BA	SSPS:PS:P:S	7P	PPS:SP:PD:SPC:G	4P:S	SSS:SP:SPC:sPC:G	00000
IV	MT	SP:PSPP:SP:P:S	9P	PPSPP:SPS:PD:PSPC:G	5P	4S:SPP:SPCD:sPPC:G	S0000
	MR	SP:PSPP:SP:P:S	9P	PPSPS:SPS:PD:DSPC:G	5P	4S:SDD:SDDC:sPCP:G	SS000
	MV	SP:PSPP:SP:P:S	9P	PPSPS:SPS:PD:PSPC:G	5P	4S:SPD:SDDC:sPCP:G	SS000
	BA	S:S:PSPP:PS:P:S	3P:5P:S	PPPS:SPS:PD:SPPC:G	4PS	4S:SPP:DSPC:sDPC:G	SSSS0
V	MT	S:P:P:PSPP:SP:S:P:S	11P	PPSPP:SPP:PD:PSPC:G	5PS	4S:SPD:SPCD:sPPC:G	SSSSS
	MR	S:P:P:PSPP:SP:S:P:S	11P	PPSPP:SPP:PD:DSDC:G	5PS	4S:SSDD:SDDC:sPDC:G	SSSSS
	MV	S:S:P:PSPP:SP:S:P:S	11P	PPSPP:SPP:PD:PSPC:G	5PS	4S:SSDD:SDDC:sPPC:G	SSSSS
	BA	S:S:P:PSPP:PS:S:P:S	4P:6P:S	PPPPS:SPP:PD:SPPC:G	5PS	4S:SSDD:SDPC:sPDC:G	SSSSS
VI	MT	S:P:P:PSPP:SP:P:PS:S	12P	PPSPP:SPP:PD:SPCP:G	6P	4S:SSPD:SDCD:sPPC:G	SSSSS
	MR	S:P:P:PSPP:SP:P:PS:S	12P	PPSPP:SPP:PD:DDDC:G	6P	4S:SSDD:SDDC:sDDC:G	SSPSP
	MV	S:P:P:PSPP:SP:P:PS:S	12P	PPSPP:SPP:PD:PSPC:G	6P	4S:SSDD:SDDC:sPPC:G	PPSPSP
	BA	S:S:P:PPPP:PS:P:PS:S	12P	PPPPS:SPP:PD:SPPC:G	6P	4S:SSDD:SPPC:sPDC:G	SSSSS

ent on the antennules (Fig. 5B). The antennal gnathobase is well developed with three apical spines (inner, median, and outer prongs) and series 1 bristle (Fig. 6B). Simple denticulate setae (S<sup>D</sup>) on the endopodite of the mandible are present. This stage molts to stage III in 38 h.

Nauplius III  
Figs. 2C, 3C, 4C, 5C, 6C, 7C

Stage III nauplii are 516 ± 12 μm long and 280 ± 2 μm wide. The carapace is more bulbous than in the earlier stages. The prominent spines on the lateral margin of the carapace have disappeared, but small spines are retained throughout the naupliar stages. The AP bears only a pair of series 1 (distal) spines. A pair of dorsal shield spines (DSS) appears in this stage and is retained till stage VI. The maxillae appear as two stout simple setae in the thoracic region of AP. The first preaxial seta appears on the antennule. Other setation features of this stage are given in Table 3. Nauplii of this stage molt to stage IV within 10 h.

Nauplius IV  
Figs. 2D, 3D, 4D, 5D, 6D, 7D

The larvae are 610 ± 10 μm in total length and the shield is 364 ± 4 μm in width. The FH and FF are 96 ± 12 μm and 100 ± 8 μm long, respectively. The median lobe of the labrum bears serrated setules, but the lateral lobes still have only simple short setules. In the posterior region of the larva, the AP has separated from the carapace, so that it now has an entire posterior margin, bearing a pair of posterior shield spines (PSS). This carapace form is retained until stage VI. The AP bears series 1 (distal) and series 2 (proximal) spines. The series 1 spines are larger than the series 2 spines. A median nonserrated spine appears between the pair of serrated series 2 spines. CS and AP are almost equal in length. The maxillae are seen as long simple setae. The antennule now bears two preaxial setae. From this stage onward the antennal endopodite bears 15 setae.

The presence of an entire shield, long PSS, two preaxial setae on the antennule, and series 1 and 2 spines on the AP are character-

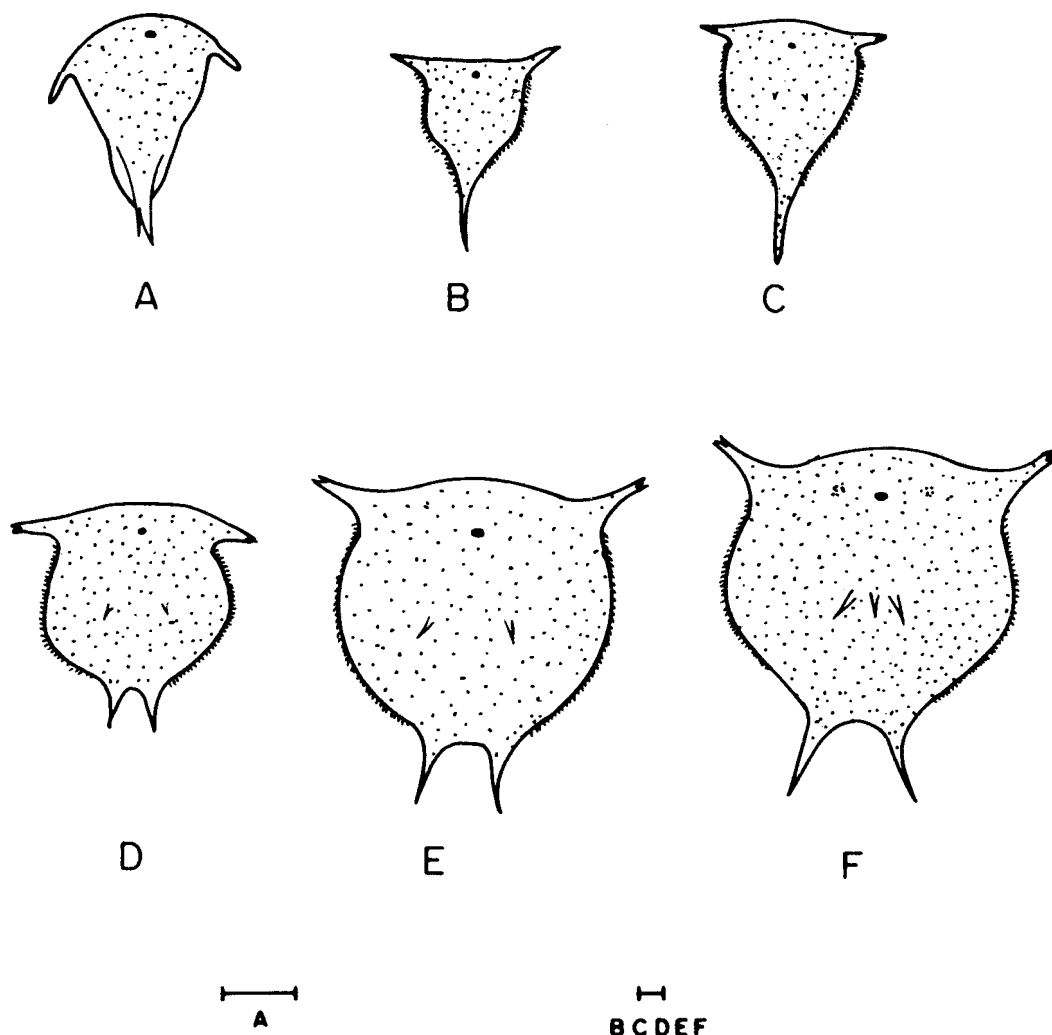


Fig. 2. *Megabalanus tintinnabulum*: A–F, shield outline (dorsal view) of naupliar stages I–VI. Scale bar = 100  $\mu$ m.

istic features of this stage. These larvae molt to stage V after 38 h.

#### Nauplius V

Figs. 2E, 3E, 4E, 5E, 6E, 7E

Stage V larvae are  $784 \pm 35$   $\mu$ m long and  $480 \pm 57$   $\mu$ m wide. The shield margin is bulbous with a slightly convex anterior margin. The well-developed long DSS are now seen along with many small spines on the shield. The PSS are now  $122 \pm 4$   $\mu$ m long. The thoracic area is swollen and segmented. A pair of series 3 spines appears anterior to the furcal stem, in addition to the series 1 and 2 spines. The antennule now has three preaxial setae and five postaxial setae.

The presence of 12 setae on the antennule and three series of spines (1, 2, and 3) on the AP (Fig. 3) are characteristic of this stage. This stage molts to stage VI within 10 h.

#### Nauplius VI

Figs. 2F, 3F, 4F, 5F, 6F, 7F

The larva measures  $880 \pm 2$   $\mu$ m in length and  $560 \pm 3$   $\mu$ m in width. The FF and FH measure about  $136 \pm 4$   $\mu$ m and  $124 \pm 8$   $\mu$ m, respectively. A median spine makes its appearance between the pair of DSS. The PSS is 163  $\mu$ m long. Six pairs of series 2 spines (the primordial thoracopod) are present along the ventral side of the thoraco-abdominal process in two parallel lines. The anten-

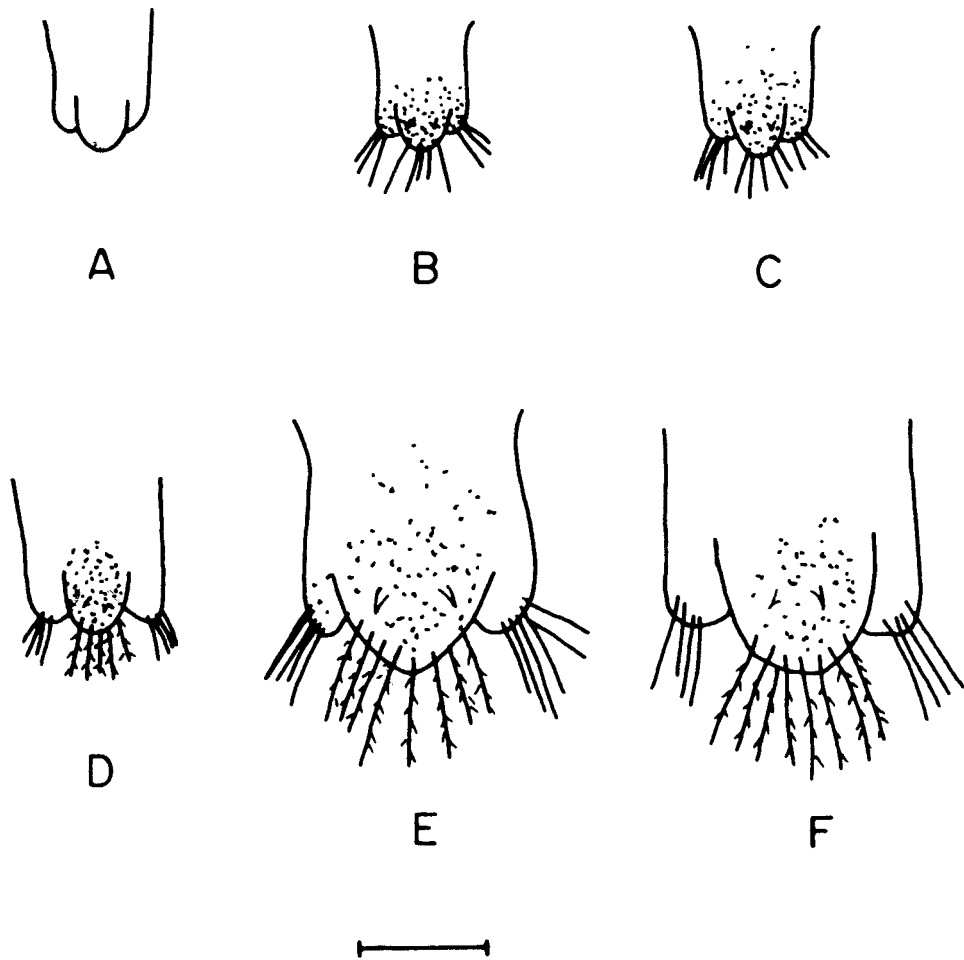


Fig. 3. *Megabalanus tintinnabulum*: A–F, ventral view of labrum of stages I–VI. Scale bar = 100  $\mu$ m.

nule is provided with three preaxial and six postaxial setae. Paired lateral compound eyes are seen on either side of the unpaired median naupliar eye. However, the eyes became fully pigmented only toward the end of the period.

Presence of series 2 spines (6 pairs) and 13 antennular setae (S:P:P:PSPP:SP:P:PS:S) (see legend for Fig. 1) are the distinguishing characters of this final stage.

#### DISCUSSION

Four of the common and most abundant barnacles encountered on the east coast of India are *Megabalanus tintinnabulum*, *Balanus reticulatus* Utinomi, *B. cirratus* Darwin, and *B. amphitrite* Darwin (see Sasikumar, 1991; Fernando, 1978). Larval development of all

these species has already been reported (Pillai, 1958; Daniel, 1958; Karande, 1973, 1974a; Thiagarajan *et al.*, 1996, in press). The larvae of these tropical balanids show many similarities. Hence, in the absence of detailed descriptions of key features, such as carapace shape and spines, AP spines, and limb setation, nauplii of these species are likely to be wrongly identified in plankton samples. On the other hand, the chthamalid *Tetraclitella* and pedunculate barnacle larvae available along this coast can be easily distinguished by their well-established characteristics (Karande, 1974b; Karande and Thomas, 1976; Molares *et al.*, 1994). The ability to identify balanid larvae in plankton samples would be very helpful to cirriped ecologists trying to understand larval distribution in

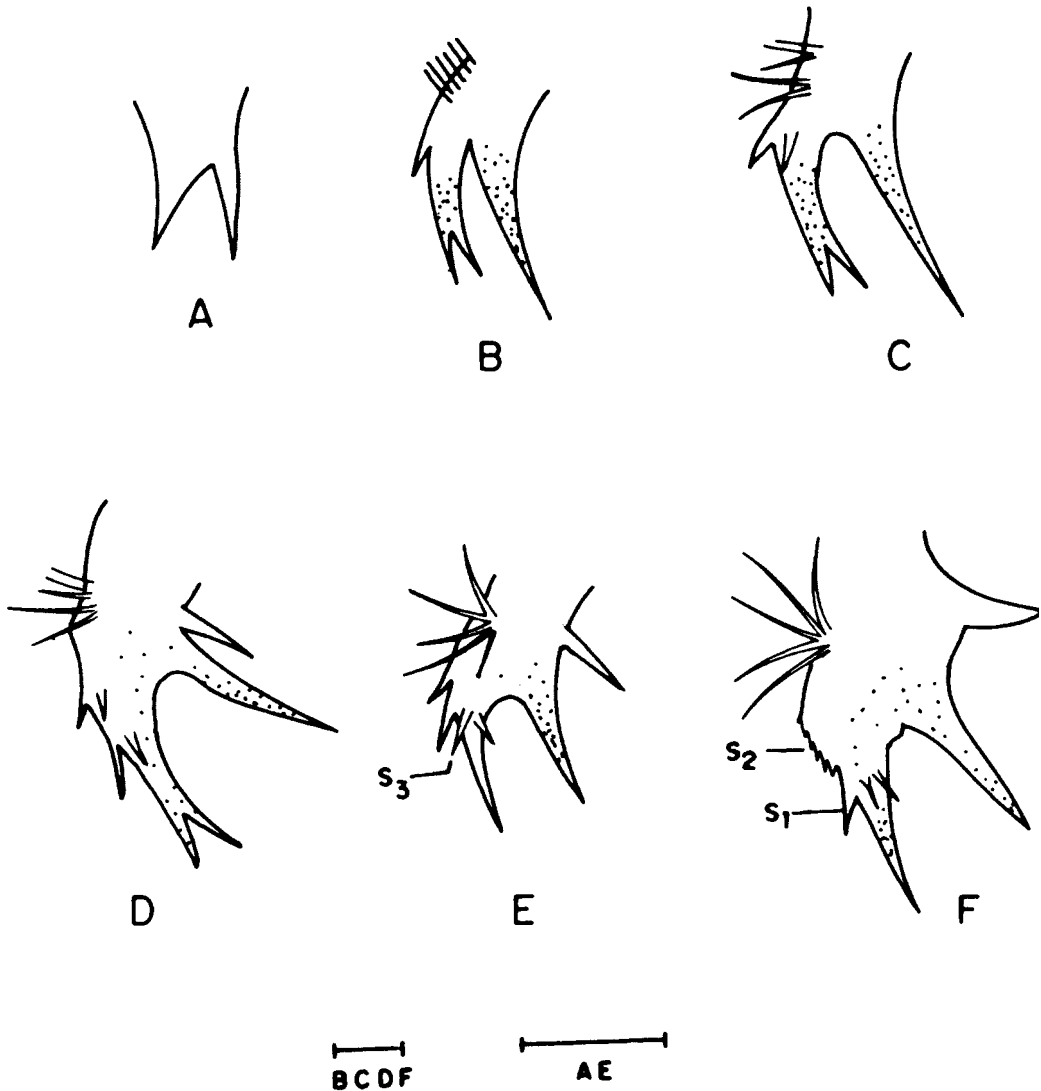


Fig. 4. *Megabalanus tintinnabulum*: A–F, thoraco-abdominal process with maxilla (lateral view) of naupliar stages I–VI.  $S_1$  = series 1 spines,  $S_2$  = series 2 spines,  $S_3$  = series 3 spines. Scale bar = 100  $\mu$ m.

coastal waters. The larval description of *M. tintinnabulum* by Daniel (1958) is insufficient to fully differentiate the species from other closely related balanids.

#### Larval Development

Larval development times of all tropical balanids studied in the laboratory are similar (Karande, 1974a). Variations in duration of larval development in the laboratory are possibly due to differences in culture conditions (Kado and Kim, 1996). Daniel (1958) reported the appearance of cyprids of *M. tintinnabulum* in laboratory culture within 48

h (in the present study it took four days), but he did not describe the culture conditions used. It is possible that sea water used for Daniel's culture might have been contaminated by larval barnacles.

#### Larval Morphology

Except body size, larval morphological features such as body shape, spines on the abdomen, and setation of appendages are not likely to vary between larvae reared in the laboratory and those collected from natural plankton (Ovsyannikova and Korn, 1984; Miller and Roughgarden, 1994). Therefore,

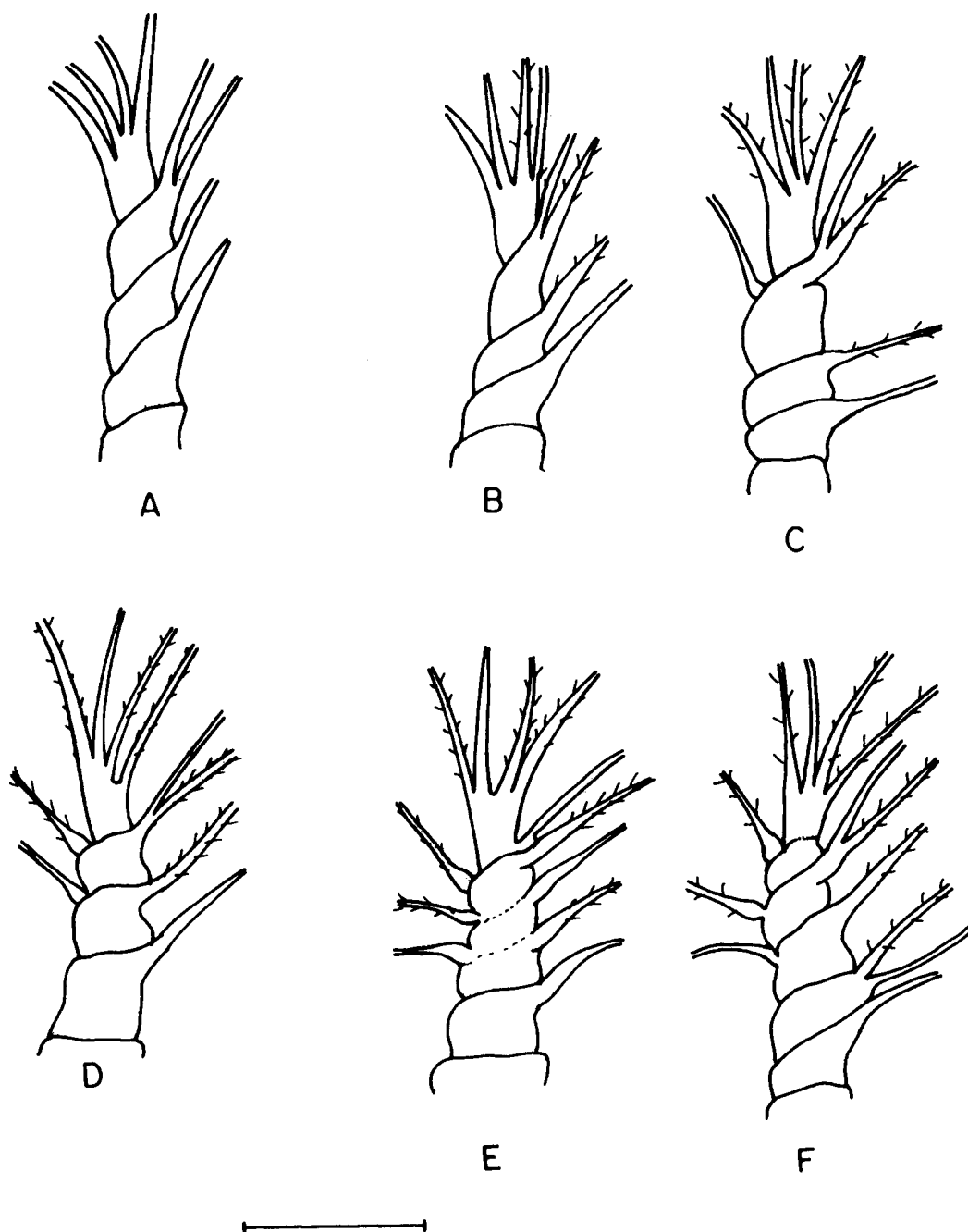


Fig. 5. Antennules of naupliar stages I–VI (A–F) of *Megabalanus tintinnabulum*. Scale bar = 100  $\mu$ m.

the size of laboratory-reared larvae is of little value in the identification of species. However, other features, such as shape of the carapace, spines on the AP, and setation of appendages are considered crucial in larval identification (Lang, 1979; Egan and Anderson, 1986; Miller and Roughgarden, 1994).

The margin of the carapace of *M. tintinnabulum* (present study), *M. volcano* (Pilsbry), (see Kado and Hirano, 1994), *B. reticulatus* Utinomi (see Thiagarajan *et al.*, in press b), *B. cirratus* and *B. amaryllus euamaryllus* Broch (see Karande, 1974a, b) is spinulated, whereas in *B. amphitrite* (see Karande, 1973;



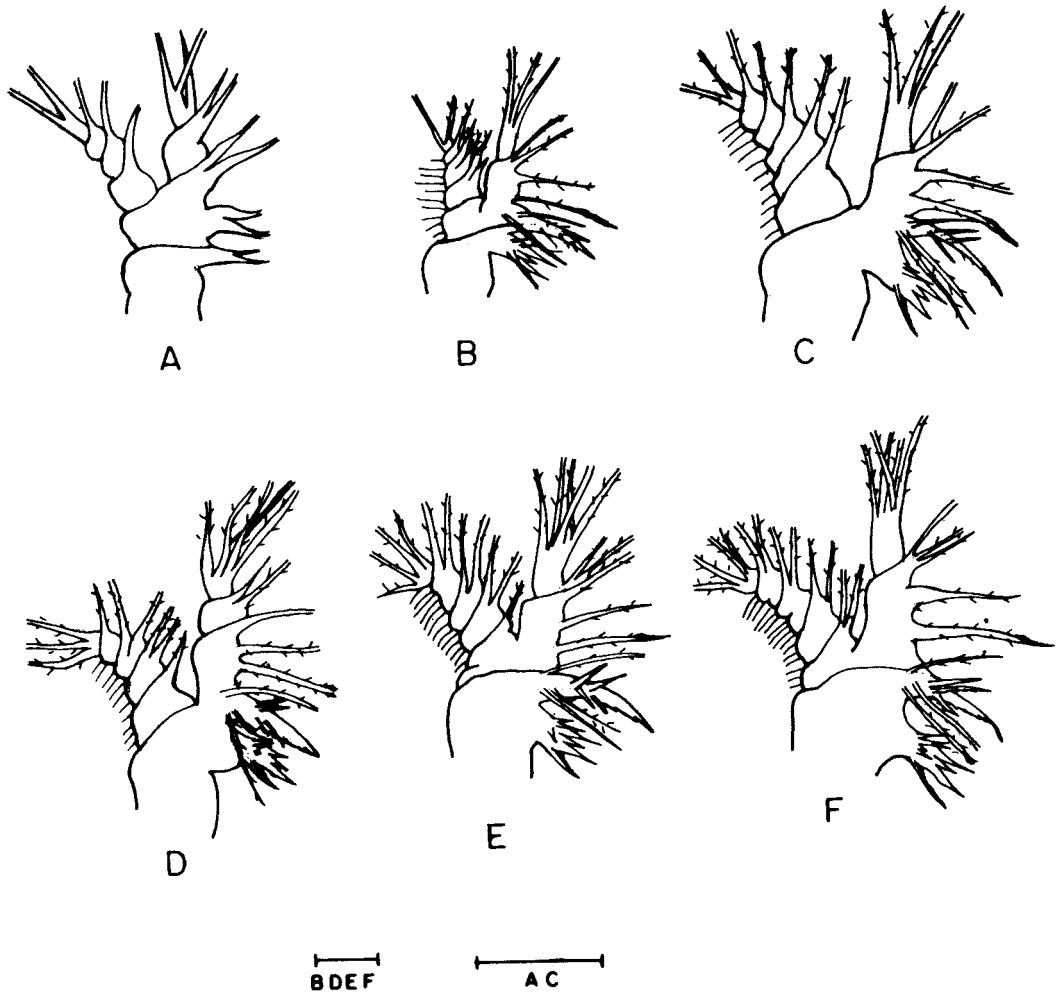


Fig. 6. Antennae of naupliar stages I–VI (A–F) of *Megabalanus tintinnabulum*. Scale bar = 100  $\mu$ m.

Egan and Anderson, 1986), *B. albicostatus* Pilsbry (see Lee and Kim, 1991), and *M. rosa* (Pilsbry) (see Kado and Hirano, 1994), it is smooth. The presence of DSS in naupliar stages III–VI distinguishes larvae of *M. tintinnabulum* from other balanid larvae in plankton samples in Indian waters. However, it has been reported for other megabalanines, such as *M. rosa* and *M. volcano* (see Choi *et al.*, 1992; Kado and Hirano, 1994) from Japan. The DSS, therefore, are helpful only in differentiating naupliar stages III–VI of this species from other balanid larvae available locally. The carapace becomes entire and develops a pair of long PSS in stage IV as in other barnacles, except in chthamalids

(Karande and Thomas, 1976). These large spines are visible under a dissection microscope (104  $\mu$ m in stage IV, 122  $\mu$ m in stage V, and 163  $\mu$ m in stage VI). No other cirriped larva described from Indian waters has a PSS longer than 110  $\mu$ m (Karande, 1974b). Thus, it is also possible to separate this species from others by virtue of the presence of this long PSS. The presence of teeth on the trilobed labrum of this species is a feature similar to that of many other barnacle species. However, in most balanid species the teeth are lost after stage II (Egan and Anderson, 1986), while in megabalanids they are retained to stage VI.

The relative length of CS and AP may vary with the orientation in which the larvae are

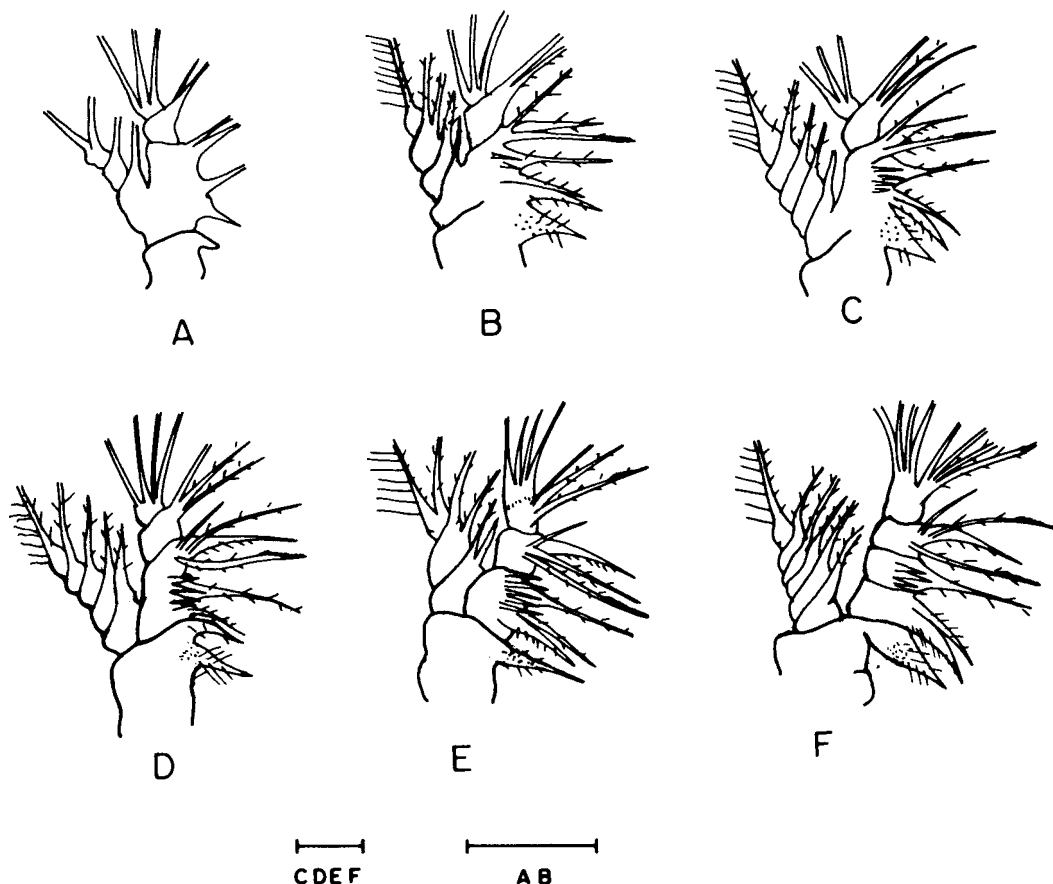


Fig. 7. Mandibles of naupliar stages I–VI (A–F) of *Megabalanus tintinnabulum*. Scale bar = 100  $\mu$ m.

observed. Therefore, it is not of much value in the determination of a stage or identification of species. In many balanids, the sequence of appearance and nature of spines on the AP are of diagnostic value. In *B. cirratus* both the proximal and distal AP spines appear in stage II (Karande, 1974a). The presence of a median spine between the series 2 spines of stage IV of *M. tintinnabulum* is characteristic of many balanids except *B. amphitrite* (see Karande, 1973).

The salient morphological features of nauplii of *M. tintinnabulum* are, therefore, their large size (Table 2), spinulated lateral margin, trilobed labrum with teeth, long posterior shield spines, and presence of dorsal shield spines. The present observations differ from those of Daniel (1958) with regard to larval size, shape, and morphology, such as FF in stage I, development of paired compound

eyes in stage V, appearance of six pairs of series 2 spines in stage V, and the setation of antennules and mandibles (see below).

#### Setation of Appendages

The antennular setation of *M. tintinnabulum*, in general, conforms to that of other cirripeds thus far described. That is, there are no preaxial setae in stages I and II; the setae appear in the following order: one in stage III, two in stage IV, and three in stages V and VI. Stage VI larva has six setae on the postaxial side. Thus, it is possible to stage the nauplii by looking at antennular setation with the help of a dissection microscope. Among the three preaxial setae, which develop on the antennule during stages V and VI, two setae are always plumose in all megabalanids, whereas in other balanids, namely, *B. reticulatus*, *B. cirratus*, and *B. amphitrite* (Table 3),

only one seta is plumose and two are simple. In *B. reticulatus*, the presence of preaxial "hairs" on the antennule has been considered a distinguishing character (Thiyagarajan *et al.*, in press b). In *M. tintinnabulum* such preaxial "hairs" are absent.

In naupliar stages IV–VI of *M. rosa* the antenna has three denticulate setae (Table 3) on the fifth setal quadrat (Kado and Hirano, 1994). In other balanids, including the present species, not more than one such seta is observed. The size and shape of the antennal gnathobase in successive naupliar stages of this species are similar to those of *B. amphitrite*, *M. rosa*, and *M. volcano*. However, in *M. rosa* and *M. volcano*, two teeth have been reported on the inner prong, whereas in the present species only one such tooth was observed. Moreover, in *M. tintinnabulum*, Daniel (1958) observed only 21, 22, and 22 setae on the antenna of stages IV, V, and VI, respectively, whereas we observed 23, 25, and 26, respectively, confirming the observations of others who have worked on megabalanids (Miller and Roughgarden, 1994; Kado and Hirano, 1994).

In general, no differences are observed in the setation of mandibles among the species mentioned above, except that in *M. rosa* and *M. volcano* 2–4 denticulate setae appear during naupliar stages II–VI (Table 3). In *M. tintinnabulum* and *B. amphitrite*, not more than three setae appear during the same period. Daniel (1958) also observed fewer setae on the mandibles (19, instead of 20, 21, and 22 in stages IV, V, and VI, respectively).

#### ACKNOWLEDGEMENTS

This work was supported by a grant made to (TS) by the Board of Research in Nuclear Sciences, Department of Atomic Energy, India. Thanks are due to the Station Director of the Madras Atomic Power Station (MAPS), for facilities. We are grateful to Dr. P. N. Moorthy, Head, Applied Chemistry Division (APCD), Bhabha Atomic Research Centre (BARC), Mumbai, and Dr. P. K. Mathur, Head, Water and Steam Chemistry Laboratory (WSCL), Kalpakkam, for support. We are thankful to Dr. K. Nandakumar for his critical comments on the manuscript.

#### LITERATURE CITED

- Anil, A. C. 1986. Studies on marine fouling in the Zuari estuary (Goa), west coast of India.—Doctoral thesis, Karnataka University, Karnataka, India. Pp. 1–175.
- Choi, H. K., D. T. Anderson, and C. H. Kim. 1992. Larval development of the megabalanine balanomorph *Megabalanus rosa* (Pilsbry) (Cirripedia, Balanidae).—Proceedings of the Linnaean Society 113: 175–184.
- Daniel, A. 1958. The development and metamorphosis of three species of sessile barnacles.—Journal of Madras University (B) 28: 23–47.
- Egan, E. A., and D. T. Anderson. 1986. Larval development of *Balanus amphitrite* Darwin and *Balanus variegatus* Darwin (Cirripedia: Balanidae) from New South Wales, Australia.—Crustaceana 51: 188–207.
- Fernando, S. A. 1978. Studies on the biology of barnacles of Porto Novo region.—Doctoral thesis, Annamalai University, Chidambaram, India. Pp. 1–156.
- Kado, R., and R. Hirano. 1994. Larval development of two Japanese megabalanine barnacles, *Megabalanus volcano* (Pilsbry) and *Megabalanus rosa* (Pilsbry) (Cirripedia, Balanidae), reared in the laboratory.—Journal of Experimental Marine Biology and Ecology 175: 17–41.
- , and M. H. Kim. 1996. Larval development of *Octomeris sulcata* Nilsson-Cantell (Cirripedia: Thoracica: Chthamalidae) from Japan and Korea.—Hydrobiologia 325: 65–76.
- Karande, A. A. 1973. Larval development of *Balanus amphitrite amphitrite* D. reared in the laboratory.—Proceedings of the Indian Academy of Sciences (B) 77: 56–63.
- . 1974a. *Balanus variegatus* Darwin: the laboratory reared larvae compared with *Balanus amphitrite amphitrite* Darwin (Cirripedia).—Crustaceana 26: 229–235.
- . 1974b. Larval development of the barnacle *Tetraclitella karandei* reared in the laboratory.—Biological Bulletin 146: 249–257.
- , and M. K. Thomas. 1976. The larvae of the intertidal barnacle *Chthamalus malayensis* Pilsbry.—Proceedings of the Indian Academy of Sciences 83: 210–219.
- Lang, W. H. 1979. Larval development of shallow water barnacles of the Carolinas (Cirripedia: Thoracica) with keys to naupliar stages.—National Oceanic and Atmospheric Administration, Technical Report, National Marine Fisheries Service, Circular 421: 1–39.
- Lee, C., and C. H. Kim. 1991. Larval development of *Balanus albicostatus* Pilsbry (Cirripedia, Thoracica) reared in the laboratory.—Journal of Experimental Marine Biology and Ecology 147: 231–244.
- Miller, M. K., and J. Roughgarden. 1994. Descriptions of the larvae of *Tetraclitella rubescens* and *Megabalanus californicus* with a comparison of the common barnacle larvae of the central California coast.—Journal of Crustacean Biology 14: 579–600.
- Molares, J., F. Tilves, and C. Pascual. 1994. Larval development of the pedunculate barnacle *Pollicipes cornucopia* (Cirripedia: Scalpellomorpha) reared in the laboratory.—Marine Biology 120: 261–264.
- Newman, W. A. 1965. Prospectus on larval cirripede setation formulae.—Crustaceana 9: 51–56.
- Ovsyannikova, I. I., and O. M. Korn. 1984. Naupliar development of the barnacle *Balanus crenatus* in Peter

- the Great Bay (Sea of Japan).—*Biologia Morya* 5: 34–40.
- Pillai, K. N. 1958. Development of *Balanus amphitrite* with a note on the early larvae of *Chelonibia testudinaria*.—*Bulletin of the Central Research Institute, Kerala* 6: 117–130.
- Rajagopal, S. 1991. Biofouling problems in the condenser cooling circuit of a coastal power station with special reference to green mussel, *Perna viridis*.—*Doctoral thesis, University of Madras, Madras, India*. Pp. 1–125.
- Rittschof, D., E. S. Branscomb, and J. D. Costlow. 1984. Settlement and behaviour in relation to flow and surface in larval barnacles, *Balanus amphitrite* Darwin.—*Journal of Experimental Marine Biology and Ecology* 82: 131–146.
- Sasikumar, N. 1991. Ecology and control of biofouling in a coastal power station with special reference to *Megabalanus tintinnabulum*.—*Doctoral thesis, University of Madras, Madras, India*. Pp. 1–73.
- Thiyagarajan, V., V. P. Venugopalan, T. Subramoniam and K. V. K. Nair. 1996. Laboratory rearing of barnacle larvae (*Balanus reticulatus*) using *Chaetoceros wighami* as food.—*Indian Journal of Marine Sciences* 25: 365–367.
- Thiyagarajan, V., V. P. Venugopalan, K. V. K. Nair and T. Subramoniam. (In press.) Larval description of *Balanus reticulatus* Utinomi (Cirripedia, Balanidae), reared in the laboratory.—*Journal of Experimental Marine Biology and Ecology*.
- Venugopalan, V. P., S. Rajagopal, N. Sasikumar, and K. V. K. Nair. 1990. Marine biology of a seawater tunnel.—*In*: B. N. Desai, ed., *Oceanography of the Indian Ocean*. Pp. 253–259. Oxford & IBH Publishers Pvt. Ltd., New Delhi, India.

RECEIVED: 12 June 1996.

ACCEPTED: 15 October 1996.

Addresses: (VT and TS) Department of Zoology, University of Madras, Guindy Campus, Madras 600 025, India; (VPV and KVKN), Marine Biology Programme, Water & Steam Chemistry Laboratory, BARC, IGCAR Campus, Kalpakkam 603 102, India.