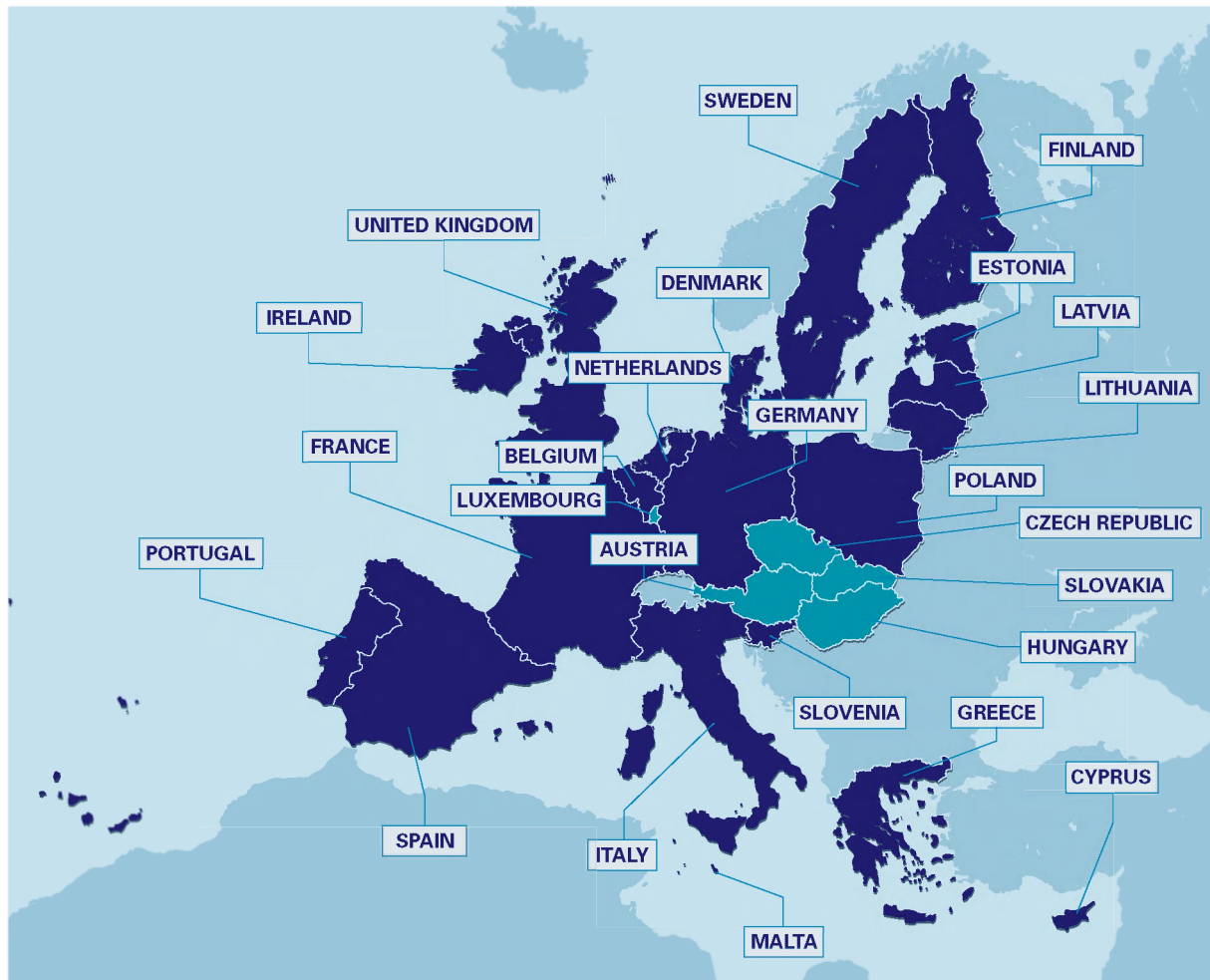


# 1. The sea, a vital EU resource



## The maritime countries of the European Union



- **20 European Union Member States have coasts:** Belgium, Denmark, Germany, Estonia, Greece, Spain, France, Ireland, Cyprus, Italy, Latvia, Lithuania, Malta, the Netherlands, Poland, Portugal, Slovenia, Sweden, Finland and the United Kingdom.
- **The capitals of seven states are located on the coast:** Athens, Valetta, Lisbon, Dublin, Copenhagen, Stockholm and Helsinki.
- The European Union has a coastline of **68,000 km**.
- Over the last 50 years, the population living by the sea has more than **doubled** today, reaching **70 million people** (or 16% of the EU 25).
- Almost **half of the Union's population** lives less than 50 km from the sea.

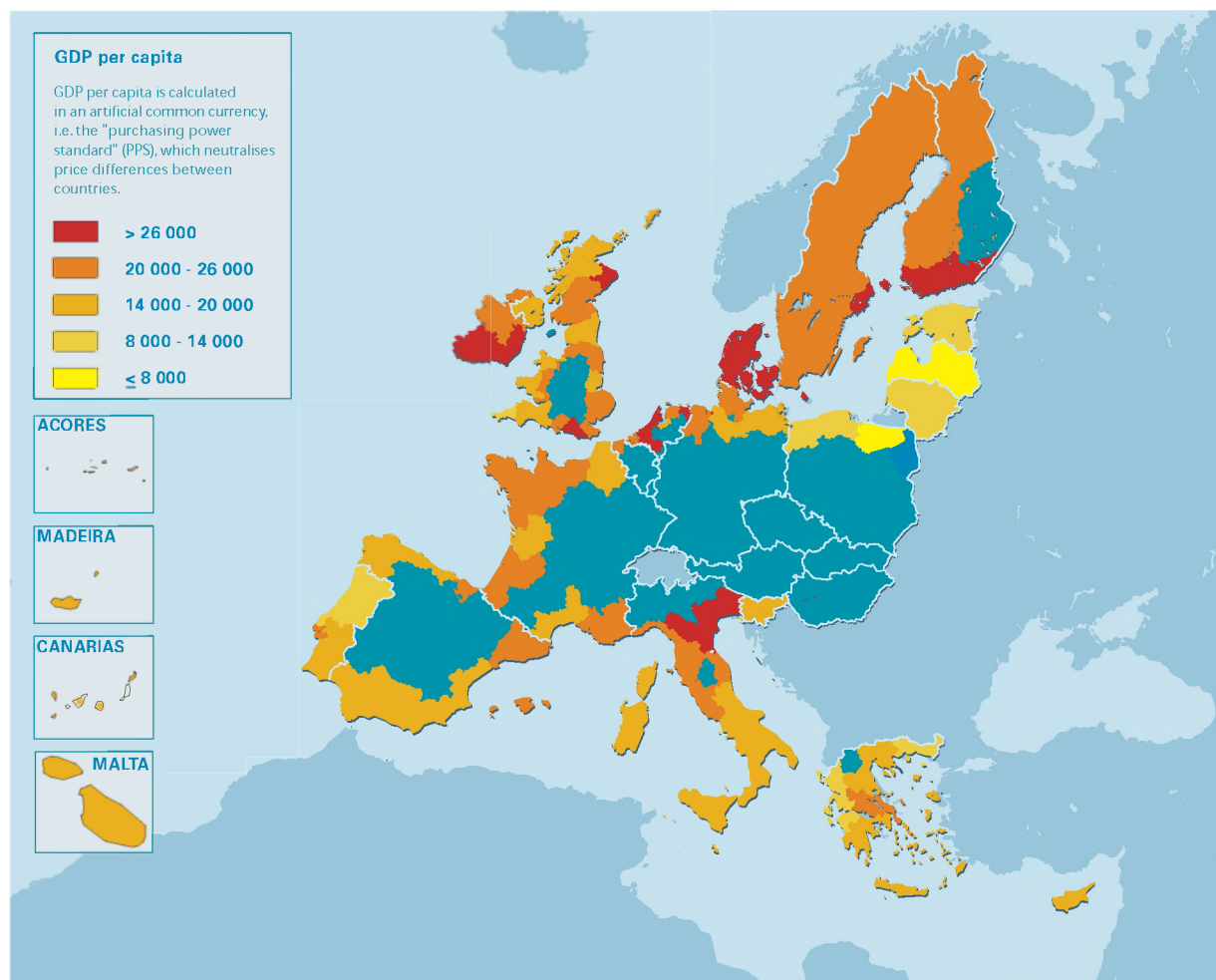
## European ports

- Europe has more than **1,000 maritime ports** which handle more than 1 billion tonnes of cargo per year.
- **300 million passengers** transit annually through European maritime ports.
- Europe's busiest ports in 2003 were: Rotterdam (320 Mt), Antwerp (143 Mt), Hamburg (106 Mt), Marseilles (95 Mt), Le Havre (71 Mt), Amsterdam (65 Mt), Algeciras (60 Mt), Genoa (52 Mt) and London (51 Mt).

### Number of ports in Europe with traffic of over 1 million tonnes (2002)

Belgium	4	Ireland	7
Germany	17	Italy	38
Denmark	22	Lithuania	1
Estonia	5	Latvia	4
Spain	26	Malta	1
Finland	21	Netherlands	10
France	20	Portugal	6
United Kingdom	48	Sweden	28
Greece	20	Slovenia	2

## GDP per capita in coastal regions



Overseas Departments: no data available