

**Fig. 1.** Indices of Adélie and chinstrap population responses. Closed circles (●) indicate chinstrap penguins at Admiralty Bay, King George Island. Open circles (○) indicate chinstrap penguins at Cape Shirreff, Livingston Island. Closed triangles (▲) indicate Adélie penguins at Admiralty Bay. (A) Number of breeding pairs of Adélie and chinstrap penguins at all colonies. (B) Percent change in breeding population size of Adélie and chinstrap penguins at Admiralty Bay. Gray bars highlight the years in which the percent changes in Adélie and chinstrap breeding populations exceed 10% in opposite directions. Annual ice conditions are indicated as SDs from the long-term mean; + or – is between 0 and 1 SD; ++ or -- is between 1 and 2 SD; and +++ or --- is between 2 and 3 SD. No ice data are available for the winters of 2008 and 2009. (C) Recruitment of first-time breeders into the Adélie population at Admiralty Bay. (D) Index of recruitment to the natal colony for Adélie and chinstrap penguins (7). Chinstrap recruitment before 1984 at Admiralty Bay is excluded because of inconsistent resighting effort.

why populations of Adélie and chinstrap penguins increased as a result of competitive release following the harvesting of the whales and seals (the krill-surplus hypothesis) (18, 19) and why more recently they have decreased as a result of climate change and the recovery of pinnipeds and baleen whale populations (7–10).

**Table 1.** Average annual percent (and absolute) changes in the abundances of Adélie and chinstrap penguins from breeding colonies in the Western Antarctic Peninsula and Scotia Sea region

Area/Region	Adélie	Chinstrap
Admiralty Bay	–2.3 (–13,787)	–2.5 (–4,255)
South Sandwich Islands	–3.9 (–20,000)	–4.4 (–3,715,000)
South Orkney Islands	–4.5 (–482)	–1.9 (–18,066)
South Shetland Islands*	–2.0 (–7,247)	–2.7 (–21,809)
Western Antarctic Peninsula	–2.5 (–20,439)	–0.17 (–35) <sup>†</sup>
Overall	–2.9 (–61,955)	–4.3 (–3,759,165)

Averages are weighted by absolute changes in abundance and are limited to colonies with a minimum of 10 y between the first and last counts.

\*Not including data from Admiralty Bay.

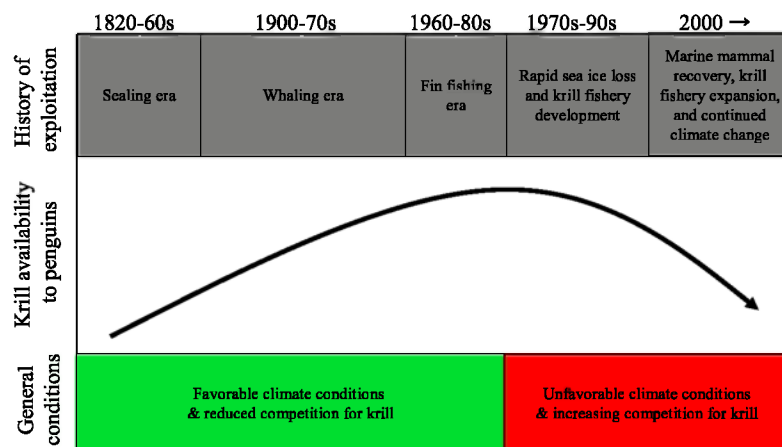
<sup>†</sup>Not including data from the Palmer Long-Term Ecological Research Program.

Laws (18) estimated that 150 million tons of krill were available to support other krill predators, such as penguins, after humans depleted the world's whale populations during the historic whaling era. Historical data on penguin populations and trends are few and largely anecdotal. However, the data that do exist are intriguing and support this hypothesis; Adélie and chinstrap penguin populations increased up to fivefold at breeding colonies in the Scotia Sea region from the 1930s to the 1970s (19–22). The large populations of Adélie and chinstrap penguin were not sustained for long, however, and now are declining precipitously (7–10, 23, 24). Concomitantly, increasing temperatures and reductions in sea ice have altered the physical environment necessary to sustain large krill populations (25–27). We hypothesize that the amount of krill available to penguins has declined because of increased competition for krill from recovering whale and fur seal populations (28–32) and from bottom-up, climate-driven changes that have altered this ecosystem significantly during the last 2–3 decades (4, 7, 8, 33–36; Fig. 2).

Recent analyses of Adélie penguin diets using fossil eggshell material from extinct colonies throughout the Scotia Sea region revealed an abrupt shift in their diets within the last 200 y (37). Only recently, contemporary with the removal of baleen whales and krill-eating seals, have Adélie penguins relied on krill as a major dietary item. Although this dietary change suggests that penguins could buffer the impact of further declines in krill biomass by returning to a diet dominated by fishes, we are unsure whether this reversal can or will occur and whether a fish-based diet would support large penguin populations. Diet data collected during the last 30 y have shown that krill continue to dominate the diet of Adélie and chinstrap penguins (7) despite an estimated 38–81% reduction in krill biomass during that period (35). Although we have found evidence of fishes (e.g., tissue, scales, and otoliths) in the diets of Adélie and chinstrap penguins breeding at our study sites in the South Shetland Islands (Admiralty Bay and Cape Shirreff) from about 25–30% of all samples annually, there has been no upward trend over the 30-y period. Furthermore, fish biomass in the diet averaged only 1–2% by mass of stomach contents with a maximum of 5% per year (14, 38).

Interannual variability in the abundance and biomass of krill in the WAP and Scotia Sea is substantial and can be attributed to the aperiodic nature of recruitment since the late 1980s. Sea-ice extent and duration have been correlated with the reproductive success of krill, and in years following winters with expansive ice area and temporal duration, krill reproductive success increases (34, 36). Mean annual sea-ice extent in the WAP and Scotia Sea is inversely related to mean annual air temperature (Fig. 3A), and the rapid warming experienced in the WAP and Scotia Sea (25, 26) is correlated with regional declines in sea-ice extent and duration that affect krill productivity. Long-term, climate-driven declines in krill abundance are evident in this region. Krill density has declined by as much as 80% from the mid 1970s to the present, and this decline is associated with reductions in sea ice (35). Results from annual net surveys of krill populations around the South Shetland Islands suggest that the size of recruiting cohorts has declined, but the average time between recruitment events (4–5 y) has remained fairly consistent (Fig. 3B) (36). The decline in recruitment strength is an important factor determining the amount and mean size of krill available for predators and may be especially important for fledging penguins. Fledging masses of both chinstrap and Adélie penguins have declined (7), and therefore fledglings have smaller buffers against low krill availability when they depart from breeding colonies to start feeding independently. The decline in the reproductive capacity of the krill population, associated with the overall decline in sea ice, suggests that food resources for penguins and other predators may continue to decline in the near future.

The krill fishery is expanding and recorded its largest catch in more than a decade during the 2009–2010 fishing season (De-



**Fig. 2.** Schematic diagram of ecosystem perturbations in the Scotia Sea. From 1820–1860 Antarctic fur seal populations were extirpated rapidly after the discovery of South Shetland Islands (28–30). From 1900–1970 commercial whaling resulted in the near extirpation of all large baleen whales (31, 32). From 1960–1980 fishing for ice fishes and Notothenioids resulted in severe population declines in the Scotia Sea; populations remain well below historical levels (44). The serial depletion of krill predators was mirrored by large increases in Adélie and chinstrap penguin populations throughout the Scotia Sea region (6–9, 19–22, 42, 45, 46). From 1970–1990 climate-change effects were becoming evident in this highly altered ecosystem, with marked declines in sea ice, episodic recruitment in krill populations, and declining krill density. A pelagic trawl fishery for krill developed at this time. In the 2000s once-depleted marine mammal populations have recovered or are recovering; the krill fishery is expanding; rapid, well-documented climate change is progressing; and Adélie and chinstrap penguin populations are declining.

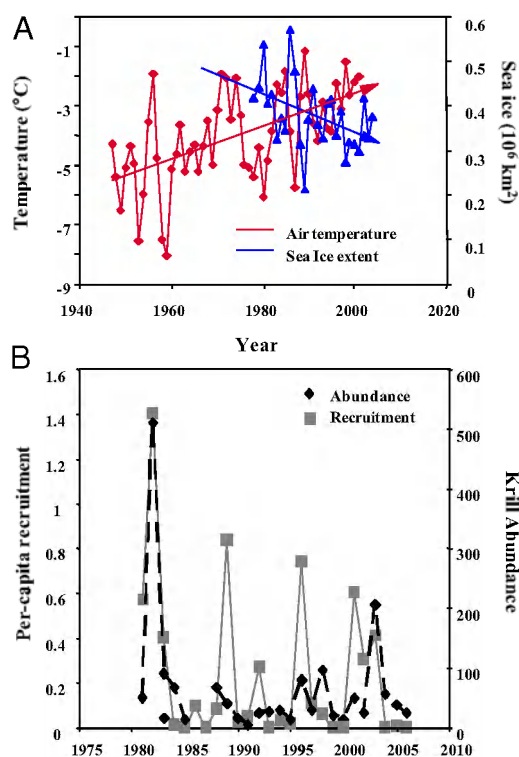
ember 1, 2009, through November 30, 2010) (39). Krill catches from around the WAP, South Shetland, South Orkney, and South Sandwich Islands during the past 10 fishing seasons have increased from 50,804 tons in 2002–2003, to 202,346 tons in

2009–2010 [catches reported through September 24, 2010 (39, 40)]. In addition, the Marine Stewardship Council's recent certification of one company's krill fishing as being sustainable\* and the introduction of new products (e.g., Omega-3 krill oil, a popular dietary supplement) suggest that the fishery may be poised to expand further in the near future (41).

There now is overwhelming evidence to confirm significant declines in both Adélie and chinstrap penguin populations throughout the WAP and Scotia Sea and therefore to discount the hypothesis that future changes in Adélie and chinstrap populations will be directly related to sea-ice extent and inversely related to each other (1–5). There is a contrasting report of an increase in population size for a small colony (200–400 pairs) of chinstrap penguins near Palmer Station in the WAP; however, data from this colony were unavailable, and figures in two papers summarizing these reported increases are not in agreement (3, 33). Thus, we excluded this colony from our analysis. Other chinstrap populations in this region have declined less than in any other areas inhabited by this species (Table 1), but the small sizes of all colonies in the WAP and the magnitude of declines elsewhere in the Scotia Sea suggest these colonies, near the southern limit of the chinstrap distribution, are not representative of processes occurring throughout the core of the chinstrap penguin's range (Table 1).

## Conclusion

If the warming trend in the WAP and Scotia Sea continues (25, 26), winter sea ice will be absent from much of this region in the near future, krill abundance may be reduced further, krill recruitment events will remain episodic (34–36), and Adélie and chinstrap penguin populations probably will continue to decline. These conditions are particularly critical for chinstrap penguins, because this species breeds almost exclusively in the WAP and Scotia Sea, where they have sustained declines in excess of 50% throughout their breeding range. Unlike Adélie penguins, which



**Fig. 3.** Large-scale changes in krill populations and physical conditions in the Scotia Sea. (A) Mean annual (January through December) air temperature ( $^{\circ}\text{C}$ ) and sea-ice extent ( $>15\%$  ice concentration) around the Antarctic Peninsula. Air temperature and sea-ice extent are significantly correlated ( $r \geq 0.7$ ;  $P < 0.05$ ) over the 30-y time series. (B) Per-capita krill recruitment and krill abundance for the Elephant Island region of the South Shetland Islands derived from annual net-tow surveys of the region (36).

\*Moody International (2010) Fisheries Management Certificate of Registration issued to Aker Biomarine, Oslo, Norway, and stating that the certificate holder "has been assessed and conforms with the requirements of the MSC Principles and Criteria for Sustainable Fishing." Available at <http://www.msc.org/track-a-fishery/certified/southern-ocean/aker-biomarine-antarctic-krill/assessment-downloads> (accessed March 18, 2011).



may be buffered by large, stable populations in the Ross Sea and Indian Ocean sector of Antarctica, chinstrap penguins have no southern breeding refuges. Given the magnitude of their global population decline, the predictions of further warming in this region (27), and the links between climate change and reductions in krill biomass (34), the primary food of the chinstrap penguin, we suggest that chinstrap penguin populations should be monitored carefully and their status reviewed by organizations such as the International Union for the Conservation of Nature. Long thought to be ecological winners in the climate-warming scenario (1–5), the chinstrap penguin instead may be among the most vulnerable species affected by a warming climate.

## Materials and Methods

Penguin colonies included in the population changes presented in Table 1 are listed here. Sources for the data used to construct Table 1 are indicated in parentheses. Adélie colonies from the WAP are at Berthelot Islands (9), Booth Island (9), Demaille Island (9), Fish Islands (9), Palmer Station (3), Petermann Island (9), and Yalour Islands (9). Adélie colonies from the South Orkney Islands

are at Shingle Cove (9), Signy Island (8), and Watson Point (4). Adélie colonies from the South Shetland Islands (excluding Admiralty Bay) are at Penguin Island (23) and Stranger Point (42). Adélie colonies from Admiralty Bay are at Point Thomas (6, 7) and Copacabana (6, 7). Specific Adélie colonies from the South Sandwich archipelago (10) are not identified. Chinstrap colonies from the WAP are at Eckener Point (9), Georges Point (9), Useful Island (9), Waterboat Point (9), and Booth Island (9). Chinstrap colonies from the South Orkney Islands are at Cape Robertson (42), Pirie Peninsula (42), Port Martin (23), Signy Island (8), South Coast (43), and Watson Peninsula (43). Chinstrap colonies from the South Shetland Islands (excluding Admiralty Bay) are at Cape Shirreff (7), Cecilia Island (9), Entrance Bay (9), Hannah Point (9), Penguin Island (23), President Head (9), and Vapour Col (43). Chinstrap colonies from Admiralty Bay are at Chabrier Rocks (24), Demay (6, 7), Uchatka (6, 7), and Patelnia (6, 7). Specific colonies from the South Sandwich archipelago (10) are not identified.

**ACKNOWLEDGMENTS.** This research was conducted as part of the US Antarctic Marine Living Resources Program of the National Oceanic and Atmospheric Administration (NOAA). It was supported by the NOAA and by several grants from the National Science Foundation's Office of Polar Programs. Further support and assistance was provided by the Lenfest Ocean Program of the Pew Charitable Trusts and the Oceanites Foundation.

- Fraser WF, Trivelpiece WZ, Ainley DG, Trivelpiece SG (1992) Increases in Antarctic penguin populations: Reduced competition with whales or a loss of sea-ice due to environmental warming? *Polar Biol* 11:525–531.
- Smith RC, et al. (1999) Marine ecosystem sensitivity to climate change. *Bioscience* 49: 393–404.
- Ducklow HW, et al. (2007) Marine pelagic ecosystems: The west Antarctic Peninsula. *Philos Trans R Soc Lond B Biol Sci* 362:67–94.
- McClintock J, Ducklow HW, Fraser W (2008) Ecological responses to climate change on the Antarctic Peninsula. *Am Sci* 96:302–310.
- Montes-Hugo M, et al. (2009) Recent changes in phytoplankton communities associated with rapid regional climate change along the western Antarctic Peninsula. *Science* 323:1470–1473.
- Trivelpiece WZ, Trivelpiece SG, Geupel GR, Kjelson NJ, Volkman NJ (1990) *Antarctic Ecosystems – Ecological Change and Conservation*, eds Kerry K, Hempel G (Springer, Berlin), pp 191–202.
- Hinke JT, Salvwick K, Trivelpiece SG, Watters GM, Trivelpiece WZ (2007) Divergent responses of *Pygoscelis* penguins reveal a common environmental driver. *Oecologia* 153:845–855.
- Forcada J, Trathan PN, Reid K, Murphy J, Croxall JP (2006) Contrasting population changes in sympatric penguin species in association with climate warming. *Glob Change Biol* 12:411–423.
- Lynch HJ, Naveen R, Fagan WF (2008) Censuses of penguin, blue-eyed shag (*Phalacrocorax atriceps*) and southern giant petrel (*Macronectes giganteus*) populations on the Antarctic Peninsula. *Mar Ornithol* 36:83–97.
- Poncet J (1997) *Report to Commissioner South Georgia and South Sandwich Islands, Seabird Species Account* (Government Printing Office, Falkland Islands).
- Volkman NJ, Pressler P, Trivelpiece W (1980) Diets of *Pygoscelis* penguins at King George Island, Antarctica. *Condor* 82:373–378.
- Jablonski B (1985) The diet of penguins on King George Island, South Shetland Islands. *Acta Zool Cracov* 29:117–186.
- Lishman GS (1985) The food and feeding ecology of Adélie penguins (*Pygoscelis adeliae*) and chinstrap penguins (*Pygoscelis antarctica*) at Signy Island, South Orkney Islands. *J Zool* 205:245–263.
- Trivelpiece WZ, Trivelpiece SG, Volkman NJ (1987) Ecological segregation of Adélie, gentoo, and chinstrap penguins at King George Island, Antarctica. *Ecology* 68: 351–361.
- Jensen JK, Bøveng PL, Bengtson JL (1998) Foraging modes of chinstrap penguins: Contrasts between day and night. *Mar Ecol Prog Ser* 165:161–172.
- Lynnes AS, Reid K, Croxall JP (2004) Diet and reproductive success of Adélie and chinstrap penguins: Linking responses of predators to prey population dynamics. *Polar Biol* 27:544–554.
- Rombola E, Marschoff E, Coria N (2006) Interannual study of chinstrap penguin's diet and reproductive success at Laurie Island, South Orkney Islands, Antarctica. *Polar Biol* 29:502–509.
- Laws R (1977) Seals and whales of the Southern Ocean. *Philos Trans R Soc Lond* 279: 81–96.
- Sladen WJL (1964) *Biologie Antarctique*, eds Carrick R, Holdgate MW, Prevost J (Hermann, Paris), pp 359–365.
- Conroy JWH (1975) *The Biology of Penguins*, ed Stonehouse B (University Park, Baltimore), pp 321–336.
- Croxall JP, Kirkwood ED (1979) *The Breeding Distribution of Penguins on the Antarctic Peninsula and Islands of the Scotia Sea* (British Antarctic Survey, Cambridge, UK).
- Croxall JP, Prince PA, Hunter I, McInnes SJ, Copestake PG (1984) *Status and Conservation of the Worlds Seabirds*, eds Croxall JP, Evans PGH, Schreiber RW (International Council for Bird Preservation, Cambridge, UK), pp 637–666.
- Sander M, Balbao M, Costa TC, Dos Santos ES, Petry MV (2007a) Decline of the breeding population of *Pygoscelis antarctica* and *Pygoscelis adeliae* on Penguin Island, South Shetland, Antarctica. *Polar Biol* 30:651–654.
- Sander M, Balbao M, Costa TC, Dos Santos ES, Petry MV (2007b) Recent decrease in chinstrap penguin (*Pygoscelis antarctica*) populations at two of Admiralty Bay's islets on King George Island, South Shetland Islands, Antarctica. *Polar Biol* 30:659–661.
- Vaughan DG, et al. (2003) Recent rapid regional climate warming on the Antarctic Peninsula. *Clim Change* 60:243–274.
- Meredith MP, King JC (2004) Rapid climate change in the ocean west of the Antarctic Peninsula during the second half of the 20th century. *Geophys Res Lett* 32:L19604.
- Christensen JH, et al. (2007) *Climate Change 2007: The Physical Basis. Contributions of Working Group I to the Fourth Assessment Report of the Intergovernmental Panel on Climate Change*, eds Solomon S, et al. (Cambridge Univ. Press, Cambridge, UK), pp 847–940.
- O'Gorman FA (1961) Fur seals breeding in the Falkland Islands Dependencies. *Nature* 192:914–916.
- Boyd IL (1993) Pup production and distribution of breeding Antarctic fur seals (*Arctocephalus gazelle*) at South Georgia. *Antarct Sci* 5:17–24.
- Hucke-Gaete R, Osman LP, Moreno CA, Torres D (2004) Examining natural population growth from near extinction: The case of the Antarctic fur seal at the South Shetlands, Antarctica. *Polar Biol* 27:304–312.
- Clapham PJ, Baker CS (2002) *Encyclopedia of Marine Mammals*, eds Perrin WF, Wursig B, Thewissen JGM (Academic, New York), pp 1328–1332.
- Reilly S, et al. (2004) Biomass and energy transfer to baleen whales in the South Atlantic sector of the Southern Ocean. *Deep Sea Res Part II Top Stud Oceanogr* 51: 1397–1409.
- Schofield O, et al. (2010) How do polar marine ecosystems respond to rapid climate change? *Science* 328:1520–1523.
- Loeb V, et al. (1997) Effects of sea-ice extent and krill or salp dominance on the Antarctic food web. *Nature* 387:897–900.
- Atkinson AA, Siegel V, Pakhomov E, Rothery P (2004) Long-term decline in krill stock and increase in salps within the Southern Ocean. *Nature* 432:100–103.
- Reiss CS, Cossio AM, Loeb V, Demer DA (2008) Variations in the biomass of Antarctic krill (*Euphausia superba*) around the South Shetland Islands, 1996–2006. *ICES J Mar Sci* 65:497–508.
- Emslie SD, Patterson WP (2007) Abrupt recent shift in  $\delta^{13}C$  and  $\delta^{15}N$  values in Adélie penguin eggshell in Antarctica. *Proc Natl Acad Sci USA* 104:11666–11669.
- Miller AK, Kappes MA, Trivelpiece SG, Trivelpiece WZ (2010) Foraging niche separation of breeding gentoo and chinstrap penguins, South Shetland Islands, Antarctica. *Condor* 112:684–695.
- Scientific Committee for the Conservation of Antarctic Marine Living Resources (2010) *Report of the Twenty-Ninth Meeting of the Scientific Committee, Hobart, Australia, October 25–29, 2010* (Scientific Committee for the Conservation of Antarctic Marine Living Resources, Hobart, Australia).
- Commission for the Conservation of Antarctic Marine Living Resources (2010) *Statistical Bulletin*, Vol 22.
- Nicol S, Foster J, Kawaguchi S (2011) The fishery for Antarctic krill – recent developments. *Fish Fish* 10.1111/j.1467-2979.2011.00406.x.
- Woehler EJ, Croxall JP (1997) The status and trends of Antarctic and sub-Antarctic seabirds. *Mar Ornithol* 25:43–66.
- Barbosa A, Moreno J, Potti J, Merino S (1997) Breeding group size, nest position and breeding success in the chinstrap penguin. *Polar Biol* 18:410–414.
- Kock KH, Jones CD (2005) Fish stocks in the southern Scotia Arc region: A review and prospects for future research. *Rev Fish Sci* 13:75–108.
- Croxall JP, Trathan PN, Murphy EJ (2002) Environmental change and Antarctic seabird populations. *Science* 297:1510–1514.
- Trathan PN, Croxall JP, Murphy EJ (1996) Dynamics of Antarctic penguin populations in relation to inter-annual variability in sea-ice distribution. *Polar Biol* 16:321–330.