

A National Statistics Publication for Scotland



**Scottish Sea  
Fisheries  
Statistics  
2009**



**natural  
scotland**  
SCOTTISH GOVERNMENT

## Scottish Sea Fisheries Statistics, 2009

### Contents

#### Vessels

Overview of the Scottish Fishing Fleet	1-4
Table 1. Active Scottish based vessels, power, by overall length group, 31st December 1999 to 2009	5
Chart 1. Active Scottish based vessels, 1999 to 2009	5
Table 2. Active Scottish based vessels, tonnage and power by overall length group and age group, 31st December 2009	6
Chart 2. Landings by Scottish based vessels, 1999 to 2009	6
Chart 3. Scottish based vessels by type, 1999 to 2009	6
Table 3. Active Scottish based vessels: number, tonnage and power, by overall length group, 31st December 2009	7
Table 4. Active Scottish based vessels, by main fishing method, 31st December 1999 to 2009	7
Table 5. Active Scottish based vessels, by main fishing method and overall length group, 31st December 2009	7
Table 6. Active Scottish based vessels by base district and overall length group, 31st December 2009	8
Table 7. Changes to the Scottish based over 10 metres fleet , 31st December 2008 to 2009	8
Table 8. Scottish based sea fishing licences by category, 31st December 2007 to 2009	8
Table 9. Scottish based over 10 metres sea fishing licences by category, 31st December 2008 to 2009	8
Table 10. Effort of regulated gears in the Cod Recovery Zone in kw days ('000) by Scottish based over 10 metres vessels by area and gear type, 2001 to 2009	9
Chart 4. Effort of selected regulated gears in the Cod Recovery Zone in kw days by Scottish based over 10 metres vessels in the North Sea and West Coast by gear type, 2001 to 2009	9

#### Employment

Table 11. Employment in sea fishing, and Scottish labour force, 2002 to 2009	10
Table 12. Value of sea fish landings into Scotland by Scottish based vessels; fishermen employed, by selected region, 2009	10
Table 13. Number of fishermen employed on Scottish based vessels, 2005 to 2009	10
Table 14. Number of fishermen employed by district and employment status, 2009	10
Chart 5. Number of fishermen employed on Scottish based vessels, 1969 to 2009	10

#### Landings

Overview of Catches and Landings	11-17
Map Figure 1: Volume landed by district, 2009; Figure 2: Value landed by district, 2009	18
Table 15. Total Allowable Catches, UK quotas and liveweight landed by UK vessels, 2005 to 2009	19-21
Chart 6. UK percentage uptake of main quota stocks, 2009	21
Table 16. Fixed quota units by sea area and country, 1st January, 2010	21
Table 17. Live weight and value of landings, by species type, 2005 to 2009	22
Table 18. Voyages and landings by Scottish based vessels by landing district, 2008 and 2009	22
Table 19. Liveweight and value of landings into the UK by UK vessels, by main species and country of landing, 2005 to 2009	23
Table 20. Liveweight and value of landings into Scotland by UK vessels, by main species, 2005 to 2009	23
Table 21. Liveweight and value of landings into Scottish ports by UK vessels, by landing district and species type, 2005 to 2009	24
Table 22. Disposal of sea fish landed into Scotland by UK vessels, 2005 to 2009	24
Table 23. Liveweight and value of landings into Scotland by UK vessels, by landing district and main species, 2009	25,26
Chart 7. Average prices of landings into Scotland by UK vessels, by species type, 1992 to 2009	25
Chart 8. Liveweight landings into Scotland by UK vessels by species type, 1969 to 2009	26
Chart 9. Average prices of landings into Scotland, by species type and month, 2009	27
Table 24. Liveweight and value of landings into Scotland by foreign vessels, by main species, 2005 to 2009	27
Table 25. Liveweight and value of landings into Scotland by foreign vessels, by country of origin, 2005 to 2009	27
Table 26. Liveweight and value of landings into Scotland by foreign vessels, by landing district, 2005 to 2009	27
Table 27. Liveweight and value of landings by Scottish based vessels, by main species, 2005 to 2009	28
Chart 10. Value of landings at 2008 prices per Scottish based over 10 metres vessel, by vessel type, 2000 to 2009	29
Table 28. Liveweight and value of landings abroad by Scottish based vessels, by country of landing, 2005 to 2009	29
Table 29. Liveweight and value of landings from specified ICES areas by Scottish based vessels, by main species, 2009	29
Table 30. Liveweight and value of landings by Scottish based vessels, by main species and overall vessel length group, 2009	30
Chart 11. Value of landings at 2008 prices by Scottish based vessels by species type, 2000 to 2009	30
Table 31. Liveweight and value of landings by Scottish based vessels, by main species and gear, 2009	31
Table 32. Key commercial quota stocks landed by Scottish based vessels, 2005 to 2009	32
Chart 12. Liveweight landings by Scottish based vessels by quarter, 2009	32

Annex 1 Map of port districts and ports in Scotland	33
Annex 2 ICES fishing areas around the UK coastline	34



## 1. Overview of the Scottish Fishing Fleet

This chapter brings together information on Scottish fleet structure, effort and number of fishermen employed in Scotland. A summary description of how the UK fleet is regulated is provided as background to assist interpretation of the statistics.

### 1.1 The regulation of the UK Fleet

The structure and capacity of the UK and Scottish fishing fleets has, since 1983, been dictated primarily by the EU Common Fisheries Policy (CFP). Between 1997 and 2002, fleet structure was managed within the CFP through the fourth Multi Annual Guidance Programme (MAGP) designed to tailor fleet capacity to available fish stocks across the EU. Under this programme, the UK fishing fleet was divided into eight segments, defined primarily by broad fishing method<sup>1</sup>, and capacity limits or effort reduction targets set for each segment. MAGP IV has now ended and has been replaced by global effort ceilings at member state level controlled through a system of entry/exit controls.

At a UK level, restrictive licensing has been the main Government instrument to bring the activities of the UK fishing fleet into line with MAGP and UK aims on fleet and catch management. Aside from a few limited exceptions, all vessels engaged in commercial sea fishing are required to hold a licence issued by UK fisheries departments. There are a finite number of licences in existence and no new licences are made available. This places a ceiling on the total number of vessels in the UK fishing fleet. In order to licence new vessels, fishermen must acquire one or more existing licences from other previously licensed vessels. Capacity penalties are applied when licences are transferred, or aggregated to form a larger licence unit, and these, together with the restricted number of licences on issue, form a mechanism resulting in reductions in the capacity of the UK fleet.

In combination with the UK restrictive licensing controls, successive decommissioning schemes in 1994-1997, 2001-2002 and 2003-2004, designed to conserve vulnerable whitefish stocks, and particularly cod, have led to reductions in the capacity of the UK fleet.

In addition to the controls on overall fleet size in the years before 2009, European Union (EU) regulations set limits on the numbers of days at sea in the cod recovery zone for fishing vessels of 10 metres and over, when using certain types of regulated gear. Under the EU's new cod recovery plan, since 2009 member states now receive allocations of fishing effort for particular gear types, measured in kilowatt (kW) days, and are free to decide how to allocate fishing days to individual vessels. Fisheries administrations monitor effort uptake by vessels using regulated fishing gears in and around the cod recovery zone.

---

<sup>1</sup> Pelagic Gears; Beam trawl; Demersal seines and nephrops; Lines & Nets; Shellfish-Mobile; Shellfish-Fixed; Distant Water; and vessels under 10 metres.

## 1.2 The Scottish Fishing Fleet Size

The number of active fishing vessels based in Scotland stood at 2,174 vessels in 2009 (Table I below), the smallest fleet size ever recorded. The number of vessels based at 11 of the 18 Scottish districts decreased, while the number of vessels based at 5 districts (Eyemouth, Aberdeen, Orkney, Kinlochbervie and Oban) increased (Table I below).

*Table I: Changes in the number of active Scottish based vessels 2008-09, by district.*

District	Number of active vessels		Change
	2008	2009	
Eyemouth	95	100	5
Pittenweem	120	117	-3
Aberdeen	92	96	4
Peterhead	107	100	-7
Fraserburgh	226	220	-6
Buckie	87	85	-2
Scrabster	129	129	0
Orkney	150	152	2
Shetland	182	182	0
Stornoway	267	258	-9
Lochinver	15	14	-1
Kinlochbervie	23	24	1
Ullapool	85	82	-3
Mallaig	65	59	-6
Oban	123	129	6
Campbeltown	137	135	-2
Ayr	157	149	-8
Portree	145	143	-2
<b>Total</b>	<b>2,205</b>	<b>2,174</b>	<b>-31</b>

**Source:** Table 6 and equivalent 2008 figures.

## 1.3 The Scottish Fishing Fleet by Length

The Scottish fleet comprised 1,483 10 metres and under vessels (Table 1) which accounts for over two thirds of the Scottish fleet. At 691 vessels the over 10 metres vessel fleet in 2009 was 27 per cent smaller than in 2000 (Table 1), reflecting the impact of the two decommissioning schemes in 2001-02 and 2003-04. The demersal sector comprised 40 per cent (274 vessels) of the over 10 metres fleet, the pelagic sector accounted for 4 per cent (25 vessels) of the fleet and the shellfish sector represented 57 per cent (392 vessels) of the total over 10 metres fleet (calculated from Table 4). The number of vessels in each sector has decreased by 41 per cent, 34 per cent and 12 per cent for the demersal, pelagic and shellfish sectors respectively since 2000, prior to the introduction of the decommissioning schemes, (Chart 3).

The total registered engine power of the 10 metres and under vessels in 2009 was 78 thousand kW (Table 1), 19 per cent of the total power of the Scottish fleet. The average power of the 10 metres and under vessels was 53 kW per vessel (Table 2). The total power of the over 10 metres fleet in 2009 was 337 thousand kW (Table 1), a decrease of 1 per cent since 2005, the first year by which owners had declared their true engine power. In contrast the average power of the over 10 metres vessels was 487 kW per vessel, an increase of 3 per cent since 2005 (Table 1). These opposing trends of decreasing total fleet engine capacity and increasing average engine power per vessel can be explained by a combination of factors: (i) the reduction in the number of vessels in the over 10 metres fleet (Table 1); (ii) the “natural wastage” of licensed engine power that often accompanies the aggregation of several licences onto a single vessel<sup>2</sup>.

In terms of vessel capacity the over 10 metres fleet dominates, with a total tonnage of 119,459 tonnes, 96 per cent of the total tonnage of the Scottish fleet.

### **1.3.1 The Scottish Fishing Fleet by Age**

Fifty per cent of the Scottish fleet was built within the past 25 years with 13 per cent of the fleet built within the last 10 years (calculated from Table 2). Vessels under 10 years account for 40 per cent of the total tonnage of the Scottish fleet, substantially more than any other age category (calculated from Table 2). Similarly vessels under 10 years account for a appreciable proportion, 35 per cent, of the total power of the fleet (calculated from Table 2).

### **1.3.2 Regulated Effort by the Scottish Fleet**

Effort by the Scottish over 10 metres fleet using regulated gears was dominated by whitefish and *Nephrops* gears in the North Sea and West of Scotland (Table 10). Effort using whitefish gear stood at 12.2 million kW days in the North Sea and 2.2 million kW days in the West of Scotland in 2009 (Table 10). Between 2001 and 2004 in the North Sea and from 2001 to 2005 in the West of Scotland, whitefish gear effort dropped substantially, by 59 per cent and 69 per cent respectively. These decreases in effort reflect the reduction in fleet capacity resulting from the decommissioning schemes in 2001-02 and 2003-04. Following these substantial reductions, effort continued to decline albeit less rapidly until 2007 (Chart 4). Since 2007, effort has increased slightly, by 11 per cent in the North Sea and 12 per cent in the West of Scotland (Chart 4).

---

<sup>2</sup> Occurs when the sum of the engine power capacities attached to the licences used in an aggregation, exceeds the maximum engine power of the vessel on which the aggregate licence is used. The excess engine power entitlement is then effectively lost from the fleet total.

Effort by the Scottish over 10 metres fleet using *Nephrops* gear in 2009 was 8.3 million kW days in the North Sea and 4.5 million kW days in the West of Scotland (Table 10). Compared with 2008, *Nephrops* gear effort decreased by 9 per cent in the North Sea and by 6 per cent in the West of Scotland (Table 10). Looking at the longer term trends, *Nephrops* effort in the North Sea rose markedly, by 87 per cent between 2001 and 2003, and has been roughly stable since 2003 (Chart 4). In the West of Scotland, *Nephrops* effort has been comparatively stable since 2005, after peaking in 2003 at 5.8 million kW days and dipping to 4.6 million kW days in 2005 (Chart 4).

## **1.4 Employment**

The number employed in the Scottish catching sector was 5,409 in 2009 (Table 11), a decrease of 39 (1 per cent) compared with 2008 and the lowest level ever recorded. As well as the small decrease in overall employment, there has been a shift from regular to irregular work in this sector, an increase of 17 per cent on 2008 (Table 13). At a district level Fraserburgh has the most fishermen in regular and total employment.

Table 1. Active<sup>(1)</sup> Scottish based vessels and power, by overall length group, 31st December 1999 to 2009

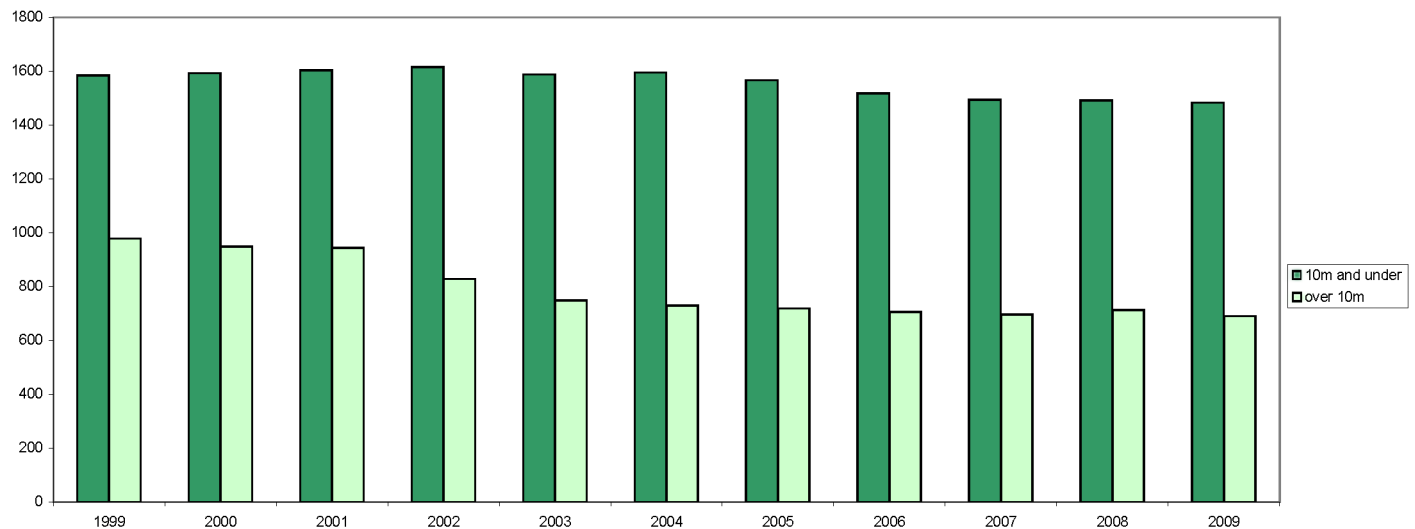
		10 metres & under	>10 <15 metres	15<20 metres	20<25 metres	25<30 metres	30<35 metres	35 metres & over	Total	Over 10 metres	
										Number	Average <sup>(2)</sup>
Number	1999	1,584	297	263	208	128	19	64	2,563	979	20.33
	2000 (r)	1,593	286	253	199	125	22	64	2,542	949	20.50
	2001 (r)	1,604	280	259	202	118	23	62	2,548	944	20.52
	2002 (r)	1,615	274	235	148	91	18	62	2,443	828	20.18
	2003 (r)	1,588	270	223	117	66	16	57	2,337	749	19.90
	2004 (r)	1,595	269	212	113	64	17	55	2,325	730	19.92
	2005 (r)	1,567	270	204	112	61	15	57	2,286	719	19.92
	2006	1,518	273	193	110	61	16	53	2,224	706	19.73
	2007	1,494	273	187	109	59	15	54	2,191	697	19.74
	2008	1,492	266	191	111	66	19	60	2,205	713	20.20
	2009	1,483	257	192	108	67	17	50	2,174	691	20.05
										Power	Average <sup>(3)</sup>
Total power (kW)	1999	71,120	35,734	61,524	83,593	69,632	15,002	102,209	438,814	367,694	375.58
	2000 (r)	76,082	34,878	60,289	82,024	69,701	17,601	106,798	447,373	371,291	391.24
	2001 (r)	79,189	35,055	64,844	85,258	66,966	19,362	120,971	471,644	392,455	415.74
	2002 (r)	80,489	35,146	60,512	65,161	53,578	14,093	128,010	436,989	356,499	430.55
	2003 (r)	80,652	35,976	58,113	52,524	38,883	13,215	141,665	421,028	340,376	454.44
	2004 (r)	81,562	36,811	55,675	50,857	37,618	13,886	147,841	424,250	342,688	469.44
	2005 (r)	82,073	37,413	54,694	50,324	35,466	11,854	148,895	420,718	338,645	470.99
	2006	80,131	38,201	51,802	49,751	35,440	13,174	135,966	404,464	324,334	459.40
	2007	78,753	38,698	51,316	49,296	34,431	11,719	137,190	401,402	322,650	462.91
	2008	78,692	38,422	53,320	50,510	38,044	13,203	148,558	420,749	342,057	479.74
	2009	78,035	37,313	53,086	49,747	39,456	12,214	144,991	414,841	336,806	487.42

Scottish based vessels are those licensed at a Scottish port; Scottish registered vessels are those registered at a Scottish port on the Register of Shipping and Seamen. From the beginning of 1993 there was a requirement that all 10 metres and under vessels should be licensed.

(1) During 2006, it was discovered that the UK Core Vessel file, the official source of information on UK vessels, had been notified of Scottish vessels becoming inactive while they were still recorded on FIN as active. An exercise was conducted to take this information on board into FIN, leading to an appreciable drop in the number of active vessels recorded. Because this issue affected the figures for earlier years, figures have been revised.

(2) Vessel average length figures have been re-calculated retrospectively.

(3) Engine power statistics in earlier years have been underestimated to an unknown degree, due to the inclusion of vessels with engines operating at a higher power than permitted on their licences. In November 1999, in response to this problem, Fisheries Departments introduced special (concessionary) licensing arrangements and a timetable for compliance with engine power controls. Under the compliance timetable licence holders who have admitted to under declaration, had until the end of 2004 to ensure that either: (i) their true engine power is registered and to have acquired enough licence entitlement to cover this, or (ii) to have declared their engine to the figure on their licence. In practice, most chose to acquire extra licences to cover their operational engine power. Consequently, it needs to be borne in mind that, after 1999, the trends average in engine power shown in Table 1 are complicated by the effect of an increasing number of owners declaring their true, higher, engine power.

Chart 1. Active<sup>(1)</sup> Scottish based vessels, 1999 to 2009

<sup>(1)</sup> See footnote to Table 1

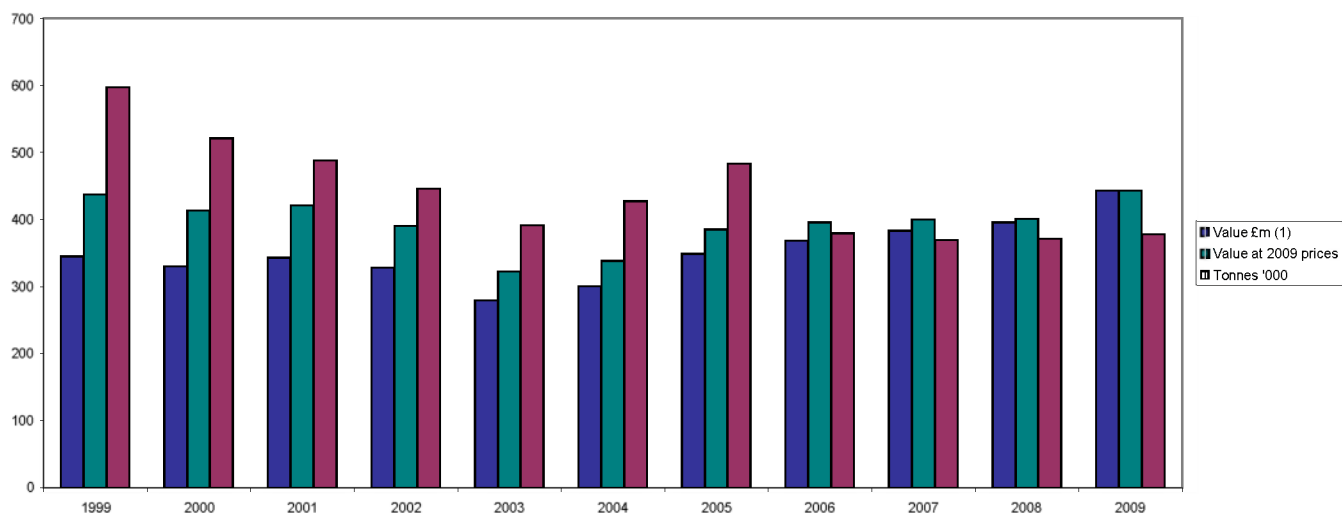


Table 2. Active Scottish based vessels, tonnage and power by overall length group and age group, 31st December 2009

	10 metres & under	>10 <15 metres	15<20 metres	20<25 metres	25<30 metres	30<35 metres	35 metres & over	Total	Over 10 metres
Number									
Under 10 years	197	23	30	16	7	1	19	293	96
10<15	117	14	8	16	11	3	9	178	61
15<20	188	33	10	8	6	2	2	249	61
20<25	226	55	22	29	20	1	4	357	131
25<30	181	35	20	18	6	2	1	263	82
30<35	127	24	20	9	7	1	4	192	65
35 years & over	182	59	80	12	9	5	9	356	174
Not known	265	14	2	-	1	2	2	286	21
Total	1,483	257	192	108	67	17	50	2,174	691
Average age (years)	23	26	28	22	22	27	18	24	25
Total tonnage									
Under 10 years	768	532	4,443	3,698	2,518	325	37,920	50,204	49,436
10<15	540	242	855	3,302	4,005	1,664	11,095	21,703	21,163
15<20	648	516	980	1,476	1,543	587	782	6,532	5,885
20<25	806	916	2,343	4,973	4,807	375	1,931	16,151	15,345
25<30	694	549	2,018	2,732	1,163	466	477	8,099	7,405
30<35	502	350	1,267	1,190	1,246	315	1,495	6,365	5,863
35 years & over	705	886	4,027	1,327	1,388	1,126	2,862	12,321	11,616
Not known	690	222	210	-	209	460	1,647	3,437	2,748
Total	5,353	4,212	16,144	18,697	16,878	5,318	58,209	124,812	119,459
Average tonnage	4	16	84	173	252	313	1,164	57	173
Total power (kW)									
Under 10 years	14,724	5,802	12,018	9,442	5,636	750	96,227	144,598	129,874
10<15	10,091	2,562	2,542	9,312	8,025	3,193	28,175	63,901	53,809
15<20	10,316	4,845	3,187	3,544	3,150	1,631	2,250	28,923	18,607
20<25	11,450	8,276	6,826	12,540	11,187	855	4,421	55,554	44,104
25<30	8,402	4,334	6,370	7,475	3,007	1,252	1,790	32,629	24,227
30<35	6,087	2,662	4,874	3,317	3,771	736	3,647	25,094	19,007
35 years & over	6,481	6,249	16,589	4,118	4,232	2,754	5,746	46,169	39,688
Not known	10,484	2,583	681	-	448	1,043	2,735	17,974	7,490
Total	78,035	37,313	53,086	49,747	39,456	12,214	144,991	414,841	336,806
Average power	53	145	276	461	589	718	2,900	191	487

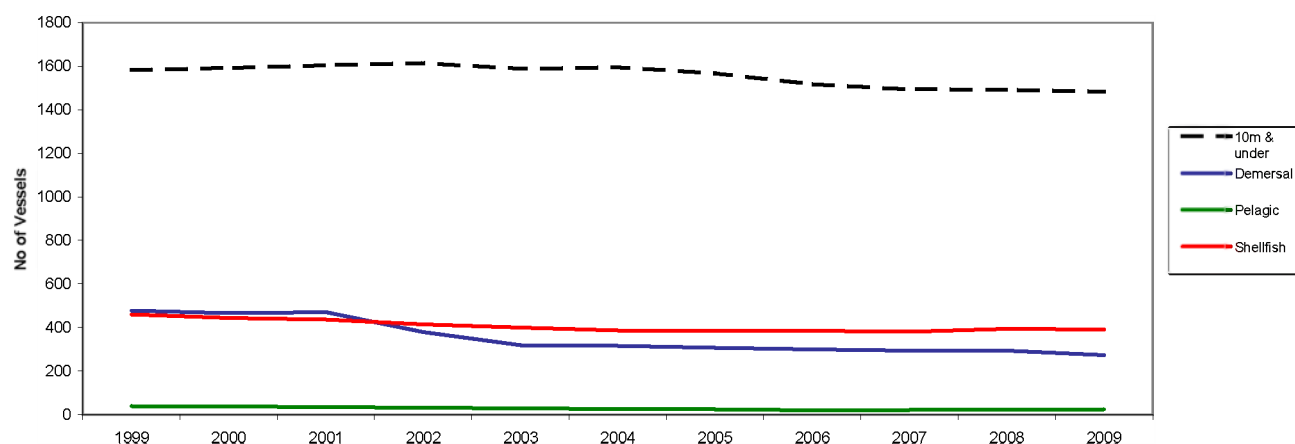
Year on year tonnage comparisons should be made with caution, since these figures take no account of the phased replacement of GRT with GT during the period 1996-2003.

Chart 2. Landings by Scottish based vessels, 1999 to 2009



(1) When the Register of Buyers and Sellers (RBS) was introduced in September 2005, Sales Notes were not initially required for sales of shellfish and information on the value of such landings is consequently missing. The value has therefore been estimated for a number of landings, mostly shellfish, relating to voyages starting on or after 1 September 2005.

Chart 3. Scottish based vessels by type, 1999 to 2009



From the beginning of 1993 there was a requirement that all 10 metres and under vessels should be licensed.

Table 3. Active Scottish based vessels: number, tonnage and power by overall length group, 31st December 2009

Length	Tonnes	Vessels	Total tonnes
10m & under	<40	1,483	5,353
>10 <15	<40	252	3,993
	40<60	5	219
	Total	257	4,212
15<20	<40	20	717
	40<60	56	2,686
	60<80	31	2,138
	80<100	20	1,786
	100<150	45	5,404
	150<200	20	3,413
	Total	192	16,144
20<25	40<60	1	57
	60<80	1	72
	80<100	5	447
	100<150	32	4,287
	150<200	43	7,509
	200<300	22	5,059
	300<500	4	1,266
	Total	108	18,697
25<30	100<150	4	501
	150<200	15	2,567
	200<300	29	6,866
	300<500	19	6,945
	Total	67	16,878
30<35	150<200	2	356
	200<300	8	1,913
	300<500	4	1,385
	Over 500	3	1,664
	Total	17	5,318
35 & over	200<300	5	1,426
	300<500	17	6,553
	Over 500	28	50,230
	Total	50	58,209
Total	Under 40	1,755	10,063
	40<60	62	2,962
	60<80	32	2,210
	80<100	25	2,233
	100<150	81	10,191
	150<200	80	13,845
	200<300	64	15,264
	300<500	44	16,149
	Over 500	31	51,894
	Total	2,174	124,812

Length	kW	Vessels	Total power
10m & under	<40	798	14,832
	40<75	315	17,579
	75<150	289	29,543
	150<225	64	11,629
	225<375	17	4,452
	Total	1,483	78,035
>10<15	40<75	26	1,645
	75<150	140	15,360
	150<225	59	11,014
	225<375	28	7,444
	375<550	4	1,851
	Total	257	37,313
15<20	75<150	15	1,939
	150<225	58	11,156
	225<375	88	26,405
	375<550	31	13,586
	Total	192	53,086
20<25	150<225	1	221
	225<375	32	10,988
	375<550	54	24,627
	550<750	20	13,049
	Over 750	1	862
	Total	108	49,747
25<30	150<225	2	442
	225<375	2	669
	375<550	25	11,979
	550<750	34	22,069
	Over 750	4	4,297
	Total	67	39,456
30<35	375<550	5	2,409
	550<750	7	4,795
	Over 750	5	5,010
	Total	17	12,214
35 & over	375<550	3	1,514
	550<750	12	7,833
	Over 750	35	135,644
	Total	50	144,991
Total	Under 40	798	14,832
	40<75	341	19,224
	75<150	444	46,843
	150<225	184	34,462
	225<375	167	49,957
	375<550	122	55,965
	550<750	73	47,746
	Over 750	45	145,813
	Total	2,174	414,841

Year on year tonnage comparisons should be made with caution, since these figures take no account of the phased replacement of GRT with GT during the period 1996-2003.

Table 4. Active<sup>(1)</sup> Scottish based vessels by main fishing method, 31st December 1999 to 2009

	10m & under				Over 10m														Total
	Nephrops trawl	Creel fishing	Other	Total	Pelagic				Demersal					Shellfish			Total		
					Purse seine	Pelagic trawl	Other	Total	Trawl	Seine	Lines	Other	Total	Nephrops trawl	Other	Total			
1999 (r)	73	1,391	120	1,584	21	19	-	40	374	87	4	14	479	237	223	460	979	2,563	
2000 (r)	88	1,383	122	1,593	18	20	-	38	366	85	4	11	466	223	222	445	949	2,542	
2001 (r)	94	1,390	120	1,604	10	26	-	36	378	79	5	9	471	221	216	437	944	2,548	
2002 (r)	94	1,399	122	1,615	9	24	-	33	319	44	6	11	380	204	211	415	828	2,443	
2003 (r)	99	1,371	118	1,588	8	21	-	29	272	33	4	11	320	193	207	400	749	2,337	
2004 (r)	103	1,371	121	1,595	6	20	-	26	265	33	9	10	317	181	206	387	730	2,325	
2005 (r)	100	1,347	120	1,567	6	19	-	25	255	34	9	10	308	177	209	386	719	2,286	
2006	98	1,299	121	1,518	5	16	-	21	247	33	10	10	300	171	214	385	706	2,224	
2007	95	1,292	107	1,494	5	17	-	22	241	35	9	9	294	172	209	381	697	2,191	
2008	86	1,296	110	1,492	4	20	-	24	234	35	14	12	295	188	206	394	713	2,205	
2009	81	1,288	114	1,483	4	21	-	25	214	37	15	8	274	194	198	392	691	2,174	

From the beginning of 1993 there was a requirement that all 10 metres and under vessels should be licensed.

<sup>(1)</sup> See footnote to Table 1

Table 5. Active Scottish based vessels, by main fishing method and overall length group, 31st December 2009

	10 metres & Under	>10<15 metres	15<18 metres	18<25 metres	25<35 metres	35<50 metres	50 metres & over	Total
Demersal single trawl	24	16	26	81	32	11	-	190
Demersal pair trawl	-	-	4	11	8	1	-	24
Seine net	-	-	2	24	10	1	-	37
Lines	-	-	-	-	10	5	-	15
Demersal gill nets	7	1	-	-	2	3	-	13
Demersal twin/mult trawl	1	-	-	10	7	-	-	18
Beam trawl	1	1	-	1	3	2	-	8
Other demersal	-	-	-	1	-	1	-	2
Demersal total	33	18	32	128	72	24	-	307
Purse seine	-	-	-	-	-	1	3	4
Pelagic trawl	-	-	-	-	-	-	21	21
Other pelagic	-	-	-	-	-	-	-	-
Pelagic total	-	-	-	-	-	1	24	25
Creel fishing	1,288	108	6	3	-	-	-	1,405
Nephrops trawl	81	103	56	32	3	-	-	275
Mechanical dredging	14	23	23	20	9	1	-	90
Suction dredging	1	1	-	-	-	-	-	2
Shell fishing by hand	66	4	-	-	-	-	-	70
Shellfish total	1,450	239	85	55	12	1	-	1,842
Total	1,483	257	117	183	84	26	24	2,174

Table 6. Active Scottish based vessels by base district and overall length group, 31st December 2009

	10 metres & Under	>10 <15 metres	15<18 metres	18<25 metres	25<35 metres	35<50 metres	50 metres & over	Total
Eyemouth	73	16	3	7	1	-	-	100
Pittenweem	100	13	2	2	-	-	-	117
Aberdeen	81	8	-	5	2	-	-	96
Peterhead	46	-	2	24	19	5	4	100
Fraserburgh	102	11	14	59	22	1	11	220
Buckie	45	5	3	25	5	2	-	85
Scrabster	110	12	2	3	2	-	-	129
Total east coast	557	65	26	125	51	8	15	847
Orkney	110	31	4	1	5	1	-	152
Shetland	134	14	3	18	5	-	8	182
Sornoway	203	30	20	4	-	-	1	258
Total Islands	447	75	27	23	10	1	9	592
Lochinver	11	1	-	2	-	-	-	14
Kinlochbervie	20	2	-	2	-	-	-	24
Ullapool	45	14	7	1	6	9	-	82
Mallaig	32	5	13	8	1	-	-	59
Oban	89	23	11	6	-	-	-	129
Campbeltown	83	33	16	3	-	-	-	135
Ayr	78	19	15	13	16	8	-	149
Portree	121	20	2	-	-	-	-	143
Total west coast	479	117	64	35	23	17	-	735
Total	1,483	257	117	183	84	26	24	2,174

A district is a geographical area within which there are a number of creeks or ports.

Table 7. Changes to the Scottish based, over 10 metres fleet, 31st December 2008 to 2009

	>10 <15 metres	15<20 metres	20<25 metres	25<30 metres	30<35 metres	35 metres & over
Active Scottish vessels, 31st December 2008	266	191	111	66	19	60
Continued to be based in Scotland	248	185	106	65	17	48
Transferred to another UK port	5	5	-	1	1	9
Became inactive	13	1	5	-	1	3
Transferred from another UK port	6	5	-	-	-	-
Became active	1	-	-	1	-	1
Newly built vessels	2	3	1	1	-	1
Change of vessel length category	-	-1	1	-	-	-
Active Scottish vessels, 31st December 2009	257	192	108	67	17	50

Table 8. Scottish based sea fishing licences by category, 31st December 2007 to 2009

	Vessel licences				Entitlements				Total			
	Category A	Category B	Category C	<=10m	Category A	Category B	Category C	<=10m	Category A	Category B	Category C	<=10m
2007	552	81	64	1,494	54	4	7	100	606	85	71	1,594
2008	566	80	67	1,492	47	2	5	73	613	82	72	1,565
2009	548	79	64	1,483	63	6	7	154	611	85	71	1,637

In 2009, includes 25 pelagic licences (category A) on vessels.

Category A licences allow full access to all stocks available to UK vessels.

Category B licences allow only restricted access to some UK available stocks.

Category C licences further restrict the range of stocks that can be fished.

Table 9. Scottish based, over 10 metres sea fishing licences, by category, 31st December 2008 to 2009

	On vessels		
	Category A	Category B	Category C
Scottish based licences, 31st December 2008	566	80	67
Remained on Scottish based vessels	517	77	64
Became Scottish entitlements	14	3	2
Transferred/aggregated to UK vessels	35	-	1
Other losses	-	-	-
Placed on vessel from Scottish entitlements	31	2	-
Transferred/aggregated from other UK ports	-	-	-
Scottish based licences, 31st December 2009	548	79	64

	Entitlements		
	Category A	Category B	Category C
Scottish based entitlements, 31st December 2008	47	2	5
Remained as Scottish based entitlements	16	2	3
Used to licence Scottish based vessels	13	-	-
Used to licence other UK vessels	18	-	2
Other losses	-	-	-
Became entitlements from Scottish vessels	47	4	4
Became entitlements from other UK vessels	-	-	-
Scottish based entitlements, 31st December 2009	63	6	7

Table 10 : Effort of regulated gears in the Cod Recovery Zone in kwDays ('000) by Scottish based over 10 metre vessels by area and gear type, 2001 to 2009

	2001	2002	2003	2004	2005	2006	2007	2008	2009
<b>North Sea</b>									
Whitefish gear	30,655	24,341	16,080	12,684	12,158	11,661	11,023	12,176	12,246
Nephrops gear	5,352	8,538	10,011	9,486	9,108	8,678	8,887	9,191	8,348
Industrial Trawl	4	-	6	5	2	-	12	-	33
Beam Trawl with mesh >= 120 mm	-	972	867	695	731	603	350	69	53
Beam Trawl with mesh >= 80 and < 120 mm	6,049	4,584	3,766	4,610	4,185	3,110	2,801	1,355	561
Gill Nets	63	47	197	197	166	294	321	417	376
Trammel Nets	-	-	-	-	-	-	-	-	-
Long Lines	89	104	57	4	-	8	1	277	621
<b>West of Scotland</b>									
Whitefish gear	8,523	7,566	5,723	4,502	2,635	2,100	1,986	1,990	2,229
Nephrops gear	4,903	4,797	5,761	5,335	4,586	4,381	4,692	4,804	4,525
Industrial Trawl	4	2	30	7	41	-	-	-	-
Beam Trawl with mesh >= 120 mm	-	-	60	151	120	81	2	-	-
Beam Trawl with mesh >= 80 and < 120 mm	85	104	-	-	-	-	-	-	-
Gill Nets	14	7	47	67	39	1	1	6	-
Trammel Nets	1	-	1	-	-	-	-	-	-
Long Lines	88	182	125	148	307	371	519	379	703
<b>Irish Sea</b>									
Whitefish gear	119	84	93	32	4	3	-	-	-
Nephrops gear	34	18	45	94	34	7	17	22	31
Industrial Trawl	-	-	-	-	-	-	-	-	-
Beam Trawl with mesh >= 120 mm	-	-	-	-	-	-	-	-	-
Beam Trawl with mesh >= 80 and < 120 mm	-	-	-	-	-	-	1	1	-
Gill Nets	-	-	-	-	1	-	-	-	-
Trammel Nets	-	-	-	-	-	-	-	-	-
Long Lines	13	-	3	-	-	-	-	-	-

Chart 4. Effort of selected regulated gears in the Cod Recovery Zone in kwDays ('000) by Scottish based over 10 metre vessels by area and gear type, 2001 to 2009

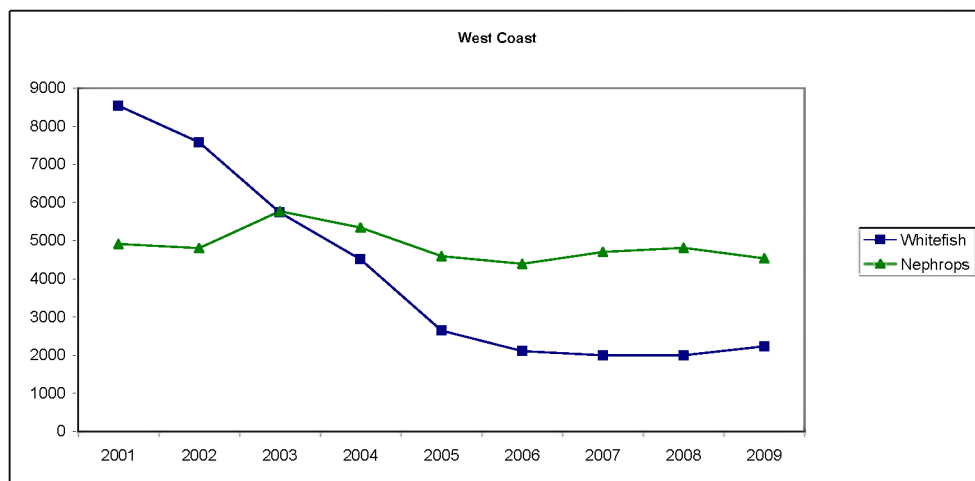
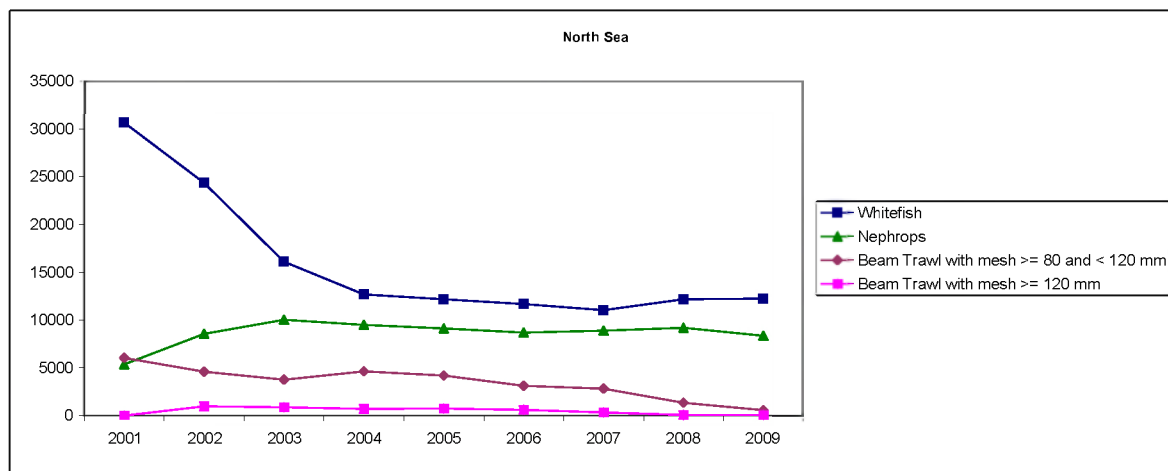


Table 11. Employment in sea fishing and Scottish labour force, 2002 to 2009

	2002	2003	2004	2005	2006	2007	2008	2009
Total employed in the catching sector	5,707	5,276	5,275	5,155	5,205	5,424	5,448	5,409
Total labour force ('000)	2,358	2,380	2,429	2,451	2,498	2,525	2,530	2,490
Employment in fishing as % of labour force	0.2	0.2	0.2	0.2	0.2	0.2	0.2	0.2

Source : Total Labour Force data - 2004-2007: Annual Population Survey (Jan-Dec); 2000-2003: Annual Labour Force Survey (Mar-Feb); Marine Scotland Compliance.

In 2005 Peterhead's employment figures were under-recorded. Their figures for 2005 have now been estimated as being the same as in 2006.

Table 12. Value of sea fish landings into Scotland by Scottish based vessels; fishermen employed, by selected region, 2009

Region	Landings (1) 2009	Labour force (2)	Fishermen employed	As % labour force
Eilean Siar, Orkney & Shetland	78.1	35	1,328	3.79
Aberdeenshire	145.0	130	1,335	1.03
Angus	1.2	52	58	0.11
Argyll & Bute	17.1	41	508	1.24
City of Aberdeen	3.7	117	46	0.04
City of Edinburgh	0.4	245	4	0.00
Dumfries and Galloway	4.6	70	194	0.28
East Lothian	2.3	47	68	0.14
Fife	4.5	172	174	0.10
Highland	71.1	117	949	0.81
Moray	3.5	44	273	0.62
North Ayrshire	0.8	57	19	0.03
Scottish Borders	3.4	54	79	0.15
South Ayrshire	3.8	50	374	0.75
Total	339	1,231	5,409	0.44

(1) £ million (2) thousands, Office for National Statistics

Table 13. Number of fishermen employed on Scottish based vessels, 2005 to 2009

	2005	2006	2007	2008	2009
Regularly employed	3,952	4,109	4,408	4,585	4,403
Irregularly employed	1,110	999	951	807	946
Crofters	93	97	65	56	60
Total	5,155	5,205	5,424	5,448	5,409

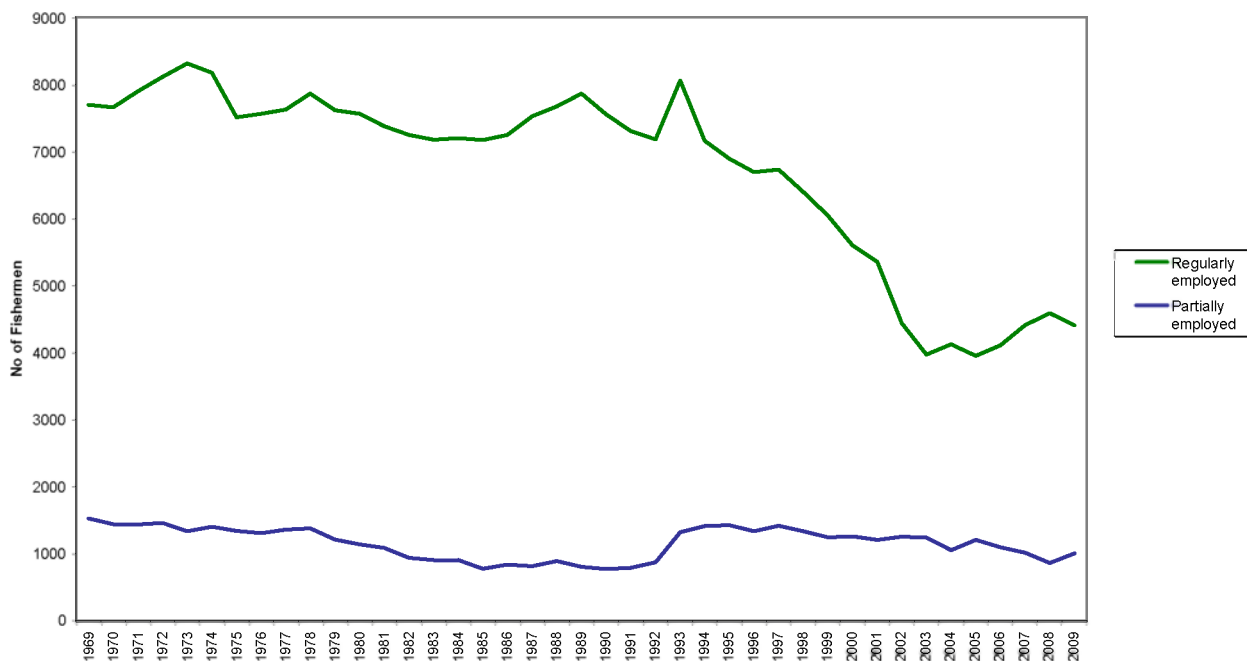
Figures are limited to those employed on vessels which submit landing declarations to Marine Scotland port offices. They exclude, for example, those employed in cockle picking.

Table 14. Number of fishermen employed by district and employment status, 2009

	Regularly employed	Irregularly employed	Crofters	Total
Eyemouth	140	11	-	151
Pittenweem	140	34	-	174
Aberdeen	94	58	-	152
Peterhead	408	53	-	461
Fraserburgh	712	114	-	826
Buckie	226	47	-	273
Scrabster	170	-	-	170
Orkney	275	146	-	421
Shetland	246	184	-	430
Stornoway	370	89	18	477
Lochinver	22	3	2	27
Kinlochbervie	43	-	1	44
Ullapool (1)	298	15	5	318
Mallaig	120	11	-	131
Oban	250	29	-	279
Campbeltown	226	28	-	254
Ayr	493	90	-	583
Portree	170	34	34	238
All districts	4,403	946	60	5,409

(1) Includes over 200 fishermen associated with a group of vessels which transferred to Ullapool from administration ports in England

Chart 5. Number of fishermen employed on Scottish based vessels, 1969 to 2009



## 2. Overview of Catches and Landings

This chapter brings together the information on the quantity, value, species and area of capture of landings. Statistics cover Scottish based vessels and UK vessels landing into the UK and abroad and foreign vessels landing into the UK.

### 2.1 Landings by Scottish Based Vessels

The value of landings by Scottish based vessels increased by 10 per cent in real terms to £443 million in 2009 (Table 18). This is the highest value for landings in real terms in the decade (Chart 2). The volume of landings increased by 2 per cent in 2009 to 378 thousand tonnes (Table 18).

*Table 18 : Value of landings by Scottish vessels at 2009 prices.*

Year	Demersal	Pelagic	Shellfish	Total £million
2000	218	85	110	413
2001	185	118	117	420
2002	163	116	112	391
2003	126	90	107	323
2004	125	96	117	338
2005	136	126	123	385
2006	146	98	151	396
2007	135	95	170	400
2008	141	103	157	401
2009	149	151	143	443

**Source:** underlying data for Charts 2 and 11.

The value of shellfish landings decreased by 9 per cent in real terms to £143 million in 2009, though the volume of landings increased by 7 per cent to 69 thousand tonnes (Table 27). This primarily reflects the drop in average price per tonne of *Nephrops* landings by Scottish vessels, falling by 16 per cent on the previous year at 2009 prices (calculated from Table 27). The average price per tonne of scallops, lobster and edible crabs also decreased by 13 per cent, 4 per cent and 4 per cent respectively, compared to 2008 (calculated from Table 27). In 2009 shellfish landings represented 18 per cent of the total by weight while they accounted for 32 per cent of total value (Chart 1 below).

Table III : Change in prices obtained by Scottish vessels for main species - at 2009 prices.

Species	2008 (at 2009 prices) (£ per tonne live weight)	2009 (£ per tonne live weight)	Change (%)
Cod	2,149	1,805	-16
Haddock	1,132	992	-12
Hake	1,722	1,972	14
Ling	1,237	1,202	-3
Megrim	2,682	2,611	-3
Monkfish	2,763	3,223	17
Plaice	1,326	1,165	-12
Whiting	1,022	996	-3
<b>All demersal species</b>	<b>1,417</b>	<b>1,438</b>	<b>1</b>
Mackerel	804	888	10
<b>All pelagic species</b>	<b>496</b>	<b>736</b>	<b>48</b>
Edible crabs	1,140	1,098	-4
Lobsters	10,797	10,323	-4
Nephrops	3,033	2,541	-16
Scallops	1,985	1,728	-13
<b>All shellfish</b>	<b>2,417</b>	<b>2,065</b>	<b>-15</b>

Source: Table 27.

Overall, demersal species made up 27 per cent of the total volume and 34 per cent of the total value of all landings by Scottish vessels (Chart I below). Demersal landings increased in value by 5 per cent in real terms to £149 million and the volume of landings increased by 4 per cent to 103 thousand tonnes (Table 27). The average price per tonne increased for saithe (up by 21 per cent in real terms compared to 2008), monkfish (up by 17 per cent) and hake (up by 14 per cent), whilst the average price per tonne dropped for the remaining main demersal species (calculated from Table 27). Cod prices were down by 16 per cent in real terms compared with 2008, haddock and plaice prices were down by 12 per cent, while ling, megrim and whiting prices decreased by 3 per cent (calculated from Table 27).

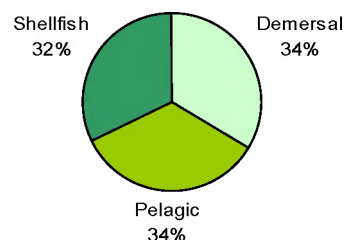
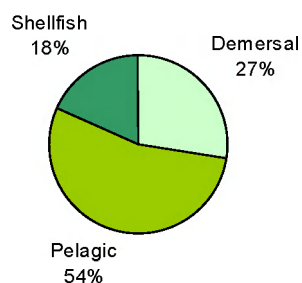
Pelagic landings made up 54 per cent of the total volume and 34 per cent of the total value (Chart I below). The volume of pelagic species landed decreased slightly (by 1 per cent) to 205 thousand tonnes, while the value of pelagic landings increased by 47 per cent in real terms to £151 million (Table 27). This increase in value was primarily due to the increased average price per tonne of mackerel (up by 10 per cent in real terms since 2008), combined with the increased volume of mackerel landed by Scottish based vessels, up by 39 per cent (calculated from Table 27). This increase in the value of mackerel landed resulted in mackerel replacing *Nephrops* as the most valuable species to the Scottish fleet in 2009.

The proportion of the value of the annual catch of the Scottish based fleet landed into Scotland decreased to 77 per cent in 2009 compared to 83 per cent in 2008.

*Chart 1: Total landings<sup>1</sup> by Scottish based vessels by species type, 2009*

Volume: 377,900 tonnes

Value: £443.0 million



Looking at the longer term trends, the value of demersal landings at £149 million in 2009 is 10 per cent higher in real terms compared with 2005 (calculated from Table 27). The value of pelagic landings (at 2009 prices) has increased by 19 per cent from £126 million in 2005 to £151 million in 2009 (calculated from Table 27). In spite of the decreases between 2008 and 2009, the value of shellfish landings has increased by 16 per cent in real terms since 2005 to reach £143 million (calculated from Table 27).

## 2.2 Total Landings into Scotland

The volume and value of all landings into each Scottish Fishery Office district are shown in Figures 1 and 2 respectively.

In 2009, the total value of fish landed into Scottish ports by vessels of all nationalities was £417 million, which represents no change in real terms compared to the value of landings in 2008. The total quantity landed into Scottish ports by vessels of all nationalities was 365 thousand tonnes in 2009, an 8 per cent drop compared to landings in 2008 (calculated from Table 17).

<sup>1</sup> When the Register of Buyers and Sellers (RBS) was introduced in September 2005, Sales Notes were not initially required for sales of Shellfish and information on the value of such landings is consequently missing. The value has therefore been estimated for a number of landings in 2005, mostly of shellfish, relating to voyages starting on or after 1st September 2005.

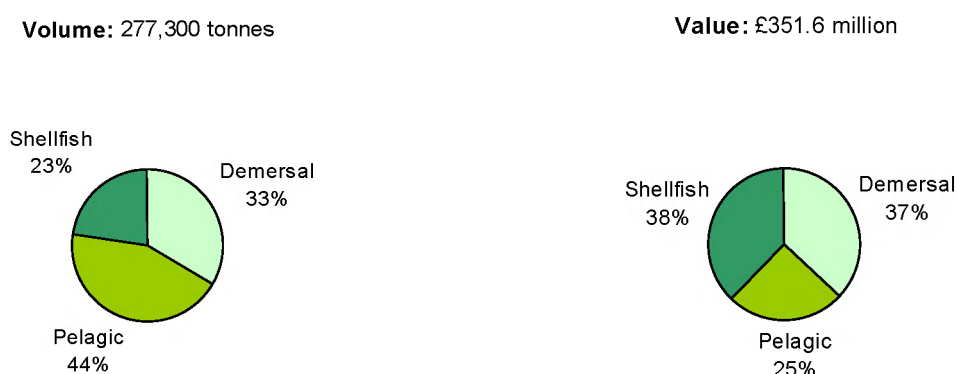


## 2.3 Landings by UK Vessels into Scotland

In 2009, UK vessels landed a total of 277 thousand tonnes at a value of £352 million into Scottish ports. These landings represent only a slight decrease in value (by 1 per cent) from 2008 in real terms, and a slight decrease of 2 per cent in volume (calculated from Table 17).

The species type composition of these landings was relatively similar to that of landings by Scottish based vessels (Chart I), although at 44 per cent pelagic vessels formed a smaller proportion of the UK landings into Scotland total (Chart II).

*Chart II: Landings<sup>2</sup> by UK vessels into Scotland, 2009*



## 2.4 Landings by Foreign Vessels into Scotland

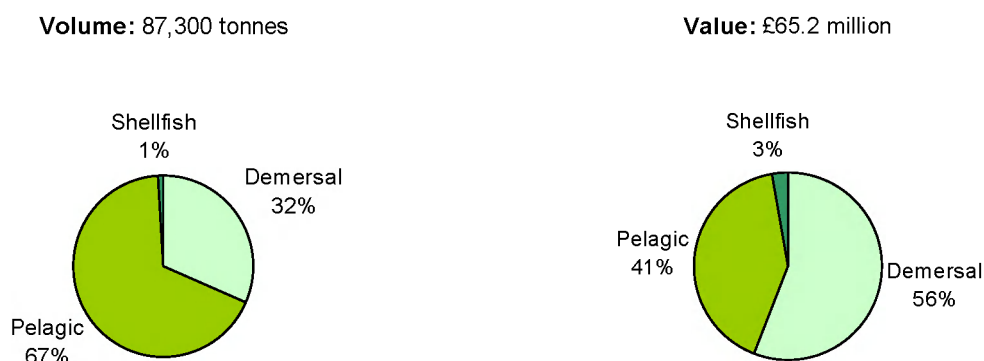
Foreign vessels landed 87 thousand tonnes of fish worth £65 million into Scottish ports in 2009, a decrease of 23 per cent in volume but an increase of 6 per cent in value in real terms since 2008 (calculated from Table 17). The difference is mostly due to decreased pelagic landings, down by 33 per cent and the increased value of demersal and shellfish landings, up by 24 per cent and 47 per cent respectively compared to 2008 (calculated from Table 17).

In 2009, the composition of species types landed into Scotland by foreign vessels reflected the decrease in landings of pelagic species, with the proportion of pelagic species decreasing from 77 per cent to 67 per cent. Demersal species made up 32 per cent of total landings in 2009, up from 22 per cent in 2008, while shellfish contributed 1 per cent of the total landings (Chart III).

---

<sup>2</sup> When the Register of Buyers and Sellers (RBS) was introduced in September 2005, Sales Notes were not initially required for sales of Shellfish and information on the value of such landings is consequently missing. The value has therefore been estimated for a number of landings in 2005, mostly of shellfish, relating to voyages starting on or after 1st September 2005.

Chart III: Foreign landings<sup>3</sup> into Scotland by species type, 2009



## 2.5 UK Quota

Since 2005, the UK quota for key demersal<sup>4</sup> stocks has only slightly increased (by 2 per cent) while the quota for key pelagic<sup>5</sup> stocks has decreased by 11 per cent (Table III, below).

Table IV: Combined UK quota ('000 tonnes) for key demersal and pelagic stocks 2005-2009

Quota ('000 tonnes)	2005	2006	2007	2008	2009	Change 2005 - 2009
Combined key demersal stocks	145	152	153	149	145	+0.1 (+0.1%)
Combined key pelagic stocks	258	212	221	195	230	-28 (-11%)

Source: Table 15.

<sup>3</sup> When the Register of Buyers and Sellers (RBS) was introduced in September 2005, Sales Notes were not initially required for sales of Shellfish and information on the value of such landings is consequently missing. The value has therefore been estimated for a number of landings in 2005, mostly of shellfish, relating to voyages starting on or after 1st September 2005.

<sup>4</sup> Key demersal stocks are considered to be North Sea & West of Scotland stocks of Cod, Haddock, Monkfish, Whiting, Saithe, Plaice and *Nephrops*.

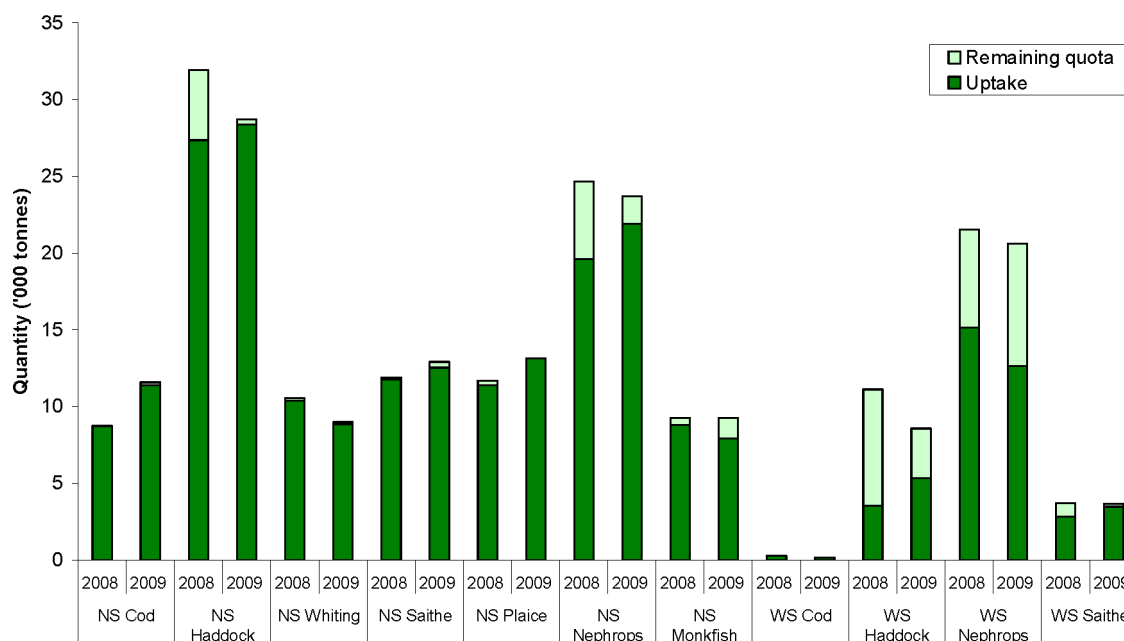
<sup>5</sup> Key pelagic stocks are considered to be North Sea & West of Scotland stocks of Mackerel, Herring and Horse Mackerel.

## 2.5.1 Demersal Stocks

Quota uptake reached 100 per cent for North Sea Plaice and was around 95 per cent or over for eight of the other key demersal stocks (NS Cod, NS Haddock, NS Whiting, NS Saithe, WS Cod, WS Whiting, WS Monkfish and WS Saithe; Chart IV, Table 15). Uptake of the key demersal stocks in 2009 was similar to that in 2008 except in the following cases where differences were evident:

- Uptake of NS Haddock increased from 86 to 99 per cent, as quota decreased by 10 per cent while landings increased by 4 per cent.
- Uptake of NS *Nephrops* increased from 80 to 93 per cent, as quota decreased by 4 per cent and landings increased by 12 per cent.
- Uptake of NS Monkfish decreased from 95 to 86 per cent, as quota remained unchanged while landings decreased by 10 per cent.
- Uptake of WS Haddock increased from 32 to 62 per cent, as quota decreased by 23 per cent and landings increased by 50 per cent.
- Uptake of WS Saithe increased from 77 to 95 per cent, as quota remained unchanged and landings increased by 22 per cent.
- Uptake of WS *Nephrops* decreased from 70 to 61 per cent, as quota decreased by 4 per cent while landings decreased by 17 per cent.

*Chart IV: Quota uptake of main North Sea (NS) and West of Scotland (WS) demersal stocks by UK vessels in 2008 and 2009*

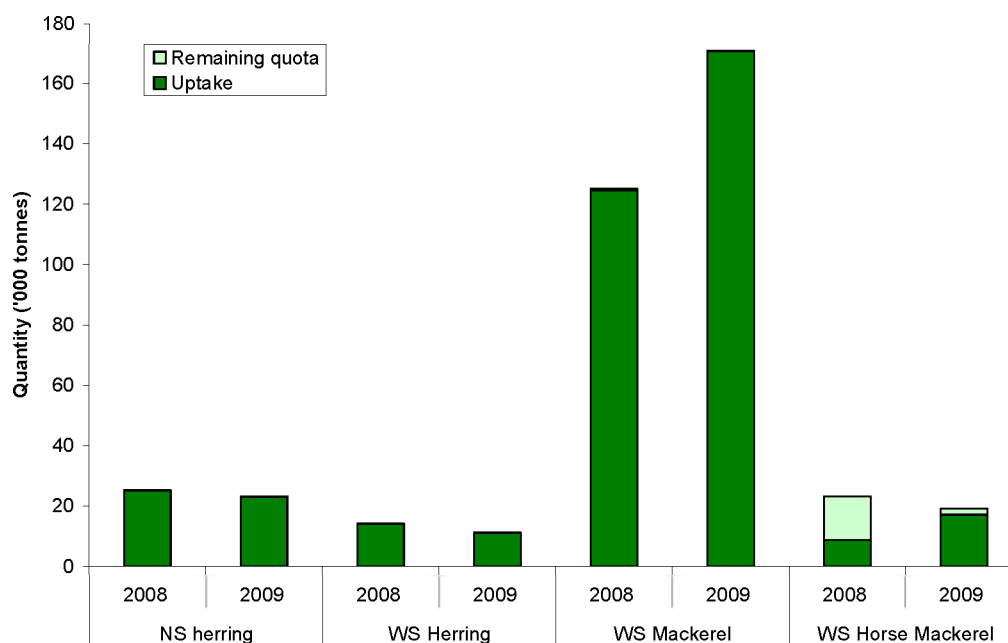


## 2.5.2 Pelagic Stocks

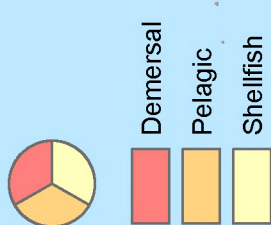
Quota uptake for the four most important pelagic stocks continued to be high in 2009. Quota uptake approached 100 per cent for NS Mackerel, NS Herring, WS Mackerel and WS Herring. Some notable changes in quota occurred over the last year for the following stocks:

- NS mackerel quota increased by 175 per cent from a very low base and landings correspondingly increased by 202 per cent, while quota uptake increased from 89 to 97 per cent.
- NS Horse Mackerel quota uptake decreased from 52 to 24 per cent, as quota and landings decreased by 41 per cent and 73 per cent, respectively.
- WS Mackerel quota increased by 37 per cent while quota uptake remained at just under 100 per cent.
- WS Horse Mackerel quota decreased by 17 per cent, as landings increased by 95 per cent, leading to increased quota uptake from 38 to 90 per cent.

*Chart V: Quota uptake of main North Sea (NS) and West of Scotland (WS) pelagic stocks by UK vessels in 2008 and 2009.*



District value



## District weight

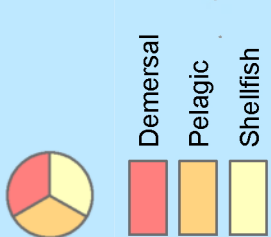


Table 15. Total Allowable Catches, UK quotas, and liveweight landed by UK vessels, 2005 to 2009

Area	Species	Sea area	Year	EU total allowable catch	UK quota		UK uptake	
					After exchanges	% of TAC	Tonnes	% of quota
North sea	Cod	IIa (EU),IV	2005	22,659	8,674	38.3	7,953	91.7
			2006	19,260	8,357	43.4	8,342	99.8
			2007	16,564	8,035	48.5	8,099	100.8
			2008	18,386	8,748	47.6	8,734	99.8
			2009	23,902	11,584	48.5	11,394	98.4
	Haddock	IIa (EU),IV	2005	51,321	44,123	86.0	42,422	96.1
			2006	44,546	39,053	87.7	32,378	82.9
			2007	46,983	36,841	78.4	26,725	72.5
			2008	37,626	31,914	84.8	27,352	85.7
			2009	32,679	28,704	87.8	28,388	98.9
	Whiting	IIa (EU),IV	2005	19,800	10,544	53.3	8,110	76.9
			2006	17,370	11,733	67.5	11,482	97.9
			2007	21,420	13,915	65.0	12,112	87.0
			2008	15,012	10,556	70.3	10,389	98.4
			2009	12,593	8,994	71.4	8,852	98.4
	Saithe	IIa,III(EU),IV	2005	69,600	10,239	14.7	8,766	85.6
			2006	59,160	9,379	15.9	9,229	98.4
			2007	59,160	10,069	17.0	9,443	93.8
			2008	65,232	11,901	18.2	11,777	99.0
			2009	60,448	12,918	21.4	12,530	97.0
	Plaice	IIa (EU),IV	2005	57,370	13,932	24.3	12,707	91.2
			2006	55,820	12,651	22.7	12,429	98.2
			2007	49,143	11,403	23.2	11,558	101.4
			2008	47,875	11,690	24.4	11,411	97.6
			2009	52,615	13,111	24.9	13,143	100.2
	Sole	II,IV	2005	18,320	1,127	6.2	945	83.9
			2006	17,470	1,256	7.2	910	72.5
			2007	14,920	1,406	9.4	1,207	85.8
			2008	12,710	930	7.3	852	91.6
			2009	13,910	974	7.0	942	96.7
	Hake	IIa(EU),IV(EU)	2005	1,496	262	17.5	251	95.8
			2006	1,541	326	21.2	320	98.2
			2007	1,850	397	21.5	360	90.7
			2008	1,896	2,198	115.9	1,936	88.1
			2009	1,808	3,147	174.1	3,152	100.2
	Nephrops	IIa(EU),IV(EU)	2005	21,350	18,101	84.8	18,079	99.9
			2006	24,380	24,432	100.2	21,003	86.0
			2007	26,144	24,837	95.0	21,207	85.4
			2008	26,144	24,660	94.3	19,618	79.6
			2009	24,837	23,699	95.4	21,929	92.5
	Nephrops	IV(Norway)	2005	7,000	2,488	35.5	1,006	40.4
			2006	7,000	2,581	36.9	1,234	47.8
			2007	1,300	61	4.7	-	-
			2008	1,250	60	4.8	4	6.7
			2009	1,210	53	4.4	13	23.5
	Anglers	IIa(EU),IV(EU)	2005	10,314	8,950	86.8	8,059	90.0
			2006	10,314	9,509	92.2	7,845	82.5
			2007	11,345	9,313	82.1	8,739	93.8
			2008	11,345	9,258	81.6	8,816	95.2
			2009	11,345	9,272	81.7	7,932	85.5
Anglers	IV(Norway)	2005	1,800	318	17.7	235	73.9	
		2006	1,750	278	15.9	265	95.3	
		2007	1,650	282	17.1	273	96.8	
		2008	1,610	258	16.0	231	89.5	
		2009	1,550	246	15.9	233	94.6	
Megrim	IIa(EU),IV(EU)	2005	1,740	1,677	96.4	1,197	71.4	
		2006	1,740	1,655	95.1	1,326	80.1	
		2007	1,479	1,424	96.3	1,428	100.3	
		2008	1,597	1,528	95.7	1,490	97.5	
		2009	1,597	1,529	95.7	1,451	94.9	
Lemon sole & witches	IIa(EU),IV(EU)	2005	6,500	3,825	58.8	1,885	49.3	
		2006	6,175	3,431	55.6	1,794	52.3	
		2007	6,175	3,498	56.6	2,098	60.0	
		2008	6,793	4,001	58.9	1,882	47.0	
		2009	6,793	4,141	61.0	1,377	33.3	
Skate & rays	IIa(EU),IV(EU)	2005	3,220	2,080	64.6	825	39.7	
		2006	2,737	1,695	61.9	726	42.8	
		2007	2,190	1,020	46.6	706	69.2	
		2008	1,643	766	46.6	763	99.6	
		2009	1,643	757	46.1	662	87.5	
Dabs & flounder	IIa(EU),IV(EU)	2005	18,000	1,830	10.2	1,606	87.8	
		2006	17,100	2,218	13.0	1,629	73.4	
		2007	17,100	1,767	10.3	1,329	75.2	
		2008	18,810	1,921	10.2	904	47.1	
		2009	18,810	1,317	7.0	705	53.6	
Turbot & brill	IIa(EU),IV(EU)	2005	4,550	672	14.8	579	86.2	
		2006	4,323	551	12.7	523	94.9	
		2007	4,323	736	17.0	630	85.6	
		2008	5,263	763	14.5	452	59.2	
		2009	5,263	764	14.5	508	66.5	
Spurdog	IIa(EU),IV(EU)	2005	1,136	925	81.4	489	52.9	
		2006	691	778	112.6	207	26.6	
		2007	791	640	80.9	128	20.0	
		2008	581	470	80.9	94	20.0	
		2009	266	311	116.7	154	49.6	
Herring	IVa,b	2005	305,557	94,941	31.1	94,648	99.7	
		2006	272,851	69,011	25.3	68,915	99.9	
		2007	204,638	48,541	23.7	48,163	99.2	
		2008	116,210	25,299	21.8	25,208	99.6	
		2009	97,843	23,205	23.7	23,132	99.7	

Area	Species	Sea area	Year	EU total	UK quota		UK uptake		
				allowable catch	After exchanges	% of TAC	Tonnes	% of quota	
North sea	Herring	IVc,VIIId	2005	74,293	6,082	8.2	5,861	96.4	
			2006	50,023	5,246	10.5	5,221	99.5	
			2007	37,517	3,874	10.3	3,564	92.0	
			2008	26,661	2,602	9.8	2,525	97.0	
	Mackerel	IIa (EU),III(EU), IV	2009	23,567	1,982	8.4	1,905	96.1	
			2005	17,067	609	3.6	612	100.5	
			2006	17,621	414	2.3	502	121.3	
			2007	19,677	1,127	5.7	1,027	91.1	
	Horse mackerel	IIa(EU),IV(EU)	2008	18,149	492	2.7	436	88.6	
			2009	23,450	1,354	5.8	1,318	97.3	
			2005	40,616	2,366	5.8	1,800	76.1	
			2006	40,957	3,917	9.6	2,168	55.3	
	Blue whiting	I-VIII, XII, XIV	2007	40,983	3,629	8.9	3,625	99.9	
			2008	37,230	2,923	7.9	1,528	52.3	
			2009	34,770	1,716	4.9	420	24.5	
			2005	-	-	-	-	-	
	Sandeel	IIa(EU),IV(EU)	2006	344,063	80,179	23.3	79,577	99.2	
			2007	279,058	55,565	19.9	53,653	96.6	
			2008	175,466	35,172	20.0	35,105	99.8	
			2009	74,058	6,358	8.6	6,332	99.6	
	Sprat	IIa(EU),IV(EU)	2005	655,960	13,525	2.1	-	-	
			2006	-	-	-	-	-	
			2007	152,717	3,774	2.5	1,657	43.9	
			2008	355,228	7,010	2.0	6,259	89.3	
	West of Scotland	Cod	Vb(EU),VI XII(int'l), XIVb(int'l)	2009	177,500	4,104	2.3	3,616	88.1
				2005	250,000	9,493	3.8	1,605	16.9
				2006	263,540	4,944	1.9	543	11.0
				2007	147,028	5,162	3.5	323	6.3
Haddock		Vb(EU),VI XII(int'l), XIVb(int'l)	2008	175,777	5,659	3.2	232	4.1	
			2009	150,777	4,791	3.2	2,600	54.3	
			2005	721	485	67.3	401	82.7	
			2006	613	456	74.4	361	79.2	
Whiting		Vb(EU),VI XII(int'l), XIVb(int'l)	2007	490	364	74.3	307	84.3	
			2008	402	281	69.9	281	100.0	
			2009	302	170	56.3	166	97.4	
			2005	8,302	7,081	85.3	3,240	45.8	
Saithe	Vb(EU),VI XII(int'l), XIVb(int'l)	2006	7,810	7,432	95.2	5,381	72.4		
		2007	11,815	9,746	82.5	4,422	45.4		
		2008	13,036	11,121	85.3	3,548	31.9		
		2009	9,395	8,582	91.3	5,330	62.1		
Plaice	Vb(EU),VI XII(int'l), XIVb(int'l)	2005	1,600	917	57.3	164	17.9		
		2006	1,360	872	64.1	181	20.8		
		2007	1,020	672	65.9	426	63.4		
		2008	765	503	65.8	377	75.0		
Sole	Vb(EU),VI XII(int'l), XIVb(int'l)	2009	574	379	66.1	367	96.6		
		2005	15,044	3,792	25.2	2,009	53.0		
		2006	12,787	4,002	31.3	2,748	68.7		
		2007	12,787	3,953	30.9	1,424	36.0		
Anglers	Vb(EU),VI XII(int'l), XIVb(int'l)	2008	14,100	3,708	26.3	2,847	76.8		
		2009	13,066	3,668	28.1	3,475	94.7		
		2005	982	597	60.8	59	9.9		
		2006	786	477	60.7	45	9.4		
Nephrops	Vb(EU),VI XII(int'l), XIVb(int'l)	2007	786	477	60.7	47	9.9		
		2008	786	786	100.0	32	4.1		
		2009	786	477	60.7	34	7.1		
		2005	68	14	20.6	2	13.6		
Megrim	Vb(EU),VI XII(int'l), XIVb(int'l)	2006	68	14	20.6	2	11.4		
		2007	68	14	20.6	3	21.4		
		2008	68	14	20.6	3	18.6		
		2009	68	14	20.6	2	12.1		
Pollack	Vb(EU),VI XII(int'l), XIVb(int'l)	2005	4,686	1,865	39.8	1,650	88.5		
		2006	4,686	1,819	38.8	1,509	83.0		
		2007	5,155	2,029	39.4	1,734	85.5		
		2008	5,155	1,762	34.2	1,728	98.1		
Spurdog	I, V, VI, VII, VIII XII, XIV	2009	5,567	2,147	38.6	2,064	96.1		
		2005	12,700	12,399	97.6	10,273	82.9		
		2006	17,675	18,505	104.7	13,658	73.8		
		2007	19,885	21,213	106.7	16,175	76.3		
Haddock	Vb(EU),VI XII(int'l), XIVb(int'l)	2008	19,885	21,533	108.3	15,158	70.4		
		2009	18,891	20,598	109.0	12,643	61.4		
		2005	2,880	903	31.4	643	71.2		
		2006	2,880	903	31.4	535	59.2		
Whiting	Vb(EU),VI XII(int'l), XIVb(int'l)	2007	2,880	936	32.5	854	91.2		
		2008	2,592	1,203	46.4	1,011	84.0		
		2009	2,799	1,240	44.3	1,118	90.1		
		2005	563	232	41.2	19	8.0		
Saithe	Vb(EU),VI XII(int'l), XIVb(int'l)	2006	450	165	36.7	5	3.3		
		2007	450	165	36.7	21	12.7		
		2008	450	165	36.7	23	13.9		
		2009	450	165	36.7	25	15.0		

Table 15. continued

Area	Species	Sea area	Year	EU total allowable catch	UK quota After exchanges	% of TAC	UK uptake Tonnes	% of quota
West of Scotland	Herring	Vb(EU), VIa(N), Vlb	2005	29,440	17,788	60.4	17,439	98.0
			2006	33,340	18,809	56.4	18,326	97.4
			2007	33,340	17,758	53.3	17,640	99.3
			2008	26,540	14,277	53.8	14,086	98.7
			2009	21,100	11,233	53.2	11,076	98.6
	Mackerel	II(excl EU, Ice) Vb(EU), VI, VII, VIII(excl c), XII(intl), XIVb(intl)	2005	217,477	128,690	59.2	127,929	99.4
			2006	225,837	103,168	45.7	102,537	99.4
			2007	256,363	132,856	51.8	132,674	99.9
			2008	234,082	125,078	53.4	124,492	99.5
			2009	311,531	170,929	54.9	170,664	99.8
	Herring	VIa(Clyde)	2005	1,000	996	99.6	333	33.4
			2006	800	800	100.0	470	58.8
			2007	800	800	100.0	598	74.8
			2008	800	800	100.0	549	68.6
			2009	800	800	100.0	755	94.4
	Horse mackerel	Vb(EU), VI, VII, VIII(excl c), XII(intl), XIVb(intl)	2005	133,223	6,598	5.0	6,178	93.6
			2006	135,257	11,101	8.2	10,507	94.6
			2007	135,518	11,918	8.8	10,213	85.7
			2008	167,920	23,218	13.8	8,809	37.9
			2009	165,939	19,168	11.6	17,212	89.8
	Hake	Vb(EU), VI, VII, XII(intl), XIVb(intl)	2005	23,888	3,896	16.3	3,046	78.2
			2006	24,617	3,850	15.6	3,086	80.2
			2007	29,541	5,775	19.5	3,546	61.4
			2008	30,281	4,080	13.5	3,261	79.9
			2009	28,879	3,709	12.8	3,735	100.7
Area VII	Cod	VIIa	2005	2,150	819	38.1	599	73.1
			2006	1,828	1,028	56.2	592	57.6
			2007	1,462	724	49.5	432	59.7
			2008	1,199	617	51.5	539	87.4
			2009	899	456	50.7	399	87.6
	Cod	VII(excl a), VIII IX, X	2005	6,200	532	8.6	491	92.3
			2006	5,580	689	12.3	646	93.8
			2007	4,743	595	12.5	598	100.5
			2008	4,316	448	10.4	450	100.5
			2009	4,023	305	7.6	281	92.1
	Haddock	VII, VIII, IX, X	2005	11,520	1,189	10.3	642	54.0
			2006	11,520	1,154	10.0	696	60.3
			2007	11,520	1,216	10.6	941	77.4
			2008	11,579	1,327	11.5	1,103	83.1
			2009	11,579	1,578	13.6	1,196	75.8
	Whiting	VIIa	2005	514	199	38.7	47	23.6
			2006	437	189	43.2	23	11.9
			2007	371	163	43.9	5	3.2
			2008	278	107	38.5	11	10.4
			2009	209	92	43.9	21	22.6
	Whiting	VII(excl a)	2005	21,600	2,485	11.5	566	22.8
			2006	19,940	2,289	11.5	484	21.2
			2007	19,940	2,269	11.4	636	28.0
			2008	19,940	2,085	10.5	702	33.7
			2009	16,949	1,578	9.3	968	61.4
	Saithe	VII, VIII, IX, X	2005	5,574	855	15.3	210	24.6
			2006	4,738	726	15.3	120	16.5
			2007	3,790	581	15.3	90	15.5
			2008	3,790	582	15.4	76	13.1
			2009	3,790	481	12.7	113	23.4
	Plaice	VIIa	2005	1,608	590	36.7	422	71.5
			2006	1,608	707	44.0	412	58.2
			2007	1,849	708	38.3	412	58.2
			2008	1,849	735	39.8	300	40.7
			2009	1,430	566	39.5	212	37.5
	Plaice	VIIde	2005	5,151	1,477	28.7	1,290	87.3
			2006	5,151	1,644	31.9	1,503	91.4
			2007	5,050	1,615	32.0	1,135	70.3
			2008	5,050	1,369	27.1	1,134	82.8
			2009	4,646	1,387	29.9	1,324	95.5
	Plaice	VIIfg	2005	476	69	14.5	55	79.7
			2006	476	119	25.0	87	73.0
			2007	417	72	17.3	61	85.3
			2008	491	94	19.1	62	66.4
			2009	422	58	13.7	56	96.2
	Plaice	VIIhjk	2005	466	58	12.4	28	48.3
			2006	396	50	12.6	19	37.0
			2007	337	42	12.5	20	47.6
			2008	303	32	10.6	12	37.8
			2009	256	39	15.3	32	81.1
	Sole	VIIa	2005	960	146	15.2	103	70.5
			2006	960	226	23.5	70	31.2
			2007	816	204	25.0	70	34.2
			2008	669	162	24.2	38	23.3
			2009	502	123	24.5	20	16.2
	Sole	VIIId	2005	5,700	1,170	20.5	558	47.7
			2006	5,720	1,215	21.2	669	55.1
			2007	6,220	1,315	21.1	799	60.7
			2008	6,593	1,395	21.2	718	51.5
			2009	5,274	1,112	21.1	759	68.2
	Sole	VIIe	2005	865	511	59.1	506	99.0
			2006	940	566	60.2	565	99.8
			2007	900	531	59.0	529	99.6
			2008	765	465	60.8	464	99.7
			2009	650	371	57.1	377	101.5

Area	Species	Sea area	Year	EU total allowable catch	UK quota After exchanges	% of TAC	UK uptake Tonnes	% of quota
Area VII	Sole	VIIfg	2005	1,000	251	25.1	217	86.5
			2006	950	274	28.8	232	84.6
			2007	893	272	30.5	245	89.9
			2008	964	298	30.9	218	73.2
			2009	993	306	30.8	195	63.6
	Sole	VIIhjk	2005	650	141	21.7	112	79.4
			2006	650	168	25.8	86	51.4
			2007	650	138	21.2	91	65.9
			2008	650	108	16.6	80	73.9
			2009	553	103	18.6	58	56.0
	Nephrops	VII	2005	19,544	6,507	33.3	5,546	85.2
			2006	21,498	7,925	36.9	6,609	83.4
			2007	25,153	9,119	36.3	7,096	77.8
			2008	25,153	9,073	36.1	8,721	96.1
			2009	24,650	8,861	35.9	8,303	93.7
	Anglers	VII	2005	25,082	5,047	20.1	4,074	80.7
			2006	26,456	4,907	18.5	4,021	81.9
			2007	28,080	5,468	19.5	4,993	91.3
			2008	28,080	5,425	19.3	4,572	84.3
			2009	28,080	5,465	19.5	4,614	84.4
	Megrim	VII	2005	19,263	3,039	15.8	1,868	61.5
			2006	18,300	2,918	15.9	1,636	56.1
			2007	18,300	2,916	15.9	1,651	56.6
			2008	18,300	2,624	14.3	1,798	68.5
			2009	18,300	2,873	15.7	2,368	82.4
	Pollack (Lythe)	VII	2005	17,000	2,964	17.4	1,622	54.7
			2006	15,300	2,658	17.4	1,488	56.0
			2007	15,300	2,665	17.4	1,727	64.8
			2008	15,300	2,666	17.4	1,382	51.8
			2009	15,300	2,664	17.4	1,461	54.8
	Herring	VIIa	2005	4,800	3,640	75.8	3,522	96.8
			2006	4,800	4,238	88.3	3,822	90.2
			2007	4,800	4,699	97.9	4,630	98.5
			2008	4,800	4,948	103.1	4,897	99.0
			2009	4,800	4,824	100.5	4,594	95.2
	Herring	VIIe,f	2005	1,000	467	46.7	264	56.5
			2006	1,000	488	48.8	265	54.3
			2007	1,000	500	50.0	222	44.3
			2008	1,000	500	50.0	106	21.3
			2009	1,000	500	50.0	136	27.2
	Sprat	VIIde	2005	7,680	4,032	52.5	1,635	40.6
			2006	6,144	3,226	52.5	1,974	61.2
			2007	6,144	3,226	52.5	2,706	83.9
			2008	6,144	4,626	75.3	3,366	72.8
			2009	6,144	4,581	74.6	2,763	60.3

Table 15. continued

Area	Species	Sea area	Year	EU total allowable catch	UK quota		UK uptake	
					After exchanges	% of TAC	Tonnes	% of quota
Faroes	Cod/haddock	Vb (Faroes)	2005	500	480	96.0	447	93.1
			2006	500	480	96.0	385	80.2
			2007	500	480	96.0	460	95.8
			2008	500	480	96.0	469	97.6
			2009	500	440	88.0	427	97.0
	Saithe	Vb (Faroes)	2005	2,500	1,069	42.8	1,010	94.5
			2006	2,800	1,216	43.4	1,099	90.4
			2007	2,700	1,016	37.6	408	40.2
			2008	2,425	807	33.3	358	44.3
			2009	2,425	816	33.6	666	81.6
	Redfish	Vb (Faroes)	2005	4,000	854	21.4	106	12.4
			2006	3,000	232	7.7	66	28.4
			2007	2,265	44	1.9	9	20.5
			2008	1,600	67	4.2	6	9.0
			2009	1,600	17	1.1	14	81.8
	Ling/blue ling	Vb (Faroes)	2005	3,240	334	10.3	302	90.4
			2006	3,065	245	8.0	151	61.6
			2007	3,065	224	7.3	165	73.7
			2008	3,065	275	9.0	121	44.1
			2009	3,065	378	12.3	270	71.5
	Flatfish	Vb (Faroes)	2005	600	408	68.0	93	22.8
			2006	450	294	65.3	66	22.4
			2007	300	201	67.0	21	10.4
			2008	300	204	68.0	21	10.4
			2009	300	204	68.0	63	30.8
	Other species	Vb (Faroes)	2005	760	319	42.0	301	94.4
			2006	760	345	45.4	315	91.3
			2007	760	200	26.3	159	79.5
			2008	760	180	23.7	98	54.4
			2009	760	320	42.1	246	76.8
	Blue whiting	Vb (Faroes)	2005	16,000	2,806	17.5	2,805	100.0
			2006	16,000	2,564	16.0	2,564	100.0
			2007	18,000	4,396	24.4	2,813	64.0
			2008	12,240	4,385	35.8	3,042	69.4
			2009	3,000	1,320	44.0	0	0.0

Source : EU Commission

UK figures are as reported to the EC Commission in 2006. This data, however, is still provisional and does not take into account flexibility arrangements, or small adjustments required to UK landings abroad by other member states.

Chart 6. UK percentage uptake of main quota stocks, 2009

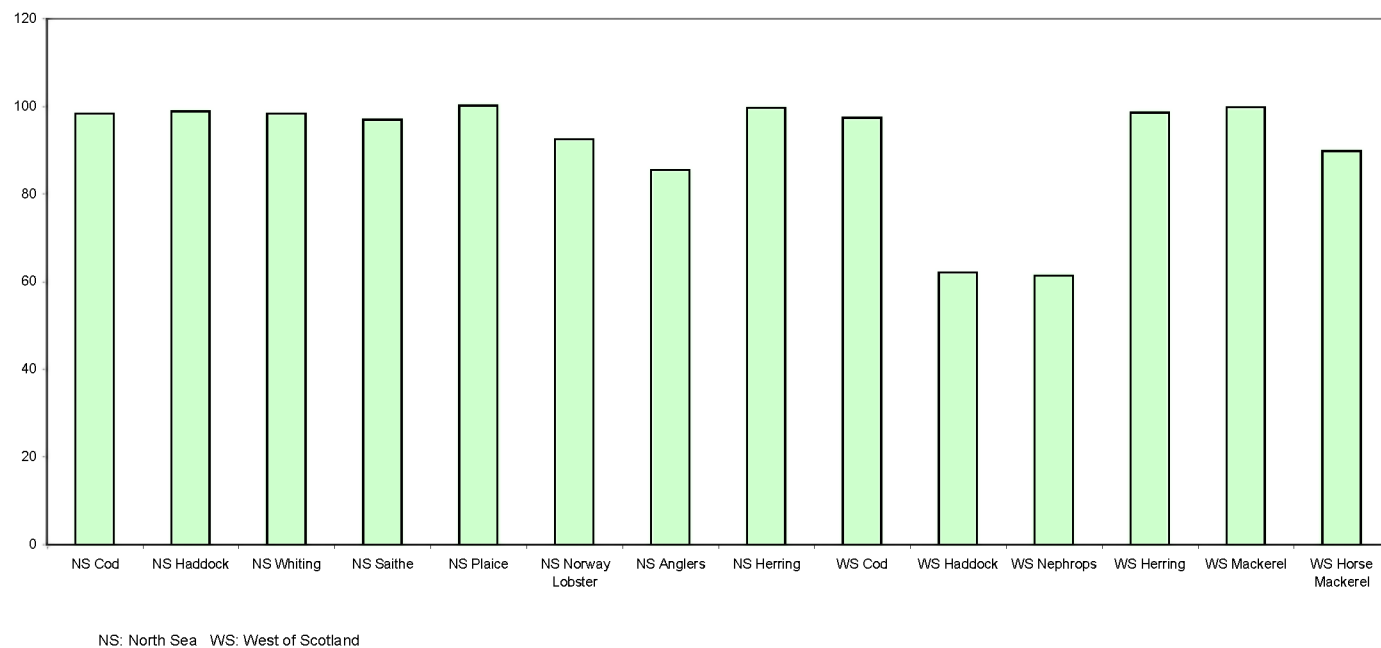


Table 16. Fixed quota units (thousands), by sea area and country, 1st January 2010

North Sea (1)				West of Scotland (2)				Area VII			
	Scottish vessels	Other UK vessels	Held in PO (3) pools		Scottish vessels	Other UK vessels	Held in PO (3) pools		Scottish vessels	Other UK vessels	Held in PO (3) pools
Demersal	961	386	1,061		715	106	269		22	149	93
Pelagic	579	191	29		2,209	864	44		0	26	1
Shellfish	53	14	63		37	12	64		3	31	25
Total	1,593	591	1,153		2,961	982	378		25	206	119

(1) includes southern North Sea herring (2) includes western hake (3) Producer Organisations



Table 17. Live weight and value of landings by species type, 2005 to 2009

		Tonnes (thousand)					Value (£ million) (1)					Value (£ million) (2009 prices)				
		2005	2006	2007	2008	2009	2005	2006	2007	2008	2009	2005	2006	2007	2008	2009
Landings by UK vessels into:																
Scotland	Demersal	94.6	88.0	79.9	84.1	92.6	108.3	120.5	113.8	120.0	129.6	119.5	129.4	118.8	121.6	129.6
	Pelagic	217.2	144.0	165.3	135.4	121.6	91.9	65.5	75.3	74.6	87.8	101.4	70.3	78.6	75.6	87.8
	Shellfish	54.5	57.3	65.9	63.6	63.1	108.5	137.7	159.2	156.1	134.1	119.8	147.8	166.2	158.3	134.1
	Total	366.3	289.2	311.1	283.1	277.3	308.7	323.7	348.3	350.7	351.6	340.8	347.6	363.5	355.5	351.6
	Rest of UK	Demersal	34.4	31.3	33.1	25.6	64.3	62.4	66.7	59.8	60.5	71.0	67.0	69.6	60.6	60.5
Rest of UK	Pelagic	21.0	19.9	21.2	20.7	23.4	7.8	8.3	8.8	8.0	10.3	8.6	8.9	9.2	8.1	10.3
	Shellfish	70.0	76.1	74.4	78.7	67.2	75.2	99.4	112.0	107.5	97.2	83.1	106.8	116.9	108.9	97.2
	Total	125.4	127.3	128.7	125.1	116.8	147.3	170.1	187.5	175.2	168.0	162.6	182.7	195.7	177.6	168.0
Landings by foreign vessels into:																
Scotland	Demersal	30.0	25.9	26.6	25.2	27.6	42.3	36.9	29.2	28.8	36.3	46.7	39.6	30.5	29.2	36.3
	Pelagic	44.2	69.1	63.4	87.1	58.6	18.6	28.1	23.2	30.8	27.0	20.5	30.2	24.2	31.2	27.0
	Shellfish	0.5	0.7	0.8	0.9	1.1	0.6	1.9	2.4	1.2	1.8	0.7	2.1	2.5	1.2	1.8
	Total	74.7	95.7	90.7	113.2	87.3	61.6	66.9	54.7	60.9	65.2	68.0	71.9	57.1	61.7	65.2
	Rest of UK	Demersal	70.7	30.3	16.4	12.7	100.8	39.3	28.3	18.9	23.6	111.3	42.2	29.5	19.2	23.6
Rest of UK	Pelagic	0.4	0.6	1.5	0.6	2.0	0.3	0.1	1.1	0.3	0.6	0.3	0.1	1.1	0.3	0.6
	Shellfish	1.3	1.2	1.2	1.2	1.4	1.7	1.7	1.7	1.7	2.0	1.9	1.9	1.8	1.7	2.0
	Total	72.4	32.2	19.1	14.5	14.3	102.7	41.2	31.1	20.9	26.2	113.4	44.2	32.5	21.2	26.2
Landings by UK vessels into UK		Demersal	129.0	119.3	113.1	109.8	172.6	182.9	180.5	179.8	190.1	190.5	196.4	188.4	182.2	190.1
All landings into UK	Pelagic	238.2	163.9	186.5	156.1	145.0	99.7	73.8	84.1	82.6	98.1	110.0	79.3	87.8	83.7	98.1
	Shellfish	124.5	133.4	140.3	142.3	130.3	183.8	237.1	271.2	263.6	231.4	202.9	254.6	283.0	267.2	231.4
	Total	491.7	416.5	439.8	408.2	394.2	456.0	493.8	535.7	526.0	519.6	503.4	530.3	559.2	533.1	519.6
	Demersal	229.7	175.6	156.0	147.7	157.3	315.7	259.1	238.0	227.5	250.0	348.5	278.2	248.4	230.6	250.0
	Pelagic	282.8	233.6	251.3	243.8	205.6	118.6	102.1	108.3	113.6	125.7	130.9	109.6	113.1	115.2	125.7
Landings into Scotland as per cent of landings into UK	Shellfish	126.3	135.3	142.2	144.5	132.9	186.1	240.8	275.3	266.6	235.2	205.4	258.6	287.3	270.2	235.2
	Total	638.8	544.4	549.6	535.9	495.7	620.3	601.9	621.6	607.7	610.9	684.7	646.4	648.8	616.0	610.9
	Demersal	73.3	73.7	70.7	76.6	77.9	62.7	65.9	63.1	66.7	68.2					
	Pelagic	91.2	87.9	88.6	86.7	83.9	92.2	88.7	89.5	90.3	89.5					
	Shellfish	43.8	42.9	47.0	44.7	48.4	59.1	58.1	58.7	59.2	58.0					
Landings into Scotland as per cent of landings into UK	Total	74.5	69.4	70.7	69.4	70.4	67.7	65.5	65.0	66.7	67.7					
	Demersal	54.2	64.9	68.3	74.0	76.4	47.7	60.8	60.1	65.4	66.4					
	Pelagic	92.4	91.2	91.0	91.3	87.7	93.2	91.7	90.9	92.7	91.3					
	Shellfish	43.5	42.8	46.9	44.7	48.3	58.7	58.0	58.7	59.0	57.8					
	Total	69.0	70.7	73.1	74.0	73.6	59.7	64.9	64.8	67.7	68.2					
Scottish based vessels																
- landings into UK	Demersal	88.3	82.9	76.7	81.3	89.4	101.6	115.0	110.5	118.2	127.5	112.1	123.5	115.3	119.8	127.5
	Pelagic	216.9	141.0	156.6	130.9	121.9	91.9	64.5	71.4	71.5	87.9	101.4	69.2	74.6	72.5	87.9
	Shellfish	54.7	58.6	66.4	64.3	68.7	110.0	138.9	161.2	153.0	141.7	121.4	149.2	168.3	155.1	141.7
	Total	359.9	282.5	299.7	276.5	280.1	303.4	318.4	343.1	342.7	357.2	334.9	341.9	358.1	347.4	357.2
	Rest of UK	Demersal	11.4	11.2	12.5	18.4	21.4	21.4	19.3	21.2	21.3	23.7	23.0	20.2	21.5	21.3
- landings abroad	Pelagic	111.2	84.8	56.8	76.0	83.0	22.5	27.1	19.2	29.8	62.9	24.8	29.1	20.1	30.2	62.9
	Shellfish	0.6	0.8	0.5	0.6	0.7	1.8	1.6	1.5	1.8	1.6	2.0	1.7	1.5	1.8	1.6
	Total	123.2	96.8	69.8	95.0	97.8	45.6	50.1	40.0	52.8	85.8	50.4	53.8	41.8	53.5	85.8
Other UK based vessels																
- landings into UK	Demersal	40.6	36.4	36.4	28.5	29.4	71.0	67.9	70.0	61.6	62.6	78.4	72.9	73.0	62.5	62.6
	Pelagic	21.4	22.9	29.8	25.2	23.1	7.8	9.4	12.6	11.0	10.2	8.6	10.1	13.2	11.2	10.2
	Shellfish	69.8	74.8	73.9	78.0	61.6	73.8	98.2	110.0	110.6	89.6	81.5	105.4	114.8	112.1	89.6
	Total	131.8	134.1	140.1	131.7	114.1	152.6	175.5	192.6	183.3	162.4	168.4	188.4	201.0	185.8	162.4
	Rest of UK	Demersal	24.6	24.0	22.5	22.8	35.0	29.5	30.7	35.6	35.2	38.6	31.7	32.0	36.1	35.2
- landings abroad	Pelagic	60.7	73.2	73.3	53.0	57.9	21.2	31.5	31.3	23.3	28.0	23.4	33.9	32.7	23.6	28.0
	Shellfish	7.7	3.8	5.0	4.5	3.0	13.3	5.3	7.9	6.0	4.1	14.7	5.7	8.3	6.1	4.1
	Total	92.9	100.9	100.8	80.3	87.7	69.5	66.4	69.9	64.9	67.3	76.7	71.2	73.0	65.8	67.3
Landings by UK vessels		Demersal	164.9	154.4	148.1	151.1	229.0	233.8	230.4	236.7	246.6	252.8	251.1	240.5	239.9	246.6
Landings by UK vessels	Pelagic	410.1	321.9	316.6	285.0	286.0	143.3	132.5	134.6	135.6	188.9	158.2	142.3	140.5	137.4	188.9
	Shellfish	132.8	137.9	145.8	147.4	134.0	198.9	244.0	280.6	271.4	237.1	219.6	262.0	292.9	275.1	237.1
	Total	707.8	614.2	610.4	583.5	579.7	571.2	610.3	645.7	643.7	672.7	630.5	655.4	673.9	652.4	672.7
Percent landed by Scottish based vessels		Demersal	80.5	60.9	80.3	66.0	53.7	58.3	56.3	58.9	60.3					
Percent landed by Scottish based vessels	Pelagic	80.0	70.2	67.4	72.6	71.7	79.8	69.1	67.3	74.7	79.8					
	Shellfish	41.6	43.0	45.9	44.0	51.8	56.2	57.6	58.0	57.0	60.5					
	Total	68.2	61.7	60.5	63.7	65.2	61.1	60.4	59.3	61.4	65.9					

Table 18. Voyages and landings by Scottish based vessels by landing district, 2008 and 2009

Voyages ending in district:	2008			2009		
	Number	Tonnes	Value (£000)	Number	Tonnes	Value (£000)
Eyemouth	5,300	1,914	4,883	5,384	2,451	6,056
Pittenweem	5,130	1,737	4,289	5,389	2,117	4,538
Aberdeen	2,266	7,057	8,227	2,108	3,139	5,579
Peterhead	2,658	109,741	96,944	2,579	108,490	97,692
Fraserburgh	6,354	27,135	45,572	5,515	35,157	46,563
Buckie	1,900	1,058	2,499	2,253	1,893	3,545
Scrabster	2,821	10,914	18,687	3,124	13,809	23,441
Orkney	3,613	2,952	5,566	3,519	3,350	6,257
Shetland	5,156	69,407	58,837	6,070	56,899	61,708
Stornoway	7,770	3,813	11,259	7,273	3,436	10,106
Lochinver	1,718	2,680	6,176	1,739	3,231	6,970
Kinlochbervie	635	4,879	9,177	748	7,132	11,793
Ullapool	2,783	4,230	9,329	2,897	6,139	13,149
Mallaig	2,779	3,705	9,538	2,596	3,550	7,890
Oban	3,926	3,231	8,006	3,871	2,855	6,792
Campbeltown	8,615	4,970	12,314	8,783	4,818	10,372
Ayr	5,938	7,672	9,195	6,013	7,398	9,205
Portree	6,831	2,685	9,729	6,657	1,870	7,716
Other UK	1,458	6,730	12,462	2,914	12,332	17,800
Denmark	87	19,510	4,043	99	11,978	4,819
Eire	138	3,181	3,397	159	4,514	6,909
France	113	782	2,120	112	668	2,003
Netherlands	296	4,973	9,056	241	4,726	7,390
Norway	46	32,653	22,468	84	70,787	58,053
Spain	179	3,162	6,164	90	1,868	5,894
Other foreign ports	142	30,721	5,580	28	3,281	722
Total	78,652	371,493	395,517	80,245	377,889	442,963

(1) When the Register of Buyers and Sellers (RBS) was introduced in September 2005, Sales Notes were not initially required for sales of shellfish and information on the value of such landings is consequently missing. The value has therefore been estimated for a number of landings, mostly shellfish, relating to voyages starting on or after 1 September 2005.

**Table 19. Liveweight and value of landings into the UK by UK vessels, by main species (over £5m value in 2009) and country of landing, 2005 to 2009**

		Tonnes (thousand)					Value (£ million) (1)				
		2005	2006	2007	2008	2009	2005	2006	2007	2008	2009
UK vessels into: Scotland	Cod	7.3	7.3	7.1	7.6	9.4	13.0	14.0	14.6	16.1	16.7
	Haddock	45.3	37.4	29.5	29.5	32.7	36.7	43.8	37.6	32.7	32.1
	Hake	1.5	1.8	2.2	3.5	5.7	4.1	5.0	3.0	6.2	10.5
	Megrim	1.8	1.9	2.3	2.5	2.6	3.8	4.6	5.3	6.9	6.8
	Monks	9.6	9.3	10.3	10.1	9.9	23.9	25.0	25.5	28.0	31.2
	Saithe	10.6	11.5	9.5	12.8	14.3	4.9	5.8	4.7	7.3	10.0
	Whiting	5.8	8.3	9.4	9.2	8.0	4.2	7.5	9.2	9.3	8.0
	Herring	71.4	57.1	45.2	32.4	25.2	14.4	13.2	8.4	8.3	7.7
	Mackerel	116.0	64.6	95.8	86.6	94.6	75.9	50.4	63.7	64.6	79.7
	Edible crabs	8.2	9.8	11.4	8.8	9.5	9.1	12.0	13.9	10.1	10.5
	Velvet crabs	1.8	2.6	2.9	2.7	2.8	3.0	4.8	5.9	5.8	6.1
	Lobsters	0.4	0.7	0.9	1.0	1.1	4.5	7.6	9.8	10.9	11.4
	Nephrops	25.2	29.6	33.8	32.8	31.5	67.9	89.3	104.3	95.5	78.3
	Scallops	9.8	8.6	8.9	10.1	9.8	15.7	17.8	18.2	25.1	19.1
	Other	51.6	38.8	42.0	33.5	20.5	27.5	22.9	24.1	23.9	23.5
	Total	366.3	289.2	311.1	283.1	277.3	308.7	323.7	348.3	350.7	351.6
England and Wales	Dover Sole	1.8	1.9	2.1	1.9	1.8	12.4	14.6	15.4	14.0	13.7
	Monks	2.8	2.8	3.4	2.8	2.8	6.4	6.7	8.3	7.9	8.4
	Edible crabs	8.0	9.8	10.6	10.4	9.8	9.9	13.2	14.4	13.7	11.5
	Cockles	13.1	11.1	11.1	13.9	2.5	8.0	5.0	7.2	6.9	7.6
	Lobsters	0.9	1.6	1.8	1.7	1.6	7.6	18.5	20.8	20.1	14.6
	Nephrops	3.9	5.5	4.1	2.3	3.7	8.4	13.8	10.5	5.5	7.3
	Scallops	10.4	10.1	11.5	12.3	17.0	16.4	15.4	20.0	19.5	24.2
	Whelks	10.2	11.2	12.4	13.1	12.5	6.2	6.5	7.4	9.0	7.1
	Other	59.3	55.7	53.9	46.1	45.2	57.4	56.0	63.7	53.6	53.4
	Total	110.4	109.6	110.9	104.6	97.0	132.5	149.8	167.7	150.2	147.9
Northern Ireland	Nephrops	4.7	5.9	6.2	7.9	7.1	7.0	9.2	8.0	10.0	10.1
	Other	10.3	11.7	11.6	12.4	12.5	7.8	11.0	11.7	14.5	9.3
	Total	15.0	17.6	17.8	20.3	19.6	14.7	20.2	19.7	24.5	19.4
UK	Cod	13.8	12.9	12.8	9.8	11.6	21.8	20.8	21.7	20.3	20.7
	Dover Sole	1.8	1.9	2.1	1.9	1.9	12.5	15.0	15.8	14.1	13.8
	Haddock	47.6	38.9	32.3	31.9	34.7	38.7	45.2	39.9	35.0	34.2
	Hake	2.6	2.7	2.8	4.1	6.4	6.8	7.2	4.6	7.8	11.8
	Lemon Sole	2.1	2.0	2.0	1.7	2.0	6.4	6.1	6.3	5.3	5.3
	Megrim	3.3	3.0	3.4	3.5	3.9	8.3	8.2	8.5	10.1	10.7
	Monks	12.6	12.2	13.8	13.1	12.9	30.6	32.0	34.1	36.5	40.1
	Saithe	11.4	12.2	10.0	12.9	14.4	5.4	6.1	4.9	7.4	10.1
	Whiting	8.9	12.1	13.1	11.4	10.1	5.7	9.8	11.8	10.7	9.3
	Herring	76.4	62.1	50.7	38.2	31.6	15.9	14.5	9.5	9.7	9.5
	Mackerel	120.6	70.4	100.3	90.7	100.3	78.3	54.9	67.1	67.8	84.5
	Cockles	13.2	11.3	11.3	14.0	2.6	8.1	5.3	7.4	7.2	7.7
	Edible crabs	16.6	20.4	23.2	20.1	20.0	19.2	25.8	29.3	24.5	22.7
	Velvet crab	2.3	3.8	3.7	3.3	3.2	3.7	6.4	7.1	6.6	6.8
	Lobsters	1.3	2.3	2.8	2.8	2.8	12.2	26.6	31.2	31.6	26.5
	Nephrops	33.8	41.0	44.1	42.9	42.3	84.0	114.2	126.5	115.5	95.8
	Scallops	20.6	19.0	20.8	23.0	27.6	32.7	33.7	38.8	46.3	44.4
	Squid	2.6	1.4	2.4	1.9	2.5	6.3	3.8	5.9	6.1	6.1
	Whelks	11.2	12.0	13.0	13.5	12.9	6.7	7.1	7.8	9.2	7.4
	Other	88.9	74.9	75.3	67.3	50.4	52.6	50.9	57.4	54.3	52.1
	Total	491.7	416.5	439.8	408.2	394.2	456.0	493.8	535.7	526.0	519.6

**Table 20. Liveweight and value of landings into Scotland by UK vessels, by main species (value of £2.0m in 2009) 2005 to 2009**

	Tonnes					Value (£ 000) (1)					£ per tonne (live weight)				
	2005	2006	2007	2008	2009	2005	2006	2007	2008	2009	2005	2006	2007	2008	2009
Cod	7,323	7,292	7,115	7,645	9,350	13,008	14,017	14,649	16,054	16,721	1,776	1,922	2,059	2,100	1,788
Haddock	45,282	37,392	29,509	29,488	32,681	36,747	43,764	37,579	32,679	32,133	812	1,170	1,273	1,108	983
Hake	1,530	1,846	2,154	3,487	5,702	4,069	4,992	3,013	6,214	10,506	2,659	2,705	1,398	1,782	1,843
Ling	2,948	2,616	2,511	2,571	3,579	3,239	3,137	3,084	3,161	4,204	1,099	1,199	1,228	1,229	1,175
Megrim	1,842	1,863	2,283	2,528	2,583	3,812	4,619	5,283	6,855	6,752	2,069	2,480	2,315	2,711	2,614
Monks	9,628	9,309	10,255	10,086	9,898	23,946	25,028	25,524	28,021	31,201	2,487	2,689	2,489	2,778	3,152
Saithe	10,551	11,497	9,545	12,783	14,264	4,876	5,809	4,659	7,334	9,963	462	505	488	574	698
Whiting	5,753	8,271	9,393	9,226	7,965	4,199	7,473	9,189	9,277	7,968	730	903	978	1,006	1,000
Other demersal	9,722	7,870	7,182	6,320	6,548	14,399	11,677	10,807	10,414	10,169	1,481	1,484	1,505	1,648	1,553
Total demersal	94,579	87,956	79,946	84,134	92,569	108,295	120,515	113,787	120,011	129,617	1,145	1,370	1,423	1,426	1,400
Herring	71,385	57,081	45,158	32,367	25,188	14,446	13,164	8,387	8,272	7,722	202	231	186	256	307
Mackerel	115,970	64,590	95,788	86,619	94,556	75,939	50,403	63,749	64,634	79,736	655	780	666	746	843
Other pelagic	29,851	22,318	24,305	16,390	1,889	1,511	1,935	3,138	1,655	342	51	87	129	101	181
Total pelagic	217,205	143,989	165,250	135,376	121,633	91,895	65,502	75,274	74,562	87,800	423	455	456	551	722
Edible crabs	8,248	9,795	11,439	8,831	9,511	9,106	12,030	13,855	10,126	10,514	1,104	1,228	1,211	1,147	1,105
Lobsters	414	710	894	1,026	1,097	4,467	7,595	9,837	10,949	11,369	10,791	10,701	11,002	10,671	10,360
Nephrops	25,199	29,616	33,782	32,765	31,492	67,872	89,288	104,321	95,475	78,268	2,693	3,015	3,088	2,914	2,485
Scallops	9,777	8,600	8,862	10,086	9,847	15,720	17,825	18,247	25,094	19,080	1,608	2,073	2,059	2,488	1,938
Squid	1,898	871	1,193	1,515	2,068	4,182	2,239	3,275	4,384	4,280	2,203	2,572	2,746	2,893	2,070
Velvet crabs	1,802	2,593	2,946	2,711	2,762	2,995	4,757	5,852	5,832	6,135	1,662	1,835	1,986	2,152	2,221
Other shellfish	7,138	5,096	6,766	6,668	6,360	4,204	3,932	3,803	4,287	4,501	589	772	562	643	708
Total shellfish	54,476	57,280	65,882	63,601	63,137	108,545	137,666	159,190	156,147	134,147	1,993	2,403	2,416	2,455	2,125
Total landings	366,260	289,226	311,078	283,111	277,340	308,736	323,684	348,252	350,720	351,564	843	1,119	1,120	1,239	1,268

(1) When the Register of Buyers and Sellers (RBS) was introduced in September 2005, Sales Notes were not initially required for sales of shellfish and information on the value of such landings is consequently missing. The value has therefore been estimated for a number of landings, mostly shellfish, relating to voyages starting on or after 1 September 2005.

Table 21. Liveweight and value (£) of landings into Scottish ports by UK vessels, by landing district and species type, 2005 to 2009

		2005		2006		2007		2008		2009	
		Tonnes	Value (£000)	Tonnes	Value (£000)	Tonnes	Value (£000)	Tonnes	Value (£000)	Tonnes	Value (£000)
Eyemouth	Demersal	1,776	1,853	1,123	1,484	437	489	231	247	281	313
	Pelagic	0	0	0	0	17	10	6	5	18	15
	Shellfish	1,235	3,248	1,965	5,644	2,403	6,574	2,110	5,555	2,472	6,340
	Total	3,010	5,101	3,088	7,128	2,858	7,072	2,348	5,808	2,771	6,669
Pittenweem	Demersal	5	5	16	25	7	10	5	7	2	2
	Pelagic	0	0	-	-	1	1	0	0	9	8
	Shellfish	1,444	3,301	1,631	3,950	1,824	4,642	1,736	4,287	2,155	4,614
	Total	1,449	3,306	1,648	3,975	1,832	4,653	1,741	4,294	2,165	4,624
Aberdeen	Demersal	11,573	10,934	6,717	8,370	3,311	4,563	2,571	3,234	1,876	2,126
	Pelagic	11,668	587	7,799	671	5,080	638	2,773	256	11	10
	Shellfish	1,922	3,663	2,194	5,152	2,927	6,755	2,254	5,687	1,623	3,938
	Total	25,164	15,184	16,710	14,193	11,318	11,956	7,598	9,177	3,510	6,073
Peterhead	Demersal	35,659	37,150	35,541	45,144	35,549	48,070	39,348	50,850	41,193	49,011
	Pelagic	79,058	37,114	66,986	32,879	79,057	36,097	70,635	39,338	66,925	44,318
	Shellfish	2,773	6,891	2,472	7,371	2,802	9,917	3,414	10,231	3,747	8,106
	Total	117,490	81,154	104,998	85,393	117,408	94,083	113,397	100,419	111,865	101,435
Fraserburgh	Demersal	12,475	13,012	11,299	14,577	8,917	11,921	9,194	12,105	8,889	10,865
	Pelagic	23,275	12,876	7,367	5,776	7,178	4,244	6,570	3,097	13,766	10,087
	Shellfish	10,955	26,219	11,462	33,058	12,659	38,517	12,487	36,891	13,656	27,496
	Total	46,705	52,107	30,129	53,411	28,755	54,683	28,251	52,093	36,311	48,448
Buckie	Demersal	667	894	368	598	219	404	65	155	69	133
	Pelagic	3	1	-	-	1	0	5	3	12	11
	Shellfish	1,919	3,975	1,338	2,912	1,245	2,881	1,008	2,374	1,853	3,463
	Total	2,589	4,870	1,706	3,509	1,465	3,285	1,077	2,533	1,933	3,607
Scrabster	Demersal	10,067	12,121	8,429	11,267	6,959	11,138	8,228	14,047	11,204	18,766
	Pelagic	12	5	0	1	0	0	1	1	7	1
	Shellfish	5,188	6,071	5,135	6,742	5,274	7,585	4,404	6,757	4,330	6,732
	Total	15,267	18,197	13,564	18,009	12,233	18,723	12,633	20,805	15,541	25,500
Orkney	Demersal	30	31	51	51	7	6	36	66	1	1
	Pelagic	3	3	8	10	8	4	7	4	3	3
	Shellfish	3,608	5,349	3,079	5,306	3,192	5,761	2,926	5,524	3,350	6,259
	Total	3,642	5,382	3,137	5,367	3,207	5,771	2,969	5,595	3,355	6,263
Shetland	Demersal	9,664	11,569	11,514	16,520	12,814	19,065	15,226	23,939	14,963	23,595
	Pelagic	102,191	41,165	61,614	26,016	73,578	34,133	55,318	31,845	40,448	33,234
	Shellfish	1,059	1,928	1,740	4,838	1,870	4,502	2,222	5,363	2,178	5,500
	Total	112,914	54,663	74,868	47,374	88,261	57,699	72,766	61,147	57,589	62,329
Stornoway	Demersal	172	169	125	250	142	168	119	162	89	119
	Pelagic	0	0	4	4	1	0	0	0	18	5
	Shellfish	3,465	8,627	4,089	12,501	4,056	11,526	3,708	11,130	3,345	10,066
	Total	3,637	8,796	4,218	12,754	4,199	11,695	3,827	11,292	3,452	10,190
Lochinver	Demersal	2,525	5,902	2,472	6,210	3,129	5,084	1,780	3,556	2,257	4,390
	Pelagic	-	-	-	-	9	6	-	-	0	0
	Shellfish	707	1,967	985	2,611	1,059	2,822	900	2,620	974	2,580
	Total	3,232	7,869	3,457	8,821	4,197	7,912	2,680	6,176	3,231	6,970
Kinlochbervie	Demersal	4,364	6,507	4,197	6,534	4,017	6,495	4,269	6,831	6,698	10,741
	Pelagic	8	2	7	1	-	-	0	0	0	0
	Shellfish	369	785	495	1,088	385	927	629	2,371	480	1,106
	Total	4,741	7,294	4,699	7,624	4,402	7,423	4,898	9,203	7,179	11,847
Ullapool	Demersal	3,770	5,902	4,363	6,829	2,838	4,274	2,170	3,809	4,221	8,360
	Pelagic	33	18	203	144	125	77	0	0	3	3
	Shellfish	1,417	3,741	1,945	4,794	2,031	4,786	2,158	5,681	1,974	4,864
	Total	5,220	9,661	6,511	11,767	4,994	9,136	4,328	9,490	6,198	13,227
Mallaig	Demersal	924	989	996	1,404	1,130	1,431	729	833	779	1,139
	Pelagic	953	126	0	0	6	1	-	-	133	29
	Shellfish	2,754	5,784	3,010	7,820	3,301	9,185	3,151	9,059	2,777	6,970
	Total	4,632	6,899	4,007	9,225	4,437	10,617	3,880	9,891	3,689	8,138
Oban	Demersal	299	390	84	131	105	130	28	27	14	13
	Pelagic	-	-	0	0	-	-	0	0	1	1
	Shellfish	3,047	5,843	3,032	7,170	3,429	8,788	3,429	8,488	2,876	6,850
	Total	3,346	6,233	3,116	7,301	3,535	8,919	3,457	8,515	2,891	6,864
Campbeltown	Demersal	68	61	81	95	172	179	86	80	21	20
	Pelagic	0	0	0	0	165	28	54	10	266	67
	Shellfish	4,454	8,439	5,017	10,620	6,769	15,080	5,879	13,900	5,294	11,286
	Total	4,523	8,501	5,098	10,715	7,107	15,286	6,019	13,991	5,581	11,373
Ayr	Demersal	476	714	481	895	172	329	43	58	9	18
	Pelagic	1	2	0	0	24	36	2	2	3	6
	Shellfish	6,084	6,439	5,486	8,445	8,269	10,450	8,508	10,493	8,187	10,232
	Total	6,561	7,155	5,967	9,340	8,465	10,815	8,553	10,553	8,200	10,255
Portree	Demersal	65	89	101	133	19	31	4	5	3	4
	Pelagic	-	-	-	-	-	-	5	1	10	2
	Shellfish	2,075	6,275	2,204	7,645	2,386	8,494	2,679	9,736	1,866	7,747
	Total	2,140	6,364	2,305	7,777	2,405	8,524	2,687	9,742	1,879	7,753
Total	Demersal	94,579	108,295	87,956	120,515	79,946	113,787	84,134	120,011	92,569	129,617
	Pelagic	217,205	91,895	143,989	65,502	165,250	75,274	135,376	74,562	121,633	87,800
	Shellfish	54,476	108,545	57,280	137,666	65,882	159,190	63,601	156,147	63,137	134,147
	Total	366,260	308,736	289,226	323,684	311,078	348,252	283,111	350,720	277,340	351,564

(1) When the Register of Buyers and Sellers (RBS) was introduced in September 2005, Sales Notes were not initially required for sales of shellfish and information on the value of such landings is consequently missing. The value has therefore been estimated for a number of landings, mostly shellfish, relating to voyages starting on or after 1 September 2005.

Table 22. Disposal of sea fish landed (1) into Scotland by UK vessels, 2005 to 2009

	Demersal					Pelagic					Shellfish				
	2005	2006	2007	2008	2009	2005	2006	2007	2008	2009	2005	2006	2007	2008	2009
Human consumption	94.0	87.6	79.5	83.5	91.8	187.5	122.4	150.3	125.6	121.6	54.5	57.3	65.9	63.6	63.1
Klondyked	0.0	-	0.0	0.0	0.0	0.0	-	-	-	-	-	0.0	0.0	0.0	0.0
Meal and oil	0.5	0.3	0.4	0.5	0.5	29.3	21.6	15.0	9.8	0.0	0.0	0.0	0.0	0.0	0.0
Dumped/ bait	0.1	0.1	0.1	0.2	0.2	0.1	-	-	-	0.0	0.0	-	0.0	0.0	0.0
Other	0.0	0.0	0.0	0.0	0.0	0.2	-	0.0	-	-	0.0	0.0	0.0	0.0	0.0
Total	94.6	88.0	79.9	84.1	92.6	217.2	144.0	165.3	135.4	121.6	54.5	57.3	65.9	63.6	63.1

(1) '000 tonnes

Table 23. Liveweight and value (£) of landings into Scotland by UK vessels, by landing district and main species, 2009

Eyemouth			Peterhead			Buckie			Shetland		
	Tonnes	£'000		Tonnes	£'000		Tonnes	£'000		Tonnes	£'000
Haddock	138	133	Catfish	192	294	Total demersal	69	133	Catfish	39	52
Lemon Sole	23	40	Cod	5,008	9,070	Total pelagic	12	11	Cod	2,431	4,245
Plaice	20	14	Dogfish spur	51	55	Edible crabs	39	39	Dogfish spur	28	35
Whiting	54	30	Haddock	18,527	17,996	Nephrops	253	547	Haddock	3,099	3,586
Other demersal	46	96	Hake	1,642	1,912	Scallops	537	874	Hake	183	207
Total demersal	281	313	Halibut	104	577	Squid	976	1,857	Halibut	23	153
Total pelagic	18	15	Lemon sole	295	669	Velvet crabs	29	49	Lemon sole	75	173
Edible crabs	211	226	Ling	846	961	Other shellfish	18	96	Ling	817	875
Lobsters	149	1,594	Megrim	435	1,024	Total shellfish	1,853	3,463	Megrim	677	1,939
Nephrops	1,792	4,001	Monks	1,743	5,522	Total landings	1,933	3,607	Monks	2,432	7,650
Scallops	235	384	Plaice	262	206				Plaice	196	147
Velvet crabs	72	116	Pollack	387	656				Pollack	186	379
Other shellfish	14	19	Roes	31	76				Saithe	2,187	1,380
Total shellfish	2,472	6,340	Saithe	7,750	5,575				Skates & rays	199	224
Total landings	2,771	6,669	Skates & rays	41	34				Tusk	45	30
			Turbot	21	152				Whiting	2,158	2,237
			Tusk	41	28				Witches	91	118
			Whiting	3,556	3,837				Other demersal	97	164
			Witches	152	213				Total demersal	14,963	23,595
			Other demersal	108	154				Herring	3,956	1,192
			Total demersal	41,193	49,011				Horse mackerel	51	9
			Herring	17,934	5,578				Mackerel	36,441	32,033
			Horse mackerel	786	217				Total pelagic	40,448	33,234
			Mackerel	47,225	38,421				Edible crabs	325	315
			Sprats	963	101				Green crabs	23	12
			Other pelagic	17	0				Lobsters	31	370
			Total pelagic	66,925	44,318				Nephrops	393	1,122
			Edible crabs	96	109				Scallops	912	2,498
			Nephrops	2,851	6,562				Squid	142	387
			Scallops	659	1,092				Velvet crabs	340	786
			Squid	124	270				Other shellfish	11	10
			Other shellfish	17	73				Total shellfish	2,178	5,500
			Total shellfish	3,747	8,106				Total landings	57,589	62,329
			Total landings	111,865	101,435						
Pittenweem			Fraserburgh			Scrabster			Stornoway		
	Tonnes	£'000		Tonnes	£'000		Tonnes	£'000		Tonnes	£'000
Total demersal	2	2	Cod	459	791	Blue ling	89	68	Total demersal	89	119
Total pelagic	9	8	Dogfish spur	22	29	Bream - rays	220	307	Total pelagic	18	5
Edible crabs	116	123	Greenland Halibut	22	40	Cod	754	1,340	Edible crabs	658	720
Lobsters	122	1,217	Haddock	3,782	2,262	Dogfish spur	73	83	Green crabs	31	17
Nephrops	1,524	2,595	Hake	130	99	Forkbeard	20	17	Lobsters	134	1,374
Razor fish	133	293	Halibut	62	401	Greenland - halibut	180	335	Nephrops	393	1,122
Scallops	74	116	Lemon sole	134	239	Gurnards - red	77	20	Scallops	912	2,498
Surf clams	94	105	Ling	204	268	Haddock	2,413	2,799	Squid	142	387
Velvet crabs	91	160	Megrim	246	604	Hake	1,630	3,804	Velvet crabs	340	786
Other shellfish	2	4	Monks	1,287	4,100	Lemon sole	21	35	Other shellfish	11	10
Total shellfish	2,155	4,614	Plaice	107	58	Ling	581	675	Total shellfish	2,178	5,500
Total landings	2,185	4,624	Saithe	579	382	Megrim	622	1,725	Total landings	57,589	62,329
			Whiting	1,407	1,009	Monks	1,753	5,160			
			Witches	324	389	Plaice	53	36			
			Other demersal	122	194	Pollack	22	40			
			Total demersal	8,889	10,865	Redfish	52	70			
			Herring	2,942	862	Saithe	1,854	1,278			
			Mackerel	10,824	9,226	Skates & rays	78	66			
			Total pelagic	13,766	10,087	Tusk	37	26			
			Edible crabs	335	446	Whiting	535	587			
			Lobsters	22	251	Witches	39	49			
			Nephrops	11,889	23,893	Other demersal	101	245			
			Scallops	953	1,874	Total demersal	11,204	18,766			
			Squid	390	929	Total pelagic	7	1			
			Velvet crabs	63	96	Edible crabs	2,829	3,318			
			Other shellfish	5	6	Lobsters	112	1,161			
			Total shellfish	13,656	27,496	Mussels	341	87			
			Total landings	36,311	48,448	Nephrops	153	417			
						Scallops	538	1,170			
						Squid	113	255			
						Velvet crabs	121	250			
						Whelks	99	54			
						Other shellfish	25	20			
						Total shellfish	4,330	6,732			
						Total landings	15,541	25,500			
Aberdeen			Orkney			Lochinver					
	Tonnes	£'000		Tonnes	£'000		Tonnes	£'000			
Cod	170	299	Total demersal	1	1	Bream - rays	224	411			
Haddock	1,251	1,285	Total pelagic	3	3	Haddock	121	147			
Hake	21	24	Edible crabs	1,830	1,964	Hake	1,306	2,669			
Lemon sole	39	90	Green crabs	136	77	Ling	306	369			
Saithe	213	152	Lobsters	146	1,505	Monks	189	636			
Whiting	84	93	Periwinkles	70	82	Saithe	31	28			
Other demersal	97	183	Scallops	150	417	Other demersal	80	130			
Total demersal	1,876	2,126	Velvet crabs	909	2,135	Total demersal	2,257	4,390			
Total pelagic	11	10	Whelks	101	53	Nephrops	903	2,417			
Edible crabs	294	314	Other shellfish	8	25	Squid	36	55			
Lobsters	130	1,286	Total shellfish	3,350	6,259	Other shellfish	35	107			
Nephrops	203	493	Total landings	3,355	6,263	Total shellfish	974	2,580			
Scallops	904	1,660				Total landings	3,231	6,970			
Velvet crabs	81	161									
Other shellfish	11	24									
Total shellfish	1,623	3,938									
Total landings	3,510	6,073									

Chart 7. Average prices of landings into Scotland by UK vessels, by species type, 1992 to 2009

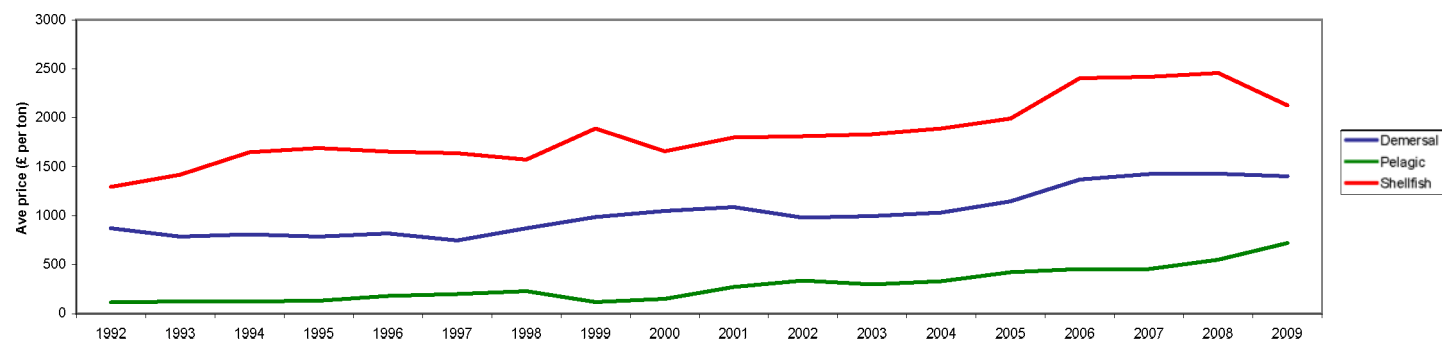


Table 23. continued

Kinlochbervie			Mallaig			Campbeltown			All ports		
Tonnes £'000			Tonnes £'000			Tonnes £'000			Tonnes £'000		
Black scabbardfish	57	71	Dogfish spur	51	72	Total demersal	21	20	Black scabbardfish	81	123
Blue ling	244	304	Haddock	202	204	Herring	266	67	Blue ling	360	397
Cod	413	789	Hake	107	81	Total pelagic	266	67	Bream - rays	515	833
Cuckoo ray	27	19	Ling	38	52	Edible crabs	423	422	Catfish	297	446
Dogfish spur	60	82	Megrim	46	81	Green crabs	22	12	Cod	9,350	16,721
Forkbeard	80	62	Monks	168	477	Lobsters	48	513	Cuckoo ray	30	20
Greenland halibut	114	197	Saithe	30	18	Nephrops	2,747	6,607	Dogfish spur	318	406
Gurnards - red	62	18	Skates & rays	29	25	Queen scallops	98	38	Forkbeard	149	128
Haddock	1,633	1,918	Whiting	23	21	Razor fish	247	664	Greenland halibut	317	574
Hake	99	95	Witches	46	47	Scallops	1,327	2,241	Gurnards - red	152	43
Ling	401	485	Other demersal	39	60	Velvet crabs	338	750	Haddock	32,681	32,133
Megrim	432	1,067	Total demersal	779	1,139	Whelks	35	16	Hake	5,702	10,506
Monks	1,170	3,988	Herring	62	16	Other shellfish	10	22	Halibut	223	1,337
Redfish	89	108	Sprats	70	14	Total shellfish	5,294	11,286	Lemon sole	607	1,282
Saithe	1,420	1,026	Total pelagic	133	29	Total landings	5,581	11,373	Ling	3,579	4,204
Thornback ray	38	49	Edible crabs	225	252				Megrim	2,583	6,752
Tusk	77	44	Nephrops	2,059	5,651				Monks	9,898	31,201
Whiting	114	116	Razor fish	93	263				Plaice	672	486
Other demersal	171	304	Scallops	355	643				Pollack	636	1,148
Total demersal	6,698	10,741	Velvet crabs	30	59				Redfish	175	209
Edible crabs	167	171	Other shellfish	14	101				Roes	40	152
Nephrops	167	480	Total shellfish	2,777	6,970				Saithe	14,264	9,963
Squid	103	222	Total landings	3,689	8,138				Skates & rays	438	427
Other shellfish	44	232							Thornback ray	55	71
Total shellfish	480	1,106							Turbot	42	309
Total landings	7,179	11,847							Tusk	229	147

Ullapool			Oban			Ayr		
Tonnes £'000			Tonnes £'000			Tonnes £'000		
Bream - rays	67	112	Total demersal	14	13	Total demersal	9	18
Cod	74	122	Total pelagic	1	1	Total pelagic	3	6
Forkbeard	27	24	Edible crabs	705	685	Lobsters	52	550
Haddock	1,492	1,773	Lobsters	79	787	Nephrops	1,896	4,421
Hake	573	1,604	Nephrops	859	2,927	Queen scallops	4,388	1,821
Ling	367	499	Razor fish	102	272	Razor fish	124	270
Megrim	91	233	Scallops	791	1,323	Scallops	1,587	3,072
Monks	1,099	3,509	Velvet crabs	329	824	Whelks	114	63
Saithe	192	120	Other shellfish	10	32	Other shellfish	27	35
Skates & rays	22	22	Total shellfish	2,876	6,850	Total shellfish	8,187	10,232
Whiting	20	28	Total landings	2,891	6,864	Total landings	8,200	10,255
Witches	104	183						
Other demersal	92	130						
Total demersal	4,221	8,360						
Total pelagic	3	3						
Edible crabs	872	968						
Nephrops	811	3,300						
Scallops	118	196						
Squid	156	248						
Other shellfish	16	154						
Total shellfish	1,974	4,864						
Total landings	6,198	13,227						

Portree		
Tonnes £'000		
Total demersal	3	4
Total pelagic	10	2
Edible crabs	355	410
Nephrops	1,233	6,536
Scallops	204	435
Velvet crabs	51	114
Other shellfish	24	252
Total shellfish	1,866	7,747
Total landings	1,879	7,753

(1) liveweight landings of 20 tonnes or more.

Chart 8. Liveweight landings into Scotland by UK vessels, by species type, 1969 to 2009

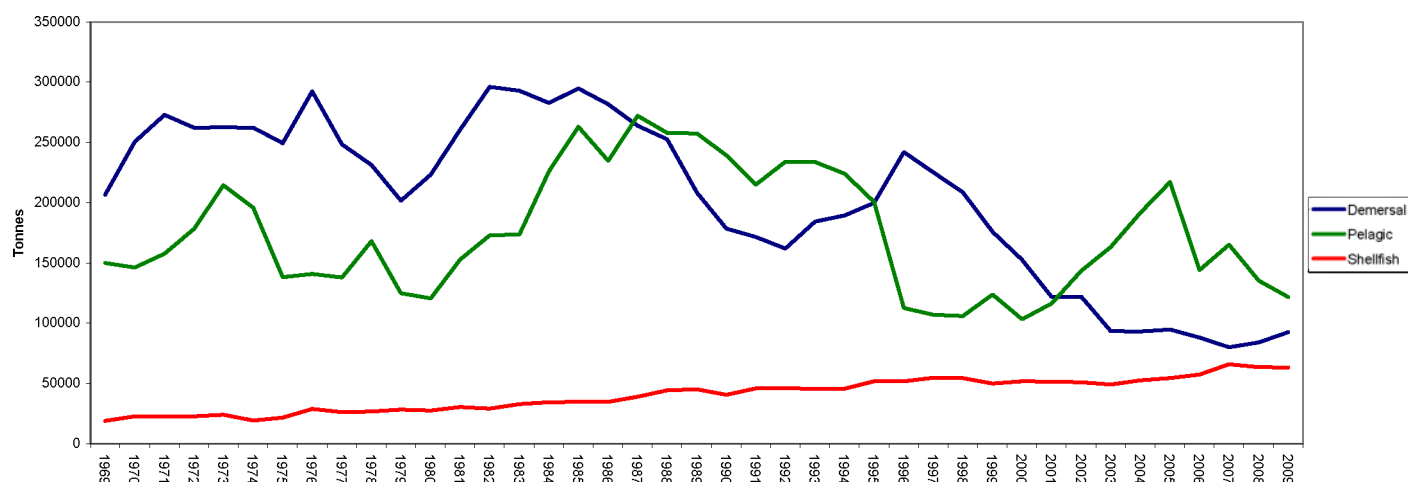


Chart 9. Average prices of landings into Scotland, by species type and month, 2009

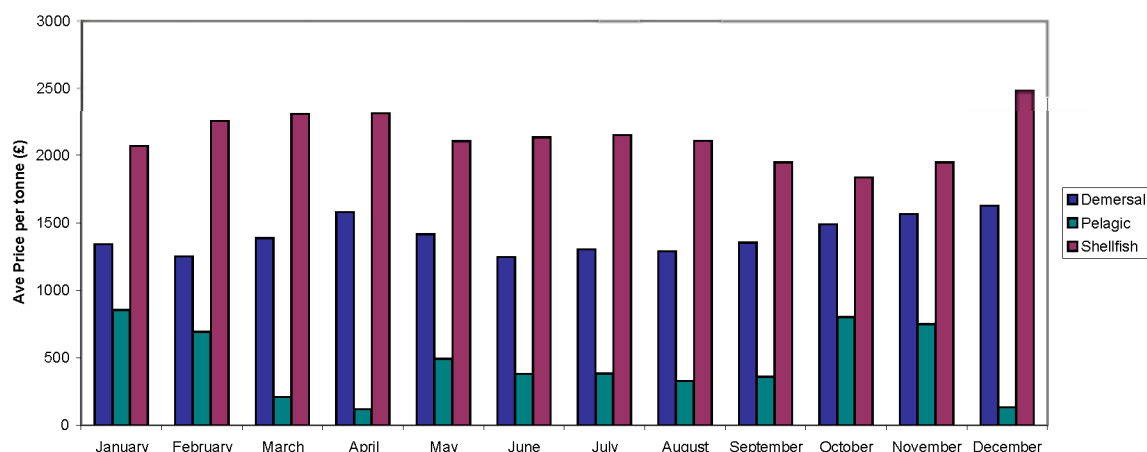


Table 24. Liveweight and value of landings into Scotland by foreign vessels, by main (1) species, 2005 to 2009

	Tonnes					Value (£'000) (1)				
	2005	2006	2007	2008	2009	2005	2006	2007	2008	2009
Blue ling	3,641	3,534	3,534	2,517	2,906	4,915	5,102	3,961	2,453	1,784
Black scabbardfish	2,403	2,172	2,499	3,139	3,100	4,682	4,685	3,815	3,822	3,573
Bream - Rays	-	-	5	62	646	-	-	4	67	1,222
Cod	1,937	713	602	507	603	3,376	1,445	1,298	1,074	1,141
Greenland halibut	275	275	164	362	833	591	589	438	558	1,576
Hake	2,250	1,876	2,066	4,186	5,099	9,763	8,115	3,338	6,894	10,222
Ling	780	667	839	1,409	1,157	872	743	1,193	1,677	1,345
Monks	1,227	1,214	1,572	1,829	2,114	2,999	3,358	4,027	4,464	6,530
Roundnose grenadier	3,966	3,184	2,837	2,204	1,852	4,710	4,022	1,152	1,751	1,148
Saithe	7,823	8,137	8,208	5,406	5,116	4,525	4,181	3,934	2,297	3,524
Other demersal	5,683	4,169	4,265	3,597	4,177	5,860	4,644	6,057	3,786	4,276
<b>Total demersal</b>	<b>29,984</b>	<b>25,942</b>	<b>26,593</b>	<b>25,218</b>	<b>27,603</b>	<b>42,292</b>	<b>36,882</b>	<b>29,219</b>	<b>28,843</b>	<b>36,340</b>
Blue whiting	14,270	17,820	19,971	43,949	17,250	727	2,488	3,409	5,715	3,092
Herring	15,338	26,331	19,571	19,263	10,140	4,163	6,632	4,119	5,036	3,210
Horse Mackerel	850	1,511	543	28	5,656	172	394	134	6	2,200
Mackerel	13,742	22,963	23,102	20,253	21,609	13,568	18,595	15,476	18,560	17,784
Other pelagic	-	474	164	3,588	3,925	-	2	10	1,464	705
<b>Total pelagic</b>	<b>44,200</b>	<b>69,100</b>	<b>63,352</b>	<b>87,082</b>	<b>58,579</b>	<b>18,630</b>	<b>28,111</b>	<b>23,149</b>	<b>30,781</b>	<b>26,990</b>
<b>Total shellfish</b>	<b>526</b>	<b>693</b>	<b>764</b>	<b>929</b>	<b>1,086</b>	<b>648</b>	<b>1,949</b>	<b>2,365</b>	<b>1,232</b>	<b>1,832</b>
<b>Total</b>	<b>74,711</b>	<b>95,735</b>	<b>90,709</b>	<b>113,229</b>	<b>87,269</b>	<b>61,569</b>	<b>66,943</b>	<b>54,732</b>	<b>60,856</b>	<b>65,162</b>

(1) landings of £1.0 million or more in 2005

Table 25. Liveweight and value of landings into Scotland by foreign vessels, by country of origin, 2005 to 2009

	Tonnes					Value (£'000) (1)				
	2005	2006	2007	2008	2009	2005	2006	2007	2008	2009
Denmark	8,675	14,731	12,139	6,835	9,743	1,486	5,604	5,237	5,776	7,112
Eire	16,337	18,989	15,753	10,727	4,740	9,833	10,248	8,839	7,179	3,612
Faroe	18,939	18,780	19,919	26,392	21,113	17,450	13,109	12,613	11,701	13,329
France	14,888	15,467	16,519	15,895	14,092	21,124	19,254	17,074	15,636	16,521
Germany	1,486	354	967	2,008	283	656	866	1,013	1,392	861
Iceland	1,454	1,768	-	1,605	-	71	156	-	144	-
Netherlands	-	16	124	82	53	-	30	248	152	102
Norway	9,404	20,782	21,611	46,157	26,626	1,740	9,289	6,094	12,551	9,975
Poland	359	2,665	979	-	-	160	1,207	617	-	-
Spain	2,674	2,183	1,779	3,164	4,800	8,866	7,181	2,677	5,922	8,866
Sweden	495	-	919	363	5,819	183	-	320	401	4,783
<b>Total</b>	<b>74,711</b>	<b>95,735</b>	<b>90,709</b>	<b>113,229</b>	<b>87,269</b>	<b>61,569</b>	<b>66,943</b>	<b>54,732</b>	<b>60,856</b>	<b>65,162</b>

Table 26. Liveweight and value of landings into Scotland by foreign vessels, by landing district, 2005 to 2009

	Tonnes					Value (£'000) (1)				
	2005	2006	2007	2008	2009	2005	2006	2007	2008	2009
North east ports (2)	21,797	33,213	31,387	37,787	38,579	11,929	17,325	15,269	17,855	17,295
Other east coast	-	-	-	-	-	-	-	-	-	-
North mainland ports (3)	9,942	6,389	6,114	5,535	8,971	8,662	7,660	6,548	6,368	11,324
Orkney/Shetland	22,825	35,955	32,652	49,847	20,386	7,099	10,990	10,118	13,727	10,960
North west/WI ports (4)	20,146	20,145	20,556	20,059	19,334	33,879	30,925	22,797	22,906	25,583
South west ports (5)	-	34	-	-	-	-	42	-	-	-
<b>Total</b>	<b>74,711</b>	<b>95,735</b>	<b>90,709</b>	<b>113,229</b>	<b>87,269</b>	<b>61,569</b>	<b>66,943</b>	<b>54,732</b>	<b>60,856</b>	<b>65,162</b>

(1) When the Register of Buyers and Sellers (RBS) was introduced in September 2005, Sales Notes were not initially required for sales of shellfish and information on the value of such landings is consequently missing. The value has therefore been estimated for a number of landings, mostly shellfish, relating to voyages starting on or after 1 September 2005

(2) Aberdeen to Buckie port districts; (3) Scrabster to Kinlochbervie; (4) Lochinver to Oban; (5) Campbeltown to Ayr

Table 27. Liveweight and value of landings by Scottish based vessels, by main (1) species, 2005 to 2009

	Landings into UK & abroad (tonnes)														
	Into UK					Abroad					Total				
	2005	2006	2007	2008	2009	2005	2006	2007	2008	2009	2005	2006	2007	2008	2009
Cod	7,133	7,106	6,971	7,362	8,951	188	230	254	244	600	7,321	7,336	7,226	7,606	9,552
Haddock	44,581	36,950	29,103	28,766	31,647	75	53	90	110	155	44,655	37,003	29,192	28,876	31,802
Hake	1,596	1,838	2,077	3,458	5,679	544	685	647	1,493	1,206	2,141	2,523	2,724	4,951	6,885
Ling	2,775	2,440	2,360	2,496	3,481	44	63	86	172	215	2,819	2,503	2,446	2,669	3,696
Megrim	1,839	1,880	2,303	2,640	2,765	104	111	119	347	411	1,942	1,991	2,422	2,987	3,176
Monks	9,316	8,943	9,872	10,119	9,782	1,021	907	978	1,648	1,497	10,336	9,850	10,850	11,767	11,279
Plaice	933	1,004	777	830	675	5,502	5,041	4,605	4,264	4,329	6,435	6,045	5,382	5,093	5,003
Saithe	7,927	8,872	8,284	11,342	12,783	247	30	66	611	100	8,174	8,902	8,350	11,952	12,883
Whiting	6,018	8,466	9,473	9,090	7,901	49	62	29	46	68	6,067	8,528	9,502	9,136	7,969
Other demersal	6,207	5,418	5,471	5,169	5,758	3,588	3,985	5,673	9,499	5,464	9,795	9,403	11,144	14,667	11,222
Total demersal	88,325	82,916	76,691	81,272	89,421	11,361	11,168	12,548	18,433	14,045	99,686	94,085	89,239	99,705	103,466
Herring	70,559	55,077	42,048	32,036	25,197	18,825	17,970	16,073	13,533	21,044	89,384	73,047	58,121	45,569	46,241
Mackerel	116,235	63,580	90,339	82,383	94,736	15,941	15,133	17,728	26,539	57,021	132,176	78,713	108,067	108,922	151,757
Other pelagic	30,062	22,318	24,253	16,474	2,006	76,440	51,721	22,953	35,908	4,976	106,503	74,040	47,206	52,382	6,982
Total pelagic	216,856	140,975	156,641	130,893	121,939	111,207	84,825	56,754	75,980	83,041	328,063	225,800	213,395	206,873	204,980
Edible crabs	6,418	8,384	10,000	7,684	8,191	61	85	89	50	19	6,479	8,469	10,089	7,734	8,210
Lobsters	406	708	885	1,029	1,102	2	3	1	0	0	408	711	886	1,029	1,102
Nephrops	24,928	29,449	32,134	30,313	30,269	167	204	206	198	159	25,094	29,652	32,340	30,511	30,427
Queen scallops	3,968	2,862	4,535	4,402	4,925	0	162	0	35	409	3,968	3,024	4,535	4,437	5,334
Scallops	12,454	10,969	12,371	14,534	17,327	3	1	-	14	1	12,458	10,970	12,371	14,548	17,328
Squid	1,916	873	1,194	1,511	2,072	140	95	53	127	94	2,056	968	1,246	1,638	2,166
Velvet crabs	1,802	2,594	2,944	2,714	2,778	-	-	-	-	0	1,802	2,594	2,944	2,714	2,778
Other shellfish	2,782	2,733	2,328	2,158	2,042	267	212	124	146	55	3,049	2,945	2,451	2,304	2,097
Total shellfish	54,674	58,572	66,389	64,345	68,705	640	761	473	570	737	55,313	59,334	66,862	64,915	69,442
Total landings	359,855	282,463	299,721	276,510	280,066	123,208	96,755	69,774	94,983	97,824	483,062	379,218	369,496	371,493	377,889

	Landings into UK & abroad (value £'000) (2)														
	Into UK					Abroad					Total				
	2005	2006	2007	2008	2009	2005	2006	2007	2008	2009	2005	2006	2007	2008	2009
Cod	12,671	13,654	14,380	15,532	16,078	301	399	637	591	1,165	12,971	14,053	15,017	16,123	17,244
Haddock	36,266	43,334	37,104	32,123	31,411	66	48	138	124	141	36,332	43,382	37,241	32,247	31,553
Hake	4,203	4,939	2,949	6,174	10,523	1,455	2,948	1,086	2,239	3,053	5,657	7,888	4,035	8,413	13,576
Ling	3,072	2,937	2,899	3,072	4,096	90	67	107	186	349	3,163	3,004	3,006	3,258	4,444
Megrim	3,847	4,726	5,390	7,224	7,273	393	264	292	679	1,020	4,240	4,989	5,682	7,903	8,293
Monks	23,003	23,615	24,634	28,198	31,075	4,191	3,046	2,600	3,874	5,279	27,195	26,662	27,234	32,072	36,354
Plaice	853	874	689	658	499	7,433	6,934	6,326	6,005	5,330	8,286	7,808	7,014	6,662	5,829
Saithe	3,749	4,564	4,032	6,494	8,910	138	17	55	342	97	3,887	4,582	4,087	6,836	9,007
Whiting	4,248	7,561	9,224	9,171	7,885	29	50	32	38	52	4,277	7,611	9,255	9,209	7,937
Other demersal	9,637	8,770	9,207	9,525	9,742	7,260	7,651	8,037	7,167	4,821	16,897	16,421	17,244	16,693	14,563
Total demersal	101,549	114,975	110,507	118,171	127,493	21,355	21,425	19,309	21,246	21,308	122,904	136,400	129,816	139,416	148,801
Herring	14,276	12,711	7,792	8,216	7,724	4,109	6,912	6,453	2,023	6,791	18,385	19,623	14,245	10,239	14,516
Mackerel	76,031	49,816	60,536	61,615	79,838	13,128	14,079	10,043	24,751	54,903	89,158	63,896	70,580	86,366	134,742
Other pelagic	1,554	1,937	3,095	1,691	374	5,231	6,147	2,732	2,992	1,156	6,786	8,084	5,827	4,683	1,530
Total pelagic	91,861	64,465	71,423	71,523	87,937	22,468	27,138	19,229	29,766	62,851	114,329	91,602	90,652	101,289	150,788
Edible crabs	6,885	10,232	11,953	8,667	9,003	50	47	69	30	15	6,934	10,280	12,022	8,698	9,018
Lobsters	4,360	7,592	9,732	10,959	11,375	10	22	11	2	2	4,370	7,614	9,743	10,961	11,377
Nephrops	67,463	88,940	101,012	90,340	76,264	751	932	1,144	947	1,037	68,214	89,872	102,156	91,287	77,302
Queen scallops	1,849	2,045	1,693	1,639	2,048	0	70	0	15	155	1,849	2,115	1,693	1,653	2,202
Scallops	20,167	20,886	25,606	28,459	29,934	5	2	-	25	2	20,172	20,888	25,606	28,485	29,936
Squid	4,202	2,247	3,280	4,377	4,320	733	363	188	435	344	4,935	2,609	3,467	4,812	4,664
Velvet crabs	2,994	4,758	5,845	5,832	6,151	-	-	-	-	0	2,994	4,758	5,845	5,832	6,152
Other shellfish	2,071	2,220	2,076	2,723	2,647	274	137	68	361	77	2,345	2,357	2,143	3,084	2,723
Total shellfish	109,989	138,920	161,197	152,997	141,743	1,823	1,573	1,479	1,816	1,632	111,812	140,493	162,676	154,813	143,374
Total landings	303,399	318,360	343,127	342,690	357,172	45,646	50,135	40,017	52,827	85,790	349,045	368,495	383,144	395,517	442,963

	Landings into UK & abroad (value £'000) (2009 prices)														
	Into UK					Abroad					Total				
	2005	2006	2007	2008	2009	2005	2006	2007	2008	2009	2005	2006	2007	2008	2009
Cod	13,985	14,662	15,009	15,743	16,078	332	429	665	599	1,165	14,317	15,091	15,674	16,342	17,244
Haddock	40,029	46,533	38,727	32,560	31,411	73	51	144	126	141	40,102	46,585	38,871	32,686	31,553
Hake	4,639	5,304	3,078	6,258	10,523	1,605	3,166	1,134	2,269	3,053	6,244	8,470	4,212	8,527	13,576
Ling	3,391	3,154	3,026	3,114	4,096	100	72	112	189	349	3,491	3,225	3,137	3,302	4,444
Megrim	4,246	5,075	5,626	7,322	7,273	433	283	305	688	1,020	4,680	5,358	5,931	8,010	8,293
Monks	25,390	25,359	25,712	28,582	31,075	4,626	3,271	2,714	3,927	5,279	30,016	28,630	28,426	32,509	36,354
Plaice	942	939	719	667	499	8,204	7,446	6,602	6,086	5,330	9,145	8,385	7,321	6,753	5,829
Saithe	4,138	4,901	4,208	6,583	8,910	152	19	58	346	97	4,290	4,920	4,266	6,929	9,007
Whiting	4,689	8,119	9,627	9,296	7,885	32	54	33	39	52	4,721	8,173	9,660	9,335	7,937
Other demersal	10,637	9,417	9,610	9,655	9,742	8,013	8,216	8,389	7,265	4,821	18,650	17,634	17,999	16,920	14,563
Total demersal	112,086	123,463	115,343	119,779	127,493	23,571	23,006	20,154	21,535	21,308	135,657	146,470	135,498	141,314	148,801
Herring	15,757	13,649	8,133	8,328	7,724	4,535	7,422	6,735	2,051	6,791	20,293	21,071	14,869	10,379	14,516
Mackerel	83,920	53,494	63,186	62,454	79,838	14,490	15,118	10,483	25,088	54,903	98,410	68,613	73,669	87,542	134,742
Other pelagic	1,716	2,080	3,230	1,714	374	5,774	6,600	2,852	3,033	1,156	7,490	8,681	6,082	4,747	1,530
Total pelagic	101,393	69,224	74,549	72,496	87,937	24,800	29,141	20,070	30,171	62,851	126,192	98,365	94,620	102,667	150,788
Edible crabs	7,599	10,988	12,476	8,785	9,003	55	51	72	31	15	7,654	11,038	12,548	8,816	9,018
Lobsters	4,812	8,152	10,158	11,108	11,375	11	24	11	2	2	4,824	8,176	10,169	11,110	11,377
Nephrops	74,463	95,506	105,433	91,570	76,264	829	1,001	1,194	960	1,037	75,292	96,507	106,627	92,530	77,302
Queen scallops	2,040	2,196	1,767	1,661	2,048	0	75	0	15	155	2,040	2,271	1,767	1,676	2,202
Scallops	22,260	22,428	26,726	28,847	29,934	5	2	-	26	2	22,265	22,430	26,726	28,872	29,936
Squid	4,638	2,412	3,423	4,436	4,320	809	390	196	441	344	5,447	2,802	3,619	4,877	4,664
Velvet crabs	3,304	5,109	6,101	5,912	6,151	-	-	-	-	0	3,304	5,109	6,101	5,912	6,152
Other shellfish	2,285	2,384	2,167	2,760	2,647	303	147	71	366	77	2,588	2,531	2,237	3,126	2,723
Total shellfish	121,402	149,176	168,251	155,080	141,743	2,012	1,689	1,544	1,840	1,632	123,415	150,865	169,795	156,920	143,374
Total landings	334,881	341,863	358,144	347,355	357,172	50,383	53,836	41,768	53,546	85,790	385,264	395,700	399,912	400,902	442,992



Chart 10. Value of landings at 2009 prices per Scottish based over 10 metres vessel, by vessel type 2000 to 2009

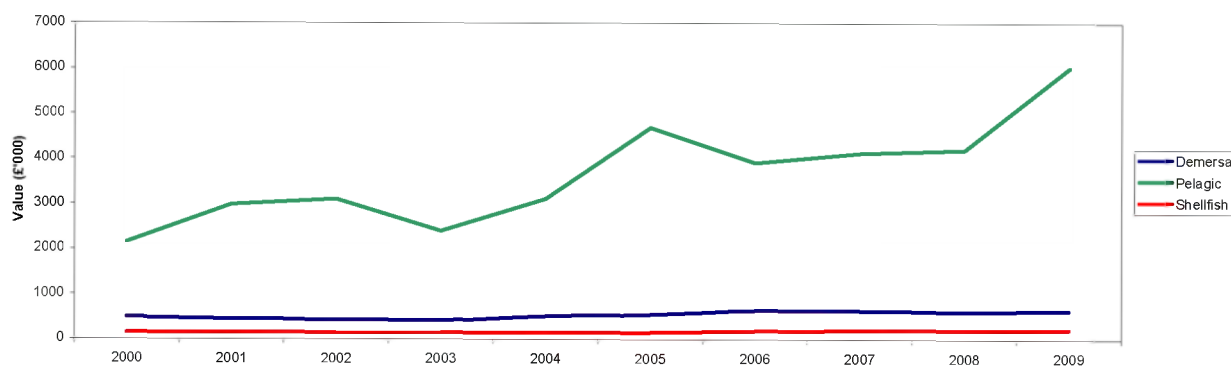


Table 28. Liveweight and value of landings abroad by Scottish based vessels, by country of landing, 2005 to 2009

	Tonnes					Value (£ thousand) (1)				
	2005	2006	2007	2008	2009	2005	2006	2007	2008	2009
EU: Denmark	60,730	45,244	32,244	19,510	11,978	8,517	8,170	8,706	4,043	4,819
Eire	359	5,580	4,456	3,181	4,514	1,015	2,465	1,882	3,397	6,909
France	309	206	405	782	668	120	419	894	2,120	2,003
Germany	7,995	6,032	1,847	-	-	1,913	1,455	269	-	-
Netherlands	7,645	6,934	6,219	4,973	4,726	13,080	13,141	12,172	9,056	7,390
Spain	3,317	2,176	2,006	3,162	1,868	8,096	6,030	4,306	6,164	5,894
Non-EU: Faroes	9,103	4,281	-	-	-	574	569	-	-	-
Iceland	16,311	2,584	-	-	-	1,100	351	-	-	-
Mauritius	-	-	-	833	448	-	-	-	187	8
Morocco	-	-	-	28,776	2,469	-	-	-	4,467	260
Norway	16,670	21,978	20,909	32,653	70,787	10,255	15,219	10,457	22,468	58,053
South Africa	-	-	-	625	354	-	-	-	552	427
Other	769	1,741	1,687	12	9	976	2,315	1,330	24	27
<b>Total</b>	<b>123,208</b>	<b>96,755</b>	<b>69,774</b>	<b>94,508</b>	<b>97,824</b>	<b>45,646</b>	<b>50,135</b>	<b>40,017</b>	<b>52,478</b>	<b>85,790</b>

(1) When the Register of Buyers and Sellers (RBS) was introduced in September 2005, Sales Notes were not initially required for sales of shellfish and information on the value of such landings is consequently missing. The value has therefore been estimated for a number of landings, mostly shellfish, relating to voyages starting on or after 1 September 2005.

Table 29. Liveweight and value of landings from specified ICES areas by Scottish based vessels, by main (1) species, 2009

ICES area	Liveweight (tonnes)										Value (£'000) (1)									
	North sea IV a	IV b	Area II a	Faroes V b	West Scotland VI a	Irish sea VI b	Irish sea VII a	Rest of area VII	Other	Total	North sea IV a	IV b	Area II a	Faroes V b	West Scotland VI a	Irish sea VI b	Irish sea VII a	Rest of area VII	Other	Total
Cod	8,085	963	-	338	104	48	1	9	4	9,552	14,370	1,911	-	660	188	90	2	16	7	17,244
Haddock	21,067	5,171	-	91	2,366	2,951	1	165	-	31,802	20,144	4,736	-	139	2,729	3,639	0	166	-	31,553
Hake	3,794	274	-	8	2,045	2	0	762	0	6,885	6,905	312	-	12	4,544	1	0	1,801	0	13,576
Halibut	168	30	0	10	7	2	-	0	-	218	1,004	200	0	63	41	9	-	0	-	1,317
Lemon sole	404	251	-	3	14	14	0	50	0	737	894	535	-	12	28	22	0	159	0	1,651
Ling	2,149	15	0	110	941	412	0	71	-	3,696	2,410	19	0	141	1,280	483	0	111	-	4,444
Megrim	1,447	2	0	13	940	160	0	613	-	3,176	3,829	4	1	28	2,547	302	0	1,583	-	8,293
Monks	7,510	108	152	173	864	1,141	1	1,242	87	11,279	23,469	307	403	601	3,085	3,975	2	4,248	264	36,354
Plaice	523	4,412	-	4	34	0	2	27	0	5,003	385	5,377	-	7	27	0	1	32	0	5,829
Red mullet	8	7	-	-	0	-	-	171	0	186	21	32	-	-	0	-	-	1,008	0	1,061
Saithe	8,242	578	0	685	2,858	519	-	1	-	12,883	5,661	475	0	545	2,000	324	-	1	-	9,007
Turbot	33	103	-	0	2	1	0	8	0	148	244	801	-	0	14	4	2	60	0	1,126
Whiting	7,096	360	-	33	354	12	0	114	0	7,969	7,107	284	-	37	398	16	0	93	0	7,937
Witches	544	30	0	0	85	101	0	72	-	834	694	36	0	1	91	200	0	106	-	1,128
Other demersal	2,004	4,189	97	337	1,416	134	8	544	370	9,099	2,855	1,819	138	499	1,732	146	18	1,032	42	8,280
Total demersal	63,073	16,492	250	1,808	12,031	5,495	15	3,840	462	103,466	89,992	16,849	543	2,746	18,703	9,211	26	10,415	315	148,801
Herring	10,249	3,757	25,477	-	6,750	-	8	1	-	46,241	3,322	1,355	7,658	-	2,177	-	1	1	-	14,516
Mackerel	47,013	207	-	-	80,218	-	1	24,029	289	151,757	44,446	159	-	-	69,262	-	1	20,671	204	134,742
Other pelagic	84	2,550	18	-	435	-	-	1,263	2,632	6,982	25	591	0	-	72	-	-	371	472	1,530
Total pelagic	57,346	6,514	25,494	-	87,403	-	9	25,294	2,922	204,980	47,792	2,105	7,658	-	71,511	-	2	21,043	676	150,788
Edible crabs	2,326	745	-	-	5,122	1	10	5	0	8,210	2,557	797	-	-	5,647	1	12	5	0	9,018
Lobsters	306	422	-	-	326	-	47	1	0	1,102	3,201	4,288	-	-	3,377	-	504	8	0	11,377
Nephrops	13,516	5,071	-	-	11,462	-	151	227	1	30,427	28,093	10,762	-	-	36,961	-	264	1,220	2	77,302
Queen scallops	10	6	-	-	1,740	-	3,578	-	-	5,334	9	10	-	-	664	-	1,520	-	-	2,202
Razor clam	13	133	-	-	559	-	0	-	-	706	16	293	-	-	1,441	-	1	-	-	1,751
Scallops	3,152	1,665	-	-	3,094	-	4,070	5,346	0	17,328	6,895	2,864	-	-	5,636	-	7,267	7,274	0	29,936
Squid	1,632	42	-	5	140	239	0	108	0	2,166	3,450	98	-	9	300	407	0	399	0	4,664
Velvet crabs	1,464	272	-	-	1,040	-	0	1	-	2,778	3,320	477	-	-	2,352	-	-	2	-	6,152
Other shellfish	786	113	0	-	129	1	307	55	-	1,392	390	119	1	-	266	4	111	82	-	972
Total shellfish	23,205	8,470	0	5	23,614	240	8,164	5,743	1	69,442	47,931	19,708	1	9	56,644	412	9,677	8,991	2	143,374
Total landings	143,625	31,476	25,744	1,813	123,047	5,735	8,187	34,876	3,385	377,889	185,716	38,662	8,201	2,755	146,858	9,623	9,705	40,449	993	442,963

(1) Total value over £1.0m



Table 30. Liveweight and value of landings by Scottish based vessels, by main (1) species and overall vessel length group, 2009

	Liveweight (tonnes)										Total	Value (£'000)												Total
	Overall vessel length group (metres)											Overall vessel length group (metres)												
	<8	8-10	>10-12	>12-15	>15-18	>18-24	>24-30	>30-40	>40-50	over 50		<8	8-10	>10-12	>12-15	>15-18	>18-24	>24-30	>30-40	>40-50	over 50			
Cod	4	10	6	19	144	2,982	5,302	659	190	235	9,552	9	17	10	32	254	5,310	9,524	1,298	387	404	17,244		
Haddock	0	8	3	296	580	10,735	15,857	3,689	12	623	31,802	0	7	3	187	373	9,231	15,967	5,046	15	725	31,553		
Hake	0	1	0	11	35	612	3,309	2,571	34	312	6,885	0	1	0	9	28	596	6,577	5,341	32	992	13,576		
Halibut	0	0	0	4	13	100	84	13	1	2	218	0	0	1	23	79	637	476	77	7	16	1,317		
Lemon Sole	0	1	0	11	29	302	245	94	48	6	737	0	2	0	31	48	603	574	253	126	14	1,651		
Ling	0	2	0	6	37	783	2,057	630	2	179	3,696	1	2	0	7	42	872	2,503	776	2	240	4,444		
Megrim	0	0	0	73	140	1,488	810	621	4	38	3,176	0	1	0	192	399	4,032	1,977	1,605	13	74	8,293		
Monks	0	2	3	73	316	3,771	4,173	2,613	33	294	11,279	0	5	7	220	968	11,906	13,770	8,505	88	885	36,354		
Plaice	0	15	2	13	36	297	685	866	3,084	4	5,003	0	16	1	10	22	207	664	1,021	3,885	4	5,829		
Red mullet	0	0	0	1	2	7	36	70	70	0	186	0	0	0	3	4	24	183	452	395	0	1,061		
Saithe	4	12	0	6	79	2,179	7,838	1,568	0	1,196	12,883	3	7	0	3	53	1,438	5,409	1,258	0	834	9,007		
Turbot	0	1	0	1	3	15	23	40	64	0	148	0	3	2	4	20	107	176	292	521	1	1,126		
Whiting	0	4	1	128	300	3,515	3,670	257	17	78	7,969	0	2	0	100	230	3,195	4,030	286	11	82	7,937		
Witches	0	0	0	15	92	422	151	82	63	9	834	0	0	0	16	107	517	198	118	163	9	1,128		
Other demersal	7	32	5	47	130	826	2,309	994	663	4,088	9,099	18	64	6	80	135	1,094	3,096	1,489	1,287	1,011	8,280		
Total demersal	16	88	20	704	1,937	28,034	46,549	14,767	4,286	7,065	103,466	31	127	32	916	2,761	39,768	65,123	27,818	6,932	5,292	148,801		
Herring	0	8	0	2	356	0	1	1	0	45,874	46,241	0	1	0	2	90	0	1	0	0	0	14,516		
Mackerel	248	169	2	1	1	5	6	9	1,967	149,350	151,757	193	145	2	1	1	3	3	9	1,744	132,642	134,742		
Other pelagic	0	0	0	0	70	16	4	220	260	6,413	6,982	0	0	0	0	14	86	0	393	10	1,027	1,530		
Total pelagic	248	177	2	2	427	21	10	230	2,226	201,638	204,980	193	147	2	2	104	89	4	402	1,754	148,091	150,788		
Edible crabs	619	2,503	1,438	570	1,918	1,042	0	14	5	101	8,210	651	2,676	1,537	587	2,208	1,229	0	9	6	115	9,018		
Lobsters	401	423	170	52	33	2	0	0	0	20	1,102	4,066	4,447	1,732	550	348	18	0	0	2	215	11,377		
Nephrops	288	2,545	2,219	3,644	7,233	12,456	1,849	34	9	151	30,427	2,269	11,572	7,883	7,854	15,302	27,085	4,323	315	32	668	77,302		
Queen scallops	0	1	3	0	330	4,992	2	3	0	3	5,334	0	1	5	0	133	2,057	4	1	0	1	2,202		
Razor clam	106	264	136	1	189	0	0	0	0	10	706	188	709	325	2	500	0	0	0	0	26	1,751		
Scallops	170	337	713	886	2,651	4,357	2,847	4,646	0	720	17,328	437	1,156	1,800	1,596	4,870	7,777	4,320	6,748	0	1,233	29,936		
Squid	1	383	31	351	293	409	422	124	33	118	2,166	4	677	69	803	684	872	898	337	124	196	4,664		
Velvet crabs	1,132	963	599	38	8	0	0	0	0	38	2,778	2,312	2,184	1,442	107	25	0	0	0	0	81	6,152		
Other shellfish	242	285	156	627	1	6	4	52	14	5	1,392	269	268	105	209	2	11	8	80	9	11	972		
Total shellfish	2,957	7,705	5,466	6,169	12,657	23,264	5,125	4,872	61	1,166	69,442	10,196	23,690	14,897	11,708	24,073	39,048	9,554	7,490	173	2,546	143,374		
Total landings	3,221	7,970	5,486	6,875	15,021	51,319	51,684	19,869	6,572	209,869	377,889	10,419	23,963	14,929	12,627	26,938	78,905	74,681	35,709	8,859	155,930	442,963		

(1) Total value over £1.0m

Chart 11. Value of landings at 2008 prices by Scottish based vessels by species type, 2000 to 2009

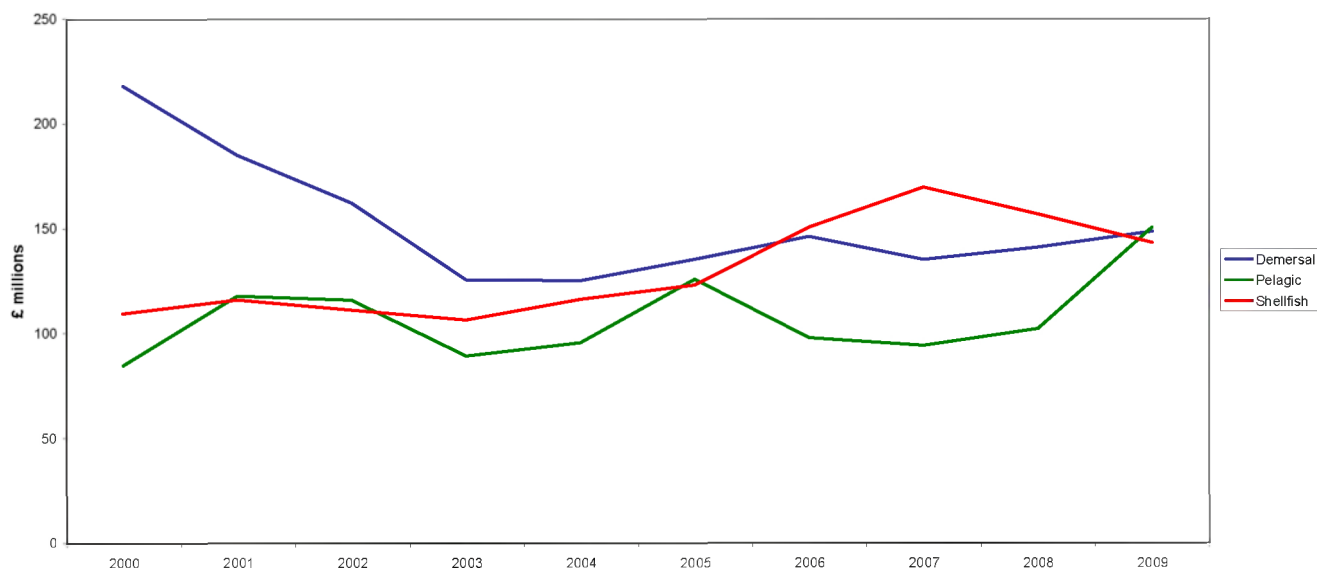


Table 31. Liveweight and value of landings by Scottish based vessels, by main (1) species and gear 2009

	Liveweight (tonnes)								Value (£'000)							
	Demersal trawl (2)	Demersal seine	Demersal twin trawl	Lines	Gill nets	Beam trawl	Other demersal	Demersal total	Demersal trawl (2)	Demersal seine	Demersal twin trawl	Lines	Gill nets	Beam trawl	Other demersal	Demersal total
Bream - Ray's	16	1	0	557	0	-	-	575	16	2	0	912	0	-	-	930
Cod	7,368	1,158	978	10	1	26	-	9,541	13,315	2,072	1,776	17	2	45	-	17,228
Greenland halibut	316	0	0	-	0	-	-	317	574	-	1	-	0	-	-	575
Haddock	24,544	5,654	1,584	1	0	3	-	31,786	25,772	4,358	1,402	2	0	4	-	31,538
Hake	2,181	307	114	4,026	255	1	-	6,884	2,751	319	100	9,909	495	1	-	13,575
Halibut	175	11	31	0	0	0	-	218	1,049	65	195	0	1	0	-	1,311
Lemon Sole	583	50	83	0	0	18	-	733	1,317	107	179	0	1	39	-	1,643
Ling	2,248	43	541	791	74	0	-	3,696	2,600	45	625	1,066	107	0	-	4,444
Megrim	2,433	246	491	0	5	0	-	3,175	6,270	733	1,274	0	13	1	-	8,292
Monks	6,849	141	2,211	1	2,041	1	-	11,243	22,211	424	7,071	2	6,565	4	-	36,276
Plaice	2,170	102	1,071	1	9	1,640	-	4,993	2,469	80	1,258	1	11	2,001	-	5,820
Pollack	483	10	30	8	0	0	-	530	892	18	60	17	0	0	-	987
Red Mullet	13	167	2	-	0	4	-	186	54	987	4	-	0	16	-	1,061
Saithe	11,564	269	1,030	13	-	0	-	12,875	8,160	193	640	8	-	0	-	9,001
Sole	4	0	4	-	7	98	-	112	34	0	32	-	33	854	-	954
Turbot	77	3	26	0	0	35	-	141	577	21	180	0	3	304	-	1,085
Whiting	5,568	1,583	783	0	2	3	-	7,939	5,527	1,785	606	0	1	2	-	7,922
Witches	656	17	160	-	-	-	-	833	907	24	197	0	-	-	-	1,128
Other demersal	6,135	427	378	410	42	136	-	7,528	3,333	696	390	115	54	167	-	4,756
Total demersal	73,383	10,188	9,515	5,818	2,437	1,965	-	103,305	97,829	11,929	15,989	12,050	7,289	3,437	-	148,523
Other species	9,415	115	5,359	808	17	21	13	15,748	9,418	357	11,732	712	30	26	40	22,315

	Liveweight (tonnes)			Value (£'000)		
	Pelagic purse seine	Pelagic trawl	Pelagic total	Pelagic purse seine	Pelagic trawl	Pelagic total
Herring	-	46,196	46,196	-	14,503	14,503
Mackerel	-	145,486	145,486	-	129,362	129,362
Sprats	-	1,916	1,916	-	526	526
Other pelagic	-	3,537	3,537	-	513	513
Total pelagic	-	197,135	197,135	-	144,904	144,904
Other species	-	38	38	-	51	51

	Liveweight (tonnes)						Value (£'000)					
	Creel fishing	Nephrop trawl (2)	Dredging	Hand shellfishing	Other methods	Shellfish total	Creel fishing	Nephrop trawl (2)	Dredging	Hand shellfishing	Other methods	Shellfish total
Edible crabs	8,179	0	4	2	-	8,184	8,990	0	4	3	-	8,997
Velvet crabs	2,774	0	0	0	-	2,774	6,143	0	1	1	-	6,144
Lobsters	1,096	0	2	0	-	1,099	11,326	0	19	2	-	11,347
Nephrops	1,777	23,424	0	0	-	25,201	14,908	50,959	1	0	-	65,868
Queen Scallops	0	0	4,894	-	-	4,894	0	0	2,025	0	-	2,025
Razor Clam	24	-	238	442	-	704	66	0	521	1,160	-	1,747
Scallops	34	-	16,898	380	-	17,312	121	0	28,797	972	-	29,889
Squid	4	2	2	1	-	8	5	3	7	2	-	17
Other shellfish	656	0	585	67	-	1,308	578	0	189	90	-	857
Total shellfish	14,544	23,426	22,623	892	-	61,484	42,136	50,959	31,565	2,229	-	126,888
Other species	61	65	52	0	-	178	64	59	158	0	-	282

(1) Total value over £0.5m

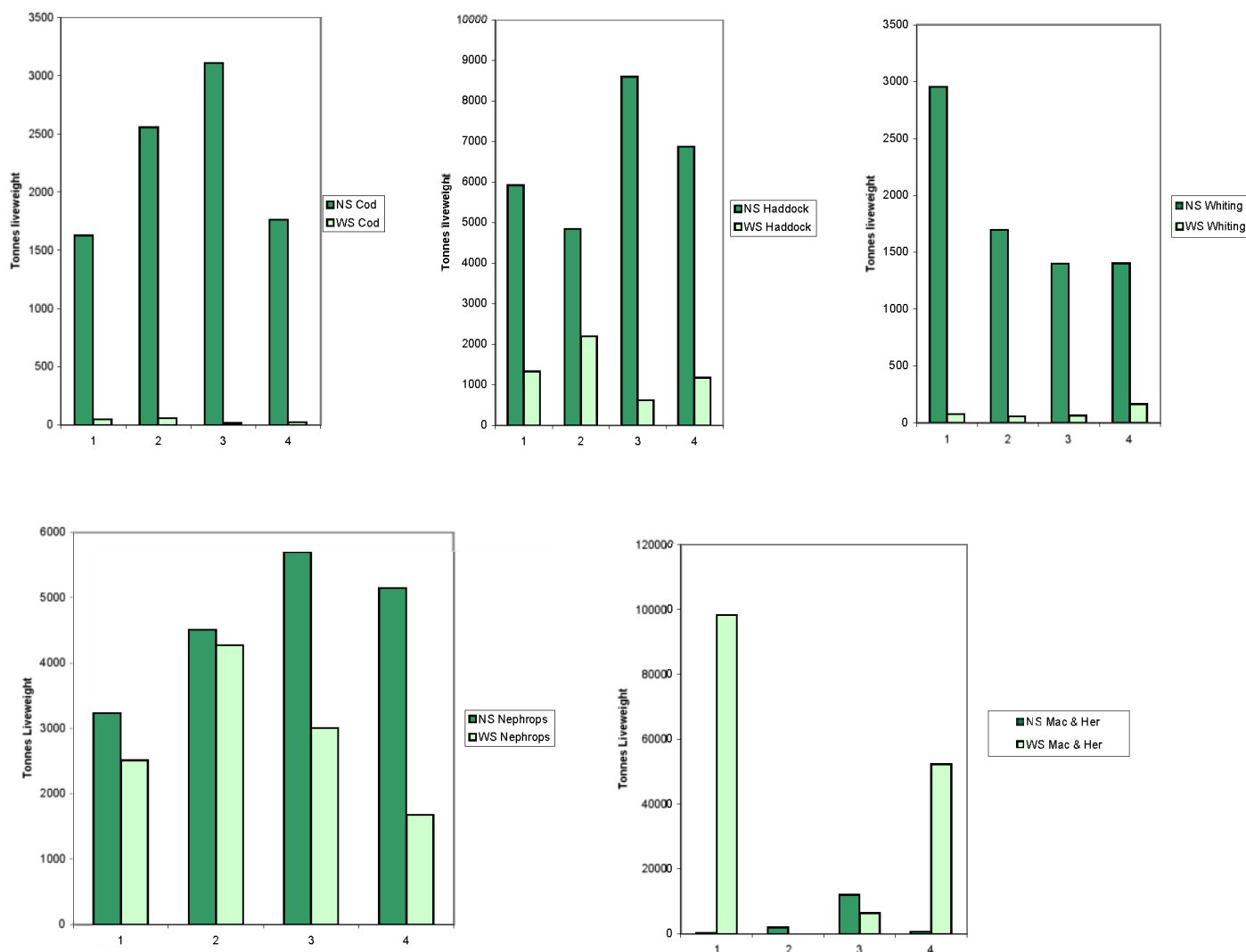
(2) Bottom trawl gears catching demersal species have been included as demersal trawl; those catching nephrops have been included as nephrop trawl.

Table 32. Key commercial stocks landed by Scottish vessels 2005 to 2009

	Tonnes					Value (£'000) (1)				
	2005	2006	2007	2008	2009	2005	2006	2007	2008	2009
Atlanto Scandian Herring	-	11,973	13,244	19,737	25,477	-	5,217	5,730	2,838	7,658
North Sea cod	6,625	6,723	6,512	6,909	9,051	11,675	12,833	13,567	14,729	16,288
North Sea haddock	41,315	31,547	24,919	25,346	26,240	33,255	36,790	31,699	27,913	24,881
North Sea herring	74,510	47,920	32,624	15,690	14,004	15,417	11,318	6,202	4,550	4,677
North Sea monkfish	7,569	7,257	8,238	8,601	7,567	18,666	19,130	20,314	23,429	23,554
North Sea nephrops	15,344	16,894	17,923	17,034	18,575	38,641	49,845	55,908	46,912	38,817
West of Scotland cod	329	334	286	270	152	606	646	560	553	278
West of Scotland haddock	3,119	5,339	4,222	3,458	5,316	2,841	6,441	5,466	4,241	6,366
West of Scotland herring	14,830	13,148	12,027	10,141	6,750	2,968	3,087	2,256	2,852	2,177
West of Scotland mackerel	131,382	78,219	107,066	105,186	150,303	88,552	63,620	69,996	82,433	133,604
West of Scotland monkfish	1,493	1,397	1,547	1,707	2,005	4,396	4,086	4,183	4,803	7,059
West of Scotland nephrops	9,493	12,504	14,139	13,201	11,462	28,492	38,982	44,924	43,278	36,961
Edible crabs	6,581	8,469	10,089	7,734	8,210	7,031	10,280	12,022	8,698	9,018
Lobsters	409	707	878	1,020	1,102	4,272	7,681	9,674	10,852	11,377
Velvet crabs	1,802	2,594	2,944	2,714	2,778	2,994	4,758	5,845	5,832	6,152
Scallops	12,458	10,970	12,371	14,548	17,328	20,172	20,888	25,606	28,485	29,936

(1) When the Register of Buyers and Sellers (RBS) was introduced in September 2005, Sales Notes were not initially required for sales of shellfish and information on the value of such landings is consequently missing. The value has therefore been estimated for a number of landings, mostly shellfish, relating to voyages starting on or after 1 September 2005.

Chart 12. Liveweight landings by Scottish based vessels, by quarter, 2009



NS: North Sea  
WS: West of Scotland

## Annex 1 - Port districts and ports in Scotland



### Aberdeen

Aberdeen  
Arbroath  
Catterline  
Gourdoun  
Johnshaven  
Montrose  
Stonehaven

### Ayr

Annan  
Ayr  
Ballantrae  
Cumbraes  
Drummore  
Dunure  
Girvan  
Kirkcudbright  
Largs & Greenock  
Maidens  
Portpatrick  
Stranraer  
Troon & Saltcoats  
Whithorn

### Buckie

Buckie  
Burghead  
Findochty  
Hopeman  
Lossiemouth  
Portknockie

### Campbeltown

Ardrishaig  
Arran  
Bruichladdich  
Bute  
Campbeltown  
Carradale  
Colonsay  
Crinan  
Gigha  
Islay  
Jura  
Port Askaig  
Port Ellen  
Tarbert  
Tayinloan  
Tayvallich  
West Loch Tarbert

### Eymouth

Burnmouth  
Cove  
Dunbar  
Eyemouth  
Granton  
North Berwick  
Port Seton  
St Abbs

### Fraserburgh

Fraserburgh  
Gardenstown  
Macduff  
Pennan  
Portsoy  
Rosehearty  
Sandhaven & Pitullie  
Whitehills

### Kinlochbervie

Eriboll  
Kinlochbervie  
Scourie

### Lochinver

Culkein/Drumbeg  
Kylesku  
Lochinver

### Mallaig

Ardnamurchan  
Arisaig  
Corpach  
Glenug  
Mallaig  
Salen

### Oban

Coll  
Fort William  
Loch Buie (Mull)  
Loch Scridain (Mull)  
Luing  
Oban  
Tiree  
Tobermory (Mull)

### Orkney

Hoy  
Kirkwall  
Rousay  
S Ronaldsay  
Sandy  
Stromness  
Stronsay  
Tingwall  
Westray

### Peterhead

Boddam  
Peterhead  
Port Errol

### Pittenweem

Anstruther  
Burntisland  
Crail  
Methil & Leven  
Pittenweem  
St Andrews  
St Monans

### Portree

Bracadale  
Broadford  
Dunvegan  
Kyle  
Portree  
Sleat  
Snizort  
Strathaird  
Torridon

### Shetland

Central Mainland  
Lerwick  
Northmavine  
S Mainland & Fair Isle  
Scalloway  
Skerries  
West Mainland  
Whalsay  
Yell, Fetlar & Unst

### Stornoway

Barra  
Benbecula  
Bernera (Lewis)  
Bernera (N Uist)  
Grimsay  
Lochs  
North Harris  
North Uist  
Portnaguran & Ness  
Scalpay  
South Harris  
South Uist & Eriskay  
Stornoway

### Ullapool

Achiltibuie  
Aultbea  
Gairloch  
Ullapool

### Scrabster

Avoch  
Brora  
Dunbeath  
Helmsdale  
Invergordon  
Inverness  
John O'Groats  
Keiss  
Lybster  
Portmahomack  
Portskerra  
Scrabster  
Wick

[illegible]

## A NATIONAL STATISTICS PUBLICATION FOR SCOTLAND

Official and National Statistics are produced to high professional standards set out in the Code of Practice for Official Statistics at <http://www.statisticsauthority.gov.uk/assessment/code-of-practice/code-of-practice-for-official-statistics.pdf>. Both undergo regular quality assurance reviews to ensure that they meet customer needs and are produced free from any political interference.

Statistics assessed, or subject to assessment, by the UK Statistics Authority carry the National Statistics label, a stamp of assurance that the statistics have been produced and explained to high standards and that they serve the public good.

Further information about Official and National Statistics can be found on the UK Statistics Authority website at [www.statisticsauthority.gov.uk](http://www.statisticsauthority.gov.uk)

## SCOTTISH GOVERNMENT STATISTICIAN GROUP

### Our Aim

To provide relevant and reliable information, analysis and advice that meet the needs of government, business and the people of Scotland.

For more information on the Statistician Group, please see the Scottish Government website at [www.scotland.gov.uk/statistics](http://www.scotland.gov.uk/statistics)

### Correspondence and enquiries

Enquiries on this publication should be addressed to:

Patrick McDonald  
Marine Scotland Science  
Marine Scotland  
1-B South, Victoria Quay  
Edinburgh, EH6 6QQ  
Telephone: 0131 244 6441  
Fax: 0131 244 6474  
e-mail: [fisheriesstatistics@scotland.gsi.gov.uk](mailto:fisheriesstatistics@scotland.gsi.gov.uk)

General enquiries on Scottish Government statistics can be addressed to:

Office of the Chief Statistician  
Scottish Government  
1N.04, St Andrews House  
EDINBURGH EH1 3DG  
Telephone: (0131) 244 0442  
e-mail: [statistics.enquiries@scotland.gsi.gov.uk](mailto:statistics.enquiries@scotland.gsi.gov.uk)

Further contact details, e-mail addresses and details of previous and forthcoming publications can be found on the Scottish Government Website at [www.scotland.gov.uk/statistics](http://www.scotland.gov.uk/statistics)

### Complaints and suggestions

If you are not satisfied with our service, please write to the Chief Statistician, Mr Rob Wishart, 1N.04, St Andrews House, Edinburgh, EH1 3DG, Telephone: (0131) 244 0302, e-mail [rob.wishart@scotland.gsi.gov.uk](mailto:rob.wishart@scotland.gsi.gov.uk). We also welcome any comments or suggestions that would help us to improve our standards of service.

### ScotStat

If you would like to be consulted about new or existing statistical collections or receive notification of forthcoming statistical publications, please register your interest on the Scottish Government ScotStat website at [www.scotland.gov.uk/scotstat](http://www.scotland.gov.uk/scotstat)

### Crown Copyright

Brief extracts from the Crown Copyright material in this publication may be reproduced provided the source is fully acknowledged.

ISBN 978-0-7559-9530-1

APS Group Scotland  
DPPAS10499 (08/10)



© Crown copyright 2010

ISBN: 978-0-7559-9530-1

Further copies are available from  
Patrick McDonald  
Marine Analytical Unit  
Marine Scotland Science  
Marine Scotland  
Area 1B South, Victoria Quay  
Edinburgh EH6 6QQ

Produced for the Scottish Government by APS Group Scotland

Published by the Scottish Government, September 2010

Fish photograph on cover courtesy of:  
Tom McInnes, FRS Marine Laboratory

APS Group Scotland  
DPPAS10499 (09/10)

ISBN: 978-0-7559-9530-1



9 780755 995301