



DEPARTMENT OF AGRICULTURE AND FISHERIES
FOR SCOTLAND

Scottish Sea Fisheries Statistical Tables 1965

EDINBURGH: HER MAJESTY'S STATIONERY OFFICE

PRICE 8s. 6d. NET

DEPARTMENT OF AGRICULTURE AND FISHERIES
FOR SCOTLAND

Scottish Sea Fisheries
Statistical Tables
1965

EDINBURGH: HER MAJESTY'S STATIONERY OFFICE

1966

FOREWORD

Fish Landed. The total quantity of wet fish landed in Scotland by British vessels during the year was 7,351,425 cwt. valued at £17,507,529 compared with 6,236,492 cwt. valued at £15,962,410 in 1964. The quantity of shell fish landed was 192,156 cwt. valued at £1,656,539 compared with 215,932 cwt. valued at £1,589,141 in 1964. In addition 124,827 cwt. of wet fish valued at £344,749 and 48 cwt. of shell fish valued at £225 were landed by Danish, Faroese, East and West German, Icelandic, Irish Republican, Netherlands, Norwegian and Swedish fishing vessels as against 171,429 cwt. of wet fish and 6 cwt. of shell fish valued at £559,193 and £44 respectively in 1964, making a grand total of 7,476,252 cwt. of wet fish valued at £17,852,278 (1964, 6,407,921 cwt. valued at £16,521,603) and 215,938 cwt. of shell fish valued at £1,656,784 (1964, 215,938 cwt. valued at £1,589,185). Herring landed by British vessels amounted to 1,627,479 cwt. valued at £2,276,803 as against 1,644,620 cwt. and £2,099,936 in 1964, and demersal fish landed by British vessels amounted to 4,764,612 cwt. valued at £14,808,625 compared with 4,208,500 cwt. valued at £13,830,718 in the previous year. Foreign fishing vessels landed 61,400 cwt. of herring compared with 65,965 cwt. in 1964 and 54,764 cwt. of demersal fish compared with 97,476 cwt. in 1964.

Fish Processed. The quantity of herring kippered, redded or canned was 183,314 crans, valued after process at £2,771,636 compared with 219,226 crans valued at £3,123,052 in 1964. In addition 23,018 barrels of herring valued at £171,408 were pickle-cured as against 17,791 barrels and £114,725 in 1964. Of other kinds of fish, the quantity processed, chiefly by smoking or canning, amounted after process to 267,562 cwt. valued at £2,582,536 as against 208,607 cwt. and £2,109,440 in 1964.

Fishing Fleet. The Scottish fishing fleet at 31st December 1965 comprised 5 steam trawlers, 120 motor trawlers over 80 ft., 2,769 other motor vessels and 43 sail vessels, a total of 2,937 vessels compared with 2,947 vessels in 1964.

Fishermen. The total number of Scottish fishermen at 31st December 1965 was 10,145 of whom 2,088 (including 875 crofter fishermen) were only partially employed in fishing. The number of fishermen at 31st December 1964 was 10,249 of whom 2,068 (including 916 crofter fishermen) were only partially employed in fishing.

United Kingdom Statistics. For convenient reference United Kingdom statistics are shown in Table I. Statistics in all other Tables relate solely to Scotland.

May 1966

St. Andrew's House, Edinburgh, I.

EXPLANATORY NOTES

Fishing Vessels

Unless otherwise stated, fishing vessels are shown in registered lengths.

Shrimps and Cockles

From 1st January 1962 the landings of shrimps and cockles have been recorded separately, instead of being included with "other shell fish" as previously.

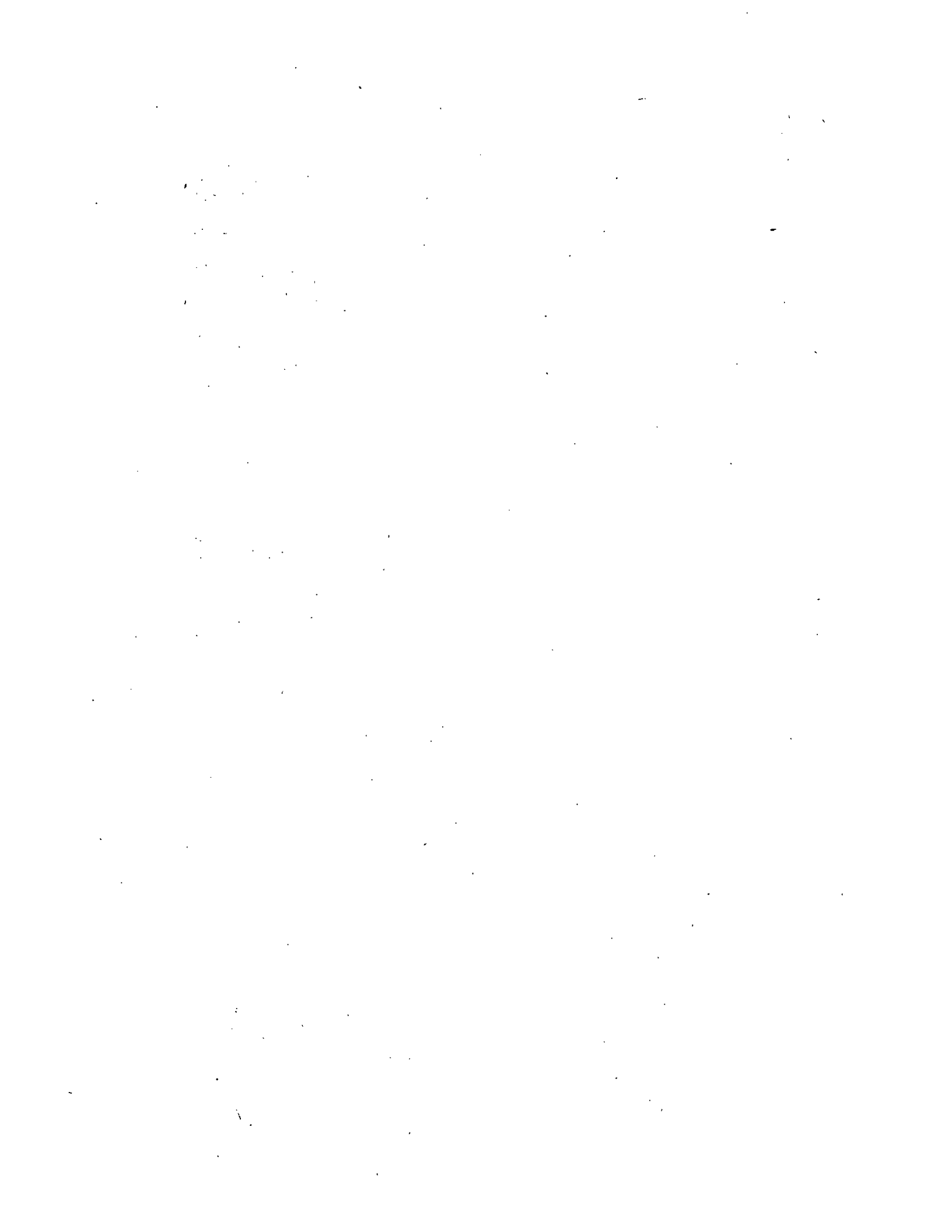
Classification of Squids

In the tables for 1954 and earlier years, squids were classified as demersal fish. It was decided in view of the zoological classification of squids as members of the mollusc group that it was more appropriate for statistical purposes to classify them as shell fish. Effect has been given to that decision in the tables from 1955.

Symbols used in the Tables

The following symbols are used in the tables:—

- .. = not available.
- = nil or less than half of one unit.



CONTENTS

<i>Table</i>	Fish landed in the United Kingdom	<i>Page</i>
1.	United Kingdom: Quantity and value of principal species landed by British and foreign vessels (1938, 1946, 1961-1965)	6
Fish landed in Scotland		
2.	British and foreign vessels: Quantity and value of fish landed	8
3.	British vessels: Quantity of each species landed (1913, 1938, 1958-1965)	9
4.	British vessels: Value of each species landed (1913, 1938, 1958-1965)	10
5.	British vessels: Average value of each species landed (1913, 1938, 1958-1965)	11
6.	British vessels: Quantity and value of each species landed in each district	12
7.	British trawlers (All trawl methods other than for Norway lobsters): Quantity and value of each species landed in each district	18
8.	British vessels using light trawl: Quantity and value of each species landed in each district	20
9.	British seine net vessels: Quantity and value of each species landed in each district	21
10.	British great line vessels: Quantity and value of each species landed in each district	24
11.	British vessels using small and hand lines: Quantity and value of each species landed in each district.	24
12.	British drifters: Quantity and value of each species landed in each district.	26
13.	British ringers: Quantity and value of each species landed in each district	27
14.	British vessels trawling for Norway lobsters: Quantity and value of each species landed in each district	28
15.	British vessels using white fish nets other than trawl and seine: Quantity and value of each species landed in each district	29
16.	British vessels: Landings according to methods of fishing (1938, 1954-1965)	30
17.	Herring fishing: Seasonal landings	31
18.	British vessels: Quantity of each species landed from each fishing region, by method of capture; showing total values and fishing effort involved	32
19.	Foreign vessels: Quantity of each species landed from each fishing region	38
20.	Foreign vessels: Quantity and value of fish landed by each nationality	40
Treatment of catch		
21.	Fish processed: Quantity and value of white fish processed according to method of process	41
22.	Fish processed: Quantity and value of herring processed in each district according to method of process	42
23.	Fish processed: Quantity of herring processed (1913-1965)	44
Vessels and fishermen		
24.	Fishing vessels (1963-1965)	45
25.	Fishing vessels in each district	45
26.	Number of vessels under 80 feet categorized by method of fishing mainly engaged in during 1963, 1964 and 1965	46
27.	Fishermen employed	46
28.	Herring fishing: Greatest number of vessels and persons employed in each district in any week	47
Creek return		
29.	Number of vessels and fishermen and quantity and value of fish landed	48

TABLE 1

United Kingdom: Quantity and value of principal species landed by British and foreign vessels (1938, 1946, 1961-1965)

	Cod		Dogfish		Haddock		Hake		Halibut		Lemon Soles		Plaice		Redfish		Saithe (Coalfish)	
	000 cwt.	£000	000 cwt.	£000	000 cwt.	£000	000 cwt.	£000	000 cwt.	£000	000 cwt.	£000	000 cwt.	£000	000 cwt.	£000	000 cwt.	£000
England and Wales																		
1938	6,446	4,239	164	102	1,833	1,696	640	1,184	62	248	84	261	462	1,889	74	22	555	146
1946	4,839	9,799	111	136	1,594	4,045	1,239	3,295	27	204	14	67	1,066	5,128	37	35	255	339
1961	4,962	16,686	105	223	1,616	6,249	143	1,511	39	504	53	433	581	4,009	302	430	472	1,106
1962	5,518	16,514	84	207	1,644	6,046	139	1,365	34	460	51	422	595	3,927	335	468	449	999
1963	5,409	18,269	74	181	1,208	5,268	124	1,348	34	455	52	419	683	4,172	336	491	476	927
1964	4,978	19,222	85	226	1,213	5,385	105	1,320	33	441	60	581	697	4,698	334	538	645	1,183
1965	5,296	21,110	96	260	1,220	5,397	82	1,077	42	550	60	581	660	4,926	306	508	731	1,364
Scotland																		
1938	548	507	1,025	1,035	34	60	33	119	68	243	70	175	66	18
1946	797	1,567	1,279	2,877	42	110	42	306	37	177	123	552	81	91
1961	778	2,880	80	106	1,010	3,712	59	380	33	433	66	540	113	701	8	12	97	159
1962	781	2,663	50	72	1,061	3,627	90	511	33	426	66	570	114	676	8	11	114	200
1963	913	3,275	59	84	1,201	4,135	76	593	26	353	59	571	111	630	6	10	144	199
1964	911	3,841	67	145	1,739	4,833	51	557	24	368	52	547	122	680	10	14	178	247
1965	929	3,914	74	127	2,097	5,451	47	486	23	364	57	580	121	763	12	17	205	292
Northern Ireland																		
1938	2	2	2	2
1946	5	12
1961	5	13
1962	5	11
1963	7	17
1964	12	30
1965	15	39
United Kingdom																		
1938	6,996	4,748	164	102	2,860	2,733	674	1,244	95	367	152	504	537	2,073	74	22	623	165
1946	5,641	11,378	111	136	2,873	6,922	1,281	3,405	69	510	51	244	1,193	5,695	37	55	338	434
1961	5,745	19,589	185	329	2,626	9,962	205	1,897	73	937	119	973	695	4,714	310	442	571	1,268
1962	6,304	19,188	137	279	2,705	9,673	232	1,885	67	886	117	1,012	710	4,609	343	479	566	1,203
1963	6,329	21,561	134	265	2,409	9,404	201	1,945	60	808	111	990	796	4,812	342	501	622	1,129
1964	5,902	23,093	177	372	2,953	10,220	157	1,881	57	809	106	1,038	823	5,392	344	552	825	1,434
1965	6,240	25,063	175	388	3,318	10,851	131	1,567	65	914	117	1,161	786	5,703	318	525	939	1,660
Foreign Landings																		
1938	165	101	1	..	71	73	11	16	5	17	8	26	65	199	2	1	14	5
1946	1,070	2,323	2	..	373	890	25	66	13	92	4	21	468	2,180	57	124	110	153
1961	606	2,071	5	8	253	1,009	2	12	8	87	15	91	59	409	44	81	47	124
1962	527	1,536	3	6	846	846	2	8	6	64	11	64	43	280	44	64	34	71
1963	435	1,441	4	9	193	928	1	8	4	61	8	78	42	241	28	46	29	57
1964	459	1,749	4	9	200	909	..	8	5	62	9	78	63	362	36	62	28	45
1965	390	1,545	3	6	147	665	..	1	4	53	9	79	58	373	25	45	16	31
Total Landings																		
1938	7,161	4,849	165	102	2,931	2,806	685	1,260	100	384	160	530	602	2,272	76	23	637	170
1946	6,711	13,701	113	138	3,246	7,812	1,306	3,471	82	602	55	265	1,661	7,875	94	179	448	587
1961	6,351	21,660	190	337	2,879	10,971	207	1,909	81	1,024	134	1,064	1,754	5,133	364	523	618	1,374
1962	6,831	20,724	140	285	2,919	10,519	234	1,893	73	966	178	1,880	753	4,889	387	543	600	1,374
1963	6,764	23,002	138	271	2,602	10,352	202	1,953	64	869	119	1,054	838	5,053	370	547	681	1,166
1964	6,361	24,842	182	381	3,153	11,129	157	1,885	62	871	115	1,116	886	5,754	380	614	853	1,479
1965	6,630	26,608	178	394	3,465	11,516	131	1,568	69	967	126	1,240	844	6,076	343	570	955	1,691

.. Not available (Included with Other Demersal)

TABLE I—continued

	Skates and Rays		Soles		Whiting		Other Demersal		Total Demersal Fish		Herring		Other Pelagic		Total Pelagic Fish		Total Wet Fish		Shell-fish Value		Total Value all Fish			
	000 cwt.	£000	000 cwt.	£000	000 cwt.	£000	000 cwt.	£000	000 cwt.	£000	000 cwt.	£000	000 cwt.	£000	000 cwt.	£000	000 cwt.	£000	000 cwt.	£000	000 cwt.	£000	000 cwt.	£000
England and Wales																								
1938	344	413	62	409	269	203	1,650	489	11,301	2,587	804	301	128	2,888	932	15,533	12,233	409	12,642	15,533	12,233	409	12,642	
1946	228	428	322	791	404	404	1,042	2,047	26,738	1,799	1,800	90	99	1,889	1,901	12,657	28,639	928	29,567	12,657	28,639	928	29,567	
1961	179	713	45	776	153	374	790	1,814	10,440	3,772	505	189	219	541	801	9,981	35,642	1,135	36,777	9,981	35,642	1,135	36,777	
1962	171	727	47	820	170	384	782	1,734	34,073	2,722	641	194	239	466	880	10,485	34,953	1,068	36,021	10,485	34,953	1,068	36,021	
1963	176	753	74	900	161	336	747	1,898	35,217	481	761	202	254	683	1,015	10,237	36,232	1,029	37,261	10,237	36,232	1,029	37,261	
1964	157	712	26	704	141	301	775	1,901	37,122	352	732	360	306	712	1,038	9,955	38,160	1,220	39,380	9,955	38,160	1,220	39,380	
1965	148	728	24	664	142	267	799	2,013	39,445	301	621	258	263	559	884	10,165	40,329	1,198	41,527	10,165	40,329	1,198	41,527	
Scotland																								
1938	84	71	—	—	321	272	255	242	2,504	2,801	1,063	76	21	2,877	1,084	5,381	3,826	80	3,906	5,381	3,826	80	3,906	
1946	64	109	—	—	436	790	189	535	3,090	2,186	2,373	73	79	2,259	2,452	5,349	9,566	423	9,989	5,349	9,566	423	9,989	
1961	115	330	—	—	704	1,662	300	780	11,705	1,360	1,702	87	86	1,447	1,788	13,493	14,648	1,155	14,803	13,493	14,648	1,155	14,803	
1962	98	302	—	—	687	1,725	286	728	3,405	1,487	2,091	194	145	1,681	2,236	5,086	13,719	1,319	15,038	5,086	13,719	1,319	15,038	
1963	92	306	—	—	704	1,705	274	722	3,648	1,567	1,931	190	190	2,213	2,121	14,704	15,086	1,364	16,450	14,704	15,086	1,364	16,450	
1964	108	367	—	—	623	1,407	303	825	4,208	1,579	1,959	449	173	2,038	2,132	6,236	15,963	1,589	17,552	6,236	15,963	1,589	17,552	
1965	101	381	—	—	794	1,469	304	964	4,764	1,628	2,277	959	422	2,587	2,699	7,351	17,507	1,657	19,164	7,351	17,507	1,657	19,164	
Northern Ireland																								
1938	2	—	—	—	17	12	—	—	30	35	12	—	—	—	—	65	40	5	45	35	12	—	—	
1946	1	—	—	—	130	208	3	7	145	65	62	—	—	—	—	210	309	18	327	65	62	—	—	
1961	1	—	—	—	57	54	3	2	72	50	39	—	—	—	—	122	123	86	209	50	39	—	—	
1962	—	—	—	—	95	63	2	2	112	96	45	—	—	—	—	147	142	74	216	95	63	—	—	
1963	—	—	—	—	50	44	4	3	68	83	41	—	—	—	—	117	125	129	254	50	44	—	—	
1964	—	—	—	—	53	53	7	7	87	116	32	—	—	—	—	150	163	136	299	53	53	—	—	
1965	2	3	—	—	37	32	5	6	75	106	32	—	—	—	—	168	166	98	264	37	32	—	—	
United Kingdom																								
1938	430	485	62	409	607	487	1,905	732	14,071	5,423	1,879	377	149	5,800	2,028	20,979	16,099	494	16,593	20,979	16,099	494	16,593	
1946	293	538	94	791	788	1,402	1,234	2,589	34,099	4,050	4,237	163	178	4,213	4,415	18,216	38,514	1,369	39,883	18,216	38,514	1,369	39,883	
1961	295	1,044	45	776	914	2,090	1,093	2,596	46,617	1,782	2,336	256	305	2,038	2,641	49,718	49,258	2,376	51,634	49,718	49,258	2,376	51,634	
1962	269	1,030	47	820	969	2,172	1,070	2,464	45,700	1,793	2,777	389	385	2,182	3,162	15,718	48,862	2,461	51,323	15,718	48,862	2,461	51,323	
1963	269	1,060	74	900	898	2,085	1,025	2,423	47,883	2,095	2,733	850	445	2,945	3,178	16,215	51,061	2,522	53,583	16,215	51,061	2,522	53,583	
1964	266	1,080	24	704	817	1,761	1,085	2,733	51,659	1,958	2,723	845	494	2,803	3,217	16,341	54,286	2,945	57,231	16,341	54,286	2,945	57,231	
1965	251	1,112	24	664	973	1,768	1,108	2,983	54,359	1,963	2,930	1,276	713	3,239	3,643	17,684	56,002	2,953	60,955	17,684	56,002	2,953	60,955	
Foreign Landings																								
1938	13	16	1	9	11	11	74	89	563	7	—	—	—	—	—	449	565	—	565	7	—	—	—	—
1946	15	29	5	39	20	20	147	280	6,219	—	—	—	—	—	—	2,301	6,220	—	6,220	15	29	—	—	
1961	25	95	5	78	47	47	85	197	4,309	107	180	19	37	176	217	1,309	4,576	4	4,580	25	95	—	—	
1962	18	69	3	48	57	57	97	182	3,315	23	49	8	24	31	73	1,057	3,388	3	3,391	18	69	—	—	
1963	14	51	2	31	37	37	73	152	1,026	65	110	12	32	77	142	926	3,265	1	3,266	14	51	—	—	
1964	20	85	6	164	29	29	91	186	3,749	91	186	11	35	102	216	1,019	3,965	2	3,967	20	85	—	—	
1965	13	62	5	174	18	18	55	145	3,197	63	105	12	35	75	140	809	3,337	2	3,339	13	62	—	—	
Total Landings																								
1938	443	501	63	418	618	498	1,979	821	14,634	5,430	1,880	378	150	5,808	2,030	21,428	16,664	494	17,158	443	501	63	418	
1946	308	567	99	830	799	1,422	1,381	2,869	40,318	4,050	4,237	164	164	4,214	4,416	20,517	44,734	1,369	46,103	308	567	99	830	
1961	320	1,139	50	854	933	2,137	1,178	2,793	50,926	1,889	2,516	275	342	2,164	2,858	16,223	53,784	2,380	56,164	320	1,139	50	854	
1962	287	1,099	50	868	993	2,229	1,167	2,642	49,015	1,816	2,826	397	409	2,213	3,235	16,775	52,250	2,464	54,714	287	1,099	50	868	
1963	283	1,111	36	931	914	2,172	1,098	2,575	51,006	2,160	2,843	862	477	3,022	3,320	17,141	54,326	2,523	56,849	283	1,111	36	931	
1964	286	1,165	72	829	829	1,790	1,159	2,974	54,818	2,049	2,909	856	524	2,905	3,433	17,360	58,251	2,946	61,197	286	1,165	72	829	
1965	264	1,174	29	838	982	1,786	1,163	3,128	57,556	2,026	3,035	1,288	748	3,314	3,783	18,493	61,339	2,955	64,294	264	1,174	29	838	

TABLE 2
British and foreign vessels: Quantity and value of fish landed

	Direct Landings						Carrier Landings	
	Total		British Vessels		Foreign Vessels		cwt.	£
	cwt.	£	cwt.	£	cwt.	£	cwt.	£
DEMERSAL FISH								
Brill	352	3,292	352	3,290	—	2	—	—
Catfish	12,350	28,597	12,213	28,240	137	357	—	—
Cod	950,471	4,003,220	928,784	3,913,542	21,687	89,678	40	181
Conger eels	3,284	8,932	3,280	8,911	4	21	—	—
Dabs	12,167	41,318	12,163	41,307	4	11	—	—
Dogfish	74,660	128,439	73,612	126,766	1,048	1,673	—	—
Flounders	1,060	1,022	1,060	1,022	—	—	—	—
Gurnards	1,509	1,791	1,498	1,786	11	5	—	—
Haddock	2,116,500	5,528,545	2,097,117	5,451,153	19,383	77,392	1,422	3,770
Hake	47,436	485,907	47,399	485,554	37	353	—	—
Halibut	24,152	377,369	23,305	364,178	847	13,191	16	259
Lemon Sole	58,024	585,336	57,127	580,460	897	4,876	—	—
Ling	41,925	136,393	39,967	130,122	1,958	6,271	2	3
Lythe	6,893	20,866	6,807	20,541	86	325	—	—
Megrims	13,709	62,722	13,686	62,642	23	80	—	—
Monks	62,240	209,514	61,938	208,557	302	957	—	—
Platce	121,787	766,823	121,253	763,514	534	3,309	9	86
Porbeagles	170	888	166	864	4	24	—	—
Redfish	11,597	16,905	11,571	16,872	26	33	—	—
Saithe	206,573	293,506	205,472	291,790	1,101	1,716	1	—
Skate	101,634	382,379	101,163	380,517	471	1,862	—	—
Torsk	29,033	88,026	24,385	76,595	4,648	11,431	—	—
Turbot	10,961	174,565	10,953	174,485	8	80	—	—
Whiting	795,098	1,472,582	793,703	1,469,086	1,395	3,496	—	—
Witches	18,073	83,022	18,010	82,723	63	299	—	—
Livers	74,958	43,051	74,958	43,051	—	—	—	—
Roes	17,072	67,455	16,986	67,352	86	103	—	—
Other	5,688	13,761	5,684	13,705	4	56	—	—
Total	4,819,376	15,026,226	4,764,612	14,808,625	54,764	217,601	1,490	4,299
PELAGIC FISH								
Herring	1,688,879	2,380,770	1,627,479	2,276,803	61,400	103,967	492	1,451
Mackerel	37,247	73,825	28,584	50,644	8,663	23,181	—	—
Sparling	66	355	66	355	—	—	—	—
Sprats	930,684	371,102	930,684	371,102	—	—	—	—
Total	2,656,876	2,826,052	2,586,813	2,698,904	70,063	127,148	492	1,451
WET FISH	7,476,252	17,852,278	7,351,425	17,507,529	124,827	344,749	1,982	5,750
SHELL FISH								
Crabs	35,765	94,855	35,765	94,855	—	—	—	—
Lobsters	12,659	572,035	12,659	572,035	—	—	—	—
Oysters	21	549	21	549	—	—	—	—
Shrimps	2,368	11,825	2,320	11,600	48	225	—	—
Cockles	513	585	513	585	—	—	—	—
Escallops	7,456	44,496	7,456	44,496	—	—	—	—
Mussels	8,975	6,780	8,975	6,780	—	—	—	—
Norway lobsters	103,216	882,818	103,216	882,818	—	—	—	—
Squids	2,002	7,785	2,002	7,785	—	—	—	—
Unclassified	19,229	35,056	19,229	35,056	—	—	—	—
Total	192,204	1,656,784	192,156	1,656,559	48	225	—	—
Total of all fish	7,668,456	19,509,062	7,543,581	19,164,088	124,875	344,974	1,982	5,750

TABLE 3

British vessels: Quantity of each species landed in 1913, 1938 and 1958 to 1965

	1913	1938	1958	1959	1960	1961	1962	1963	1964	1965
DEMERSAL FISH										
Brill	cwt. 199	cwt. 895	cwt. 165	cwt. 163	cwt. 197	cwt. 391	cwt. 400	cwt. 431	cwt. 469	cwt. 352
Catfish	26,270	9,235	7,664	8,024	9,093	11,843	12,331	10,391	12,953	12,213
Cod	867,356	547,749	839,867	844,302	806,940	778,096	780,461	912,830	911,127	928,784
Conger eels	21,933	4,543	4,731	5,237	7,579	9,762	6,364	2,997	3,538	3,280
Dabs	9,883	14,671	17,426	20,417	21,182	22,703	21,349	18,211	14,518	12,163
Dogfish	68,195	63,934	71,933	80,007	49,865	58,924	87,501	73,612
Flounders	8,239	2,731	1,104	1,390	1,609	1,652	734	848	878	1,060
Gurnards	6,592	431	2,080	1,577	2,796	3,874	2,456	3,096	2,407	1,498
Haddock	656,607	1,025,152	1,590,680	1,237,870	1,139,542	1,009,866	1,060,999	1,201,249	1,738,783	2,097,117
Hake	18,854	34,302	37,723	32,092	47,223	59,298	90,229	76,294	51,248	47,399
Halibut	46,206	32,849	35,849	37,214	38,520	34,268	33,349	25,726	23,812	23,305
Lemon Sole	35,867	67,942	53,506	59,307	60,444	66,320	66,443	59,549	51,930	57,127
Ling	209,827	56,968	62,335	51,887	47,370	56,193	44,091	33,314	36,994	39,967
Lyche	5,354	5,833	4,820	4,253	5,931	7,239	7,036	6,807
Megrims	18,180	14,961	22,135	18,638	20,285	19,924	18,036	18,706	17,700	13,686
Monks	24,504	71,900	50,580	40,462	37,014	35,018	33,631	40,457	53,387	61,938
Plaice	43,650	70,386	104,224	120,630	114,273	113,348	113,637	111,310	122,328	121,253
Porbeagles	133	176	189	181	390	342	94	166
Redfish	1,136	1,228	2,553	8,397	8,342	6,317	10,100	11,571
Saithe	321,356	65,931	92,163	96,059	90,316	96,468	114,177	143,912	177,599	205,472
Skate	133,459	84,301	127,886	114,455	116,110	115,375	97,572	91,557	108,231	101,163
Squids*	28	1,061
Torsk	17,254	32,434	29,000	32,775	35,171	29,263	36,517	24,907	23,371	24,385
Turbot	3,783	11,158	14,494	10,731	6,384	7,763	4,407	6,939	7,617	10,953
Whiting	222,628	320,730	793,515	787,369	595,125	703,414	704,443	686,537	622,846	793,703
Witches	28,305	20,477	34,165	25,337	27,300	23,945	21,904	24,097	25,705	18,010
Livers	57,636	58,276	51,314	60,781	63,993	70,807	82,918	74,958
Roes	14,675	13,304	9,723	9,114	11,917	10,040	11,199	16,986
Other	14,272	13,438	6,301	3,922	2,152	3,015	1,643	1,397	2,211	5,684
Total	2,735,252	2,504,245	4,074,722	3,692,609	3,367,157	3,364,532	3,405,611	3,648,424	4,208,500	4,764,612
PELAGIC FISH										
Herring	4,449,321	2,800,610	1,639,091	2,218,111	1,762,058	1,359,663	1,486,646	1,567,114	1,578,655	1,627,479
Mackerel	74,333	63,286	49,779	67,784	49,971	63,643	54,209	46,584	28,453	28,584
Sparling	305	121	6	41	7	47	32	37	111	66
Sprats	8,117	12,300	85,369	85,963	11,630	23,685	139,840	598,981	420,773	930,684
Total	4,532,076	2,876,317	1,774,245	2,371,899	1,823,666	1,447,038	1,680,727	2,212,716	2,027,992	2,586,813
WET FISH										
Total	7,267,328	5,380,562	5,848,967	6,064,508	5,190,823	4,811,570	5,086,338	5,861,140	6,236,492	7,351,425
SHELL FISH										
Crabs	29,650	16,886	41,272	35,888	32,556	38,853	41,694	54,961	50,016	35,765
Lobsters	9,121	10,760	13,858	16,116	17,506	19,498	17,690	15,835	15,602	12,659
Oysters	2,350	123	4	8	2	21
Shrimps*	1,820	2,800	2,400	2,320
Cockles*	893	2,312	4,429	513
Escallops	6,853	2,648	2,847	1,123	1,391	3,320	6,289	11,586	10,690	7,456
Mussels	78,576	40,805	12,510	9,453	12,964	11,594	12,262	17,829	14,881	8,975
Norway lobsters	22,518	42,579	38,763	57,464	68,511	72,970	97,227	103,216
Squids*	17,889	15,945	21,874	15,832	17,758	3,975	1,690	2,002
Other	41,074	21,234	17,319	13,159	16,580	17,547	16,121	17,898	18,995	19,229
Total	167,624	92,456	128,213	134,263	141,634	164,108	183,042	200,174	215,932	192,156
Total of all fish	7,434,952	5,473,018	5,977,180	6,198,771	5,332,457	4,975,678	5,269,380	6,061,314	6,452,424	7,543,581

* See Explanatory Notes

TABLE 4
British vessels: Value of each species landed in 1913, 1938 and 1958 to 1965

	1913	1938	1958	1959	1960	1961	1962	1963	1964	1965
DEMERSAL FISH										
Brill	£ 404	£ 2,551	£ 1,015	£ 986	£ 1,318	£ 2,472	£ 2,844	£ 3,033	£ 3,768	£ 3,290
Catfish	7,523	5,738	13,568	14,924	16,234	20,776	22,834	19,971	28,427	28,240
Cod	461,945	506,998	2,642,335	2,842,540	2,970,484	2,890,401	2,662,647	3,274,596	3,841,086	3,913,542
Conger eels	9,959	3,035	7,866	8,988	12,356	14,518	10,798	6,311	9,165	8,911
Dabs	4,030	14,296	45,130	61,422	56,928	63,923	62,749	56,422	46,789	41,307
Dogfish	79,721	83,530	83,159	106,275	71,698	83,587	144,590	126,766
Flounders	5,525	2,654	1,061	1,499	2,341	1,603	647	701	1,083	1,022
Gurnards	1,050	109	2,358	1,765	2,946	3,821	2,457	3,399	2,920	1,786
Haddock	520,238	1,035,244	4,535,077	4,165,133	3,990,003	3,712,279	3,627,374	4,135,088	4,833,377	5,451,153
Hake	15,837	59,447	295,691	272,392	331,050	379,944	511,428	593,191	556,839	485,554
Halibut	107,621	118,959	390,068	415,651	448,118	432,657	426,424	352,590	367,738	364,178
Lemon sole	82,398	243,111	457,149	526,065	531,587	540,322	590,185	571,050	546,679	580,460
Ling	77,473	33,640	110,692	108,474	96,229	135,311	92,837	77,773	101,300	130,122
Lythe	11,154	14,198	12,851	11,703	15,708	20,185	21,206	20,541
Megrims	22,085	23,551	76,509	68,953	72,388	69,638	64,139	69,516	73,431	62,642
Monks	6,600	27,406	112,138	98,920	112,309	114,411	127,344	138,350	166,598	208,557
Plaice	68,675	174,808	636,982	721,157	701,009	700,764	676,173	630,569	679,751	763,514
Porbeagles	931	1,319	1,134	1,012	1,682	1,317	415	864
Redfish	1,364	1,721	3,134	12,458	10,815	9,707	14,588	16,872
Saithe	52,322	18,307	128,988	140,760	139,286	158,772	200,422	198,886	247,317	291,790
Skate	35,397	71,061	320,636	297,949	333,892	329,889	301,762	306,565	366,657	380,517
Squids*	3	336
Torsk	6,334	15,659	51,889	60,069	69,486	67,503	75,054	58,367	64,741	76,595
Turbot	12,607	34,860	101,504	74,808	56,565	73,521	49,542	72,080	84,629	174,485
Whiting	104,743	272,592	1,682,984	2,014,119	1,599,491	1,662,202	1,724,776	1,705,288	1,406,606	1,469,086
Witches	27,960	37,706	125,140	110,488	108,570	101,832	83,469	94,253	108,268	82,723
Livers	51,605	43,038	35,184	44,251	47,394	45,149	50,547	43,051
Roes	65,776	61,150	48,402	47,884	65,979	53,534	58,660	67,352
Other	2,033	40,151	4,831	3,759	3,154	5,261	1,805	2,045	3,543	13,705
Total	1,632,762	2,742,219	11,954,162	12,215,777	11,839,608	11,705,403	11,530,986	12,583,523	13,830,718	14,808,625
PELAGIC FISH										
Herring	2,087,753	1,062,981	1,806,619	2,168,516	1,881,496	1,701,652	2,090,956	1,931,216	1,958,493	2,276,803
Mackerel	10,189	19,306	69,639	74,397	65,393	73,227	83,609	77,340	45,029	50,644
Sparling	903	431	41	144	52	309	140	254	662	355
Sprats	1,772	1,734	49,082	43,237	7,049	12,288	61,268	111,922	127,508	371,102
Total	2,100,617	1,084,452	1,925,381	2,286,294	1,953,990	1,787,476	2,235,973	2,120,732	2,131,692	2,698,904
WET FISH										
Total	3,733,379	3,826,671	13,879,543	14,502,071	13,793,598	13,492,879	13,766,959	14,704,255	15,962,410	17,507,529
SHELL FISH										
Crabs	14,170	9,033	111,958	99,837	102,530	115,128	125,016	156,136	135,133	94,855
Lobsters	36,775	52,691	330,370	372,618	481,122	548,404	553,879	537,579	581,437	572,035
Oysters	4,757	622	10	330	7	549
Shrimps*	9,100	14,000	12,000	11,600
Cockles*	975	2,410	4,738	585
Escallops	1,024	3,452	10,754	4,280	5,846	16,730	36,166	57,665	68,729	44,496
Mussels	4,371	4,142	5,106	3,574	5,444	7,111	8,847	12,641	10,814	6,780
Norway lobsters	124,835	267,225	262,398	378,767	484,604	536,521	733,144	882,818
Squids*	48,920	35,065	61,667	54,673	73,544	15,294	7,681	7,785
Ocher	11,260	9,913	34,375	25,969	32,062	34,545	26,865	31,729	35,458	35,056
Total	72,357	79,853	666,318	808,568	951,069	1,155,358	1,319,006	1,364,305	1,589,141	1,656,559
Total of all fish	3,805,736	3,906,524	14,545,861	15,310,639	14,744,667	14,648,237	15,085,965	16,068,560	17,551,551	19,164,088

* See Explanatory Notes

TABLE 5

British vessels: Average value of each species landed in 1913, 1938 and 1958 to 1965

	1913	1938	1958	1959	1960	1961	1962	1963	1964	1965
DEMERSAL FISH	s. d. per cwt.	s. d. per cwt.	s. d. per cwt.	s. d. per cwt.	s. d. per cwt.	s. d. per cwt.	s. d. per cwt.	s. d. per cwt.	s. d. per cwt.	s. d. per cwt.
Brill	40 7	57 0	123 0	120 11	133 10	126 5	142 2	140 9	160 8	186 11
Catfish	5 9	12 5	35 5	37 2	35 8	35 1	37 0	38 5	43 11	46 3
Cod	10 8	18 6	62 11	67 3	73 8	74 4	68 3	71 9	84 4	84 3
Conger eels	9 1	13 4	33 3	34 3	32 7	29 9	33 11	42 1	51 10	54 4
Dabs	8 2	19 6	51 10	60 1	53 9	56 4	58 9	62 0	64 5	67 11
Dogfish	23 5	26 1	23 1	26 7	28 9	28 4	33 1	34 5
Flounders	13 5	19 5	19 3	21 6	29 1	19 5	17 8	16 6	24 8	19 3
Gurnards	3 2	5 1	22 8	22 4	21 1	19 9	20 0	21 11	24 3	23 10
Haddock	15 10	20 2	57 0	67 3	70 0	73 6	68 5	68 10	55 7	52 0
Hake	16 10	34 8	156 9	169 8	140 3	128 2	113 4	155 6	217 4	204 11
Halibut	46 7	72 5	217 7	223 4	232 8	252 6	255 9	274 1	308 10	312 6
Lemon sole	45 11	71 7	170 10	177 5	175 11	162 11	177 8	191 9	210 7	203 3
Ling	7 5	11 10	35 6	41 9	40 7	48 2	42 1	46 8	54 9	65 1
Lythe	41 8	48 8	53 4	55 1	53 0	55 9	60 3	60 4
Megrims	24 4	31 6	69 2	74 0	71 4	69 11	71 1	74 4	83 0	91 7
Monks	5 5	7 7	44 0	48 10	60 8	65 4	75 9	68 5	62 5	67 4
Plaice	31 6	49 8	122 3	119 7	122 8	123 8	119 0	113 4	111 2	125 11
Porbeagles	140 0	149 10	120 0	111 10	86 3	77 0	88 4	104 1
Redfish	24 0	28 0	24 6	29 8	25 11	30 9	28 11	29 2
Saithe	3 3	5 7	28 0	29 3	30 10	32 11	35 1	27 8	27 10	28 5
Skate	5 4	16 10	50 2	52 0	57 6	57 2	61 10	67 0	67 9	75 3
Squids*	2 2	6 4
Torsk	7 4	9 8	35 9	36 7	39 6	46 2	41 1	46 10	55 5	62 10
Turbot	66 8	62 6	140 1	139 5	177 3	189 5	224 10	207 9	222 3	318 7
Whiting	9 5	17 0	42 5	51 2	53 9	47 3	49 0	49 8	45 2	37 0
Witches	19 9	36 10	73 3	87 2	79 6	85 1	76 3	78 3	84 3	91 10
Livers	17 11	14 9	13 8	14 7	14 10	12 9	12 2	11 6
Roes	89 8	91 11	99 7	105 1	110 9	106 8	104 9	79 4
Other	2 10	8 6	15 4	19 2	29 4	34 11	22 0	29 3	32 1	48 3
Total	11 11	21 11	58 8	66 2	70 4	69 7	67 9	69 0	65 9	62 2
PELAGIC FISH										
Herring	9 5	7 7	22 0	19 6	21 4	25 0	28 2	24 8	24 10	28 0
Mackerel	2 9	6 1	28 0	21 11	26 2	23 0	30 10	33 2	31 8	35 5
Sparling	59 3	71 3	136 8	70 3	148 7	131 6	87 6	137 4	119 3	107 7
Sprats	4 4	2 10	11 6	10 1	12 1	10 4	8 9	3 9	6 1	8 0
Total	9 3	7 6	21 8	19 3	21 5	24 9	26 7	19 2	21 0	20 10
WET FISH	10 3	14 3	47 6	47 10	53 2	56 1	54 2	50 2	51 2	47 8
SHELL FISH										
Crabs	9 7	10 8	54 3	55 7	63 0	59 3	60 0	56 10	54 0	53 1
Lobsters	80 8	97 11	476 10	462 5	549 8	562 6	626 2	679 0	745 4	903 9
Oysters	40 6	101 1	50 0	825 0	70 0	522 10
Shrimps*	100 0	100 0	100 0	100 0
Cockles*	21 10	20 10	21 5	22 10
Escallops	3 0	26 1	75 7	76 2	84 0	100 9	115 0	99 7	128 7	119 4
Mussels	1 1	2 0	8 2	7 6	8 5	12 3	14 5	14 2	14 6	15 1
Norway lobsters	110 10	125 6	135 5	131 10	141 6	147 1	150 10	171 1
Squids*	54 8	43 11	56 5	69 1	82 10	76 11	90 11	77 9
Other	5 6	9 4	39 8	39 5	38 8	39 5	33 4	35 6	37 4	36 6
Total	8 8	17 3	103 11	120 5	134 4	140 10	144 1	136 4	147 2	172 5
Total of all fish	10 3	14 3	48 8	49 5	55 4	58 11	57 3	53 0	54 5	50 10

* See Explanatory Notes

TABLE 6
British vessels: Quantity and value of each species landed in each district

	ALL DISTRICTS								
	1965		1964		Total		Eyemouth		
	cwt.	£	cwt.	£	cwt.	£	cwt.	£	
DEMERSAL FISH									
Brill	352	3,290	469	3,768	97	868	—	—	
Catfish	12,213	28,240	12,953	28,427	12,104	27,878	131	344	
Cod	928,784	3,913,542	911,127	3,841,086	841,560	3,575,565	30,720	106,866	
Conger eels	3,280	8,911	3,538	9,165	550	2,029	—	1	
Dabs	12,163	41,307	14,518	46,789	10,778	38,206	202	475	
Dogfish	73,612	126,766	87,501	144,590	31,529	61,341	10	15	
Flounders	1,060	1,022	878	1,083	257	147	—	—	
Gurnards	1,498	1,786	2,407	2,920	1,323	1,610	2	3	
Haddock	2,097,117	5,451,153	1,738,783	4,833,377	1,644,017	4,494,492	49,958	172,416	
Hake	47,399	485,554	51,248	556,839	18,851	222,234	57	536	
Halibut	23,305	364,178	23,812	367,738	22,354	349,805	43	874	
Lemon sole	57,127	580,460	51,930	546,679	53,343	547,469	2,346	23,439	
Ling	39,967	130,122	36,994	101,300	34,883	112,880	11	27	
Lythe	6,807	20,541	7,036	21,206	3,199	10,479	16	37	
Megrimms	13,686	62,642	17,700	73,431	7,554	35,530	—	—	
Monks	61,938	208,557	53,387	166,598	25,739	183,372	1,123	2,375	
Plaice	121,253	763,514	122,328	679,751	106,409	675,628	4,719	25,366	
Porbeagles	166	864	94	415	122	703	—	—	
Redfish	11,571	16,872	10,100	14,588	11,570	16,871	—	—	
Saithe	205,472	291,790	177,599	247,317	187,759	273,438	354	386	
Skate	101,163	380,517	108,231	366,657	79,979	205,450	938	2,183	
Torsk	24,385	76,595	23,371	64,741	24,049	75,752	—	—	
Turbot	10,953	174,485	7,617	84,629	10,581	171,486	14	136	
Whiting	793,703	1,469,086	622,846	1,406,606	600,620	1,108,570	70,706	111,574	
Witches	18,010	82,723	25,705	108,268	13,778	66,869	96	598	
Livers	74,958	43,051	82,918	50,547	74,955	43,042	4	7	
Roes	16,986	67,352	11,199	58,660	14,775	58,914	734	2,502	
Other	5,684	13,705	2,211	3,543	5,487	10,955	—	—	
Total	1965	4,764,612	14,808,625	—	—	3,865,222	12,471,583	162,184	450,160
	1964	—	—	4,208,500	13,830,718	3,523,712	11,698,493	60,455	145,785
PELAGIC FISH									
Herring	1,627,479	2,276,803	1,578,655	1,958,493	435,682	679,221	—	1	
Mackerel	28,584	50,644	28,453	45,029	22,097	41,297	211	325	
Sparling	66	355	111	662	66	355	—	—	
Sprats	930,684	371,102	420,773	127,508	917,169	366,604	—	—	
Total	1965	2,586,813	2,698,904	—	—	1,375,014	1,087,477	211	326
	1964	—	—	2,027,992	2,131,692	741,038	745,661	21	39
WET FISH									
Total	1965	7,351,425	17,507,529	—	—	5,240,236	13,559,060	162,395	450,486
	1964	—	—	6,236,492	15,962,410	4,264,750	12,444,154	60,476	145,824
SHELL FISH									
Crabs	35,765	94,855	50,016	135,133	26,283	75,387	6,383	17,841	
Lobsters	12,659	572,035	15,602	581,437	4,420	195,688	844	36,545	
Oysters	21	549	2	7	—	—	—	—	
Shrimps*	2,320	11,600	2,400	12,000	—	—	—	—	
Cockles*	513	585	4,429	4,738	—	1	—	—	
Escallops	7,456	44,496	10,690	68,729	14	22	—	—	
Mussels	8,975	6,780	14,881	10,814	8,954	6,759	—	—	
Norway lobsters	103,216	882,818	97,227	733,144	41,043	306,661	2,900	24,892	
Squids	2,002	7,785	1,690	7,681	1,532	6,012	6	27	
Other	19,229	35,056	18,995	35,458	8,352	14,477	664	1,195	
Total	1965	192,156	1,656,559	—	—	90,598	605,007	10,797	80,500
	1964	—	—	215,932	1,589,141	112,218	656,216	10,761	72,309
Total of all fish	1965	7,543,581	19,164,088	—	—	5,330,834	14,164,067	173,192	530,986
	1964	—	—	6,452,424	17,551,551	4,376,968	13,100,370	71,237	218,133

* See Explanatory Note

TABLE 6—continued

EAST COAST								
Leith		Anstruther		Arbroath		Aberdeen		
cwt.	£	cwt.	£	cwt.	£	cwt.	£	
—	—	—	—	1	5	35	330	Brill
624	1,566	130	219	182	438	10,165	23,561	Catfish
45,135	186,881	27,033	97,608	31,848	112,923	493,518	2,207,283	Cod
3	3	1	1	4	9	327	1,187	Conger eels
377	1,036	547	1,820	1,243	4,052	4,168	16,967	Dabs
5,747	16,060	—	1	6	8	19,022	33,894	Dogfish
—	—	—	—	162	108	3	2	Flounders
1	1	—	—	2	2	1,306	1,582	Gurnards
176,899	572,605	24,675	90,254	28,263	84,173	857,771	2,337,878	Haddock
385	4,231	12	174	23	172	9,014	99,777	Hake
939	10,159	29	599	61	776	19,367	302,833	Halibut
2,313	19,011	1,912	17,912	2,044	16,754	30,052	309,188	Lemon sole
1,904	5,083	—	—	5	25	31,505	104,071	Ling
1,100	3,427	1	3	1	2	1,861	6,395	Lythe
330	968	—	1	3	8	4,200	21,455	Megrims
985	2,479	1,093	2,949	305	878	24,082	88,179	Monks
1,596	9,277	7,975	37,627	15,297	61,619	38,036	283,303	Plaice
—	—	—	—	6	48	76	452	Porbeagles
43	69	—	—	—	—	11,520	16,771	Redfish
15,285	25,426	172	107	143	166	167,561	241,230	Saithe
2,395	7,430	111	356	1,379	2,593	45,218	175,883	Skate
114	241	—	—	—	—	23,916	75,445	Torsk
211	1,393	97	770	48	399	9,527	159,657	Turbot
16,392	35,535	24,109	51,853	18,932	28,284	175,689	407,421	Whiting
113	669	24	122	12	52	4,910	24,759	Witches
—	—	—	—	—	—	74,004	42,646	Livers
736	2,050	240	1,011	232	1,458	6,892	26,986	Roes
450	866	—	—	732	1,292	4,300	8,765	Other
274,077	906,466	88,161	303,387	100,934	316,244	2,068,045	7,017,900	
276,188	895,867	92,077	275,635	121,000	325,463	2,121,288	7,270,886	
313	427	17	27	181	388	70,884	153,595	Herring
2,118	5,259	2,120	3,207	5	13	5,521	7,380	Mackerel
—	—	66	355	—	—	—	—	Sparling
238,376	75,552	9,504	4,966	9,369	3,932	81,901	39,523	Sprats
240,807	81,238	11,707	8,555	9,555	4,333	158,306	200,498	
221,161	70,834	2,946	3,409	3,307	1,107	107,023	201,015	
514,884	987,704	99,868	311,942	110,489	320,577	2,226,351	7,218,398	
497,349	966,701	95,023	279,044	124,307	326,570	2,228,311	7,471,901	
2,333	6,157	2,548	7,720	3,278	8,858	599	1,491	Crabs
655	27,561	884	37,800	711	35,203	73	3,841	Lobsters
—	—	—	—	—	—	—	—	Oysters
—	—	—	—	—	—	—	—	Shrimps
—	—	—	1	—	—	—	—	Cockles
—	—	—	—	—	—	13	18	Escallops
1,000	500	1,507	1,004	4,978	4,502	—	—	Mussels
8,255	58,661	9,427	69,995	74	500	52	319	Norway lobsters
1	1	96	415	61	287	293	764	Squids
—	—	2,878	5,630	—	—	—	—	Other
12,244	92,880	17,340	122,565	9,102	49,350	1,030	6,433	
14,930	114,372	16,963	96,695	11,682	61,023	1,430	8,134	
527,128	1,080,584	117,208	434,507	119,591	369,927	2,227,381	7,224,831	
512,279	1,081,073	111,986	375,739	135,989	387,593	2,229,741	7,480,035	

TABLE 6—continued

		EAST COAST (continued)							
		Peterhead		Fraserburgh		Macduff		Buckie	
DEMERSAL FISH		cwt.	£	cwt.	£	cwt.	£	cwt.	£
Brill		1	4	—	—	—	2	9	87
Catfish		274	555	368	693	3	13	178	390
Cod		14,558	61,440	38,180	162,860	30,532	122,539	59,671	241,653
Conger eels		—	1	164	717	1	2	4	12
Dabs		285	528	569	2,699	711	2,388	792	2,424
Dogfish		676	1,386	4,218	7,628	47	56	973	1,183
Flounders		63	22	3	2	—	—	—	—
Gurnards		1	2	—	—	—	—	5	12
Haddock		87,081	195,224	152,740	348,695	26,686	81,093	90,936	238,605
Hake		380	3,724	2,741	32,556	612	7,285	4,035	54,800
Halibut		309	6,046	691	13,719	76	1,650	622	9,256
Lemon sole		1,585	15,868	4,140	49,173	2,466	31,788	2,736	26,694
Ling		166	372	493	1,239	101	233	649	1,693
Lythe		9	24	28	69	10	27	27	61
Megrim		209	849	1,042	5,131	—	1	1,326	5,331
Monks		4,671	15,661	9,703	33,354	1,101	3,777	7,563	27,878
Plaice		7,215	41,609	2,825	23,763	5,074	38,104	8,927	60,575
Porbeagles		3	20	4	23	4	19	24	111
Redfish		—	—	7	31	—	—	—	—
Saithe		126	155	795	1,131	388	495	1,168	2,100
Skate		4,061	19,391	9,121	49,814	528	1,072	6,285	17,862
Torsk		6	16	—	—	—	—	—	—
Turbot		204	3,199	213	3,337	10	83	126	1,338
Whiting		46,347	73,082	111,953	178,768	32,995	48,942	53,588	97,011
Witches		2,526	11,929	5,056	24,992	9	43	938	3,354
Livers		—	—	4	4	—	2	3	7
Roes		84	501	608	3,472	788	4,625	2,042	8,075
Other		1	9	—	—	—	—	—	—
Total	1965	170,841	451,617	345,666	943,870	102,142	344,239	242,627	800,512
	1964	80,103	194,193	232,501	722,789	98,378	366,587	177,810	627,047
PELAGIC FISH									
Herring		25,072	38,029	181,166	353,763	—	—	12,882	23,631
Mackerel		81	129	5,317	11,881	3,413	6,725	1,557	3,476
Sparling Sprats		60,644	26,268	80,384	35,666	767	367	165,761	76,099
Total	1965	85,797	64,426	266,867	401,310	4,180	7,092	180,200	103,206
	1964	27,803	45,782	183,895	326,455	401	850	17,955	21,690
WET FISH									
Total	1965	256,638	516,043	612,533	1,345,180	106,322	351,331	422,827	903,718
	1964	107,906	239,975	416,396	1,049,244	98,779	367,437	195,765	648,737
SHELL FISH									
Crabs		1,804	4,951	6,637	21,885	120	289	6	15
Lobsters		76	3,099	147	5,875	80	3,657	19	777
Oysters		—	—	—	—	—	—	—	—
Shrimps		—	—	—	—	—	—	—	—
Cockles		—	—	—	—	—	—	—	—
Escallops		—	—	1	3	—	1	—	—
Mussels		—	—	—	—	—	—	—	—
Norway lobsters		717	4,575	1,147	7,746	80	319	12,392	94,120
Squids		6	13	185	660	150	656	129	466
Other		352	656	1,806	2,688	2,107	3,035	—	—
Total	1965	2,955	13,294	9,923	38,857	2,537	7,957	12,546	95,378
	1964	6,572	25,449	15,997	66,334	1,755	9,001	17,983	114,705
Total of all fish	1965	259,593	529,337	622,456	1,384,037	108,859	359,288	435,373	999,096
	1964	114,478	265,424	432,393	1,115,578	100,534	376,438	213,748	763,442

TABLE 6—continued

				ORKNEY AND SHETLAND		
Lossiemouth		Wick		Lerwick		
cwt.	£	cwt.	£	cwt.	£	
36	311	15	129	—	—	Brill
49	99	—	—	5	5	Catfish
44,458	165,555	25,907	109,957	907	2,526	Cod
1	2	45	94	5	3	Conger eels
1,011	2,977	873	2,840	147	342	Dabs
497	580	333	530	2,662	1,974	Dogfish
26	13	—	—	15	7	Flounders
6	8	—	—	114	69	Gurnards
69,653	179,126	79,355	194,423	168,264	233,656	Haddock
1,346	16,535	246	2,444	255	1,601	Hake
124	2,128	93	1,765	168	2,238	Halibut
1,514	16,006	2,235	21,636	155	994	Lemon sole
41	121	8	16	72	288	Ling
133	404	13	30	—	—	Lythe
257	1,048	187	738	897	3,847	Megrims
1,363	3,640	750	2,202	676	1,700	Monks
7,695	48,487	7,050	45,898	1,304	4,850	Plaice
5	30	—	—	15	89	Porbeagles
—	—	—	—	—	—	Redfish
520	589	1,247	1,653	98	154	Saithe
2,476	6,683	7,467	22,183	1,862	4,130	Skate
13	50	—	—	1	2	Torsk
42	349	89	825	2	28	Turbot
33,578	49,527	16,331	26,573	48,309	67,534	Whiting
85	314	9	37	137	628	Witches
940	376	—	—	—	—	Livers
2,128	6,542	291	1,692	41	307	Roes
—	4	4	19	—	—	Other
167,997	501,504	142,548	435,684	226,111	326,972	
129,822	429,956	134,090	444,285	122,209	221,722	
144,491	107,921	676	1,439	121,761	181,628	Herring
58	137	1,696	2,765	1,815	1,699	Mackerel
—	—	—	—	—	—	Sparling
270,433	104,213	30	18	—	—	Sprats
414,982	212,271	2,402	4,222	123,576	183,327	
171,455	64,121	5,071	10,359	98,734	124,519	
582,979	713,775	144,950	439,906	349,687	510,299	
301,277	494,077	139,161	454,644	220,943	346,241	
—	—	2,575	6,180	7,663	15,161	Crabs
176	7,630	755	33,700	4,442	205,645	Lobsters
—	—	—	—	—	—	Oysters
—	—	—	—	—	—	Shrimps
—	—	—	—	—	—	Cockles
—	—	—	—	—	—	Escallops
1,469	753	—	—	—	—	Mussels
5,994	45,496	5	38	—	—	Norway lobsters
597	2,702	8	21	—	—	Squids
45	73	500	1,200	2,223	3,617	Other
8,281	56,654	3,843	41,139	14,328	224,423	
7,967	48,439	6,178	39,755	17,649	222,332	
591,260	770,429	148,793	481,045	364,015	734,722	
309,244	542,516	145,339	494,399	238,592	568,573	

TABLE 6—continued

		WEST COAST							
		Total		Stornoway		Ullapool		Kyle	
		cwt.	£	cwt.	£	cwt.	£	cwt.	£
DEMERSAL FISH									
Brill		255	2,422	3	21	1	12	20	157
Catfish		104	357	—	—	25	155	—	—
Cod		86,317	335,451	1,540	4,584	42,063	178,707	2,633	7,103
Conger eels		2,725	6,879	560	1,337	188	419	499	1,386
Dabs		1,238	2,759	4	11	351	818	2	3
Dogfish		39,421	63,451	28	19	31,303	47,625	2,396	5,546
Flounders		788	868	50	114	16	40	—	—
Gurnards		61	107	22	41	—	—	—	—
Haddock		284,836	723,005	3,239	8,839	207,414	455,467	1,150	1,644
Hake		28,293	261,719	43	127	6,042	49,056	1,165	13,305
Halibut		783	12,135	34	283	426	6,997	7	68
Lemon sole		3,629	31,997	111	724	2,386	19,967	38	195
Ling		5,012	16,954	1,729	8,661	1,269	2,654	181	492
Lythe		3,608	10,062	296	618	2,050	6,445	529	1,104
Megrims		5,235	23,265	125	355	4,429	21,165	114	254
Monks		8,523	23,485	150	201	4,066	14,258	1,704	3,713
Plaice		13,540	83,036	236	1,416	4,067	27,692	122	648
Porbeagles		29	72	—	—	5	18	13	51
Redfish		1	1	—	—	1	1	—	—
Saithe		17,615	18,198	128	107	4,597	5,941	782	798
Skate		19,322	70,937	177	466	7,007	24,346	2,046	7,416
Torsk		335	841	—	—	3	9	—	—
Turbot		370	2,971	—	1	63	433	—	—
Whiting		144,774	292,982	3,676	3,555	79,050	138,835	1,020	552
Witches		4,095	15,226	42	125	1,686	6,808	472	1,045
Livers		3	9	—	—	1	5	—	—
Roes		2,170	8,131	18	68	806	3,990	27	103
Other		197	2,750	10	5	3	4	1	—
Total	1965	673,279	2,010,070	12,221	31,678	399,318	1,011,867	14,921	45,583
	1964	562,579	1,910,503	11,917	32,270	278,394	872,135	11,259	47,845
PELAGIC FISH									
Herring		1,070,036	1,415,954	54,377	34,121	256,084	279,181	236,777	333,837
Mackerel		4,672	7,648	93	135	188	245	247	280
Sparling		—	—	—	—	—	—	—	—
Sprats		13,515	4,498	—	—	—	—	—	—
Total	1965	1,088,223	1,428,100	54,470	34,256	256,272	279,426	237,024	334,117
	1964	1,188,220	1,261,512	58,756	42,385	354,798	398,889	287,861	345,804
WET FISH									
	1965	1,761,502	3,438,170	66,691	65,934	655,590	1,291,293	251,945	379,700
	1964	1,750,799	3,172,015	70,673	74,655	633,192	1,271,024	299,120	393,649
SHELL FISH									
Crabs		1,819	4,307	—	—	1,190	2,733	620	1,553
Lobsters		3,797	170,702	1,086	47,304	308	14,087	1,105	55,408
Oysters		21	549	—	—	—	—	—	—
Shrimps		2,320	11,600	—	—	—	—	—	—
Cockles		513	584	239	246	—	—	—	—
Escallops		7,442	44,474	—	—	—	—	1,156	6,891
Mussels		21	21	—	—	—	—	—	—
Norway lobsters		62,173	576,157	4,563	42,495	8,583	84,660	15,582	152,111
Squids		470	1,773	—	—	113	273	3	7
Other		8,654	16,962	981	1,827	10	23	1,522	3,044
Total	1965	87,230	827,129	6,869	91,872	10,204	101,776	19,988	219,014
	1964	86,065	710,593	11,025	113,323	10,604	106,127	14,233	153,847
Total of all fish	1965	1,848,732	4,265,299	73,560	157,806	665,794	1,393,069	271,933	598,714
	1964	1,836,864	3,882,608	81,698	187,978	643,796	1,377,151	313,353	547,496

TABLE 6—continued

Oban		Campbeltown		Ayr		
cwt.	£	cwt.	£	cwt.	£	
3	25	—	1	228	2,206	Brill
—	—	—	—	79	202	Catfish
3,602	14,865	6,238	16,589	30,241	113,603	Cod
182	535	104	128	1,192	3,074	Conger eels
214	666	37	87	630	1,174	Dabs
1,591	3,351	1,280	1,198	2,823	5,712	Dogfish
—	—	—	—	722	714	Flounders
7	20	13	17	19	29	Gurnards
34,831	118,645	4,283	15,416	33,919	122,994	Haddock
6,658	72,719	2,470	18,159	11,915	108,353	Hake
6	114	1	9	309	4,664	Halibut
679	5,996	48	410	367	4,705	Lemon sole
73	134	1	1	1,759	5,012	Ling
69	140	6	7	658	1,748	Lythe
144	484	1	—	422	1,007	Megrims
895	1,981	312	535	1,396	2,797	Monks
2,456	14,539	666	3,208	5,993	35,533	Plaice
—	—	—	—	11	3	Porbeagles
161	261	2,775	1,407	—	—	Redfish
3,386	14,704	873	2,654	9,172	9,684	Saithe
2	5	1	1	5,833	21,351	Skate
68	529	10	70	329	826	Torsk
25,856	62,294	11,083	29,636	229	1,938	Turbot
875	3,294	276	908	24,089	58,110	Whiting
2	4	—	—	744	3,046	Witches
24	85	175	619	—	—	Livers
—	—	—	—	1,120	3,266	Roes
—	—	—	—	183	2,741	Other
81,784	315,390	30,653	91,060	134,382	514,492	
89,004	344,272	25,309	79,489	146,696	534,492	
218,709	293,571	124,493	259,385	179,596	215,859	Herring
46	98	967	1,298	3,131	5,592	Mackerel
—	—	—	—	—	—	Sparling
—	—	6,674	2,325	6,841	2,173	Sprats
218,755	293,669	132,134	263,008	189,568	223,624	
160,135	187,513	171,238	146,682	155,432	140,239	
300,539	609,059	162,787	354,068	323,950	738,116	
249,139	531,785	196,547	226,171	302,128	674,731	
8	20	—	—	1	1	Crabs
579	27,957	362	11,684	357	14,262	Lobsters
—	—	21	549	—	—	Oysters
—	—	—	—	2,320	11,600	Shrimps
—	—	—	—	274	338	Cockles
313	1,743	3,701	20,234	2,272	15,606	Escallops
—	—	—	—	21	21	Mussels
7,285	63,639	3,956	28,601	22,204	204,651	Norway lobsters
313	1,310	3	14	38	169	Squids
1,056	2,174	1,772	3,122	3,313	6,772	Other
9,554	96,843	9,815	64,204	30,800	253,420	
5,725	54,895	13,396	86,520	31,082	195,881	
310,093	705,902	172,602	418,272	354,750	991,536	
254,864	586,680	209,943	312,691	333,210	870,612	

TABLE 7

British trawlers (all trawl methods other than for Norway lobsters): Quantity and value of each

	ALL DISTRICTS												
	1965						1964						
	Total		Motor*		Steam		Total		Motor		Steam		
	17,889		17,756		133		12,785		12,532		253		
Number of arrivals	48,123		46,688		1,435		44,301		42,220		2,081		
Number of days absent	491,351		475,809		15,542		473,918		451,452		22,466		
Hours fishing													
	cwt.		£		cwt.		£		cwt.		£		
DEMERSAL FISH													
Brill	96	959	95	952	1	7	168	1,336	167	1,332	1	4	
Catfish	10,014	23,050	9,295	21,551	719	1,499	9,205	20,660	8,131	18,025	1,074	2,635	
Cod	502,796	2,236,340	476,947	2,125,382	25,849	110,958	493,653	2,146,454	459,198	2,004,199	34,455	142,255	
Conger eels	479	1,047	467	1,020	12	27	486	1,053	481	1,042	5	11	
Dabs	4,517	17,341	4,353	16,652	164	689	5,315	18,809	5,198	18,354	117	455	
Dogfish	27,587	55,642	26,705	53,760	882	1,882	38,538	76,378	37,695	74,860	843	1,518	
Flounders	313	540	313	540	—	—	298	497	298	497	—	—	
Gurnards	1,328	1,641	1,258	1,518	70	133	1,915	2,511	1,888	2,476	27	35	
Haddock	790,791	2,384,475	764,479	2,292,577	26,312	91,898	824,924	2,700,748	789,567	2,560,597	35,357	140,151	
Hake	13,419	144,318	13,375	143,805	44	513	10,017	101,447	9,835	99,394	182	2,053	
Halibut	11,705	163,885	10,958	153,868	747	10,017	10,146	136,652	9,487	127,470	659	9,182	
Lemon sole	28,192	282,138	27,152	273,098	1,040	9,040	24,683	253,277	23,569	242,344	1,114	10,933	
Ling	11,440	32,529	11,142	31,766	298	763	13,592	32,787	13,156	31,778	436	1,009	
Lyche	4,115	12,878	4,038	12,637	77	241	4,604	14,372	4,541	14,151	63	221	
Megrim	4,573	19,160	4,465	18,683	108	477	5,476	21,763	5,279	21,012	197	751	
Monks	33,828	120,115	32,989	117,203	839	2,912	23,010	76,117	21,861	72,189	1,149	3,928	
Plaice	27,496	210,387	26,803	204,338	693	6,049	26,791	170,871	26,096	166,259	695	4,612	
Porbeagles	61	327	56	299	5	28	41	157	38	151	3	6	
Redfish	11,416	16,604	10,961	16,019	455	585	9,942	14,299	8,448	11,978	1,494	2,321	
Saithe	185,426	270,301	176,264	256,836	9,162	13,465	161,857	226,867	148,765	208,603	13,092	18,264	
Skate	43,770	158,432	42,984	155,780	786	2,652	42,005	125,881	41,051	123,181	954	2,700	
Torsk	1,710	3,939	1,588	3,654	122	285	1,852	4,256	1,642	3,790	210	466	
Turbot	9,887	163,373	9,860	162,990	27	383	6,212	71,435	6,057	69,593	155	1,842	
Whiting	146,591	321,513	144,943	317,461	1,648	4,052	142,515	374,433	139,847	367,485	2,668	6,948	
Witches	3,497	13,519	3,402	13,258	95	261	2,695	11,722	2,618	11,494	77	228	
Livers	73,354	41,939	70,199	39,305	3,155	2,634	81,275	49,213	75,744	44,821	5,531	4,392	
Roes	7,085	27,145	6,699	25,858	386	1,287	5,690	27,263	5,307	25,930	383	1,333	
Other	4,915	12,214	4,914	12,212	1	2	1,897	2,941	1,812	2,846	85	95	
Total . . . 1965	1,960,401	6,735,751	1,886,704	6,473,022	73,697	262,729	—	—	—	—	—	—	
1964	—	—	—	—	—	—	1,948,802	6,684,199	1,847,776	6,325,851	101,026	358,348	
PELAGIC FISH													
Herring	9,751	10,713	9,723	10,685	28	28	14,659	17,804	14,645	17,796	14	8	
Mackerel	8,428	14,746	8,359	14,642	69	104	11,793	19,509	11,609	19,289	184	220	
Spratling	—	—	—	—	—	—	—	—	—	—	—	—	
Sprats	835,464	335,045	835,464	335,045	—	—	179,579	61,713	179,579	61,713	—	—	
Total . . . 1965	853,643	360,504	853,546	360,372	97	132	—	—	—	—	—	—	
1964	—	—	—	—	—	—	206,031	99,026	205,833	98,798	198	228	
WET FISH	1965	2,814,044	7,096,255	2,740,250	6,833,394	73,794	262,861	—	—	—	—	—	—
1964	—	—	—	—	—	—	2,154,833	6,783,225	2,053,609	6,424,649	101,224	358,576	
Norway lobsters	11,325	101,054	11,325	101,054	—	—	12,294	109,699	12,294	109,699	—	—	
Squids	293	742	285	735	8	7	82	259	82	259	—	—	

* Includes 5,775 arrivals, 5,814 days absent and 23,464 hours fishing by motor vessels using two-boat pelagic trawl landing 841,311 cwt. valued at £342,341. Note.—This method was previously recorded under light trawl and the catch consists almost entirely of sprats.

TABLE 7—continued

species landed in each district

LEITH		ABERDEEN				OTHER DISTRICTS		
Motor		Motor		Steam		Motor		
2,027		5,543		133		10,186		
5,301 45,099		26,897 313,439		1,435 15,542		14,490 146,828		
cwt.	£	cwt.	£	cwt.	£	cwt.	£	
618	1,550	32	308	1	7	63	644	Brill
41,060	174,886	8,269	19,152	719	1,499	408	849	Catfish
3	3	402,416	1,810,566	25,849	110,958	33,471	139,930	Cod
315	852	118	287	12	27	346	730	Conger eels
5,740	16,048	3,408	14,361	164	689	630	1,439	Dabs
—	—	15,459	27,598	882	1,882	5,506	10,114	Dogfish
1	1	—	—	—	—	313	540	Flounders
173,617	560,958	1,214	1,439	70	123	43	78	Gurnards
382	4,205	535,240	1,587,160	26,312	91,898	55,622	144,459	Haddock
932	10,010	7,831	87,585	44	513	5,162	52,015	Hake
2,160	17,669	8,939	126,053	747	10,017	1,087	17,805	Halibut
1,903	5,081	22,782	233,968	1,040	9,040	2,210	21,461	Lemon sole
1,100	3,427	5,750	15,107	298	763	3,489	11,578	Ling
329	960	1,617	5,583	77	241	1,321	3,627	Lythe
744	1,973	1,780	8,248	108	477	2,356	9,475	Megrims
945	6,801	18,361	68,165	839	2,912	13,884	47,065	Monks
43	69	22,887	177,354	693	6,049	2,971	20,183	Plaice
15,258	25,383	40	224	5	28	16	75	Porbeagles
2,354	7,326	10,918	15,949	455	585	—	1	Redfish
114	241	157,048	225,365	9,162	13,465	3,958	6,088	Saithe
208	1,374	26,625	91,068	786	2,652	14,005	57,386	Skate
8,959	23,174	1,145	2,589	122	285	329	824	Torsk
109	639	9,196	155,822	27	383	456	5,794	Turbot
715	1,993	96,196	227,117	1,648	4,052	39,788	67,170	Whiting
450	856	890	3,367	95	261	2,403	9,252	Witches
—	—	70,199	39,304	3,155	2,634	—	1	Livers
—	—	5,732	22,581	386	1,287	252	1,284	Roes
—	—	4,283	8,746	1	2	181	2,610	Other
258,059	865,479	1,438,375	4,975,066	73,697	262,729	190,270	632,477	
233,715	793,568	1,471,484	5,040,578	101,026	358,348	142,577	491,705	
313	427	663	1,415	28	28	8,747	8,843	Herring
1,886	5,000	4,810	6,369	69	104	1,663	3,273	Mackerel
217,566	70,245	79,686	38,483	—	—	—	—	Sparling
219,765	75,672	85,159	46,267	97	132	538,212	226,317	Sprats
86,094	34,519	12,442	16,000	198	228	548,622	238,433	
477,824	941,151	1,523,534	5,021,333	73,794	262,861	107,297	48,279	
319,809	828,087	1,483,926	5,056,578	101,224	358,576	738,892	870,910	
—	—	43	289	—	—	249,874	539,984	
—	—	262	659	8	7	11,282	100,765	Norway lobsters
—	—	—	—	—	—	23	76	Squids

TABLE 8

British vessels using light trawl: Quantity and value of each species landed in each district*

	ALL DISTRICTS		Ayr	Ullapool	Buckie	Fraserburgh	Peterhead	Aberdeen	Eyemouth	1964		Other Districts
	1965									1966		
	cwt.	£								cwt.	£	
Number of arrivals	6,371	6,323	775	2,184	759	491	706	41	851	—	1,105	
Number of days absent	10,140	8,643	452	3,329	1,978	1,013	1,190	210	851	—	1,117	
DEMERSAL FISH												
Brill	55	563	46	6	20	—	4	—	—	—	6	
Catfish	349	693	—	—	241	—	168	41	—	—	—	
Cod	30,015	126,659	919	42,337	37,639	2,927	10,397	1,045	2,553	2,927	2,047	
Conger eels	340	715	53	97	4	3	13	—	—	3	185	
Dabs	243	701	6	213	4	14	16	—	7	14	431	
Dogfish	4,291	7,062	108	5,853	257	105	126	54	80	105	28	
Flounders	2	6	—	—	—	—	—	—	—	—	102	
Gurnards	30	58	—	—	—	—	—	—	—	—	300	
Haddock	35,570	73,708	567	24,339	16,347	3,940	14,917	1,950	7,482	3,940	38	
Hake	4,101	42,165	1,019	17,685	9,470	229	97	28	97	229	3,116	
Halibut	831	14,108	1	105	5,415	165	2,154	49	110	165	99	
Lemon sole	2,033	19,439	30	4,097	1,945	181	8,145	396	780	181	263	
Ling	1,815	6,826	3	619	1,360	78	84	79	42	78	1,105	
Lythe	711	2,030	6	260	507	3	8	2	3	3	4,344	
Megrim	1,992	8,719	5	1,620	23	2	102	51	32	94	358	
Monks	14,392	48,978	130	9,167	12,833	4,417	8,252	985	2,535	4,417	89	
Plaice	2,589	18,111	278	2,485	7,134	71	2,259	28	315	71	267	
Porbeagies	—	—	—	—	—	—	—	—	—	—	2,543	
Redfish	1	1	—	—	—	—	—	—	—	—	—	
Saithe	1,585	2,467	142	1,299	560	70	52	134	38	70	40	
Skate	12,243	52,598	392	2,089	6,863	2,870	11,015	1,078	2,334	2,870	1,955	
Torsk	—	—	—	—	—	—	—	—	—	—	—	
Turbot	342	4,997	19	13	655	85	2,396	21	142	85	8	
Whiting	39,545	65,863	970	39,258	6,785	2,331	7,223	648	5,412	2,331	3,248	
Witches	2,527	9,697	25	3,664	1,396	673	1,135	128	343	673	161	
Livers	—	—	—	—	—	—	—	—	—	—	—	
Rees	179	1,135	—	—	—	—	—	—	—	—	—	
Other	90	1,856	86	1,843	—	3	74	14	10	3	131	
Total	155,871	509,156	4,810	168,091	113,015	18,386	69,520	6,353	17,780	22,344	8,876	
	—	—	—	—	—	—	—	—	—	—	—	
1964	—	—	—	—	—	—	—	—	—	—	—	
	—	—	—	—	—	—	—	—	—	—	—	
PELAGIC FISH												
Herring	771	1,558	3	—	1,350	66	142	—	—	—	18	
Mackerel	208	267	5	—	169	34	15	6	8	34	9	
Sprattling	—	—	—	—	—	—	—	—	—	—	—	
Sprats	1,956	860	—	—	89	1,763	—	—	—	—	—	
Total	2,935	2,685	8	—	1,608	970	15	6	8	6	27	
	—	—	—	—	—	—	—	—	—	—	—	
1964	—	—	—	—	—	—	—	—	—	—	—	
	—	—	—	—	—	—	—	—	—	—	—	
WET FISH	158,806	511,841	4,818	168,091	114,623	18,386	69,520	6,359	17,780	22,350	8,903	
	—	—	—	—	—	—	—	—	—	—	—	
1964	—	—	—	—	—	—	—	—	—	—	—	
	—	—	—	—	—	—	—	—	—	—	—	
Norway lobsters	11,311	100,975	741	48,730	15,793	786	5,729	30	1,843	786	568	
Squids	23	77	4	8	21	—	4	—	2	—	7	

* The quantities and values shown in this Table are included in Table 7.

TABLE 9

British seine net vessels: Quantity and value of each species landed in each district

Species	ALL DISTRICTS				EAST COAST						
	1965		1964		Total	Eymouth	Leith	Anstruther	Arbroath	Aberdeen	
	cwt.	£	cwt.	£	cwt.	cwt.	£	cwt.	£	cwt.	£
DEMERSAL FISH											
Number of arrivals	80,402		79,170		60,865	5,234	1,070	4,790	4,079	5,063	
Number of days absent	97,312		101,532		75,739	5,455	1,108	5,431	5,431	11,888	
Brill	184	1,709	221	1,845	60	520	—	—	—	—	15
Crabs	2,071	4,921	3,599	7,493	2,061	4,807	6	127	138	2	2
Cod	350,921	1,363,212	325,976	1,318,412	293,045	1,155,548	3,367	21,528	47,767	1,127	2,806
Conger eels	120	172	197	340	22	54	—	93,115	3	43,492	193,575
Dabs	7,196	22,296	8,776	26,185	6,298	20,124	31	497	3,787	595	1,912
Dogfish	39,544	60,412	41,129	58,003	7,994	13,626	10	1,655	1,178	2,392	3,802
Flounders	651	341	508	424	258	136	—	—	162	—	—
Gurnards	147	133	374	474	33	33	—	—	108	—	—
Haddock	1,289,668	3,013,998	895,864	2,045,937	877,536	2,173,439	3,229	24,365	61,538	294,987	652,374
Hake	27,162	263,968	32,340	346,975	7,504	85,978	3	11	24	1,085	10,831
Halibut	2,321	40,345	2,481	41,890	1,914	34,405	5	113	60	11,521	6,995
Lemon sole	28,573	295,314	26,522	288,051	25,736	270,759	14	1,824	16,663	6,230	66,180
Ling	2,876	7,388	3,074	7,295	1,789	5,057	—	—	25	1,239	3,740
Lythe	709	2,034	877	2,439	367	1,143	—	—	—	155	537
Megrims	8,609	41,711	11,594	49,633	4,234	21,499	1	996	8	2,312	12,730
Monks	23,314	75,322	25,426	77,174	20,378	67,398	7	216	297	4,944	16,995
Plaice	91,210	541,644	93,512	500,578	78,717	467,137	342	1,496	61,313	14,454	99,894
Porbeagles	69	353	25	128	42	265	—	—	—	—	173
Redfish	11,395	13,460	9,960	13,696	3,745	5,257	—	—	77	599	993
Skate	38,728	144,654	49,109	171,643	113,150	480	28	169	2,573	6,291	32,060
Torsk	18	62	18	54	14	14	—	108	346	—	—
Turbot	934	10,204	1,270	12,149	791	9,114	2	96	48	399	3,324
Whiting	631,436	1,124,457	464,689	1,006,449	471,480	824,375	7,001	23,066	27,153	77,833	176,220
Witches	13,162	65,434	21,748	92,774	11,019	56,568	4	122	50	3,924	21,127
Livers	953	402	1,468	181	296	196	—	—	—	—	—
Roos	9,093	36,907	4,819	27,760	7,114	29,185	22	2,446	567	268	1,394
Other	109	213	113	239	107	184	—	—	132	15	17
Total	2,581,195	7,151,137	—	—	1,852,096	5,360,223	14,441	37,018	224,332	462,859	1,312,257
			2,014,495	6,098,343	1,499,106	4,563,543	54,990	133,195	90,849	459,835	1,418,281
PELAGIC FISH											
Herring	896	1,627	1,159	2,167	196	406	—	—	181	14	15
Mackerel	1,166	1,849	1,284	2,113	940	1,519	43	246	6	381	582
Sprats	21,287	8,759	410	185	21,287	8,759	—	—	1,843	2,215	1,040
Total	23,349	12,235	—	—	22,423	10,684	43	371	1,127	2,610	1,637
			2,853	4,465	1,959	3,271	22	204	84	279	652
WET FISH	2,604,544	7,163,372	—	—	1,874,519	5,370,907	14,484	37,066	225,459	465,469	1,313,894
			2,017,348	6,102,808	1,501,065	4,566,814	40,203	96,990	91,016	460,114	1,418,933
Norway lobsters	7,452	58,222	12,390	86,523	5,851	44,081	1,835	2,781	69	470	30
Squids	1,650	6,769	1,509	6,943	1,198	5,058	—	82	287	23	98

TABLE 9—continued

Number of arrivals Number of days absent	EAST COAST (continued)										ORKNEY AND SHETLAND			
	Peterhead		Fraserburgh		Macduff		Buckie		Lossiemouth		Wick		Lerwick	
	cwt.	£	cwt.	£	cwt.	£	cwt.	£	cwt.	£	cwt.	£	cwt.	£
DEMERSAL FISH														
Brill	188	386	241	465	3	2	7	67	35	302	15	129	—	—
Cod	10,679	44,854	25,012	104,987	30,155	120,910	49,382	195,956	44,351	164,920	19,661	80,719	809	2,240
Conger eels	268	486	446	1,919	711	2,387	583	1,867	938	2,788	850	2,752	147	342
Dabs	589	1,250	3,506	6,509	47	56	—	908	497	580	298	488	1,196	735
Dogfish	63	22	3	2	—	—	—	—	23	12	—	—	15	7
Flounders	79,515	180,164	147,332	336,530	26,580	80,740	81,911	219,158	69,506	178,773	79,288	194,222	167,999	233,267
Gurnards	278	2,711	2,400	22,860	608	7,210	1,465	17,663	1,335	16,429	240	2,404	255	1,601
Haddock	178	3,453	521	10,352	75	1,640	152	2,344	119	2,048	47	897	84	853
Halibut	805	7,717	3,948	47,147	2,458	31,664	2,357	23,614	1,509	15,963	2,230	21,583	154	994
Lemon sole	107	233	188	432	97	222	106	266	40	119	—	—	72	288
Ling	9	24	25	63	10	13	133	404	133	404	6	14	—	—
Lythe	177	747	946	4,731	1	1	355	1,497	255	1,042	185	735	896	3,847
Megrims	2,103	7,314	5,204	18,298	1,082	3,698	2,516	9,133	1,291	3,458	747	2,195	676	1,700
Monks	6,780	38,399	2,750	23,125	5,070	38,078	7,761	52,423	7,533	47,812	6,984	45,153	1,302	4,844
Plaice	3	20	4	23	4	19	—	—	5	30	—	—	11	67
Porbeagles	—	—	—	—	—	—	—	—	—	—	—	—	—	—
Redfish	86	102	264	377	384	489	762	1,442	514	586	535	692	85	149
Saithe	1,659	8,062	5,849	31,333	525	1,064	3,047	8,835	2,258	6,124	7,262	21,480	1,839	4,092
Skate	—	—	—	—	—	—	—	—	—	—	—	—	—	—
Torsk	61	796	127	2,018	10	83	47	496	34	288	89	875	2	28
Turbot	40,915	65,850	109,484	175,716	32,963	48,884	44,445	85,701	33,334	49,203	16,323	26,561	48,252	67,445
Whiting	2,173	10,773	4,367	22,110	9	43	318	1,390	83	308	10	37	137	628
Witches	—	—	—	—	—	—	—	—	—	—	—	—	—	—
Livers	73	418	602	3,437	774	4,556	1,946	7,440	2,127	6,527	251	1,324	41	307
Roes	—	—	—	—	—	—	—	—	—	—	—	—	—	—
Other	—	—	—	—	—	—	—	—	—	—	—	—	—	—
Total	146,709	373,782	313,226	817,449	101,566	341,790	197,880	630,371	166,930	498,252	135,028	402,250	224,073	323,505
	70,538	164,618	202,368	598,638	96,837	359,506	147,017	502,662	128,766	426,798	119,129	377,371	117,992	217,131
PELAGIC FISH														
Herring	—	—	—	—	—	—	—	—	—	—	—	—	—	—
Mackerel	9	8	6	14	123	233	21	35	46	121	24	30	66	61
Sparling	13,072	5,355	329	160	—	—	67	30	3,761	1,448	—	—	—	—
Sprats	—	—	—	—	—	—	—	—	—	—	—	—	—	—
Total	13,081	5,363	335	174	123	233	89	67	3,807	1,569	24	30	66	61
	110	59	36	84	58	50	775	1,523	133	223	122	131	112	101
WET FISH	159,790	379,145	313,561	817,623	101,689	342,023	197,969	630,438	170,737	499,821	135,052	402,280	224,139	323,566
	70,648	164,677	202,404	598,722	96,895	359,556	147,792	504,185	128,899	427,021	119,251	377,502	118,104	217,232
Norway lobsters	13	42	202	1,124	69	269	276	2,056	384	2,868	—	—	—	—
Squids	5	9	185	660	150	656	108	385	578	2,583	8	21	—	—

TABLE 9—continued

Number of arrivals Number of days absent	WEST COAST											Ayr
	Total	Sornoway	Ullapool	Kyle	Oban	Campbeltown						
	cwt. £	cwt. £	cwt. £	cwt. £	cwt. £	cwt. £	cwt.	cwt.	cwt.	cwt.	cwt.	
	14,512 16,482	2 2	7,464 8,165	2 2	1,401 2,338	1,734 1,738						3,909 4,237
DEMERSAL FISH												
Brill	124	—	1	—	3	—	8	—	—	—	—	119
Catfish	26	—	25	—	—	—	—	—	—	—	—	1,149
Cod	57,067	2	29,506	4	3,070	—	—	—	—	—	—	5
Conger eels	94	—	126,345	—	—	—	—	—	—	—	—	73,061
Dabs	753	—	52	—	12	—	—	—	—	—	—	28
Dogfish	30,354	—	331	—	188	—	—	—	—	—	—	400
Flounders	360	—	27,642	—	1,367	—	—	—	—	—	—	1,119
Gurnards	22	—	14	—	—	—	—	—	—	—	—	153
Haddock	244,133	15	429,545	—	6	—	—	—	—	—	—	2
Hake	19,403	—	194,402	—	—	—	—	—	—	—	—	44,693
Halibut	19,403	—	28,048	—	—	—	—	—	—	—	—	67,830
Lemon sole	2,683	—	4,962	—	—	—	—	—	—	—	—	28
Ling	1,015	—	316	—	—	—	—	—	—	—	—	107
Lyche	342	—	1,953	—	—	—	—	—	—	—	—	10
Megrim	3,479	—	77	—	—	—	—	—	—	—	—	74
Monks	2,260	—	3,356	—	—	—	—	—	—	—	—	10
Plaice	11,191	—	15,915	—	—	—	—	—	—	—	—	561
Porbeagles	16	—	3,614	—	—	—	—	—	—	—	—	27,494
Redfish	7,565	—	2,276	—	—	—	—	—	—	—	—	3
Skate	8,001	—	4,710	—	—	—	—	—	—	—	—	4063
Torsk	141	—	15,222	—	—	—	—	—	—	—	—	2,889
Turbot	111,704	—	300	—	—	—	—	—	—	—	—	224
Whiting	2,006	—	97,348	—	—	—	—	—	—	—	—	46,943
Witches	2	—	2,738	—	—	—	—	—	—	—	—	1,973
Livers	1,936	—	704	—	—	—	—	—	—	—	—	—
Roes	2	—	3,751	—	—	—	—	—	—	—	—	—
Other	2	—	716	—	—	—	—	—	—	—	—	2,986
Total	505,026	27	333,685	70	77,660	23,177	152	299,492	73,131	70,411	277,478	
	397,397	8	691,861	32	85,475	20,273	1,542	328,510	58,030	66,498	237,694	
PELAGIC FISH												
Herring	700	—	—	—	—	—	—	—	—	—	—	608
Mackerel	160	—	100	—	—	—	—	—	—	—	—	19
Sparling	—	—	134	—	—	—	—	—	—	—	—	43
Sprats	—	—	—	—	—	—	—	—	—	—	—	—
Total	860	—	134	—	—	—	—	—	—	—	—	—
	782	—	403	—	—	—	—	—	—	—	—	956
	1,093	—	518	—	—	—	—	—	—	—	—	472
WET FISH	505,886	27	333,785	70	77,784	23,186	152	299,874	73,149	71,038	278,434	
	398,179	8	692,379	32	85,497	20,307	1,542	328,558	58,085	66,821	238,166	
Norway lobsters	1,601	—	74	—	—	—	—	—	—	—	—	9,616
Squids	452	—	109	—	—	—	—	—	—	—	—	33

TABLE 10
British great line vessels: Quantity and value of each species landed in each district

	ALL DISTRICTS				Aberdeen		Fraserburgh	
	1965		1964					
	1965	1964	1965	1964	1965	1964	1965	1964
Number of arrivals	623	729	232	160				
Number of days absent	4,449	5,049	3,740	187				
DEMERSAL FISH	cwt.	£	cwt.	£	cwt.	£	cwt.	£
Brill	—	2	—	—	—	—	—	—
Catfish	46	97	81	118	46	97	—	—
Cod	21,820	93,418	23,317	100,634	20,246	87,435	429	2,244
Conger eels	1,993	6,493	2,110	6,437	193	861	158	690
Dabs	2	5	—	1	2	5	—	—
Dogfish	502	1,135	313	625	289	612	7	20
Flounders	—	—	—	—	—	—	—	—
Gurnards	—	—	—	—	—	—	—	—
Haddock	1,242	6,444	801	4,277	1,188	6,312	17	51
Hake	552	9,543	976	16,179	54	848	83	1,433
Halibut	9,108	157,442	10,899	185,030	8,986	155,242	3	68
Lemon Sole	—	—	3	10	—	—	—	—
Ling	24,637	85,795	19,145	56,830	24,217	84,461	218	620
Lythe	15	39	21	58	12	34	1	3
Megrims	—	—	—	—	—	—	—	—
Monks	38	108	71	201	38	107	—	1
Plaice	—	—	—	—	—	—	—	—
Porbeagles	4	27	16	79	4	27	—	—
Redfish	155	267	155	276	148	237	7	30
Saithe	614	1,361	768	1,315	602	1,353	4	3
Skate	14,117	61,783	13,395	56,335	11,516	50,103	350	2,099
Torsk	22,654	72,584	21,497	60,406	22,648	72,568	—	—
Turbot	39	131	3	27	38	128	—	—
Whiting	11	32	14	34	8	25	—	—
Witches	1	4	4	13	1	4	—	—
Livers	650	708	1,475	1,153	650	708	—	—
Roes	521	1,799	420	2,208	504	1,718	2	9
Other	1	—	—	—	1	—	—	—
Total	1965	1964	1965	1964	1965	1964	1965	1964
	98,722	499,217	—	—	91,391	462,885	1,279	7,271
	—	—	†95,484	492,246	87,218	447,008	1,665	7,931

† 10 cwt. Mackerel valued at £19 was also landed.

TABLE 11
British vessels using small and hand lines: Quantity and value of each species landed in each district

	ALL SPECIES				Cod		Dabs		Dogfish	
	1965		1964							
	1965	1964	1965	1964	1965	1964	1965	1964	1965	1964
All Districts	1965	1964	1965	1964	1965	1964	1965	1964	1965	1964
	63,562	200,255	87,124	307,974	32,761	126,331	181	1,022	1,493	1,301
	—	—	—	—	52,099	214,724	246	1,378	3,892	2,882
Eyemouth	202	320	19	27	17	53	—	—	—	—
Leith	74	95	113	56	—	—	—	—	—	—
Anstruther	1,787	2,693	1,181	2,060	—	—	—	—	—	—
Arbroath	21,108	67,835	28,432	97,669	13,872	43,576	65	265	—	—
Aberdeen	1,795	5,008	1,695	6,511	1,515	4,749	—	—	—	—
Peterhead	1,411	6,649	2,488	11,159	1,169	5,488	9	26	—	—
Fraserburgh	16,871	60,735	19,712	83,877	9,660	42,120	107	731	—	—
Macduff	3,415	7,084	1,115	4,408	125	592	—	—	—	—
Buckie	2,448	7,964	2,650	11,120	1,061	4,690	—	—	—	—
Lossiemouth	4	4	1	3	—	—	—	—	—	—
Wick	7,281	27,753	18,709	72,661	5,053	24,050	—	—	—	—
Lerwick	2,810	3,172	5,002	4,352	97	284	—	—	1,466	1,239
Stornoway	2,651	7,532	2,400	6,789	8	24	—	—	—	—
Ullapool	264	472	2,316	4,702	55	205	—	—	20	38
Kyle	479	568	556	794	33	50	—	—	—	—
Oban	—	—	26	29	—	—	—	—	—	—
Campbeltown	485	1,127	276	653	16	67	—	—	7	24
Ayr	477	1,224	425	1,104	80	383	—	—	—	—

* In 1965 comprised:—

Catfish	48	93	Lemon Sole	1	4
Conger eels	8	12	Ling	6	13
Flounders	50	114	Monks	2	2
Halibut	30	501	Torsk	1	2

TABLE 10—continued

Ullapool		Kyle		Oban		Ayr		Other Districts		
9 24		74 226		20 69		54 90		74 113		
cwt.	£	cwt.	£	cwt.	£	cwt.	£	cwt.	£	
—	—	—	2	—	—	—	—	—	—	Brill
—	—	—	—	—	—	—	—	—	—	Catfish
106	370	273	857	144	473	433	1,398	189	641	Cod
29	117	371	1,140	116	437	980	2,810	146	438	Conger eels
—	—	—	—	—	—	—	—	—	—	Dabs
57	147	57	96	48	207	—	—	44	53	Dogfish
—	—	—	—	—	—	—	—	—	—	Flounders
—	—	—	—	—	—	—	—	—	—	Gurnards
35	78	—	—	1	1	—	—	1	2	Haddock
6	115	289	5,135	118	1,991	—	—	2	21	Hake
1	10	—	5	—	—	—	—	118	2,117	Halibut
—	—	—	—	—	—	—	—	—	—	Lemon sole
6	17	114	344	15	27	—	—	67	326	Ling
—	1	1	1	1	1	—	—	—	—	Lyche
—	—	—	—	—	—	—	—	—	—	Megrims
—	—	—	—	—	—	—	—	—	—	Monks
—	—	—	—	—	—	—	—	—	—	Plaice
—	—	—	—	—	—	—	—	—	—	Porbeagles
—	—	—	—	—	—	—	—	—	—	Redfish
2	3	—	—	1	1	—	—	5	1	Saithe
82	324	514	2,329	379	1,885	1,181	4,694	95	349	Skate
—	—	—	—	—	—	—	—	6	16	Torsk
1	3	3	7	—	—	—	—	—	—	Turbot
—	—	—	—	—	—	—	—	—	—	Whiting
—	—	—	—	—	—	—	—	—	—	Witches
—	—	12	55	3	17	—	—	—	—	Livers
—	—	—	—	—	—	—	—	—	—	Roes
—	—	—	—	—	—	—	—	—	—	Other
325	1,185	1,634	9,971	826	5,039	2,594	8,902	673	3,964	
949	3,779	2,198	18,161	901	5,558	2,378	8,243	175	1,566	

TABLE 11—continued

Haddock		Lyche		Plaice		Saithe		Skate		Whiting		Mackerel		Other* Species		
cwt.	£	cwt.	£	cwt.	£	cwt.	£	cwt.	£	cwt.	£	cwt.	£	cwt.	£	
10,699	35,896	90	102	179	1,228	1,408	1,544	24	37	537	1,185	15,926	30,549	264	1,060	
17,244	62,566	298	603	186	1,197	2,373	2,747	76	223	717	1,897	9,469	17,592	524	2,165	
—	—	—	—	—	—	9	5	—	—	—	—	176	261	—	1	Eymouth
—	—	—	—	—	—	—	—	—	—	—	—	74	95	—	—	Leith
—	—	—	—	—	—	—	—	—	—	—	—	1,787	2,693	—	—	Anstruther
6,537	22,441	—	—	57	268	7	6	—	—	432	993	—	—	138	286	Arbroath
45	134	—	—	2	6	150	54	—	—	4	7	72	45	7	13	Aberdeen
52	107	—	—	115	934	—	—	—	—	1	2	64	106	1	6	Peterhead
1,367	5,390	—	—	—	—	456	646	—	—	25	48	5,255	11,797	1	3	Fraserburgh
—	—	—	—	—	—	6	12	—	—	—	—	3,290	6,492	—	—	Macduff
—	—	—	—	—	—	—	—	—	—	—	—	1,381	3,262	—	—	Buckie
—	—	—	—	—	—	—	—	—	—	—	—	4	4	—	—	Lossiemouth
—	—	4	8	—	—	515	594	—	—	—	—	1,672	2,735	37	366	Wick
204	334	—	—	2	5	13	5	23	37	58	89	930	933	17	246	Lerwick
2,361	7,138	29	23	—	—	89	71	—	—	13	26	91	131	60	119	Stornoway
—	—	2	4	—	—	99	112	—	—	—	—	87	110	1	3	Ullapool
101	192	43	31	—	—	56	15	—	—	—	—	246	280	—	—	Kyle
—	—	—	—	—	—	—	—	—	—	—	—	—	—	—	—	Oban
32	160	12	36	3	15	—	—	1	—	4	20	422	840	—	1	Campbeltown
—	—	—	—	—	—	8	24	—	—	—	—	375	765	2	16	Ayr

Turbot cwt. £
 Roes 19 133
 Other Demersal 98 180

TABLE 12

British drifters: Quantity and value of each species landed in each district

	Number of arrivals	Number of days absent	All Species				Herring		Mackerel		Other Species	
			1965		1964		cwt.	£	cwt.	£	cwt.	£
			cwt.	£	cwt.	£						
ALL DISTRICTS	9,440 9,905	11,243 11,690	931,568 1,264,844	797,310 1,160,118	929,937 795,912	1,262,975 1,157,872	1,027 1,398	997 2,246	604 —	872 —	—	
East Coast: Total	3,941	5,678	427,573 670,242	303,012 561,650	426,765	669,100	208	292	600	850	—	
Eyemouth	—	—	—	784	—	—	—	—	—	—	—	
Leith	—	—	—	26	17	27	—	—	—	—	—	
Anstruther	—	—	—	—	—	—	—	—	—	—	—	
Arbroath	—	—	—	—	—	—	—	—	—	—	—	
Aberdeen	419	1,336	70,369 152,417	94,105 184,135	70,181 152,137	38,029	280	188	—	—	—	
Peterhead	343	417	25,072 38,029	24,009 44,048	25,072 38,029	352,332	—	—	—	—	—	
Fraserburgh	2,158	2,889	180,644 353,194	172,248 314,127	180,924	—	—	—	—	—	—	
Macduff	—	—	—	—	—	—	—	—	—	—	—	
Buckie	87	102	7,676 17,770	5,988 12,472	7,676 17,770	—	—	—	—	—	—	
Lossiemouth	898	898	143,119 107,366	5,582 5,750	143,119 107,366	—	—	—	—	—	—	
Wick	35	35	676 1,439	270 358	676 1,439	—	—	—	—	—	—	
Orkney and Shetland												
Lerwick	1,887	1,887	122,584 182,355	97,768 123,752	121,761	181,628	819	705	4	22	—	
West Coast: Total	3,612	3,678	381,411 412,247	396,530 474,743	381,411	412,247	—	—	—	—	—	
Stornoway	526	526	41,165 24,168	32,402 20,856	41,165	24,168	—	—	—	—	—	
Ullapool	2,338	2,338	239,013 258,746	305,291 345,108	239,013	258,746	—	—	—	—	—	
Kyle	248	290	21,828 37,975	43,752 86,327	21,828	37,975	—	—	—	—	—	
Oban	337	361	69,209 82,779	7,984 12,141	69,209	82,779	—	—	—	—	—	
Campbeltown	—	—	—	—	—	—	—	—	—	—	—	
Ayr	163	163	10,196 8,579	7,101 10,311	10,196	8,579	—	—	—	—	—	

TABLE 13

British ringers: Quantity and value of each species landed in each district

	Number of arrivals	Number of days absent	All Species				Herring	Mackerel	Sprats		Other Species			
			1965		1964				cwt.	£	cwt.	£	cwt.	£
			cwt.	£	cwt.	£								
ALL DISTRICTS	8,817 10,270	9,063 11,221	740,692 —	1,022,497 —	995,253 845,614	— —	1,001,184 780,500	1,616 4,116	1,789 2,948	49,304 223,293	18,535 61,865	3,066 1,014	989 301	
East Coast:														
Total	206	206	36,958	16,846	207,859	66,064	1,169	2,809	—	35,789	14,037	—	—	
Leith	2	2	392	117	116,750	32,111	—	—	—	392	117	—	—	
Arbroath	—	—	—	—	902	299	—	—	—	—	—	—	—	
Fraserburgh	4	4	406	933	1,313	2,800	406	933	—	—	—	—	—	
Buckie	10	10	763	1,876	11	19	763	1,876	—	—	—	—	—	
Lossiemouth	190	190	35,397	13,920	88,883	30,835	—	—	—	35,397	13,920	—	—	
West Coast:														
Total	8,611	8,857	703,734	1,005,651	787,394	779,550	685,537	998,375	1,616	13,515	4,498	3,066	989	
Scornoway	178	178	13,212	9,953	26,327	21,502	13,212	9,953	—	—	—	—	—	
Ullapool	140	140	16,916	20,193	47,679	51,460	16,916	20,193	—	—	—	—	—	
Kyle	1,355	1,600	214,950	295,862	243,761	258,973	214,950	295,862	—	—	—	—	—	
Oban	596	597	148,166	208,529	151,594	175,049	148,071	208,392	—	—	—	95	137	
Campbeltown	4,185	4,185	133,371	262,732	171,480	146,360	124,492	259,383	535	6,674	2,325	1,670	585	
Ayr	2,157	2,157	177,119	208,382	146,553	126,206	167,896	204,592	1,081	6,841	2,173	1,301	267	

TABLE 14

British vessels trawling for Norway Lobsters: Quantity and value of each species landed in each district

	ALL DISTRICTS						Ayr	Campbeltown	Kyle	Stornoway	Buckle	Anstruther	Leith	1964	1965	1966	Other Districts	
	1965		1966		1967													
	cwt.	£	cwt.	£	cwt.	£												
Number of arrivals	15,626	14,965	14,965	1,539	1,228	1,044	1,924	1,524	1,044	2,029	1,228	1,539	1,539	1,539	1,539	2,806		
Number of days absent	17,767	16,347	16,347	1,539	1,239	1,083	1,934	1,934	1,083	2,490	1,239	1,539	1,539	1,539	1,539	3,542		
Norway lobsters	83,108	704,490	72,356	534,178	6,420	45,546	10,157	76,271	4,220	39,346	14,221	133,217	14,221	133,217	20,459	189,988	17,580	147,900
WET FISH																		
Cod	12,818	41,890	11,337	41,040	708	1,812	720	3,006	488	1,331	1,880	5,029	1,880	5,029	4,707	17,751	1,652	6,036
Conger eels	669	1,133	732	1,308	—	—	—	—	266	558	120	223	120	223	130	167	56	77
Dabs	265	634	179	407	31	88	40	77	1	2	1	—	1	—	23	31	100	245
Haddock	4,577	9,950	9,664	19,552	53	218	1,163	2,152	329	465	936	1,244	936	1,244	709	2,939	1,205	2,288
Hake	5,986	63,964	7,372	85,501	—	3	1,854	27,662	20	53	702	5,384	702	5,384	2,063	20,316	401	3,597
Lemon sole	361	3,004	722	5,331	12	100	120	919	7	37	35	167	35	167	27	315	80	629
Megrims	500	1,759	628	1,822	—	—	198	871	44	114	110	237	110	237	1	4	146	532
Monks	4,753	12,999	4,880	13,102	24	40	1,461	5,889	75	101	1,657	3,584	1,657	3,584	452	669	812	2,175
Plaice	2,338	10,075	1,822	6,982	309	980	214	925	39	180	58	291	58	291	734	3,977	288	1,243
Skate	4,273	14,586	3,588	12,439	6	15	738	2,048	35	82	1,281	4,317	1,281	4,317	339	939	1,440	5,570
Whiting	15,039	21,689	14,856	23,617	432	661	4,633	4,230	1,412	1,066	922	392	922	392	3,148	7,330	2,349	3,576
Witches	1,350	3,766	1,257	3,759	—	—	172	544	12	30	455	993	455	993	292	989	328	911
Mackerel	420	714	384	602	114	116	87	9	—	—	1	—	1	—	192	415	18	30
Other	5,157	12,507	4,110	12,833	3	52	275	1,933	1,014	4,425	209	442	209	442	2,266	3,716	486	1,138
Total	58,506	198,670	61,731	228,295	1,692	4,085	11,596	50,266	3,742	8,444	8,367	22,303	8,367	22,303	15,083	59,558	9,361	28,047
Total of all fish	141,614	903,160	—	—	8,112	49,631	126,537	7,962	47,790	155,520	22,588	155,520	22,588	155,520	35,542	249,546	26,941	175,947
	—	—	134,087	762,473	7,795	41,641	166,278	13,433	84,277	14,289	95,106	8,045	43,190	31,850	185,988	21,112	117,418	

TABLE 15

British vessels using white fish nets other than trawl and seine: Quantity and value of each species landed in each district

	ALL SPECIES		Cod		Dogfish		Haddock		Hake		Lythe		Plaice		Saithe		Skate		Whiting		Sprats		Other* Species				
	1965		1964		£		cwt.		£		cwt.		£		cwt.		£		cwt.		£		cwt.		£		
	cwt.	£	cwt.	£	cwt.	£	cwt.	£	cwt.	£	cwt.	£	cwt.	£	cwt.	£	cwt.	£	cwt.	£	cwt.	£	cwt.	£	cwt.	£	
All Districts	39,787	62,419	27,399	42,111	7,667	32,347	2,211	5,275	139	390	280	3,761	1,560	4,914	30	180	1,836	2,410	252	1,025	89	210	24,629	8,763	1,094	3,144	
1965					4,745	19,822	2,074	4,871	86	297	541	6,725	986	3,199	17	123	959	1,574	59	136	55	176	17,491	3,745	386	1,443	
1964																											
Leith	20,418	5,190	17,428	3,393																			20,418	5,190			
Anstruther	2,308	3,046	1,174	1,014																			2,242	2,691	66	355	
Arbroath	7,492	24,626	1,707	7,241	4,672	21,517	4	3	36	113				9	26	59	87			49	93	1,969	882	694	1,905		
Aberdeen			30	160																							
Macduff			276	1,256																							
Wick	1,106	4,467	695	3,355	872	3,831																					
Lillapool	4,357	13,749	4,114	14,176	1,741	6,049	40	74	102	275	168	1,558	4	3,959	17	137	860	1,190	6	22	19	58					
Kyle	3,886	10,472	2,975	11,516	1,382	950	2,167	5,198	1	2	112	2,203	391	947	4	17	720	766	37	141	21	59					
Ayr	210	889																	209	862							

* In 1965 includes:—

Brill	cwt.	£	Magrims	cwt.	£	Roes	cwt.	£
Conger Eels	1	7	Monks	3	12	Other	245	1,294
Dabs	11	34	Porbeagles	4	11	Herring	557	989
Ling	2	9	Turbot	19	99	Sparring	155	242
	30	88		1	4		66	355

TABLE 16

British vessels: Landings according to methods of fishing—1938 and 1954 to 1965

Year	Trawl		Great Lines		Small and Hand Lines		Seine		Drift		Ring		Other*	
	cwt.	£	cwt.	£	cwt.	£	cwt.	£	cwt.	£	cwt.	£	cwt.	£
1938	2,023,831	2,086,734	180,344	203,131	175,313	151,032	259,159	347,828	2,118,650	823,466	595,418	198,830	...	95,503
1954	1,842,328	4,908,917	155,755	527,961	77,648	192,683	1,198,731	3,250,428	2,024,372	1,864,035	670,814	476,995	...	392,366
1955	1,833,573	4,582,168	126,704	441,145	92,508	215,364	1,530,496	3,792,368	1,944,535	1,708,051	606,651	438,933	...	486,944
1956	1,898,068	4,938,711	33,013	474,115	82,163	206,525	1,649,240	4,366,607	1,478,064	1,459,075	492,167	426,754	...	527,796
1957	1,978,216	5,362,158	160,471	574,978	104,705	245,114	1,901,243	4,986,552	1,310,265	1,294,298	422,625	367,917	...	603,795
1958	1,971,716	5,781,651	171,478	607,562	101,682	262,314	1,853,811	5,338,365	1,286,757	1,436,267	433,069	418,853	...	700,849
1959	1,789,342	5,835,227	159,135	601,926	109,551	260,343	1,674,485	5,342,458	1,654,962	1,680,071	644,138	535,703	...	854,911
1960	1,486,163	5,343,460	186,370	721,947	115,623	335,609	1,608,341	5,451,058	1,230,830	1,230,830	744,910	651,983	...	1,009,780
1961	1,580,116	5,449,723	184,815	756,403	102,412	311,035	1,522,644	5,199,591	1,074,128	1,307,000	611,693	641,815	...	1,215,542
1962	1,598,066	5,485,477	138,065	571,778	98,106	249,365	1,585,537	5,184,172	1,324,037	1,307,000	759,610	824,967	...	1,463,206
1963	1,723,778	5,860,004	96,108	429,796	112,182	324,731	1,780,710	5,908,525	963,413	1,324,037	1,116,195	677,674	...	1,543,793
1964	2,154,833	6,783,225	95,494	492,265	87,124	307,974	2,017,348	6,102,808	797,310	1,160,118	995,253	845,614	...	1,859,547
1965	2,814,044	7,096,255	98,722	499,217	63,562	200,255	2,604,544	7,163,372	931,568	1,264,844	740,692	1,022,497	...	1,917,648
Principal species landed in 1965:														
Cod	502,796	2,236,340	21,820	93,418	32,761	126,331	350,921	1,383,212	—	—	—	4	20,485	74,237
Haddock	790,791	2,384,475	1,242	6,444	10,699	35,896	1,289,668	3,013,998	—	—	—	—	4,716	10,340
Halibut	11,705	163,885	9,108	157,442	30	501	2,321	40,345	—	—	—	—	140	2,005
Lemon sole	28,192	282,138	—	—	1	4	28,573	295,314	—	—	—	—	361	3,004
Platice	27,496	210,387	—	—	179	1,228	91,210	541,644	—	—	—	—	2,368	10,255
Skate	43,770	158,432	14,117	61,783	24	37	38,728	144,654	—	—	—	—	4,525	15,611
Whiting	146,591	321,513	11	32	537	1,185	631,436	1,124,457	—	—	—	—	15,128	21,899
Herring	9,751	10,713	—	—	—	—	896	1,627	929,937	1,262,975	686,706	1,001,184	190	304

* White fish nets other than trawl and seine, Norway lobster trawl, and all shell fish.

TABLE 17

Herring fishing: Seasonal landings

District	1965 1964	Winter (1st Jan. to 31st March)		Summer (1st April to 30th Sept.)		Autumn (1st Oct. to 31st Dec.)	
		cwt. 486,432 360,692	£ 440,190 336,892	cwt. 604,962 718,760	£ 1,057,076 1,058,105	cwt. 536,085 499,203	£ 779,537 563,496
East Coast:							
Total		6,591	7,148	290,474	569,900	138,617	102,173
Eyemouth		—	—	—	1	—	—
Leith		281	365	27	50	5	12
Anstruther		—	—	17	27	—	—
Arbroath		—	—	181	388	—	—
Aberdeen		409	1,169	70,072	151,845	403	581
Peterhead		105	94	24,904	37,883	63	52
Fraserburgh		1,232	760	179,018	352,406	916	597
Macduff		—	—	—	—	—	—
Buckie		455	570	8,575	20,367	3,852	2,694
Lossiemouth		4,109	4,190	7,004	5,494	133,378	98,237
Wick		—	—	676	1,439	—	—
Lerwick		—	—	121,541	181,547	220	81
West Coast:							
Total		479,841	433,042	192,947	305,629	397,248	677,283
Stornoway		35,808	16,124	6,370	12,194	12,199	5,803
Ullapool		131,281	104,456	15,736	27,831	109,067	146,894
Kyle		86,295	70,322	29,503	44,377	120,979	219,138
Oban		114,233	117,142	74	265	104,402	176,164
Campbeltown		23,506	24,624	60,083	117,722	40,904	117,039
Ayr		88,718	100,374	81,181	103,240	9,697	12,245

TABLE 18

British vessels: Quantity of each species landed from each fishing region, by method of

		NORTH SEA						
		Total	Trawl		Seine	Great Lines	Small and Hand Lines	Other Methods
			Steam	*Motor	Motor	Motor	Motor	Motor
Number of arrivals	1965 1964		39 117	12,548 7,163	64,355 62,449	230 331	12,555 16,112	14,299 13,988
Number of hours fishing	1965 1964		2,964 4,941	251,626 217,683	583,218 639,891	3,639 6,574
Number of days absent	1965 1964		247 393	25,314 19,461	77,799 81,069	511 770	12,589 16,164	16,486 16,238
DEMERSAL FISH		cwt.	cwt.	cwt.	cwt.	cwt.	cwt.	cwt.
Brill		81	1	18	60	—	—	2
Catfish		3,610	5	1,463	2,065	15	48	14
Cod		495,555	2,756	158,450	289,946	3,325	32,558	8,520
Conger eels		241	3	73	24	132	8	1
Dabs		8,587	15	2,062	6,133	—	181	196
Dogfish		21,809	476	9,698	9,438	124	1,466	607
Flounders		272	—	—	271	—	—	1
Gurnards		599	20	439	120	—	—	20
Haddock		1,424,977	6,263	400,546	1,008,301	66	8,205	1,596
Hake		17,351	19	7,754	7,675	14	—	1,889
Halibut		4,236	32	1,669	1,965	420	30	120
Lemon sole		41,097	91	15,170	25,604	—	1	231
Ling		5,555	30	2,725	1,854	899	6	41
Lythe		1,478	5	1,089	362	11	2	9
Megrimms		6,829	28	1,638	4,963	—	—	200
Monks		44,975	154	22,216	20,849	—	2	1,754
Plaice		96,807	197	17,087	77,966	—	176	1,381
Porbeagles		98	3	23	53	1	—	18
Redfish		66	1	58	—	7	—	—
Saithe		52,462	868	46,143	3,603	372	1,156	320
Skate		56,557	286	26,665	27,331	1,212	23	1,040
Torsk		991	3	60	13	914	1	—
Turbot		10,205	16	9,370	788	—	1	30
Whiting		620,375	923	94,751	517,789	—	520	6,392
Witches		13,383	29	2,015	11,142	—	—	197
Livers		40,187	516	38,684	951	36	—	—
Roes		9,775	62	2,399	7,102	30	16	166
Other		1,676	—	925	106	—	88	557
Total	1965 1964	2,979,834 2,526,071	12,802 17,123	863,190 840,188	2,026,474 1,557,958	7,578 11,854	44,488 67,740	25,302 31,208
Total Value (£)	1965 1964	8,812,647 7,798,570	43,039 53,950	2,937,763 2,718,295	5,537,351 4,603,817	35,206 51,464	160,851 251,130	98,437 119,914
PELAGIC FISH								
Herring		553,205	—	6,963	195	—	—	546,047
Mackerel		20,053	40	4,688	1,000	—	13,086	1,239
Sparling		66	—	—	—	—	—	66
Sprats		917,169	—	835,464	21,287	—	—	60,418
Total	1965 1964	1,490,493 825,326	40 92	847,115 197,198	22,482 2,001	— —	13,086 7,879	607,770 618,156
Total Value (£)	1965 1964	1,258,802 850,349	74 95	348,959 86,074	10,732 3,289	— —	25,810 15,340	873,227 745,551
WET FISH								
	1965 1964	4,470,327 3,351,397	12,842 17,215	1,710,305 1,037,386	2,048,956 1,559,959	7,578 11,854	57,574 75,619	633,072 649,364
Total Value (£)	1965 1964	10,071,449 8,648,919	43,113 54,045	3,286,722 2,804,369	5,548,083 4,607,106	35,206 51,464	186,661 266,470	971,664 865,465
Norway lobsters		41,015	—	5,355	5,851	—	—	29,809
Squids		1,411	—	166	1,196	—	—	49
Total Value (£)	1965	314,830	—	44,026	49,144	—	—	221,660

* Includes for 1965, 5,764 arrivals, 5,797 days absent and 23,453 hours fishing by vessels using two-boat pelagic trawl landing 839,974 cwt.

TABLE 18—continued

capture; showing total values and fishing effort involved

WEST OF SCOTLAND							
Total	Trawl		Seine	Great Lines	Small and Hand Lines	Other Methods	
	Steam	‡Motor					Motor
	21	4,024	15,902	136	1,276	22,144	
	25	4,145	16,549	136	2,784	22,620	
	2,451	110,851	153,162	4,371	—	—	
	2,538	119,261	181,457	6,037	—	—	
	183	10,551	18,217	387	1,276	24,155	
	204	11,505	20,189	460	2,796	24,498	
cwt.	cwt.	cwt.	cwt.	cwt.	cwt.	cwt.	
227	—	46	112	—	—	69	Brill
136	—	110	26	—	—	—	Catfish
189,105	2,954	112,420	60,812	828	125	11,966	Cod
1,832	9	344	96	705	—	678	Conger eels
1,752	14	613	1,055	—	—	70	Dabs
49,322	219	14,923	30,105	168	27	3,880	Dogfish
472	—	2	376	—	50	44	Flounders
818	29	767	19	—	—	3	Gurnards
484,510	4,168	193,654	281,037	36	2,494	3,121	Haddock
29,301	6	4,962	19,460	496	—	4,377	Hake
1,429	33	1,016	356	4	—	20	Halibut
5,853	84	2,706	2,933	—	—	130	Lemon sole
5,419	51	3,177	1,022	203	—	966	Ling
5,235	70	2,872	345	3	76	1,869	Lythe
5,729	29	1,750	3,646	—	—	304	Megrims
10,111	74	4,580	2,453	—	—	3,004	Monks
19,083	180	5,298	12,615	—	3	987	Plaice
36	—	7	16	—	—	13	Porbeagles
14	—	14	—	—	—	—	Redfish
66,997	1,890	50,791	7,757	7	244	6,308	Saithe
27,170	300	11,402	11,124	1,057	1	3,286	Skate
44	—	37	4	—	—	3	Torsk
640	11	432	135	—	—	62	Turbot
168,411	349	46,539	112,767	3	17	8,736	Whiting
4,124	1	962	2,007	—	—	1,154	Witches
10,948	306	10,639	2	—	—	1	Livers
4,916	152	2,655	1,989	17	1	102	Roes
179	1	162	2	—	10	4	Other
1,093,813	10,930	472,880	552,271	3,527	3,048	51,157	
995,055	12,133	474,033	454,039	4,358	9,639	40,853	
3,242,110	31,576	1,425,644	1,602,721	20,225	8,399	153,545	
3,329,699	40,761	1,594,787	1,481,264	28,904	38,363	145,620	
1,060,996	9	2,696	700	—	—	1,057,591	Herring
8,186	13	3,357	167	—	2,824	1,825	Mackerel
—	—	—	—	—	—	—	Sparling
13,515	—	—	—	—	—	13,515	Sprats
1,082,697	22	6,053	867	—	2,824	1,072,931	
1,200,908	105	7,135	849	10	1,539	1,191,270	
1,427,752	31	10,611	1,503	—	4,708	1,410,899	
1,278,360	131	10,034	1,173	19	2,152	1,264,851	
2,176,510	10,952	478,933	553,138	3,527	5,872	1,124,088	
2,195,963	12,238	481,168	454,888	4,368	11,178	1,232,123	
4,669,862	31,607	1,436,255	1,604,224	20,225	13,107	1,564,444	
4,608,059	40,892	1,604,821	1,482,437	28,923	40,515	1,410,471	
60,543	—	5,646	1,598	—	—	53,299	Norway Lobsters
475	—	11	454	—	—	10	Squids
556,794	—	55,395	15,860	—	—	485,539	

‡ Includes for 1965, 11 arrivals, 17 days absent, 11 hours fishing by vessels using two-boat pelagic trawl landing 1,337 cwt.

TABLE 18—continued

		IRISH SEA					
		Total	Trawl	Seine	Great Lines	Small and Hand Lines	Other Methods
			Motor	Motor	Motor	Motor	Motor
Number of arrivals	1965 1964	401 413	145 172	54 48	66 125	87 2	
Number of hours fishing	1965 1964	2,446 669	1,828 2,437	900 1,060	
Number of days absent	1965 1964	532 479	197 274	90 93	66 125	87 5	
DEMERSAL FISH		cwt.	cwt.	cwt.	cwt.	cwt.	
Brill		43	30	12	—	1	
Catfish		—	—	—	—	—	
Cod		1,211	536	164	433	78	
Conger eels		1,019	39	—	980	—	
Dabs		12	2	10	—	—	
Dogfish		67	66	1	—	—	
Flounders		316	311	5	—	—	
Gurnards		13	3	10	—	—	
Haddock		554	224	330	—	—	
Hake		460	434	26	—	—	
Halibut		—	—	—	—	—	
Lemon sole		69	33	36	—	—	
Ling		2	2	—	—	—	
Lythe		15	1	2	—	12	
Megrims		4	4	—	—	—	
Monks		92	80	12	—	—	
Plaice		1,085	457	628	—	—	
Porbeagles		—	—	—	—	—	
Redfish		—	—	—	—	—	
Saithe		106	62	36	—	8	
Skate		2,316	664	273	1,181	198	
Torsk		—	—	—	—	—	
Turbot		23	12	11	—	—	
Whiting		1,440	560	880	—	—	
Witches		23	10	13	—	—	
Livers		—	—	—	—	—	
Roes		3	—	1	—	2	
Other		112	112	—	—	—	
Total	1965 1964	8,985 6,889	3,642 1,807	2,450 2,498	2,594 2,305	100 276	199 3
Total Value (£)	1965 1964	39,165 29,024	17,910 6,868	11,065 13,262	8,902 7,991	456 889	832 14
PELAGIC FISH							
Herring		13,196	1	—	—	13,195	
Mackerel		17	1	—	16	—	
Sparling		—	—	—	—	—	
Sprats		—	—	—	—	—	
Total	1965 1964	13,213 716	2 460	— 3	— —	16 50	13,195 203
Total Value (£)	1965 1964	11,525 1,131	4 840	— 3	— —	31 100	11,490 188
WET FISH							
	1965 1964	22,198 7,605	3,644 2,267	2,450 2,501	2,594 2,305	116 326	13,394 206
Total Value (£)	1965 1964	50,690 30,155	17,914 7,708	11,065 13,265	8,902 7,991	487 989	12,322 202
Norway lobsters		327	324	3	—	—	
Squids		1	1	—	—	—	
Total Value (£)	1965	5,902	5,877	25	—	—	

TABLE 18—continued

FAROE				
Total	Trawl		Great Lines	
	Steam	Motor	Motor	
	44	460	139	
	62	486	152	
	6,100	61,800	28,856	
	7,917	67,357	26,894	
	587	5,670	2,340	
	779	6,271	2,537	
cwt.	cwt.	cwt.	cwt.	
1	—	1	—	Brill
723	57	666	—	Catfish
129,062	9,979	104,952	14,131	Cod
29	—	8	21	Conger eels
615	66	547	2	Dabs
1,378	143	1,172	63	Dogfish
—	—	—	—	Flounders
59	20	39	—	Gurnards
111,164	8,966	101,282	916	Haddock
189	18	129	42	Hake
12,683	493	6,227	5,963	Halibut
6,887	631	6,256	—	Lemon sole
11,455	132	2,000	9,323	Ling
49	3	46	—	Lythe
283	29	254	—	Megrims
5,355	510	4,819	26	Monks
2,507	264	2,243	—	Plaice
28	3	23	2	Porbeagles
475	33	442	—	Redfish
62,237	5,096	57,008	133	Saithe
5,021	115	1,233	3,673	Skate
15,155	52	411	14,692	Torsk
52	1	13	38	Turbot
1,708	318	1,390	—	Whiting
79	3	76	—	Witches
10,725	1,118	9,512	95	Livers
1,706	132	1,283	291	Roes
122	—	122	—	Other
379,747	28,182	302,154	49,411	
383,481	35,981	299,012	48,488	
1,545,145	102,719	1,167,796	274,630	
1,543,231	125,470	1,133,282	284,479	
18	18	—	—	Herring
137	17	120	—	Mackerel
—	—	—	—	Sparling
—	—	—	—	Sprats
155	35	120	—	
477	—	477	—	
262	27	235	—	
1,112	—	1,112	—	
379,902	28,217	302,274	49,411	
383,958	35,981	299,489	48,488	
1,545,407	102,746	1,168,031	274,630	
1,544,343	125,470	1,134,394	284,479	
—	—	—	—	Norway lobsters
88	8	80	—	Squids
60	7	53	—	

TABLE 18—continued

		ROCKALL			NORWEGIAN COAST
		Total	Trawl	Great Lines	Trawl
			Motor	Motor	Motor
Number of arrivals	1965 1964		30 80	42 32	2 —
Number of hours fishing	1965 1964		3,603 9,321	8,258 5,789	255 —
Number of days absent	1965 1964		338 882	669 511	32 —
DEMERSAL FISH		cwt.	cwt.	cwt.	cwt.
Brill		—	—	—	—
Catfish		78	78	—	16
Cod		1,189	803	386	1,438
Conger eels		157	1	156	—
Dabs		297	297	—	—
Dogfish		658	548	110	—
Flounders		—	—	—	—
Gurnards		3	3	—	—
Haddock		9,586	9,565	21	541
Hake		32	32	—	—
Halibut		1,460	268	1,192	6
Lemon sole		72	72	—	—
Ling		13,414	1,637	11,777	4
Lythe		29	28	1	—
Megrims		331	331	—	2
Monks		362	350	12	—
Plaice		11	11	—	—
Porbeagles		2	—	2	—
Redfish		—	—	—	194
Saithe		1,191	1,190	1	92
Skate		7,656	1,802	5,854	6
Torsk		3,931	354	3,577	29
Turbot		30	30	—	—
Whiting		79	79	—	—
Witches		1	—	1	—
Livers		504	—	504	144
Roes		175	5	170	—
Other		24	23	1	2
Total	1965 1964	41,272 59,095	17,507 44,570	23,765 14,525	2,474 —
Total Value (£)	1965 1964	164,066 208,951	64,410 154,445	99,656 54,506	7,837 —
PELAGIC FISH					
Herring		44	44	—	—
Mackerel		186	186	—	—
Sparling		—	—	—	—
Sprats		—	—	—	—
Total	1965 1964	230 534	230 534	— —	— —
Total Value (£)	1965 1964	523 636	523 636	— —	— —
WET FISH	1965 1964	41,502 59,629	17,737 45,104	23,765 14,525	2,474 —
Total Value (£)	1965 1964	164,589 209,587	64,933 155,081	99,656 54,506	7,837 —
Norway lobsters		—	—	—	—
Squids		—	—	—	—
Total Value (£)	1965	—	—	—	—

TABLE 18—continued

ICELAND				
Total	Trawl		Great Lines	
	Steam	Motor	Motor	
	29 49	291 245	22 28	
	4,027 7,070	45,228 37,161	4,787 5,901	
	418 705	4,251 3,622	452 620	
cwt.	cwt.	cwt.	cwt.	
7,650	657	6,962	31	Brill
111,224	10,160	98,348	2,716	Catfish
2	—	2	—	Cod
900	68	832	—	Conger eels
378	44	298	36	Dabs
—	—	—	—	Dogfish
6	—	6	—	Flounders
65,785	6,915	58,667	203	Gurnards
66	1	65	—	Haddock
3,491	189	1,772	1,530	Hake
3,149	234	2,915	—	Halibut
4,118	85	1,598	2,435	Lemon sole
1	—	1	—	Ling
508	23	485	—	Lythe
1,043	100	942	1	Megrims
1,760	51	1,709	—	Monks
2	—	2	—	Plaice
10,822	421	10,254	147	Porbeagles
22,387	1,307	20,979	101	Redfish
2,437	85	1,212	1,140	Saithe
4,235	68	697	3,470	Skate
3	—	3	—	Torsk
1,690	58	1,624	8	Turbot
400	62	338	—	Whiting
12,450	1,215	11,220	15	Witches
411	39	358	14	Livers
3,569	—	3,569	—	Roes
				Other
258,487	21,782	224,858	11,847	
237,015	35,789	188,166	13,060	
997,655	85,395	851,662	60,598	
918,772	138,167	718,174	62,431	
20	—	20	—	Herring
5	—	5	—	Mackerel
—	—	—	—	Sparling
—	—	—	—	Sprats
25	—	25	—	
31	1	30	—	
40	—	40	—	
104	2	102	—	
258,512	21,782	224,883	11,847	
237,046	35,790	188,196	13,060	
997,695	85,395	851,702	60,598	
918,876	138,169	718,276	62,431	
—	—	—	—	Norway lobsters
27	—	27	—	Squids
60	—	60	—	

TABLE 19

Foreign vessels: Quantity of each species landed from each fishing region

	ALL REGIONS																
	Total						Trawl.			Seine		Lines		Purse Seine			
	1965		1964		1964		cwt.	£	cwt.	£	cwt.	£	cwt.	£	cwt.	£	
DEMERSAL FISH																	
Brill			2		12												
Castfish	137	261	357	1	605												
Cod	21,487	89,678	41,459	41,459	169,834	3,147	13,041	3,147	13,041	6	13	18,473	76,296	20	53		
Conger eels	4	21	11	43	2	3	8	1	2	1	1	4	21	4	21		
Dabs	1,048	1,673	2,585	3,819	3,819	159	237	159	237			889	1,436				
Dogfish			5	29	33	10	3										
Floamers	11	19,383	77,392	30,206	144,859	5,740	14,305	186	706			13,457	62,381				
Gurnards	37	37	353	152	1,224	72	37					773	12,234			19	
Haddock	847	13,191	144	912	14,084	859	4,999	38	19								
Halibut	1,958	4,876	6,271	3,964	11,118	167	439	6	16			1,785	5,816				
Ling	86	325	80	101	307	83	314	3	11								
Lythe	23	302	957	483	1,607	23	80					41	140				
Megrimms	302	3,309	2,227	2,227	12,752	377	2,284	156	1,024								
Plaice	534	4	24	19	63	4	4										
Porbeagles	26	33	33	265	365	7	9					19	24				
Redfish	1,101	1,716	1,400	1,400	1,835	1,078	1,682					23	34				
Saithe	471	1,862	1,244	1,244	4,179	98	432					360	1,362				
Skate	4,648	11,431	9,537	9,537	23,238	4	4					4,644	11,419				
Torsk		80	80	16	136	6	47										
Turbot	1,395	8	299	1,873	6,003	1,275	3,063	78	293			42	138				
Whiting	83	218	218	218	786	52	222										
Livers	86	103	103	562	1,424	39	10					47	93				
Roes	4	56	56	52	17	2	55					2	1				
Other																	
Total	54,764	217,601	217,601	97,476	399,979	13,604	43,133	579	2,999	40,580	171,450	83,071	344,423	40,580	171,450	19	
PELAGIC FISH																	
Herring	61,480	103,967	65,965	65,965	141,443	37,007	87,412										
Mackerel	8,663	23,181	7,687	7,687	17,681	8,663	23,181										
Sprattling				301	90												
Sprats																	
Total	70,063	127,148	73,953	73,953	159,214	45,670	110,593	—	—	—	—	—	—	—	—	24,393	16,555
WET FISH																	
Shrimps	48	225	225	1	2	48	255										
Norway lobsters				5	42												
Squids																	
Others																	
Total	124,827	344,749	171,429	171,429	559,193	85,647	199,667	579	2,999	40,580	171,450	83,071	344,423	40,580	171,450	24,394	16,574

TABLE 19—continued

	North Sea				Faroe		Iceland		Other Regions	
	Trawl	Seine	Lines	Purse Seine	Lines	Trawl	Trawl	Lines	Purse Seine	Lines
	cwt.	cwt.	cwt.	cwt.	cwt.	cwt.	cwt.	cwt.	cwt.	cwt.
DEMERSAL FISH										
Brill	59				5			15		
Carfish	2,907	6			17,743	52		730		
Cod		67				240				
Conger eels	3	1								
Dabs	159		502		49					338
Dogfish										
Flounders	10									
Gurnards	4,256	186			11,963	1,484		1,494		
Haddock	37									
Hake	19	1			712	53		49		12
Halibut	36	38				823				
Lemon sole	105	6			914	62		871		
Ling	83									
Lytte										
Megrim	227	10			38	23				
Monks	79	156			1	24		3		
Plaice	4					298				
Porbeagles										
Redfish	1,045					7		6		
Saithe	97					33		3		
Skate	4	13			20	7		53		
Torsk	6	2			307	3		2,279		
Turbot	1,272	78			2,365	1				
Whiting	49	11				3		39		
Witches						3				
Livers	39									
Roes	2					47				
Other						2				
Total 1965	10,498	579	502		34,186	3,106		5,542	1	350
1964	10,104	2,711	2,201		66,239	1,590		14,475		156
PELAGIC FISH										
Herring	37,007			22,156					2,237	
Mackerel	8,663									
Sparling										
Sprats										
Total 1965	45,670			22,156					2,237	
1964	73,953									
WET FISH										
1965	56,168	579	502	22,156	34,186	3,106		5,542	2,238	350
1964	84,057	2,711	2,201		66,239	1,590		14,475		156
Shrimps	48									
Norway lobsters										
Squids										
Others										

TABLE 20

Foreign vessels: Quantity and value of fish* landed by each nationality

Nationality	Method of capture	Arrivals	Hours Fishing	Days Absent	Port of Landing	North Sea	Faroe	Iceland	West of Scotland	Rockall	Newfoundland
						cwt. £	cwt. £	cwt. £	cwt. £	cwt. £	cwt. £
DANISH	Trawl—White Fish	34	1,124	142	Aberdeen	2,840	8,668	—	—	—	—
"	Trawl—White Fish	2	24	4	Peterhead	66	163	—	—	—	—
"	Trawl—Herring	49	1,345	226	Aberdeen	14,250	35,014	—	—	—	—
"	Trawl—Herring	1	—	—	Peterhead	66	163	—	—	—	—
"	Pair Trawl—Herring	2	16	6	Aberdeen	1,155	1,948	—	—	—	—
"	Trawl—Shrimps	5	108	26	Peterhead	84	305	—	—	—	—
"	Seine Nets	9	358	45	Aberdeen	290	1,889	—	—	—	—
FAROESE	Lines—Great Purse Seine	40	9,393	489	Aberdeen	—	—	5,542	20,463	—	—
"	"	2	24	7	Aberdeen	—	—	2,238	5,317	—	—
EAST GERMAN	Pair Trawl—Herring	2	16	4	Lerwick	372	186	—	—	—	—
WEST GERMAN	Trawl—White Fish	1	16	2	Aberdeen	16	148	—	—	—	—
ICELANDIC	Trawl—White Fish	8	570	67	Aberdeen	—	—	3,106	12,987	—	—
IRISH REPUBLIC	Trawl—White Fish	1	30	4	Aberdeen	71	273	—	—	—	—
NETHERLANDS	Trawl—White Fish	3	110	12	Aberdeen	683	1,815	—	—	—	—
NORWEGIAN	Lines—Great	9	750	61	Scrabster	502	887	—	341	569	—
"	Lines—Great	1	—	—	Sornoway	—	—	—	—	9	75
"	Purse Seine	24	131	24	Lerwick	22,156	11,257	—	—	—	—
SWEDISH	Trawl—White Fish	1	30	4	Aberdeen	352	1,314	—	—	—	—
"	Trawl—Herring	71	1,933	272	Aberdeen	36,150	90,868	—	—	—	—
"	Seine Nets	1	50	5	Aberdeen	289	1,110	—	—	—	—

* Including shell fish.

TABLE 21

Fish processed: Quantity and value of white fish processed according to method of process

	Quantity (cwt.)*		Value (£)*					
	Total		Total		Dried	Smoked	Pickled	Canned
	1965	1964	1965	1964				
All species	270,869	—	2,612,416	—	41,113	2,101,331	10,380	459,592
	1964	—	—	2,109,440	20,644	1,572,769	22,196	493,831
Mackerel	1,703	2,964	4,290	9,071	—	120	4,170	—
Sprats	33,100	36,883	422,000	493,831	—	—	—	422,000
Cod	29,677	21,696	391,655	244,678	578	391,077	—	—
Haddock	108,832	86,414	1,122,851	894,906	364	1,122,487	—	—
Hake	245	—	3,430	—	—	3,430	—	—
Ling	14,031	9,496	106,361	74,606	18,116	88,245	—	—
Redfish	50	3	400	21	70	330	—	—
Saithe	31,550	16,492	155,398	83,403	21,163	128,025	6,210	—
Torsk	11,158	10,110	89,264	75,575	472	88,792	—	—
Whiting	40,163	24,308	314,067	231,421	350	276,125	—	37,592
Other Species	360	241	2,700	1,928	—	2,700	—	—

*After process.

TABLE 22.

Fish processed: Quantity and value of herring processed in each district according to

	Quantity								
	Pickle Cured (Barrels)				Processes other than Pickle-Cured (Crans)				
	Total		Gutted	Ungutted	Total		Kippered	Bloatered or Redded	Canned
	1965	1964			1965	1964			
ALL DISTRICTS 1965	23,018	—	16,310	6,708	183,314	—	152,129	211	30,974
1964	—	17,791	17,791	—	—	219,226	188,304	290	30,632
East Coast: Total	3,773	7,423	3,773	—	168,736	202,736	137,551	211	30,974
Eyemouth	—	13	—	—	—	2	—	—	—
Leith	—	—	—	—	8,098	8,619	8,093	5	—
Anstruther	—	—	—	—	—	—	—	—	—
Arbroath	—	—	—	—	—	—	—	—	—
Aberdeen	—	—	—	—	45,695	53,162	38,457	102	7,136
Peterhead	654	1,570	654	—	26,295	26,080	10,313	104	15,878
Fraserburgh	3,119	5,808	3,119	—	81,721	106,698	73,761	—	7,960
Macduff	—	—	—	—	—	—	—	—	—
Buckie	—	—	—	—	6,927	8,175	6,927	—	—
Lossiemouth	—	6	—	—	—	—	—	—	—
Wick	—	26	—	—	—	—	—	—	—
Lerwick	12,013	7,387	11,617	396	4,244	2,671	4,244	—	—
West Coast: Total	7,232	2,981	920	6,312	10,334	13,819	10,334	—	—
Stornoway	2,165	1,701	615	1,550	752	1,506	752	—	—
Ullapool	4,871	1,007	109	4,762	—	59	—	—	—
Kyle	63	88	63	—	5,688	9,413	5,688	—	—
Oban	—	—	—	—	—	—	—	—	—
Campbeltown	133	185	133	—	1,173	376	1,173	—	—
Ayr	—	—	—	—	2,721	2,465	2,721	—	—

* The values shown are the values after processing.

Included above as processed in Scotland are the following of non-Scottish origin:—

Country of Origin	District where Processed	Total		Method of Process			
		1965	1964	Kippered	Canned	Bloatered	Pickle-Cured
England	Eyemouth	—	10	—	—	—	—
	Leith	141	469	141	—	—	—
	Aberdeen	834	85	834	—	—	—
	Peterhead	1,481	611	1,481	—	—	—
	Fraserburgh	5,900	1,911	5,900	—	—	—
	Buckie	—	—	—	—	—	—
	Ayr	—	7	—	—	—	—
Norway	Leith	—	10	—	—	—	—
	Aberdeen	255	1,010	255	—	—	—
	Peterhead	64	—	64	—	—	—
	Fraserburgh	165	529	165	—	—	—
Russia	Aberdeen	204	—	204	—	—	—
	Northern Ireland	257	911	257	—	—	—
Irish Republic	Leith	—	—	—	—	—	—
	Aberdeen	1,164	214	1,164	—	—	—
	Peterhead	—	782	—	—	—	—
Sweden	Peterhead	—	96	—	—	—	—
	Fraserburgh	—	110	—	—	—	—
	Total	10,465	6,755	10,465	—	—	—

TABLE 22—continued

method of process

Value (£)*									
Pickle-Cured				Processes other than Pickle-Cured					
Total		Gutted	Ungutted	Total		Kipperd	Bloatered or Redded	Canned	
1965	1964			1965	1964				
171,408	—	132,937	38,471	2,771,636	—	2,130,100	2,597	638,939	
—	114,725	114,725	—	—	3,123,052	2,446,011	3,338	673,703	
29,132	42,611	29,132	—	2,466,740	2,880,443	1,825,204	2,597	638,939	
—	102	—	—	—	32	—	—	—	Eyemouth
—	—	—	—	113,402	108,600	113,302	100	—	Leith
—	—	—	—	—	—	—	—	—	Anstruther
—	—	—	—	—	—	—	—	—	Arbroath
—	—	—	—	700,812	783,184	525,419	1,275	174,118	Aberdeen
5,252	8,972	5,252	—	444,912	435,955	134,069	1,222	309,621	Peterhead
23,880	33,310	23,880	—	1,114,100	1,442,310	958,900	—	155,200	Fraserburgh
—	—	—	—	—	—	—	—	—	Macduff
—	—	—	—	93,514	110,362	93,514	—	—	Buckie
—	45	—	—	—	—	—	—	—	Lossiemouth
—	182	—	—	—	—	—	—	—	Wick
97,785	46,187	95,607	2,178	67,904	40,065	67,904	—	—	Lerwick
44,491	25,927	8,198	36,293	236,992	202,544	236,992	—	—	
14,443	15,225	5,531	8,912	13,424	19,766	13,424	—	—	Stornoway
28,347	8,308	966	27,381	—	1,038	—	—	—	Ullapool
504	792	504	—	171,544	144,169	171,544	—	—	Kyle
—	—	—	—	—	—	—	—	—	Oban
1,197	1,602	1,197	—	15,835	4,790	15,835	—	—	Campbeltown
—	—	—	—	36,189	32,781	36,189	—	—	Ayr

Total		Method of Process				
1965	1964	Kipperd	Canned	Bloatered	Pickle-Cured	
£	£	£	£	£	£	
—	102	—	—	—	—	Eyemouth
1,974	5,821	1,974	—	—	—	Leith
11,395	1,148	11,395	—	—	—	Aberdeen
19,253	8,312	19,253	—	—	—	Peterhead
76,700	30,660	76,700	—	—	—	Fraserburgh
—	—	—	—	—	—	Buckie
—	93	—	—	—	—	Ayr
—	126	—	—	—	—	Leith
3,485	13,635	3,485	—	—	—	Aberdeen
832	—	832	—	—	—	Peterhead
2,150	6,610	2,150	—	—	—	Fraserburgh
—	—	—	—	—	—	Buckie
2,856	—	2,856	—	—	—	Aberdeen
3,340	11,380	3,340	—	—	—	Fraserburgh
—	—	—	—	—	—	Leith
15,903	2,589	15,903	—	—	—	Aberdeen
—	16,818	—	—	—	—	Peterhead
—	1,200	—	—	—	—	Peterhead
—	1,370	—	—	—	—	Fraserburgh
137,888	99,864	137,888	—	—	—	

TABLE 23

Fish processed: Quantity of herring processed (1913 to 1965)

	PICKLE CURED (BARRELS)						PROCESSES OTHER THAN PICKLE-CURED (CRANS)					
	Total	EAST COAST (with Orkney and Shetland)		WEST COAST		Total	EAST COAST (with Orkney and Shetland)			WEST COAST		
		Gutted	Ungutted	Gutted	Ungutted		Kipperd	Bloated or Redded	Canned	Kipperd	Bloated or Redded	Canned
1913	1,294,387	1,067,509	—	217,649	9,229	163,901	70,445	6,692	44,961	41,716	87	—
1919	680,956	578,782	45,135	41,215	15,824	314,636	208,023	14,516	33,113	58,868	116	—
1929	1,092,335	914,231	4,124	173,372	608	156,724	83,402	2,313	27,220	43,644	145	—
1939	231,439	193,329	53	38,054	3	173,944	101,602	987	26,971	44,250	134	—
1949	151,878	103,535	6,446	41,897	—	341,402	238,803	1,401	50,447	49,281	—	1,470
1959	78,331	57,051	52	478	20,750	181,860	109,700	124	58,222	13,814	—	—
1962	20,632	10,904	—	3,441	6,287	198,712	143,226	362	38,053	17,071	—	—
1963	29,943	23,938	—	1,895	4,110	213,191	157,815	400	43,140	11,836	—	—
1964	17,791	14,810	—	2,981	—	219,226	174,485	290	30,632	13,819	—	—
1965	23,018	15,390	396	920	6,312	183,314	141,795	211	30,974	10,334	—	—

TABLE 24

Fishing vessels

Number at 31st December in each year

Year	Total all Vessels	140 ft. and Over	110 ft. - 139.9 ft.	80 ft. - 109.9 ft.	60 ft. - 79.9 ft.	40 ft. - 59.9 ft.	Under 40 ft.	
							Motor	Sail
1963	2,981	2	76	63	871		1,925	44
1964	2,947	2	73	64	324	543	1,897	44
1965*	2,937	2	69	62	308	571	1,882	43

* Of the 133 vessels of 80 feet and over in 1965; 120 were motor trawlers; 5 were steam trawlers, 7 were liners and there was 1 seiner.

TABLE 25

Fishing vessels in each district

Number at 31st December

	Total	140 ft. and Over	110 ft. - 139.9 ft.	80 ft. - 109.9 ft.	60 ft. - 79.9 ft.	40 ft. - 59.9 ft.	Under 40 ft.	
							Motor	Sail
ALL DISTRICTS	2,937	2*	69†	62	308	571	1,882	43
East Coast:								
Total	1,486	2*	69†	62	276	394	681	2
Eyemouth	64	—	—	—	1	26	37	—
Leith	135	—	7	11	10	49	58	—
Anstruther	157	—	—	—	13	36	108	—
Arbroath	114	—	—	—	3	30	81	—
Aberdeen	195	2*	62†	50	29	8	44	—
Peterhead	133	—	—	1	48	7	76	1
Fraserburgh	154	—	—	—	55	27	72	—
Macduff	159	—	—	—	25	70	64	—
Buckie	111	—	—	—	49	41	21	—
Lossiemouth	128	—	—	—	40	63	25	—
Wick	136	—	—	—	3	37	95	1
Lerwick	656	—	—	—	25	43	568	20
West Coast:								
Total	795	—	—	—	7	134	633	21
Stornoway	350	—	—	—	3	23	324	—
Ullapool	67	—	—	—	3	6	57	1
Kyle	128	—	—	—	—	29	84	15
Oban	40	—	—	—	—	4	36	—
Campbeltown	124	—	—	—	—	37	83	4
Ayr	86	—	—	—	1	35	49	1

* Includes 1 Steam vessel.

† Includes 4 steam vessels.

TABLE 26

Number of vessels under 80 feet categorized by method of fishing mainly engaged in during 1963, 1964, 1965

Year	Drift	Ring	Lines	Seine	Trawl (inc. Light trawl)	Nephrops Trawl	Shell Fishing (other than Nephrops Trawl)	Other Methods	All Sail Vessels
1963	98	96	694	602	101		1,161	39	44
1964	80	79	637	590	46	106	1,193	33	44
1965	75	73	601	573	77	124	1,195	43	43

TABLE 27

Fishermen employed

Number at 31st December in each year

	1938†	1961	1962	1963	1964	1965
REGULARLY AND PARTIALLY EMPLOYED						
All vessels	17,915	10,870	10,610	10,527	10,249	10,145
Steam trawlers	3,159	230	181	117	92	71
Motor trawlers	—	1,708	1,772	1,900	2,138	2,385
Other motor vessels	7,751	8,926	8,652	8,507	8,019	7,689
Steam drifters and liners	3,912	—	—	—	—	—
Sail vessels	3,093	6	5	3	—	—
REGULARLY EMPLOYED						
All vessels	12,976	8,671	8,441	8,289	8,181	8,057
PARTIALLY EMPLOYED*						
All vessels	4,939	2,199	2,169	2,238	2,068	2,088

*Includes crofter fishermen numbering 4,067 in 1938, 1,134 in 1961, 1,057 in 1962, 991 in 1963, 916 in 1964, and 875 in 1965.

†Figures as at 30th November.

TABLE 28

Herring fishing: Greatest number of vessels and persons employed in each district in any week

	1938			1964			1965		
	Vessels	Fishermen	Shore Workmen	Vessels	Fishermen	Shore Workmen	Vessels	Fishermen	Shore Workmen
East Coast:									
Eyemouth	46	421	104	19	114	22	4	26	52
Leith	142	821	185	—	—	—	—	—	—
Anstruther	270	1,860	169	—	—	—	—	—	—
Arbroath	3	16	6	—	—	—	—	—	—
Aberdeen	51	495	577	19	183	654	17	176	673
Peterhead	150	1,460	1,778	18	180	471	17	170	366
Fraserburgh	252	2,352	1,727	58	580	950	61	610	996
Macduff	34	241	73	—	—	—	—	—	—
Buckie	57	652	153	8	80	75	4	36	41
Lossiemouth	25	137	24	5	35	8	19	128	178
Helmisdale*	23	115	—	—	—	—	—	—	—
Wick	109	1,060	686	—	—	—	—	—	—
Lerwick	376	3,643	2,197	60	550	423	42	385	327
West Coast:									
Stornoway	223	1,885	816	10	80	82	12	92	74
Ullapool	4	15	5	58	486	62	44	420	63
Kyle	13	79	16	44	296	119	42	252	121
Oban	27	180	194	43	269	57	66	470	50
Campbeltown	46	230	16	40	240	44	42	256	48
Tarbert†	128	660	134	—	—	—	—	—	—
Ayr	240	1,220	412	51	306	122	63	380	55

* Merged with Lossiemouth and Wick Districts from 1957.

† Merged with Campbeltown District from 1957.

TABLE 29

Creek return: Number of vessels and fishermen and quantity and value of fish landed in Scotland in the year 1965

CREEK	VESSELS						Fisher- men	FISH LANDED BY BRITISH VESSELS							
	Total	40 ft. and over			Under 40 ft.			Herring	Other Pelagic		Demersal		Shell Fish		
		Trawl		Other Methods	Motor	Sail									
		Steam	Motor												Motor
ALL DISTRICTS	2,937	5	265	742	1,882	43	10,145	cwt. 1,627,479	£ 2,276,803	cwt. 959,334	£ 422,101	cwt. 4,764,612	£ 14,808,625	cwt. 192,156	£ 1,656,559
Eymouth District															
1 Burnmouth	18	—	—	7	11	—	55	—	—	10	10	9,063	24,470	4,550	34,924
2 Eymouth	26	—	2	17	7	—	114	—	1	158	250	150,937	418,875	3,355	25,578
3 St. Abbs	20	—	—	1	19	—	29	—	—	43	65	2,184	6,815	2,892	19,998
Total	64	—	2	25	37	—	198	—	1	211	325	162,184	450,160	10,797	80,500
Leith District															
1 Cove	3	—	—	—	3	—	5	—	—	—	—	—	—	411	4,270
2 Dunbar	23	—	3	3	17	—	60	—	—	12	17	7,919	16,724	5,138	40,155
3 North Berwick	2	—	—	—	2	—	10	—	—	—	—	—	—	224	5,669
4 Port Seton	33	—	4	20	9	—	177	—	—	141	138	4,773	13,594	5,118	37,012
5 Fisherrow	17	—	9	6	2	—	99	—	—	—	—	112	210	1,057	914
6 Leith	—	—	—	—	—	—	—	—	—	—	—	503	1,201	3	22
7 Newhaven	16	—	1	4	11	—	51	179	156	199,715	63,734	844	2,513	291	4,824
8 Granton	20	—	18	2	—	—	233	134	271	2,231	5,123	259,926	872,224	2	14
9 Alloa	11	—	—	5	6	—	27	—	—	—	—	—	—	—	—
10 Kincardine	3	—	—	2	1	—	4	—	—	20,418	5,190	—	—	—	—
11 Burntisland	—	—	—	—	—	—	—	—	—	17,930	6,552	—	—	—	—
12 Kirkcaldy	5	—	—	—	5	—	7	—	—	47	57	—	—	—	—
13 Dysart	2	—	—	—	2	—	4	—	—	—	—	—	—	—	—
Total	135	—	35	42	58	—	677	313	427	240,494	80,811	274,077	906,466	12,244	92,880
Anstruther District															
1 Methil and Leven	14	—	—	—	14	—	15	—	—	676	354	84	326	283	5,211
2 St. Monance	19	—	1	7	11	—	69	17	27	4,793	1,740	9,507	29,390	1,457	10,222
3 Pittenweem	35	—	—	21	14	—	117	—	—	1,783	1,740	54,955	190,182	4,708	35,064
4 Anstruther	44	—	2	14	28	—	107	—	—	1,949	1,317	23,615	83,489	5,223	33,542
5 Crail	24	—	—	—	24	—	39	—	—	181	331	—	—	3,551	31,408
6 St. Andrews	14	—	—	—	14	—	7	—	—	—	—	—	—	731	6,194
7 Tayport	1	—	—	—	1	—	2	—	—	1,065	350	—	—	1,387	924
8 Newburgh	6	—	—	4	2	—	10	—	—	1,243	2,696	—	—	—	—
Total	157	—	3	46	108	—	366	17	27	11,690	8,528	88,161	303,387	17,340	122,565
Arbroath District															
1 Dundee	2	—	—	1	1	—	4	—	—	1,969	882	—	—	—	—
2 Arbroath	45	—	—	25	20	—	177	181	388	3,924	1,689	62,477	193,169	1,765	27,657
3 Montrose	20	—	—	1	19	—	19	—	—	3,480	1,370	8,051	29,728	5,034	6,857
4 Johnshaven	16	—	—	—	16	—	23	—	—	—	—	1,603	6,051	340	4,783
5 Gourdon	31	—	—	6	25	—	68	—	—	—	4	28,803	87,296	1,963	10,053
Total	114	—	—	33	81	—	291	181	388	9,374	3,945	100,934	316,244	9,102	49,350
Aberdeen District															
1 Catterline	6	—	—	—	6	—	6	—	—	—	—	471	1,313	179	834
2 Stonehaven	25	—	—	3	22	—	75	—	—	301	139	11,062	37,919	418	3,281
3 Cove	6	—	—	—	6	—	13	—	—	—	—	28	119	78	1,235
4 Aberdeen	158	5	121	22	10	—	1,653	70,884	153,595	87,121	46,764	2,056,484	6,978,549	355	1,083
Total	195	5	121	25	44	—	1,747	70,884	153,595	87,422	46,903	2,068,045	7,017,900	1,030	6,433

TABLE 29—continued

CREEK	VESSELS						Fisher- men	FISH LANDED BY BRITISH VESSELS								
	Total	40 ft. and over			Under 40 ft.			Herring	Other Pelagic		Demersal		Shell Fish			
		Trawl		Other Meth- ods	Motor	Sail			cwt.	£	cwt.	£	cwt.	£	cwt.	£
		Steam	Motor													
Peterhead District																
1. Collieston	1	—	—	—	1	—	—	—	—	—	—	—	—	—		
2. Whinniford	3	—	—	—	3	—	—	—	—	—	—	—	4	156		
3. Port Errol	2	—	—	—	2	—	—	—	—	—	—	—	1	35		
4. Boddam	16	—	—	—	15	1	—	—	—	—	—	—	870	2,449		
5. Peterhead	111	—	14	42	55	—	483	25,072	38,029	60,725	26,397	170,841	451,617	2,080	10,654	
Total	133	—	14	42	76	1	516	25,072	38,029	60,725	26,397	170,841	451,617	2,955	13,294	
Fraserburgh District																
1. St. Combs and Charleston	12	—	—	5	7	—	51	—	—	—	—	27	130	3	41	
2. Inverallochy	10	—	1	4	5	—	59	—	—	—	—	—	—	12	286	
3. Cairnbulg	15	—	—	12	3	—	108	—	—	—	—	—	—	101	715	
4. Fraserburgh	97	—	8	50	39	—	546	181,166	353,763	85,560	47,259	345,538	943,471	8,401	34,278	
5. Sandhaven and Pitullie	9	—	—	1	8	—	26	—	—	—	—	50	115	1,164	2,197	
6. Rosehearty	4	—	—	1	3	—	32	—	77	157	51	154	85	722		
7. Pennan	7	—	—	—	7	—	11	—	64	131	—	—	—	157	618	
Total	154	—	9	73	72	—	833	181,166	353,763	85,701	47,547	345,666	943,870	9,923	38,857	
Macduff District																
1. Gardentown	60	—	—	37	19	—	321	—	—	949	1,892	8	34	1,925	4,548	
2. Macduff	44	—	1	27	16	—	198	—	—	767	367	23,803	91,744	14	51	
3. Whitehills	32	—	—	15	17	—	131	—	—	2,100	4,166	78,331	252,461	314	2,172	
4. Portsoy	23	—	3	8	12	—	83	—	—	364	667	—	—	284	1,186	
Total	159	—	8	87	64	—	733	—	—	4,180	7,092	102,142	344,239	2,537	7,957	
Buckle District																
1. Portknockie	22	—	5	12	5	—	98	—	—	8	20	100	402	—	—	
2. Findochty	23	—	5	11	7	—	120	—	—	108	159	174	699	—	—	
3. Buckie	66	—	21	36	9	—	364	12,882	23,631	167,202	79,396	242,353	799,411	12,546	95,378	
Total	111	—	31	59	21	—	582	12,882	23,631	167,318	79,575	242,627	800,512	12,546	95,378	
Lossiemouth District																
1. Lossiemouth	63	—	—	60	3	—	375	18	53	1,166	571	161,684	481,795	1,069	6,827	
2. Hopman	26	—	3	15	8	—	117	—	—	—	—	—	—	48	2,172	
3. Burghead	9	—	2	5	2	—	51	147	59	67,719	27,028	6,313	19,709	5,377	40,836	
4. Nairn	6	—	—	4	2	—	38	—	—	—	—	—	—	229	865	
5. Inverness	—	—	—	—	—	—	—	144,326	107,809	201,606	76,751	—	—	—	—	
6. Avoch	14	—	5	9	—	—	95	—	—	—	—	—	—	220	1,894	
7. Cromarty	—	—	—	—	—	—	—	—	—	—	—	—	—	—	—	
8. Portmahomack	10	—	—	—	10	—	19	—	—	—	—	—	—	1,338	4,060	
Total	128	—	10	93	25	—	695	144,491	107,921	270,491	104,350	167,997	501,504	8,281	56,654	

TABLE 29—continued

CREEK	VESSELS						Fisher- men	FISH LANDED BY BRITISH VESSELS							
	Total	40 ft. and over			Under 40 ft.			Herring	Other Pefagic		Demersal		Shell Fish		
		Trawl		Other Meth- ods	Motor	Sail									
		Steam	Motor	Motor											
						cwt.	£	cwt.	£	cwt.	£	cwt.	£		
Wick District															
1 Golspie	1	—	—	—	1	—	4	—	—	—	—	—	118	1,137	
2 Brora	7	—	—	—	7	—	12	—	—	—	—	—	126	1,035	
3 Helmsdale	10	—	—	7	3	—	40	—	—	36	25	22,174	57,946	343	14,853
4 Dünbeath	6	—	—	1	5	—	8	—	—	—	—	—	11	474	
5 Lathronwheel	2	—	—	—	2	—	3	—	—	—	—	—	11	515	
6 Lybster	8	—	—	3	5	—	23	211	422	50	118	8,052	23,250	34	1,314
7 Whaligoe	1	—	—	—	1	—	2	—	—	—	—	—	10	426	
8 Wick	34	—	—	22	12	—	126	434	942	14	16	48,403	163,525	33	762
9 Staxigoe	—	—	—	—	—	—	2	—	—	—	—	—	9	155	
10 Keiss	3	—	—	—	3	—	9	—	—	—	—	2	7	1,839	5,199
11 Auckengill	4	—	—	—	4	—	4	—	—	—	—	—	31	366	
12 Stroma	—	—	—	—	—	—	—	—	—	—	—	—	—	—	
13 John o' Groats	8	—	—	—	8	—	12	—	—	—	—	3	12	177	2,444
14 Scarfskerry	5	—	—	—	5	—	4	—	—	—	—	19	75	55	1,603
15 Brough	5	—	—	—	5	—	8	—	—	—	—	—	27	743	
16 Castlehill	2	—	—	—	2	—	4	—	—	—	—	—	8	375	
17 Thurso	7	—	—	4	3	—	5	—	—	—	—	—	304	1,271	
18 Scrabster	10	—	—	3	7	—	54	31	75	7	11	63,874	190,783	363	3,766
19 Crosskirk	4	—	—	—	4	—	6	—	—	—	—	—	23	255	
20 Portskerra	10	—	—	—	10	—	14	—	—	—	—	19	82	27	1,051
21 Kirtomy	2	—	—	—	2	—	4	—	—	—	—	—	5	211	
22 Skerry	3	—	—	—	3	—	6	—	—	—	—	—	6	275	
23 Talmine	1	—	—	—	1	—	2	—	—	—	—	—	35	1,228	
24 Erribol	3	—	—	—	2	1	6	—	—	1,619	2,613	2	4	248	1,681
Total	136	—	—	40	95	1	*358	676	1,439	1,726	2,783	142,548	435,684	3,843	41,139
Lerwick District															
1 Sanday	50	—	—	—	49	1	78	—	—	—	—	—	—	422	15,982
2 Westray	48	—	—	3	43	2	75	—	—	—	—	144	256	609	23,382
3 Eday	16	—	—	—	14	2	25	—	—	—	—	—	—	147	5,804
4 Stronsay	26	—	—	5	21	—	42	—	—	—	—	—	—	509	21,004
5 Rousay to Shapinsay	19	—	—	2	17	—	35	—	—	—	—	—	—	217	7,133
6 Birsay	18	—	—	—	18	—	28	—	—	—	—	—	—	203	6,216
7 Kirkwall	29	—	—	4	24	1	46	—	—	—	—	108	261	883	29,252
8 Deerness	11	—	—	—	11	—	13	—	—	—	—	—	—	110	2,901
9 Holm	10	—	—	—	10	—	15	—	—	—	—	—	—	132	885
10 Burray	4	—	—	—	4	—	5	—	—	—	—	—	—	138	1,419
11 Stromness	21	—	—	2	19	—	38	—	—	894	899	1,123	3,012	1,178	28,966
12 Hoy	7	—	—	—	7	—	11	—	—	—	—	—	—	19	671
13 Walls (Orkney)	30	—	—	—	30	—	46	—	—	—	—	—	—	489	11,138
14 South Ronaldshay	32	—	—	—	30	2	48	—	—	—	—	—	—	382	9,139
15 Dunrossness and Fair Isle	15	—	—	1	10	4	34	—	—	—	—	—	—	48	628
16 Levenwick	23	—	—	—	21	2	38	—	—	—	—	—	—	49	754
17 Lerwick and Bressay	34	—	—	6	26	2	65	116,567	173,362	844	728	121,673	195,412	222	4,308
18 Whalsay and Skerries	45	—	—	19	26	—	198	—	—	—	—	—	—	122	4,357
19 Yell and Feclar	28	—	—	3	25	—	65	—	—	—	—	—	—	156	4,777
20 Uyeasound and Baltasound	10	—	—	—	9	1	14	—	—	—	—	—	—	102	2,965
21 North Roe to Hillswick	18	—	—	—	16	2	30	—	—	—	—	—	—	3,190	10,948
22 Walls (Shetland)	44	—	—	—	44	—	70	220	81	3	3	12,051	14,907	3,755	15,957
23 Scalloway and Isles	118	—	—	23	94	1	319	4,974	8,185	74	69	91,012	113,124	1,246	15,837
Total	656	—	—	68	568	20	†1,338	121,761	181,628	1,815	1,699	226,111	326,972	14,328	224,423

* Including 27 crofter fishermen.

† Including 260 crofter fishermen.

TABLE 29—continued

CREEK	VESSELS						Fisher- men	FISH LANDED BY BRITISH VESSELS							
	Total	40 ft. and over			Under 40 ft.			Herring	Other Pelagic		Demersal		Shell Fish		
		Trawl		Other Meth- ods	Motor	Sail									
		Steam	Motor	Motor											
Scornoway District							cwt.	£	cwt.	£	cwt.	£	cwt.	£	
1 South Lochs	29	—	—	3	26	—	—	—	18	18	25	46	73	617	
2 North Lochs	15	—	—	—	15	—	—	—	33	33	272	433	66	166	
3 Scornoway	13	—	5	1	7	—	54,377	34,121	2	4	9,648	24,243	4,658	45,155	
4 Garrabost	6	—	1	—	5	—	—	—	—	—	138	414	79	148	
5 Portnaguran	8	—	1	—	7	—	—	—	—	—	456	1,449	117	1,568	
6 Back	16	—	3	—	13	—	—	—	—	—	1,559	4,672	59	106	
7 Ness	23	—	1	—	22	—	—	—	—	—	123	421	—	—	
8 Bernera (Lewis)	21	—	—	—	21	—	—	—	—	—	—	—	430	20,124	
9 North Harris	18	—	—	—	18	—	—	—	—	—	—	—	—	—	
10 Scalpay	31	—	—	6	25	—	—	—	—	—	—	—	—	2 150	
11 South Harris	22	—	—	—	22	—	—	—	—	—	—	—	—	58 2,377	
12 Bernera (N. Uist)	9	—	—	—	9	—	—	—	—	—	—	—	—	225 9,050	
13 Hougharry and Loch Eport	14	—	—	—	14	—	—	—	—	—	—	—	—	—	
14 Grimsay	48	—	—	—	48	—	—	—	—	—	—	—	—	208 7,591	
15 Loch Carnan	20	—	—	—	20	—	—	—	40	80	—	—	—	30 65	
16 Lochboisdale	22	—	1	2	19	—	—	—	—	—	—	—	—	533 1,853	
17 Castlebay	35	—	2	—	33	—	—	—	—	—	—	—	—	331 2,902	
Total	350	—	14	12	324	—	54,377	34,121	93	135	12,221	31,678	6,869	91,872	
Ullapool District															
1 Cape Wrath to Laxford (Kinloch- bernie)	14	—	—	1	13	—	392	732	129	170	189,298	444,186	302	4,195	
2 Foindlemore to Loch Glendhu	9	—	—	—	9	—	—	—	—	—	—	—	35	1,583	
3 Loch Glencoul to Culkein	4	—	—	—	4	—	—	—	—	—	—	—	59	2,715	
4 Rhu Stoer to Enard (Loch Inver)	9	—	—	6	2	1	571	835	58	74	153,096	397,812	1,329	12,340	
5 Rhu Coigach to Badluachrach (Ullapool)	5	—	—	—	5	—	252,586	275,614	—	—	899	2,817	36	1,665	
6 Gruinard to Aultbea	3	—	—	—	3	—	—	—	—	—	—	—	4	177	
7 Poolawe to Cove	9	—	—	—	9	—	—	—	—	—	—	—	2	92	
8 Rudh Re to Red Point (Gairloch)	14	—	1	1	12	—	2,535	2,000	1	1	56,025	167,052	8,437	79,009	
Total	67	—	1	8	57	1	256,084	279,181	188	245	399,318	1,011,867	10,204	101,776	
Kyle District															
1 Torridon	5	—	—	1	4	—	—	—	3	3	8	8	3	6	
2 Applecross	1	—	—	1	—	—	—	—	—	—	14	20	—	—	
3 Carron	5	—	—	1	4	—	—	—	—	—	—	—	253	775	
4 Kyle	14	—	—	3	11	—	—	—	—	—	3,899	11,373	1,291	13,055	
5 Sleat	—	—	—	—	—	—	—	—	—	—	—	—	—	—	
6 Broadford	9	—	—	4	5	—	—	—	—	—	113	212	280	560	
7 Portree	18	—	—	2	9	7	—	—	—	—	363	923	636	3,852	
8 Snizort	9	—	—	—	8	1	—	—	—	—	44	90	315	3,172	
9 Dunvegan	13	—	—	—	11	2	—	—	—	—	—	—	284	709	
10 Bracadale	16	—	—	1	11	4	—	—	48	16	100	52	207	821	
11 Strachaird	7	—	—	—	6	1	—	—	—	—	—	—	161	609	
12 Mallaig	31	—	4	12	15	—	236,777	333,837	196	261	10,380	32,905	16,558	195,455	
Total	128	—	4	25	84	15	236,777	333,837	247	280	14,921	45,583	19,988	219,014	

* Including 418 crofter fishermen.

† Including 22 crofter fishermen.

‡ Including 138 crofter fishermen.

TABLE 29—continued

CREEK	VESSELS						Fisher- men	FISH LANDED BY BRITISH VESSELS							
	Total	40 ft. and over			Under 40 ft.			Herring	Other Pelagic		Demersal		Shell Fish		
		Trawl		Other Meth- ods	Motor	Sail									
		Steam	Motor												Motor
Oban District							cwt.	£	cwt.	£	cwt.	£	cwt.	£	
1 Arisaig	3	—	—	—	3	—	—	—	—	—	—	—	389	860	
2 Ardnamurchan	2	—	—	—	2	—	—	—	—	—	—	—	1	59	
3 Fort William	1	—	—	—	1	—	—	—	—	—	—	—	—	—	
4 Oban	4	—	—	3	1	—	218,709	293,571	46	98	81,784	315,390	8,477	80,973	
5 Luig	7	—	—	—	7	—	—	—	—	—	—	—	29	750	
6 Tobermory (Isle of Mull)	3	—	—	1	2	—	—	—	—	—	—	—	242	9,786	
7 Loch Scridain (Isle of Mull)	4	—	—	—	4	—	—	—	—	—	—	—	116	361	
8 Loch Buie (Isle of Mull)	—	—	—	—	—	—	—	—	—	—	—	—	—	11	
9 Canna (Outer Isles)	—	—	—	—	—	—	—	—	—	—	—	—	14	621	
10 Coll	4	—	—	—	4	—	—	—	—	—	—	—	53	893	
11 Tiree	12	—	—	—	12	—	—	—	—	—	—	—	233	2,529	
Total	40	—	—	4	36	—	218,709	293,571	46	98	81,784	315,390	9,554	96,843	
Campbeltown District															
1 West Loch Tarbert	—	—	—	—	—	—	—	—	—	—	478	1,870	3,071	19,804	
2 Gigha	4	—	—	—	4	—	—	—	—	—	—	—	74	2,086	
3 Port Ellen	6	—	—	—	6	—	—	—	—	—	—	—	54	305	
4 Portaskaig	10	—	—	—	10	—	—	—	—	—	—	—	12	403	
5 Bruichladdich	7	—	—	1	4	2	—	—	—	—	24	120	42	1,400	
6 Bowmore	1	—	—	—	1	—	—	—	—	—	27	135	4	148	
7 Jura	—	—	—	—	—	—	—	—	—	—	—	—	—	—	
8 Colonsay	3	—	—	—	3	—	—	—	—	—	—	—	18	313	
9 Muasdale	4	—	—	—	4	—	—	—	—	—	—	—	32	996	
10 Southend	5	—	—	—	5	—	—	—	—	—	—	—	18	578	
11 Campbeltown	27	—	3	10	14	—	29	50	—	—	23,369	71,441	4,230	21,966	
12 Carradale	11	—	—	11	—	—	—	—	—	—	—	—	—	—	
13 Tarbert	17	—	—	8	8	1	124,464	259,335	7,632	3,605	5,786	14,396	1,258	8,663	
14 Ardrishaig	6	—	—	—	5	1	—	—	—	—	205	515	73	1,541	
15 Kyles of Bute	2	—	—	1	1	—	—	—	—	—	—	—	204	1,325	
16 Dunoon	1	—	—	—	1	—	—	—	—	—	—	—	109	180	
17 Loch Long	2	—	—	—	2	—	—	—	9	18	476	1,300	20	82	
18 Bute	14	—	—	3	11	—	—	—	—	—	288	1,283	332	2,242	
19 North Arran	3	—	—	—	3	—	—	—	—	—	—	—	148	967	
20 South Arran	1	—	—	—	1	—	—	—	—	—	—	—	116	1,205	
Total	124	—	3	34	83	4	124,493	259,385	7,641	3,623	30,683	91,060	9,815	64,204	
Ayr District															
1 Gareloch	—	—	—	—	—	—	—	—	—	—	—	—	—	—	
2 Helensburgh	—	—	—	—	—	—	—	—	—	—	—	—	61	91	
3 Glasgow	—	—	—	—	—	—	—	—	—	—	—	—	—	—	
4 Greenock	—	—	—	—	—	—	3,287	3,229	6,391	2,015	—	—	—	—	
5 Gourcock	—	—	—	—	—	—	—	—	—	—	—	—	—	—	
6 Wemyss Bay	—	—	—	—	—	—	—	—	—	—	—	—	—	—	
7 Largs	—	—	—	—	—	—	2	4	253	515	6,104	21,196	2,653	22,796	
8 Cumbræ	—	—	—	—	—	—	—	—	—	—	—	—	6	38	
9 Saltcoats	2	—	—	—	2	—	—	—	20	37	4,572	15,383	2,398	23,860	
10 Troon	1	—	—	—	1	—	—	—	24	48	2,323	6,996	1,298	13,437	
11 Ayr	9	—	—	3	6	—	152,171	191,237	3,255	5,085	107,808	416,083	11,197	98,840	
12 Dunure	15	—	2	10	3	—	—	—	—	—	—	—	249	801	
13 Maidens	13	—	2	10	1	—	1	2	11	26	768	2,895	1,406	11,606	
14 Girvan	15	—	6	2	7	—	10,250	8,667	18	39	6,357	24,012	6,444	52,090	
15 Ballantrae	2	—	—	—	2	—	—	—	—	—	—	—	3	160	
16 Stranraer	2	—	—	—	2	—	690	1,230	—	—	4,254	17,099	737	3,588	
17 Portpatrick	3	—	—	—	3	—	13,195	11,490	—	—	473	1,351	13	630	
18 Drummore	2	—	—	—	2	—	—	—	—	—	210	869	176	3,105	
19 Port William	5	—	—	—	5	—	—	—	—	—	—	—	1,037	3,505	
20 Isle of Whithorn	3	—	—	—	3	—	—	—	—	—	60	180	124	689	
21 Garlieston	2	—	—	—	2	—	—	—	—	—	—	—	123	1,800	
22 Kirkcudbright	1	—	—	1	—	—	—	—	—	—	440	4,093	547	4,484	
23 Kippford	1	—	—	—	1	—	—	—	—	—	—	—	8	300	
24 Carzethron	1	—	—	—	1	—	—	—	—	—	—	—	—	—	
25 Annan	9	—	—	—	9	—	—	—	—	—	1,013	4,335	2,320	11,600	
Total	86	—	10	26	49	1	179,596	215,859	9,972	7,765	134,382	514,492	30,800	253,420	

* Including 8 crofter fishermen.
† Including 2 crofter fishermen.

DIGEST OF SCOTTISH STATISTICS

No. 27 - April 1966

Price 7s. 6d. per copy
(by post 8s. 2d.)

THIS 62 page Digest is prepared half-yearly by the Scottish Statistical Office, St. Andrew's House, Edinburgh, in collaboration with the Statistics Divisions of Government Departments. Apart from the more obvious statistics it includes information on capital expenditure and cost and proceeds of the nationalised fuel industries, road and canal transport, local authorities' income and expenditure, inland revenue duties, civil and licensing courts and the weather.

The wide scope of the Digest makes it of value to industrialists, business executives, economists, journalists and all who are interested in the social economy of Scotland. A feature of the Digest is the quarterly Index of Industrial Production giving a measure of the changes since 1962 in the volume of output of a wide range of Scottish industries.

The statistical information is arranged under the following headings.

INDUSTRIAL ACTIVITY

including coal, coke and gas production: electricity generation: value of agricultural output, landings and prices of fish.

TRANSPORT AND COMMUNICATIONS

including shipping, railways, roads, aviation and postal, telegraph and telephone services.

TRADE THROUGH SCOTTISH PORTS

including imports, exports and traffic through the six main ports.

LABOUR

including manpower, insured employees, industrial stoppages and unemployment.

POPULATION AND VITAL STATISTICS

including population by region and age distribution and births, marriages and deaths registered.

SOCIAL SERVICES

including expenditure on social services, services provided by National Health Service and education.

FINANCE

including banking and savings.

MISCELLANEOUS

including meteorological data, index of retail prices, etc.

Standing orders will be accepted
and copies supplied as published

OBTAINABLE FROM

HER MAJESTY'S STATIONERY OFFICE

at the addresses on page iv of cover or through any bookseller

© Crown copyright 1966

Printed and published by
HER MAJESTY'S STATIONERY OFFICE

To be purchased from
13a Castle Street, Edinburgh 2
49 High Holborn, London, W.C.1
423 Oxford Street, London, W.1
109 St. Mary Street, Cardiff
Brazennose Street, Manchester 2
50 Fairfax Street, Bristol 1
35 Smallbrook, Ringway, Birmingham 5
80 Chichester Street, Belfast 1
or through any bookseller

Printed in Scotland