

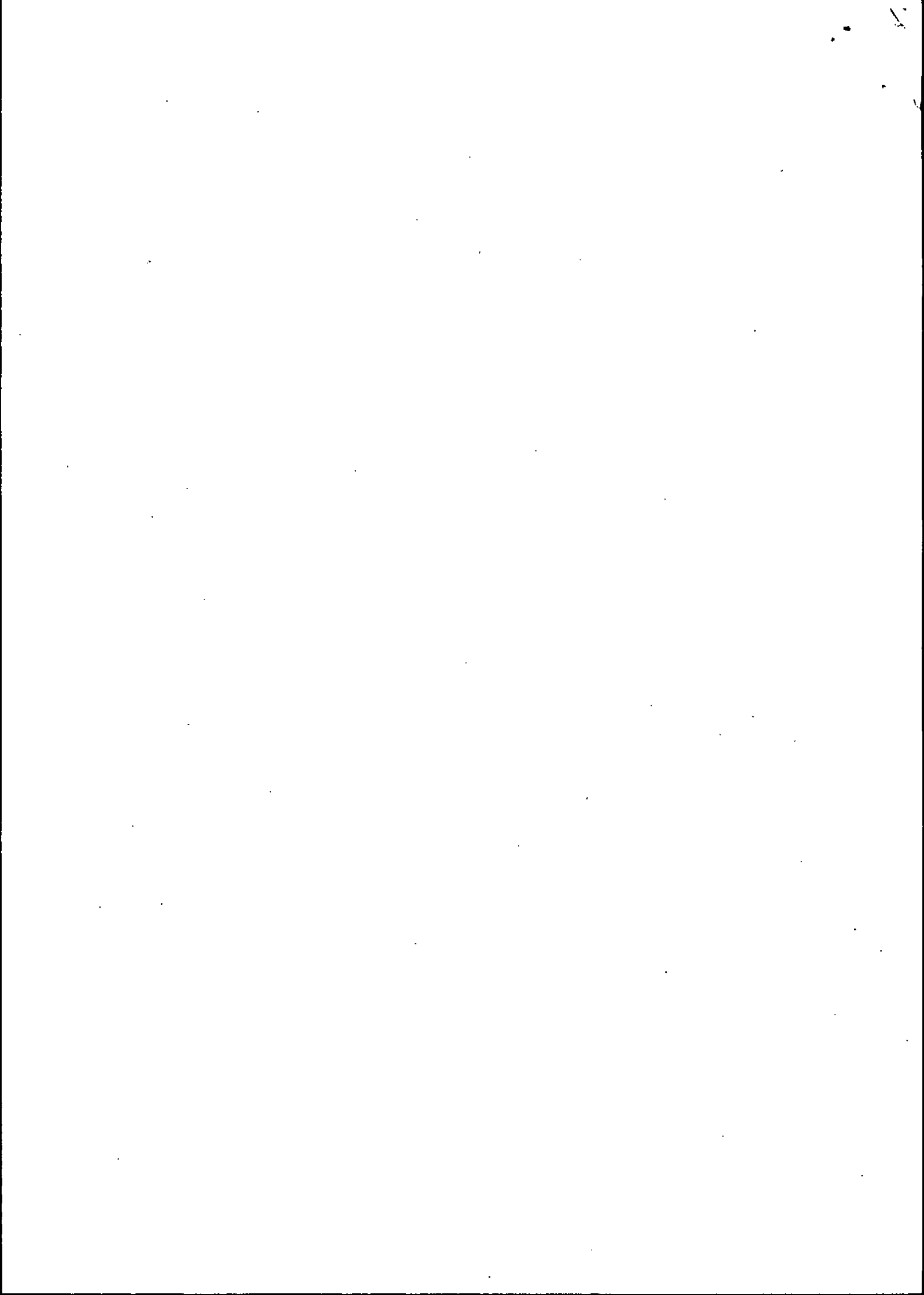
MINISTRY OF AGRICULTURE, FISHERIES AND FOOD

SEA FISHERIES  
STATISTICAL  
TABLES  
1966



LONDON: HER MAJESTY'S STATIONERY OFFICE

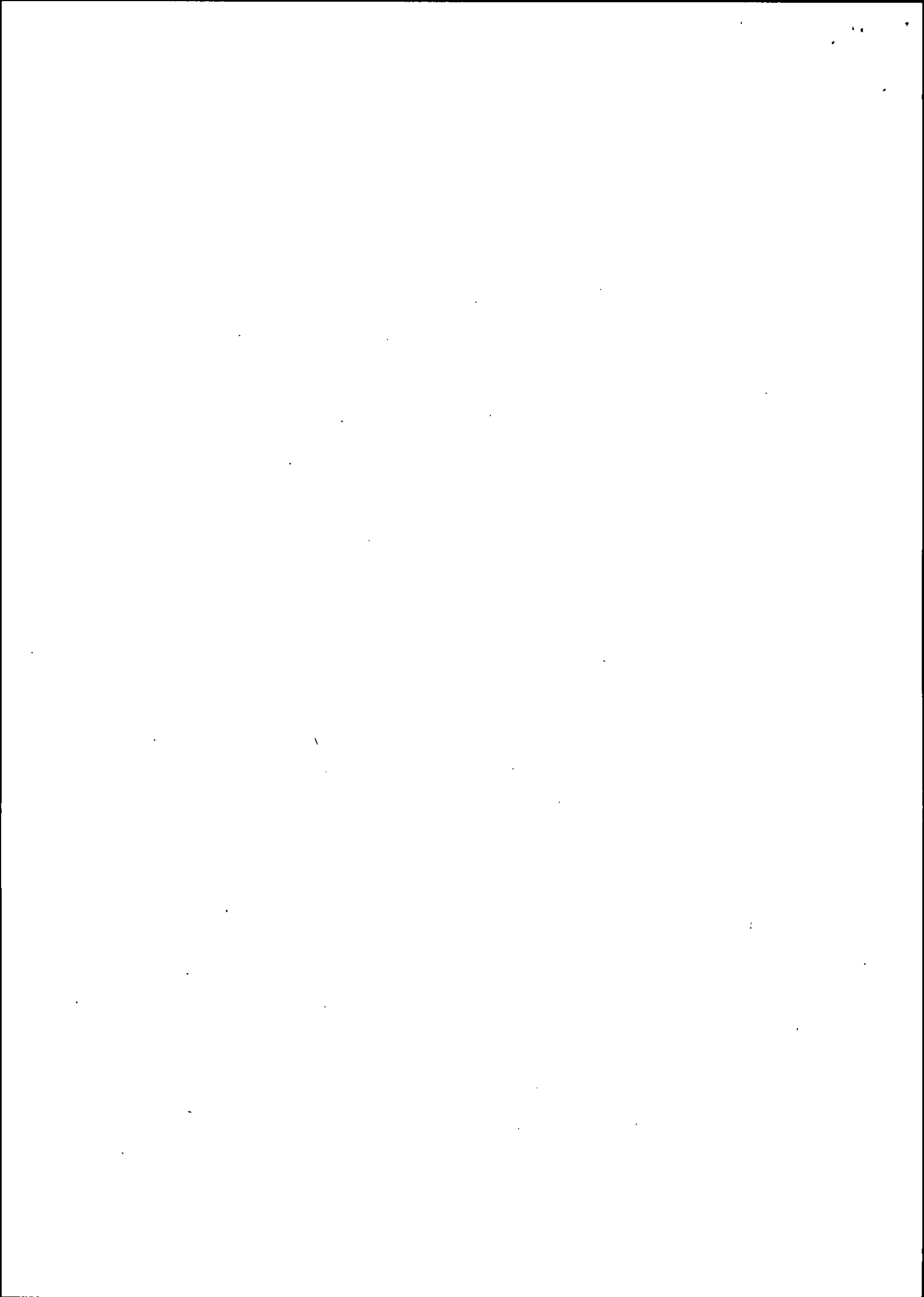
PRICE 7s 6d NET



MINISTRY OF AGRICULTURE, FISHERIES AND FOOD

**SEA FISHERIES  
STATISTICAL  
TABLES  
1966**

*LONDON*  
HER MAJESTY'S STATIONERY OFFICE  
1967



## FOREWORD

The Sea Fisheries Statistics for 1966 largely follow the revised layout of last year's publication. The tables are as far as possible on a United Kingdom basis with separate figures for England and Wales, Scotland and Northern Ireland.

The volume has been slightly re-arranged to accommodate two new tables; one showing annual estimates of consumption per head for fish (Table 10) and the other showing imports of fish and fish preparations by reference to the detailed Customs and Excise Statistical Classification (Table 14).

In some cases figures for the various parts of the United Kingdom are not strictly comparable and differences are explained in the headings and footnotes of the tables. More general definitions are given in the Explanatory Notes on Page 1.

These tables are intended to provide a broad picture of the United Kingdom fishing industry and its operations. Requests for more detailed information should be addressed to:—

The Secretary,  
Ministry of Agriculture, Fisheries and Food,  
(Fishery Statistics Section),  
Whitehall Place East,  
S.W.1.

# CONTENTS

Unless otherwise stated all tables relate to the United Kingdom with, where available, separate figures for England and Wales, Scotland and Northern Ireland.

<i>Table</i>	<b>Landings of Fish</b>	<i>Page</i>
1.	<b>Total supplies of fresh, chilled and frozen fish in 1938, 1948, 1951, 1960 and 1962-66:</b> Quantity and value of white fish, herring, total wet fish, shellfish and total all fish.	2-3
2.	<b>Landings by species:</b> Quantity and value of fresh and frozen fish landed by British and foreign fishing vessels in 1966.	4-5
3.	<b>Quantity and value of principal varieties of fresh and frozen fish landed by British and foreign fishing vessels in 1938, 1948, 1951, 1960 and 1962-66.</b>	6-9
4.	<b>Great Britain—British landings in 1966 by species at each major demersal port in England and Wales and district in Scotland..</b>	10-14
5.	<b>British landings of wet fish (excl. livers) in 1966 by region of capture.</b>	15-18
6.	<b>Fishing effort of British vessels in 1966 by region of capture and method of fishing:</b> Number of arrivals, hours fishing and days absent; average tonnage per voyage (England and Wales only); quantity and value of fish landed.	19-21
7.	<b>Landings by British distant water vessels (140 ft. and over registered length):</b> Quantity and value of landings at major ports in 1962-66.	22
8.	<b>Landings of fish frozen at sea by British vessels in 1965 and 1966:</b> Quantity only of main kinds of fish.	22
9.	<b>Great Britain—Average annual values of fish landed by British vessels in 1938, 1948, 1951, 1960 and 1962-66:</b> showing also separate figures for England and Wales and Scotland.	23-25

## Consumption Level Estimates

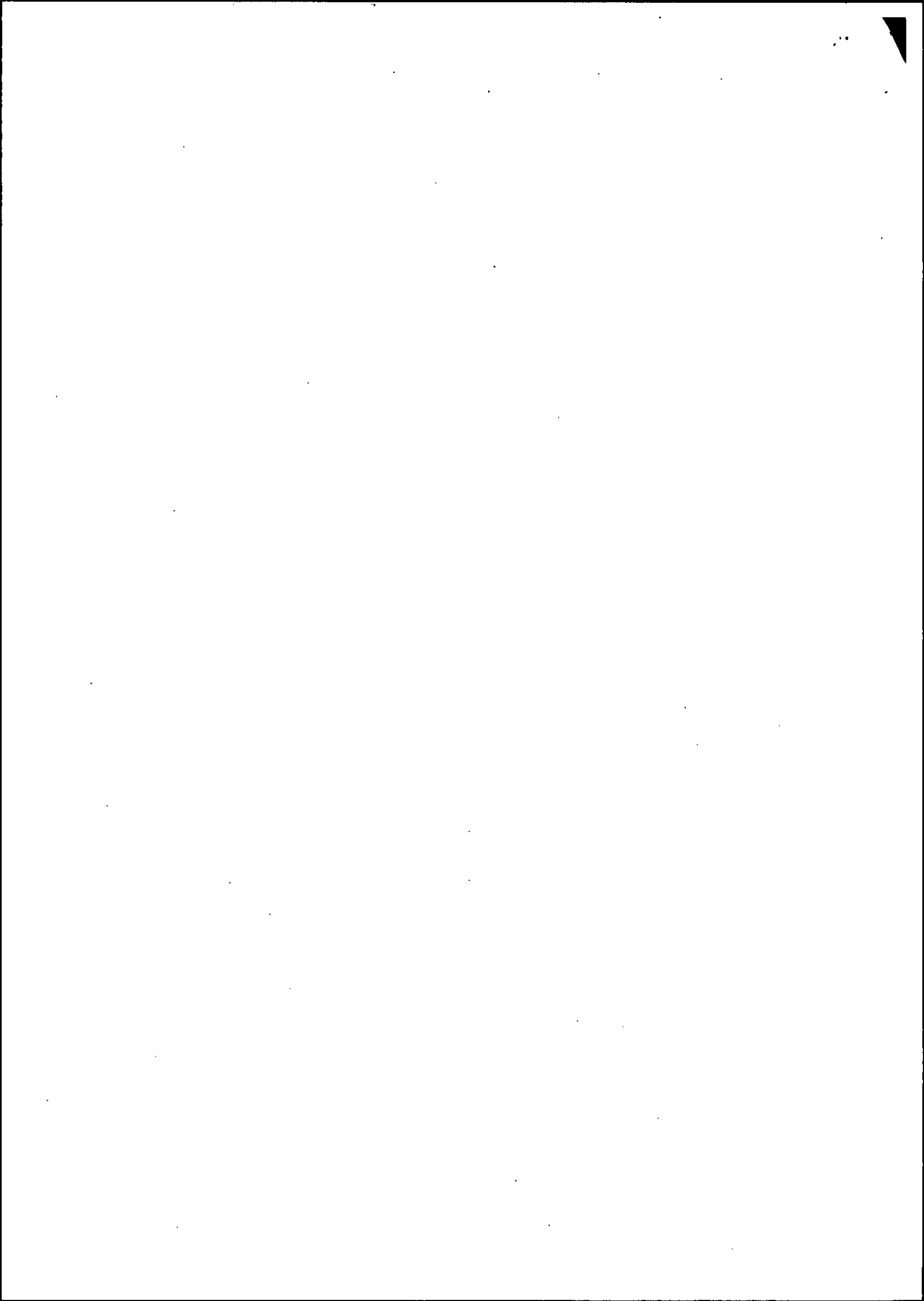
10.	<b>Supplies per head per annum of fish, moving into consumption in the United Kingdom pre-war and in 1948, 1951, 1955, 1960, 1962-66.</b>	26
-----	---	----

## Fishermen and Fishing Vessels

11.	<b>Employment of fishermen as at 31st December of each of the years 1938, 1948, 1951, 1960 and 1961-66.</b>	26
12.	<b>Age distribution by ports of vessels of 80 ft. and over registered length as at 31st December 1966.</b>	27
13.	<b>Fishing vessels by main ports as at 31st December 1966, with additional total U.K. figures for 1962-66:</b> Vessels subdivided according to method of capture, propulsion and registered length.	28-29

**International Trade of the United Kingdom with  
the Commonwealth Preference Area,  
E.F.T.A., E.E.C. and all other countries**

<i>Table</i>	<i>Page</i>
<b>14. Imports of fish and fish preparations in 1965 and 1966:</b> Quantity and value by Customs Statistical Classification.	30-31
<b>15. Imports of fish and fish preparations in 1965 and 1966:</b> Quantity by kinds of fish and fish preparations and main countries of consignment.	32-33
<b>16. Imports of fish and fish preparations in 1965 and 1966:</b> Value by kinds of fish and fish preparations and main countries of consignment.	34-35
<b>17. Imports of fish and marine mammal products in 1965 and 1966:</b> Quantity and value by kinds of products (meals and flours, oils and whale meat) and main countries of consignment.	36
<b>18. Exports of fish and fish preparations in 1965 and 1966:</b> Quantity and value by kinds of fish and fish preparations and main countries of destination.	37
<b>19. Export of fish and marine mammal products in 1965 and 1966:</b> Quantity and value by kinds of products (oils and meals) and main countries of destination.	38





## EXPLANATORY NOTES

1. The various species of fish are divided into three main groups: demersal, pelagic and shellfish. The names of the kinds of fish included in each group, are shown in table 2.
2. The term "wet fish" covers both demersal and pelagic fish (in fresh, chilled or frozen form) but excludes shellfish.
3. The figures of "fish livers" are expressed as the raw equivalent of any liver oils landed.
4. The average values of fish quoted in table 9 are those realised at first-hand sales and apply to all fish sold regardless of the use for which it is destined.
5. The term "British landings" relates to the landings of British registered fishing vessels.

## FISHING REGIONS

### A. Statistical Area (part) of the International Council for the Exploration of the Sea (I.C.E.S.)

- |  |  |
|--|--|
| <b>I. Barents Sea and Murman Coast</b>                       | <b>VI. West of Scotland and Rockall</b>  |
| <b>II. Northward of Norwegian Coast</b>                      | VIa. West of Scotland                    |
| IIa. Norwegian Coast   | VIb. Rockall                             |
| IIb. Bear Island and Spitzbergen                             | <b>VII. West of Ireland and Channels</b> |
| <b>III. Skagerrak, Kattegat, The Sound, Belts and Baltic</b> | VIIa. Irish Sea                          |
| IIIa. Skagerrak and Kattegat                                 | VIIb. West of Ireland                    |
| <b>IV. North Sea</b>   | VIIc. Porcupine Bank                     |
| IVa. Northern North Sea                                      | VIId. English Channel, East              |
| IVb. Middle North Sea  | VIIf. English Channel, West              |
| IVc. Southern North Sea                                      | VIIf. Bristol Channel                    |
| <b>V. Iceland and Faroes</b>                                 | VIIg. South-East Ireland                 |
| Va. Iceland  | VIIh. Little Sole Bank                   |
| Vb. Faroe  | VIIj. Great Sole Bank                    |
|  | VIIk. West of Great Sole Bank            |
|  | <b>XIV. East Coast of Greenland.</b>     |

### B. Statistical Area of the International Commission for the North-West Atlantic Fisheries (I.C.N.A.F.)

1. West Coast of Greenland
2. Labrador
3. Grand Banks, Newfoundland
4. Gulf of St. Lawrence
5. Gulf of Maine and Georges Bank

## Landings of Fish

### TABLE I

#### UNITED KINGDOM TOTAL SUPPLIES OF FRESH, CHILLED AND FROZEN FISH\*

**1938**

	White Fish		Herring		Total Wet Fish		Shellfish		Total All Fish	
	cwt 000's	£ 000's	cwt 000's	£ 000's	cwt 000's	£ 000's	cwt 000's	£ 000's	cwt 000's	£ 000's
<b>Landings by British vessels</b>										
England and Wales . . . . .	12,946	11,429	2,587	804	15,533	12,233	532	409	16,065	12,642
Scotland . . . . .	2,580	2,763	2,801	1,063	5,381	3,826	92	80	5,473	3,906
Northern Ireland . . . . .	30	28	35	12	65	40	7	5	72	45
<b>United Kingdom</b> . . . . .	<b>15,556</b>	<b>14,220</b>	<b>5,423</b>	<b>1,879</b>	<b>20,979</b>	<b>16,099</b>	<b>631</b>	<b>494</b>	<b>21,610</b>	<b>16,593</b>
<b>Imports</b> . . . . .	<b>1,477</b>	<b>2,371</b>	<b>400</b>	<b>202</b>	<b>1,877</b>	<b>2,573</b>	<b>208</b>	<b>349</b>	<b>2,085</b>	<b>2,922</b>
<b>Total Supplies</b> . . . . .	<b>17,033</b>	<b>16,591</b>	<b>5,823</b>	<b>2,081</b>	<b>22,856</b>	<b>18,672</b>	<b>839</b>	<b>843</b>	<b>23,695</b>	<b>19,515</b>

**1948**

<b>Landings by British vessels</b>										
England and Wales . . . . .	12,082	31,511	2,358	2,299	14,440	33,810	476	988	14,916	34,798
Scotland . . . . .	3,494	8,529	2,913	3,079	6,407	11,608	83	430	6,490	12,038
Northern Ireland . . . . .	142	303	50	50	192	353	5	13	197	366
<b>United Kingdom</b> . . . . .	<b>15,718</b>	<b>40,343</b>	<b>5,321</b>	<b>5,428</b>	<b>21,039</b>	<b>45,771</b>	<b>564</b>	<b>1,431</b>	<b>21,603</b>	<b>47,202</b>
<b>Imports</b> . . . . .	<b>3,620</b>	<b>11,481</b>	<b>699</b>	<b>780</b>	<b>4,319</b>	<b>12,261</b>	<b>151</b>	<b>512</b>	<b>4,470</b>	<b>12,773</b>
<b>Total Supplies</b> . . . . .	<b>19,338</b>	<b>51,824</b>	<b>6,020</b>	<b>6,208</b>	<b>25,358</b>	<b>58,032</b>	<b>715</b>	<b>1,943</b>	<b>26,073</b>	<b>59,975</b>

**1951**

<b>Landings by British vessels</b>										
England and Wales . . . . .	12,515	32,858	1,486	1,618	14,001	34,476	463	880	14,464	35,356
Scotland . . . . .	3,087	8,848	1,797	2,010	4,884	10,859	88	296	4,972	11,155
Northern Ireland . . . . .	56	105	48	53	104	158	2	4	106	162
<b>United Kingdom</b> . . . . .	<b>15,658</b>	<b>41,811</b>	<b>3,331</b>	<b>3,681</b>	<b>18,989</b>	<b>45,493</b>	<b>553</b>	<b>1,180</b>	<b>19,542</b>	<b>46,673</b>
<b>Imports</b> . . . . .	<b>2,808</b>	<b>9,902</b>	<b>448</b>	<b>561</b>	<b>3,256</b>	<b>10,463</b>	<b>142</b>	<b>493</b>	<b>3,398</b>	<b>10,956</b>
<b>Total Supplies</b> . . . . .	<b>18,466</b>	<b>51,713</b>	<b>3,779</b>	<b>4,242</b>	<b>22,245</b>	<b>55,956</b>	<b>695</b>	<b>1,673</b>	<b>22,940</b>	<b>57,629</b>

**1960**

<b>Landings by British vessels</b>										
England and Wales . . . . .	10,392	36,481	332	583	10,724	37,064	398	1,080	11,122	38,144
Scotland . . . . .	3,429	11,912	1,762	1,882	5,191	13,794	141	951	5,332	14,745
Northern Ireland . . . . .	44	69	91	50	135	119	13	48	148	167
<b>United Kingdom</b> . . . . .	<b>13,865</b>	<b>48,462</b>	<b>2,185</b>	<b>2,515</b>	<b>16,050</b>	<b>50,977</b>	<b>552</b>	<b>2,079</b>	<b>16,602</b>	<b>53,056</b>
<b>Imports</b> . . . . .	<b>2,285</b>	<b>12,281</b>	<b>311</b>	<b>574</b>	<b>2,596</b>	<b>12,855</b>	<b>99</b>	<b>1,035</b>	<b>2,695</b>	<b>13,890</b>
<b>Total Supplies</b> . . . . .	<b>16,150</b>	<b>60,743</b>	<b>2,496</b>	<b>3,089</b>	<b>18,646</b>	<b>63,832</b>	<b>651</b>	<b>3,114</b>	<b>19,297</b>	<b>66,946</b>

\* Salmon and trout are excluded.

The quantity of boneless fish is expressed in terms of landed weight equivalents (head on, gutted). The actual weight of imported boneless fish is shown in tables 14 and 15. Imports include semi-preserved (salted, in brine, dried or smoked) fish.

**TABLE I**  
—concluded

**UNITED KINGDOM**  
**Total Supplies of Fresh, Chilled and Frozen Fish\***

**1962**

	White Fish		Herring		Total Wet Fish		Shellfish		Total All Fish	
	cwt 000's	£ 000's	cwt 000's	£ 000's	cwt 000's	£ 000's	cwt 000's	£ 000's	cwt 000's	£ 000's
<b>Landings by British vessels</b>										
England and Wales . . . . .	10,213	34,312	272	641	1,0485	34,953	389	1,068	10,874	36,021
Scotland . . . . .	3,599	11,676	1,487	2,091	5,086	13,767	183	1,319	5,269	15,086
Northern Ireland . . . . .	113	97	34	45	147	142	19	74	166	216
<b>United Kingdom . . . . .</b>	<b>13,925</b>	<b>46,085</b>	<b>1,793</b>	<b>2,777</b>	<b>15,718</b>	<b>48,862</b>	<b>591</b>	<b>2,461</b>	<b>16,309</b>	<b>51,323</b>
<b>Imports . . . . .</b>	<b>2,816</b>	<b>13,378</b>	<b>181</b>	<b>357</b>	<b>2,997</b>	<b>13,735</b>	<b>128</b>	<b>2,845</b>	<b>3,125</b>	<b>16,580</b>
<b>Total Supplies . . . . .</b>	<b>16,741</b>	<b>59,463</b>	<b>1,974</b>	<b>3,134</b>	<b>18,715</b>	<b>62,597</b>	<b>719</b>	<b>5,306</b>	<b>19,434</b>	<b>67,903</b>

**1963**

<b>Landings by British vessels</b>										
England and Wales . . . . .	9,756	35,471	481	761	10,237	36,232	325	1,029	10,562	37,261
Scotland . . . . .	4,294	12,773	1,567	1,931	5,861	14,704	200	1,364	6,061	16,068
Northern Ireland . . . . .	70	84	47	41	117	125	31	129	148	254
<b>United Kingdom . . . . .</b>	<b>14,120</b>	<b>48,328</b>	<b>2,095</b>	<b>2,733</b>	<b>16,215</b>	<b>51,061</b>	<b>556</b>	<b>2,522</b>	<b>16,771</b>	<b>53,583</b>
<b>Imports . . . . .</b>	<b>2,605</b>	<b>13,211</b>	<b>202</b>	<b>368</b>	<b>2,807</b>	<b>13,579</b>	<b>119</b>	<b>2,683</b>	<b>2,926</b>	<b>16,262</b>
<b>Total Supplies . . . . .</b>	<b>16,725</b>	<b>61,539</b>	<b>2,297</b>	<b>3,101</b>	<b>19,022</b>	<b>64,640</b>	<b>675</b>	<b>5,205</b>	<b>19,697</b>	<b>69,845</b>

**1964**

<b>Landings by British vessels</b>										
England and Wales . . . . .	9,603	37,428	352	732	9,955	38,160	312	1,220	10,267	39,380
Scotland . . . . .	4,657	14,004	1,579	1,959	6,236	15,963	216	1,589	6,452	17,552
Northern Ireland . . . . .	123	131	27	32	150	163	31	136	181	299
<b>United Kingdom . . . . .</b>	<b>14,383</b>	<b>51,563</b>	<b>1,958</b>	<b>2,723</b>	<b>16,341</b>	<b>54,286</b>	<b>559</b>	<b>2,945</b>	<b>16,900</b>	<b>57,231</b>
<b>Imports . . . . .</b>	<b>3,236</b>	<b>17,524</b>	<b>163</b>	<b>318</b>	<b>3,399</b>	<b>17,842</b>	<b>159</b>	<b>3,631</b>	<b>3,558</b>	<b>21,473</b>
<b>Total Supplies . . . . .</b>	<b>17,619</b>	<b>69,087</b>	<b>2,121</b>	<b>3,041</b>	<b>19,740</b>	<b>72,128</b>	<b>718</b>	<b>6,576</b>	<b>20,458</b>	<b>78,704</b>

**1965**

<b>Landings by British vessels</b>										
England and Wales . . . . .	9,865	39,708	301	621	10,166	40,329	332	1,202	10,498	41,531
Scotland . . . . .	5,723	15,230	1,628	2,277	7,351	17,507	192	1,657	7,543	19,164
Northern Ireland . . . . .	134	134	34	32	168	166	23	98	191	264
<b>United Kingdom . . . . .</b>	<b>15,722</b>	<b>55,072</b>	<b>1,963</b>	<b>2,930</b>	<b>17,685</b>	<b>58,002</b>	<b>547</b>	<b>2,957</b>	<b>18,232</b>	<b>60,959</b>
<b>Imports . . . . .</b>	<b>3,378</b>	<b>20,079</b>	<b>117</b>	<b>263</b>	<b>3,495</b>	<b>20,342</b>	<b>156</b>	<b>3,653</b>	<b>3,651</b>	<b>23,995</b>
<b>Total Supplies . . . . .</b>	<b>19,100</b>	<b>75,151</b>	<b>2,080</b>	<b>3,193</b>	<b>21,180</b>	<b>78,344</b>	<b>703</b>	<b>6,610</b>	<b>21,883</b>	<b>84,954</b>

**1966**

<b>Landings by British vessels</b>										
England and Wales . . . . .	9,665	38,764	256	450	9,921	39,214	418	1,554	10,339	40,768
Scotland . . . . .	6,008	16,366	1,998	2,401	8,006	18,767	222	1,928	8,228	20,695
Northern Ireland . . . . .	85	130	17	25	102	155	31	148	133	303
<b>United Kingdom . . . . .</b>	<b>15,758</b>	<b>55,260</b>	<b>2,271</b>	<b>2,876</b>	<b>18,029</b>	<b>58,136</b>	<b>671</b>	<b>3,630</b>	<b>18,700</b>	<b>61,766</b>
<b>Imports . . . . .</b>	<b>2,967</b>	<b>18,212</b>	<b>152</b>	<b>365</b>	<b>3,119</b>	<b>18,577</b>	<b>133</b>	<b>4,410</b>	<b>3,252</b>	<b>22,987</b>
<b>Total Supplies . . . . .</b>	<b>18,725</b>	<b>73,472</b>	<b>2,423</b>	<b>3,241</b>	<b>21,148</b>	<b>76,713</b>	<b>804</b>	<b>8,040</b>	<b>21,952</b>	<b>84,753</b>

\* Salmon and trout are excluded.

The quantity of boneless fish is expressed in terms of landed weight equivalent (head on, gutted). The actual weight of imported boneless fish is shown in tables 14 and 15. Imports include semi-preserved (salted, in brine, dried or smoked) fish.

TABLE 2

**UNITED KINGDOM  
LANDINGS BY SPECIES**  
Quantity of Fresh and Frozen Fish landed by British and Foreign fishing vessels in 1966

KIND OF FISH	BRITISH VESSELS				FOREIGN VESSELS*			TOTAL
	England and Wales	Scotland	Northern Ireland	United Kingdom	England and Wales	Scotland	United Kingdom	United Kingdom
	'000 cwt.	'000 cwt.	'000 cwt.	'000 cwt.	'000 cwt.	'000 cwt.	'000 cwt.	'000 cwt.
Bream	6	—	—	6	...	—	...	6
Brill	6	...	...	6	...	—	...	6
Carfish	121	9	—	130	7	...	7	137
Cod	5,484	913	16	6,413	502	19	521	6,934
Conger Eels	8	2	1	11	...	—	...	11
Dabs, long rough	1	12	...	39	...	...	3	42
Dabs, other	26	...	...	...	3	...	...	...
Dogfish	95	99	3	197	2	1	3	200
Dory	...	—	—	...	...	—	...	...
Flounders or Flukes	4	1	...	5	...	—	...	5
Gurnards	15	2	1	18	...	...	...	18
Haddock	1,094	1,901	1	2,996	110	27	137	3,133
Hake	52	46	3	101	...	...	...	101
Halibut	30	20	—	50	3	...	3	53
Lemon Soles	52	58	—	110	10	...	10	120
Ling	53	28	—	81	7	1	8	89
Megrims	6	17	1	24	...	...	...	24
Monks or Anglers	20	47	—	67	1	...	1	68
Mullet, grey	...	—	—	...	—	—	—	...
Mullet, red	...	—	—	...	—	—	—	...
Plaice	669	123	4	796	61	...	61	857
Pollock (Lythe)	7	6	—	13	...	...	...	13
Redfish	255	5	—	260	13	...	13	273
Saithe	711	177	3	891	18	1	19	910
Skates and Rays	125	98	1	224	9	1	10	234
Soles	28	—	...	28	3	—	3	31
Torsk (Tusk)	11	14	—	25	11	4	15	40
Turbot	22	8	—	30	1	...	1	31
Whiting	134	891	40	1,065	9	3	12	1,077
Witches	3	18	...	21	...	...	...	21
Other Demersal	113	3	3	119	26	2	28	147
Fish Livers	263	72	—	335	1	—	1	336
Fish Roes	14	12	1	27	1	...	1	28
<b>Total Demersal</b>	<b>9,428</b>	<b>4,582</b>	<b>78</b>	<b>14,088</b>	<b>798</b>	<b>59</b>	<b>857</b>	<b>14,945</b>
Herring	256	1,998	17	2,271	...	38	38	2,309
Mackerel	39	26	2	67	3	8	11	78
Pilchards	27	—	—	27	—	—	—	27
Sprats	166	1,400	5	1,571	—	—	—	1,571
Whitebait	1	—	—	1	—	—	—	1
Other Pelagic	4	...	—	4	...	—	...	4
<b>Total Pelagic</b>	<b>493</b>	<b>3,424</b>	<b>24</b>	<b>3,941</b>	<b>3</b>	<b>46</b>	<b>49</b>	<b>3,990</b>
<b>Total Wet Fish</b>	<b>9,921</b>	<b>8,006</b>	<b>102</b>	<b>18,029</b>	<b>801</b>	<b>105</b>	<b>906</b>	<b>18,935</b>
Oysters (b)	5	—	—	5	—	—	—	5
Crabs	56	37	...	93	—	—	—	93
Crawfish	2	(a)	(a)	2	—	—	—	2
Lobsters	8	12	...	20	...	—	...	20
Cockles	186	(a)	(a)	186	—	—	—	186
Escallops and Queens	2	12	1	15	...	—	...	15
Mussels	63	9	—	72	—	—	—	72
Nephrops	21	125	27	173	...	—	...	173
Periwinkles	9	23	3	35	—	—	—	35
Shrimps	27	2	—	29	—	—	—	29
Squids	1	1	...	2	...	—	...	2
Whelks	38	(a)	(a)	38	...	—	...	38
Other Shellfish	...	1	...	1	...	—	...	1
<b>Total Shellfish</b>	<b>418</b>	<b>222</b>	<b>31</b>	<b>671</b>	<b>...</b>	<b>—</b>	<b>...</b>	<b>671</b>
<b>Total All Fish</b>	<b>10,339</b>	<b>8,228</b>	<b>133</b>	<b>18,700</b>	<b>801</b>	<b>105</b>	<b>906</b>	<b>19,606</b>

(a) Landings were either nil or not separately recorded and included with 'Other'.

(b) The weight of oysters is calculated on the basis of one cwt. being equal to 800 oysters in England and Wales.

\* Includes landings, direct from fishing grounds, by (1) foreign fishing vessels and carriers in England and Wales and (2) foreign fishing vessels only in Scotland. Total imports, which combine landings by fishing vessels, carriers and cargo vessels, are shown by quantity in tables 14 and 15.

TABLE 2  
—concluded

UNITED KINGDOM  
LANDINGS BY SPECIES  
Value of Fresh and Frozen Fish Landed by British and Foreign Fishing Vessels in 1966

KIND OF FISH	BRITISH VESSELS				FOREIGN VESSELS*			TOTAL
	England and Wales	Scotland	Northern Ireland	United Kingdom	England and Wales	Scotland	United Kingdom	United Kingdom
	£'000	£'000	£'000	£'000	£'000	£'000	£'000	£'000
Bream . . . . .	25	—	—	25	...	—	...	25
Brill . . . . .	57	2	1	60	3	—	3	63
Catfish . . . . .	306	21	—	327	17	1	18	345
Cod . . . . .	21,310	3,748	46	25,104	1,948	81	2,029	27,133
Conger Eels . . . . .	26	6	...	32	...	—	...	32
Dabs, long rough . . . . .	1	46	...	135	11	...	11	146
Dabs, other . . . . .	88	—	—	—	—	—	—	88
Dogfish . . . . .	306	193	1	500	7	1	8	508
Dory . . . . .	2	—	—	2	...	—	...	2
Flounders or Flukes . . . . .	9	1	...	10	...	—	...	10
Gurnards . . . . .	28	2	...	30	...	...	...	30
Haddock . . . . .	4,801	6,029	2	10,832	541	107	648	11,480
Hake . . . . .	780	406	7	1,193	1	4	5	1,198
Halibut . . . . .	469	341	—	810	40	12	52	862
Lemon Soles . . . . .	509	621	—	1,130	94	1	95	1,225
Ling . . . . .	132	77	...	209	17	4	21	230
Megrim . . . . .	34	74	1	109	1	...	1	110
Monks or Anglers . . . . .	71	182	—	253	2	2	4	257
Mullet, grey . . . . .	3	—	—	3	—	—	—	3
Mullet, red . . . . .	1	—	—	1	...	—	...	1
Plaice . . . . .	5,125	835	15	5,975	425	2	427	6,402
Pollock (Lythe) . . . . .	32	20	—	52	1	—	1	53
Redfish . . . . .	402	8	—	410	24	...	24	434
Saithe . . . . .	1,322	254	5	1,581	37	2	39	1,620
Skates and Rays . . . . .	680	393	2	1,075	50	3	53	1,128
Soles . . . . .	631	—	1	632	68	—	68	700
Torsk (Tusk) . . . . .	23	32	—	55	21	9	30	85
Turbot . . . . .	359	116	—	475	16	...	16	491
Whiting . . . . .	298	2,209	42	2,549	17	8	25	2,574
Witches . . . . .	11	78	...	89	1	1	2	91
Other Demersal . . . . .	383	12	3	398	16	...	16	414
Fish Livers . . . . .	201	40	—	241	1	—	1	242
Fish Roes . . . . .	62	60	...	122	3	...	3	125
<b>Total Demersal . . . . .</b>	<b>38,487</b>	<b>15,806</b>	<b>126</b>	<b>54,419</b>	<b>3,362</b>	<b>238</b>	<b>3,600</b>	<b>58,019</b>
Herring . . . . .	450	2,401	25	2,876	...	57	57	2,933
Mackerel . . . . .	121	36	2	159	6	15	21	180
Pilchards . . . . .	36	—	—	36	—	—	—	36
Sprats . . . . .	109	524	2	635	—	—	—	635
Whitebait . . . . .	6	—	—	6	—	—	—	6
Other Pelagic . . . . .	5	...	—	5	...	...	...	5
<b>Total Pelagic . . . . .</b>	<b>727</b>	<b>2,961</b>	<b>29</b>	<b>3,717</b>	<b>6</b>	<b>72</b>	<b>78</b>	<b>3,795</b>
<b>Total Wet Fish . . . . .</b>	<b>39,214</b>	<b>18,767</b>	<b>155</b>	<b>58,136</b>	<b>3,368</b>	<b>310</b>	<b>3,678</b>	<b>61,814</b>
Oysters . . . . .	88	—	—	88	—	—	—	88
Crabs . . . . .	289	106	...	395	—	—	—	395
Crawfish . . . . .	56	(a)	(a)	56	—	—	—	56
Lobsters . . . . .	379	560	10	949	...	—	...	949
Cockles . . . . .	136	(a)	(a)	136	—	—	—	136
Escallops and Queens . . . . .	5	79	6	90	...	—	...	90
Mussels . . . . .	55	7	—	62	—	—	—	62
Nephrops . . . . .	232	1,116	128	1,476	1	—	1	1,477
Periwinkles . . . . .	19	45	4	68	—	—	—	68
Shrimps . . . . .	207	12	—	219	—	—	—	219
Squids . . . . .	7	1	...	8	...	—	...	8
Whelks . . . . .	77	(a)	(a)	77	...	—	...	77
Other Shellfish . . . . .	4	2	...	6	5	—	5	11
<b>Total Shellfish . . . . .</b>	<b>1,554</b>	<b>1,928</b>	<b>148</b>	<b>3,630</b>	<b>6</b>	<b>—</b>	<b>6</b>	<b>3,636</b>
<b>Total All Fish . . . . .</b>	<b>40,768</b>	<b>20,695</b>	<b>303</b>	<b>61,766</b>	<b>3,374</b>	<b>310</b>	<b>3,684</b>	<b>65,450</b>

(a) Landings were either nil or not separately recorded and included with 'Other'.

\* Includes landings, direct from fishing grounds, by (1) foreign fishing vessels and carriers in England and Wales and (2) foreign fishing vessels only in Scotland. Total imports, which combine landings by fishing vessels, carriers and cargo vessels, are shown by value in tables 14 and 16.

TABLE 3

## UNITED KINGDOM

Quantity and Value of Principal Varieties of Fresh and Frozen Fish Landed by British and Foreign Fishing Vessels in 1938, 1948, 1951, 1960 and 1962-66

	Cod		Haddock		Hake		Halibut		Lemon Soles	
	cwt. 000's	£ 000's	cwt. 000's	£ 000's	cwt. 000's	£ 000's	cwt. 000's	£ 000's	cwt. 000's	£ 000's
<b>England and Wales</b>										
1938	6,446	4,239	1,833	1,696	640	1,184	62	248	84	261
1948	6,083	13,921	1,418	3,877	675	3,158	48	390	15	83
1951	6,826	15,097	1,524	4,608	400	2,829	53	516	49	328
1960	5,380	17,784	1,548	5,769	153	1,618	52	629	54	422
1962	5,518	16,514	1,644	6,046	139	1,365	34	460	51	422
1963	5,409	18,269	1,208	5,268	124	1,348	34	455	52	419
1964	4,978	19,222	1,213	5,385	105	1,320	33	441	54	491
1965	5,296	21,110	1,220	5,397	82	1,077	42	550	60	581
1966	5,484	21,310	1,094	4,801	52	780	30	469	52	509
<b>Scotland</b>										
1938	548	507	1,025	1,035	34	60	33	119	68	243
1948	671	1,266	1,157	2,868	77	351	67	549	50	273
1951	614	1,655	831	2,732	84	509	70	555	62	454
1960	807	2,970	1,140	3,990	47	331	39	448	60	532
1962	781	2,663	1,061	3,627	90	511	33	426	66	590
1963	913	3,275	1,201	4,135	76	593	26	353	59	571
1964	911	3,841	1,739	4,833	51	557	24	368	52	547
1965	929	3,913	2,097	5,451	47	486	23	364	57	580
1966	913	3,748	1,901	6,029	46	406	20	341	58	621
<b>Northern Ireland</b>										
1938	2	2	2	2	—	—	—	—	—	—
1948	10	19	1	1	—	—	—	—	—	—
1951	6	14	—	—	—	—	—	—	—	—
1960	6	17	—	2	1	2	—	—	—	—
1962	5	11	—	—	3	9	—	—	—	—
1963	7	17	—	1	1	4	—	—	—	—
1964	13	30	1	2	1	4	—	—	—	—
1965	15	39	1	3	2	4	—	—	—	—
1966	16	46	1	2	3	7	—	—	—	—
<b>United Kingdom</b>										
1938	6,996	4,748	2,860	2,733	674	1,244	95	367	152	504
1948	6,764	15,206	2,576	6,746	752	3,509	115	939	65	356
1951	7,446	16,766	2,355	7,340	484	3,338	123	1,071	111	782
1960	6,193	20,771	2,688	9,761	201	1,951	91	1,077	114	954
1962	6,304	19,188	2,705	9,673	232	1,885	67	886	117	1,012
1963	6,329	21,561	2,409	9,404	201	1,945	60	808	111	990
1964	5,902	23,093	2,953	10,220	157	1,881	57	809	106	1,038
1965	6,240	25,063	3,318	10,851	131	1,567	65	914	117	1,161
1966	6,413	25,104	2,996	10,832	101	1,193	50	810	110	1,130
<b>Foreign Landings*</b>										
1938	165	101	71	73	11	16	5	17	8	26
1948	1,037	2,431	254	693	20	96	16	136	6	30
1951	933	n.a.	226	n.a.	4	n.a.	13	n.a.	10	n.a.
1960	522	1,713	249	977	2	14	7	71	5	41
1962	527	1,536	214	846	2	8	6	80	11	68
1963	435	1,441	193	928	1	8	4	61	8	64
1964	459	1,749	200	909	—	4	5	62	9	78
1965	390	1,545	147	665	—	1	4	53	9	79
1966	521	2,028	136	646	—	5	3	52	10	95
<b>Total Landings</b>										
1938	7,161	4,849	2,931	2,806	685	1,260	100	384	160	530
1948	7,801	17,637	2,830	7,439	772	3,605	131	1,075	71	386
1951	8,379	n.a.	2,581	n.a.	488	n.a.	136	n.a.	121	n.a.
1960	6,715	22,484	2,937	10,738	203	1,965	98	1,148	119	995
1962	6,831	20,724	2,919	10,519	234	1,893	73	966	128	1,080
1963	6,764	23,002	2,602	10,332	202	1,953	64	869	119	1,054
1964	6,361	24,842	3,153	11,129	157	1,885	62	871	115	1,116
1965	6,630	26,608	3,465	11,516	131	1,568	69	967	126	1,240
1966	6,934	27,132	3,132	11,478	101	1,198	53	862	120	1,225

n.a. = not available

\* Includes only landings by foreign fishing vessels direct from fishing grounds.

TABLE 3  
—continued

UNITED KINGDOM  
Quantity and Value of Principal Varieties of Fresh and Frozen Fish Landed by British  
and Foreign Fishing Vessels in 1938, 1948, 1951, 1960 and 1962-66

	Plaice		Redfish		Saiche (Coalfish)		Skates and Rays		Soles	
	cwt. 000's	£ 000's	cwt. 000's	£ 000's	cwt. 000's	£ 000's	cwt. 000's	£ 000's	cwt. 000's	£ 000's
<b>England and Wales</b>										
1938	462	1,889	74	22	555	146	344	413	62	409
1948	695	3,609	209	315	578	773	289	636	59	600
1951	477	2,961	288	402	555	677	287	970	78	818
1960	606	4,112	362	523	641	1,304	182	725	44	719
1962	595	3,927	335	468	449	999	171	727	47	820
1963	683	4,172	336	491	476	927	176	753	74	900
1964	697	4,698	334	538	645	1,183	157	712	26	704
1965	660	4,926	306	508	731	1,364	148	728	24	664
1966	669	5,125	255	402	711	1,322	125	680	28	631
<b>Scotland</b>										
1938	70	175	†	†	66	18	84	71	—	—
1948	84	427	†	†	92	98	115	236	—	—
1951	87	541	6	7	84	72	100	246	—	—
1960	114	701	3	3	90	139	116	334	—	—
1962	114	676	8	11	114	200	98	302	—	—
1963	111	630	6	10	144	199	92	306	—	—
1964	122	680	10	14	178	247	108	367	—	—
1965	121	764	12	17	205	292	101	381	—	—
1966	123	835	5	8	177	254	98	393	—	—
<b>Northern Ireland</b>										
1938	5	9	—	—	2	1	2	1	...	....
1948	5	15	—	—	3	5	1	2	...	...
1951	1	5	—	—	3	4	...	1	—	—
1960	1	4	—	—	2	3	1	1	—	—
1962	1	6	—	—	3	4	...	1	—	—
1963	2	10	—	—	2	3	1	1	—	—
1964	4	14	—	—	2	4	1	1	—	—
1965	5	14	—	—	3	4	2	3	...	...
1966	4	15	—	—	3	5	1	2	...	1
<b>United Kingdom</b>										
1938	537	2,073	74	22	623	165	430	485	62	409
1948	784	4,051	209	315	673	876	405	874	59	600
1951	565	3,507	294	409	642	753	387	1,217	78	818
1960	721	4,817	365	526	733	1,446	299	1,060	44	719
1962	710	4,609	343	479	566	1,203	269	1,030	47	820
1963	796	4,812	342	501	622	1,129	269	1,060	74	900
1964	823	5,392	344	552	825	1,434	266	1,080	26	704
1965	786	5,703	318	525	939	1,660	251	1,112	24	664
1966	796	5,975	260	410	891	1,581	224	1,075	28	632
<b>Foreign Landings*</b>										
1938	65	199	2	1	14	5	13	16	1	9
1948	421	2,017	100	185	339	471	14	30	2	18
1951	119	n.a.	65	n.a.	130	n.a.	9	n.a.	2	n.a.
1960	63	441	39	61	51	99	20	68	3	57
1962	43	280	44	64	34	71	18	69	3	48
1963	42	241	28	46	29	57	14	51	2	31
1964	63	362	36	62	28	45	20	85	6	164
1965	58	373	25	45	16	31	13	62	5	174
1966	61	427	13	24	19	39	10	53	3	68
<b>Total Landings</b>										
1938	602	2,272	76	23	637	170	443	501	63	418
1948	1,205	6,068	309	500	1,012	1,347	419	904	61	618
1951	684	n.a.	359	n.a.	772	n.a.	396	n.a.	80	n.a.
1960	784	5,258	404	587	784	1,545	319	1,128	47	776
1962	753	4,889	387	543	600	1,274	287	1,099	50	868
1963	838	5,053	370	547	651	1,186	283	1,111	76	931
1964	886	5,754	380	614	853	1,479	286	1,165	32	868
1965	844	6,076	343	570	955	1,691	264	1,174	29	838
1966	857	6,402	273	434	910	1,620	234	1,128	31	700

n.a. = not available

\* Includes only landings by foreign fishing vessels direct from fishing grounds.

**TABLE 3**  
—continued

**UNITED KINGDOM**  
Quantity and Value of Principal Varieties of Fresh and Frozen Fish Landed by British and Foreign Fishing Vessels in 1938, 1948, 1951, 1960 and 1962-66

	Whiting		Other Demersal		Total Demersal Fish		Herring		Other Pelagic	
	cwt. 000's	£ 000's	cwt. 000's	£ 000's	cwt. 000's	£ 000's	cwt. 000's	£ 000's	cwt. 000's	£ 000's
<b>England and Wales</b>										
1938	269	203	1,814	591	12,645	11,301	2,587	804	301	128
1948	279	571	1,567	3,273	11,915	31,206	2,358	2,299	167	305
1951	255	580	1,498	2,768	12,290	32,554	1,486	1,618	225	304
1960	168	432	1,049	2,238	10,239	36,275	332	583	153	206
1962	170	384	866	1,941	10,019	34,073	272	641	194	239
1963	161	336	821	1,879	9,554	35,217	481	761	202	254
1964	141	301	860	2,127	9,243	37,122	352	732	360	306
1965	142	267	895	2,273	9,606	39,445	301	621	259	263
1966	134	298	794	2,160	9,428	38,487	256	450	237	277
<b>Scotland</b>										
1938	321	272	255	242	2,504	2,742	2,801	1,063	76	21
1948	667	1,409	377	881	3,357	8,358	2,913	3,079	137	171
1951	691	1,356	354	659	2,983	8,786	1,797	2,010	104	63
1960	595	1,600	356	792	3,367	11,840	1,762	1,882	62	72
1962	704	1,725	336	800	3,405	11,531	1,487	2,091	194	145
1963	687	1,705	333	806	3,648	12,583	1,567	1,931	646	190
1964	623	1,407	390	970	4,208	13,831	1,579	1,959	449	173
1965	794	1,469	378	1,091	4,764	14,808	1,628	2,277	959	422
1966	891	2,209	350	962	4,582	15,806	1,998	2,401	1,426	560
<b>Northern Ireland</b>										
1938	17	12	...	1	30	28	35	12	—	—
1948	120	250	2	11	142	303	50	50	—	—
1951	36	59	10	22	56	105	48	53	—	—
1960	28	37	5	3	44	69	91	50	—	—
1962	95	63	5	2	112	96	34	45	1	1
1963	50	44	5	3	68	83	47	41	2	1
1964	53	53	12	8	87	116	27	32	36	15
1965	37	32	10	7	75	106	34	32	59	28
1966	40	42	10	6	78	126	17	25	7	4
<b>United Kingdom</b>										
1938	607	487	2,069	834	15,179	14,071	5,423	1,879	377	149
1948	1,066	2,230	1,946	4,165	15,414	39,867	5,321	5,428	304	476
1951	982	1,995	1,862	3,449	15,329	41,445	3,331	3,681	329	367
1960	791	2,069	1,410	3,033	13,650	48,184	2,185	2,515	215	278
1962	969	2,172	1,207	2,743	13,536	45,700	1,793	2,777	389	385
1963	898	2,085	1,159	2,688	13,270	47,883	2,095	2,733	850	445
1964	817	1,761	1,262	3,105	13,538	51,069	1,958	2,723	845	494
1965	973	1,768	1,283	3,371	14,445	54,359	1,963	2,930	1,277	713
1966	1,065	2,549	1,154	3,128	14,088	54,419	2,271	2,876	1,670	841
<b>Foreign Landings*</b>										
1938	11	11	75	89	441	563	7	1	1	1
1948	30	61	191	379	2,430	6,547	6	5	31	89
1951	17	n.a.	106	n.a.	1,634	n.a.	118	n.a.	21	n.a.
1960	28	63	99	193	1,088	3,798	98	155	18	33
1962	24	57	100	188	1,026	3,315	23	49	8	24
1963	16	37	77	158	849	3,123	65	110	12	32
1964	12	29	79	200	917	3,749	91	186	11	30
1965	9	18	58	151	734	3,197	63	105	12	35
1966	12	25	68	135	856	3,597	38	57	11	21
<b>Total Landings</b>										
1938	618	498	2,144	923	15,620	14,634	5,430	1,880	378	150
1948	1,096	2,291	2,137	4,544	17,844	46,414	5,327	5,433	335	565
1951	999	n.a.	1,968	n.a.	16,963	n.a.	3,449	n.a.	350	n.a.
1960	819	2,132	1,509	3,226	14,738	51,982	2,283	2,670	233	311
1962	993	2,229	1,307	2,931	14,562	49,015	1,816	2,826	397	409
1963	914	2,122	1,236	2,846	14,119	51,006	2,160	2,843	862	477
1964	829	1,790	1,341	3,305	14,455	54,818	2,049	2,909	856	524
1965	982	1,786	1,341	3,522	15,179	57,556	2,026	3,035	1,289	748
1966	1,077	2,574	1,222	3,263	14,944	58,016	2,309	2,933	1,681	862

n.a. = not available

\* Includes only landings by foreign fishing vessels direct from fishing grounds



TABLE 3

—concluded

## UNITED KINGDOM

Quantity and Value of Principal Varieties of Fresh and Frozen Fish Landed by British and Foreign Fishing Vessels in 1938, 1948, 1951, 1960 and 1962-66

	Total Pelagic Fish		Total Wet Fish		Total Shellfish		Total All Fish	
	cwt. 000's	£ 000's	cwt. 000's	£ 000's	cwt. 000's	£ 000's	cwt. 000's	£ 000's
<b>England and Wales</b>								
1938	2,888	932	15,533	12,233	532	409	16,065	12,642
1948	2,525	2,604	14,440	33,810	476	988	14,916	34,798
1951	1,711	1,922	14,001	34,476	463	880	14,464	35,356
1960	485	789	10,724	37,064	398	1,080	11,122	38,144
1962	466	880	10,485	34,953	389	1,068	10,874	36,021
1963	683	1,015	10,237	36,232	325	1,029	10,562	37,261
1964	712	1,038	9,955	38,160	312	1,220	10,267	39,380
1965	560	884	10,166	40,329	332	1,202	10,498	41,531
1966	493	727	9,921	39,214	418	1,554	10,339	40,768
<b>Scotland</b>								
1938	2,877	1,084	5,381	3,826	92	80	5,473	3,906
1948	3,050	3,250	6,407	11,608	83	430	6,490	12,038
1951	1,901	2,073	4,884	10,859	88	296	4,972	11,155
1960	1,824	1,954	5,191	13,794	141	951	5,332	14,745
1962	1,681	2,236	5,086	13,767	183	1,319	5,269	15,086
1963	2,213	2,121	5,861	14,704	200	1,364	6,061	16,069
1964	2,028	2,132	6,236	15,963	216	1,589	6,452	17,552
1965	2,587	2,699	7,351	17,507	192	1,657	7,543	19,164
1966	3,424	2,961	8,006	18,767	222	1,928	8,228	20,695
<b>Northern Ireland</b>								
1938	35	12	65	40	7	5	72	45
1948	50	50	192	353	5	13	197	366
1951	48	53	104	158	2	4	106	162
1960	91	50	135	119	13	48	148	167
1962	35	46	147	142	19	74	166	216
1963	49	42	117	125	31	129	148	254
1964	63	47	150	163	31	136	181	299
1965	93	60	168	166	23	98	191	264
1966	24	29	102	155	31	148	133	303
<b>United Kingdom</b>								
1938	5,800	2,028	20,979	16,099	631	494	21,610	16,593
1948	5,625	5,904	21,039	45,771	564	1,431	21,603	47,202
1951	3,660	4,048	18,989	45,493	553	1,180	19,542	46,673
1960	2,400	2,793	16,050	50,977	552	2,079	16,602	53,056
1962	2,182	3,162	15,718	48,862	591	2,461	16,309	51,323
1963	2,945	3,178	16,215	51,061	556	2,522	16,771	53,583
1964	2,803	3,217	16,341	54,286	559	2,945	16,900	57,231
1965	3,240	3,643	17,685	58,002	547	2,957	18,232	60,959
1966	3,941	3,717	18,029	58,136	671	3,630	18,700	61,766
<b>Foreign Landings*</b>								
1938	8	2	449	565	...	...	449	565
1948	37	94	2,467	6,641	...	...	2,467	6,641
1951	139	n.a.	1,773	4,568	...	...	1,773	4,568
1960	116	188	1,204	3,986	1	4	1,205	3,990
1962	31	73	1,057	3,388	1	3	1,058	3,391
1963	77	142	926	3,265	...	1	926	3,266
1964	102	216	1,019	3,965	...	1	1,019	3,966
1965	75	140	809	3,337	...	2	809	3,339
1966	49	78	905	3,675	...	6	905	3,681
<b>Total Landings</b>								
1938	5,808	2,030	21,428	16,664	631	494	22,059	17,158
1948	5,662	5,998	23,506	52,412	564	1,431	24,070	53,843
1951	3,799	n.a.	20,762	50,061	553	1,180	21,315	51,241
1960	2,516	2,981	17,254	54,963	553	2,083	17,807	57,046
1962	2,213	3,235	16,775	52,250	592	2,464	17,367	54,714
1963	3,022	3,320	17,141	54,326	556	2,523	17,697	56,849
1964	2,905	3,433	17,360	58,251	559	2,946	17,919	61,197
1965	3,315	3,783	18,494	61,339	547	2,959	19,041	64,298
1966	3,990	3,795	18,934	61,811	671	3,636	19,605	65,447

n.a. = not available

\* Includes only landings by foreign fishing vessels direct from fishing grounds

TABLE 4

**GREAT BRITAIN**  
**British Landings in 1966 by Species at each Major Demersal Port in England and  
Wales and District in Scotland**

Kind of Fish	NORTH SHIELDS		HARTLEPOOL		WHITBY		SCARBOROUGH	
	cwt.	£	cwt.	£	cwt.	£	cwt.	£
Bream	—	—	—	—	—	—	—	—
Brill	1	4	2	22	1	9	—	—
Catfish	2,448	5,711	27	77	32	75	24	127
Cod	193,513	765,365	22,985	101,554	14,441	60,685	31,913	132,110
Conger Eels	3	6	—	—	—	—	—	—
Dabs, long rough	115	141	5	11	3	4	—	—
Dabs, other	472	1,408	69	167	2	4	49	71
Dogfish	1,483	3,036	402	940	73	126	159	270
Dory	—	—	—	—	—	—	—	—
Flounders or Flukes	20	38	—	—	—	—	—	—
Gurnards	520	664	58	151	—	—	4	5
Haddock	89,081	352,290	3,025	14,546	2,375	14,019	4,113	23,738
Hake	55	688	5	44	—	—	—	—
Halibut	1,259	20,561	15	210	—	—	—	—
Lemon Soles	4,257	50,164	772	9,223	780	7,283	515	4,954
Ling	727	2,012	26	60	1	3	162	409
Megrims	33	102	—	—	—	—	—	—
Monks or Anglers	1,117	3,913	21	171	—	—	1	1
Mullet, grey	—	—	—	—	—	—	—	—
Mullet, red	—	—	—	—	—	—	—	—
Plaice	6,234	49,515	2,433	16,816	1,432	9,109	1,504	9,020
Porbeagles	—	—	—	—	—	—	—	—
Pollock (Lythe)	155	541	1	3	—	—	—	—
Redfish	2,487	4,019	—	—	—	—	—	—
Saithe	17,671	28,398	60	97	16	8	8	25
Skates and Rays	1,656	6,382	341	1,817	234	996	842	4,205
Soles	91	1,945	15	321	29	676	134	2,809
Torsk (Tusk)	140	277	—	—	—	—	—	—
Turbot	73	667	32	295	6	52	32	429
Whiting	17,953	39,549	4,547	9,425	2,133	4,051	4,089	6,489
Witches	178	924	13	50	—	—	15	26
Other Demersal	4,138	30,422	2,654	16,305	504	2,526	6,870	29,936
Fish Livers	17	22	—	—	—	—	—	—
Fish Roes	684	3,487	110	726	—	—	—	—
<b>Total Demersal</b>	<b>346,581</b>	<b>1,372,251</b>	<b>37,618</b>	<b>173,031</b>	<b>22,062</b>	<b>99,626</b>	<b>50,434</b>	<b>214,624</b>
Herring	65,019	103,310	137	326	18,528	25,569	27,461	40,207
Mackerel	602	1,317	3	12	—	—	—	—
Pilchards	—	—	—	—	—	—	—	—
Sprats	2,927	1,286	—	—	—	—	—	—
Whitebait	—	—	—	—	—	—	—	—
Other Pelagic	119	56	—	—	—	—	—	—
<b>Total Pelagic</b>	<b>68,667</b>	<b>105,969</b>	<b>140</b>	<b>338</b>	<b>18,528</b>	<b>25,569</b>	<b>27,461</b>	<b>40,207</b>
<b>Total Wet Fish</b>	<b>415,248</b>	<b>1,478,220</b>	<b>37,758</b>	<b>173,369</b>	<b>40,590</b>	<b>125,195</b>	<b>77,895</b>	<b>254,831</b>
Oysters	—	—	—	—	—	—	—	—
Crabs	487	1,902	96	353	5,553	22,316	3,097	13,319
Crawfish	—	—	13	1,032	—	—	—	—
Lobsters	73	3,778	153	8,840	487	28,934	371	16,630
Cockles	—	—	—	—	—	—	—	—
Escallops & Queens	—	—	—	—	—	—	—	—
Mussels	—	—	—	—	—	—	—	—
Nephrops	9,878	97,634	424	4,056	—	—	—	—
Periwinkles	—	—	—	—	—	—	—	—
Shrimps	2	8	—	—	—	—	—	—
Squids	5	8	—	—	—	—	—	—
Wheiks	4	7	—	—	—	—	—	—
Other Shellfish	—	—	8	103	—	—	—	—
<b>Total Shellfish</b>	<b>10,449</b>	<b>103,337</b>	<b>694</b>	<b>14,384</b>	<b>6,040</b>	<b>51,250</b>	<b>3,468</b>	<b>29,949</b>
<b>Total All Fish</b>	<b>425,697</b>	<b>1,581,557</b>	<b>38,452</b>	<b>187,753</b>	<b>46,630</b>	<b>176,445</b>	<b>81,363</b>	<b>284,780</b>

TABLE 4

—continued

GREAT BRITAIN  
British Landings in 1966 by Species at each Major Demersal Port in England and  
Wales and District in Scotland

Kind of Fish	BRIDLINGTON		HULL		GRIMSBY		LOWESTOFT	
	cwt.	£	cwt.	£	cwt.	£	cwt.	£
Bream . . . . .	—	—	92	558	34	126	—	—
Brill . . . . .	—	—	1	15	1,708	17,761	359	4,115
Catfish . . . . .	—	—	44,058	111,660	40,911	114,894	2,663	8,300
Cod . . . . .	42,215	166,471	2,674,811	10,025,430	1,887,259	7,526,561	134,711	572,391
Conger Eels . . . . .	—	—	—	—	75	223	4	13
Dabs, long rough . . . . .	—	—	500	1,212	42	71	—	—
Dabs, other . . . . .	14	26	2,212	6,656	9,916	32,066	4,977	17,231
Dogfish . . . . .	788	1,851	1,536	2,609	58,938	196,406	2,319	9,825
Dory . . . . .	—	—	—	—	2	5	—	—
Flounders or Flukes . . . . .	—	—	—	—	52	55	527	474
Gurnards . . . . .	—	—	26	43	1,863	2,118	1,020	2,842
Haddock . . . . .	2,202	11,501	423,846	1,742,054	399,651	1,852,658	23,277	89,258
Hake . . . . .	—	—	443	7,662	1,506	23,754	112	818
Halibut . . . . .	—	—	8,516	121,327	11,460	180,455	48	713
Lemon Soles . . . . .	1,649	13,717	2,660	21,328	19,641	205,304	6,803	69,825
Ling . . . . .	—	—	13,452	36,301	15,755	38,528	1,090	2,000
Megrims . . . . .	—	—	38	161	311	1,347	—	—
Monks or Anglers . . . . .	—	—	208	778	5,639	18,165	696	3,237
Mullet, grey . . . . .	—	—	—	—	—	—	—	—
Mullet, red . . . . .	—	—	—	—	—	—	—	—
Plaice . . . . .	2,613	18,903	14,337	92,665	257,163	2,133,348	236,512	1,860,371
Porbeagles . . . . .	—	—	—	—	—	—	—	—
Pollock (Lythe) . . . . .	—	—	102	373	1,381	5,551	92	258
Redfish . . . . .	—	—	157,391	251,767	80,304	127,001	—	—
Saithe . . . . .	—	—	262,742	463,438	213,133	409,154	156	341
Skates and Rays . . . . .	1,892	8,023	3,012	6,316	23,183	101,574	6,669	35,024
Soles . . . . .	204	5,058	—	—	8,680	226,392	4,841	108,376
Torsk (Tusk) . . . . .	—	—	5,028	10,080	3,657	7,937	—	—
Turbot . . . . .	—	—	1	14	9,165	151,761	9,812	157,369
Whiting . . . . .	5,449	7,572	143	389	8,383	18,506	2,914	7,292
Witches . . . . .	—	—	490	1,325	712	3,498	337	2,072
Other Demersal . . . . .	2,673	9,686	47,340	136,845	30,490	78,659	870	3,304
Fish Livers . . . . .	—	—	140,682	106,774	98,910	69,753	—	—
Fish Roes . . . . .	—	—	5,689	19,851	4,089	20,648	307	1,910
<b>Total Demersal . . . . .</b>	<b>59,699</b>	<b>242,808</b>	<b>3,809,356</b>	<b>13,167,631</b>	<b>3,194,013</b>	<b>13,564,279</b>	<b>441,116</b>	<b>2,957,359</b>
Herring . . . . .	2,647	3,407	—	—	7,553	14,392	21,642	63,219
Mackerel . . . . .	—	—	15	24	1,113	1,472	103	376
Pilchards . . . . .	—	—	—	—	—	—	—	—
Sprats . . . . .	—	—	—	—	71,559	38,447	233	511
Whitebait . . . . .	—	—	—	—	—	—	—	—
Other Pelagic . . . . .	1,623	1,029	—	—	27	28	—	—
<b>Total Pelagic . . . . .</b>	<b>4,270</b>	<b>4,436</b>	<b>15</b>	<b>24</b>	<b>80,252</b>	<b>54,339</b>	<b>21,978</b>	<b>64,106</b>
<b>Total Wet Fish . . . . .</b>	<b>63,969</b>	<b>247,244</b>	<b>3,809,371</b>	<b>13,167,655</b>	<b>3,274,265</b>	<b>13,618,618</b>	<b>463,094</b>	<b>3,021,465</b>
Oysters . . . . .	—	—	—	—	—	—	—	—
Crabs . . . . .	4,066	16,504	—	—	2,778	12,228	—	—
Crawfish . . . . .	—	—	—	—	—	—	—	—
Lobsters . . . . .	156	5,978	—	—	37	1,479	—	—
Cockles . . . . .	—	—	—	—	1,370	1,370	—	—
Escallops & Queens . . . . .	—	—	—	—	10	17	—	—
Mussels . . . . .	—	—	—	—	—	—	—	—
Nephrops . . . . .	—	—	—	—	2	14	11	80
Periwinkles . . . . .	—	—	—	—	187	1,444	—	—
Shrimps . . . . .	—	—	—	—	—	—	—	—
Squids . . . . .	—	—	—	—	4	8	—	—
Whelks . . . . .	—	—	—	—	3,385	5,991	—	—
Other Shellfish . . . . .	—	—	—	—	—	—	—	—
<b>Total Shellfish . . . . .</b>	<b>4,222</b>	<b>22,482</b>	<b>—</b>	<b>—</b>	<b>7,773</b>	<b>22,551</b>	<b>11</b>	<b>80</b>
<b>Total All Fish . . . . .</b>	<b>68,191</b>	<b>269,726</b>	<b>3,809,371</b>	<b>13,167,655</b>	<b>3,282,038</b>	<b>13,641,169</b>	<b>463,105</b>	<b>3,021,545</b>

TABLE 4

—continued

GREAT BRITAIN  
British Landings in 1966 by Species at each Major Demersal Port in England and  
Wales and District in Scotland

Kind of Fish	BRIXHAM		NEWLYN		MILFORD HAVEN		FLEETWOOD	
	cwt.	£	cwt.	£	cwt.	£	cwt.	£
Bream . . . . .	2	5	182	1,017	79	465	5,277	22,127
Brill . . . . .	141	1,406	860	9,229	729	7,961	683	7,356
Catfish . . . . .	—	—	—	—	—	—	28,032	58,157
Cod . . . . .	1,162	5,750	2,206	12,588	22,266	99,595	268,850	1,160,262
Conger Eels . . . . .	335	898	2,389	7,757	1,401	3,585	2,491	8,667
Dabs, long rough . . . . .	—	—	—	—	—	—	—	—
Dabs, other . . . . .	463	1,272	216	487	742	1,614	2,336	8,544
Dogfish . . . . .	80	45	1,431	2,163	5,599	12,282	20,654	72,577
Dory . . . . .	2	9	245	1,148	21	90	66	271
Flounders or Flukes . . . . .	388	236	—	—	1	1	676	1,395
Gurnards . . . . .	470	780	3,806	7,869	2,860	3,418	4,254	9,628
Haddock . . . . .	17	104	642	3,957	10,212	33,777	125,734	625,599
Hake . . . . .	12	118	819	9,184	5,500	64,893	42,289	665,753
Halibut . . . . .	—	—	—	—	146	2,695	5,699	101,358
Lemon Soles . . . . .	580	6,329	1,086	8,263	2,090	17,083	8,331	62,378
Ling . . . . .	1	3	1,389	4,134	1,352	4,173	17,846	42,029
Megrims . . . . .	18	80	1,932	12,553	2,321	11,467	1,701	7,704
Monks or Anglers . . . . .	83	217	986	5,815	4,973	18,127	5,952	18,161
Mullet, grey . . . . .	1	20	2	19	—	—	—	—
Mullet, red . . . . .	4	88	9	266	3	88	—	—
Plaice . . . . .	6,979	36,004	1,623	10,101	9,493	52,857	71,922	563,140
Porbeagles . . . . .	—	—	—	—	—	—	—	—
Pollock (Lythe) . . . . .	134	538	463	2,101	2,478	10,996	2,107	9,370
Redfish . . . . .	—	—	—	—	—	—	12,645	15,668
Saithe . . . . .	—	—	7	15	4,934	6,605	208,439	407,851
Skates and Rays . . . . .	1,287	7,010	12,473	72,087	29,793	179,402	25,316	147,427
Soles . . . . .	932	19,605	427	11,783	3,598	87,494	2,236	52,079
Torsk (Tusk) . . . . .	—	—	—	—	43	78	1,971	4,479
Turbot . . . . .	102	1,361	176	2,650	1,164	19,207	1,004	15,011
Whiting . . . . .	10,825	23,341	2,310	6,907	17,910	28,825	6,159	13,096
Witches . . . . .	—	—	1	2	81	510	290	1,210
Other Demersal . . . . .	4,371	24,171	4,064	22,969	177	787	3,059	8,315
Fish Livers . . . . .	—	—	—	—	—	—	20,915	19,588
Fish Roes . . . . .	25	119	31	89	346	1,720	2,556	11,873
<b>Total Demersal . . . . .</b>	<b>28,414</b>	<b>129,509</b>	<b>39,775</b>	<b>215,153</b>	<b>130,312</b>	<b>669,795</b>	<b>899,490</b>	<b>4,141,073</b>
Herring . . . . .	133	547	15	48	4,072	12,078	—	—
Mackerel . . . . .	700	1,967	13,775	40,469	1,646	4,268	140	360
Pilchards . . . . .	—	—	2,872	4,492	—	—	—	—
Sprats . . . . .	12,851	11,842	—	—	—	—	3	1
Whitebait . . . . .	—	—	—	—	—	—	318	1,332
Other Pelagic . . . . .	—	—	321	391	371	356	1,686	2,601
<b>Total Pelagic . . . . .</b>	<b>13,684</b>	<b>14,356</b>	<b>16,983</b>	<b>45,400</b>	<b>6,089</b>	<b>16,702</b>	<b>2,147</b>	<b>4,294</b>
<b>Total Wet Fish . . . . .</b>	<b>42,098</b>	<b>143,865</b>	<b>56,758</b>	<b>260,553</b>	<b>136,401</b>	<b>686,497</b>	<b>901,637</b>	<b>4,145,367</b>
Oysters . . . . .	—	—	—	—	—	—	—	—
Crabs . . . . .	444	2,105	1,325	6,164	4	28	—	—
Crawfish . . . . .	—	—	163	5,815	8	260	—	—
Lobsters . . . . .	7	283	67	2,990	72	3,580	—	—
Cockles . . . . .	—	—	—	—	—	—	—	—
Escallops & Queens . . . . .	417	1,962	—	—	2	3	3	8
Mussels . . . . .	—	—	—	—	—	—	—	—
Nephrops . . . . .	—	—	—	—	834	8,092	2,507	21,296
Periwinkles . . . . .	—	—	—	—	—	—	—	—
Shrimps . . . . .	—	—	—	—	—	—	356	1,665
Squids . . . . .	173	455	766	3,865	491	2,172	71	93
Whelks . . . . .	3	7	23	103	—	—	1	1
Other Shellfish . . . . .	—	—	—	—	—	—	—	—
<b>Total Shellfish . . . . .</b>	<b>1,044</b>	<b>4,812</b>	<b>2,344</b>	<b>18,937</b>	<b>1,411</b>	<b>14,135</b>	<b>2,938</b>	<b>23,063</b>
<b>Total All Fish . . . . .</b>	<b>43,142</b>	<b>148,677</b>	<b>59,102</b>	<b>279,490</b>	<b>137,812</b>	<b>700,632</b>	<b>904,575</b>	<b>4,168,430</b>

TABLE 4

—continued

GREAT BRITAIN  
British Landings in 1966 by Species at each Major Demersal Port In England and  
Wales and District in Scotland

Kind of Fish	WHITEHAVEN		ALL OTHER PORTS		LEITH		ABERDEEN	
	cwt.	£	cwt.	£	cwt.	£	cwt.	£
Bream . . . . .	—	—	136	564	—	—	—	—
Brill . . . . .	195	1,150	1,079	7,784	—	—	11	109
Catfish . . . . .	—	—	3,219	7,116	511	1,406	7,035	17,771
Cod . . . . .	11,381	40,625	176,243	640,839	42,450	184,521	469,014	2,049,770
Conger Eels . . . . .	14	16	1,332	4,294	3	7	228	944
Dabs, long rough . . . . .	—	—	28	97	—	—	—	—
Dabs, other . . . . .	100	95	4,592	18,355	259	779	4,198	18,867
Dogfish . . . . .	19	29	1,306	4,146	6,358	21,646	25,699	56,856
Dory . . . . .	1	2	5	37	—	—	—	—
Flounders or Flukes . . . . .	17	15	2,111	7,114	—	—	—	—
Gurnards . . . . .	63	57	174	246	—	1	806	1,451
Haddock . . . . .	194	881	9,070	36,210	231,321	922,867	951,882	2,842,304
Hake . . . . .	888	7,088	52	356	751	5,877	6,293	71,263
Halibut . . . . .	—	—	3,053	41,353	721	9,813	16,470	288,200
Lemon Soles . . . . .	84	417	2,568	32,177	1,498	13,347	26,200	279,824
Ling . . . . .	—	—	763	2,243	971	2,504	23,099	62,532
Megrims . . . . .	6	7	31	164	337	1,050	3,531	17,935
Monks or Anglers . . . . .	136	190	415	2,019	689	2,056	18,537	77,275
Mullet, grey . . . . .	—	—	396	2,667	—	—	—	—
Mullet, red . . . . .	—	—	68	535	—	—	—	—
Plaice . . . . .	21,335	86,930	35,769	185,919	1,207	8,376	33,169	258,788
Porbeagles . . . . .	—	—	—	—	—	—	47	374
Pollock (Lythe) . . . . .	—	—	526	2,430	1,296	4,451	1,033	3,617
Redfish . . . . .	—	—	1,985	3,878	—	—	5,103	7,730
Saithe . . . . .	123	166	3,507	6,141	12,462	26,056	138,725	200,919
Skates and Rays . . . . .	983	2,817	17,269	106,712	1,745	6,151	41,365	173,497
Soles . . . . .	1,034	16,181	5,521	97,969	—	—	—	—
Torsk (Tusk) . . . . .	—	—	36	80	42	100	14,060	31,823
Turbot . . . . .	108	724	691	9,543	179	1,243	6,096	100,446
Whiting . . . . .	3,139	4,443	48,142	128,106	16,908	44,095	225,279	641,629
Witches . . . . .	3	4	502	1,747	92	519	3,564	19,555
Other Demersal . . . . .	147	377	5,129	20,829	547	1,143	1,305	2,230
Fish Livers . . . . .	—	—	2,876	5,322	—	—	71,859	40,309
Fish Roes . . . . .	42	87	160	1,057	118	513	5,231	26,678
<b>Total Demersal . . . . .</b>	<b>40,012</b>	<b>162,301</b>	<b>328,754</b>	<b>1,378,049</b>	<b>320,465</b>	<b>1,258,521</b>	<b>2,099,839</b>	<b>7,292,696</b>
Herring . . . . .	33,757	56,774	75,261	129,670	847	779	39,787	82,169
Mackerel . . . . .	157	309	20,865	70,763	2,506	4,474	5,688	6,304
Pilchards . . . . .	—	—	23,802	30,927	—	—	—	—
Sprats . . . . .	—	—	78,492	57,238	97,148	32,644	2,215	1,035
Whitebait . . . . .	—	—	830	5,057	—	—	—	—
Other Pelagic . . . . .	—	—	52	110	—	—	—	—
<b>Total Pelagic . . . . .</b>	<b>33,914</b>	<b>57,083</b>	<b>199,302</b>	<b>293,765</b>	<b>100,501</b>	<b>37,897</b>	<b>47,690</b>	<b>89,508</b>
<b>Total Wet Fish . . . . .</b>	<b>73,926</b>	<b>219,384</b>	<b>528,056</b>	<b>1,671,814</b>	<b>420,966</b>	<b>1,296,418</b>	<b>2,147,529</b>	<b>7,382,204</b>
Oysters . . . . .	—	72	4,748	88,104	—	—	—	—
Crabs . . . . .	—	—	38,138	214,033	1,882	5,494	737	2,174
Crawfish . . . . .	—	—	1,478	49,013	—	—	—	—
Lobsters . . . . .	—	—	6,817	306,701	643	30,190	39	2,210
Cockles . . . . .	—	—	184,658	134,958	—	—	—	—
Escallops & Queens . . . . .	—	—	1,195	2,913	—	—	1	1
Mussels . . . . .	—	—	63,238	54,719	1,000	500	—	—
Nephrops . . . . .	1,135	25,388	6,147	75,071	13,155	107,585	37	125
Periwinkles . . . . .	—	—	9,309	17,293	—	—	—	—
Shrimps . . . . .	—	—	26,754	205,169	—	—	—	—
Squids . . . . .	—	—	8	39	3	8	432	666
Whelks . . . . .	—	—	34,183	71,429	—	—	—	—
Other Shellfish . . . . .	—	—	53	3,648	—	—	—	—
<b>Total Shellfish . . . . .</b>	<b>1,135</b>	<b>25,460</b>	<b>376,726</b>	<b>1,223,090</b>	<b>16,683</b>	<b>143,777</b>	<b>1,246</b>	<b>5,176</b>
<b>Total All Fish . . . . .</b>	<b>75,061</b>	<b>244,844</b>	<b>904,782</b>	<b>2,894,904</b>	<b>437,649</b>	<b>1,440,195</b>	<b>2,148,775</b>	<b>7,387,380</b>

TABLE 4

—concluded

**GREAT BRITAIN**  
British Landings in 1966 by Species at each Major Demersal Port in England and  
Wales and District in Scotland

Kind of Fish	FRASERBURGH		BUCKIE		ULLAPOOL		ALL OTHER DISTRICTS	
	cwt.	£	cwt.	£	cwt.	£	cwt.	£
Bream	—	—	—	—	—	—	—	—
Brill	—	—	6	53	4	40	170	1,650
Catfish	306	634	42	98	—	—	652	1,528
Cod	42,892	172,319	43,434	172,920	43,324	181,039	272,066	987,624
Conger Eels	57	205	12	15	161	396	1,599	4,456
Dabs, long rough	—	—	—	—	—	—	—	—
Dabs, other	362	1,726	1,006	3,051	334	883	6,302	20,278
Dogfish	5,652	12,193	2,850	4,563	41,556	69,241	16,450	28,627
Dory	—	—	—	—	—	—	—	—
Flounders or Flukes	—	—	—	—	47	149	899	575
Gurnards	62	29	21	32	2	2	1,292	456
Haddock	120,987	354,935	58,741	186,040	145,685	502,697	392,689	1,219,963
Hake	1,366	13,393	2,114	25,707	5,875	45,236	29,927	244,660
Halibut	440	9,918	497	7,702	579	9,951	848	15,008
Lemon Soles	5,479	65,100	3,696	35,307	3,743	33,396	17,522	194,216
Ling	585	1,617	564	1,398	1,145	2,902	1,631	6,605
Mégrims	1,215	5,630	2,339	8,494	6,456	27,594	3,516	13,354
Monks or Anglers	6,309	26,517	4,792	18,878	5,848	24,916	10,631	32,094
Mullet, grey	—	—	—	—	—	—	—	—
Mullet, red	—	—	—	—	—	—	—	—
Plaice	2,515	22,451	12,178	90,988	6,069	42,202	67,474	412,149
Porbeagles	9	25	6	31	—	—	57	296
Pollock (Lythe)	23	63	17	40	2,068	6,935	1,815	4,559
Redfish	8	30	—	—	2	4	—	—
Saithe	1,238	1,476	857	1,197	5,165	7,560	18,035	16,872
Skates and Rays	8,156	46,570	6,930	22,651	10,552	35,599	29,515	108,882
Soles	—	—	—	—	—	—	—	—
Torsk (Tusk)	9	32	—	—	26	59	24	48
Turbot	172	2,800	141	1,628	50	447	808	9,538
Whiting	132,022	277,708	54,148	130,181	101,804	256,487	361,316	858,764
Witches	6,611	28,850	1,342	4,511	1,697	6,322	4,689	18,345
Other Demersal	123	56	6	28	2	4	896	7,514
Fish Livers	—	—	3	4	—	—	44	24
Fish Roes	1,119	6,768	1,066	4,597	687	4,410	3,847	17,389
<b>Total Demersal</b>	<b>337,717</b>	<b>1,051,045</b>	<b>196,808</b>	<b>720,114</b>	<b>382,881</b>	<b>1,258,471</b>	<b>1,244,714</b>	<b>4,225,474</b>
Herring	167,846	319,519	7,168	7,662	480,288	527,954	1,301,549	1,462,601
Mackerel	2,735	6,853	233	349	2,337	931	12,045	17,175
Pilchards	—	—	—	—	—	—	—	—
Sprats	76,024	38,170	124,350	56,071	98	54	1,100,750	396,135
Whitebait	—	—	—	—	—	—	—	—
Other Pelagic	—	—	—	—	—	—	53	291
<b>Total Pelagic</b>	<b>246,605</b>	<b>364,542</b>	<b>131,751</b>	<b>64,082</b>	<b>482,723</b>	<b>528,939</b>	<b>2,414,397</b>	<b>1,876,202</b>
<b>Total Wet Fish</b>	<b>584,322</b>	<b>1,415,587</b>	<b>328,559</b>	<b>784,196</b>	<b>865,604</b>	<b>1,787,410</b>	<b>3,659,111</b>	<b>6,101,676</b>
Oysters	—	—	—	—	—	—	—	—
Crabs	6,704	25,025	15	47	2,227	5,549	25,900	67,935
Crawfish	—	—	—	—	—	—	—	—
Lobsters	82	3,555	52	2,192	301	15,261	10,420	506,517
Cockles	—	—	—	—	—	—	—	—
Escallops & Queens	—	—	—	—	—	—	12,091	78,610
Mussels	—	—	—	—	—	—	8,258	7,018
Nephrops	7,453	56,362	13,366	97,145	8,455	86,430	82,387	767,897
Periwinkles	1,498	2,555	50	75	—	—	21,247	42,619
Shrimps	—	—	—	—	—	—	2,282	11,621
Squids	8	29	23	46	51	94	222	664
Whelks	—	—	—	—	—	—	—	—
Other Shellfish	—	—	1	1	1	2	753	1,538
<b>Total Shellfish</b>	<b>15,745</b>	<b>87,526</b>	<b>13,507</b>	<b>99,506</b>	<b>11,035</b>	<b>107,336</b>	<b>163,560</b>	<b>1,484,419</b>
<b>Total All Fish</b>	<b>600,067</b>	<b>1,503,113</b>	<b>342,066</b>	<b>883,702</b>	<b>876,639</b>	<b>1,894,746</b>	<b>3,822,671</b>	<b>7,586,095</b>

TABLE 5

## UNITED KINGDOM

## British Landings of Wet Fish (Excl. Livers) in 1966 by Region of Capture

## (A) Landings in England and Wales; Scotland and Northern Ireland

Region and Kind of Fish	ENGLAND AND WALES		SCOTLAND		NORTHERN IRELAND		UNITED KINGDOM	
	'000 cwt.	£'000	'000 cwt.	£'000	'000 cwt.	£'000	'000 cwt.	£'000
<b>WEST OF SCOTLAND</b>								
Cod	84	405	166	680	...	1	250	1,086
Haddock	44	160	428	1,479	—	—	472	1,639
Plaice	4	31	21	152	1	5	26	189
Redfish	...	...	...	...	—	—	...	...
Saithe	134	265	49	58	1	2	184	325
Skates & Rays	14	90	34	132	—	—	48	222
Soles	...	...	—	—	—	—	...	...
Whiting	9	17	208	556	—	—	217	573
Other Demersal	100	713	153	664	—	—	253	1,377
<b>Total Demersal</b>	<b>389</b>	<b>1,681</b>	<b>1,059</b>	<b>3,721</b>	<b>2</b>	<b>8</b>	<b>1,450</b>	<b>5,410</b>
Herring	...	...	1,365	1,645	—	—	1,365	1,645
Mackerel	1	2	13	15	—	—	14	17
Other Pelagic	1	2	1	1	—	—	2	3
<b>Total Pelagic</b>	<b>2</b>	<b>4</b>	<b>1,379</b>	<b>1,661</b>	<b>—</b>	<b>—</b>	<b>1,381</b>	<b>1,665</b>
<b>Total Wet Fish</b>	<b>391</b>	<b>1,685</b>	<b>2,438</b>	<b>5,382</b>	<b>2</b>	<b>8</b>	<b>2,831</b>	<b>7,075</b>
<b>IRISH SEA</b>								
Cod	44	189	1	3	16	44	61	236
Haddock	2	7	...	1	1	2	3	10
Plaice	44	197	3	18	3	10	50	225
Redfish	—	—	—	—	—	—	—	—
Saithe	2	4	...	...	2	4	4	8
Skates & Rays	34	202	2	6	1	2	37	210
Soles	5	111	—	—	...	...	5	111
Whiting	17	34	...	1	40	42	57	77
Other Demersal	22	142	1	9	13	13	36	164
<b>Total Demersal</b>	<b>170</b>	<b>886</b>	<b>7</b>	<b>38</b>	<b>76</b>	<b>117</b>	<b>253</b>	<b>1,041</b>
Herring	42	69	6	8	17	25	65	102
Mackerel	2	14	1	1	2	2	5	17
Other Pelagic	1	5	—	—	5	2	6	7
<b>Total Pelagic</b>	<b>45</b>	<b>88</b>	<b>7</b>	<b>9</b>	<b>24</b>	<b>29</b>	<b>76</b>	<b>126</b>
<b>Total Wet Fish</b>	<b>215</b>	<b>974</b>	<b>14</b>	<b>47</b>	<b>100</b>	<b>146</b>	<b>329</b>	<b>1,167</b>

TABLE 5

—continued

UNITED KINGDOM  
British Landings of Wet Fish (Excl. Livers) in 1966 by Region of Capture  
(B) Landings in England and Wales and Scotland  
(There were no landings in Northern Ireland from these Regions)

Region and Kind of Fish	ENGLAND AND WALES		SCOTLAND		UNITED KINGDOM	
	'000 cwt.	£'000	'000 cwt.	£'000	'000 cwt.	£'000
<b>ICELAND</b>						
Cod . . . . .	1,788	7,136	80	315	1,868	7,451
Haddock . . . . .	323	1,790	26	129	349	1,919
Plaice . . . . .	77	709	2	11	79	720
Redfish . . . . .	116	158	4	7	120	165
Saithe . . . . .	172	335	15	28	187	363
Skates & Rays . . . . .	5	12	2	8	7	20
Soles . . . . .	—	—	—	—	—	—
Whiting . . . . .	...	2	...	1	...	3
Other Demersal . . . . .	204	768	18	90	222	858
<b>Total Demersal</b> . . . . .	<b>2,685</b>	<b>10,910</b>	<b>147</b>	<b>589</b>	<b>2,832</b>	<b>11,499</b>
<b>Total Wet Fish</b> . . . . .	<b>2,685</b>	<b>10,910</b>	<b>147</b>	<b>589</b>	<b>2,832</b>	<b>11,499</b>
<b>FAROE ISLANDS</b>						
Cod . . . . .	80	387	129	592	209	979
Haddock . . . . .	47	213	109	427	156	640
Plaice . . . . .	2	23	3	29	5	52
Redfish . . . . .	...	...	1	1	1	1
Saithe . . . . .	58	109	59	86	117	195
Skates & Rays . . . . .	1	5	4	18	5	23
Soles . . . . .	—	—	—	—	—	—
Whiting . . . . .	...	1	2	8	2	9
Other Demersal . . . . .	22	137	42	315	64	452
<b>Total Demersal</b> . . . . .	<b>210</b>	<b>875</b>	<b>349</b>	<b>1,476</b>	<b>559</b>	<b>2,351</b>
<b>Total Wet Fish</b> . . . . .	<b>210</b>	<b>875</b>	<b>349</b>	<b>1,476</b>	<b>559</b>	<b>2,351</b>
<b>NORTH SEA</b>						
Cod . . . . .	809	3,449	538	2,158	1,347	5,607
Haddock . . . . .	208	842	1,338	3,993	1,546	4,835
Plaice . . . . .	472	3,769	94	626	566	4,395
Redfish . . . . .	...	...	...	...	...	...
Saithe . . . . .	108	211	53	82	161	293
Skates & Rays . . . . .	35	178	52	208	87	386
Soles . . . . .	16	388	—	—	16	388
Whiting . . . . .	77	168	680	1,644	757	1,812
Other Demersal . . . . .	180	1,315	178	1,165	358	2,480
<b>Total Demersal</b> . . . . .	<b>1,905</b>	<b>10,320</b>	<b>2,933</b>	<b>9,876</b>	<b>4,838</b>	<b>20,196</b>
Herring . . . . .	208	362	626	747	834	1,109
Mackerel . . . . .	2	4	12	20	14	24
Other Pelagic . . . . .	133	79	1,399	524	1,532	603
<b>Total Pelagic</b> . . . . .	<b>343</b>	<b>445</b>	<b>2,037</b>	<b>1,291</b>	<b>2,380</b>	<b>1,736</b>
<b>Total Wet Fish</b> . . . . .	<b>2,248</b>	<b>10,765</b>	<b>4,970</b>	<b>11,167</b>	<b>7,218</b>	<b>21,932</b>



TABLE 5

—continued

UNITED KINGDOM  
British Landings of Wet Fish (Excl. Livers) in 1966 by Region of Capture  
(C) Landings in England and Wales only  
(There were no landings in Scotland or Northern Ireland from these Regions)

Region and Kind of Fish	ENGLAND AND WALES		Region and Kind of Fish	ENGLAND AND WALES	
	'000 cwt.	£'000		'000 cwt.	£'000
<b>BARENTS SEA</b>			<b>BEAR ISLAND and SPITZBERGEN</b>		
Cod . . . . .	833	3,155	Cod . . . . .	313	1,135
Haddock . . . . .	184	667	Haddock . . . . .	11	46
Plaice . . . . .	30	180	Plaice . . . . .	...	...
Redfish . . . . .	34	60	Redfish . . . . .	9	16
Saithe . . . . .	53	97	Saithe . . . . .	11	21
Skates & Rays . . . . .	2	2	Skates & Rays . . . . .	1	1
Soles . . . . .	—	—	Soles . . . . .	—	—
Whiting . . . . .	—	—	Whiting . . . . .	—	—
Other Demersal . . . . .	16	92	Other Demersal . . . . .	9	28
<b>Total Demersal . . . . .</b>	<b>1,152</b>	<b>4,253</b>	<b>Total Demersal . . . . .</b>	<b>354</b>	<b>1,247</b>
<b>Total Wet Fish . . . . .</b>	<b>1,152</b>	<b>4,253</b>	<b>Total Wet Fish . . . . .</b>	<b>354</b>	<b>1,247</b>
<b>NORWEGIAN COAST</b>			<b>EAST COAST OF GREENLAND</b>		
Cod . . . . .	544	2,223	Cod . . . . .	4	15
Haddock . . . . .	260	1,016	Haddock . . . . .	...	3
Plaice . . . . .	1	2	Plaice . . . . .	...	3
Redfish . . . . .	86	149	Redfish . . . . .	...	...
Saithe . . . . .	165	265	Saithe . . . . .	...	...
Skates & Rays . . . . .	1	1	Skates & Rays . . . . .	...	...
Soles . . . . .	—	—	Soles . . . . .	—	—
Whiting . . . . .	—	—	Whiting . . . . .	—	—
Other Demersal . . . . .	18	103	Other Demersal . . . . .	1	1
<b>Total Demersal . . . . .</b>	<b>1,075</b>	<b>3,759</b>	<b>Total Demersal . . . . .</b>	<b>5</b>	<b>22</b>
<b>Total Wet Fish . . . . .</b>	<b>1,075</b>	<b>3,759</b>	<b>Total Wet Fish . . . . .</b>	<b>5</b>	<b>22</b>
<b>WEST OF IRELAND AND PORCUPINE BANK</b>			<b>ENGLISH CHANNEL</b>		
Cod . . . . .	1	3	Cod . . . . .	6	32
Haddock . . . . .	1	2	Haddock . . . . .	1	3
Plaice . . . . .	...	...	Plaice . . . . .	31	159
Redfish . . . . .	...	...	Redfish . . . . .	—	—
Saithe . . . . .	2	5	Saithe . . . . .	...	...
Skates & Rays . . . . .	...	1	Skates & Rays . . . . .	10	56
Soles . . . . .	...	...	Soles . . . . .	4	72
Whiting . . . . .	...	...	Whiting . . . . .	22	62
Other Demersal . . . . .	1	15	Other Demersal . . . . .	27	160
<b>Total Demersal . . . . .</b>	<b>5</b>	<b>26</b>	<b>Total Demersal . . . . .</b>	<b>101</b>	<b>544</b>
Herring . . . . .	—	—	Herring . . . . .	2	7
Mackerel . . . . .	...	...	Mackerel . . . . .	11	38
Other Pelagic . . . . .	...	...	Other Pelagic . . . . .	60	64
<b>Total Pelagic . . . . .</b>	<b>...</b>	<b>...</b>	<b>Total Pelagic . . . . .</b>	<b>73</b>	<b>109</b>
<b>Total Wet Fish . . . . .</b>	<b>6</b>	<b>26</b>	<b>Total Wet Fish . . . . .</b>	<b>174</b>	<b>653</b>
<b>SOUTH OF IRELAND AND SOLE BANKS</b>			<b>BRISTOL CHANNEL</b>		
Cod . . . . .	5	21	Cod . . . . .	3	14
Haddock . . . . .	3	14	Haddock . . . . .	...	2
Plaice . . . . .	1	8	Plaice . . . . .	8	44
Redfish . . . . .	—	—	Redfish . . . . .	—	—
Saithe . . . . .	1	1	Saithe . . . . .	...	...
Skates & Rays . . . . .	5	32	Skates & Rays . . . . .	14	84
Soles . . . . .	1	17	Soles . . . . .	2	38
Whiting . . . . .	3	6	Whiting . . . . .	4	6
Other Demersal . . . . .	7	36	Other Demersal . . . . .	14	58
<b>Total Demersal . . . . .</b>	<b>26</b>	<b>135</b>	<b>Total Demersal . . . . .</b>	<b>45</b>	<b>246</b>
Herring . . . . .	4	11	Herring . . . . .	...	...
Mackerel . . . . .	1	3	Mackerel . . . . .	22	60
Other Pelagic . . . . .	...	...	Other Pelagic . . . . .	3	5
<b>Total Pelagic . . . . .</b>	<b>5</b>	<b>14</b>	<b>Total Pelagic . . . . .</b>	<b>25</b>	<b>65</b>
<b>Total Wet Fish . . . . .</b>	<b>31</b>	<b>149</b>	<b>Total Wet Fish . . . . .</b>	<b>70</b>	<b>311</b>

**TABLE 5**

—concluded

**UNITED KINGDOM**

British Landings of Wet Fish (excl. Livers) in 1966 by Region of Capture

(C) Landings in England and Wales only (Cont.)

(There were no landings in Scotland or Northern Ireland from these Regions)

Region and Kind of Fish	ENGLAND AND WALES		Region and Kind of Fish	ENGLAND AND WALES	
	'000 cwt.	£'000		'000 cwt.	£'000
<b>WEST COAST OF GREENLAND</b>			<b>GRAND BANKS OF NEWFOUNDLAND</b>		
Cod . . . . .	346	1,042	Cod . . . . .	438	1,424
Haddock . . . . .	1	3	Haddock . . . . .	8	27
Plaice . . . . .	—	—	Plaice . . . . .	—	—
Redfish . . . . .	4	6	Redfish . . . . .	5	11
Saithe . . . . .	1	1	Saithe . . . . .	3	6
Skates & Rays . . . . .	—	—	Skates & Rays . . . . .	3	15
Soles . . . . .	—	—	Soles . . . . .	—	—
Whiting . . . . .	—	—	Whiting . . . . .	—	—
Other Demersal . . . . .	18	46	Other Demersal . . . . .	21	96
<b>Total Demersal . . . . .</b>	<b>370</b>	<b>1,098</b>	<b>Total Demersal . . . . .</b>	<b>478</b>	<b>1,579</b>
<b>Total Wet Fish . . . . .</b>	<b>370</b>	<b>1,098</b>	<b>Total Wet Fish . . . . .</b>	<b>478</b>	<b>1,579</b>
<b>LABRADOR</b>			<b>GULF OF ST. LAWRENCE</b>		
Cod . . . . .	183	667	Cod . . . . .	3	10
Haddock . . . . .	1	2	Haddock . . . . .	1	3
Plaice . . . . .	—	—	Plaice . . . . .	—	—
Redfish . . . . .	1	1	Redfish . . . . .	—	—
Saithe . . . . .	—	—	Saithe . . . . .	—	—
Skates & Rays . . . . .	—	—	Skates & Rays . . . . .	—	—
Soles . . . . .	—	—	Soles . . . . .	—	—
Whiting . . . . .	—	—	Whiting . . . . .	—	—
Other Demersal . . . . .	3	15	Other Demersal . . . . .	1	2
<b>Total Demersal . . . . .</b>	<b>188</b>	<b>685</b>	<b>Total Demersal . . . . .</b>	<b>5</b>	<b>15</b>
<b>Total Wet Fish . . . . .</b>	<b>188</b>	<b>685</b>	<b>Total Wet Fish . . . . .</b>	<b>5</b>	<b>15</b>
<b>GULF OF MAIN AND GEORGES BANK</b>					
Cod . . . . .	1	4			
Haddock . . . . .	—	1			
Plaice . . . . .	—	—			
Redfish . . . . .	—	—			
Saithe . . . . .	—	—			
Skates & Rays . . . . .	—	—			
Soles . . . . .	—	—			
Whiting . . . . .	—	—			
Other Demersal . . . . .	1	1			
<b>Total Demersal . . . . .</b>	<b>2</b>	<b>6</b>			
<b>Total Wet Fish . . . . .</b>	<b>2</b>	<b>6</b>			

(D) Landings in Scotland only

(There were no landings in England and Wales or Northern Ireland from this Region)

Region and Kind of Fish	SCOTLAND	
	'000 cwt.	£'000
<b>ROCKALL</b>		
Cod . . . . .	—	—
Haddock . . . . .	—	—
Plaice . . . . .	—	—
Redfish . . . . .	—	—
Saithe . . . . .	—	—
Skates & Rays . . . . .	5	22
Soles . . . . .	—	—
Whiting . . . . .	—	—
Other Demersal . . . . .	12	44
<b>Total Demersal . . . . .</b>	<b>17</b>	<b>66</b>
<b>Total Wet Fish . . . . .</b>	<b>17</b>	<b>66</b>

TABLE 6

## Fishing Effort of British Vessels by Region of Capture in 1966

LANDINGS IN ENGLAND AND WALES  Region of Capture and Method of Fishing	Catch of Demersal fish only (excl. livers) by vessels of 40 ft. and over					
	Number of:			Average tonnage per voyage	Fish landed	
	Arrivals	Hours fishing	Days absent		Quantity	Value
				'000 cwt.	£'000	
<b>BARENTS SEA</b>						
Trawl, Steam . . . . .	317	56,872	6,699	713	668	2,440
Trawl, Motor . . . . .	205	40,932	4,515	688	484	1,813
Total . . . . .	522	97,804	11,214	703	1,152	4,253
<b>NORWEGIAN COAST</b>						
Trawl, Steam . . . . .	250	40,773	4,969	715	633	2,191
Trawl, Motor . . . . .	153	27,475	3,022	748	442	1,568
Total . . . . .	403	68,248	7,991	728	1,075	3,759
<b>BEAR ISLAND and SPITZBERGEN</b>						
Trawl, Steam . . . . .	100	18,053	2,077	730	177	616
Trawl, Motor . . . . .	80	15,543	1,643	748	177	631
Total . . . . .	180	33,596	3,720	738	354	1,247
<b>NORTH SEA</b>						
Trawl, Steam . . . . .	5	692	64	624	5	23
Trawl, Motor . . . . .	14,988	683,219	50,614	81	1,308	7,576
Danish Seine, Motor . . . . .	6,235	240,303	24,934	31	511	2,315
Small & Hand Lines, Motor . . . . .	1,637	n.a.	1,716	23	26	121
Paregs, Motor . . . . .	46	552	46	14	...	1
Other Methods . . . . .	1	10	1	24	...	...
Total . . . . .	22,912	—	77,375	63	1,851	10,036
<b>ICELAND</b>						
Trawl, Steam . . . . .	1,013	171,033	19,226	668	1,588	6,219
Trawl, Motor . . . . .	881	143,690	15,798	470	1,097	4,691
Total . . . . .	1,894	314,723	35,024	576	2,685	10,910
<b>FAROES</b>						
Trawl, Steam . . . . .	15	2,076	200	418	11	46
Trawl, Motor . . . . .	251	33,611	3,242	328	199	829
Total . . . . .	266	35,687	3,442	334	210	875
<b>WEST OF SCOTLAND</b>						
Trawl, steam . . . . .	5	548	70	459	4	15
Trawl, Motor . . . . .	722	89,090	8,520	279	384	1,664
Danish Seine, Motor . . . . .	2	144	33	36	...	2
Total . . . . .	729	89,782	8,623	279	389	1,681
<b>IRISH SEA</b>						
Trawl, Motor . . . . .	2,517	104,355	9,595	48	127	702
Danish Seine, Motor . . . . .	460	17,592	1,746	32	31	129
Small & Hand Lines, Motor . . . . .	1	n.a.	10	32	...	1
Total . . . . .	2,978	—	11,351	46	158	832

TABLE 6

—continued

## Fishing Effort of British Vessels by Region of Capture in 1966

LANDINGS IN ENGLAND AND WALES Region of Capture and Method of Fishing	Catch of Demersal fish only (excl. livers) by vessels of 40 ft. and over					
	Number of:			Average tonnage per voyage	Fish landed	
	Arrivals	Hours fishing	Days absent		Quantity	Value
				'000 cwt.	£'000	
<b>WEST OF IRELAND and PORCUPINE BANK</b>						
Trawl, Motor . . . . .	10	1,297	115	322	5	26
Total . . . . .	10	1,297	115	322	5	26
<b>ENGLISH CHANNEL</b>						
Trawl, Motor . . . . .	6,021	101,812	8,217	32	66	353
Small & Hand Lines, Motor . . . . .	111	n.a.	138	18	2	8
Parega, Motor . . . . .	20	69	20	18	...	...
Total . . . . .	6,152	—	8,375	32	68	361
<b>BRISTOL CHANNEL</b>						
Trawl, Motor . . . . .	592	31,933	2,252	63	35	199
Small & Hand Lines, Motor . . . . .	202	n.a.	304	25	7	30
Total . . . . .	794	—	2,556	53	42	229
<b>SOUTH OF IRELAND and SOLE BANKS</b>						
Trawl, Motor . . . . .	119	14,704	1,045	153	23	123
Small & Hand Lines, Motor . . . . .	55	n.a.	123	22	3	12
Total . . . . .	174	—	1,168	111	26	135
<b>EAST COAST OF GREENLAND</b>						
Trawl, Steam . . . . .	1	210	32	636	3	14
Trawl, Motor . . . . .	1	110	18	779	2	8
Total . . . . .	2	320	50	708	5	22
<b>WEST COAST OF GREENLAND</b>						
Trawl, Steam . . . . .	24	2,556	559	764	65	163
Trawl, Motor . . . . .	81	14,621	2,038	1,005	305	935
Total . . . . .	105	17,177	2,597	950	370	1,098
<b>LABRADOR</b>						
Trawl, Steam . . . . .	1	105	26	787	3	8
Trawl, Motor . . . . .	37	7,546	951	1,580	185	677
Total . . . . .	38	7,651	977	1,559	188	685
<b>GRAND BANKS OF NEWFOUNDLAND</b>						
Trawl, Motor . . . . .	79	27,562	2,956	1,409	478	1,579
Total . . . . .	79	27,562	2,956	1,409	478	1,579
<b>GULF OF ST. LAWRENCE</b>						
Trawl, Motor . . . . .	4	471	60	1,841	5	15
Total . . . . .	4	471	60	1,841	5	15
<b>GULF OF MAIN and GEORGES BANK</b>						
Trawl, Motor . . . . .	2	201	22	2,605	2	6
Total . . . . .	2	201	22	2,605	2	6

**TABLE 6**  
—concluded

Fishing Effort of British Vessels by Region of Capture in 1966

LANDINGS IN SCOTLAND Region of Capture and Method of Fishing	Catch of Wet and Shell fish* by all vessels				
	Number of			Fish landed	
	Arrivals	Hours fishing	Days absent	Quantity	Value
				'000 cwt.	£'000
<b>NORTH SEA</b>					
Trawl, Steam . . . . .	30	2,866	265	15	46
Trawl, Motor . . . . .	15,640	261,301	30,500	2,532	4,329
Danish Seine, Motor . . . . .	55,522	501,689	72,002	1,843	5,841
Great Lines, Motor . . . . .	279	3,643	481	8	40
Small & Hand Lines, Motor . . . . .	11,317	n.a.	11,304	54	180
Other Methods, Motor . . . . .	17,379	n.a.	19,682	625	1,294
<b>Total . . . . .</b>	<b>100,167</b>	<b>—</b>	<b>134,234</b>	<b>5,077</b>	<b>11,730</b>
<b>ICELAND</b>					
Trawl, Steam . . . . .	8	1,191	116	6	21
Trawl, Motor . . . . .	174	25,747	2,539	138	521
Great Lines, Motor . . . . .	22	4,020	478	11	54
<b>Total . . . . .</b>	<b>204</b>	<b>30,958</b>	<b>3,133</b>	<b>155</b>	<b>596</b>
<b>FAROES</b>					
Trawl, Steam . . . . .	36	4,911	473	23	81
Trawl, Motor . . . . .	455	59,498	5,690	309...	1,209
Great Lines, Motor . . . . .	99	16,720	1,791	29	196
<b>Total . . . . .</b>	<b>590</b>	<b>81,129</b>	<b>7,954</b>	<b>361</b>	<b>1,486</b>
<b>WEST OF SCOTLAND</b>					
Trawl, Steam . . . . .	4	351	32	2	7
Trawl, Motor . . . . .	5,631	114,202	12,185	709	1,969
Danish Seine, Motor . . . . .	15,267	156,511	18,485	522	1,889
Great Lines, Motor . . . . .	93	1,602	209	2	10
Small & Hand Lines, Motor . . . . .	1,713	n.a.	1,713	7	15
Other Methods, Motor . . . . .	22,928	n.a.	25,158	1,266	2,068
<b>Total . . . . .</b>	<b>45,636</b>	<b>—</b>	<b>57,782</b>	<b>2,508</b>	<b>5,958</b>
<b>IRISH SEA</b>					
Trawl, Steam . . . . .	—	—	—	—	—
Trawl, Motor . . . . .	233	1,539	329	3	16
Danish Seine, Motor . . . . .	167	2,151	231	3	18
Great Lines, Motor . . . . .	26	446	44	1	3
Small & Hand Lines, Motor . . . . .	10	n.a.	10	...	...
Other Methods, Motor . . . . .	141	n.a.	142	7	10
<b>Total . . . . .</b>	<b>577</b>	<b>—</b>	<b>756</b>	<b>14</b>	<b>47</b>
<b>ROCKALL</b>					
Trawl, Motor . . . . .	—	—	—	—	—
Great Lines, Motor . . . . .	33	6,391	536	17	67
<b>Total . . . . .</b>	<b>33</b>	<b>6,391</b>	<b>536</b>	<b>17</b>	<b>67</b>
<b>LANDINGS IN NORTHERN IRELAND</b>					
<b>WEST OF SCOTLAND</b>					
Trawl, Motor . . . . .	—	—	—	—	—
Danish Seine, Motor . . . . .	327	1,962	327	1	6
Small & Hand lines, Motor . . . . .	230	1,380	230	1	2
Other Methods, Motor . . . . .	—	—	—	—	—
<b>Total . . . . .</b>	<b>557</b>	<b>3,342</b>	<b>557</b>	<b>2</b>	<b>8</b>
<b>IRISH SEA</b>					
Trawl, Motor . . . . .	4,637	50,487	4,637	68	98
Danish Seine, Motor . . . . .	793	4,485	793	20	25
Small & Hand Lines, Motor . . . . .	548	3,288	548	2	2
Other Methods, Motor . . . . .	695	4,166	690	10	21
<b>Total . . . . .</b>	<b>6,673</b>	<b>62,426</b>	<b>6,668</b>	<b>100</b>	<b>146</b>

\* Shellfish includes nephrops and squids only.

**TABLE 7****UNITED KINGDOM****Landings by Distant Water Vessels (140 ft. and over registered length) 1962-66**

PORTS		1962	1963	1964	1965	1966
Hull	'000 cwt.	4,449	3,800	3,518	3,617	3,599
	£'000	12,812	12,362	12,683	13,217	12,771
Grimsby	'000 cwt.	1,955	1,687	1,575	1,656	1,628
	£'000	6,227	5,870	6,068	6,680	6,181
Fleetwood	'000 cwt.	227	200	176	166	172
	£'000	876	820	827	800	858
Other Ports	'000 cwt.	265	274	212	276	300
	£'000	766	799	676	1,009	1,083
<b>TOTAL: United Kingdom</b>		<b>6,896</b>	<b>5,961</b>	<b>5,481</b>	<b>5,715</b>	<b>5,699</b>
		<b>20,681</b>	<b>19,851</b>	<b>20,254</b>	<b>21,706</b>	<b>20,893</b>

**TABLE 8****UNITED KINGDOM (a)****Landings of Fish Frozen at sea by British Vessels in 1965 and 1966**

Kind of Fish	Quantity (b) '000 cwt.	
	1965	1966
Catfish . . . . .	5	8
Cod . . . . .	547	810
Dabs . . . . .	8	7
Haddock . . . . .	21	30
Halibut . . . . .	10	5
Redfish . . . . .	6	6
Saiche (Coalfish) . . . . .	10	13
Skates and Rays . . . . .	4	3
Others . . . . .	10	12
<b>Total . . . . .</b>	<b>621</b>	<b>894</b>

(a) In practice, frozen fish was landed only at English and Welsh ports.

(b) Filleted fish is converted to landed weight equivalent (i.e. head on, gutted).

TABLE 9

## Average Annual Values of Fish Landed by British Vessels Selected Years 1938-1966

s. d. per cwt.

Kinds of Fish	ENGLAND AND WALES								
	1938	1948	1951	1960	1962	1963	1964	1965	1966
	s. d.	s. d.	s. d.	s. d.	s. d.	s. d.	s. d.	s. d.	s. d.
Bream	10 1	19 9	14 5	50. 1	67 1	101. 3	100 10	88 7	85 8
Brill	77 0	182 0	161 2	185 2	184 2	157 6	185 1	243 1	197 4
Catfish	14 0	30 2	32 4	44 9	36 0	39 2	47 6	46 8	50 5
Cod	13 2	45 9	44 3	66 1	59 10	67 7	77 3	79 9	77 9
Conger Eels	12 4	32 5	31 3	41 10	46 2	52 4	56 7	61 0	63 4
Dabs, long rough	—	—	15 0	33 1	34 0	41 3	38 11	44 2	44 4
Dabs, other	26 9	56 7	57 4	60 4	55 1	53 3	56 6	64 4	67 3
Dogfish	12 5	27 1	35 8	41 4	49 0	48 9	53 4	54 0	64 8
Dory	18 10	37 9	64 4	69 0	75 1	80 3	80 2	89 0	91 4
Flounders or Flukes	18 3	51 2	38 8	56 0	47 4	48 10	57 2	49 4	49 2
Gurnards	8 1	19 0	23 2	27 4	28 5	30 1	33 10	36 3	36 10
Haddock	18 6	54 8	60 6	75 1	73 7	87 3	88 9	88 5	87 10
Hake	37 1	93 7	141 6	211 5	195 7	217 7	252 6	263 3	302 0
Halibut	79 3	163 9	193 4	236 0	268 1	269 5	269 8	264 7	310 5
Lemon Soles	62 2	110 3	132 7	156 0	166 5	160 2	181 3	194 5	196 3
Ling	9 11	33 5	30 2	46 0	41 3	48 1	51 11	50 1	50 2
Megrims	21 6	62 3	62 6	85 4	84 5	89 6	90 5	100 11	105 1
Monks or Anglers	14 6	49 10	51 6	62 11	81 5	74 8	61 5	65 6	70 0
Mullet, grey	38 2	87 7	49 8	85 9	102 3	79 8	100 7	113 6	135 8
Mullet, red	51 4	94 0	57 11	228 2	325 5	347 5	310 8	465 9	232 7
Plaice	51 6	103 11	124 2	136 2	132 1	122 1	134 9	149 3	153 1
Pollock (Lythe)	15 5	38 0	63 3	76 5	74 2	74 10	81 2	79 4	86 6
Redfish	5 11	30 2	27 11	29 1	28 0	29 3	32 3	33 3	31 7
Saithe	5 4	26 9	24 5	40 7	44 6	39 0	36 8	37 4	37 2
Skates and Rays	24 0	44 0	67 8	78 9	84 10	85 6	90 7	98 8	108 10
Soles	131 10	202 11	210 0	327 7	350 6	244 2	531 8	560 9	544 8
Torsk (Tusk)	10 0	32 6	30 1	41 4	34 7	38 6	46 4	46 5	42 2
Turbot	74 2	180 8	138 6	179 6	218 8	194 11	224 8	315 7	321 1
Whiting	15 0	40 11	45 5	50 2	45 1	41 7	42 8	37 9	44 5
Witches	26 1	62 9	56 4	78 7	72 5	67 8	76 5	72 8	86 9
Other Demersal	16 2	59 3	50 3	58 6	55 6	62 3	59 4	65 6	68 6
Fish Livers	6 7	20 2	20 8	15 9	14 6	14 3	15 3	15 2	15 4
Fish Roes	26 0	61 7	84 0	70 4	88 9	89 7	88 9	79 5	87 9
<b>Total Demersal</b>	<b>17 10</b>	<b>52 5</b>	<b>53 0</b>	<b>70 10</b>	<b>68 0</b>	<b>73 9</b>	<b>80 4</b>	<b>82 2</b>	<b>81 8</b>
Herring	6 3	19 6	21 9	34 9	47 1	31 8	41 8	41 3	35 1
Mackerel	12 4	59 9	50 8	54 5	63 11	61 8	59 7	59 4	62 0
Pilchards	4 9	25 5	23 0	26 5	25 8	24 8	24 7	23 9	26 7
Sprats	5 3	21 3	13 5	16 0	13 2	13 6	9 9	12 4	13 2
Whitebait	7 6	64 8	30 1	65 4	143 2	125 6	140 2	128 4	111 4
Other Pelagic	—	4 1	5 4	11 3	44 1	28 2	31 9	26 7	21 9
<b>Total Pelagic</b>	<b>6 5</b>	<b>20 8</b>	<b>22 5</b>	<b>32 8</b>	<b>37 9</b>	<b>29 9</b>	<b>29 2</b>	<b>31 7</b>	<b>29 5</b>
<b>Total Wet Fish</b>	<b>15 9</b>	<b>46 10</b>	<b>49 3</b>	<b>69 1</b>	<b>66 8</b>	<b>70 9</b>	<b>76 8</b>	<b>79 4</b>	<b>79 1</b>
Oysters	130 0	244 0	298 0	321 10	351 4	306 8	377 9	346 0	371 5
Crabs	16 2	68 5	48 4	83 10	91 11	89 0	94 7	103 7	103 3
Crawfish	172 0	331 10	544 3	388 1	492 5	566 0	524 8	544 4	675 4
Lobsters	92 9	267 10	349 5	521 4	605 11	608 8	752 10	847 10	920 4
Cockles	2 11	8 0	8 0	10 11	11 0	13 9	17 3	16 6	14 8
Escallops and Queens	28 6	56 8	37 5	49 0	56 8	54 2	81 2	61 10	60 3
Mussels	3 11	8 1	10 3	12 10	15 3	15 1	16 7	17 7	17 4
Nephrops	24 6	90 1	79 4	141 4	182 3	166 9	172 1	183 9	221 3
Periwinkles	10 2	20 11	28 1	27 8	35 5	38 0	37 11	37 6	39 6
Shrimps	29 3	71 2	72 6	103 3	129 5	123 10	124 10	131 8	152 7
Squids	n.a.	n.a.	n.a.	n.a.	32 9	58 7	92 4	92 9	87 6
Whelks	7 9	22 11	23 1	36 9	39 0	34 8	39 3	36 3	41 3
Other Shellfish	369 8	870 3	511 9	215 9	453 5	139 11	164 1	930 9	1223 0
<b>Total Shellfish</b>	<b>15 4</b>	<b>41 6</b>	<b>38 0</b>	<b>54 3</b>	<b>54 11</b>	<b>63 5</b>	<b>78 2</b>	<b>72 5</b>	<b>74 3</b>
<b>Total All Fish</b>	<b>15 9</b>	<b>46 8</b>	<b>48 11</b>	<b>68 7</b>	<b>66 3</b>	<b>70 7</b>	<b>76 8</b>	<b>79 2</b>	<b>78 10</b>

n.a. not recorded prior to 1961.

**TABLE 9**

—continued

Average Annual Values of Fish Landed by British Vessels Selected Years 1938–1966

s. d. per cwt.

Kinds of Fish	SCOTLAND								
	1938	1948	1951	1960	1962	1963	1964	1965	1966
	s. d.	s. d.	s. d.	s. d.	s. d.	s. d.	s. d.	s. d.	s. d.
Bream . . . . . (a)	—	—	—	—	—	—	—	—	—
Brill . . . . .	57 0	172 0	108 10	133 10	142 2	140 9	160 8	186 11	194 11
Catfish . . . . .	12 5	29 7	30 9	35 8	37 0	38 5	43 11	46 3	50 2
Cod . . . . .	18 6	37 9	53 10	73 8	68 3	71 9	84 4	84 3	82 1
Conger Eels . . . . .	13 4	34 2	33 9	32 7	33 11	42 1	51 10	54 4	58 6
Dabs, long rough . . . . .	19 6	55 5	43 11	53 9	58 9	62 0	64 5	67 11	73 2
Dabs, other . . . . .									
Dogfish . . . . .	—	—	—	23 1	28 9	28 4	33 1	34 5	39 2
Dory . . . . . (a)	—	—	—	—	—	—	—	—	—
Flounders or Flukes . . . . .	19 5	60 9	28 10	29 1	17 8	16 6	24 8	19 3	15 4
Gurnards . . . . .	5 1	16 2	12 2	21 1	20 0	21 11	24 3	23 10	18 1
Haddock . . . . .	20 2	49 7	65 9	70 0	68 5	68 10	55 7	52 0	63 5
Hake . . . . .	34 8	91 3	121 5	140 3	113 4	155 6	217 4	204 11	175 4
Halibut . . . . .	72 5	162 9	158 2	232 8	255 9	274 1	308 10	312 6	348 4
Lemon Soles . . . . .	71 7	109 8	146 8	175 11	177 8	191 9	210 7	203 3	213 8
Ling . . . . .	11 10	30 9	29 3	40 7	42 1	46 8	54 9	65 1	55 5
Megrims . . . . .	31 6	65 0	62 8	71 4	71 1	74 4	83 0	91 7	85 2
Monks or Anglers . . . . .	7 7	20 4	24 3	60 8	75 9	68 5	62 5	67 4	77 8
Mullet, grey . . . . . (a)	—	—	—	—	—	—	—	—	—
Mullet, red . . . . . (a)	—	—	—	—	—	—	—	—	—
Plaice . . . . .	49 8	110 11	125 0	122 8	119 0	113 4	111 2	125 11	136 2
Pollock (Lythe) . . . . . (a)	—	—	—	53 4	53 0	55 9	60 3	60 4	62 11
Redfish . . . . .	—	—	21 10	24 6	25 11	30 9	28 11	29 2	30 4
Saiche . . . . .	5 7	21 3	17 3	30 10	35 1	27 8	27 10	28 5	28 10
Skates and Rays . . . . .	16 10	41 0	48 10	57 6	61 10	67 0	67 9	75 3	80 1
Soles . . . . . (a)	—	—	—	—	—	—	—	—	—
Torsk (Tusk) . . . . .	9 8	32 2	20 11	39 6	41 1	46 10	55 5	62 10	45 3
Turbot . . . . .	62 6	169 2	112 3	177 3	224 10	207 9	222 3	318 7	311 10
Whiting . . . . .	17 0	42 3	39 3	53 9	49 0	49 8	45 2	37 0	49 7
Witches . . . . .	36 10	62 5	67 8	79 6	76 3	78 3	84 3	91 10	86 10
Other Demersal . . . . .	8 4	29 8	32 11	36 8	34 4	38 8	34 4	49 10	78 1
Fish Livers . . . . .	(d)	(d)	19 9	13 8	14 10	12 9	12 2	11 6	11 3
Fish Roes . . . . .	(d)	(d)	84 9	99 7	110 9	106 8	104 9	79 4	100 0
<b>Total Demersal . . . . .</b>	<b>21 11</b>	<b>49 10</b>	<b>58 11</b>	<b>70 4</b>	<b>67 9</b>	<b>69 0</b>	<b>65 9</b>	<b>62 2</b>	<b>69 0</b>
Herring . . . . .	7 7	21 2	22 4	21 4	28 2	24 8	24 10	28 0	24 0
Mackerel . . . . .	6 1	29 1	13 7	26 2	30 10	33 2	31 8	35 5	28 3
Pilchards . . . . . (a)	—	—	—	—	—	—	—	—	—
Sprats . . . . .	2 10	13 2	8 6	12 1	8 9	3 9	6 1	8 0	7 6
Whitebait . . . . . (a)	—	—	—	—	—	—	—	—	—
Other Pelagic . . . . .	71 3	121 9	163 9	148 7	87 6	137 4	119 3	107 7	109 10
<b>Total Pelagic . . . . .</b>	<b>7 6</b>	<b>21 4</b>	<b>21 10</b>	<b>21 5</b>	<b>26 7</b>	<b>19 2</b>	<b>21 0</b>	<b>20 10</b>	<b>17 4</b>
<b>Total Wet Fish . . . . .</b>	<b>14 3</b>	<b>36 3</b>	<b>44 6</b>	<b>53 2</b>	<b>54 2</b>	<b>50 2</b>	<b>51 2</b>	<b>47 8</b>	<b>46 11</b>
Oysters . . . . .	101 1	354 0	222 3	—	50 0	825 0	70 0	522 10	—
Crabs . . . . .	10 8	75 6	54 0	63 0	60 0	56 10	54 0	53 1	56 8
Crawfish . . . . . (a)	—	—	—	—	—	—	—	—	—
Lobsters . . . . .	97 11	415 0	453 11	549 8	626 2	679 0	745 4	903 9	970 8
Cockles . . . . .	(b)	(b)	(b)	(b)	21 10	20 10	21 5	22 10	—
Escallops and Queens . . . . .	26 1	93 0	65 6	84 0	115 0	99 7	128 7	119 4	130 0
Mussels . . . . .	2 0	4 8	5 6	8 5	14 5	14 2	14 6	15 1	16 8
Nephrops . . . . .	(a)	(a)	(a)	135 5	141 6	147 1	150 10	171 1	178 8
Periwinkles . . . . . (a)	—	—	—	—	—	—	—	—	39 8
Shrimps . . . . .	(b)	(b)	(b)	(b)	100 0	100 0	100 0	100 0	101 10
Squids . . . . .	(c)	(c)	(c)	56 5	82 10	76 11	90 11	77 9	40 9
Whelks . . . . . (a)	—	—	—	—	—	—	—	—	—
Other Shellfish . . . . .	9 4	31 7	34 8	38 8	33 4	35 6	37 4	36 6	40 9
<b>Total Shellfish . . . . .</b>	<b>17 3</b>	<b>103 6</b>	<b>66 1</b>	<b>134 4</b>	<b>144 1</b>	<b>136 4</b>	<b>147 2</b>	<b>172 5</b>	<b>173 10</b>
<b>Total All Fish . . . . .</b>	<b>14 3</b>	<b>37 1</b>	<b>44 10</b>	<b>55 4</b>	<b>57 3</b>	<b>53 0</b>	<b>54 5</b>	<b>50 10</b>	<b>50 4</b>

- (a) Landings were either nil or not separately recorded and included with 'other' fish.
- (b) Prior to 1962 cockles and shrimps were included with 'other shellfish'.
- (c) Prior to 1955 squids were classified as demersal fish and included with 'other demersal' varieties.
- (d) Distributed among different types of demersal fish.



TABLE 9

—concluded

## Average Annual Values of Fish Landed by British Vessels Selected Years 1938–1966

s. d. per cwt.

Kinds of Fish	GREAT BRITAIN								
	1938	1948	1951	1960	1962	1963	1964	1965	1966
	s. d.	s. d.	s. d.	s. d.	s. d.	s. d.	s. d.	s. d.	s. d.
Bream . . . . . (a)	10 1	19 9	14 5	50 1	67 1	101 3	100 10	88 7	85 8
Brill . . . . .	75 10	181 8	158 10	184 9	182 2	156 8	183 4	239 6	197 3
Catfish . . . . .	13 11	30 2	32 3	44 8	36 3	39 2	47 2	46 8	50 5
Cod . . . . .	13 7	45 0	45 0	67 1	60 11	68 2	78 4	80 5	78 4
Conger Eels . . . . .	12 5	32 8	31 8	39 1	41 8	49 8	55 4	58 11	62 4
Dabs, long rough . . . . .	25 5	56 4	54 0	58 10	57 2	57 3	59 6	65 6	69 2
Dabs, other . . . . .				33 1	34 0	41 3	38 11	44 2	44 4
Dogfish . . . . .	(b)	(b)	(b)	35 3	41 6	39 9	43 0	45 6	51 8
Dory . . . . . (a)	18 10	37 9	64 4	73 0	75 1	80 3	80 2	89 0	91 4
Flounders or Flukes . . . . .	18 7	55 3	36 9	45 6	39 10	39 9	49 4	40 5	42 5
Gurnards . . . . .	8 1	18 8	22 7	26 10	27 7	28 11	32 8	35 2	34 5
Haddock . . . . .	19 1	52 5	62 4	72 7	71 6	78 1	69 3	65 5	72 4
Hake . . . . .	36 11	93 4	138 1	194 9	163 4	193 11	240 11	241 10	242 1
Halibut . . . . .	76 11	163 3	173 5	236 11	262 0	271 6	286 2	281 10	325 4
Lemon Soles . . . . .	66 4	109 10	140 5	166 11	172 9	177 0	195 7	198 9	205 6
Ling . . . . .	10 5	32 3	29 10	44 3	41 8	47 6	53 0	55 8	52 0
Megrims . . . . .	23 1	63 2	62 7	78 1	76 9	79 9	85 7	95 0	90 6
Monks or Anglers . . . . .	11 1	31 1	35 10	61 1	77 9	70 7	62 1	66 10	75 4
Mullet, grey . . . . .	38 2	87 7	49 8	85 9	102 3	79 8	100 7	113 6	135 8
Mullet, red . . . . .	51 4	94 0	57 11	227 8	325 5	347 5	310 8	465 9	232 7
Plaice . . . . .	51 3	103 7	124 4	133 8	130 0	120 10	131 3	145 8	150 6
Pollock (Lythe) . . . . .	(b)	38 0	63 4	68 9	65 2	65 6	70 9	71 0	75 8
Redfish . . . . .	(b)	(b)	27 9	28 10	27 11	29 4	32 2	33 1	31 7
Saithe . . . . .	5 5	26 0	23 5	39 6	42 7	36 4	34 9	35 4	35 6
Skates and Rays . . . . .	22 7	43 2	62 10	71 0	76 6	79 2	81 3	89 2	96 2
Soles . . . . . (a)	131 10	202 11	210 0	327 10	350 6	244 2	531 8	560 9	454 8
Torsk (Tusk) . . . . .	9 10	32 3	23 4	40 3	38 9	43 5	51 4	55 9	43 11
Turbot . . . . .	72 1	178 6	132 5	179 10	219 5	197 3	224 2	316 7	318 9
Whiting . . . . .	16 1	41 10	40 11	53 3	48 3	48 2	44 9	37 2	48 11
Witches . . . . .	30 5	62 7	63 3	80 7	75 8	76 11	83 3	87 8	86 10
Other Demersal . . . . .	9 3	32 8	37 6	57 10	54 11	61 9	58 10	64 10	68 9
Fish Livers . . . . .	(b)	(b)	20 7	15 7	14 7	13 11	14 6	14 5	14 5
Fish Roes . . . . .	(b)	(b)	84 3	77 4	95 7	94 7	94 6	79 4	93 5
<b>Total Demersal . . . . .</b>	<b>18 7</b>	<b>51 10</b>	<b>54 2</b>	<b>70 9</b>	<b>67 11</b>	<b>72 5</b>	<b>75 9</b>	<b>75 6</b>	<b>77 6</b>
Herring . . . . .	6 11	20 5	22 1	23 6	31 1	26 3	27 11	30 1	25 4
Mackerel . . . . .	10 4	40 6	28 10	36 7	43 3	45 9	47 5	48 2	48 8
Pilchards . . . . . (a)	4 9	25 5	22 11	26 5	25 8	24 8	24 7	23 9	26 7
Sprats . . . . .	5 0	17 2	11 9	15 5	10 10	5 5	7 7	8 9	8 1
Whitebait . . . . . (a)	7 6	64 8	30 1	65 4	143 2	125 6	140 2	128 4	111 4
Other Pelagic . . . . .	71 3	12 1	52 11	20 4	50 2	29 10	34 8	28 4	22 10
<b>Total Pelagic . . . . .</b>	<b>7 0</b>	<b>21 0</b>	<b>22 1</b>	<b>23 9</b>	<b>29 0</b>	<b>21 8</b>	<b>23 2</b>	<b>22 9</b>	<b>18 10</b>
<b>Total Wet Fish . . . . .</b>	<b>15 4</b>	<b>43 7</b>	<b>48 0</b>	<b>63 11</b>	<b>62 7</b>	<b>63 3</b>	<b>66 10</b>	<b>66 0</b>	<b>64 8</b>
Oysters . . . . .	129 10	244 3	297 6	321 10	350 11	307 8	377 7	346 8	371 5
Crabs . . . . .	15 3	70 1	49 4	76 11	78 2	72 8	75 1	82 6	84 7
Crawfish . . . . . (a)	172 0	331 10	544 3	388 1	492 5	566 0	524 8	544 4	675 4
Lobsters . . . . .	95 5	344 6	349 9	540 0	619 3	652 9	748 2	882 5	949 9
Cockles . . . . .	(b)	(b)	(b)	10 11	11 1	13 11	17 5	16 7	14 8
Escallops and Queens . . . . .	27 10	64 7	57 1	74 2	102 9	92 6	125 8	108 3	121 9
Mussels . . . . .	3 4	7 10	8 8	12 2	15 2	14 11	16 1	17 2	17 2
Nephrops . . . . .	(b)	(b)	(b)	136 11	144 11	148 6	152 3	171 11	184 10
Periwinkles . . . . . (a)	10 2	20 11	28 1	27 8	35 5	38 0	37 11	37 6	39 8
Shrimps . . . . .	(b)	(b)	(b)	103 3	127 1	121 7	123 1	129 2	148 8
Squids . . . . .	—	—	—	n.a.	79 1	73 3	91 9	83 2	72 2
Whelks . . . . . (a)	7 9	22 11	23 1	36 9	39 0	34 8	39 3	36 3	41 3
Other Shellfish . . . . .	12 8	25 0	22 10	53 1	39 0	38 4	39 4	38 4	129 7
<b>Total Shellfish . . . . .</b>	<b>15 9</b>	<b>50 9</b>	<b>42 8</b>	<b>75 5</b>	<b>83 6</b>	<b>91 3</b>	<b>106 5</b>	<b>109 1</b>	<b>108 9</b>
<b>Total All Fish . . . . .</b>	<b>15 4</b>	<b>43 9</b>	<b>47 10</b>	<b>64 3</b>	<b>63 4</b>	<b>64 2</b>	<b>68 1</b>	<b>67 3</b>	<b>66 2</b>

(a) All average values are based on landings in England and Wales only. Landings in Scotland were either non-existent or negligible and included with 'other' fish.

(b) Average values for Great Britain not available. Landings in Scotland of these species in the years indicated were included with 'Other Demersal' or 'Other Shellfish' as the case may be.

## Consumption Level Estimates for Fish

### TABLE 10

**Supplies per head per annum moving into consumption in the United Kingdom**

lb. per head

	Pre-war	1948	1951	1955	1960	1962	1963	1964	1965	1966
<b>Fish</b>										(prov.)
Fresh, frozen and cured (wet fillet equivalent)	21.8	28.7	22.0	19.0	18.2	17.7	16.4	17.3	17.4	16.8
Shell Fish (edible weight)	0.9	0.7	0.8	0.7	0.7	0.7	0.7	0.7	0.7	0.9
Canned Fish (imported)	3.5	1.8	1.2	1.6	2.5	3.2	2.6	3.2	2.8	2.9
<b>Total (edible weight)</b>	<b>26.2</b>	<b>31.2</b>	<b>24.0</b>	<b>21.3</b>	<b>21.4</b>	<b>21.6</b>	<b>19.7</b>	<b>21.2</b>	<b>20.9</b>	<b>20.6</b>

- Notes**
- (i) These statistics are based on total supplies moving into consumption and as such measure disappearance rather than final consumption, since it is not practicable to measure changes in wholesale and retail stock levels.
  - (ii) The figures include consumption not only in private households but also in institutions and catering establishments, and by H.M. Forces in the United Kingdom. Comprehensive tables of food consumption levels in the United Kingdom are published annually in the Board of Trade Journal and in the Annual Abstract of Statistics.
  - (iii) More detailed estimates of the consumption of fish and other foods in private households are published in the annual reports of the National Food Survey Committee.

## Fishermen and Fishing Vessels

### TABLE 11

#### FISHERMEN

As at 31st December of each year

	ENGLAND and WALES (a)		SCOTLAND (b)		NORTHERN IRELAND		UNITED KINGDOM	
	Regularly Employed	Partially Employed	Regularly Employed	Partially Employed	Regularly Employed	Partially Employed	Regularly Employed	Partially Employed
1938	26,062	2,949	12,976	4,939	342	556	39,380	8,444
1948	25,946	3,373	12,080	5,148	800	300	38,826	8,821
1951	23,705	3,685	10,934	3,597	550	90	35,189	7,372
1960	12,712	3,646	8,795	2,451	500	150	22,007	6,247
1962	12,898	3,635	8,441	2,169	461	144	21,800	5,948
1963	12,145	3,506	8,289	2,238	450	150	20,884	5,894
1964	11,566	3,862	8,181	2,068	450	150	20,197	6,080
1965	11,064	4,045	8,057	2,088	480	140	19,601	6,273
1966	(c) 10,641	3,300	8,073	2,084	500	140	19,214	5,524

- (a) Prior to 1952 figures were based on information supplied by the Registrar General of Shipping and Seaman. Since 1952 figures have been supplied by the District Fishery Officers of the Ministry of Agriculture, Fisheries and Food.
- (b) Prior to 1961 Scottish figures were as at 30th November of each year.
- (c) The 1966 figures for England and Wales exclude 1201 'hobby fishermen' i.e. fishermen who did not fish commercially.

**TABLE 12**

**UNITED KINGDOM**  
**Age Distribution by Ports of Vessels of 80 ft. and over Registered Length\***  
**As at 31st December, 1966**

	YEARS OF CONSTRUCTION														Total			
	Pre 1921	1921-30	1931-40	1941-45	1946-50	1951-55	1956	1957	1958	1959	1960	1961	1962	1963		1964	1965	1966
<b>ENGLAND and WALES:</b>																		
Fleetwood . . . . .	4		3	2	3	9	9	4	4	5	5	3	2	1	4	2(1)	60(1)	
Grimsby . . . . .					22	10	9	10	10	11(1)	18(1)	22	20	2	2(1)	6(2)	144(7)	
Hull . . . . .			2	1	41	21	6	7	5	3	7	4(1)	6(1)	3	2(2)	1(1)	117(13)	
Lowestoft . . . . .	1	3	8	4	9	23	5	9	5	11	11	16	6		3		114	
Millford Haven . . . . .		14		2			2		2				3			2	26	
North Shields . . . . .				1													9(3)	
Other Ports . . . . .		2		1	5	1(1)				1	2	2			2(2)	1(1)	9(1)	
<b>Total</b> . . . . .	5	19	13	11	80	64(1)	31	30	26	31(1)	43(1)	47(1)	37(1)	6	5(3)	16(5)	479(25)	
<b>SCOTLAND</b>																		
Aberdeen . . . . .	1	1	2	1	1	4	4	13	12	10	28	24	3			1	108	
Leith . . . . .							4	3	1	1	5	2	2				19	
Other Districts . . . . .					1												1	
<b>Total</b> . . . . .	1	1	2	1	2	4	8	16	13	11	33	26	5	3	—	1	128	
<b>GREAT BRITAIN</b> . . . . .	6	20	15	12	82	68(1)	39	46	39	42(1)	76(1)	73(1)	42(1)	9	5(3)	17(5)	607(25)	
<b>NORTHERN IRELAND</b> . . . . .					1												1	
<b>UNITED KINGDOM</b> . . . . .	6	20	15	12	83	68(1)	39	46	39	42(1)	76(1)	73(1)	42(1)	9	5(3)	17(5)	608(25)	

\* Includes trawlers, drifter trawlers, drifters, great liners and seiners.  
 The figures in brackets indicate the number of freezer and factory trawlers included.

**TABLE 13**

**UNITED KINGDOM**  
**Fishing Vessels by Main Ports as at 31st December 1966**

	TRAWLERS											TOTAL	Drifter Trawlers (Motor)	DRIFTERS (MOTOR)				
	Under 40 ft.	40 to 79.9 ft.		80 to 109.9 ft.		110 to 139.9 ft.			140 ft. and Over					80 to 109.9 ft.	Under 40 ft.	40 to 79.9 ft.	80 to 109.9 ft.	TOTAL
	Motor	Motor		Motor		Motor		Steam	Motor (b)		Steam							
	Side	Side	Stern	Side	Stern	Side	Stern	Side	Side	Stern	Side							
<b>ENGLAND and WALES</b>																		
Fleetwood . . . . .	10	35	1	11		36			5	1	7							
Grimsby . . . . .	1	4		20	3	56	2	1	19	7	36							
Hull . . . . .						1			31	13	72							
Lowestoft . . . . .	12	10		83		13(a)			1				16	18	1	1		20
Milford Haven . . . . .	2			23		2	1											
North Shields . . . . .	2	9		1		4		1										
Other Ports . . . . .	463	201	3	8														45
<b>TOTAL</b> . . . . .	<b>490</b>	<b>259</b>	<b>4</b>	<b>146</b>	<b>3</b>	<b>112</b>	<b>3</b>	<b>2</b>	<b>56</b>	<b>25</b>	<b>115</b>	<b>1,215</b>	<b>16</b>	<b>54</b>	<b>10</b>	<b>1</b>	<b>65</b>	
<b>SCOTLAND</b>																		
Aberdeen . . . . .		18		43		56		1	3			121						
Buckie . . . . .	6	40	1									47			4			4
Fraserburgh . . . . .	5	15										20			35			35
Leith . . . . .	11	25		11		8						55						
Lossiemouth . . . . .		8										8		1	5			6
Other Districts . . . . .	40	77										117			22			22
<b>TOTAL</b> . . . . .	<b>62</b>	<b>183</b>	<b>1</b>	<b>54</b>	<b>—</b>	<b>64</b>	<b>—</b>	<b>1</b>	<b>3</b>	<b>—</b>	<b>—</b>	<b>368</b>	<b>—</b>	<b>1</b>	<b>66</b>	<b>—</b>	<b>67</b>	
<b>GREAT BRITAIN</b> . . . . .	<b>552</b>	<b>442</b>	<b>5</b>	<b>200</b>	<b>3</b>	<b>176</b>	<b>3</b>	<b>3</b>	<b>59</b>	<b>25</b>	<b>115</b>	<b>1,583</b>	<b>16</b>	<b>55</b>	<b>76</b>	<b>1</b>	<b>132</b>	
<b>NORTHERN IRELAND</b> . . . . .	<b>8</b>	<b>57</b>		<b>1</b>								<b>66</b>						
<b>UNITED KINGDOM</b>																		
1966	560	499	5	201	3	176	3	3	59	25	115	1,649	16	55	76	1	132	
1961	1,320	226	1	187		169		75	30	5	193	2,206	36	52	106	1	159	
1962	1,335	247	1	201		186		32	38	6	183	2,229	37	67	118		185	
1963	1,361	298	1	208	1	184	1	22	45	6	156	2,283	22	74	92	4	170	
1964	1,384	364	3	204	2	181	1	15	48	9	146	2,357	21	77	86	2	165	
1965	1,418	424	4	201	3	180	3	10	50	13	133	2,439	19	83	82	1	166	

(a) Includes 1 purse seiner.  
 (b) All the stern trawlers of 140 ft. and over reg. length were freezers or factory vessels.  
 (c) The 1966 figures for England and Wales exclude vessels which were not used at all for commercial fishing; the comparable figures with previous years, including all registered vessels for England and Wales, were 5,181 for E. & W. and 8,265 for the U.K. The corresponding series of figures for Scotland and Northern Ireland exclude vessels not engaged in commercial fishing.

TABLE 13

—concluded

UNITED KINGDOM  
Fishing Vessels by Main Ports as at 31st December 1966

	SEINERS (MOTOR)				LINERS				RINGNETTERS (MOTOR)			OTHERS				Total all vessels	
	Under 40 ft.	40 to 79.9 ft.	80 to 109.9 ft.	Total	Under 40 ft.	40 to 79.9 ft.	80 to 109.9 ft.	Total	Under 40 ft.	40 to 79.9 ft.	Total	Under 40 ft.		40 to 79.9 ft.	Total		
												Motor	Other than Motor				
												Motor	Motor				
<b>ENGLAND and WALES</b>																	
Fleetwood . . .		6		6		1		1								113	
Grimsby . . .		93		93		2		2				4		1	5	249	
Hull . . .		6		6												123	
Lowestoft . . .						1		1				2			2	158	
Milford Haven . . .						1		1				4			4	33	
North Shields . . .		12		12		2		2		1	1	6		1	7	42	
Other Ports . . .	3	35		38	55		60	115				1,633	8	48	1,689	2,563	
<b>TOTAL</b>	<b>3</b>	<b>152</b>	<b>—</b>	<b>155</b>	<b>55</b>	<b>—</b>	<b>67</b>	<b>—</b>	<b>122</b>	<b>—</b>	<b>1</b>	<b>1</b>	<b>1,649</b>	<b>8</b>	<b>50</b>	<b>1,707</b>	<b>3,281</b>
																	(c)
<b>SCOTLAND</b>																	
Aberdeen . . .	10	18		28	20		5	25				14				14	188
Buckie . . .		48		48	16			16				1			1	116	
Fraserburgh . . .	3	39		42	44		5	49				13			13	159	
Leith . . .	1	26		27				9				40		8	48	139	
Lossiemouth . . .		85		85	9					6	6	25			25	130	
Other Districts . . .	53	287	1	341	436	7	12	455	4	67	71	1,083	4	50	1,137	2,143	
<b>TOTAL</b>	<b>67</b>	<b>503</b>	<b>1</b>	<b>571</b>	<b>525</b>	<b>7</b>	<b>17</b>	<b>5</b>	<b>554</b>	<b>4</b>	<b>73</b>	<b>77</b>	<b>1,176</b>	<b>4</b>	<b>58</b>	<b>1,238</b>	<b>2,875</b>
<b>GREAT BRITAIN</b>	<b>70</b>	<b>655</b>	<b>1</b>	<b>726</b>	<b>580</b>	<b>7</b>	<b>84</b>	<b>5</b>	<b>676</b>	<b>4</b>	<b>74</b>	<b>78</b>	<b>2,825</b>	<b>12</b>	<b>108</b>	<b>2,945</b>	<b>6,156</b>
<b>NORTHERN IRELAND</b>	<b>6</b>	<b>12</b>		<b>18</b>	<b>125</b>				<b>125</b>								<b>209</b>
<b>UNITED KINGDOM</b>																	(c)
1966	76	667	1	744	705	7	84	5	801	4	74	78	2,825	12	108	2,945	6,365
1961	185	805	—	990	2,108		144	9	2,150	1	96	97	1,968	286	90	2,344	8,093
1962	182	752	—	934	2,067		128	8	2,138	1	97	98	2,024	284	98	2,406	8,092
1963	178	719	—	897	2,086		125	7	2,218	1	97	98	2,026	224	94	2,344	8,032
1964	146	681	1	828	2,031		100	7	2,203	2	81	83	2,113	207	104	2,424	8,016
1965	133	662	1	796	2,048		95	7	2,261	4	75	79	2,162	208	111	2,481	8,130

**International Trade of the United Kingdom  
with Commonwealth Preference Area, E.F.T.A., E.E.C.  
and all other countries**

**TABLE 14**

**UNITED KINGDOM  
Imports of Fish and Fish Preparations in 1965 and 1966**

H.M. CUSTOMS STATISTICAL CLASSIFICATION	1965		1966	
	'000 cwts.	£'000 (c.i.f.)	'000 cwts.	£'000 (c.i.f.)
<b>WET FISH</b>				
<b>Fresh, Chilled or Frozen</b>				
Fish roes . . . . .	17	150	20	189
<i>Fresh, including Chilled:</i>				
Cod . . . . .	338	1,351	444	1,659
Haddock . . . . .	200	883	176	792
Halibut . . . . .	11	156	10	148
Herring . . . . .	92	191	102	204
Plaice . . . . .	221	1,803	210	1,688
Salmon . . . . .	15	565	13	555
Trout . . . . .	16	259	15	276
Other . . . . .	267	1,940	281	1,902
<b>Total Fresh and Chilled . . . . .</b>	<b>1,160</b>	<b>7,148</b>	<b>1,251</b>	<b>7,224</b>
<i>Frozen:</i>				
In packs put up for retail sale . . . . .	•	•	120	1,998
<i>Fillets (not packed for retail sale):</i>				
Cod . . . . .	529	5,233	296	3,025
Haddock . . . . .	132	1,541	90	996
Plaice . . . . .	131	2,561	56	1,010
Other . . . . .	77	687	78	733
<b>Total Frozen . . . . .</b>	<b>1,343</b>	<b>15,735</b>	<b>1,130</b>	<b>14,159</b>
<b>Total Fresh, Chilled and Frozen . . . . .</b>	<b>2,520</b>	<b>23,033</b>	<b>2,401</b>	<b>21,572</b>
<b>Salted, in Brine, Dried or Smoked</b>				
Wet salted, split . . . . .	81	479	81	497
<i>Other descriptions:</i>				
Herring . . . . .	3	14	6	27
Other, including roes . . . . .	15	222	15	245
<b>Total Salted etc. . . . .</b>	<b>99</b>	<b>715</b>	<b>102</b>	<b>769</b>

TABLE 14  
—concluded

UNITED KINGDOM  
Imports of Fish and Fish Preparations in 1965 and 1966

H.M. CUSTOMS STATISTICAL CLASSIFICATION	1965		1966	
	'000 cwts.	£'000 (c.i.f.)	'000 cwts.	£'000 (c.i.f.)
<b>Prepared or Preserved</b>				
Caviar and caviar substitutes . . . . .	1	226	1	346
Other:				
In airtight containers:				
Brisling . . . . .	30	789	33	944
Herring . . . . .	4	65	6	89
Pilchards . . . . .	223	1,605	285	2,056
Roes . . . . .	32	531	58	857
Salmon, canned . . . . .	862	28,252	600	20,102
Sardines . . . . .	127	1,718	139	1,879
Sild . . . . .	22	283	18	302
Tuna, canned . . . . .	48	686	62	983
Other, including pastes . . . . .	29	461	29	528
Not in airtight containers . . . . .	12	130	8	97
<b>Total Prepared and Preserved . . . . .</b>	<b>1,390</b>	<b>34,746</b>	<b>1,239</b>	<b>28,183</b>
<b>Total Wet Fish . . . . .</b>	<b>4,009</b>	<b>58,494</b>	<b>3,742</b>	<b>50,524</b>
<b>SHELLFISH (CRUSTACEANS AND MOLLUSCS)</b>				
<b>Fresh, Chilled, Frozen, Salted, in Brine or Dried</b>				
Frozen . . . . .	81	3,126	92	3,953
Fresh:				
Oysters . . . . .	8	62	9	62
Prawns . . . . .	13	325	7	236
Other, including edible snails. . . . .	44	85	19	107
Other . . . . .	10	55	6	52
<b>Total Fresh, Chilled, etc. . . . .</b>	<b>156</b>	<b>3,653</b>	<b>133</b>	<b>4,410</b>
<b>Prepared or Preserved . . . . .</b>				
In airtight containers:				
Crab . . . . .	38	1,962	34	1,924
Lobster (excluding "Norway lobster" or "Dublin Bay Prawns") . . . . .	3	291	3	188
Prawns and Shrimps, canned . . . . .	50	1,726	51	1,978
Other, including pastes . . . . .	18	331	22	390
Not in airtight containers: . . . . .	44	925	69	2,299
<b>Total Prepared and Preserved . . . . .</b>	<b>153</b>	<b>5,235</b>	<b>179</b>	<b>6,779</b>
<b>Total Shellfish . . . . .</b>	<b>309</b>	<b>8,888</b>	<b>312</b>	<b>11,189</b>
<b>Total all Fish . . . . .</b>	<b>4,318</b>	<b>67,382</b>	<b>4,054</b>	<b>61,713</b>

\* These items were not shown separately in 1965 when they were included as fillets or other frozen fish.

**TABLE 15**

**UNITED KINGDOM  
IMPORTS OF FISH AND FISH PREPARATIONS  
Quantity in '000 cwts**

Country of Consignment	WET FISH											
	Fresh, chilled or frozen										Semi- Preserved	
	Frozen Boneless*		Other fresh, chilled or frozen						Total fresh, chilled or frozen			
			White Fish		Herring		Other					
1965	1966	1965	1966	1965	1966	1965	1966	1965	1966	1965	1966	
<b>COMMONWEALTH PREFERENCE</b>												
Canada . . . . .	42	47	71	38	1	—	46	55	160	140	3	...
Irish Republic . . . . .	4	1	17	9	44	46	17	16	82	72	2	4
Rep. of S. Africa . . . . . (inc. S.W. Africa)	48	72	58	51	—	—	—	—	106	123	...	...
Others . . . . .	...	...	...	3	...	—	—	—	...	3	1	...
<b>Total . . . . .</b>	<b>94</b>	<b>120</b>	<b>146</b>	<b>101</b>	<b>45</b>	<b>46</b>	<b>63</b>	<b>71</b>	<b>348</b>	<b>338</b>	<b>6</b>	<b>4</b>
<b>E.F.T.A.</b>												
Denmark . . . . .	204	161	229	336	11	10	19	14	463	521	4	4
Greenland . . . . .	27	8	—	—	—	—	...	...	27	8	—	—
Norway . . . . .	336	290	218	154	13	38	11	6	578	488	8	10
Portugal . . . . .	—	...	1	1	—	—	—	—	1	1	...	...
Sweden . . . . .	—	...	11	20	25	10	...	...	36	30	...	...
Others . . . . .	...	—	...	—	—	—	—	—	...	—	...	—
<b>Total . . . . .</b>	<b>567</b>	<b>459</b>	<b>459</b>	<b>511</b>	<b>49</b>	<b>58</b>	<b>30</b>	<b>20</b>	<b>1,105</b>	<b>1,048</b>	<b>12</b>	<b>14</b>
<b>E.E.C.</b>												
Belgium . . . . .	1	1	108	188	...	...	...	...	109	189	...	...
France . . . . .	...	...	5	2	...	—	...	—	5	2	...	...
Western Germany . . . . .	40	34	8	15	...	...	—	—	48	49	—	1
Netherlands . . . . .	7	8	124	125	2	...	...	1	133	134	3	2
Others . . . . .	—	—	—	—	—	—	—	—	—	—	—	...
<b>Total . . . . .</b>	<b>48</b>	<b>43</b>	<b>245</b>	<b>330</b>	<b>2</b>	<b>...</b>	<b>...</b>	<b>1</b>	<b>295</b>	<b>374</b>	<b>3</b>	<b>3</b>
<b>OTHER COUNTRIES</b>												
Faroe Islands . . . . .	11	9	118	117	2	—	—	—	131	126	21	29
Iceland . . . . .	148	16	424	365	1	10	...	...	573	391	55	51
Japan . . . . .	1	4	19	32	...	—	8	2	28	38	...	...
Peru . . . . .	—	—	—	—	—	—	—	—	—	—	—	...
U.S.A. . . . .	...	2	4	6	—	—	18	36	22	44	1	...
U.S.S.R. . . . .	—	—	...	...	15	32	—	—	15	32	—	—
Others . . . . .	...	...	3	10	—	—	...	...	3	10	1	1
<b>Total . . . . .</b>	<b>160</b>	<b>31</b>	<b>568</b>	<b>530</b>	<b>18</b>	<b>42</b>	<b>26</b>	<b>38</b>	<b>772</b>	<b>641</b>	<b>78</b>	<b>81</b>
<b>All Countries Total . . . . .</b>	<b>869</b>	<b>653</b>	<b>1,418</b>	<b>1,472</b>	<b>114</b>	<b>146</b>	<b>119</b>	<b>130</b>	<b>2,520</b>	<b>2,401</b>	<b>99</b>	<b>102</b>

\* Actual Weight



TABLE 15

—concluded

UNITED KINGDOM  
IMPORTS OF FISH AND FISH PREPARATIONS  
Quantity in '000 cwts

Country of Consignment	WET FISH (contd.)				SHELLFISH						Total Fish and Fish Preparations		
	Prepared or Preserved, including in airtight containers		Total Wet Fish and Wet Fish Preparations		Fresh chilled, frozen or semi- preserved		Prepared or Preserved, including in airtight containers		Total Shellfish and Shellfish Preparations		1965	1966	
	1965	1966	1965	1966	1965	1966	1965	1966	1965	1966			
<b>COMMONWEALTH PREFERENCE</b>													
Canada . . . . .	133	110	296	250	2	1	5	6	7	7	303	257	
Irish Republic . . . . .	...	1	84	77	22	12	2	1	24	13	108	90	
Rep. of S. Africa . . . . . (inc. S.W. Africa)	225	288	331	411	1	...	...	1	1	1	332	412	
Others . . . . .	3	1	4	4	9	8	10	20	19	28	23	32	
<b>Total . . . . .</b>	<b>361</b>	<b>400</b>	<b>715</b>	<b>742</b>	<b>34</b>	<b>21</b>	<b>17</b>	<b>28</b>	<b>51</b>	<b>49</b>	<b>766</b>	<b>791</b>	
<b>E.F.T.A.</b>													
Denmark . . . . .	7	21	474	546	22	9	18	17	40	26	514	572	
Greenland . . . . .	—	—	27	8	...	1	...	—	...	1	27	9	
Norway . . . . .	84	90	670	588	57	39	11	8	68	47	738	635	
Portugal . . . . .	129	143	130	144	5	6	...	—	5	6	135	150	
Sweden . . . . .	1	1	37	31	—	...	1	1	1	1	38	32	
Others . . . . .	...	...	...	...	—	...	—	—	—	...	...	...	
<b>Total . . . . .</b>	<b>221</b>	<b>255</b>	<b>1,338</b>	<b>1,317</b>	<b>84</b>	<b>55</b>	<b>30</b>	<b>26</b>	<b>114</b>	<b>81</b>	<b>1,452</b>	<b>1,398</b>	
<b>E.E.C.</b>													
Belgium . . . . .	...	...	109	189	...	1	—	...	...	1	109	190	
France . . . . .	...	...	5	2	2	3	1	1	3	4	8	6	
Western Germany . . . . .	7	11	55	61	...	1	1	...	1	1	56	62	
Netherlands . . . . .	1	1	137	137	10	13	16	17	26	30	163	167	
Others . . . . .	...	...	...	...	...	—	...	...	...	...	...	...	
<b>Total . . . . .</b>	<b>8</b>	<b>12</b>	<b>306</b>	<b>389</b>	<b>12</b>	<b>18</b>	<b>18</b>	<b>18</b>	<b>30</b>	<b>36</b>	<b>336</b>	<b>425</b>	
<b>OTHER COUNTRIES</b>													
Faroe Islands . . . . .	—	—	152	155	—	—	—	—	—	—	152	155	
Iceland . . . . .	4	4	632	446	3	4	...	1	3	5	635	451	
Japan . . . . .	549	355	577	393	1	3	61	60	62	63	639	456	
Peru . . . . .	39	34	39	34	—	—	—	—	—	—	39	34	
U.S.A. . . . .	155	120	178	164	1	5	15	24	16	29	194	193	
U.S.S.R. . . . .	36	50	51	82	—	—	6	7	6	7	57	89	
Others . . . . .	17	9	21	20	21	27	6	15	27	42	48	62	
<b>Total . . . . .</b>	<b>800</b>	<b>572</b>	<b>1,650</b>	<b>1,294</b>	<b>26</b>	<b>39</b>	<b>88</b>	<b>107</b>	<b>114</b>	<b>146</b>	<b>1,764</b>	<b>1,440</b>	
<b>All Countries Total . . . . .</b>	<b>1,390</b>	<b>1,239</b>	<b>4,009</b>	<b>3,742</b>	<b>156</b>	<b>133</b>	<b>153</b>	<b>179</b>	<b>309</b>	<b>312</b>	<b>4,318</b>	<b>4,054</b>	

TABLE 16

**UNITED KINGDOM**  
**IMPORTS OF FISH AND FISH PREPARATIONS**  
 Value (c.i.f.) in £'000

Country of Consignment	WET FISH											
	Fresh, chilled or frozen										Semi- Preserved	
	Frozen Boneless		Other fresh, chilled or frozen						Total fresh chilled or frozen			
			White Fish		Herring		Other					
1965	1966	1965	1966	1965	1966	1965	1966	1965	1966	1965	1966	
<b>COMMONWEALTH PREFERENCE</b>												
Canada . . . . .	428	560	849	624	2	—	1,236	1,492	2,515	2,676	19	...
Irish Republic . . . . .	28	4	192	134	94	115	611	647	925	900	31	33
Rep. of S. Africa (inc. S.W. Africa) . . . . .	365	549	280	327	—	—	—	—	645	876	...	...
Others . . . . .	...	3	5	32	...	—	—	—	5	35	10	12
<b>Total . . . . .</b>	<b>821</b>	<b>1,116</b>	<b>1,326</b>	<b>1,117</b>	<b>96</b>	<b>115</b>	<b>1,847</b>	<b>2,139</b>	<b>4,090</b>	<b>4,487</b>	<b>60</b>	<b>45</b>
<b>E.F.T.A.</b>												
Denmark . . . . .	3,280	2,631	1,979	2,109	22	22	418	246	5,699	5,008	44	45
Greenland . . . . .	273	83	—	—	—	—	...	1	273	84	—	—
Norway . . . . .	3,599	3,218	1,515	1,248	27	52	502	356	5,643	4,874	105	136
Portugal . . . . .	—	6	11	10	—	—	—	—	11	16	...	...
Sweden . . . . .	—	6	27	47	52	19	1	3	80	75	...	2
Others . . . . .	1	—	2	—	—	—	—	—	3	—	...	—
<b>Total . . . . .</b>	<b>7,153</b>	<b>5,944</b>	<b>3,534</b>	<b>3,414</b>	<b>101</b>	<b>93</b>	<b>921</b>	<b>606</b>	<b>11,709</b>	<b>10,057</b>	<b>149</b>	<b>183</b>
<b>E.E.C.</b>												
Belgium . . . . .	15	25	676	956	...	...	...	...	691	981	...	...
France . . . . .	...	...	31	25	...	...	1	...	32	25	...	...
Western Germany . . . . .	342	277	32	61	...	...	...	...	374	338	...	7
Netherlands . . . . .	103	122	1,156	1,164	1	...	...	1	1,260	1,287	35	31
Others . . . . .	—	—	—	—	—	—	—	—	—	—	—	...
<b>Total . . . . .</b>	<b>460</b>	<b>424</b>	<b>1,895</b>	<b>2,206</b>	<b>1</b>	<b>...</b>	<b>1</b>	<b>1</b>	<b>2,357</b>	<b>2,631</b>	<b>35</b>	<b>38</b>
<b>OTHER COUNTRIES</b>												
Faroe Islands . . . . .	108	94	459	468	5	—	—	—	572	562	121	159
Iceland . . . . .	1,444	181	1,767	1,764	2	30	...	3	3,213	1,978	336	334
Japan . . . . .	32	76	276	432	—	—	186	51	494	559	...	1
Peru . . . . .	—	—	—	—	—	—	—	—	—	—	—	1
U.S.A. . . . .	4	40	78	123	—	—	432	964	514	1,127	4	...
U.S.S.R. . . . .	—	—	1	...	44	100	—	—	45	100	—	—
Others . . . . .	...	1	20	70	—	—	19	...	39	71	10	8
<b>Total . . . . .</b>	<b>1,588</b>	<b>392</b>	<b>2,601</b>	<b>2,857</b>	<b>51</b>	<b>130</b>	<b>637</b>	<b>1,018</b>	<b>4,877</b>	<b>4,397</b>	<b>471</b>	<b>503</b>
<b>Total All Countries . . . . .</b>	<b>10,022</b>	<b>7,876</b>	<b>9,356</b>	<b>9,594</b>	<b>249</b>	<b>338</b>	<b>3,406</b>	<b>3,764</b>	<b>23,033</b>	<b>21,572</b>	<b>715</b>	<b>769</b>

TABLE 16

—concluded

UNITED KINGDOM  
IMPORTS OF FISH AND FISH PREPARATIONS  
Value (c.i.f.) in £'000

Country of Consignment	WET FISH (contd.)				SHELLFISH						Total Fish and Fish Preparations		
	Prepared or Preserved, including in airtight containers		Total Wet Fish and Wet Fish Preparations		Fresh, chilled, frozen, or semi- preserved		Prepared or Preserved, including in airtight containers		Total Shellfish and Shellfish Preparations		1965	1966	
	1965	1966	1965	1966	1965	1966	1965	1966	1965	1966			
<b>COMMONWEALTH PREFERENCE</b>													
Canada . . . . .	4,262	3,367	6,796	6,043	89	86	367	302	456	388	7,252	6,431	
Irish Republic . . . . .	1	18	957	951	98	126	68	61	166	187	1,123	1,138	
Rep. of S. Africa . . . . . (inc. S.W. Africa)	1,613	2,071	2,258	2,947	36	11	13	12	49	23	2,307	2,970	
Others . . . . .	40	34	55	81	309	273	304	711	613	984	668	1,065	
<b>Total . . . . .</b>	<b>5,916</b>	<b>5,490</b>	<b>10,066</b>	<b>10,022</b>	<b>532</b>	<b>496</b>	<b>752</b>	<b>1,086</b>	<b>1,284</b>	<b>1,582</b>	<b>11,350</b>	<b>11,604</b>	
<b>E.F.T.A.</b>													
Denmark . . . . .	115	227	5,858	5,280	44	117	302	273	346	390	6,204	5,670	
Greenland . . . . .	—	—	273	84	17	21	—	—	17	21	290	105	
Norway . . . . .	1,670	1,894	7,418	6,904	2,022	1,987	442	322	2,464	2,309	9,882	9,213	
Portugal . . . . .	1,805	1,975	1,816	1,991	16	19	2	—	18	19	1,834	2,010	
Sweden . . . . .	23	30	103	107	—	—	26	36	26	36	129	143	
Others . . . . .	71	45	74	45	—	—	—	—	—	—	74	45	
<b>Total . . . . .</b>	<b>3,684</b>	<b>4,171</b>	<b>15,542</b>	<b>14,411</b>	<b>2,099</b>	<b>2,144</b>	<b>772</b>	<b>631</b>	<b>2,871</b>	<b>2,775</b>	<b>18,413</b>	<b>17,186</b>	
<b>E.E.C.</b>													
Belgium . . . . .	1	—	692	981	—	23	—	3	—	26	692	1,007	
France . . . . .	16	18	48	43	60	57	26	23	86	80	134	123	
Western Germany . . . . .	145	244	519	589	1	38	24	28	25	66	544	655	
Netherlands . . . . .	9	21	1,304	1,339	26	74	87	107	113	181	1,417	1,520	
Others . . . . .	4	4	4	4	—	—	1	3	1	3	5	7	
<b>Total . . . . .</b>	<b>175</b>	<b>287</b>	<b>2,567</b>	<b>2,956</b>	<b>87</b>	<b>192</b>	<b>138</b>	<b>164</b>	<b>225</b>	<b>356</b>	<b>2,792</b>	<b>3,312</b>	
<b>OTHER COUNTRIES</b>													
Faroe Islands . . . . .	—	—	693	720	—	—	—	—	—	—	693	720	
Iceland . . . . .	43	50	3,592	2,363	138	237	15	28	153	265	3,745	2,628	
Japan . . . . .	19,002	12,009	19,496	12,569	30	137	2,426	2,721	2,456	2,858	21,952	15,427	
Peru . . . . .	539	494	539	495	—	—	—	—	—	—	539	495	
U.S.A. . . . .	4,237	3,905	4,755	5,032	38	233	579	980	617	1,213	5,372	6,245	
U.S.S.R. . . . .	906	1,565	951	1,665	—	—	358	461	358	461	1,309	2,126	
Others . . . . .	244	212	293	291	729	971	195	708	924	1,679	1,217	1,970	
<b>Total . . . . .</b>	<b>24,971</b>	<b>18,235</b>	<b>30,319</b>	<b>23,135</b>	<b>935</b>	<b>1,578</b>	<b>3,573</b>	<b>4,898</b>	<b>4,508</b>	<b>6,476</b>	<b>34,827</b>	<b>29,611</b>	
<b>All Countries Total . . . . .</b>	<b>34,746</b>	<b>28,183</b>	<b>58,494</b>	<b>50,524</b>	<b>3,653</b>	<b>4,410</b>	<b>5,235</b>	<b>6,779</b>	<b>8,888</b>	<b>11,189</b>	<b>67,382</b>	<b>61,713</b>	

TABLE 17

**UNITED KINGDOM**  
**Imports of Fish and Marine Mammal Products**

Country of Consignment	Meals and Flours				Oils				Whale Meat				Total	
	'000 cwt.		£'000		'000 cwt.		£'000		'000 cwt.		£'000		£'000	
	1965	1966	1965	1966	1965	1966	1965	1966	1965	1966	1965	1966	1965	1966
<b>COMMONWEALTH PREFERENCE</b>														
Australia . . . . .	—	—	—	—	103	44	301	138	—	—	—	—	301	138
Canada . . . . .	342	263	1,104	895	87	13	360	52	7	11	37	54	1,501	1,001
Rep. of S. Africa . . . . . (incl. S.W. Africa)	2,093	1,866	6,088	6,237	910	507	3,324	1,802	18	5	83	24	9,495	8,063
Others . . . . .	28	25	67	71	26	4	142	34	...	—	...	—	209	105
<b>Total</b> . . . . .	<b>2,463</b>	<b>2,154</b>	<b>7,259</b>	<b>7,203</b>	<b>1,126</b>	<b>568</b>	<b>4,127</b>	<b>2,026</b>	<b>25</b>	<b>16</b>	<b>120</b>	<b>78</b>	<b>11,506</b>	<b>9,307</b>
<b>E.F.T.A.</b>														
Denmark . . . . .	711	635	2,550	2,288	1,070	890	4,381	3,133	—	—	—	—	6,931	5,421
Norway . . . . .	1,567	1,548	5,320	5,503	571	1,683	2,188	5,549	170	134	712	654	8,220	11,706
Portugal . . . . .	—	—	—	—	95	108	371	374	—	—	—	—	371	374
Others . . . . .	19	—	46	—	11	1	33	2	—	—	—	—	79	2
<b>Total</b> . . . . .	<b>2,297</b>	<b>2,183</b>	<b>7,916</b>	<b>7,791</b>	<b>1,747</b>	<b>2,682</b>	<b>6,973</b>	<b>9,058</b>	<b>170</b>	<b>134</b>	<b>712</b>	<b>654</b>	<b>15,601</b>	<b>17,503</b>
<b>E.E.C.</b>														
Netherlands . . . . .	—	3	—	9	29	55	109	230	—	—	—	—	109	239
Others . . . . .	13	74	8	148	...	1	9	12	—	—	—	—	17	160
<b>Total</b> . . . . .	<b>13</b>	<b>77</b>	<b>8</b>	<b>157</b>	<b>29</b>	<b>56</b>	<b>118</b>	<b>242</b>	<b>—</b>	<b>—</b>	<b>—</b>	<b>—</b>	<b>126</b>	<b>399</b>
<b>OTHER COUNTRIES</b>														
Chile . . . . .	109	15	295	40	4	—	12	—	—	—	—	—	307	40
Iceland . . . . .	1,056	1,481	3,690	5,176	366	62	1,400	212	45	2	194	12	5,284	5,400
Japan . . . . .	—	—	—	—	322	...	1,365	3	401	188	1,700	905	3,065	908
Peru . . . . .	1,280	229	3,404	755	3	—	12	—	—	—	—	—	3,416	755
U.S.S.R. . . . .	—	—	—	—	125	209	406	668	—	—	—	—	406	668
U.S.A. . . . .	...	...	...	...	49	...	184	...	...	...	...	...	184	...
Others . . . . .	...	32	...	99	1	...	1	1	—	...	—	...	1	100
<b>Total</b> . . . . .	<b>2,445</b>	<b>1,757</b>	<b>7,389</b>	<b>6,070</b>	<b>870</b>	<b>271</b>	<b>3,380</b>	<b>884</b>	<b>446</b>	<b>190</b>	<b>1,894</b>	<b>917</b>	<b>12,663</b>	<b>7,871</b>
<b>All Countries Total</b> . . . . .	<b>7,218</b>	<b>6,171</b>	<b>22,572</b>	<b>21,221</b>	<b>3,772</b>	<b>3,577</b>	<b>14,598</b>	<b>12,210</b>	<b>641</b>	<b>340</b>	<b>2,726</b>	<b>1,649</b>	<b>39,896</b>	<b>35,080</b>

Values expressed in c.i.f. terms.

**TABLE 18**

**UNITED KINGDOM**  
**Exports of Fish and Fish Preparations**

Consigned to	WET FISH												All Forms of Shellfish			Total Fish and Fish Preparations								
	Fresh, chilled or frozen			Semi-preserved			Other (inc. in airtight containers)			Total														
	'000 cwt.		£'000	'000 cwt.		£'000	'000 cwt.		£'000	'000 cwt.		£'000	'000 cwt.		£'000	'000 cwt.		£'000						
	1965	1966	1965	1966	1965	1966	1965	1966	1965	1966	1965	1966	1965	1966	1965	1966	1965	1966						
<b>COMMONWEALTH PREFERENCE</b>																								
Australia . . . . .	114	102	1,133	1,159	42	20	434	187	94	95	1,088	1,025	250	217	2,655	2,371	3	250	217	2,656	2,374			
Irish Republic . . . . .	9	12	51	51	30	30	224	198	2	3	27	34	41	45	302	283	1	52	24	46	354	307		
Rep. of S. Africa . . . . .	7	6	74	48	25	24	191	199	15	9	124	83	47	39	389	330	3	4	47	39	392	334		
(inc. S.W. Africa)																								
Others . . . . .	22	24	268	349	49	38	377	314	41	67	389	618	112	129	1,034	1,281	2	33	114	130	1,066	1,314		
<b>Total . . . . .</b>	<b>152</b>	<b>144</b>	<b>1,526</b>	<b>1,607</b>	<b>146</b>	<b>112</b>	<b>1,226</b>	<b>898</b>	<b>152</b>	<b>174</b>	<b>1,628</b>	<b>1,760</b>	<b>450</b>	<b>430</b>	<b>4,380</b>	<b>4,265</b>	<b>4</b>	<b>88</b>	<b>64</b>	<b>454</b>	<b>432</b>	<b>4,468</b>	<b>4,329</b>	
<b>E.F.T.A. Total . . . . .</b>	<b>21</b>	<b>313</b>	<b>115</b>	<b>240</b>	<b>42</b>	<b>38</b>	<b>197</b>	<b>255</b>	<b>5</b>	<b>6</b>	<b>78</b>	<b>95</b>	<b>68</b>	<b>357</b>	<b>390</b>	<b>590</b>	<b>1</b>	<b>2</b>	<b>49</b>	<b>85</b>	<b>69</b>	<b>359</b>	<b>439</b>	<b>675</b>
<b>E.E.C.</b>																								
Belgium . . . . .	24	18	330	295	3	2	39	40	12	2	169	33	39	22	538	368	3	168	166	42	25	706	534	
France . . . . .	25	21	454	407	28	18	200	141	2	1	31	25	55	40	685	573	21	15	429	400	76	55	1,114	973
Western Germany . . . . .	32	223	152	211	25	22	107	100	13	1	190	23	70	246	449	334	2	1	79	51	72	247	528	385
Italy . . . . .	18	15	229	215	35	27	233	173	1	1	5	9	54	43	467	397	3	7	...	...	54	43	474	397
Netherlands . . . . .	69	112	309	250	7	18	31	56	23	12	329	163	99	142	669	469	4	5	183	209	103	147	852	678
<b>Total . . . . .</b>	<b>168</b>	<b>389</b>	<b>1,474</b>	<b>1,378</b>	<b>98</b>	<b>87</b>	<b>610</b>	<b>510</b>	<b>51</b>	<b>17</b>	<b>724</b>	<b>253</b>	<b>317</b>	<b>493</b>	<b>2,808</b>	<b>2,141</b>	<b>30</b>	<b>24</b>	<b>866</b>	<b>826</b>	<b>347</b>	<b>517</b>	<b>3,674</b>	<b>2,967</b>
<b>OTHER COUNTRIES</b>																								
U.S.A. . . . .	8	28	135	348	14	17	102	134	24	13	244	122	46	58	481	604	...	6	17	46	58	487	621	
U.S.S.R. . . . .	59	57	389	453	...	...	...	...	...	...	2	...	59	57	391	453	...	...	...	...	59	57	391	453
Others . . . . .	22	45	158	238	52	43	411	445	8	7	87	80	82	95	656	763	3	4	40	78	85	99	696	841
<b>Total . . . . .</b>	<b>89</b>	<b>130</b>	<b>682</b>	<b>1,039</b>	<b>66</b>	<b>60</b>	<b>513</b>	<b>579</b>	<b>32</b>	<b>20</b>	<b>333</b>	<b>202</b>	<b>187</b>	<b>210</b>	<b>1,528</b>	<b>1,820</b>	<b>3</b>	<b>4</b>	<b>46</b>	<b>95</b>	<b>190</b>	<b>214</b>	<b>1,574</b>	<b>1,915</b>
<b>All Countries Total . . . . .</b>	<b>430</b>	<b>976</b>	<b>3,797</b>	<b>4,264</b>	<b>352</b>	<b>297</b>	<b>2,546</b>	<b>2,242</b>	<b>240</b>	<b>217</b>	<b>2,763</b>	<b>2,310</b>	<b>1,022</b>	<b>1,490</b>	<b>9,106</b>	<b>8,816</b>	<b>38</b>	<b>32</b>	<b>1,049</b>	<b>1,070</b>	<b>1,060</b>	<b>1,522</b>	<b>10,155</b>	<b>9,886</b>

Values expressed in f.o.b. terms.

TABLE 19

**UNITED KINGDOM**  
**Exports of Fish and Marine Mammal Products**

Consigned to	Fish and Marine Mammal Oils				Fish and Meat Meals				Total	
	'000 cwt.		£'000		'000 cwt.		£'000		£'000	
	1965	1966	1965	1966	1965	1966	1965	1966	1965	1966
<b>COMMON-WEALTH PREFERENCE</b>										
Australia . . . . .	6	5	42	26	...	...	...	1	42	27
Irish Republic . . . .	4	2	30	16	4	3	10	9	40	25
Rep. of S. Africa . . .	1	1	5	7	...	...	...	...	5	7
(inc. S.W. Africa)										
Others . . . . .	24	14	198	115	39	35	111	91	309	206
<b>Total . . . . .</b>	<b>35</b>	<b>22</b>	<b>275</b>	<b>164</b>	<b>43</b>	<b>38</b>	<b>121</b>	<b>101</b>	<b>396</b>	<b>265</b>
<b>E.F.T.A.</b>										
Finland . . . . .	...	...	5	2	1	15	2	67	7	69
Norway . . . . .	...	...	1	...	29	22	97	77	98	77
Sweden . . . . .	...	1	6	6	31	28	74	76	80	82
Switzerland . . . . .	5	10	81	66	—	1	—	3	81	69
Others . . . . .	3	1	9	10	...	...	5	...	14	10
<b>Total . . . . .</b>	<b>8</b>	<b>12</b>	<b>102</b>	<b>84</b>	<b>61</b>	<b>66</b>	<b>178</b>	<b>223</b>	<b>280</b>	<b>307</b>
<b>E.E.C.</b>										
Belgium . . . . .	2	1	11	5	3	...	2	...	13	5
France . . . . .	2	2	9	8	1	...	3	...	12	8
Western Germany . . .	3	3	15	15	20	...	32	2	47	17
Italy . . . . .	4	11	30	53	...	...	...	...	30	53
Netherlands . . . . .	1	2	8	10	2	21	6	25	14	35
<b>Total . . . . .</b>	<b>12</b>	<b>19</b>	<b>73</b>	<b>91</b>	<b>26</b>	<b>21</b>	<b>43</b>	<b>27</b>	<b>116</b>	<b>118</b>
<b>OTHER COUNTRIES</b>										
U.S.A. . . . .	24	32	99	128	2	2	7	12	106	140
U.S.S.R. . . . .	—	—	—	—	—	—	—	—	—	—
Others . . . . .	9	16	79	113	27	19	61	42	140	155
<b>Total . . . . .</b>	<b>33</b>	<b>48</b>	<b>178</b>	<b>241</b>	<b>29</b>	<b>21</b>	<b>68</b>	<b>54</b>	<b>246</b>	<b>295</b>
<b>All Countries Total.</b>	<b>88</b>	<b>101</b>	<b>628</b>	<b>580</b>	<b>159</b>	<b>146</b>	<b>410</b>	<b>405</b>	<b>1,038</b>	<b>985</b>

Values expressed in f.o.b. terms.



© *Crown copyright 1967*

Published by  
**HER MAJESTY'S STATIONERY OFFICE**

To be purchased from  
49 High Holborn, London W.C.1  
423 Oxford Street, London W.1  
13A Castle Street, Edinburgh 2  
109 St. Mary Street, Cardiff  
Brazenose Street, Manchester 2  
50 Fairfax Street, Bristol 1  
35 Smallbrook, Ringway, Birmingham 5  
7-11 Linenhall Street, Belfast 1  
or through any bookseller

*Printed in England*