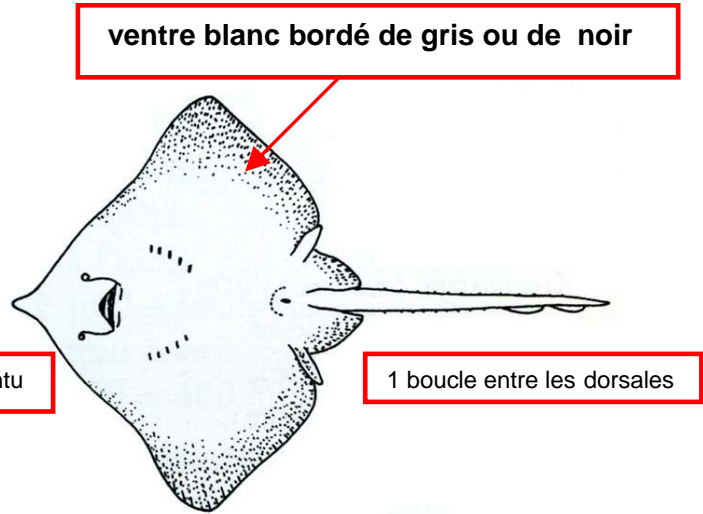


LES RAIES (1)

Raja alba (raie blanche)



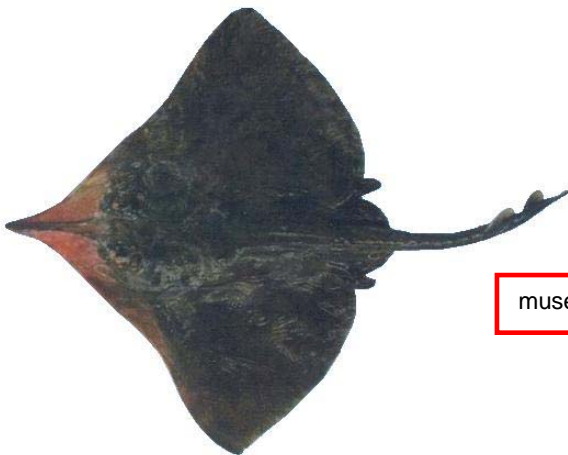
museau long et pointu



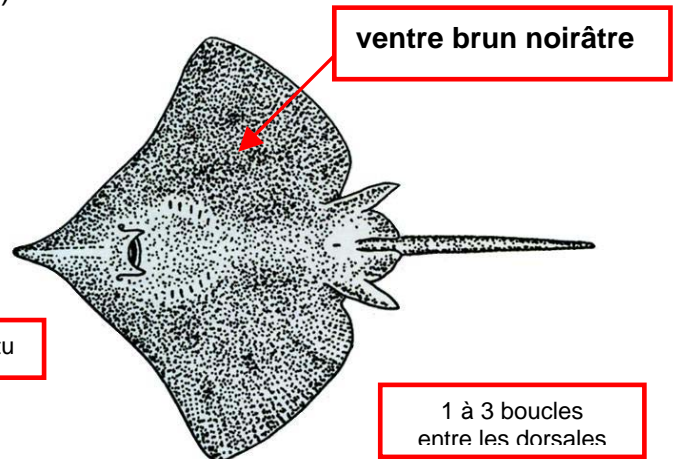
ventre blanc bordé de gris ou de noir

1 boucle entre les dorsales

Dipturus nidarosiensis (pocheteau de Norvège)



museau long et pointu



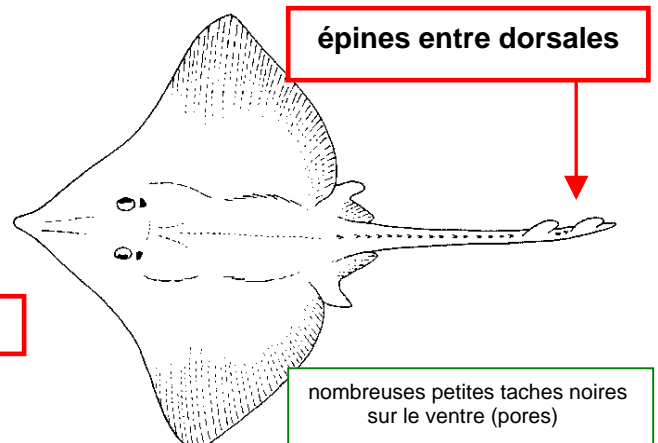
ventre brun noirâtre

1 à 3 boucles
entre les dorsales

Raja batis (pocheteau gris) RAJA BAI



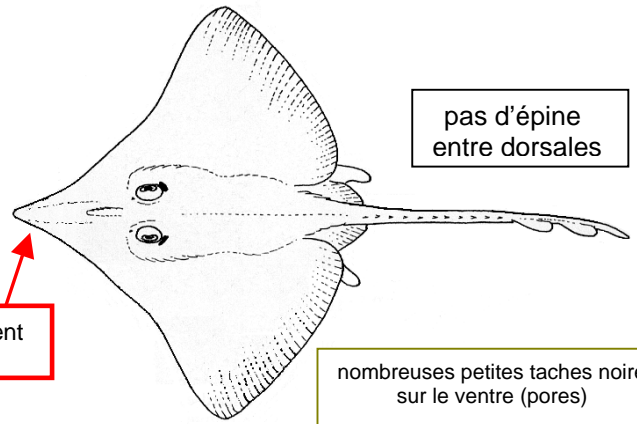
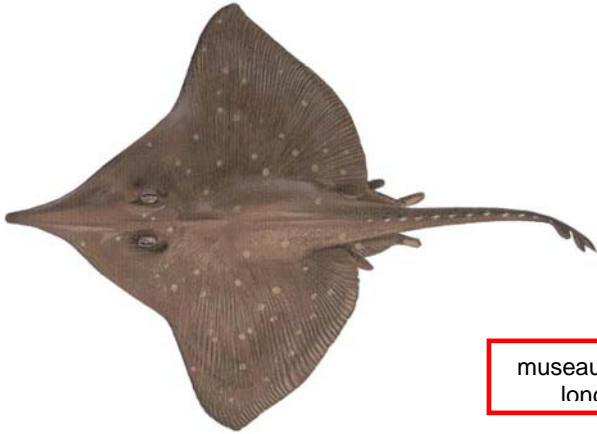
museau long et pointu



épines entre dorsales

nombreuses petites taches noires
sur le ventre (pores)

Raja oxyrinchus (pocheteau noir) RAJA OXY

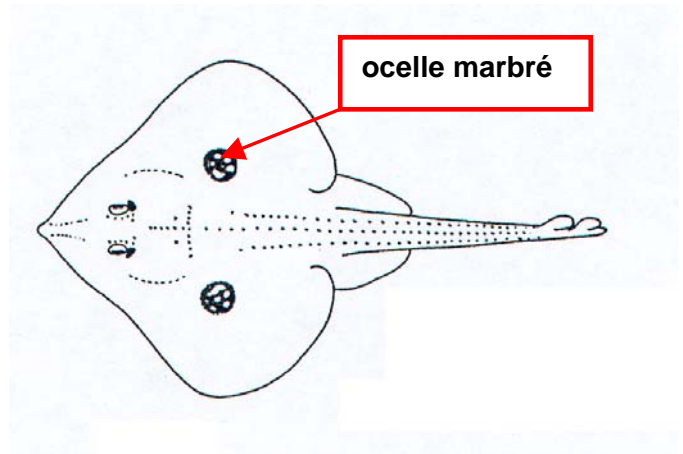
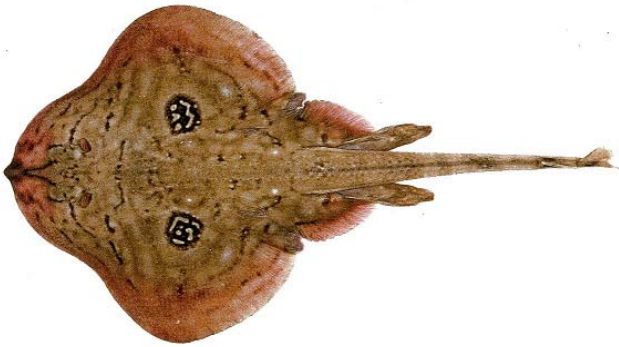


museau extrêmement long et pointu

pas d'épine entre dorsales

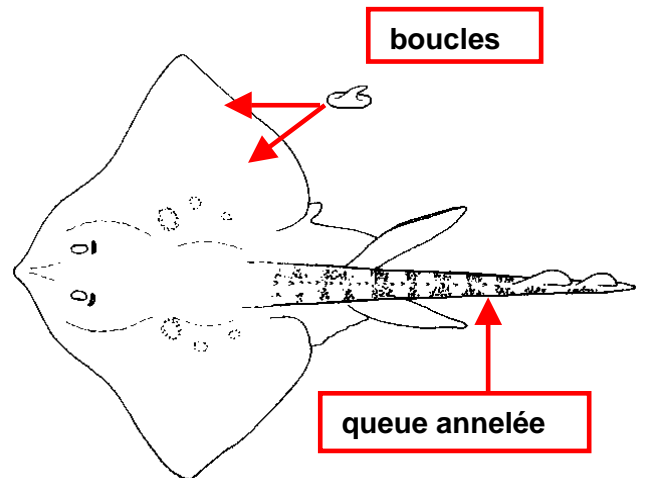
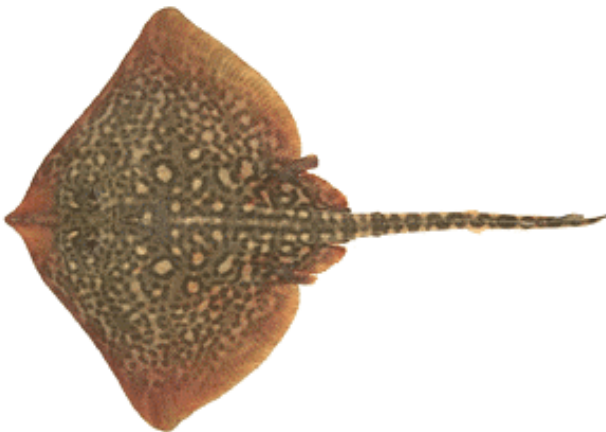
nombreuses petites taches noires sur le ventre (pores)

Raja naevus (raie fleurie) RAJA NAE



ocelle marbré

Raja clavata (raie bouclée) RAJA CLA

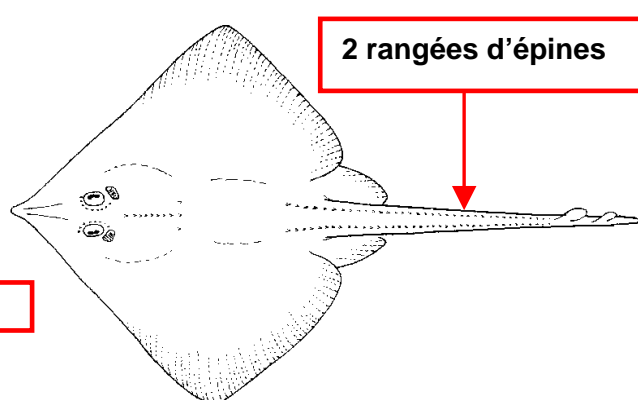
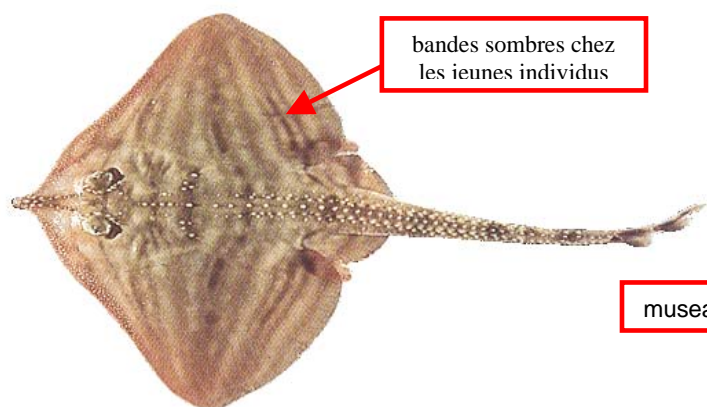


boucles

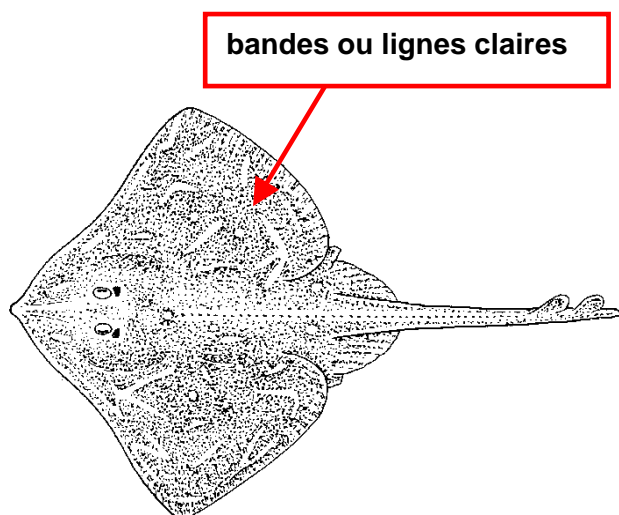
queue annelée

LES RAIES (2)

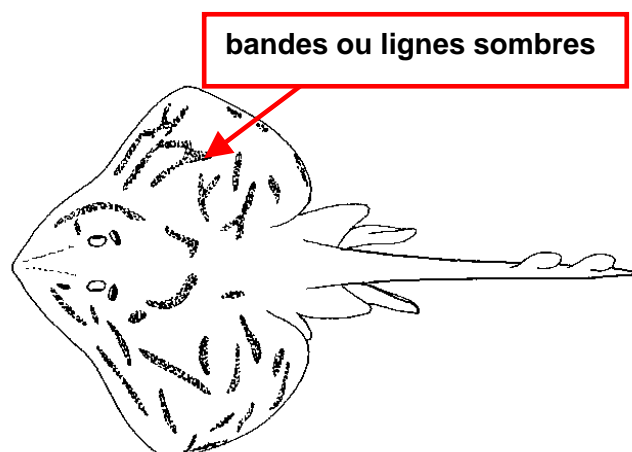
Raja fullonica (raie chardon) RAJA FUL



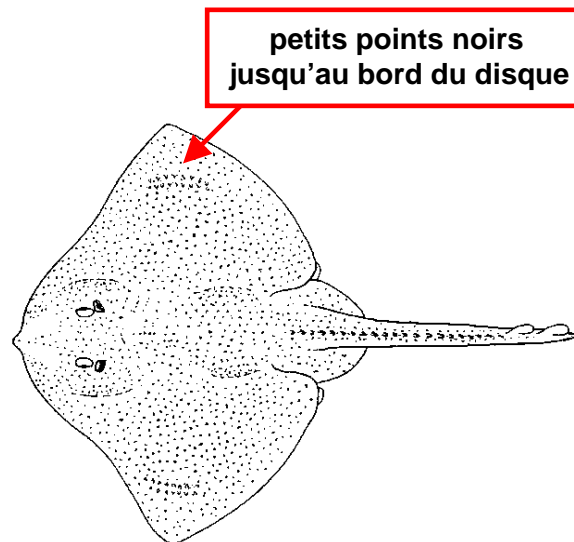
Raja microcellata (raie mée) RAJA MIC



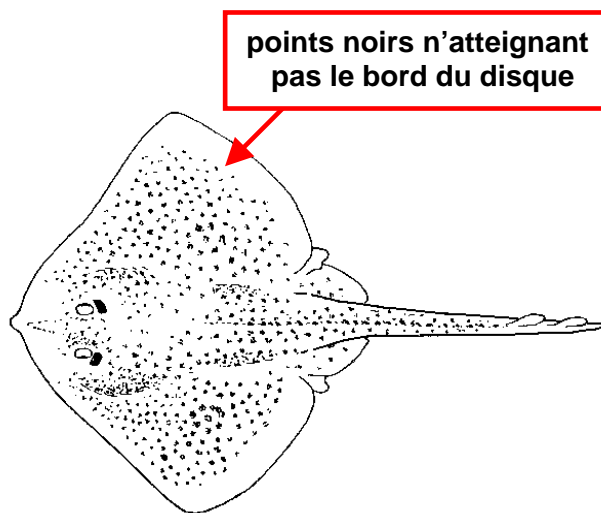
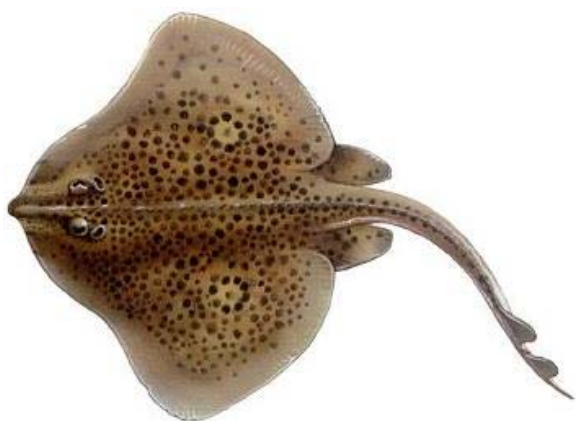
Raja undulata (raie brunette) RAJA UND



Raja brachyura (raie lisse) RAJA BRA



Raja montagui (raie douce) RAJA MON



Raja circularis (raie circulaire) RAJA CIR

