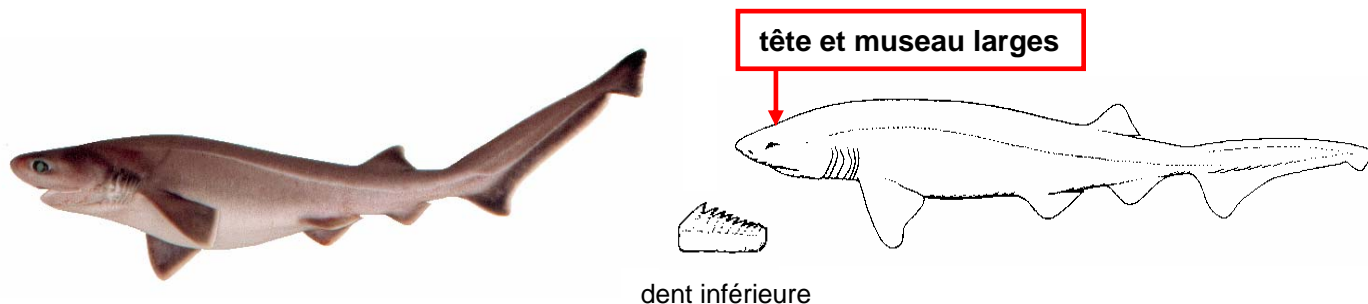


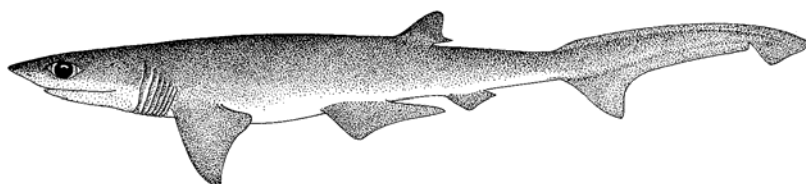
# LES REQUINS (1)

***Hexanchus griseus*** (requin gris) HEXA GRI

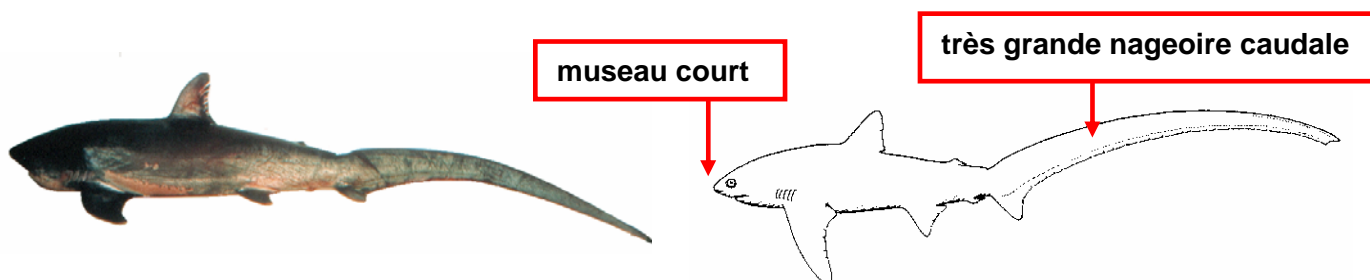


***Heptranchias perlo*** (requin perlon) HEPT PER

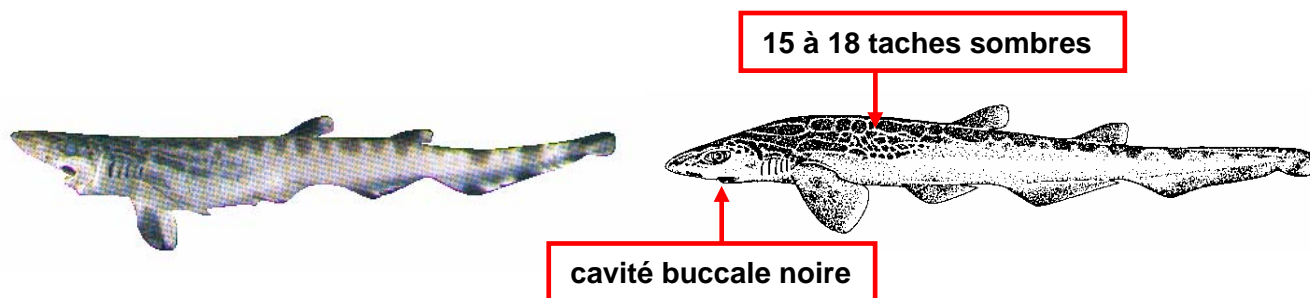
7 paires de fentes branchiales



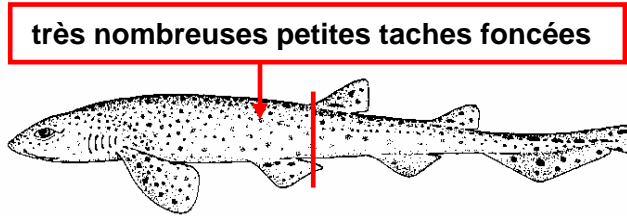
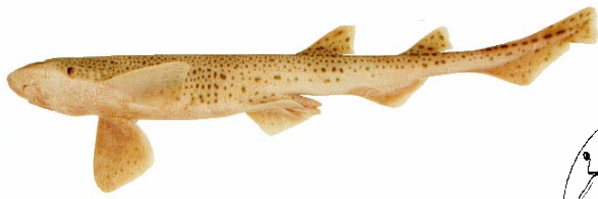
***Alopias vulpinus*** (requin renard) ALOP VUL



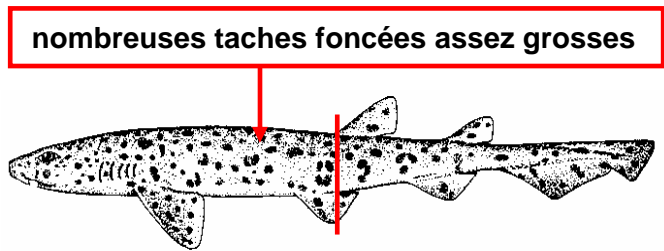
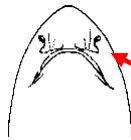
***Galeus melastomus*** (chien espagnol) GALE MEL



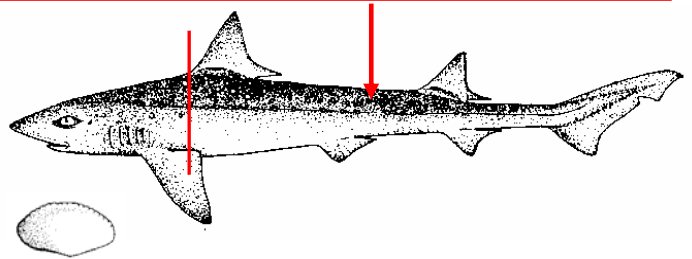
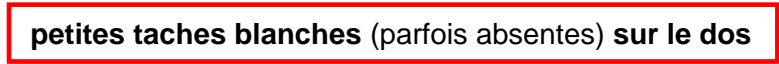
**Scyliorhinus canicula** (petite roussette) SCYL CAN



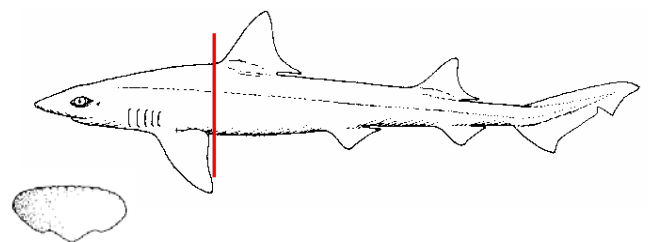
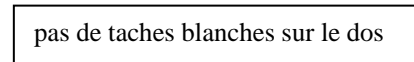
**Scyliorhinus stellaris** (grande roussette) SCYL STE



**Mustelus asterias** (émissole tachetée) MUST AST

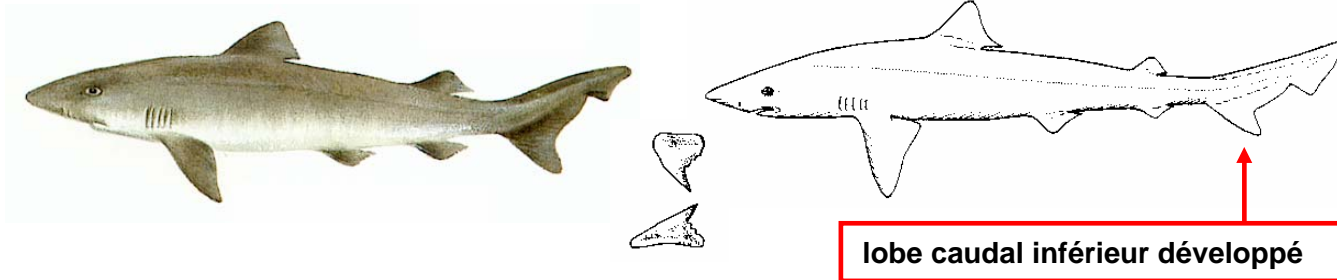


**Mustelus mustelus** (émissole lisse) MUST MUS

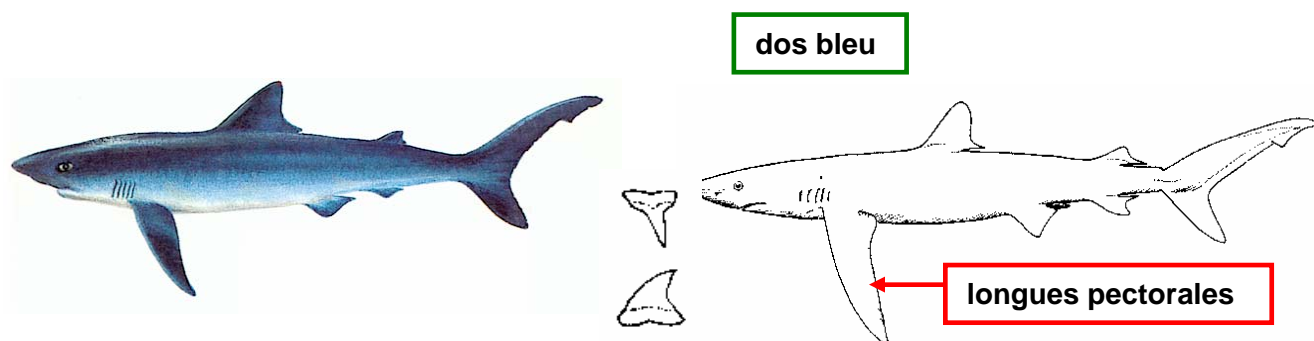


## LES REQUINS (2)

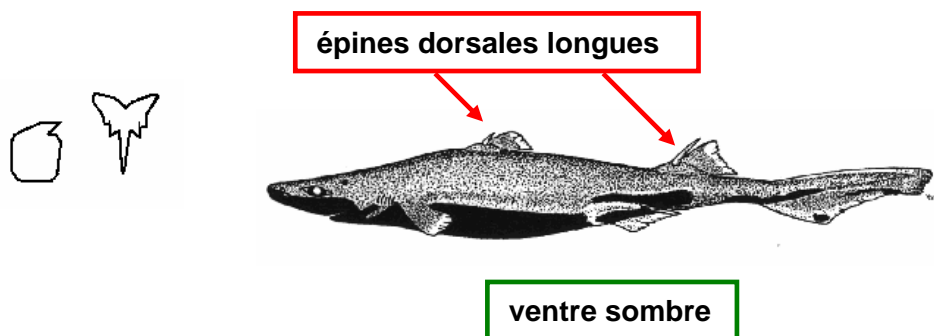
*Galeorhinus galeus* (requin hâ) GALE GAL



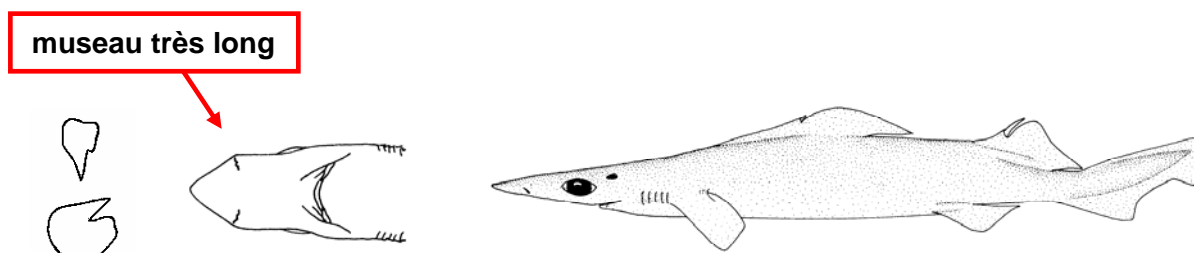
*Prionace glauca* (peau bleue) PRIO GLA



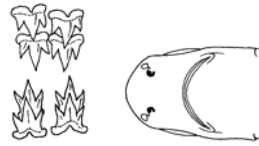
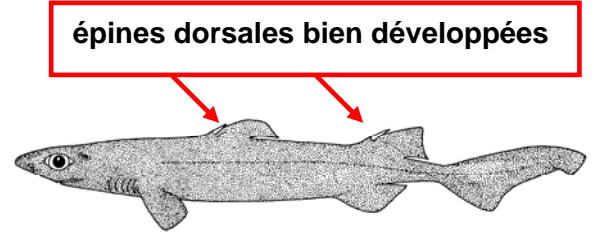
*Etmopterus spinax* (sagre commun) ETMO SPI



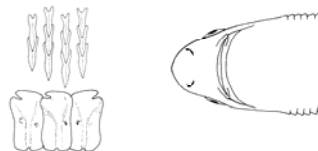
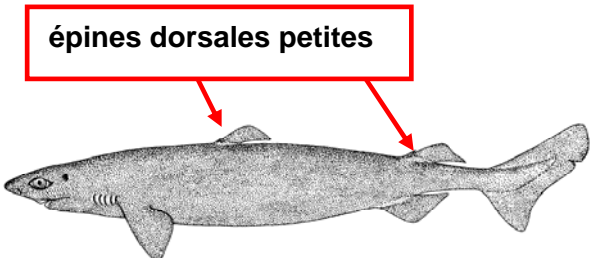
*Deania calcea* (squale-savate commun) DEAN CAL



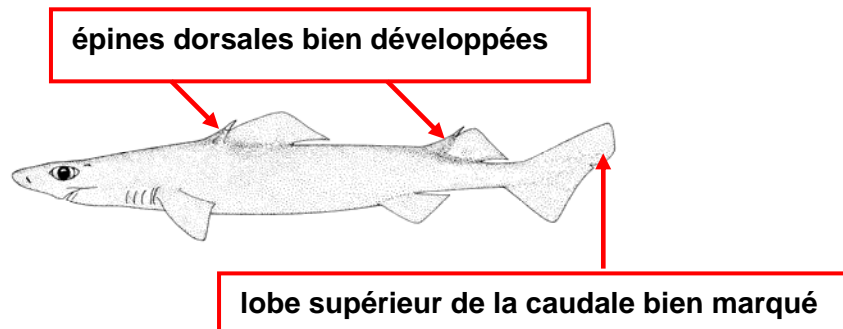
***Centroscyllium fabricii*** (aiguillé noir) CENT FAB



***Centroscygnus coelolepis*** (pailona commun) CENT COE



***Centrophorus squamosus*** (squale-chagrin de l'Atlantique)



***Squalus acanthias*** (aiguillat commun) SQUA ACA

