

---

**CHAPTER II**

**MITOCHONDRIAL DNA VARIATION AND CRYPTIC  
SPECIATION WITHIN THE FREE - LIVING MARINE NEMATODE**

*PELLIODITIS MARINA*

---

Published as:

Derycke S, Remerie T, Vierstraete A, Backeljau T, Vanfleteren J, Vincx M, Moens T (2005) Mitochondrial DNA variation and cryptic speciation within the free-living marine nematode *Pellioditis marina*. **Mar Ecol Progr Ser** 300: 91-103.

### ABSTRACT

An inverse correlation between dispersal ability and genetic differentiation among populations of a species is frequently observed in the marine environment. We investigated the population genetic structure of the free-living marine nematode *Pellioiditis marina*. 426 bp of the mitochondrial COI gene was surveyed on a geographical scale of approximately 100 km during spring 2003. Nematodes were collected in two coastal locations in Belgium, and in two estuaries and a saltwater lake (Lake Grevelingen) in The Netherlands. Molecular variation was assessed with the Single – Strand Conformation Polymorphism (SSCP) method.

In total, 32 haplotypes were observed, and sequence divergence among 452 individuals ranged from 0.2 – 10.6 %. Four distinct mitochondrial lineages were discovered, with low divergences within the lineages (0.2 – 1.6 %) and high divergences between the lineages (5.1 – 10.6 %). The nuclear ribosomal ITS-region showed concordant phylogenetic patterns, suggesting that nematode species diversity may be considerably underestimated.

AMOVA indicated a strong genetic differentiation among populations. The Lake Grevelingen population was clearly differentiated from all other populations, but genetic structuring was also significant within the Westerschelde and was correlated with gradients in salinity and pollution. The observed population genetic structure is in accordance with the limited active dispersal capacity of *P. marina*, but is at variance with its significant potential for passive dispersal. We therefore suggest that autecological characteristics, including short generation time, high colonisation potential and local adaptation may be at the basis of this nematode's population genetic structure.

## INTRODUCTION

Many marine populations are thought to be demographically open because of long-distance larval dispersal (Caley et al. 1996). During the last decade, however, unexpectedly high levels of genetic differentiation have been reported for marine organisms with supposedly high dispersal capabilities (e.g. Taylor & Hellberg 2003, Caudill & Bucklin 2004, Ovenden et al. 2004), illustrating that straightforward predictions on the relationship between dispersal ability and genetic differentiation remain problematic. Fewer studies have focused on species with low(er) dispersal abilities (Schizas 1999, 2002, Kirkendale & Meyer 2004), where population genetic structuring is expected to be higher (Avice et al. 1987, Palumbi 1994). Factors influencing gene flow in marine species are roughly divided into physical (e.g. ocean currents, habitat characteristics) and biological (e.g. life-history, predation, larval and adult behaviour) categories (Hohenlohe 2004). These characteristics limit the dispersal abilities of planktonic larvae, and render marine environments less open than previously thought. Furthermore, the issue of spatial scale may further complicate the discussion about open vs closed marine populations (Cowen et al. 2000, Camus & Lima 2002).

In addition, population genetic surveys have also revealed that many marine 'species' are in fact species complexes involving morphologically cryptic taxa (Knowlton 1993, Todaro et al. 1996, Matthews et al. 2002, Bond & Sierwald 2002, McGovern & Hellberg 2003). Such complexes are especially prominent in small invertebrates with few taxonomically diagnostic characters (Rocha – Olivares et al. 2001). This taxonomic confusion evidently complicates the interpretation of distribution and dispersal patterns in the marine environment (Kirkendale & Meyer 2004).

In this study, we investigate the population genetic structure of the free-living marine nematode *Pellioditis marina* Andrassy 1983 (syn. *Rhabditis marina* Bastian (1865))<sup>11</sup> over a fairly small geographic area. Nematodes are the most abundant metazoans on earth, and they are highly speciose at very small (< m<sup>2</sup>) to global scales, with estimates of total species numbers (including zoo- and phytoparasitic species) ranging from 10<sup>5</sup> (Coomans 2000) up to 10<sup>8</sup> (Lamshead 1993). Their omnipresence

---

<sup>11</sup> But see General introduction, p 9. *Pellioditis* is at present considered to be a subgenus of *Rhabditis*

and high diversity combined with functional variability render them an interesting model group to test concepts about the link between structural and functional biodiversity (Coomans 2002, De Mesel et al. 2003).

Most marine nematodes are endobenthic organisms with very limited active dispersal capacities. Passive (through erosion) and active (Wetzel *et al.* 2002) emergence into the water column do, however, occur, and passive dispersal through water currents, waterfowl or ballast water is plausible but hitherto poorly studied. *Pellioiditis marina* typically frequents standing and decomposing macroalgae in the littoral zone of coastal environments (Moens & Vincx 2000b) and may therefore be more prone to passive resuspension and transport (e.g. through “rafting”) than typically endobenthic nematodes. Its high reproductive capacity (up to 600 eggs per female under optimal conditions (Vranken & Heip 1983)) and short generation time (less than three days under optimal conditions (Vranken & Heip 1983, Moens & Vincx 2000a)) render this species a strong colonizer capable of establishing viable populations from one or a few gravid females. In view of these features, we expected some capacity for passive dispersal and gene flow, at least over limited geographical distances.

Several marine nematode species have wide to nearly cosmopolitan distributions. This also holds for *Pellioiditis marina*, which has been reported from coastal environments in Europe, along the Mediterranean Sea, on both sides of the Atlantic Ocean (Inglis & Coles 1961), Vancouver Island (Canada) (Sudhaus & Nirmrich 1989), New Zealand, North Africa, Australia, South America (Sudhaus 1974), and from both the Antarctic and Arctic archipelago (Moens unpublished). Such a wide geographical distribution is at variance with the alleged limited dispersal capacities of nematodes. However, *P. marina* shows substantial morphological (Inglis & Coles 1961, Sudhaus 1974), reproductive (oviparous vs ovoviviparous) and physiological variation. As an example, some populations thrive well at temperatures which are lethal to other populations (Moens & Vincx 2000a). While this in part may reflect local adaptation and phenotypic plasticity, it may also relate to differentiation among cryptic taxa as a result of vicariance events. Hence, since marine nematode taxonomy heavily relies on morphological criteria, there is an urgent need for information on the population genetic structure and cryptic variation within such morphologically defined species in order to better understand their current distribution and dispersal patterns.

Against this background, we used Single Strand Conformation Polymorphisms (SSCP) (Orita et al. 1989, Sunnucks et al. 2000) and DNA sequencing to screen mitochondrial COI nucleotide sequence variation of *P. marina* on a small and largely continuous geographical scale (ca. 100 km) along the Belgian coast and in the Scheldt Estuary (The Netherlands). This area comprises various suitable habitat types for *P. marina*, as well as several locations with different degrees of connectivity. This sampling design enabled us to test the influence of (1) different habitats (estuaries, lake and coast), (2) environmental gradients (salinity, pollution) and (3) geographic distance on the population genetic structure of a free-living nematode.

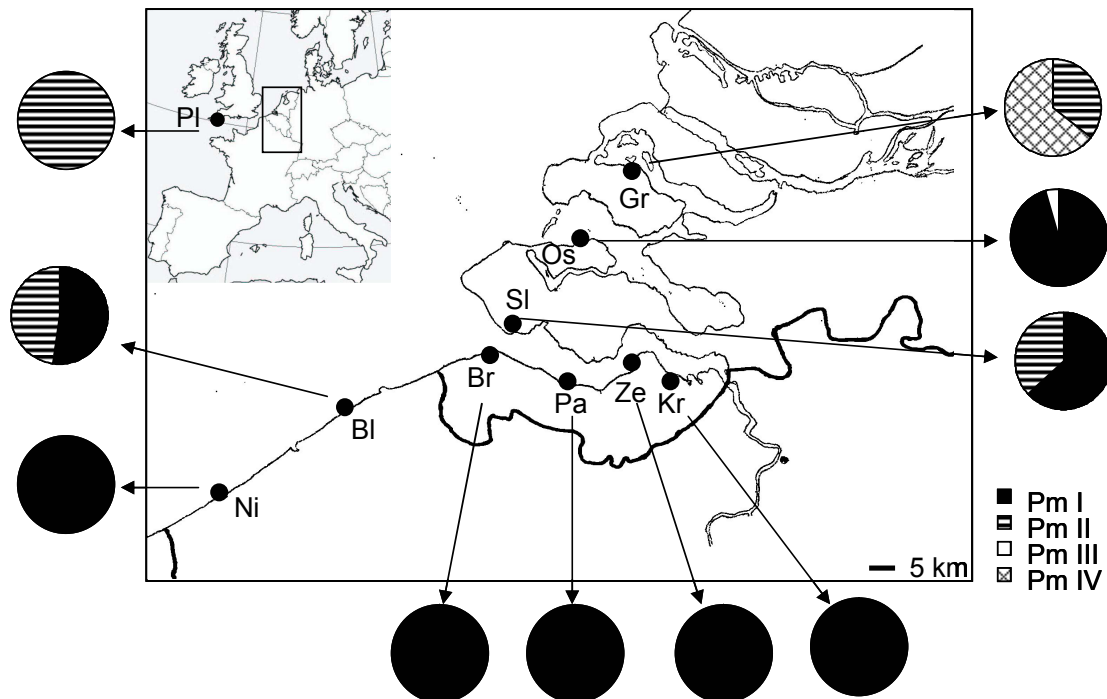
## MATERIAL AND METHODS

### SAMPLE LOCATIONS

Individuals of *Pellioiditis marina* were collected from 10 locations in Belgium, The Netherlands and England during April-June 2003 (Fig. 2.1). In Belgium, two coastal locations were sampled (Nieuwpoort: Ni; Blankenberge: Bl), representing true marine habitats with a coarse sandy sediment and direct impact of the sea. In The Netherlands, seven localities were sampled in two arms of the Scheldt Estuary (Westerschelde, Oosterschelde: Os) and in Lake Grevelingen (Gr). The Westerschelde is highly polluted, as it is a major drain for industrial and domestic wastes (De Wolf et al. 2004). Salinity varies between 12 and 35 in the upperpart of the estuary comprising our sample locations. The Oosterschelde estuary is relatively clean and shows little to no variation in salinity (33-35 psu). Lake Grevelingen also has a fairly constant salinity (32 psu) but differs from the Oosterschelde by being cut off from the sea and the lack of tidal currents. Yet, both Lake Grevelingen and the Oosterschelde were transformed into their current basin like shape by man during the 60-70's. Both environments are thus very young. Finally, in England one population was sampled in Plymouth, in the mouth of the River Plym (salinity of 32), in order to compare our small-scale patterns with larger-scale differentiation.

The following entities can thus be identified in our sampling design: (1) locations with no apparent physical barrier between them (two Belgian coastal stations and five locations within the Westerschelde); (2) two nearby but recently isolated locations by both natural and man-made barriers (Oosterschelde and Lake

Grevelingen); (3) locations within the Westerschelde (40 km) along a salinity and pollution gradient and (4) samples from the more distant location of Plymouth (southwest England) under influence of Atlantic currents.



**Fig. 2.1.** Location of the sampled populations and distribution of the four lineages PmI, PmII, PmIII and PmIV. (Ni = Nieuwpoort (51° 9' N, 2° 43' E); Bl = Blankenberge (51° 19' N, 3° 8' E); Br = Breskens (51° 24' N, 3° 33' E); Pa = Paulina (51° 21' N, 3° 49' E); Ze = Zeedorp (51° 24' N, 3° 58' E); Kr = Kruispolderhaven (51° 22' N, 4° 3' E); Sl = Sloehaven (51° 27' N, 3° 36' E); Os = Oosterschelde Estuary (51° 36' N, 3° 50' E); Gr = Grevelingen lake (51° 44' N, 3° 57' E); Pl = Plymouth (50° 22' N, 4° 9' E).

#### SAMPLE COLLECTION AND PROCESSING

Approximately 50 individuals from each location were processed, except from Plymouth, where only 31 individuals were analysed. Fragments of *Fucus* sp. (*Ulva* sp. and *Sargassum* sp. in Lake Grevelingen) were randomly collected and incubated on agar slants (Moens & Vincx 1998). Nematodes were subsequently allowed to colonize the agar for about two days, which is less than one generation time under the incubation conditions used here (Moens & Vincx 2000a). *Pellioiditis marina* was then identified under a dissecting scope using diagnostic morphological characters (Inglis & Coles 1961) and handpicked from the agar with a fine needle. All individuals were transferred through sterile water and photographed digitally as a morphological reference. All worms were stored individually in 70 – 95 % acetone until processed.

Two individuals of the congener *Pellioiditis ehrenbaumi* (syn. *Rhabditis nidrosiensis* (Sudhaus 1974), where *Rhabditis* and *Pellioiditis* are subgenera of the genus *Rhabditis* (Sudhaus & Fitch 2001)) from stranded macroalgae in the Oosterschelde were also isolated and preserved on acetone.

#### DNA EXTRACTION AND PCR AMPLIFICATION

Prior to DNA extraction, the nematodes were transferred into sterile distilled water for approximately 30 min to remove traces of acetone. Individual nematodes were then transferred to 20 µl Lysis Buffer (50 mM KCl, 10 mM Tris pH 8.3, 2.5 mM MgCl<sub>2</sub>, 0.45 % NP40, 0.45 % Tween20), cut in pieces with a razor and frozen for 10 min at -20 °C. Proteinase K (60 µg ml<sup>-1</sup>) was added and samples were incubated 1 h at 65 °C, followed by 10 min at 95 °C. Finally, the DNA-samples were centrifuged for 1 min at maximum speed (13200 rpm). One µl of extracted DNA was used as template for polymerase chain reactions (PCR)<sup>12</sup>.

A portion of the mitochondrial cytochrome oxidase c subunit 1 (COI) gene was amplified with primers JB3 (5'-TTTTTTGGGCATCCTGAGGTTTAT-3') and JB4.5 (5'- TAAAGAAAGAACATAATGAAAATG-3') (Hu et al. 2002). Standard PCR- amplifications were conducted in 25 µl volumes for 35 cycles, each consisting of a 30 s denaturation at 94 °C, 30 s annealing at 54 °C, and 30 s extension at 72 °C, with an initial denaturation step of 5 min at 94 °C and a final extension step of 5 min at 72 °C. Because DNA amplification of nematodes from lake Grevelingen consistently failed with these primers, we constructed a new reverse primer (JB5; 5'- AGCACCTAAACTTAAAACATAATGAAAATG-3') based on rhabditid nematode sequences from GenBank. Five µl of each PCR-product was loaded on a 1 % agarose gel to check the size of the amplified product.

We additionally analysed the nuclear ribosomal internal transcribed spacer region (ITS) of several mitochondrial haplotypes. The primers from Vrain et al. (1992) were modified: VRAIN 2F (5'-CTTTGTACACACCGCCCGTCGCT-3') and VRAIN 2R (5'- TTTCACCTCGCCGTTACTAAGGGAATC-3'); these primers anneal in the conserved 28S and 18S region of the ribosomal DNA and amplify a product of approximately 900 bp (ITS-1, 5.8S and ITS-2). PCR-conditions were similar to those

---

<sup>12</sup> The remaining amount of DNA was stored at -80°C. In this way, the same DNA-samples could be used for the amplification of multiple markers.

for amplification of the COI fragment, except for the final extension step, which lasted 10 min instead of 5.

### *SINGLE STRAND CONFORMATION POLYMORPHISMS (SSCP)*

For SSCP-analysis, 2.5  $\mu\text{l}$  of PCR-product was mixed with 5.5  $\mu\text{l}$  loading dye (5 % EDTA, 95 % formamide, 0.05 % bromophenol blue), denatured for 5 min at 95 °C and put immediately on ice until loading on a non-denaturing polyacrylamide gel (0.5 mm thick, 2 % crosslinking and 5 % glycerol). For these horizontal gels, electrode strips were made with Tris/Hac (0.45 M) and Tris/Tricine (0.8 M) buffers. The conditions for electrophoresis (15 W, 4 h at 5 °C) were standardized for optimal resolution of bands, allowing the detection of single base differences for the 426 bp COI fragment. SSCP has a capacity to detect 75 – 95 % of the point mutations using fragments of 200 bp or less (Zhu & Gasser 1998), although the same authors showed that sequence heterogeneity can also be displayed in fragments of 440-550 bp. A single point mutation in a 530 bp fragment of the ITS-2 sequence of *Toxocara cati* was also detected by this method (Zhu et al. 1998). After electrophoresis, haplotypes were visualized with a DNA silver staining kit (Amersham Biosciences) and scored by their relative mobility.

### *DNA SEQUENCING*

All samples with different SSCP patterns were sequenced with both the forward and reverse primers as described above. To ensure that band mobilities were consistent with actual sequence variability, we additionally sequenced 10 % of the samples from every location. Our SSCP conditions proved capable of distinguishing all haplotypes, except for one very rare haplotype ( $n = 2$ , in Sloehaven (SI)) which was omitted from the dataset. Ribosomal ITS fragments were not analysed with SSCP but sequenced directly.

Sequencing was performed using a Perkin Elmer ABI Prism 377 automated DNA sequencer. The PCR product was purified with shrimp alkaline phosphatase (1 U  $\mu\text{l}^{-1}$ , Amersham E70092Y) and exonuclease I (20 U  $\mu\text{l}^{-1}$ , Epicentre Technologies X40505K) and cycle-sequenced using the ABI Prism BigDye V 2.0 Terminator Cycle Sequencing kit.



*DATA ANALYSIS*Genetic diversity

Standard measures of genetic variation within populations, such as nucleotide diversity ( $\pi$ ) (Nei 1987) and gene diversity ( $h$ ) (Tajima 1983, Nei 1987) were calculated using ARLEQUIN v.2.0. (Schneider et al. 2000). Sequences were aligned with ClustalV 1.64b (Higgins 1991) and were trimmed for further phylogenetic analysis in PAUP\* 4.0 beta 10 (Swofford 1998). MODELTEST 3.06 (Posada & Crandall 1998) was used to determine that GTR+I+G model was the most suitable for maximum likelihood analyses of our mitochondrial and nuclear data. The corresponding sequences of the closely related, marine/estuarine species *Pellioditis ehrenbaumi* were used for outgroup comparison (Accession number AJ867056 for COI and AJ867073 for ITS). Maximum parsimony (MP) and neighbour joining (NJ) trees were inferred with 1000 bootstrap replicates and 10000 rearrangements, while Maximum Likelihood (ML) trees inferred from 100 bootstrap replicates and 500 rearrangements. Trees were obtained via stepwise addition and a tree-bisection-reconnection branch swapping algorithm was used. Sequences were added randomly in 10 replicate trials, with one tree held at each step. To explore the intraspecific relationships between the observed haplotypes, a minimum spanning network was constructed with ARLEQUIN v.2.0. and drawn by hand in Microsoft PowerPoint. Ambiguities in the network were resolved following the criteria suggested by Crandall & Templeton (1993).

Population genetic structure

The genetic structure of *Pellioditis marina* was analysed with ARLEQUIN's AMOVA (Analysis of MOlecular VAriance). This procedure calculates the molecular variance and  $\phi$ -statistics among and within populations, and the significance of the variance components is tested by permuting haplotypes among populations (Excoffier et al. 1992). AMOVA was performed for all sequences combined and, where possible, for every clade separately.

Genetic distances, which are a measure for the variability within versus between populations, between different populations were also calculated in ARLEQUIN, using the Tamura and Nei correction for different transversion and

transition rates. This model also distinguishes between different transition rates among purines and pyrimidines (Tamura & Nei 1993). Table-wide significance levels of the p-values obtained with 10000 permutations were corrected for multiple tests according to the sequential Bonferonni method (Rice 1989). To visualize the genetic distances between the different populations, a multidimensional scaling (MDS) plot was drawn using the program Primer 5.2.9 (Clarke & Gorley 2001).

To test the isolation-by-distance model (IBD, Slatkin 1993), geographic and genetic distances were compared using a Manteltest as implemented in ARLEQUIN. The geographic distance between populations was measured as the shortest continuous water surface distance. The number of permutations was set to 1000. The strength of the IBD relationship was determined with reduced major axis (RMA) regression as implemented in the program IBD 1.5 (Bohonak 2002).

## RESULTS

### INTRASPECIFIC VARIATION OF COI

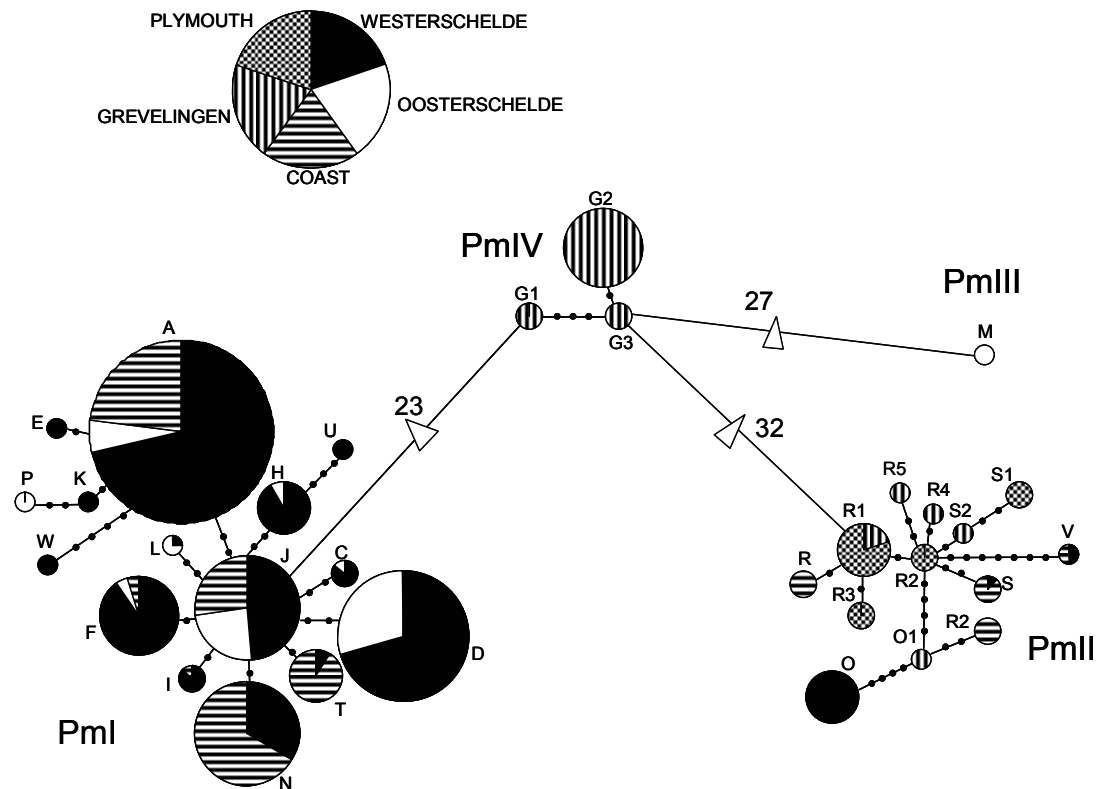
In total, 452 individuals of *Pellioditis marina* were analysed for sequence variation in a 426 bp amplicon of the mitochondrial COI gene, yielding 32 haplotypes (Table 2.1). No insertions or deletions occurred within the trimmed fragment (393 bp long), and a total of 73 variable sites (18.58 %) were observed (Appendix 2.1), 51 of which were parsimony informative, involving 44 synonymous substitutions and seven replacement sites. Pairwise divergences between the COI sequences ranged from 0.23 % (1 base substitutions) to 9.6 % (41 substitutions), most of them being third-base transversions. All sequences are available in GenBank under Accession numbers AJ867447 – AJ867478.

	A	C	D	E	F	H	I	J	K	L	M	N	O	P	R	S	T	U	V	W	G1	G2	G3	R1	R2	R3	R4	R5	O1	O2	S1	S2	n	h	$\pi$	
Br	17	-	16	-	8	5	-	1	-	-	-	2	-	-	-	-	-	-	-	-	-	-	-	-	-	-	-	-	-	-	-	-	-	49	0.7491	0.0072
Pa	15	-	13	3	1	2	3	1	-	-	-	8	-	-	-	-	3	-	-	-	-	-	-	-	-	-	-	-	-	-	-	-	-	49	0.8121	0.0086
Ze	16	4	17	-	1	3	4	2	2	-	-	-	-	-	-	-	-	-	-	-	-	-	-	-	-	-	-	-	-	-	-	-	-	49	0.7679	0.0075
Kr	33	-	1	-	9	-	-	-	-	-	-	1	-	-	-	-	-	-	-	-	-	-	-	-	-	-	-	-	-	-	-	-	-	44	0.4038	0.0034
Sl	6	2	5	-	1	-	12	-	1	-	-	15	-	1	1	-	1	1	-	-	-	-	-	-	-	-	-	-	-	-	-	-	-	46	0.8097	0.1807
Os	7	1	22	-	1	1	-	8	-	3	2	-	2	-	-	-	-	-	-	-	-	-	-	-	-	-	-	-	-	-	-	-	-	47	0.7364	0.0237
Bl	22	-	-	-	-	-	1	-	-	-	-	-	-	-	6	7	-	1	-	-	-	-	-	-	-	-	-	-	-	-	7	-	44	0.6956	0.1995	
Ni	6	-	-	-	1	-	-	9	-	-	-	22	-	-	-	-	10	-	-	-	-	-	-	-	-	-	-	-	-	-	-	-	48	0.7101	0.0038	
Gr	-	-	-	-	-	-	-	-	-	-	-	-	-	-	-	-	-	-	-	7	20	2	3	-	-	3	4	2	-	-	-	4	45	0.7667	0.1689	
Pl	-	-	-	-	-	-	-	-	-	-	-	-	-	-	-	-	-	-	-	-	-	-	-	12	8	6	-	-	-	-	5	-	31	0.7441	0.0045	
Total	122	7	74	3	21	12	8	33	2	4	2	33	15	2	6	8	11	3	2	1	7	20	2	15	8	6	3	4	2	7	5	4	452			

**Table 2.1:** *Pellioditis marina*. Distribution of the 32 haplotypes among sampling locations. Haplotype diversity (h) and nucleotide diversity ( $\pi$ ) for every location are indicated; n = number of individuals analysed. For sample location abbreviations see legend Fig. 2.1.

The minimum spanning network revealed 32 haplotypes (Fig. 2.2). For convenience, all locations within the Westerschelde were grouped ('Westerschelde') and the two Belgian coastal locations were pooled ('Coast'). The haplotypes are divided into four distinct groups (PmI, PmII, PmIII and PmIV), with a low number of substitutions within each group (one to seven), and high numbers between groups (23 to 32). PmI and PmII consist of 15 and 13 haplotypes respectively, and are clearly more diverse than the PmIII (only one haplotype) and PmIV (only three haplotypes) groups. Haplotype relations within groups PmI and PmII display a star-like pattern, with the rarer haplotypes showing a higher amount of mutational differences. Furthermore, the haplotypes within group PmI have much higher frequencies than haplotypes from the other groups, haplotypes A, D, J and N being particularly abundant in the Westerschelde and at the Belgian coast. Moreover, the commonest haplotypes, A and D, are present in all locations, except Blankenberge, Plymouth and Lake Grevelingen. Haplotypes belonging to group PmIV are restricted to Lake Grevelingen, G2 being the most abundant. PmII haplotypes are rare in the Westerschelde and Oosterschelde, but comprise all individuals from Plymouth. Haplotypes R1 and O have the highest frequency in this group; four haplotypes are unique to Lake Grevelingen (O1, R4, R5 and S2) and three to Plymouth (R2, R3 and S1). Group PmIII consisted of a single haplotype in very low frequency (M,  $n = 2$ ). This haplotype was only found in the Oosterschelde.

Within the PmI group, 2 replacement sites are observed (represented by the rarely encountered haplotypes U ( $n = 3$ ) and W ( $n = 1$ )). Within the PmII group, six replacement sites are detected, three of which are observed in the rare haplotype V ( $n = 2$ ).

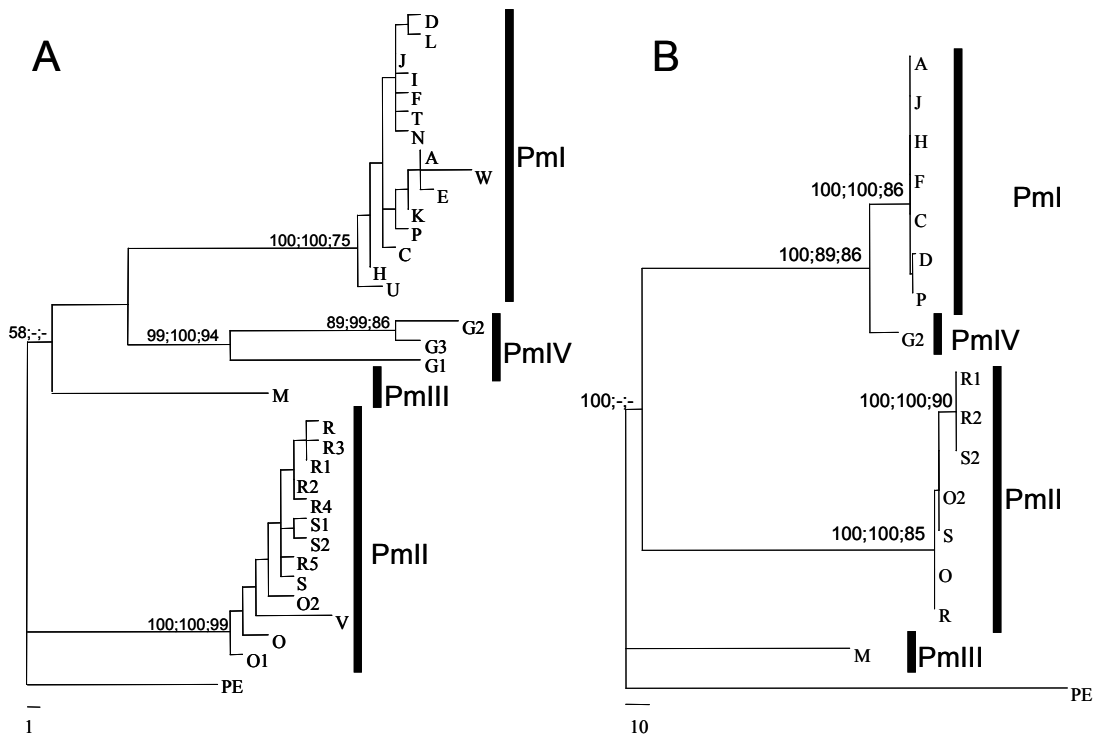


**Fig. 2.2.** *Pellioiditis marina*. Minimum spanning network of the mtDNA COI sequences. The circles are proportional to the frequency of the haplotypes in the total sample. Shared haplotypes among the different hydrodynamic regions are represented by frequency diagrams. Substitutions are represented by black dots, white triangles represent 23 to 32 substitutions.

PHYLOGENETIC ANALYSES

Mitochondrial COI gene

A heuristic search identified 20 most parsimonious trees, which differed from each other only in the position of haplotype V within its clade. One of the MP trees is shown in figure 2.3A. Maximum likelihood and neighbour joining methods gave generally consistent trees. Support for the monophyly of the three major clades (PmI, PmII, PmIV) is strong (> 95 %), while the node that unites haplotype M with those of clades PmI and PmIV lacks good support and was absent in ML and NJ analyses.



**Fig. 2.3.** *Pellioditis marina*. Maximum parsimony trees for (A) COI and (B) ribosomal ITS sequences. Bootstrap values are based on 1000 replicates and are shown for maximum parsimony, neighbour joining and maximum likelihood respectively. The four clades are indicated by PmI, II, III and IV. The congener *Pellioditis ehrenbaumi* (PE) was used as outgroup species.

### Nuclear rDNA

Because the COI-fragment showed high divergences between and low divergences within clades, we analysed a fragment of the nuclear spacer region. The nuclear genome evolves independently from the mitochondrial genome, and is subject to different evolutionary forces. A concordant pattern between these two markers will therefore provide extra support to the observed mitochondrial subdivision in four clades.

In total, 827 – 859 bp of the ribosomal ITS region were sequenced from 17 individuals (Accession numbers AJ867057 - AJ867072), representing the most abundant mitochondrial haplotypes of each mitochondrial clade. Because the PmIII clade consisted of only one haplotype, both individuals belonging to this clade were processed for the nuclear marker. The alignment (888 sites) of the 17 ITS sequences showed that 240 sites were variable (27 %), 233 of which were parsimony informative. The heuristic search yielded a total of 91 most parsimonious trees, which differed only in the relative positions of individuals within clades (Fig. 2.3B). MP, NJ and ML analyses all separated the individuals into three major clades, which were

supported by strong bootstrap values, and individuals of PmIII were separated from the other three groups showing a basal position in the phylogenetic tree. The length of the amplified region varied because of insertion/deletion differences between the four groups (Appendices 2.2 and 2.3). Within the PmII clade, a clustering of the sequences R1, R2 and S2 was supported by high bootstrap values and differed in four transitions and three transversions from the other PmII sequences. Within clade PmI, all sequences were identical, except for sequence P and D, which differed in one and two transitions, respectively, from the other sequences.

Divergences within the clades ranged from 0 to 0.24 % for clade PmI, and from 0 to 0.81 % for clade PmII. Divergences between the different clades were much higher and are summarized in Table 2.2. When the MP tree was calculated using gaps as a fifth base, no differences in topology were found, except for a better separation of the two groups within the PmII clade.

	PmI	PmII	PmIII	PmIV
PmI	-	8.1 - 10.6 %	7.0 - 7.8 %	5.8 - 7.5 %
PmII	11.0 - 12.0 %	-	8.5 - 10.1 %	8.0 - 9.8 %
PmIII	20.9 - 21.1 %	20.3 - 21.1 %	-	6.8 - 7.3 %
PmIV	3.3 - 3.5 %	10.5 - 11.6 %	20.0 %	-

**Table 2.2.** Divergence range between the four clades. Above diagonal are divergences for the mitochondrial COI fragment, below diagonal for the nuclear ITS region.

*INTERSPECIFIC VARIATION AND GEOGRAPHICAL DISTRIBUTION*

The observation that both mitochondrial and nuclear markers show the same subdivision of the sampled individuals, raises the question whether *Pellioditis marina* may comprise several cryptic species. Table 2.3 shows the fixed differences, i.e. the number of base positions at which all sequences of one ‘species’ differ from all sequences of the second ‘species’ (Hey 1991), for both molecular markers between the different clades. PmIII has the highest number of fixed differences in the nuclear ITS marker, while PmII has the highest number of fixed differences in COI.

	PmI	PmII	PmIII	PmIV
PmI	-	29	26	22
PmII	98	-	30	27
PmIII	186	182	-	25
PmIV	37	96	178	-

**Table 2.3.** Number of fixed differences between the four clades for the mtDNA COI fragment above diagonal, and below diagonal for the nuclear ITS region.

The amount of unique fixed differences, i.e. the number of positions at which a species is different from all others (Kliman & Hey 1993), shows the same pattern: PmIII has 155 unique fixed base differences and five unique fixed length differences, which is the highest number for the nuclear marker; PmII has 54 unique fixed base differences and 4 unique length differences, while PmI and PmIV have 18 and 16 unique base differences and no unique length difference (Appendices 2.2 and 2.3). For COI, PmII has the highest amount of unique fixed differences (12), followed by PmIII (10), PmI (7) and PmIV (6) (Appendix 2.1). Fig. 2.1 shows the geographical distribution of each clade along the sampled region. The PmI clade is clearly the most abundant and geographically widespread lineage. It is the dominant lineage within the Westerschelde and Oosterschelde, and is absent from Lake Grevelingen and Plymouth. In Plymouth, only the PmII clade was found and this clade is also abundant in Lake Grevelingen. PmIII is only encountered in the Oosterschelde and PmIV only in Lake Grevelingen. In several of our sample locations, two lineages occurred sympatrically.

#### *POPULATION GENETIC STRUCTURE*

A significant spatial population genetic structure is found when all sampling locations are pooled. This indicates that migration between the different locations is not sufficient to homogenize the COI gene pool. Of all molecular variation found, 55.9 % ( $\phi_{ST} = 0.559$ ,  $p < 0.0001$ ) is explained by differences among locations (Table 2.4). Omitting the Plymouth population, variation between locations is still significant ( $\phi_{ST} = 0.4471$ ,  $p < 0.0001$ ). The MDS plot of the genetic distances clearly shows a large divergence of the Plymouth and Lake Grevelingen samples: 60.14 % of the variation ( $\phi_{CT} = 0.6014$ ,  $p < 0.05$ ) is caused by differences between Plymouth and lake Grevelingen on the one hand, and the Belgian and Dutch populations on the other hand (Fig. 2.4A). The MDS plot does not change when Plymouth and Lake Grevelingen are omitted, although the percentage of variation explained by differences between the remaining populations decreases to 30.58 % ( $\phi_{ST} = 0.30575$ ,  $p < 0.0001$ ).

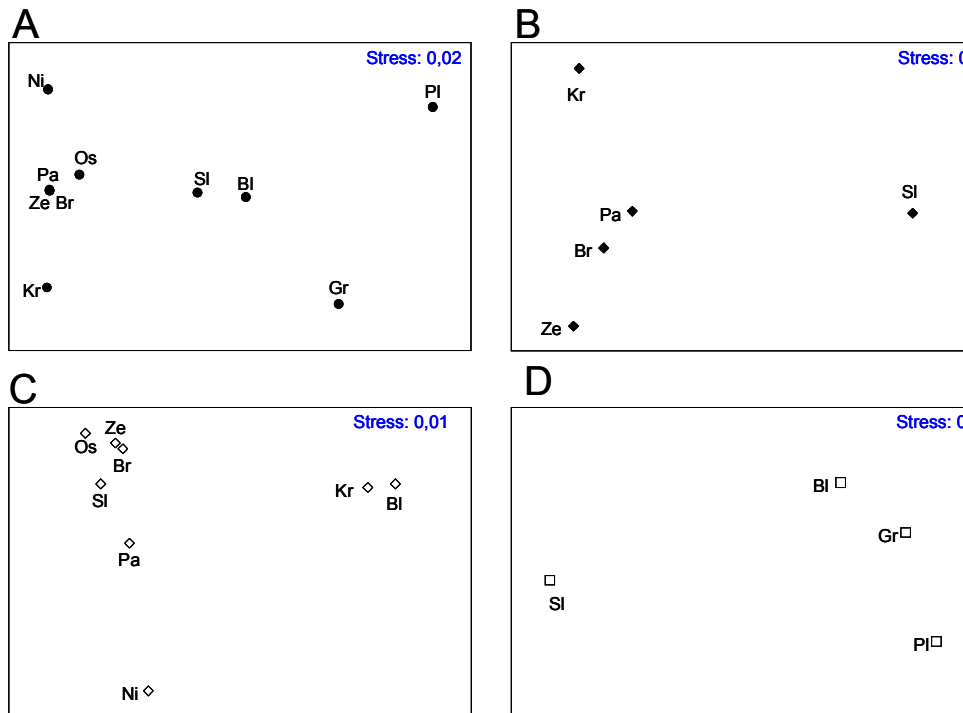
	n	%	$\Phi$	p
All sequences	451			
Among populations		55.90	0.56	***
Within populations		44.10		
Pm I	335			
Among populations		18.76	0.19	***
Within populations		81.24		
Pm II	85			
Among populations		47.00	0.05	***
Within populations		53.00		
Pm III	2	-	-	-
Pm IV	29	-	-	-

**Table 2.4.** Hierarchical analyses of variance across ten populations of *Pellioditis marina*.  $\Phi$  – statistics are calculated for all data combined, and for sequences allocated to their respective clades. (n) number of individuals analysed, (%) percentage variance explained, (p) significance level of  $\phi$  – statistic (\*\*\*) < 0.0001).

When we look at the distribution of the locations within the Westerschelde (Fig. 2.4B), a clear distinction between the most upstream (Kr) and one of the two most downstream locations (Sl) is seen. The highest genetic diversity is found in Sloehaven ( $h = 0.81$ ,  $\pi = 0.181$ ) and the lowest in Kruispolderhaven ( $h = 0.404$ ,  $\pi = 0.003$ ). No significant differentiation is found between the other locations (Breskens, Paulina and Zeedorp,  $\phi_{ST} = 0.00315$ ,  $p = 0.3$ ) within this estuary. Genetic diversity in these locations is comparable but somewhat higher in Paulina (Table 2.1).

AMOVA was also performed on clades PmI and PmII separately. The MDS – plot in Fig. 2.4C shows the genetic distances of PmI between the sampled locations. The coastal zones (Bl and Ni) are clearly differentiated from the Westerschelde and Oosterschelde populations, and AMOVA indicates a significant differentiation (18.76 %) among the locations ( $\phi_{ST} = 0.18762$ ,  $p < 0.0001$ ). Within the Westerschelde, PmI is still significantly structured, albeit less pronounced ( $\phi_{ST} = 0.08475$ ,  $p < 0.0001$ ). This mainly reflects differences between the most upstream location and the three others (Fig. 2.4C). The differentiation with the westernmost coastal location (Ni) is due to the presence of one haplotype unique to that location (haplotype T, except for one individual in Sl). Haplotypes belonging to the PmII clade are also significantly structured, 47 % of the total variation being explained by differences among locations ( $\phi_{ST} = 0.47003$ ,  $p < 0.0001$ ).

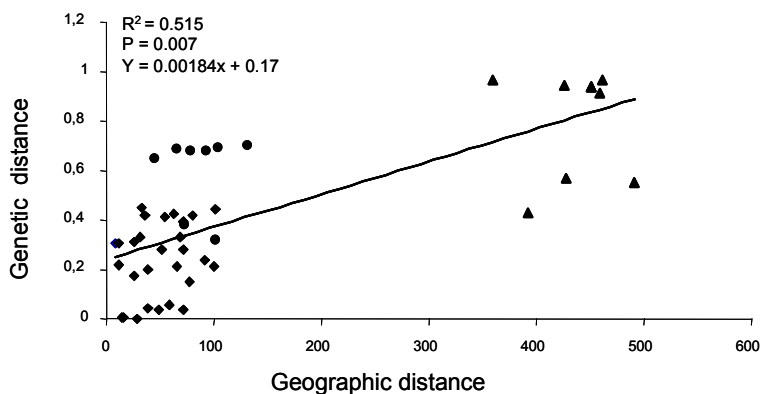




**Fig. 2.4.** *Pellioiditis marina*. Multi-dimensional scaling (MDS) of the Tamura & Nei genetic distance matrix of the COI fragment and its associated stress value. (A) complete dataset (no distinction between clades was made); (B) locations within the Westerschelde (no distinction between clades); (C) clade PmI; (D) clade PmII. For sample location abbreviations see legend Fig. 2.1.

*ISOLATION BY DISTANCE*

Genetic and geographic distances are correlated when all sampled populations are included ( $r = 0.7178$ ,  $p = 0.007$ ). More than 50 % of the molecular variation is explained by geographic distance ( $R^2 = 0.515$ ). When plotting both distances in a scatter diagram (Fig. 2.5), a clear separation of nematodes from Plymouth and from



**Fig. 2.5.** Scatterdiagram of geographic distance vs. genetic distance. Population pairs containing Plymouth are indicated with ▲, those containing lake Grevelingen with ●. All other population pairs are indicated with ◆.

Lake Grevelingen is found. Calculating IBD between the populations from Belgium and The Netherlands (and thus omitting the Plymouth population) still gives a significant ( $r = 0.4725$ ,  $p = 0.037$ ), albeit less strong correlation.

## DISCUSSION

### *POPULATION GENETIC STRUCTURE*

With all data combined, there was a significant population genetic structuring over the sampled area. Even within the Westerschelde, locations were differentiated from each other. The strong differentiation of the Plymouth population (Pl, Fig. 2.4A) was caused by the presence of only PmII in this location. At first sight, these results support the idea of limited dispersal abilities in marine nematodes. Free-living nematodes are small, have an endobenthic life style and lack dispersive stages. Active dispersal is therefore restricted. However, *Pellioditis marina* typically lives on decomposing algae in littoral and coastal environments, and can passively disperse through rafting on floating algae (pers. observation). The dominant currents in the English Channel and the North Sea transport macroalgae from southwest England to the Belgian and Dutch coasts (Turrell 1992, Ducrotoy et al. 2000), and can therefore homogenize populations living on both sides of the North Sea. However, we found a strong differentiation between Plymouth and the Belgian coastal zone, as well as among the stations located in the small area sampled in Belgium and The Netherlands. One possible explanation is that passive dispersal may be inefficient. However, considering the high reproductive potential and short development times of *P. marina* (Vranken & Heip 1983, Moens & Vincx 2000a), even very small founder populations are expected to be sufficient for effective colonisation. Therefore, the genetic structuring on our small geographical scale may rather be explained by repeated colonisation events combined with high reproductive rates (Caudill & Bucklin 2004, De Meester et al. 2002). Monopolisation of resources and local adaptation (which may be prominent in *P. marina*, Moens & Vincx 2000a,b) can then produce persistent genetic structure over small spatial scales in the face of significant gene flow (De Meester et al. 2002).

The differentiation and lower genetic diversity ( $h = 0.404$ ,  $\pi = 0.003$ , Table 2.1) of the most upstream location (Kr) within the Westerschelde may well be linked to the lower salinity and/or higher pollution at this location, rather than by cessation of gene flow. It is in agreement with the range of *P. marina* in the Westerschelde, which extends only just beyond this most upstream sampling location (Moens & Vincx 2000b). However, the salinity gradient in the Westerschelde is paralleled by a

pollution gradient, rendering assignment of species ranges to either factor difficult. Moreover, a whole range of pollutants is present in this estuary with unknown consequences for communities and species living there. Interestingly, De Wolf et al. (2004) also found a correlation of population genetic structure with the salinity / pollution gradient in the Westerschelde for the periwinkle *Littorina littorea*. Toxicants can influence the population genetic structure of a species by mutagenic, physiological or ecological effects, which can lead to a decrease in genetic variation and in frequency of haplotypes (De Wolf et al. 2004). Experimental studies with harpacticoid copepods indicate that severe bottlenecks can occur in populations exposed to toxicants (Street et al. 1998), and environmental history seems to have no effect on their survival ability when copepods are exposed to different concentrations of sediment-associated contaminants (Kovatch et al. 2000). In contrast, Schizas et al. (2001) observed differential survival of three harpacticoid copepod lineages and inferred that this differential survival might explain some of the genetic patterns observed in contaminated habitats.

Contrary to De Wolf et al. (2004), we found no clear differentiation between the Oosterschelde population and the downstream locations in the Westerschelde. Even though there is a storm surge barrier since 1986 between the Oosterschelde and the North Sea, it remains open most of the time. Exchange between neighboring populations remains therefore important. The high degree of genetic differentiation of Lake Grevelingen is caused by the presence of the PmIV lineage, which was absent from all other locations.

#### CRYPTIC SPECIATION

We found a high degree of intraspecific differentiation in the COI gene of *Pellioiditis marina*. Within the Nematoda, intraspecific variation has hitherto only been studied in parasitic species and divergences of the COI gene range from 0.3 – 8.6 % (0.3 – 8.4 % in *Oesophagostomum bifurcum* (de Gruijter et al. 2002), 0.5 – 8.6 % in *Ancylostoma caninum*, 0.3 – 3.3 % in *A. duodenale*, 0.3 - 4.3 % in *Necator americanus* (Hu et al. 2002)). Interspecific divergences within genera range from 4.8 – 13.7 % (11.5 – 13.7 % within *Oesophagostomum*, 4.8 – 12.9 % between *Ancylostoma* and *Necator*). These interspecific values are comparable with the divergences found between the four lineages in the COI gene of *P. marina* (5.8 – 10.6

%, Table 2.2). For comparison, divergences between *P. marina* and its congener *P. ehrenbaumi* range from 7.5 - 9.5 %. Nucleotide differences within lineages are much lower and range from 0.25 - 1.7 %, lower than the above within-species divergences. Furthermore, we found a large amount of fixed differences (= the number of base positions at which all sequences of one lineage differ from all sequences of another lineage) in the COI fragment between our lineages (22 – 29, Table 2.3). Hu et al. (2002) and Zhu et al. (2001) found no fixed differences within sets of populations of *A. duodenale* and *C. ogmorhini* and concluded that these populations belong to the same species. On the other hand, Hu et al. (2002) detected four unequivocal nucleotide positions in a 395bp region of the COI gene between individuals of *N. americanus* from China and Togo, suggesting that these individuals belong to distinct sets of genotypes as a consequence of geographical isolation over a long period of time.

The high levels of COI differentiation between the haplotype groups of *P. marina* are thus in the order of differences found between different species of parasitic nematodes and between congeneric species of *Pellioiditis*. This observation, together with the high amount of fixed differences between these haplotype groups, suggest that the mitochondrial lineages represent different cryptic species of *P. marina*. When morphological stasis persists after speciation events, resulting species may continue to diverge genetically in the absence of morphological differentiation (Rocha – Olivares et al. 2001). Especially in organisms with small body size, the number of taxonomically relevant characters decreases rapidly (Rocha – Olivares et al. 2001).

Analysis of the nuclear ribosomal spacer region is consistent with the hypothesis of cryptic speciation. This region is particularly useful for phylogenies among closely related taxa (taxa that have diverged within the last 50 million years) (Hillis & Dixon 1991), and the region is generally of uniform length and composition within species (Hillis et al. 1991). Sequence differences within each lineage are low (0 – 0.81 %). However, a lot of fixed differences between the four lineages are found (Table 2.3). Lineages PmII and PmIII also contain, respectively, four and five fixed length differences (Appendix 2.2 and 2.3). The concordance between COI and the nuclear marker provides further support that *P. marina* consists of multiple cryptic species using the phylogenetic-species and the genealogical-concordance criteria (Rocha – Olivares et al. 2001). The existence of other cryptic species or intermediate

lineages can not be excluded and additional sampling in time and on a larger geographical scale would probably uncover still more variation in *Pellioiditis marina*.

Hybridisation experiments and detailed morphological analysis of the four *P. marina* lineages will be performed to further substantiate and describe these cryptic species<sup>13</sup>. The ease with which *P. marina* can be cultured in laboratory conditions will also enable us to address differences in autecology.

#### DISTRIBUTION OF THE FOUR LINEAGES

On the geographical scale sampled here, clade PmI is the most abundant with an estuarine and coastal distribution (Fig. 2.1). Within PmI, haplotypes A and D are very common within the Westerschelde, except in the most upstream location (Kr), where only a single individual of haplotype D was found. The ‘star like’ pattern within PmI in the minimum spanning network suggests that haplotype J is the oldest haplotype, which gave rise to all other haplotypes of PmI.

Within the Westerschelde, a gradient of decreasing (organic and chemical) pollution occurs towards the sea, and at the same time, salinity increases. *Pellioiditis marina* is a marine and brackish water nematode, with an optimal fitness at salinities between 10 and 30. However, these ranges are characteristic of populations rather than of species and local adaptation as well as adaptation to culture conditions may be prominent (Moens & Vincx 2000b). From these results, it seems likely that haplotype A is the most tolerant for a range of salinities. In general, the PmI lineage seems to be more tolerant for fluctuating environmental conditions than the other haplotype groups. Lake Grevelingen has no tides, and in these stable conditions PmIV was the only haplotype group found. PmII was found in much lower frequency than the PmI species and contains many haplotypes which are unique to either Lake Grevelingen or to the Plymouth population. The most abundant haplotype (R1 = 15) was shared between these two locations.

From Fig. 2.1, it is obvious that the four cryptic lineages occur sympatrically. As far as we know, *P. marina* is not a specialist feeder, nor is it constrained to a very strict abiotic environment (Moens & Vincx 2000 a, b). Furthermore, we do not

---

<sup>13</sup> See Chapter 5

exclude that the cryptic lineages occur in a temporal succession, correlating with the decomposition stage of the algae and hence the quality of the organic detritus on which they live. Whether speciation occurred sympatrically or allopatrically cannot be inferred from our data.

### CONCLUSION

Although its active dispersal capacities are extremely limited, *Pellioiditis marina* can disperse passively through rafting on floating algae. Our results suggest that this dispersal is either small or that pulsed colonisation events occur. Therefore, information on life strategies, colonisation potential and local adaptation is as important as knowledge of dispersal ability for interpreting the potential relationship between population genetic structure and dispersal capacity.

Phylogenetic analyses of the mitochondrial COI gene and the nuclear ITS region shows the existence of four cryptic lineages within the morphospecies *P. marina*. This cryptic speciation, found in only a small (100 km) geographical range of *P. marina*, has strong implications for diversity estimates within the Nematoda, which are mainly based on morphological characteristics. Because *P. marina* has a very short generation time with a high reproductive output, extrapolations and generalisations to other nematode species have to be done carefully. Nevertheless, this result does indicate that the real species diversity within the phylum Nematoda is probably much higher than hitherto suggested.

### ACKNOWLEDGEMENTS

S.D. acknowledges a grant from the Flemish Institute for the Promotion of Scientific - Technological Research (I.W.T.). T.M. is a postdoctoral fellow with the Flemish Fund for Scientific Research. Further financial support was obtained from Ghent University in BOF – projects 12050398 (GOA) and 011060002. We gratefully acknowledge Dr. P. Somerfield (Plymouth Marine Laboratory) for his help in the collection of the Plymouth samples.



Appendix 2.2: Pellioiditis marina: ITS1 sequences of the 16 haplotypes (H) with EMBL accession numbers (AN). The four haplotype groups (HG) are also indicated. Only variable sites and their positions are represented. Unique fixed length differences for haplotype groups PmII and PmIII are indicated in bold.

Table with 4 main sections (III, II, I, IV) and 16 sub-sections (AJ867068 to AJ867058). Each section contains columns for HG, AN, H (haplotypes), and sequence positions. The sequences are aligned and variable sites are indicated by bold text. The table is split into two parts, with the second part starting at position 111.



