

Selecting relevant predictors for presence-only species distribution modelling.

A case study from the marine environment.

Samuel Bosch^{1,2}, Lennert Tyberghein², Sofie Vranken², Olivier De Clerck¹

¹ Phycology Research Group, Ghent University, Krijgslaan 281-S8, 9000 Ghent, Belgium. E-mail: samuel.bosch@ugent.be

² Flanders Marine Institute (VLIZ), InnovOcean site, Wandelaarskaai 7, B-8400 Oostende.

Study

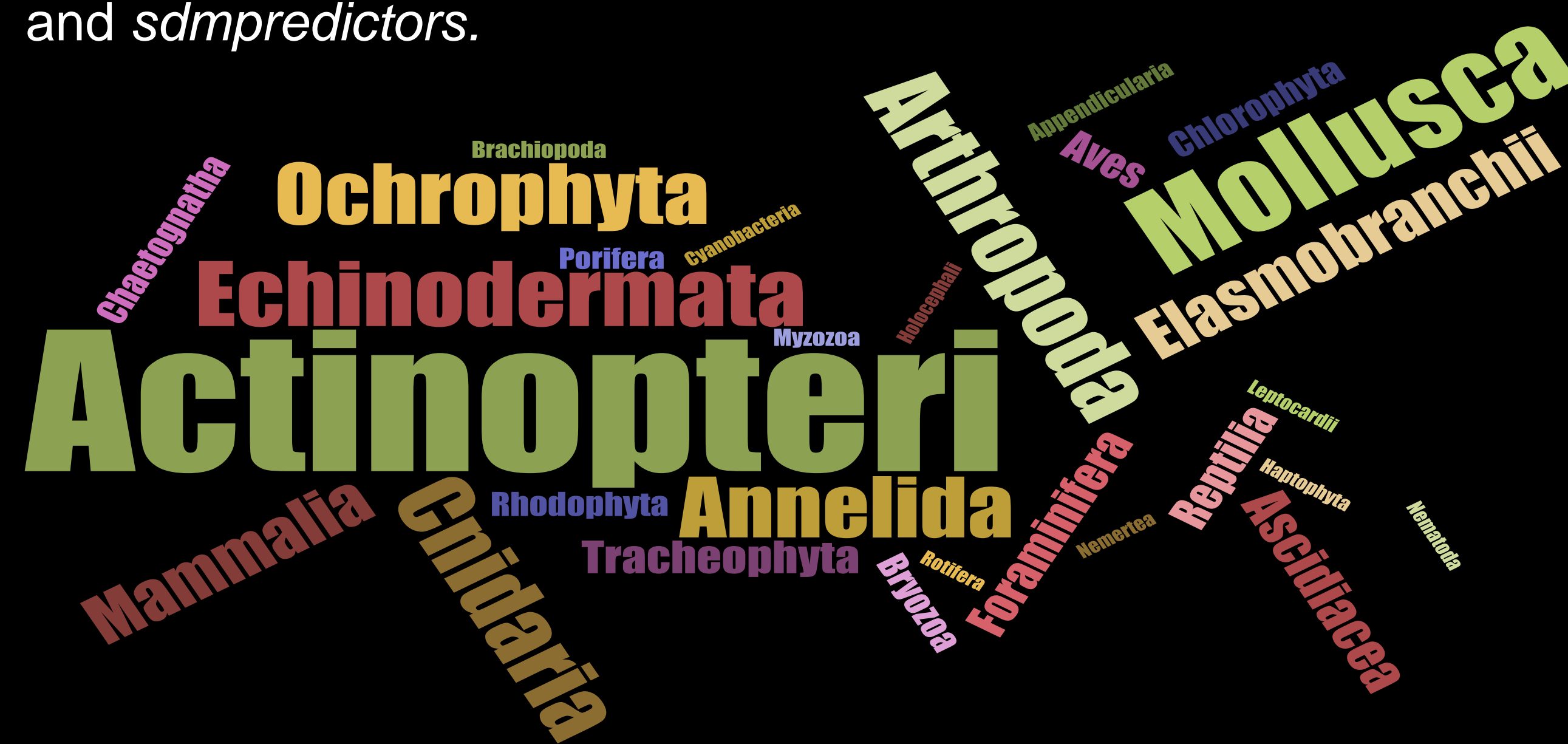
Goals – 1. Identifying relevant predictors for building presence-only species distribution models of marine species. 2. Assess the impact of different modelling setups on the relevant predictors. 3. Case study for the species distribution modelling benchmark dataset MarineSPEED.

Setup – For all 524 species in the MarineSPEED benchmark dataset, distributions were modelled with all combinations of non-correlated environmental variables (Dormann et al., 2013) while varying the number of environmental variables in every one of the models (3,4,7), applying two different sampling bias mitigation techniques (spatial thinning and target-group background) and random or spatial training/test splitting. All setups were compared using four different algorithms (random forests, MaxEnt, GLM and bioclim). Nearly six million models were created and evaluated using the area under the receiver operating characteristics curve (AUC) and the point-biserial correlation (COR) on the UGent High Performance Cluster. Ranking of the predictors within a species was done using rank centrality, rank mean and rank median. Rank differences were analysed using the Friedman test and the Nemenyi post-hoc test. The main R packages used were *marinespeed*, *dismo*, *randomForest*, *scamp* and *ggplot2*.

# of predictors	Cross-validation	Sampling bias
3	Random	No thinning
4	Random	No thinning
7	Random	No thinning
7	Random	No thinning
7	Spatial	No thinning
7	Random	Target-group background
7	Random	Spatial thinning

MarineSPEED

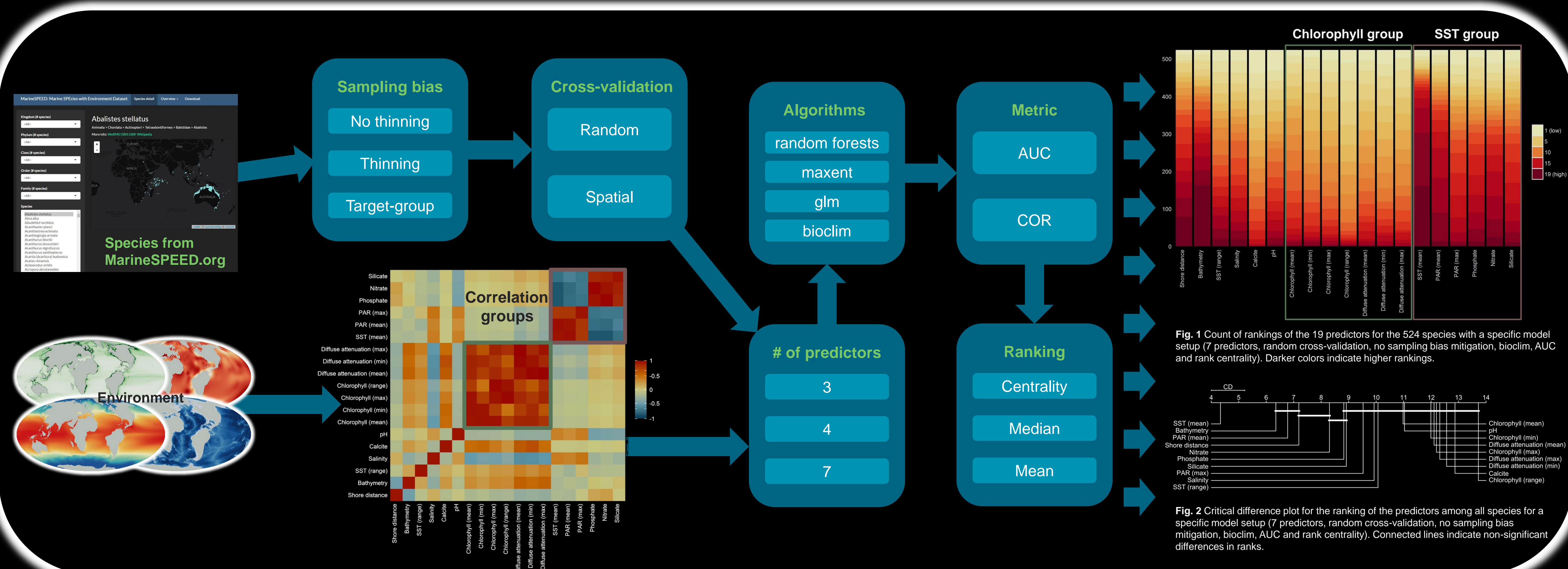
What – A quality-controlled dataset of marine species occurrence data from 524 well studied and well identifiable species from all major taxonomic groups with different range sizes and from different ecoregions. Distribution records were downloaded from public repositories such as OBIS, GBIF, EMODNET and Reef Life Survey, filtered on a 25 km² grid and linked to environmental data from Bio-ORACLE and MARSPEC. Additionally taxa are linked to the WoRMS and EOL taxonomy and traits. Different cross-validation and background datasets are included. The R packages used were *robis*, *rgbif*, *Reol*, *raster* and *sdmpredictors*.



Why – A benchmark dataset facilitates the evaluation of SDM algorithms and methods by decreasing the amount of work needed to collect data. Moreover the broad usage of benchmark datasets renders results of different studies comparable.

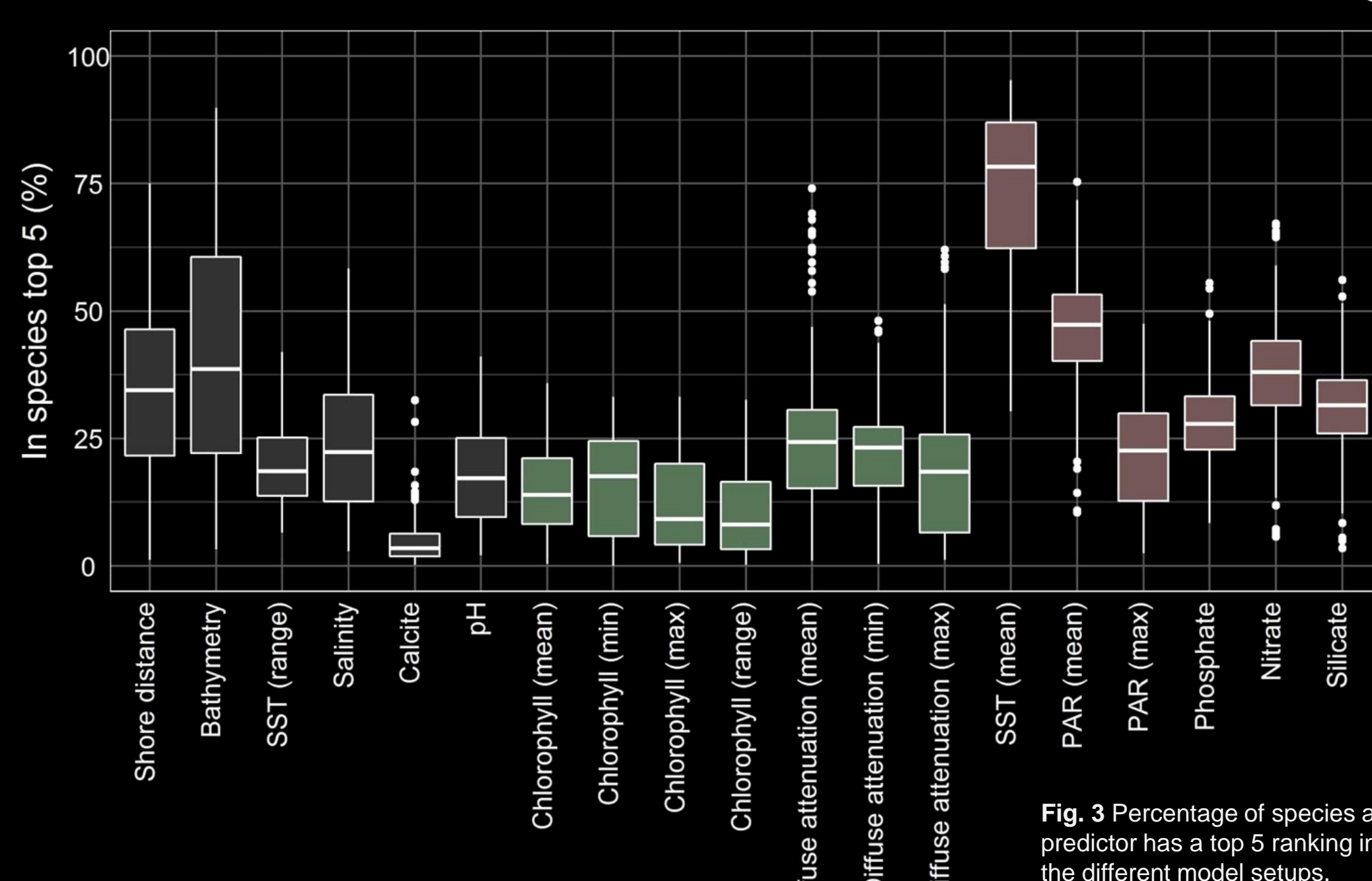
Where – Website: <http://marinespeed.org>

R package: <https://github.com/samuelbosch/marinespeed>



Results

- Mean sea surface temperature, bathymetry, shore distance, mean photosynthetically active radiation, nitrate and silicate have the highest ranking, highlighting their importance for marine species distribution modelling.
- Diffuse attenuation and SST mean are the most relevant predictors in the chlorophyll and SST group respectively.
- Despite clear overall trends, using different modelling setups has an impact on the predictor rankings.



Conclusion

- MarineSPEED is a valuable dataset for exploring SDM methodologies.
- Some predictors are relevant for a wide selection of marine species but the modelling setup impacts the predictor rankings.
- Further analysis is needed to determine the main drivers of the variation in predictor rankings and to discover possible relationships between species, their traits and the relevant predictors.