

Erratum

Erratum to “High sensitivity of skeletogenesis to Pb in the
asteroid *Asterias rubens* (Echinodermata)”
[Aquat. Toxicol. 40 (1997) 1–10][☆]

A. Temara ^{a,b,*}, Q.A. Nguyen ^a, A.N. Hogarth ^c, M. Warnau ^a, M. Jangoux ^{a,d},
P. Dubois ^a

^a Laboratoire de Biologie marine, Université Libre de Bruxelles (CP 160/15), 50 av. F.D. Roosevelt, B-1050 Brussels, Belgium

^b Department of Applied Biology and Biotechnology, RMIT-University, Melbourne, Vic 3001 Australia

^c Department of Zoology, National University of Singapore, Singapore, Singapore

^d Laboratoire de Biologie marine, Université de Mons-Hainaut, Mons, Belgium

The publisher regrets that Figs. 1 and 2 were incorrectly published in black and white. The figures should be as follows:

* Corresponding author.

[☆] PII of original article S0166-445X(97)00042-8.

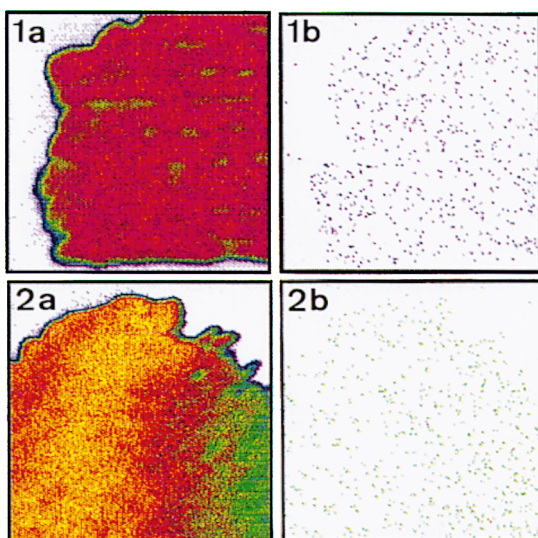


Fig. 1. *Asterias rubens*: elemental maps of the regenerate region of a spine of a control asteroid as depicted by nuclear microscopy, showing the concentrations of (a) Ca and (b) Pb. Map size is $160 \times 160 \mu\text{m}$. The maps are colour coded for X-ray intensity (blue < green < yellow < red). The colour scale is semi-quantitative and provides a pictorial representation whereas statistics are quantitative (see results) (National University of Singapore, Nuclear Microscopy Laboratory).

Fig. 2. *Asterias rubens*: elemental maps of the regenerate region of a spine of an asteroid exposed to $50 \mu\text{g Pb l}^{-1}$ for 15 days, showing the concentrations of (a) Ca and (b) Pb. Colour coding as in Fig. 1 (National University of Singapore, Nuclear Microscopy Laboratory).