

Researches on Crustacea No. 20 (1991) : 63-65

Abnormality found in the Cheliped of *Geryon affinis granulatus* SAKAI

Kazutoshi OKAMOTO

Shizuoka Prefectural Fish Farming Center

オオエンコウガニの鉗脚にあらわれた奇形について

岡 本 一 利

静岡県栽培漁業センター

Recently the present author could have an opportunity to study a case of abnormality found in the immovable finger of the right cheliped of *Geryon affinis granulatus* (SAKAI, 1978).

The abnormal specimen was obtained by the crab-trap "Kani-Kago" from the depth of about 500m, off Hedamura, Suruga Bay, Shizuoka Prefecture on Dec. 11, 1990. The crab with the abnormal cheliped was a berried female, 17.9cm in carapace width, as shown in Fig. 1.

A chela-like structure, about 3cm in length, may be found at the proximal portion of the immovable finger, and its angle between the finger and the structure is about 50° as shown in Fig.1:below. The sub-chelate projection a and b have 5 and 3 serrations, respectively, the angle between these projections is about 65°. There is no articulation with the original segment, so it is apparently not functional. This abnormality seem to have been caused by hypertypic regeneration of the wounded chela.

Several papers dealing with the abnormal cheliped in some brachyuran crustaceans of Japanese species are released (e. g. SUZUKI, 1963; MOTOH, 1971; SUZUKI & ODAWARA, 1971). The present abnormality is much similar to a case of hypertypic regeneration, supernumerary chela developed on the outer margin of the original immovable finger without joint found in the crab, *Erimacrus isenbecki* (BRANDT) (SUZUKI & ODAWARA, 1971).

References

- MOTOH, H. 1971. Abnormalities found in the left cheliped of Japanese edible crab, *Chionoecetes japonicus* RATHBUN. *Res. Crust.*, 4/5: 184-190.
- SUZUKI, H. 1963. An abnormality found in the cheliped of *Macrophthalmus japonicus* DE

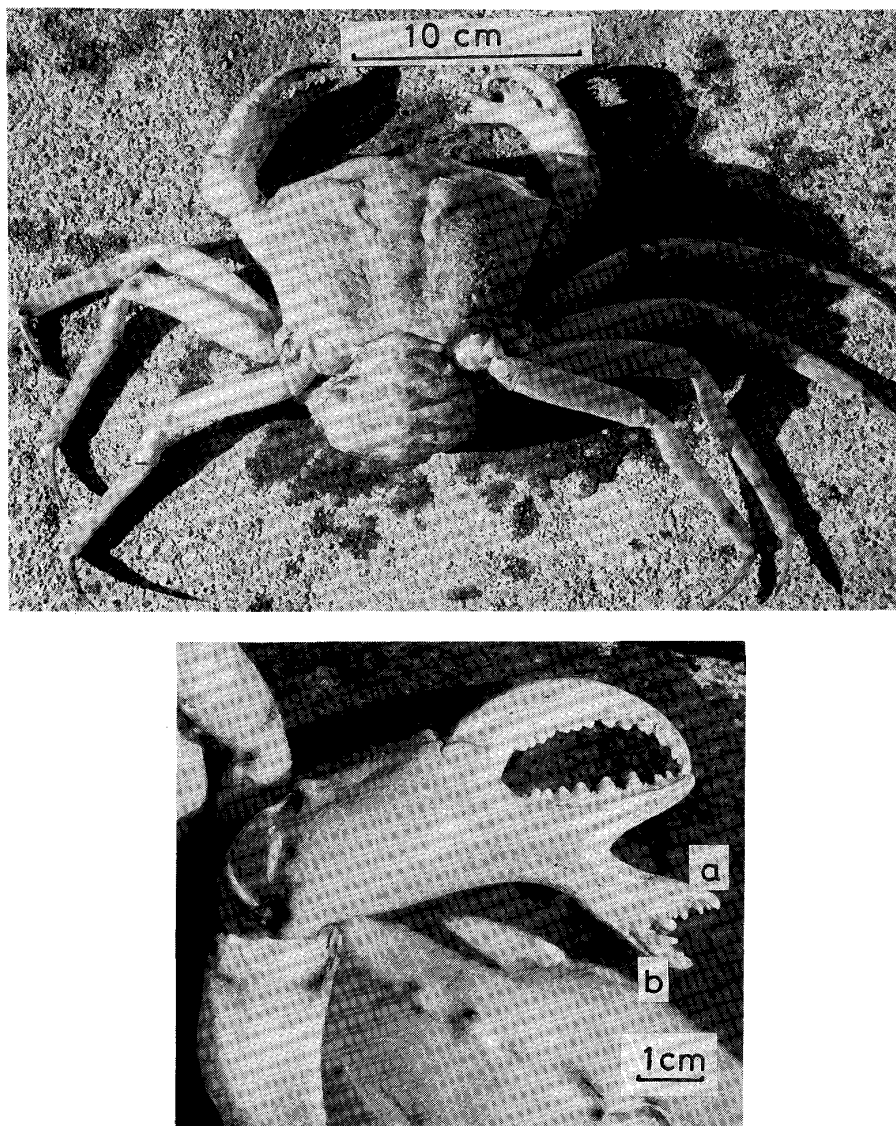


Fig. 1. *Geryon affinis granulatus* SAKAI.
above: Dorsal aspect of a berried female. Note the abnormality in the right cheliped.
below: Abnormality in the right cheliped (dorsal view).
a, b, abnormal finger.

HAAN. *Res. Crust.*, 1: 51-53.

SUZUKI, H and ODAWARA, T. 1971. Malformation found in the Chelipeds of two edible crabs with 2 text-figures. *Res. Crust.*, 4/5: 191-195.

要 旨

1990年12月11日に静岡県戸田村沖で獲れたオオエンコウガニ *Geryon affinis granulatus* の抱卵雌の右鉗脚に、過剰再生によると思われる奇形を観察した。不動指の基部より約50°の

角度で下方へ向かって長さ約 3cm の構造物が生じていた。それには、鉗状に約 65° の角度で開く二又した突起が生じており、それ自体や、その構造物と掌節との間には関節は認められなかった。