

# Mitochondrial DNA Part B

## Resources

ISSN: (Print) (Online) Journal homepage: <https://www.tandfonline.com/loi/tmdn20>

---

## The complete mitochondrial genome of *Cyphocaris challengerii* (Amphipoda: Cyphocarididae)

Chloe N. Rabinowitz, Shannon D. Brown, Sean M. McAllister, Amanda K. Winans, Julie E. Keister & Matthew P. Galaska

**To cite this article:** Chloe N. Rabinowitz, Shannon D. Brown, Sean M. McAllister, Amanda K. Winans, Julie E. Keister & Matthew P. Galaska (2023) The complete mitochondrial genome of *Cyphocaris challengerii* (Amphipoda: Cyphocarididae), *Mitochondrial DNA Part B*, 8:10, 1128-1131, DOI: [10.1080/23802359.2023.2270206](https://doi.org/10.1080/23802359.2023.2270206)

**To link to this article:** <https://doi.org/10.1080/23802359.2023.2270206>



This work was authored as part of the Contributor's official duties as an Employee of the United States Government and is therefore a work of the United States Government. In accordance with 17 U.S.C. 105, no copyright protection is available for such works under U.S. Law.



View supplementary material [↗](#)



Published online: 25 Oct 2023.



Submit your article to this journal [↗](#)



Article views: 136








View related articles [↗](#)



View Crossmark data [↗](#)

## The complete mitochondrial genome of *Cyphocaris challengerii* (Amphipoda: Cyphocarididae)

Chloe N. Rabinowitz<sup>a</sup>, Shannon D. Brown<sup>b,c</sup> , Sean M. McAllister<sup>b,c</sup> , Amanda K. Winans<sup>d</sup> , Julie E. Keister<sup>d</sup>   
and Matthew P. Galaska<sup>c</sup> 

<sup>a</sup>School of Environmental and Forest Sciences, University of Washington, Seattle, WA, USA; <sup>b</sup>Cooperative Institute for Climate, Ocean, & Ecosystem Studies, University of Washington, Seattle, WA, USA; <sup>c</sup>Pacific Marine Environmental Laboratory, National Oceanographic and Atmospheric Administration, Seattle, WA, USA; <sup>d</sup>School of Oceanography, University of Washington, Seattle, WA, USA

### ABSTRACT

The amphipod *Cyphocaris challengerii* is a globally distributed, highly abundant species of zooplankton. Here, we report the complete mitochondrial genome of *C. challengerii* obtained using the Illumina sequencing platform from a specimen collected from Puget Sound, Washington. The mitogenome is a circular DNA molecule with a size of 14,338 bp and 26.7% GC content, with 13 protein-encoding genes, 2 rRNAs, and 22 tRNAs annotated. A maximum likelihood phylogenetic analysis including *C. challengerii* and all other available mitogenomes from Amphipoda places our mitogenome firmly within the Lysianassoidea superfamily, as expected. The newly described mitochondrial genome of *C. challengerii* fills a gap in valuable reference data for detecting this organism using molecular methods such as environmental DNA.

### ARTICLE HISTORY

Received 21 May 2023  
Accepted 8 October 2023

### KEYWORDS

Mitogenome; mtDNA; next-generation sequencing; Lysianassoidea

### Introduction



The genus *Cyphocaris* Boeck 1871 includes pelagic and demersal amphipods with a cosmopolitan distribution (Lowry and Stoddart 2003). Twenty species are recognized within this genus (WoRMS Editorial Board 2022), including *Cyphocaris challengerii* Stebbing 1888, which is distributed worldwide (Bowman and McCain 1967). *Cyphocaris challengerii* is the most abundant gammarid amphipod in the mesopelagic zone of the subarctic Pacific, and the species plays an important role in the pelagic food web (Bowman and McCain 1967; Yoo et al. 1970). This carnivorous amphipod species consumes zooplankton, therefore serving as a trophic link between smaller organisms and larger zooplankton predators (Haro-Garay 2003). Additionally, *C. challengerii* have a high essential fatty acid content, which indicates they are a nutrient-rich food source for their predators (Costalago et al. 2020; Hiltunen et al. 2022). Currently, there are no mitochondrial genomes available for the Family Cyphocarididae Lowry & Stoddart 2003, and no available sequences for *C. challengerii*. In this study, we detail the complete mitogenome of *C. challengerii* to provide insight into the evolutionary history and phylogenetic relationships.


### Materials and methods

Eight *C. challengerii* individuals were collected from Carr Inlet, Puget Sound (47°16'35.76" N, 122°42'29.52" W) on 15

September 2019 at 17:18 UTC using a 335- $\mu$ m mesh bongo net towed obliquely to 90 m depth at the 105 m deep station P38. Specimens were identified by A. Winans, a trained taxonomist in J. Keister's laboratory at the University of Washington, comparing characteristics with Hughes and Lowry (2015) taxonomic key (whole organism photographed for Figure 1). Genomic DNA was extracted from the body tissue of one whole specimen (T367) using the DNeasy Blood and Tissue kit (Qiagen, Hilden, Germany), according to the manufacturer's instructions. DNA quality was checked on a 1.5% agarose gel and quantified using a Qubit 4 Fluorometer. The DNA extract is archived with the Ocean Molecular Ecology group at the NOAA Pacific Marine Environmental Laboratory (contact corresponding author) under specimen identification T367. High-throughput paired-end 2  $\times$  150 bp sequencing was performed at Azenta Life Sciences (South Plainfield, NJ) on an Illumina HiSeq 4000 after library prep with the NEBNext Ultra DNA Library Prep Kit, producing 48.9 million raw paired reads totaling 14.7 Gbp.

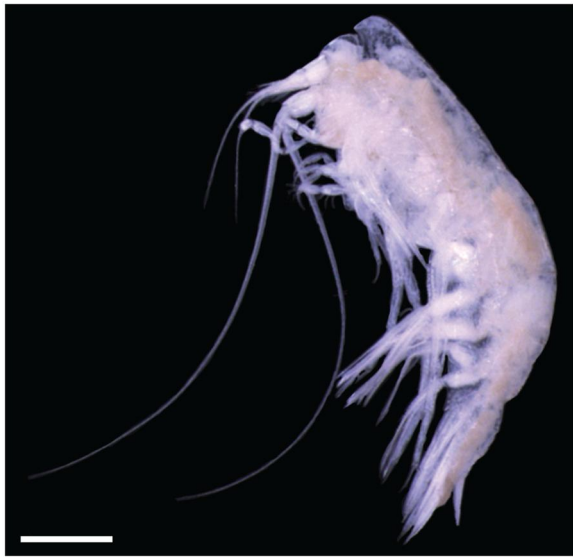
Raw reads were trimmed to remove adaptors using Trimmomatic 0.39 (Bolger et al. 2014) and then merged using Flash 1.2.11 (Magoc and Salzburg, 2011). Adaptor-trimmed merged and remaining unmerged reads were then quality-filtered using a 4 bp Q20 sliding window in Trimmomatic. Quality filtering produced 31.4 million paired reads and 16.7 million unpaired reads (including both merged and quality filtered unpaired reads) totaling 12.6 Gbp. Quality-controlled reads were then assembled using SPAdes 3.15.5 with k-mer

**CONTACT** Matthew P. Galaska  [matt.galaska@noaa.gov](mailto:matt.galaska@noaa.gov)  Pacific Marine Environmental Laboratory, National Oceanographic and Atmospheric Administration, Seattle, WA, USA

 Supplemental data for this article can be accessed online at <https://doi.org/10.1080/23802359.2023.2270206>.

This work was authored as part of the Contributor's official duties as an Employee of the United States Government and is therefore a work of the United States Government. In accordance with 17 U.S.C. 105, no copyright protection is available for such works under U.S. Law.

This is an Open Access article distributed under the terms of the Creative Commons Attribution License (<http://creativecommons.org/licenses/by/4.0/>), which permits unrestricted use, distribution, and reproduction in any medium, provided the original work is properly cited. The terms on which this article has been published allow the posting of the Accepted Manuscript in a repository by the author(s) or with their consent.



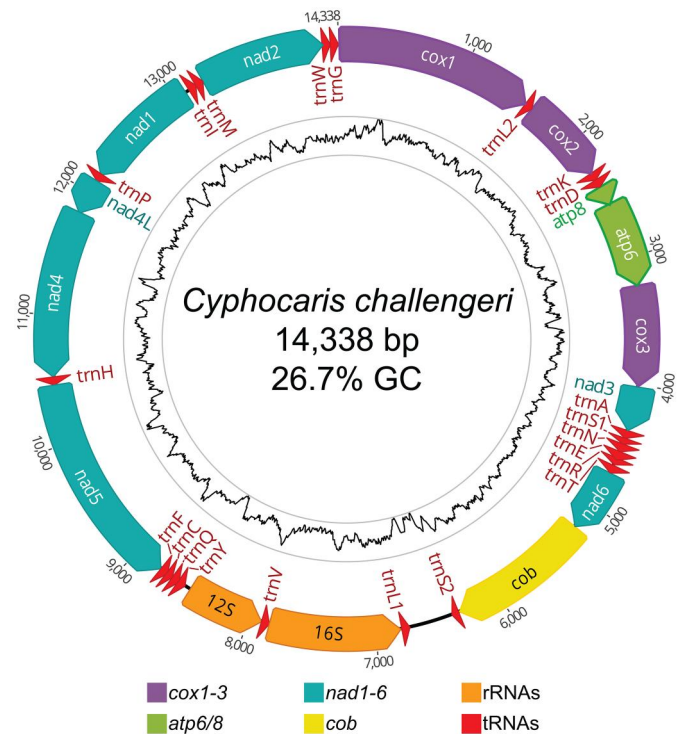
**Figure 1.** Photograph of the *Cyphocaris challengerii* specimen sequenced in this study. Scale bar 1 mm. Photo taken by C. Rabinowitz.

sizes at 21, 55, 85, 115, and 127 bp assuming an isolate genome (Prijbelski et al. 2020). A complete, circular mitogenome with 12.7x coverage was pulled from this assembly using GetOrganelle (Jin et al. 2020). Accuracy of the completed mitogenome was confirmed by aligning the quality-controlled reads (Q30 mapping score) to the final mitogenome product using Bowtie 2 (Supplemental Figure 1) (Langmead and Salzberg 2012). Mitogenome annotation was completed using the MITOS web server (Bernt et al. 2013), with additional annotation using MitoZ (Meng et al. 2019) to identify the *trnL1* gene. Small and large subunit rRNA genes were annotated by hand using reference amphipod mitogenomes aligned to rRNA secondary structures (Pons et al. 2014). Visualizations of the mitogenome annotation were modified from outputs generated by Geneious Prime (v.2022), including standard percent GC calculations.

To confirm the phylogenetic placement and taxonomic assignment of *C. challengerii*, we aligned the amino acids of all 13 protein-encoding genes available from Amphipoda mitogenomes (111 circular and 87 linear) using MUSCLE 3.8.425 (Edgar 2004), and masked the alignment to remove any position containing >30% gaps. A maximum likelihood phylogenetic tree was constructed from this alignment using the PROTGAMMAJTT model in RAxML 8.2.12, with 300 bootstrap replicates (Stamatakis 2014). The resulting phylogenetic tree was plotted using Iroki (Moore et al. 2020). References for mitogenomes used in the phylogenetic tree are provided in Supplemental Table 1.

## Results

The assembled circular mitogenome of *C. challengerii* (accession OQ064431) is 14,338 bp long with an average GC content of 26.7% (35.5% A, 37.9% T, 18.0% C, 8.7% G). The mitogenome contains 13 protein-encoding genes, 2 ribosomal RNAs, and 22 tRNAs (Figure 2). Four different start codons were found: ATG ( $n=5$ ), ATT ( $n=4$ ), TTT ( $n=2$ ), and ATA ( $n=2$ ). The control region is likely located between the *trnL1* and *trnS2* genes, in an AT-rich (85.8%) 339 bp non-coding region with poly-T



**Figure 2.** Circular mitogenome map of *Cyphocaris challengerii*. All annotated genes are indicated with their direction. Inner track shows GC content with an 80 bp sliding window; high (51% GC) and low (5% GC) values are bounded by the gray rings.

motifs, though experimental evidence is required to confirm. The mitochondrial genome was reordered from the original assembly to begin with the start codon for cytochrome oxidase I (COI). In addition to the mitogenome, we recovered two haplotypes of the complete nuclear rRNA-ITS region (accessions OQ093270 and OQ093271), with haplotype B containing a 5 bp and 16 bp insertion in the ITS2 region compared to haplotype A (see notes on Genbank record).

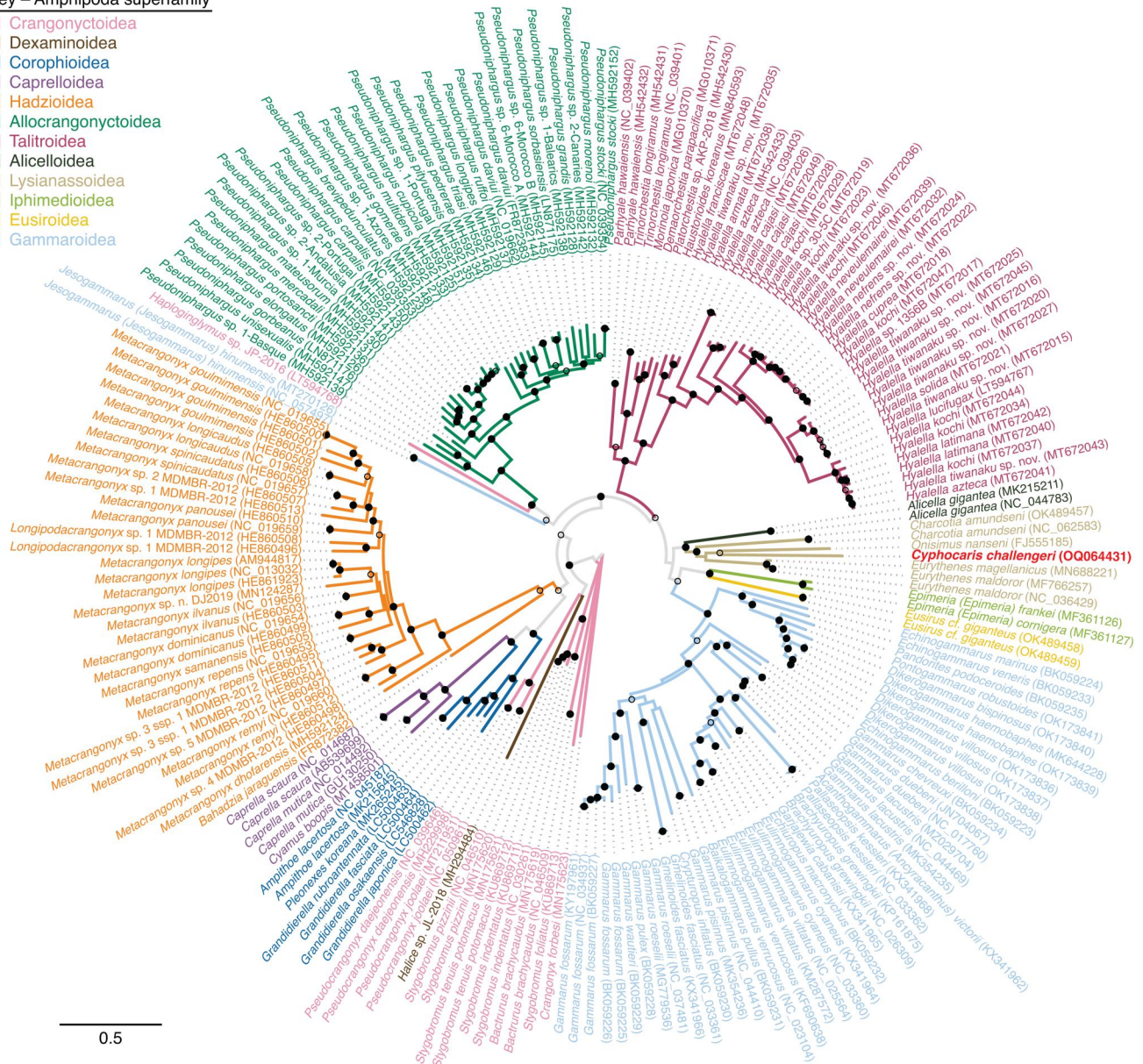
Phylogenetic analysis puts *C. challengerii* as a sister taxon to *Onisimus nanseni* (Sars 1900), with the next closest relatives in the genus *Eurythenes* (Smith 1882) (Figure 3). As expected, the closest relatives of *C. challengerii* all reside within the superfamily Lysianassoidea (Dana 1849), forming a monophyletic clade. A similarly constructed tree based on nucleotide sequences and adding the rRNA genes showed a similar topology, with the exception of the two *Jesogammarus* (*Jesogammarus*) *hinumensis* (Morino 1993) sequences, which fall basal to the Lysianassoidea with low bootstrap support (data not shown). The protein-encoding and rRNA gene orientation and order for *C. challengerii* most closely resemble other amphipods from the parvorder Lysianassidira, particularly *Eurythenes magellanicus* (Milne Edwards 1848), *Eurythenes maldoror* (D'Udekem d'Acoz and Havermans 2015), and *Alicella gigantea* (Chevreux 1899). However, its closest relative, *O. nanseni*, does not share this mitogenome order.

## Discussion and conclusion

The complete mitochondrial genome and nuclear rRNA-ITS region of *C. challengerii* presented in this study is the first complete genomic reference data for the Cyphocarididae family. Currently, only partial-length COI sequences are registered in NCBI (*Cyphocaris bouvieri* (Chevreux 1916),

Key – Amphipoda superfamily

- Crangonyctoidea
- Dexaminoidea
- Corophioidea
- Caprellioidea
- Hadzioidea
- Allocrangonyctoidea
- Talitroidea
- Alicelloidea
- Lysianassoidea
- Iphimedioidea
- Eusiroidea
- Gammaroidea



**Figure 3.** Maximum likelihood phylogenetic tree of a concatenated alignment of all thirteen protein encoding genes available from Amphipoda mitogenomes. *Cyphocaris challengerii* label is highlighted in red. Branches are colored by superfamily. Bootstrap values are indicated at nodes with a solid dot ( $\geq 75\%$  support), open dot ( $\geq 50\%$ ,  $< 75\%$  support), or no dot ( $< 50\%$  support).

*Cyphocaris tunicola* (Lowry and Stoddart 1997), and non-specified BOLD voucher specimens). Thus, this work will enhance our ability to detect this species and its close relatives in environmental DNA (eDNA) observatories, improving ecosystem monitoring and modeling (Mathieu et al. 2020).

**Acknowledgements**

We thank the captain and crew of the R/V Rachel Carson. We also thank the UW Washington Ocean Acidification Center for providing the opportunity to collect these samples.

**Ethical approval**

No ethics approvals were required for the amphipod specimens collected in this project because the target invertebrate species is not listed as

endangered, protected, or regulated. The waters of the Puget Sound do not require permits for access.

**Authors' contributions**

The conception, design, and methodology of this study were completed by CNR, SDB, SMM, JEK, and MPG. The collection and identification of samples were completed by AKW and CNR. The analysis and interpretation of data were completed by SMM and MPG. All authors were involved in the drafting and revising of the paper. All authors agreed the final version to be published and agreed to be accountable for all aspects of the work.

**Disclosure statement**

No potential conflict of interest was reported by the authors.

## Funding

This publication was partially funded by the Cooperative Institute for Climate, Ocean, & Ecosystem Studies (CICOES) under National Oceanic and Atmospheric Administration (NOAA) Cooperative Agreement NA20OAR4320271, Contribution No. 2022-1246. This is the NOAA Pacific Marine Environmental Laboratory (PMEL) Contribution No. 5455. Additional funding support for a summer internship was provided by the University of Washington (UW) EarthLab. Funding for collecting and identifying *C. challengerii* was provided through the Washington Ocean Acidification Center to Julie E. Keister. Moira Galbraith at the Fisheries and Oceans Canada Institute of Ocean Sciences provided valuable consultation on the identification of *C. challengerii*. This work is also supported by the University of Washington EarthLab.

## ORCID

Shannon D. Brown  <http://orcid.org/0000-0001-9808-2638>  
 Sean M. McAllister  <http://orcid.org/0000-0001-6654-3495>  
 Amanda K. Winans  <http://orcid.org/0000-0002-8093-1694>  
 Julie E. Keister  <http://orcid.org/0000-0002-9385-5889>  
 Matthew P. Galaska  <http://orcid.org/0000-0002-4257-0170>

## Data availability statement

The complete mitochondrial genome of *Cyphocaris challengerii* is available on NCBI under accession number OQ064431. The complete rRNA-ITS region of two haplotypes (A/B) is available under accession number OQ093270 and OQ093271, respectively. The raw sequencing data from the *C. challengerii* genome is available through NCBI's SRA, under BioProject, SRA, and BioSample accession numbers PRJNA913968, SRR22972441, and SAMN32316678, respectively.

## References

- Bernt M, Donath A, Jühling F, Externbrink F, Florentz C, Fritzsche G, Pütz J, Middendorf M, Stadler PF. 2013. MITOS: improved de novo metazoan mitochondrial genome annotation. *Mol Phylogenet Evol.* 69(2):313–319. doi: [10.1016/j.ympev.2012.08.023](https://doi.org/10.1016/j.ympev.2012.08.023).
- Boeck A. 1871. Crustacea amphipoda borealia et arctica. *Forhandlinger i Videnskabs-Selskabet i Christiania.* 1870:83–280.
- Bolger AM, Lohse M, Usadel B. 2014. Trimmomatic: a flexible trimmer for Illumina sequence data. *Bioinformatics.* 30(15):2114–2120. doi: [10.1093/bioinformatics/btu170](https://doi.org/10.1093/bioinformatics/btu170).
- Bowman TE, McCain JC. 1967. Variation and distribution of the pelagic amphipod *Cyphocaris challengerii* in the Northeast Pacific (Gammaridea: lysianassoidea). *Proceedings of the United States National Museum.* 122(3588):1–14. doi: [10.5479/si.00963801.122-3588.1](https://doi.org/10.5479/si.00963801.122-3588.1).
- Chevreaux E. 1899. Sur deux espèces géantes d'amphipodes provenant des campagnes du yacht Princesse Alice. *Bull Soc Zool France.* 24: 152–158. doi: [10.5962/bhl.part.24435](https://doi.org/10.5962/bhl.part.24435).
- Chevreaux E. 1916. Sur les Amphipodes du genre *Cyphocaris* Boeck recueillis par la "Princesse Alice" au moyen du filet Richard à grande ouverture. *Bull Institut Océanogr Monaco.* 319:1–6.
- Costalago D, Forster I, Nemcek N, Neville C, Perry RI, Young K, Hunt BPV. 2020. Seasonal and spatial dynamics of the planktonic trophic biomarkers in the Strait of Georgia (northeast Pacific) and implications for fish. *Sci Rep.* 10(1):8517. doi: [10.1038/s41598-020-65557-1](https://doi.org/10.1038/s41598-020-65557-1).
- Dana JD. 1849. Synopsis of the genera of Gammaracea. *Am J Sci Arts* 8(ser. 2):135–140.
- D'Udekem d'Acoz C, Havermans C. 2015. Contribution to the systematics of the genus *Eurythenes* S.I. Smith in Scudder, 1882 (Crustacea: Amphipoda: Lysianassoidea: Eurythenidae). *Zootaxa.* 3971: 1–80. doi: [10.11646/zootaxa.3971.1.1](https://doi.org/10.11646/zootaxa.3971.1.1).
- Edgar RC. 2004. MUSCLE: a multiple sequence alignment method with reduced time and space complexity. *BMC Bioinformatics.* 5(1):113. doi: [10.1186/1471-2105-5-113](https://doi.org/10.1186/1471-2105-5-113).
- Edwards MH. 1848. Sur un crustacé amphipode, remarquable par sa grande taille. *Ann Sci Naturelles Zool.* 9(Ser. 3):398.
- Haro-Garay MJ. 2003. Diet and functional morphology of the mandible of two planktonic amphipods from the Strait of Georgia, British Columbia, *Parathemisto pacifica* (Stebbing, 1888) and *Cyphocaris challengerii* (Stebbing, 1888). *Crustac.* 76(11):1291–1312. doi: [10.1163/156854003323009821](https://doi.org/10.1163/156854003323009821).
- Hiltunen M, Strandberg U, Brett MT, Winans AK, Beauchamp DA, Kotila M, Keister JE. 2022. Taxonomic, temporal, and spatial variations in zooplankton fatty acid composition in Puget Sound, WA, USA. *Estuaries Coasts.* 45(2):567–581. doi: [10.1007/s12237-021-00973-8](https://doi.org/10.1007/s12237-021-00973-8).
- Hughes LE, Lowry JK. 2015. A review of the world Cyphocarididae with description of three new species (Crustacea, Amphipoda, Lysianassoidea). *Zootaxa.* 4058(1):1–40. doi: [10.11646/zootaxa.4058.1.1](https://doi.org/10.11646/zootaxa.4058.1.1).
- Jin JJ, Yu WB, Yang J-B, Song Y, dePamphilis CW, Yi TS, Li DZ. 2020. GetOrganelle: a fast and versatile toolkit for accurate de novo assembly of organelle genomes. *Genome Biol.* 21(1):241. doi: [10.1186/s13059-020-02154-5](https://doi.org/10.1186/s13059-020-02154-5).
- Langmead B, Salzberg SL. 2012. Fast gapped-read alignment with Bowtie 2. *Nat Methods.* 9(4):357–359. doi: [10.1038/nmeth.1923](https://doi.org/10.1038/nmeth.1923).
- Lowry JK, Stoddart HE. 1997. Amphipoda Crustacea IV. Families Aristeidae, Cyphocarididae, Endeavouridae, Lysianassidae, Scopelochelidae, Uristidae. *Ser Memoirs Hourglass Cruises.* 10:148.
- Lowry JK, Stoddart HE. 2003. Crustacea: Malacostraca: Peracarida: Amphipoda, Cumacea, Mysidacea. In: P. L. Beesly & W. W. K. Houston, editors. *Zoological Catalogue of Australia*, p. 92–93. Collingwood, Victoria, Australia: CSIRO Publishing.
- Magoc T, Salzberg SL. 2011. FLASH: fast length adjustment of short reads to improve genome assemblies. *Bioinformatics.* 27(21):2957–2963. doi: [10.1093/bioinformatics/btr507](https://doi.org/10.1093/bioinformatics/btr507).
- Mathieu C, Hermans SM, Lear G, Buckley TR, Lee KC, Buckley HL. 2020. A systematic review of sources of variability and uncertainty in eDNA data for environmental monitoring. *Front Ecol Evol.* 8:135. doi: [10.3389/fevo.2020.00135](https://doi.org/10.3389/fevo.2020.00135).
- Meng G, Li Y, Yang C, Liu S. 2019. MitoZ: a toolkit for animal mitochondrial genome assembly, annotation and visualization. *Nucleic Acids Res.* 47(11):e63–e63. doi: [10.1093/nar/gkz173](https://doi.org/10.1093/nar/gkz173).
- Morino H. 1993. A new species of the genus *Jesogammarus* (Amphipoda: Anisogammaridae) from brackish waters of Japan. *Publication Itako Hydrobiological Station.* 6:9–16.
- Moore RM, Harrison AO, McAllister SM, Polson SW, Wommack KE. 2020. Iroki: automatic customization and visualization of phylogenetic trees. *PeerJ.* 8:e8584. doi: [10.7717/peerj.8584](https://doi.org/10.7717/peerj.8584).
- Pons J, Bauzá-Ribot MM, Jaume D, Juan C. 2014. Next-generation sequencing, phylogenetic signal and comparative mitogenomic analyses in Metacrangonyctidae (Amphipoda: Crustacea). *BMC Genomics.* 15(1):566. doi: [10.1186/1471-2164-15-566](https://doi.org/10.1186/1471-2164-15-566).
- Prijbelski A, Antipov D, Meleshko D, Lapidus A, Korobeynikov A. 2020. Using SPAdes de novo assembler. *Curr Protoc Bioinformatics.* 70(1): e102. doi: [10.1002/cpbi.102](https://doi.org/10.1002/cpbi.102).
- Sars GO. 1900. Crustacea. Scientific Results of the Norwegian North Polar Expedition 1893–1896. 1:1–141.
- Smith SI. 1882. Nomenclator Zoologicus. An alphabetical list of all generic names that have been employed by naturalists for recent and fossil animals from the earliest times to the close of the year 1879. In 2 parts: 1. Supplemental list. II. Universal index. *BullUS Natl Museum.* (19). i–xxi, 1–376, 1–340. doi: [10.5479/si.03629236.19.i](https://doi.org/10.5479/si.03629236.19.i).
- Stamatakis A. 2014. RAxML version 8: a tool for phylogenetic analysis and post-analysis of large phylogenetics. *Bioinformatics.* 30(9):1312–1313. doi: [10.1093/bioinformatics/btu033](https://doi.org/10.1093/bioinformatics/btu033).
- Stebbing TRR. 1888. Report on the Amphipoda collected by H.M.S challenger during the years 1873–1876. *Zoology.* 29:1–212.
- WoRMS Editorial Board. 2022. *World Register of Marine Species.* doi: [10.14284/170](https://doi.org/10.14284/170).
- Yoo K II. 1970. On the distribution of the pelagic amphipod, *Cyphocaris challengerii* (Gammaridea: Lysianassidae) in the western North Pacific. *Korean J Zool.* 13(3):94–100. <https://koreascience.kr/article/JAKO197011919884679.page>.