

RESEARCH ARTICLE OPEN ACCESS

Ocean Acidification: Another Planetary Boundary Crossed

Helen S. Findlay¹  | Richard A. Feely² | Li-Qing Jiang^{3,4} | Greg Pelletier⁵ | Nina Bednaršek^{6,7}

¹Plymouth Marine Laboratory, Plymouth, UK | ²NOAA/OAR Pacific Marine Environmental Laboratory, Seattle, WA, USA | ³Cooperative Institute for Satellite Earth System Studies, Earth System Science Interdisciplinary Center, University of Maryland, College Park, Maryland, USA | ⁴NOAA/NESDIS, National Centers for Environmental Information, Silver Spring, Maryland, USA | ⁵Retired From Washington State Department of Ecology, Olympia, WA, USA | ⁶Cooperative Institute for Marine Ecosystem and Resources Studies, Oregon State University, Newport, Oregon, USA | ⁷Jožef Stefan Institut, Ljubljana, Slovenia

Correspondence: Helen S. Findlay (hefi@pml.ac.uk)

Received: 23 December 2024 | **Revised:** 14 April 2025 | **Accepted:** 14 April 2025

Funding: This work was supported by European Space Agency, AO/1-10757/21/I-DT. Natural Environment Research Council, NE/X006271/1. NOAA's Global Ocean Monitoring and Observing and Ocean Acidification Programs, GOMO Fund Reference Number 100018302 and OAP NRDD. Slovene Research Agency, N1-0359. Climate Program Office, NA19NES4320002, NA210AR4310251.

Keywords: biodiversity | carbonate chemistry | climate change | conservation | marine | ocean acidification | planetary boundary

ABSTRACT

Ocean acidification has been identified in the Planetary Boundary Framework as a planetary process approaching a boundary that could lead to unacceptable environmental change. Using revised estimates of pre-industrial aragonite saturation state, state-of-the-art data-model products, including uncertainties and assessing impact on ecological indicators, we improve upon the ocean acidification planetary boundary assessment and demonstrate that by 2020, the average global ocean conditions had already crossed into the uncertainty range of the ocean acidification boundary. This analysis was further extended to the subsurface ocean, revealing that up to 60% of the global subsurface ocean (down to 200 m) had crossed that boundary, compared to over 40% of the global surface ocean. These changes result in significant declines in suitable habitats for important calcifying species, including 43% reduction in habitat for tropical and subtropical coral reefs, up to 61% for polar pteropods, and 13% for coastal bivalves. By including these additional considerations, we suggest a revised boundary of 10% reduction from pre-industrial conditions more adequately prevents risk to marine ecosystems and their services; a benchmark which was surpassed by year 2000 across the entire surface ocean.

1 | Introduction

First proposed in 2009 (Rockström et al. 2009), the planetary boundaries assessment defines nine large scale Earth-system processes and associated boundaries that, if crossed, could generate unacceptable environmental change. These nine processes are: climate change, rate of biodiversity loss (terrestrial and marine), interference with the nitrogen and phosphorus cycles, stratospheric ozone depletion, ocean acidification, global freshwater use, change in land use, chemical pollution and atmospheric aerosol loading. Three boundaries had been crossed in 2009 (Rockström et al. 2009), increasing to four in 2015

(Steffen et al. 2015) and six in 2023 (Richardson et al. 2023). Ocean acidification (OA) was assessed as not yet having crossed the boundary, but lies at the margin of the safe operating space (Richardson et al. 2023). This remained the same conclusion in the Planetary Health Check published in 2024 (<https://www.planetaryhealthcheck.org/>).

OA is the term given to the long-term shift of marine carbonate chemistry resulting primarily from the uptake of carbon dioxide (CO₂) by the oceans (Caldiera and Wickett 2003; Orr et al. 2005), leading to an increase in ocean acidity and a decrease in carbonate ion (CO₃²⁻) concentration. This reduction in CO₃²⁻ influences

This is an open access article under the terms of the [Creative Commons Attribution](https://creativecommons.org/licenses/by/4.0/) License, which permits use, distribution and reproduction in any medium, provided the original work is properly cited.

© 2025 The Author(s). *Global Change Biology* published by John Wiley & Sons Ltd. This article has been contributed to by U.S. Government employees and their work is in the public domain in the USA.

calcium carbonate (CaCO_3) mineral formation and dissolution (R. A. Feely et al. 2004, 2008; Gangstø et al. 2008). As CO_3^{2-} concentration decreases, seawater CaCO_3 saturation state (Ω) decreases, which can lead to dissolution. Conversely, when CO_3^{2-} is plentiful, seawater is supersaturated and CaCO_3 mineral formation is facilitated. Abiotic precipitation of CaCO_3 minerals only occurs at very high Ω levels (Chave and Suess 1970), with the majority of CaCO_3 in the oceans formed through biogenic processes. CaCO_3 exists in several mineral phases, most often including aragonite and calcite, with aragonite being approximately 50% more soluble than calcite (Mucci 1983).

OA can severely affect marine organisms through its direct impact on physiology, growth, survival and reproduction (Doney et al. 2020; Findlay and Turley 2021). Furthermore, marine calcifiers that produce CaCO_3 shells or skeletons, including some corals, crustaceans, molluscs, phytoplankton, zooplankton and algae, are at additional indirect risk from OA as decreasing Ω makes it more energetically costly to build or maintain their CaCO_3 structures, which, when exposed to low Ω (usually undersaturated) conditions, can be subjected to enhanced dissolution (R. A. Feely et al. 2016; Findlay et al. 2011; Leung et al. 2020).

Ocean Ω conditions vary significantly across the globe, with levels in tropical regions being more than twice as high as those in polar regions (Feely et al. 2023; Jiang et al. 2015). These regional and seasonal gradients exist due to temperature-driven CO_2 solubility, enabling colder high-latitude waters to store more CO_2 , along with other factors including circulation of carbon away from the surface into deeper waters, mineral inputs from land and freshwater dilution (Jiang et al. 2019; Orr et al. 2005). Marine life is exposed to such regionally varying gradients to which it has evolutionarily adapted (Vargas et al. 2022), resulting in a wide variability of observed responses to OA found in laboratory experiments. However, the envelope of the overall conditions experienced by organisms is also changing due to OA, which can make scaling up from single-species experiments to ecosystem predictions more complicated. This is particularly true when we consider the other challenges of scaling, including incubation effects, lack of natural variability and lack of adaptation and/or acclimation.

Understanding the status, trends and biological impacts (or implications) of OA at global and regional levels is therefore paramount to determining a safe operating space at a planetary scale in which fully operational ecosystems and habitats are retained. Determining this safe space requires more than just considering chemical change. Crossing a boundary means increasing risk that marine ecosystems will be impacted by unfavourable conditions, resulting in altered ecosystem function, and ultimately cause severe implications for the societies that vitally depend on these ecosystems for a variety of provisional, cultural and climate related goods and services (Pörtner et al. 2019).

Aragonite saturation state (Ω_{Arag}) has emerged as a key indicator for OA, reflecting the precipitation/dissolution tendencies of CaCO_3 , as well as its association with marine calcifiers. Consequently, the global mean surface Ω_{Arag} was chosen as the OA indicator in the planetary boundary assessments (Rockström et al. 2009). The boundary was set at 80% of the pre-industrial Ω_{Arag} value, that is, a 20% reduction from the pre-industrial

surface ocean average. This level was chosen based on two criteria: first to keep high-latitude surface waters above Ω_{Arag} undersaturation; and second, to ensure adequate conditions for most warm-water coral reef systems (Rockström et al. 2009).

In the planetary boundaries framework (Richardson et al. 2023; Rockström et al. 2009; Steffen et al. 2015), the OA boundary is relatively unrefined compared to other planetary processes, which often incorporate elements of uncertainty and/or regional complexity that influences the planetary functioning. Indeed five of the nine boundaries were developed in this way during the second assessment (Steffen et al. 2015) in recognition that ‘changes in control variables at the subglobal level can influence functioning at the Earth system level, which indicates the need to define subglobal boundaries that are compatible with the global-level boundary definition’. For example, the ‘freshwater change process’ uses the upper limit of the pre-industrial variability as a precautionary approach, acknowledging the uncertainties related to both data and exact boundary position. While the ‘biogeochemical flows process’ has both a global and regional boundary, and the ‘land system change process’ has a global boundary as well as specific biomes boundaries (Richardson et al. 2023). In contrast, the OA boundary uses a single pre-industrial value for Ω_{Arag} with no associated uncertainties, nor any consideration of the regional differences in manifestation of OA and the regional contribution to global ocean health and planetary functioning. This is despite Steffen et al. (2015) acknowledging that Ω_{Arag} is spatially heterogeneous, and that the criteria for defining the boundary are related to regions of the global ocean (i.e., polar waters and sub-tropical corals), which are changing at different rates (Feely et al. 2023; Feely et al. 2024; Ma et al. 2023).

In addition to regional changes at the surface, recent research indicates that large carbonate system changes have been occurring in the subsurface (i.e., below the top 10m routinely measured using moorings, ships-of-opportunities and remote sensing), where combined anthropogenic CO_2 uptake and local respiration of organic matter interact to reduce Ω_{Arag} and pH and combine with subsurface OA-related change (Fassbender et al. 2023; Feely et al. 2024; Harris et al. 2023; Müller and Gruber 2024). Furthermore, there is also higher frequency occurrence of subsurface compound events (marine heatwaves, decreasing DO, pH and Ω_{Arag}) that synergistically impact ocean health (Gruber et al. 2021; Hauri et al. 2024).

Establishing an OA boundary that reduces the risks of significant impact and protects or sustains key marine species and ecosystems improves on a boundary that is simply defined by a chemical threshold (i.e., $\Omega_{\text{Arag}} = 1$). The planetary boundaries framework initially addressed this for OA by considering the threshold of Ω_{Arag} for marginal growth of warm-water coral reefs (Rockström et al. 2009). However, over the past few years, research into thresholds and indicators has developed and expanded, whereby biological impairment against changing carbonate chemistry (OA) for multiple key functional groups has been assessed through the threshold implementation (e.g., Bednaršek et al. 2019). Including additional biological indicators in the boundary assessment is especially valid given some species are found to be impacted under OA conditions in the ocean today (e.g., pteropods (Bednaršek et al. 2021; Bednaršek

et al. 2012b), decapod crab larvae (Bednaršek et al. 2020), gastropods (León et al. 2020) and corals (Manzello 2010)).

Using the latest observations, modelling results and biological assessments, we explore whether setting the boundary at 20% reduction from pre-industrial conditions provides an adequately safe limit with respect to the consequences of OA. First, we examine the latest global surface conditions in comparison to the assessment by Richardson et al. (2023), specifically using the state-of-art model-data products, and importantly including uncertainties in both the boundary and the present-day value. We also evaluate regional changes to better assess the two criteria (polar oceans and tropical corals) originally used to define the OA boundary. Next, we use new subsurface data-model products to consider how the subsurface ocean has changed to date to acknowledge the vertical spatial heterogeneity found in the oceans. Finally, we assess these changing conditions against additional examples of OA sensitive species that serve as biological indicators, to determine what level could ultimately be considered safe for marine ecosystems and planetary functioning, including food security and carbon sequestration.

2 | Materials and Methods

2.1 | Models for Global and Regional Assessment

2.1.1 | Surface Model Data

Model simulations for the surface ocean are described by Jiang et al. (2023). They are available from (Jiang et al. 2022) as gridded products in NetCDF at the National Oceanic and Atmospheric Administration (NOAA) National Centers for Environmental Information. Data used in this analysis were the multi-model ensemble medians and their associated standard deviations (Tables S1 and S2; [Jiang et al. 2022]).

2.1.2 | Subsurface Model Data

A new model-data fusion product covering 10 global subsurface OA indicators at the standardised depth levels of 50m, 100m and 200m were produced (Jiang 2024) by following the same approach as Jiang et al. (2023). These indicators include: fugacity of carbon dioxide, pH on total scale, total hydrogen ion concentration, free hydrogen ion concentration, carbonate ion concentration, aragonite saturation state, calcite saturation state, Revelle Factor, total dissolved inorganic carbon content and total alkalinity content. This product presents the evolution of these OA indicators on global surface and subsurface ocean grids with a resolution of $1^\circ \times 1^\circ$. It is presented as decadal averages for each 10-year period, starting from pre-industrial conditions in 1750, through historical conditions from 1850 to 2010, and extending to four future scenarios based on Shared Socioeconomic Pathways (SSPs) from 2020 to 2100. The SSPs considered are SSP1-2.6, SSP2-4.5, SSP3-7.0 and SSP5-8.5. Results for this product were extracted from 14 Earth System Models (ESMs) from the Coupled Model Intercomparison Project Phase 6 (CMIP6) and a gridded data product created by Lauvset et al. (2016). Data used in this analysis were the multi-model ensemble medians

and their associated standard deviations (Tables S1 and S2; [Jiang 2024]).

2.1.3 | Choice of Pre-Industrial Value and Consideration of Uncertainties

The original OA planetary boundary used a pre-industrial Ω_{Arag} value of 3.44, with no associated reference, however we believe this value originates from CMIP3 models, as referenced in the Royal Society report in 2005 (Raven et al. 2005), using a pre-industrial atmospheric CO_2 concentration of 280 ppm, which can be traced back to Caldiera and Wickett (2003). Given that atmospheric CO_2 is used to force the ocean carbon dynamics in most ESMs, and most ESMs start their historical simulations at model year 1850, the choice of CO_2 concentration is important.

Pre-industrial CO_2 concentration is derived from ice-core records, which date back from present day to about 1000AD. Etheridge et al. (1996) suggest that the pre-industrial CO_2 mixing ratio over that period is in the range of 275–284 ppm, with an uncertainty in the mixing ratios of 1.2 ppm. They also highlight ‘...Natural CO_2 variations of this magnitude make it inappropriate to refer to a single preindustrial CO_2 level’ (Etheridge et al. 1996). More recently the IPCC provided values for pre-industrial CO_2 within a range of 278.3 ± 2.9 ppm in 1750 and 285.5 ± 2.1 ppm in 1850 (Intergovernmental Panel on Climate Change (IPCC) 2023). For this reason, we take this range of CO_2 concentrations as the pre-industrial conditions, together with the CO_2 uncertainties (1.2 ppm) to add an uncertainty range to the boundary rather than using one single value.

Here we use Jiang et al. (2023)'s approximation of OA indicators from 1750 and 1850, given that they are based on ice core derived atmospheric CO_2 data from 1752 (276.39 ppm) and 1852 (288.57 ppm) (Etheridge et al. 1996; MacFarling Meure et al. 2006), and therefore represent the observed pre-industrial CO_2 range. Consequently, the range for pre-industrial Ω_{Arag} is 3.44 to 3.57. Using average pre-industrial conditions of ocean temperature, salinity and alkalinity for those dates (Table S4), we propagate the 1.2 ppm uncertainty in CO_2 measurements to get an additional uncertainty term for Ω_{Arag} for the pre-industrial boundary, which is 0.18 for the average global ocean, but ranges from 0.09 to 0.21 across the ocean regions. The percentage change between present day and pre-industrial conditions and the associated uncertainty can then be calculated (section 2.1.4.). Where one single boundary value is required, for example, to calculate the change in areal extent that has crossed a specific level, the upper pre-industrial Ω_{Arag} value ($\Omega_{\text{Arag}} = 3.57$) is used as a precautionary level that acknowledges these uncertainties.

2.1.4 | Calculating Percentage Change and Propagated Errors

The percentage change in Ω_{Arag} was calculated between pre-industrial and present-day (2020 decade) from the multi-model medians (\bar{x} and \bar{y}) and their associated standard deviations (σ_x and σ_y) using the following equations:

$$\text{Percentage change} = \left(1 - \frac{\bar{y}}{\bar{x}}\right) \times 100 \quad (1)$$

The formula for error propagation of the ratio $R = \frac{\bar{y}}{\bar{x}}$ is:

$$\left(\frac{\sigma_R}{R}\right)^2 = \left(\frac{\sigma_x}{\bar{x}}\right)^2 + \left(\frac{\sigma_y}{\bar{y}}\right)^2 \quad (2)$$

Rearranged to:

$$\sigma_R = \frac{\bar{y}}{\bar{x}} \sqrt{\left(\frac{\sigma_x}{\bar{x}}\right)^2 + \left(\frac{\sigma_y}{\bar{y}}\right)^2} \quad (3)$$

The error in the percentage change is then: $\sigma_R \times 100$.

The boundary errors were calculated using the same equations, assuming $\bar{y} = 0.8\bar{x}$ and, using the propagated pre-industrial aragonite standard deviations for the boundary, σ_y .

2.2 | Biological Indicator Assessment of OA Sensitive Species

Biological thresholds are defined as the inflection points beyond which detrimental biological effects are expected to begin to occur and can indicate either acute or chronic implication for the species health once the conditions have been exceeded (IOC-UNESCO 2022). Thresholds are indispensable tools for assessing environmental conditions that may exacerbate risks for sensitive marine species and their habitats. Thresholds are not solely about achieving statistical significance, they are also about capturing ecologically meaningful responses. Such thresholds can successfully inform management and policy decisions, serving as critical communication tools for stakeholders. The drawback of such thresholds is that they do not encompass all the complexity of local adaptation and modulation introduced by simultaneous change in multiple environmental conditions (Boyd et al. 2018).

Here we combine the use of thresholds that have been determined either by strong scientific evidence from laboratory or field impacts studies, or from studies using meta-analysis and expert assessment (section 2.2.1), with an environmental envelope assessment for each species (section 2.2.3) to determine a level that once crossed represents marginal conditions for that organism.

2.2.1 | Selection of Existing Thresholds

For the selection of thresholds it is important to understand the certainty around them. Where possible, thresholds are characterised by confidence scores, with metrics taken from the IPCC confidence model (Mastrandrea et al. 2010), and determined based on fact agreement and evidence. The confidence score ultimately delineates the level of (un)certainty around the threshold implementation, with high confidence thresholds having high certainty of the interpretation of species sensitivity and as such, a recommendation that only thresholds with medium or high certainty are to be implemented. However, in many cases when the thresholds did not undergo expert consensus, such

threshold studies have not necessarily (yet) assigned confidence scores nor have a level of uncertainty associated with them. In these cases, thresholds are considered where they have been used more widely in the scientific and policy-management communities (e.g., Barton et al. 2015; Ward et al. 2022).

Evaluating and using threshold exceedance in this study, the thresholds are taken as guidance of potential impact or vulnerability rather than absolute limit of a biological process across the global scale, reflecting a precautionary principle and recognising that nuances at the population level may alter the sensitivity of species under certain conditions. We focus on three groups that have known sensitivity to OA, are socially and economically important, and have global importance for planetary functioning: warm-water corals, pteropods, bivalves (oysters and mussels).

We recognise that the specific driver of impacts between carbonate chemistry (OA) and the biological condition and/or biogeochemical processes are often not known, are co-related, or a result of an indirect response. For instance, it could be pH or CO₂, rather than Ω_{Arag} that is the main driver of impact. Due to the complexity involved in disentangling the primary drivers of the response, as well as converting between carbonate chemistry parameters (especially when not all necessary data is available within publications to do this), we present thresholds here as a function of Ω_{Arag} (Waldbusser et al. 2015) to align the chemical indicator and past planetary boundary assessments (Richardson et al. 2023).

Warm-water coral reefs are a key indicator as they represent an invaluable ocean ecosystem. They provide habitat for a huge amount of biodiversity, hosting an estimated excess of 3 million species; they support livelihoods through tourism and fishing, providing food for over 1 billion people and a source of about 25% of the world's fish catch; and they provide coastal protection against storms, flooding and land erosion for more than 275 million people that live near them (Spalding and Brown 2015). The threshold for warm-water coral reefs that was already included in the OA planetary boundary assessment (Rockström et al. 2009) is used here as well. The threshold of $\Omega_{\text{Arag}} = 3.5$ is based on the definition of the onset of marginal conditions for warm-water coral reefs defined by Guinotte et al. (2003), derived from an environmental envelope style analysis (Kleypas et al. 1999).

Pteropods are considered key species in the polar regions with important ecosystem (Bernard and Froneman 2009) and biogeochemical significance, including making up a large component of the carbon pump (Anglada-Ortiz et al. 2021; Manno et al. 2010), and are recognised as important OA indicators (Bednaršek et al. 2014). Present-day levels of Ω_{Arag} in high latitudes are already causing severe pteropod shell dissolution (Bednaršek et al. 2023). The threshold for pteropods represent mild and severe shell dissolution, which serves as an early warning (mild: $\Omega_{\text{Arag}} = 1.5$) and an indicator of additional physiological impairments (severe: $\Omega_{\text{Arag}} = 1.2$). These shell dissolution thresholds both have high confidence scores placed on them (Bednaršek et al. 2019), and values are supported by multiple field and experimental studies both in the polar regions and the California Current Ecosystem (Bednaršek et al. 2014, 2012b).

Bivalves are included here as key indicator organisms that are critical components of coastal ecosystems. They provide a food and protein source, with bivalve production worth 20.6 billion dollars per year worldwide; they improve water quality by filtering particles, helping to balance nutrients and phytoplankton growth; they create habitats that are important nursery grounds, but also help to stabilise shorelines; finally bivalves are also important for a number of other key industries such as use in building materials, medicinal use and pearl production (Filipa Mesquita et al. 2024). OA impacts on various bivalve species have been investigated although no one specific threshold has yet been determined. A large fraction of bivalve impact studies have been conducted on larval life stages, with the onset of impacts occurring at Ω_{Arag} levels between 1.3 and 1.9. The most applied and validated impact is on the Pacific oyster (*Magallana gigas*), which has been well studied because of the impact of OA on larval production off the west coast of North America. Larval production was shown to have a negative relationship to Ω_{Arag} (Barton et al. 2012, 2015). Using this relationship, we determined the Ω_{Arag} value at which there is zero relative production and used this as a threshold ($\Omega_{\text{Arag}} = 1.75$) beyond which relative production is minimal or does not occur. Other bivalve species, from laboratory studies, have possible sublethal thresholds related to growth and calcification (e.g., the Olympia oyster (*Ostrea lurida*) has onset of impacts at Ω_{Arag} of 1.4 (Hettinger et al. 2012); the Eastern oyster (*Crassostrea virginica*) has onset of impacts at Ω_{Arag} of 1.83 (Gobler and Talmage 2014); and the blue mussel (*Mytilus californianus*) has onset of impacts at Ω_{Arag} of 1.8 (Gaylord et al. 2011)).

2.2.2 | Geographic Distribution and Associated Environmental Envelopes

The IPBES secretariat defines an environmental envelope of a species as the set of environments within which it is believed that the species can persist. These envelopes are used in environmental niche modelling by matching habitat usage of species against local environmental conditions to determine the relative suitability of specific geographic areas for a given species (e.g., AquaMaps, (Ready et al. 2010)). The Ocean Biodiversity Information System (OBIS) database was used to gather occurrence data for each of the chosen species: *Magallana gigas* ((OBIS 2023b) and Table S5); *Mytilus californianus* ((OBIS 2023c) and Table S6) and *Limacina helicina* ((OBIS 2023a) and Table S7). The warm-water coral reef occurrence data was from UN Environment Programme World Conservation Monitoring Centre (UNEP-WCMC, WorldFish Centre, WRI, TNC 2021). Data were downloaded and then sorted. Importantly noting that these datasets do not imply absence of a given species at other locations but simply represent where species have actually been observed and can be used for quantitative purposes. A secondary screening was then conducted to sanity check the data and remove duplicate records based on latitude, longitude and date of each observation. The location values were then used to extract environmental data (temperature, salinity and carbonate chemistry parameters) from the OceanSODA-ETHZv1 dataset (Gregor and Gruber 2020). The OceanSODA-ETHZv1.2023 dataset is a product that provides data on a $1^\circ \times 1^\circ$ spatial and monthly

temporal resolution between 1982 and 2022 (Gregor and Gruber 2021). Noting that only surface values are available from this dataset. Overall global environmental envelopes were generated using the nearest location match between the occurrence dataset and the OceanSODA-ETHZv1.2023 dataset for each species. Statistics were generated from the extracted data (Tables S14–S17) and histograms (Figure S7) were generated. Analysis was conducted in R v4.1.3.

2.2.3 | Cross Validation of Thresholds and Environmental Envelopes

The aim of using a combined assessment is to cross-validate these values to derive the most comprehensive interpretation of response, and hence indicator, to OA as possible. The combination of the environmental niche modelling with the threshold approach can support how information on physiological responses, derived primarily from laboratory experiments, can relate to the occurrence distribution of a species. This can give insights into when the conditions below the physiological thresholds carry over into the population absences. Such an approach is relatively novel but has important implications to detect early warning responses beyond which we would expect population level impacts to occur (i.e., when physiological thresholds overlap with the higher absence values from niche modelling).

Using the full datasets available for both occurrence and environmental data, we propose to use the 10th percentile of the environmental envelope distribution as the corresponding validation of the laboratory-based thresholds. We use the 10th percentile to provide a standardised assessment of what can be considered extreme exposure, building on the definitions used in atmospheric and marine heatwaves and OA extremes (which use the 90th percentile for heatwaves and 10th percentile of OA (Gruber et al. 2021; Hobday et al. 2016)). The 10th percentile occurs at $\Omega_{\text{Arag}} = 3.5$ for warm-water corals, $\Omega_{\text{Arag}} = 1.1$ for pteropods and $\Omega_{\text{Arag}} = 1.8$ and $\Omega_{\text{Arag}} = 1.9$ for the two bivalve species investigated here (*Magallana gigas* and *Mytilus californicus*, respectively) (Tables S14–S17, Figure S7).

This 10th percentile value, combined with the assessment of the thresholds in the literature, increases the confidence in the validity of these values as representing the vital biological thresholds beyond which detrimental biological effects are expected to begin to occur (IOC-UNESCO 2022). Hereon, we use the combined assessment (considered to be the median of all the values (threshold and environmental envelopes) derived for each group) to give indicator values as: $\Omega_{\text{Arag}} = 3.5$ as marginal conditions for warm-water corals, $\Omega_{\text{Arag}} = 1.2$ as marginal conditions for pteropods (but also include $\Omega_{\text{Arag}} = 1.5$ as the mild level), and $\Omega_{\text{Arag}} = 1.8$ as marginal conditions for bivalves.

2.2.4 | Application of Marginal Conditions to Biogeochemical Observational Data

Several diagnostics were then calculated using the biological assessment of the marginal conditions related to Ω_{Arag} :

- The percentage of ocean area that has marginal conditions:
 - In the pre-industrial era (using upper level as precautionary value)
 - In the present day (2020 AD)
 - When applying a 20% reduction in Ω_{Arag} from pre-industrial values
 - When applying a 10% reduction in Ω_{Arag} from pre-industrial values
- The change in proportion of area that is under marginal conditions between pre-industrial and present day (2020 AD)
- The percentage reduction required from pre-industrial before the threshold of marginal conditions was reached on average

These diagnostics were applied to each of the indicator groups using the model results for global surface waters and then the region and depth specific data using the subsurface model outputs.

From assessment of the literature and maps of each species occurrence, the regions in which the chosen indicator groups are most abundant and/or has a relevant role in the ecosystem were chosen. For warm-water corals, they are found in the low latitudes between 40° S to 40° N at depths of 0–25 m. For pteropods, we chose two geographic regions, the polar regions (Arctic defined by the area north of 65° N, Southern Ocean defined by the area south of 45° S) and the California Current Ecosystem (defined by the geographic box of 47.5° N to 21.5° N, 108.5° W to 132.3° W (<https://www.marineregions.org/gazetteer.php?p=details&id=8549>), and restricting to within 300 km from the shore), at depths of 0 to 200 m (Akiha et al. 2017; Bednaršek et al. 2012a; Hunt et al. 2008; Kobayashi 1974; Zamelczyk et al. 2021). For bivalves, we chose to use the global coastal oceans (defined as within 300 km from the shore), at depths of 0–25 m (Gabaev 2015; Knights et al. 2006; Weinstock et al. 2018).

The area-weighted mean and standard deviations of Ω_{Arag} across model grid cells within each region of interest at each depth layer (0 m, 25 m, 50 m, 100 m and 200 m) were calculated with MATLAB. The Ω_{Arag} at the 25 m depth layer was estimated as the arithmetic mean of the 0 m and 50 m layers. The area-weighted covariance of Ω_{Arag} between layers was calculated with MATLAB using `weightedcorr`s (Pozzi et al. 2012). Uncertainties in depth-integrated Ω_{Arag} accounting for covariance between layers were propagated using the delta method as implemented in the Python uncertainties library. The percentage of ocean surface area that crossed each biological threshold was calculated as the sum of the areas of all 1° × 1° model grid cells crossing the threshold divided by the total surface area in each region using MATLAB. Observed distributions of each indicator group were overlaid using data from OBIS for all species except warm-water corals, which we took from UNEP-WCMC (section 2.2.2). Figures S3–S6 show maps of the threshold application of pre-industrial conditions, year 2020 conditions, 10% and 20% reductions from pre-industrial conditions, for each of the indicator groups described above, and detailed in Tables S8 and S9. Outputs for the pteropod threshold results at each individual depth layer (0, 50, 100 and 200 m) are also shown in Tables S10–S13.

3 | Results

3.1 | Global Surface Ω_{Arag} as a Planetary Boundary

Richardson et al. (2023) estimated year 2022 global average Ω_{Arag} (= 2.8) from the climatological average value of 3.03 in year 2000 and the corresponding global decrease of 0.1 per decade given by Jiang et al. (2015). This calculation resulted in the conclusion that there had been a 19% decrease from pre-industrial conditions (using the single pre-industrial [1850 AD] value of 3.44) and hence, that the boundary (of 20% reduction) had not been crossed. The most recent synthesis of the global surface ocean in situ and model data suggests that present day global mean Ω_{Arag} is 2.90 ± 0.06 . These updated values would suggest that OA is slightly further from crossing the boundary than Richardson et al. (2023) proposed (2.8 [19% reduction] vs. 2.90 [16% reduction]). However, incorporating uncertainty around the pre-industrial value, and hence the boundary, gives a pre-industrial Ω_{Arag} value of 3.51 ± 0.065 [range 3.44 to 3.57], resulting in a boundary of Ω_{Arag} value of 2.80 ± 0.05 (Table S3). These uncertainties can be propagated through to calculate the error in the percentage change over time. Including this uncertainty puts the current global average surface OA level at $17.3\% \pm 5.0\%$, which is below the boundary average, but falls well within the new boundary uncertainties ($20\% \pm 5.3\%$) (Table 1, Figure 1a).

In addition to model ensemble differences, regional differences in absolute Ω_{Arag} as well as the rate of Ω_{Arag} decline can contribute to variability around the average and should be accounted for. To further delineate these regional differences, we conducted a regional scale evaluation which transforms and improves global boundary estimations. Using regional data, we evaluated whether the major oceanic basins have, respectively, crossed the 20% boundary (Table 1, Figure 1a). Average surface values show that four out of seven ocean basins have crossed the boundary: The Arctic ($26.0\% \pm 15.2\%$ reduction), the north Pacific ($22.1\% \pm 6.4\%$ reduction), the Southern Ocean ($21.8\% \pm 4.6\%$ reduction) and the north Atlantic ($20.1\% \pm 6.5\%$ reduction). However, all basins have crossed the lower limit of the boundary uncertainties (Table 1, Figure 1a).

Using the upper pre-industrial value as a precautionary value, the percentage (multi-model median \pm SD) of surface area that has crossed the 20% boundary in 2020 (compared to 1750) was over $40\% \pm 9.7\%$ of the global ocean (Figure 1b), and was $86.8\% \pm 15.1\%$ of the Southern Ocean, $83.6\% \pm 18.6\%$ of the north Pacific, $78.2\% \pm 11.1\%$ of the Arctic, $63.1\% \pm 22.1\%$ of the north Atlantic, $22.9\% \pm 12.4\%$ of the central Pacific, $19.7\% \pm 10.7\%$ of the Indian ocean and $15.1\% \pm 11.5\%$ of the central Atlantic (Figure 1b).

3.1.1 | Preventing Polar Oceans From Reaching Undersaturation

The first criterion used for setting the OA planetary boundary (Rockström et al. 2009) was that global average conditions would be sufficient to keep polar waters from becoming undersaturated. While nearly all of the surface polar oceans have seen an Ω_{Arag} reduction of more than 20% compared to their

TABLE 1 | The percentage change between pre-industrial era (1750) and present day (2020) compared to the 20% boundary for each region, showing \pm errors in the percentage change as calculated by propagating the standard deviations (see methods).

| | % change between 1750 and 2020 \pm propagated error | | | | Boundary \pm propagated error | | | |
|------------|-------------------------------------------------------|---------------|---------------|---------------|---------------------------------|---------------|--------------|---------------|
| | 0m | 50m | 100m | 200m | 0m | 50m | 100m | 200m |
| Arctic | 26 \pm 15.2 | 25 \pm 11.3 | 25 \pm 10.0 | 20 \pm 9.5 | 20 \pm 13.0 | 20 \pm 10.0 | 20 \pm 9.4 | 20 \pm 8.5 |
| Pacific-N | 22 \pm 6.4 | 24 \pm 6.4 | 26 \pm 7.8 | 24 \pm 14.1 | 20 \pm 6.9 | 20 \pm 7.3 | 20 \pm 9.0 | 20 \pm 12.9 |
| Atlantic-N | 20 \pm 6.5 | 20 \pm 6.8 | 21 \pm 6.6 | 20 \pm 6.1 | 20 \pm 6.7 | 20 \pm 7.1 | 20 \pm 7.2 | 20 \pm 7.2 |
| Pacific-C | 17 \pm 4.1 | 17 \pm 4.5 | 18 \pm 5.7 | 21 \pm 11.9 | 20 \pm 5.8 | 20 \pm 6.0 | 20 \pm 6.8 | 20 \pm 9.0 |
| Atlantic-C | 16 \pm 3.3 | 17 \pm 3.6 | 18 \pm 5.3 | 19 \pm 9.9 | 20 \pm 5.6 | 20 \pm 5.7 | 20 \pm 6.7 | 20 \pm 8.7 |
| Indian | 17 \pm 3.2 | 17 \pm 3.8 | 20 \pm 5.6 | 21 \pm 10.3 | 20 \pm 5.5 | 20 \pm 5.8 | 20 \pm 7.1 | 20 \pm 8.8 |
| Southern | 22 \pm 4.6 | 21 \pm 4.7 | 22 \pm 5.2 | 20 \pm 5.6 | 20 \pm 6.0 | 20 \pm 5.9 | 20 \pm 6.5 | 20 \pm 7.4 |
| Global | 17 \pm 5.0 | 18 \pm 4.5 | 19 \pm 5.9 | 20 \pm 10.7 | 20 \pm 5.3 | 20 \pm 5.2 | 20 \pm 6.1 | 20 \pm 7.6 |

pre-industrial conditions, in terms of the annual average surface Ω_{Arag} value, the chemical threshold of 1 has not yet been crossed, that is, year 2020 Ω_{Arag} (multi-model median \pm SD) is 1.49 ± 0.14 and 1.77 ± 0.04 for the Arctic and Southern Ocean, respectively. Therefore, considering only the annual average surface value, the 20% boundary does indeed prevent the polar oceans from reaching undersaturation. However, observations and models show that some regions of both polar oceans experience periods of undersaturation seasonally, and in some cases, annually in their surface waters today (Cross et al. 2018; Qi et al. 2022; Terhaar et al. 2021).

The percentage of Arctic Ocean surface waters that are undersaturated with respect to Ω_{Arag} increased between pre-industrial conditions and 2020AD by four-fold (Figure 2). The model-data product suggests about $5\% \pm 0.2\%$ of the Arctic surface waters were undersaturated in pre-industrial times, with this value remaining relatively stable until the 1980s when it started to increase. In 1990s it was $\sim 7\% \pm 0.2\%$ and in 2020s it is about $21\% \pm 0.2\%$ (Figure 2). To better account for regional variability, which represents the conditions local marine organisms are exposed to, a boundary for the Arctic might be better defined by the proportion of surface ocean that is undersaturated, rather than using the absolute average surface value. For example, to keep 10% or less of the surface waters from undersaturation, the equivalent average global surface Ω_{Arag} value was passed in the late early 2000s, equating to an overall decrease of $14\% \pm 3.3\%$ from the global average pre-industrial Ω_{Arag} value. However, defining what proportion of undersaturation is within a safe margin for ecological consequences (i.e., 5%, 10%) is still subjective. Where possible, biological indicators should be included to help define safe boundaries, thus preventing biological impairment and ultimately protecting vulnerable marine ecosystems and their services.

3.1.2 | Preventing Tropical Coral Systems From Exposure to Marginal Conditions

The second criterion for setting the OA planetary boundary (Rockström et al. 2009), was that the global average conditions

would be sufficient to prevent warm-water coral systems from exposure to marginal conditions ($\Omega_{\text{Arag}} < 3.5$). Average surface Ω_{Arag} is now below 3.5 in all three low latitude (40°S to 40°N) regions which contain the highest abundance and diversity of the world's coral reefs: Year 2020 Ω_{Arag} (multi-model median \pm SD) is 3.36 ± 0.07 , 3.49 ± 0.04 and 3.45 ± 0.05 , for the central Pacific, central Atlantic and Indian Ocean, respectively. Hence, although the reduction in average Ω_{Arag} for each of these regions has not surpassed the 20% boundary when compared to pre-industrial conditions, the decline in Ω_{Arag} has reached levels that represent marginal conditions for coral reef growth. To prevent these low latitude regions (taken together) from falling below 3.5, global average Ω_{Arag} should not decline more than $15\% \pm 9\%$ from pre-industrial conditions (Table 2, Tables S8 and S9). Between 1750 and 2020, the percentage area with $\Omega_{\text{Arag}} < 3.5$ increased by 30% for the global surface ocean or 43% with respect to only the low latitude regions (Figure 3). Hence, although a large proportion of coral reefs remain in areas above 3.5 (Figure 3), the availability of suitable habitat is rapidly diminishing.

3.2 | Assessing the Subsurface Ocean as Part of the OA Boundary

To compare with the surface ocean, we assess the Ω_{Arag} reduction between pre-industrial and present day (2020AD) at three depth layers (50m, 100m and 200m), including propagated errors and then calculate the proportion of area that has crossed the 20% boundary for each layer (Figure 4, Figure S1). By 2020, global average Ω_{Arag} has decreased by $17.9\% \pm 4.5\%$, $19.3\% \pm 5.9\%$ and $19.7\% \pm 10.7\%$ at 50m, 100m and 200m, respectively. Assuming the upper pre-industrial value as a precautionary limit, this results in $40\% \pm 9.7\%$ (multi-model median \pm SD) of the surface ocean having crossed the 20% boundary by year 2020, which is about the same at 50m ($44\% \pm 10.8\%$ area), but increased to $58.3\% \pm 10.7\%$ area at 100m, and $61\% \pm 10.6\%$ area at 200m (Figure 4, Figure S1).

Regionally, while the largest change at the surface has been in the polar regions, the largest change at 100m and 200m has been

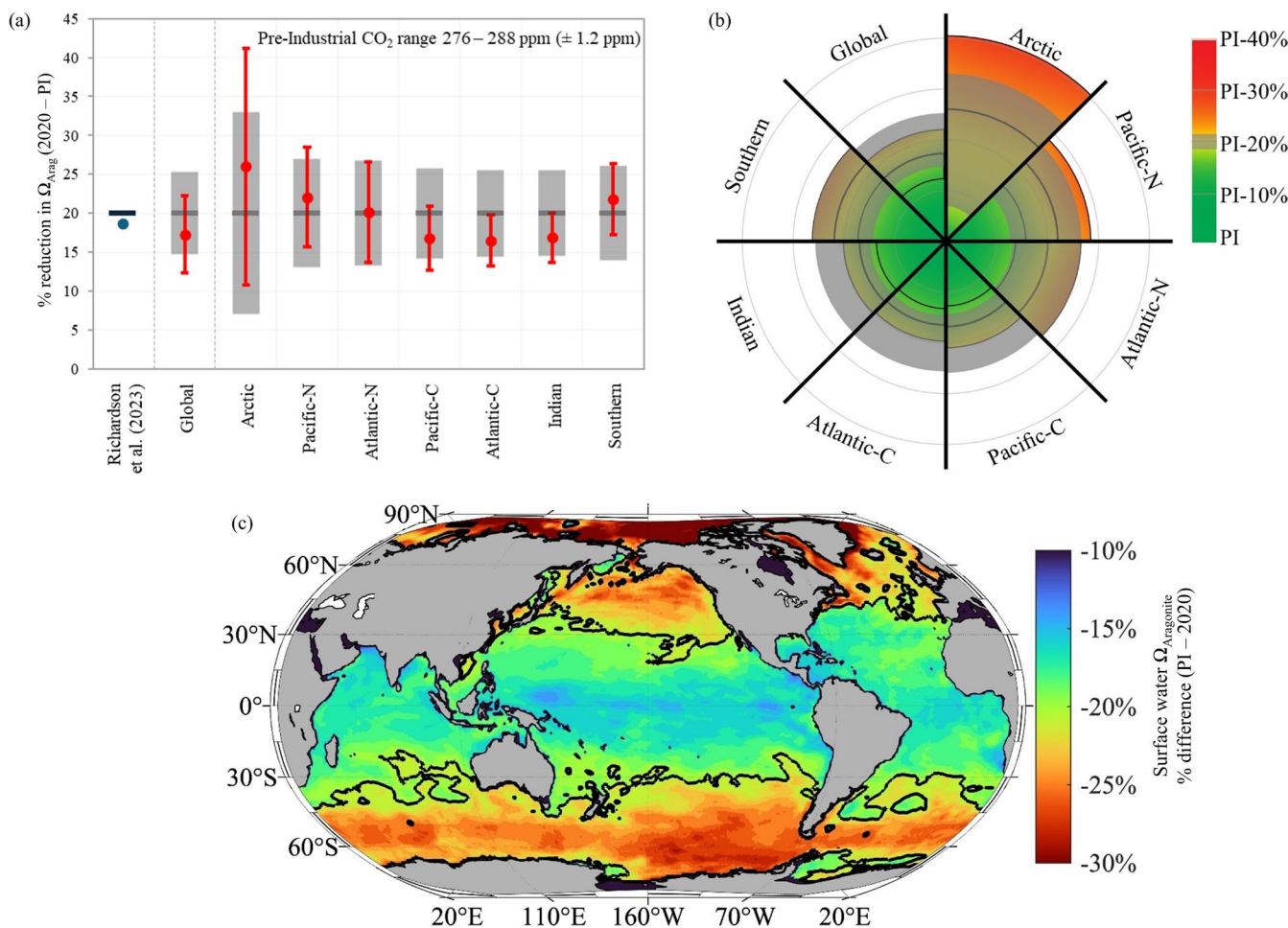


FIGURE 1 | Ocean Acidification planetary boundary. (a) Percentage (%) reduction between present day and pre-industrial aragonite saturation state for the surface global ocean and the seven ocean regions, also comparing to the Richardson et al. (2023) planetary boundary assessment (blue circle and blue line). The red circles represent the multi-model ensemble median with the associated propagated errors for the multi-model ensemble standard deviation and the pre-industrial uncertainties. The 20% boundary value is presented as the dark grey lines with their associated uncertainties shown by the light grey banding. Regions are defined as: Arctic Ocean (Arctic) region north of 65°N; north Pacific Ocean (Pacific-N) between 40°N and 65°N; north Atlantic Ocean (Atlantic-N) between 40°N and 65°N; central Pacific Ocean (Pacific-C) between 40°S and 40°N; central Atlantic Ocean (Atlantic-C) between 40°S and 40°N; Indian Ocean (Indian) between 40°S and 25°N; and the Southern Ocean (Southern) ocean south of 40°S. (b) Regional assessment of ocean acidification in year 2020, relative to the boundary of 20% reduction from pre-industrial aragonite saturation state, as in (a), with grey bars representing the boundary uncertainties, and colours depicting whether that boundary has been crossed (red) or not (green). (c) Map showing the percentage difference in surface Ω_{Arag} between pre-industrial (1750) and year 2020. The black contour line on the map represents a 20% reduction from pre-industrial values.

in the sub-polar and low latitude regions (Figure 4, Figure S1). Subsurface oceans host highly diverse and biodiversity-rich ecosystems, with few species living solely at the ocean surface. These significant subsurface changes indicate a much larger potential impact on marine ecosystems and the services they provide, including deep-water corals, (e.g., Müller and Gruber 2024; Perez et al. 2018), pelagic fisheries and marine carbon sequestration, which need to be considered when defining the safe operating space.

3.3 | Application of Biological Indicators

Here, we newly apply biological thresholds for the key indicator groups defined previously, that have known sensitivity to OA and are of global relevance (Table 2 & Table S8).

3.3.1 | Exceeding Marginal Conditions That Support Polar Food Webs

The percentage of ocean area in the polar regions, averaged across the pteropod depth habitat (0–200 m), that has crossed the thresholds for mild ($\Omega_{Arag} = 1.5$) and severe ($\Omega_{Arag} = 1.2$) shell dissolution, has increased by 61% and 16%, respectively, between pre-industrial and present day (2020AD) (Table 2, Tables S8 and S9). Furthermore, a larger percentage area of the polar oceans has exceeded the mild dissolution threshold of 1.5 by year 2020 compared to when considering the OA boundary of 20% reduction from pre-industrial Ω_{Arag} conditions (80% vs. 76%, respectively; Table 2, Tables S8 and S9). To remain above the mild and severe dissolution thresholds, average polar ocean Ω_{Arag} (0–200 m) conditions cannot decline more than $13\% \pm 16\%$ and $31\% \pm 12\%$, respectively, from the

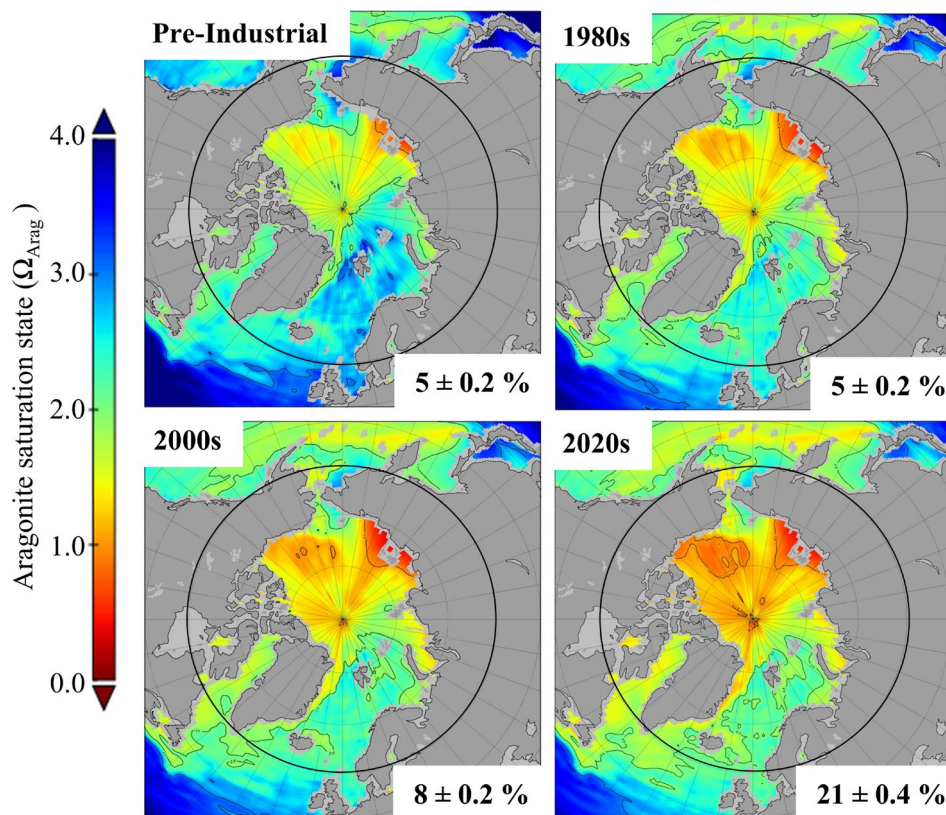


FIGURE 2 | Surface water aragonite saturation state (Ω_{Arag}) in the Arctic Ocean between 1750 and 2020. Maps show average conditions for the respective decade (marked at the top of each map). Numbers given at the bottom of each map shows the percentage (multi-model median \pm propagated error using multi-model SD) of the area between 60° and 90° N that has $\Omega_{\text{Arag}} < 1$. Maps are created using the hindcast data product from Jiang et al. (Jiang et al. 2022).

pre-industrial value, and even at this level there will still be some areas where the threshold is crossed (Table 2, Tables S8 and S9).

3.3.2 | Exceeding Marginal Conditions That Support Aquaculture and Shellfisheries

The bivalve threshold of marginal conditions was taken to be $\Omega_{\text{Arag}} < 1.8$. Using this value together with their distribution along the global coastal regions (set to < 300 km offshore and a depth range of 0–25 m), the area that has crossed into marginal conditions has increased by 12% between year 1750 and year 2020 (Table 2, Tables S8 and S9). A boundary set to 20% reduction from pre-industrial conditions results in 16% of the global coastal habitats being marginal for bivalves. To avoid moving into marginal conditions for bivalves, average coastal Ω_{Arag} (0–25 m) conditions cannot decline more than $51\% \pm 14\%$ from pre-industrial values.

3.4 | Halting the Trend and Maintaining a Safe Operating Space

The unequivocal driver of OA is the rapid uptake of anthropogenic CO_2 by the oceans. Model projections show that only by following the low emissions scenario (SSP1-2.6) can some parts of the global surface ocean be kept within the 20% boundary, and by the end of the century those areas begin to expand

again (Figure S2). This is in sharp contrast with the intermediate (SSP2-4.5) and high emissions scenarios (SSP3-7.0), which both lead to 100% of the global surface ocean crossing the 20% boundary. Indeed, by year 2100, nearly 25% of the global surface ocean will have Ω_{Arag} levels that are $> 40\%$ lower than pre-industrial conditions under emissions scenario SSP2-4.5, whereas nearly 95% of the surface ocean will have Ω_{Arag} conditions that are $> 40\%$ lower than pre-industrial levels under SSP3-7.0 (Figure S2).

4 | Discussion

This study significantly advances the work of Richardson et al. (2023) by conducting a more in-depth and refined analysis of the OA planetary boundary. It addresses limitations of previous assessments, incorporates updated scientific information, utilises additional biological indicators, and formally accounts for uncertainties. This leads to a revised and more accurate, ecologically sound definition of the OA planetary boundary. The main advancement lies in shifting from an assessment based primarily on the changing chemistry to a more holistic approach that considers uncertainties, regional variations, sub-surface impacts and the biological consequences of exceeding the boundary.

Taking into consideration the uncertainties from global model ensembles, regional variability and uncertainties associated

TABLE 2 | Biological indicators. For each organism group a value for aragonite saturation state is provided that expresses marginal conditions. For the relevant range of each organism (depth and region) the aragonite saturation state value is used to calculate the percentage (%) area that has passed into marginal conditions in: Pre-industrial (PI) conditions, 20% decline from pre-industrial (PI-20%), 10% decline from pre-industrial (PI-10%), and year 2020. Also provided is the difference ($\Delta\%$) in area between pre-industrial and year 2020 (i.e., expansion of area that has crossed the value), and the mean \pm SD (area-weighted and depth-integrated) aragonite saturation state reduction from the pre-industrial conditions that can be made before crossing the value.

| Species | Aragonite threshold value (ref.) | % area passed threshold, PI | % area passed threshold, PI-10% | % area passed threshold, PI-20% | % area passed threshold, year 2020 | $\Delta\%$ area passed threshold (1750–2020) | % reduction from PI before reaching threshold |
|-------------------------|-----------------------------------------------|-----------------------------|---------------------------------|---------------------------------|------------------------------------|----------------------------------------------|-----------------------------------------------|
| Bivalve ^{a,c} | 1.8 (Barton et al. 2012; Gaylord et al. 2011) | 6.4% | 10.9% | 15.9% | 18.6% | 12.2% | 51% \pm 14% |
| Pteropod ^{b,d} | 1.5 (Bednaršek et al. 2019) | 18.7% | 57.1% | 75.9% | 79.5% | 60.8% | 13% \pm 16% |
| Pteropod ^{b,d} | 1.2 (Bednaršek et al. 2019) | 0.0% | 2.8% | 18.7% | 15.5% | 15.5% | 31 \pm 12% |
| Pteropod ^{b,e} | 1.5 (Bednaršek et al. 2019) | 0.0% | 8.6% | 36.5% | 42.0% | 42.0% | 24% \pm 11% |
| Pteropod ^{b,e} | 1.2 (Bednaršek et al. 2019) | 0.0% | 0.0% | 0.0% | 4.0% | 4.0% | 39% \pm 9% |
| Coral ^{s,a,f} | 3.5 (Guinotte et al. 2003) | 11.2% | 27.5% | 66.8% | 54.0% | 42.8% | 15% \pm 9% |

Note: Depth ranges used: ^asurface to 25 m; ^bSurface to 200 m. Region used: ^cGlobal coastal; ^dPolar oceans; ^eCalifornia Current Ecosystem; ^fLow latitude regions (40° S to 40° N).

with the pre-industrial value, gives propagated uncertainty of $\pm 5.3\%$ on the 20% boundary. By using both a global and regional analysis we demonstrate that large parts of the ocean have expanded into, and sometimes well beyond, these boundary uncertainties. This work is a first attempt at adding uncertainty to the OA planetary boundary. Additional errors in data collection, model development and pre-industrial values could lead to even larger uncertainties. This is highlighted by the variability in uncertainties across the oceanic regions. For instance, the Arctic Ocean boundary has the highest uncertainties ($\pm 13\%$) predominantly due to the variability between models and their representation of OA dynamics in the region. There has been an improvement between the CMIP5 and CMIP6 models in terms of OA parameters in the Arctic (Terhaar et al. 2021), but it remains clear that there are still issues with the paucity of data in that region, together with important drivers of carbon cycling, such as river fluxes (e.g., Tank et al. 2023) and sea ice interaction (Qi et al. 2022; Swoboda et al. 2024), being poorly represented in these global models.

Understanding the regional dynamics is conceivably more useful than the global average in terms of the impact on functioning of the marine ecosystem, feedback to planetary systems, as well as the ecosystem services provided. For example, polar and sub-polar regions are important for carbon uptake (Friedlingstein et al. 2024), and the interaction between OA and future CO₂ uptake is an important planetary feedback to understand and assess (Chikamoto et al. 2023; Gehlen et al. 2011). Moreover, increasing water temperatures (included in the saturation state calculations here), which are not uniform across the global ocean, promote the dissociation of bicarbonate ions, releasing extra carbonate ions and slightly counteracts the decreasing trend of seawater saturation state (Figure S4; Jiang et al. 2019). However, this temperature-driven change in saturation state is relatively minor, amounting to only about a 1% increase with a 5°C rise in water temperature. Furthermore, understanding key biological indicators that are fundamental parts of the food web is globally relevant, but regionally specific, given that species are shifting their biogeographic distributions with warming (IPCC 2021). Indeed, climate-induced changes in food webs, particularly moving into the polar regions, may not be supported if OA causes a restructuring in the base of that food web. Assessing the regional conditions is also especially important if a boundary is set based on regionally-specific criteria, and where regions are changing at different rates, as is the case here. Indeed, the regional assessment shows that although the polar oceans are not yet undersaturated with respect to average Ω_{Arag} , they have crossed the 20% boundary and concur with polar observational studies that there are some regional and seasonal exceptions even today. The proportion of Arctic surface area that is undersaturated is growing rapidly and resulting in relevant biological thresholds being exceeded, demonstrating extensive species impairments under current conditions. In contrast, the low latitude regions have, on average, already transitioned into marginal conditions for supporting coral reef growth, with projected expansion of these areas, but have not yet crossed the 20% boundary.

Coastal regions are naturally more variable than the open ocean, with complex interacting drivers that are poorly constrained in global ESMs. Therefore, the uncertainties associated with

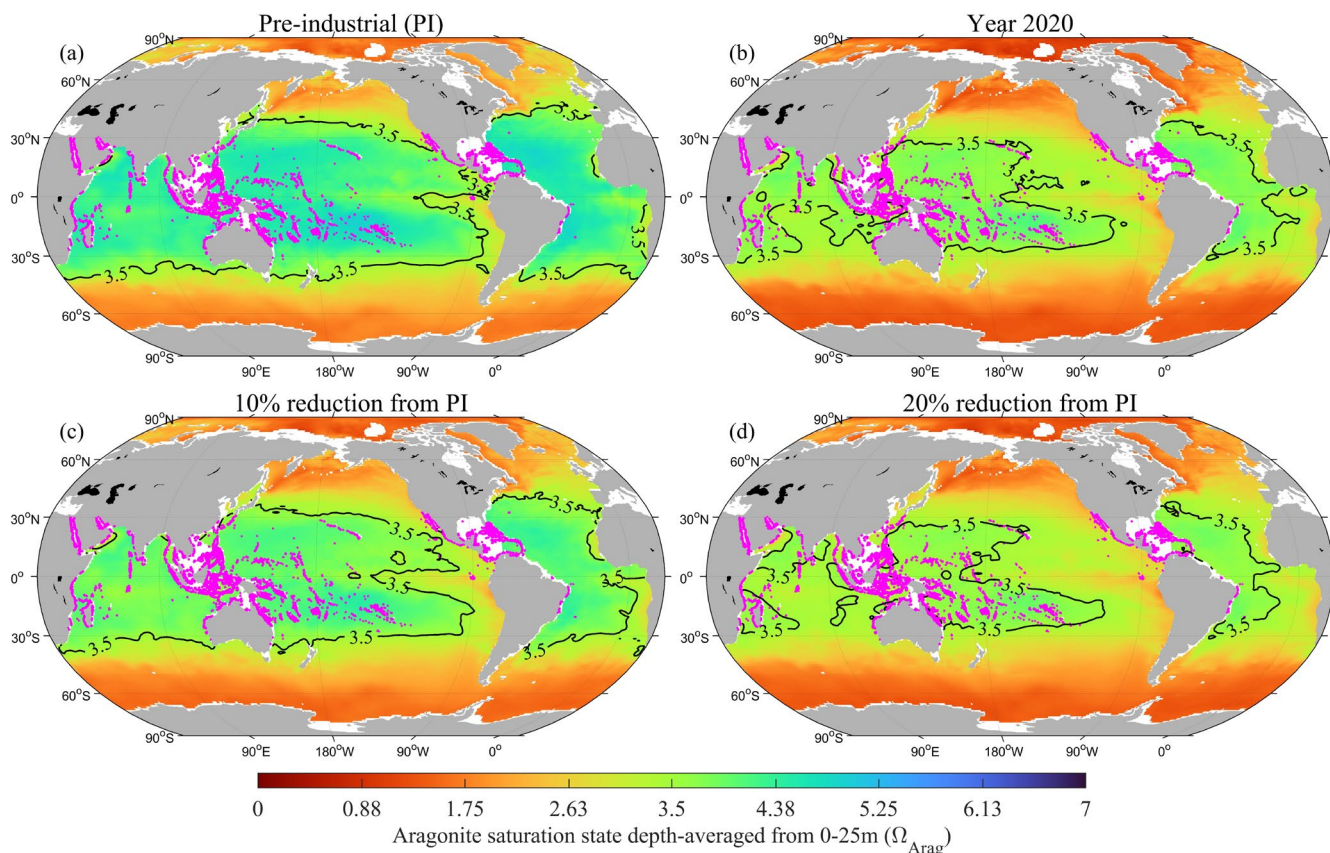


FIGURE 3 | Maps of surface ocean aragonite saturation state (Ω_{Arag}), highlighting the 3.5 contour to show the regions that can be considered marginal conditions for coral systems, with coral reefs distribution overlaid on each map in purple dots. (a) Pre-industrial Ω_{Arag} , (b) year 2020 Ω_{Arag} , (c) Ω_{Arag} conditions at 10% reduction from pre-industrial levels, and (d) Ω_{Arag} conditions at 20% reduction from pre-industrial levels.

changes in the coastal regions are likely to be much larger and underestimated in this work. Our analysis of the global coasts suggests that the OA signal still results in a reduction in suitable habitat for economically important calcifying species (i.e., Feely et al. 2024). The analysis here does not consider extreme events or abrupt shifts in conditions, which could be more damaging to local populations than the longer-term chronic changes. This is known to be the case for temperature, where population die-offs have been observed as a result of marine heatwaves (Smale et al. 2019). However, the only example, to date, of population die-offs due to periodic OA events is the Pacific oyster larvae on the west coast of North America, where natural upwelling combined with OA has resulted in increased frequency and intensity of OA events impacting hatcheries in the region (Barton et al. 2012, 2015). Although some variability is inherently included in the work here through the model-data uncertainty propagation, these events would add even more variability and ultimately could result in earlier exceedance of critical conditions and enhanced biological implications. Future work should include improved coordination between chemical and biological studies, as well as assessing higher resolution temporal environmental data to properly capture the environment that organisms are exposed to, including the frequency and extent of extreme conditions.

Large portions of the subsurface have already changed significantly from pre-industrial conditions. This was recently highlighted in a paper that reconstructed ocean interior

acidification over the industrial era, confirming that significant changes are occurring in the interior ocean due to the uptake of anthropogenic CO_2 (Müller and Gruber 2024). Indeed, in addition to the horizontal spatial squeeze at specific depth ranges that is highlighted here, Müller and Gruber (2024) emphasise that shoaling of the aragonite saturation horizon ($\Omega_{\text{Arag}} = 1$) has occurred in some places by more than 200 m, which is therefore causing a vertical squeeze on 'safe' habitat for many species. For example, the proportion of habitat that has passed marginal conditions at each individual depth layer for pteropods (1.2 threshold) is 16.4% by year 2020 at the surface, 13.6% at 50 m, 23.4% at 100 m and 42.7% at 200 m (full results in Tables S10–S13). Such vertically stratified information is especially useful for comparative purposes of species that occupy various depth layers to establish the extent of the vertical habitat squeeze and determine their relative sensitivity. The regional variability in shoaling (largest amount of shoaling in the Southern Ocean and North Atlantic, least amount of shoaling in the North Pacific) highlights again the complexity of OA in the 3-dimensional space of the ocean compared to the 2-dimensional surface. This vertical and horizontal squeeze in the chemistry needs to be recognised in assessing planetary biogeochemical functioning, feedbacks to the carbon cycle, habitat suitability and ecosystem stability.

Loss of ecosystem function or suitable habitats can lead to fragmentation, the breaking up the continuous distribution of a species into smaller, isolated patches. This fragmentation

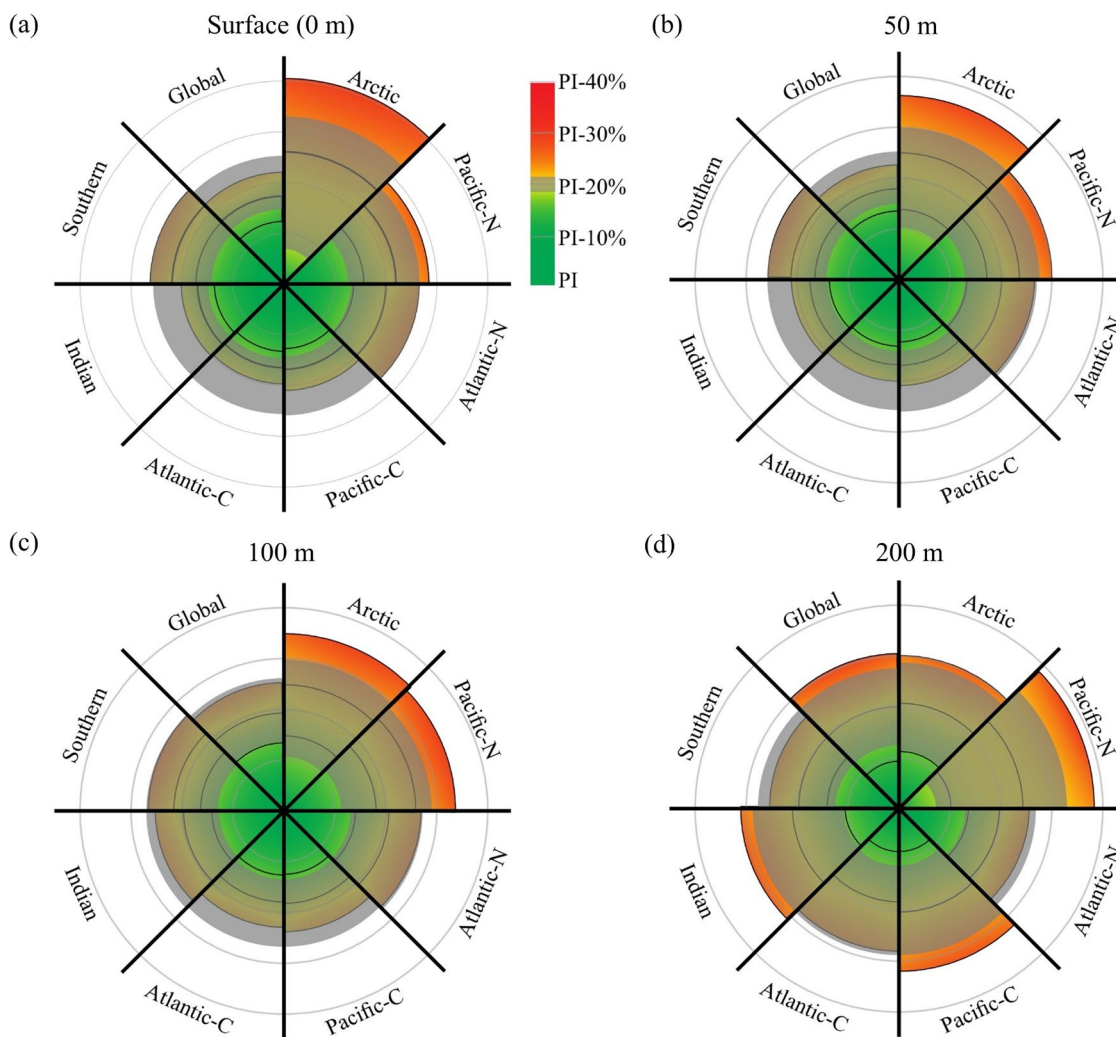


FIGURE 4 | Regional assessment of ocean acidification in year 2020, relative to the boundary of 20% reduction from pre-industrial aragonite saturation state for each depth layer. (a) surface, 0 m, (b) 50 m, (c) 100 m and (d) 200 m. The grey bands represent the boundary, the extent of each wedge represents how far each region has changed. Data is multi-model medians from Jiang et al. (2022) and Jiang (2024) and includes \pm propagated errors both on the 2020 value (black lines on each wedge) and the boundary (grey band). Regions are defined as in Figure 1.

directly reduces population connectivity, as individuals within the fragmented habitats have reduced opportunities for interaction, mating and dispersal. Reduced connectivity limits gene flow between populations, which are essential for maintaining genetic diversity and sustaining adaptation potential, whereby isolated populations with restricted gene flow are more susceptible to inbreeding and reduced evolutionary potential (Bertness and Gaines 1993). Fragmentation can also limit larval dispersal, reducing the ability to seed populations, with isolated populations become increasingly vulnerable to local extinction. As such, maintaining population connectivity is crucial for ensuring the long-term survival of marine species. More accurate OA boundary assessment as demonstrated in this study not only supports decisions on climate mitigation but can help in devising conservation strategies (e.g., Nissen et al. 2024), for example, by providing a stronger scientific foundation for setting targets within policy agreements, such as the Biodiversity Beyond National Jurisdiction (BBNJ) agreement, as well as Kunming-Montreal Global Biodiversity Framework (CBD 2022).

Based on our new analysis of uncertainties, surface and sub-surface changes and crossing into marginal conditions for key biological indicators, we propose that if a single value is to be used as an OA planetary boundary, it should be set at a more conservative value of 10% decline from pre-industrial average global surface Ω_{Arag} conditions, rather than 20%. A boundary set to 10% pre-industrial conditions will: (1) Limit the area of Arctic surface ocean that is undersaturated to less than 10%; (2) Sustain polar habitats and protect sensitive species such as pteropods from shell dissolution, that is, using this lower boundary, 57% of the upper 200 m of polar pteropod habitat will be at or below conditions that result in mild shell dissolution, with only 3% of the habitat space at or below conditions that result in severe dissolution; (3) Preserve conditions in tropical regions above the level required for adequate coral growth: limiting the areal loss of suitable coral habitat to 28% of the low latitude regions (Figure 3); and (4) Sustain economically and ecologically relevant bivalves in the coastal regions, not just protecting them against OA but also increasing their resilience to other stressors, including warming

and deoxygenation. The percentage of global coastal habitat being unsuitable for oyster production falls to just 10% if a 10% boundary is used.

The 10% boundary is a more stringent and ecologically meaningful target, reflecting the findings of this study that 20% reduction provides insufficient protection of many crucial ocean habitats beyond the surface waters. This boundary of 10% should be considered as the lower end of an uncertainty range of increasing risk, especially important as OA should be considered in combination with other stressors and extreme events that can cause critical habitat and biodiversity loss, and restructure ecosystems. However, redefining the OA boundary to 10% means that the boundary was first crossed during the 1980s, with the entire surface ocean having passed this boundary by the 2000s. Preventing further OA increase and minimising risks to ocean ecosystems on a global level can only be done by reducing CO₂ emissions along with rapid atmospheric greenhouse gas removal (Lee et al. 2023).

It is important to recognise the limitations of an OA boundary that only uses aragonite, as mentioned by previous critiques of the planetary boundary assessment (Biermann and Kim 2020; Brewer 2009; Nash et al. 2017). Ω_{Arag} is just one parameter of several that represent how ocean chemistry is changing in relation to OA. For instance, some biological and biogeochemical processes (e.g., primary production, carbon fixation, nitrogen cycling) have been shown to be influenced by shifts in pCO₂ or pH (Findlay and Turley 2021). Considering how these processes, and importantly their interactions, relate to maintaining a safe operating space is a complex task, especially given many of the results come from studies that only look at response to present day and future conditions, with little information about response to pre-industrial levels, natural variability or through recent history. As more field studies and monitoring data become available some of these gaps could be filled, and a future assessment of the OA boundary may be able to bring in these aspects as well as improve on our uncertainty assessment. In fact, it may be more pertinent to focus on the CO₂ level that drives OA-related change rather than pick one specific OA chemical indicator (Ω_{Arag}). Indeed, as recognised by others (e.g., Rose et al. 2024), OA should not be the only marine process considered in the context of planetary boundary framework. For example, ocean warming, including marine heatwaves, and deoxygenation have wide-scale repercussions for ocean health and planetary system functioning. The complex interactions between these drivers also needs to be considered as they manifest on different time-frames, to varying degrees in different locations, and can result in different responses in the ecosystem when considered together, in contrast to when considered in isolation (Alter et al. 2024).

To complement the assessment of which parameter to use, further fundamental work is required to better characterise biological indicators and quantify their uncertainties, where possible taking into account life-stage specific sensitivities, pre-exposure conditions and adaptation strategies, recognising additional conditions that could impact the thresholds and their durations. While the thresholds used here do not cover these issues specifically, they represent the level at which potential harm may occur, in keeping with the

planetary boundary framework of remaining within a safe space. Further developments of the environmental envelope assessment, to complement the threshold assessment, could include using higher resolution data that can improve the representation of exposure conditions both in space (horizontally and vertically) and in time (sub-monthly). Indeed the environmental envelopes defined here may underestimate the range of Ω_{Arag} . An underestimate will result in a more precautionary 'limit', but is more representative of large-scale averages relevant for the planetary boundary framework.

We conclude that this study provides a more robust and nuanced scientific basis for the OA planetary boundary framework, although further developments, as outlined above, should be considered. This framework is being used in policy decisions related to OA, which provide the scientific basis for national and international collaboration and action, including informed prioritisation of marine conservation efforts. Regions and species most vulnerable to OA can be targeted for specific conservation measures. The subsurface impacts, in particular, require a shift in focus to protect mesopelagic and deep-sea habitats and the species dependent on them. The incorporation of uncertainty in the study highlights the need for adaptive management strategies to deal with OA, the potential benefits of which are improved resource management and increased resilience.

Author Contributions

Helen S. Findlay: conceptualization, data curation, formal analysis, funding acquisition, investigation, methodology, project administration, visualization, writing – original draft, writing – review and editing. **Richard A. Feely:** conceptualization, funding acquisition, validation, writing – review and editing. **Li-Qing Jiang:** data curation, formal analysis, funding acquisition, methodology, visualization, writing – review and editing. **Greg Pelletier:** data curation, formal analysis, methodology, visualization, writing – review and editing. **Nina Bednaršek:** data curation, formal analysis, methodology, writing – review and editing.

Acknowledgments

We thank Stephen Widdicombe and Tim Smyth at Plymouth Marine Laboratory for early comments on an early draft, as well as anonymous reviewers for their comments. H.S.F. received funding from a Natural Environment Research Council grant NE/X006271/1 and European Space Agency, Ocean Health—Ocean Acidification grant AO/1-10757/21/I-DT. N.B. received funding from NOAA Multiple stressors grant NA210AR4310251 and Slovene Research Agency grant N1-0359. R.A.F. acknowledges funding from NOAA's Global Ocean Monitoring and Observing and Ocean Acidification Programs (GOMO Fund Reference Number 100018302 and OAP NRDD 20848, and award number NA210AR4310251) through the Cooperative Institute for Climate, Ocean and Ecosystem Studies (CICOES) under NOAA Cooperative Agreement NA20OAR4320271. L.-Q.J. received funding from NOAA Ocean Acidification Program (OAP, <https://ror.org/02bf4816>) NOAA National Centers for Environmental Information (NCEI) through a NOAA Cooperative Institute for Satellite Earth System Studies (CISESS) Grant (NA19NES4320002) at the Earth System Science Interdisciplinary Center (ESSIC), University of Maryland, College Park, Maryland.

Conflicts of Interest

The authors declare no conflicts of interest.

Data Availability Statement

The data that support the findings of this study are openly available from figshare at <https://doi.org/10.6084/m9.figshare.28861832>. Ocean acidification indicators were obtained from NOAA National Centers for Environmental Information at <https://doi.org/10.25921/9ker-bc48> and at <https://doi.org/10.25921/vdnc-q403>. The OceanSODA-ETHZv1.2023 data were obtained from NOAA National Centers for Environmental Information at <https://doi.org/10.25921/m5wx-ja34>. Occurrence data was obtained from the Ocean Biodiversity Information Service mapper at www.obis.org. The warm-water coral reef occurrence data were obtained from UNEP-WCMC, WorldFish Centre, WRI, TNC at <https://doi.org/10.34892/t2wk-5t34>.

References

- Akiha, F., G. Hashida, R. Makabe, H. Hattori, and H. Sasaki. 2017. "Distribution in the Abundance and Biomass of Shelled Pteropods in Surface Waters of the Indian Sector of the Antarctic Ocean in Mid-Summer." *Polar Science* 12: 12–18. <https://doi.org/10.1016/j.polar.2017.02.003>.
- Alter, K., J. Jacquemont, J. Claudet, et al. 2024. "Hidden Impacts of Ocean Warming and Acidification on Biological Responses of Marine Animals Revealed Through Meta-Analysis." *Nature Communications* 15, no. 1: 2885. <https://doi.org/10.1038/s41467-024-47064-3>.
- Anglada-Ortiz, G., K. Zamelczyk, J. Meilland, et al. 2021. "Planktic Foraminiferal and Pteropod Contributions to Carbon Dynamics in the Arctic Ocean (North Svalbard Margin)." *Frontiers in Marine Science* 8: 661158. <https://doi.org/10.3389/fmars.2021.661158>.
- Barton, A., B. Hales, G. G. Waldbusser, C. Langdon, and R. A. Feely. 2012. "The Pacific Oyster, *Crassostrea gigas*, Shows Negative Correlation to Naturally Elevated Carbon Dioxide Levels: Implications for Near-Term Ocean Acidification Effects." *Limnology and Oceanography* 57, no. 3: 698–710. <https://doi.org/10.4319/lo.2012.57.3.0698>.
- Barton, A., G. G. Waldbusser, R. A. Feely, et al. 2015. "Impacts of Coastal Acidification on the Pacific Northwest Shellfish Industry and Adaptation Strategies Implemented in Response." *Oceanography* 28, no. 2: 146–159. <https://doi.org/10.5670/oceanog.2015.38>.
- Bednaršek, N., R. Feely, G. Pelletier, and F. Desmet. 2023. "Global Synthesis of the Status and Trends of Ocean Acidification Impacts on Shelled Pteropods." *Oceanography* 36: 130–137. <https://doi.org/10.5670/oceanog.2023.210>.
- Bednaršek, N., R. A. Feely, M. W. Beck, et al. 2020. "Exoskeleton Dissolution With Mechanoreceptor Damage in Larval Dungeness Crab Related to Severity of Present-Day Ocean Acidification Vertical Gradients." *Science of the Total Environment* 716: 136610. <https://doi.org/10.1016/j.scitotenv.2020.136610>.
- Bednaršek, N., R. A. Feely, E. L. Howes, et al. 2019. "Systematic Review and Meta-Analysis Toward Synthesis of Thresholds of Ocean Acidification Impacts on Calcifying Pteropods and Interactions With Warming." *Frontiers in Marine Science* 6: 227. <https://doi.org/10.3389/fmars.2019.00227>.
- Bednaršek, N., R. A. Feely, J. C. P. Reum, et al. 2014. "*Limacina helicina* Shell Dissolution as an Indicator of Declining Habitat Suitability Owing to Ocean Acidification in the California Current Ecosystem." *Proceedings of the Royal Society B: Biological Sciences* 281, no. 1785: 20140123. <https://doi.org/10.1098/rspb.2014.0123>.
- Bednaršek, N., J. Možina, M. Vogt, C. O'Brien, and G. A. Tarling. 2012a. "The Global Distribution of Pteropods and Their Contribution to Carbonate and Carbon Biomass in the Modern Ocean." *Earth System Science Data* 4, no. 1: 167–186. <https://doi.org/10.5194/essd-4-167-2012>.
- Bednaršek, N., J. A. Newton, M. W. Beck, et al. 2021. "Severe Biological Effects Under Present-Day Estuarine Acidification in the Seasonally Variable Salish Sea." *Science of the Total Environment* 765: 142689. <https://doi.org/10.1016/j.scitotenv.2020.142689>.
- Bednaršek, N., G. A. Tarling, D. C. E. Bakker, et al. 2012b. "Extensive Dissolution of Live Pteropods in the Southern Ocean." *Nature Geoscience* 5, no. 12: 881–885. <https://doi.org/10.1038/ngeo1635>.
- Bernard, K. S., and P. W. Froneman. 2009. "The Sub-Antarctic Euthecosome Pteropod, *Limacina retroversa*: Distribution Patterns and Trophic Role." *Deep Sea Research Part I: Oceanographic Research Papers* 56, no. 4: 582–598. <https://doi.org/10.1016/j.dsr.2008.11.007>.
- Bertness, M. D., and S. D. Gaines. 1993. "Larval Dispersal and Local Adaptation in Acorn Barnacles." *Evolution* 47, no. 1: 316–320. <https://doi.org/10.2307/2410140>.
- Biermann, F., and R. E. Kim. 2020. "The Boundaries of the Planetary Boundary Framework: A Critical Appraisal of Approaches to Define a 'Safe Operating Space' for Humanity." *Annual Review of Environment and Resources* 45, no. 1: 497–521. <https://doi.org/10.1146/annurev-envir-on-012320-080337>.
- Boyd, P. W., S. Collins, S. Dupont, et al. 2018. "Experimental Strategies to Assess the Biological Ramifications of Multiple Drivers of Global Ocean Change—A Review." *Global Change Biology* 24, no. 6: 2239–2261. <https://doi.org/10.1111/gcb.14102>.
- Brewer, P. G. 2009. "Consider All Consequences." *Nature Climate Change* 3: 117–118. <https://doi.org/10.1038/climate.2009.98>.
- Caldiera, K., and M. Wickett. 2003. "Anthropogenic Carbon and Ocean pH." *Nature* 425: 365. <https://doi.org/10.1038/425365a>.
- CBD. 2022. "Decision Adopted by the Conference of the Parties to the Convention on Biological Diversity 15/5. Monitoring Framework for the Kunming-Montreal Global Biodiversity Framework." <https://www.cbd.int/doc/decisions/cop-15/cop-15-dec-05-en.pdf>.
- Chave, K. E., and E. Suess. 1970. "Calcium Carbonate Saturation in Seawater: Effects of Dissolved Organic Matter." *Limnology and Oceanography* 15, no. 4: 633–637. <https://doi.org/10.4319/lo.1970.15.4.0633>.
- Chikamoto, M. O., P. DiNezio, and N. Lovenduski. 2023. "Long-Term Slowdown of Ocean Carbon Uptake by Alkalinity Dynamics." *Geophysical Research Letters* 50, no. 4: e2022GL101954. <https://doi.org/10.1029/2022GL101954>.
- Cross, J. N., J. T. Mathis, R. S. Pickart, and N. R. Bates. 2018. "Formation and Transport of Corrosive Water in the Pacific Arctic Region." *Deep-Sea Research Part II: Topical Studies in Oceanography* 152: 67–81. <https://doi.org/10.1016/j.dsr2.2018.05.020>.
- Doney, S. C., D. S. Busch, S. R. Cooley, and K. J. Kroeker. 2020. "The Impacts of Ocean Acidification on Marine Ecosystems and Reliant Human Communities." *Annual Review of Environment and Resources* 45: 83–112. <https://doi.org/10.1146/annurev-environ-012320-083019>.
- Etheridge, D. M., L. P. Steele, R. L. Langenfelds, R. J. Francey, J.-M. Barnola, and V. I. Morgan. 1996. "Natural and Anthropogenic Changes in Atmospheric CO₂ Over the Last 1000 Years From Air in Antarctic Ice and Firn." *Journal of Geophysical Research: Atmospheres* 101, no. D2: 4115–4128. <https://doi.org/10.1029/95JD03410>.
- Fassbender, A. J., B. R. Carter, J. D. Sharp, Y. Huang, M. C. Arroyo, and H. Frenzel. 2023. "Amplified Subsurface Signals of Ocean Acidification." *Global Biogeochemical Cycles* 37, no. 12: e2023GB007843. <https://doi.org/10.1029/2023GB007843>.
- Feely, R., L.-Q. Jiang, R. Wanninkhof, et al. 2023. "Acidification of the Global Surface Ocean: What We Have Learned From Observations." *Oceanography* 36: 120–129. <https://doi.org/10.5670/oceanog.2023.222>.
- Feely, R. A., S. R. Alin, B. Carter, et al. 2016. "Chemical and Biological Impacts of Ocean Acidification Along the West Coast of North America." *Estuarine, Coastal and Shelf Science* 183: 260–270. <https://doi.org/10.1016/j.ecss.2016.08.043>.
- Feely, R. A., B. R. Carter, S. R. Alin, D. Greeley, and N. Bednaršek. 2024. "The Combined Effects of Ocean Acidification and Respiration on Habitat Suitability for Marine Calcifiers Along the West Coast of

- North America." *Journal of Geophysical Research: Oceans* 129, no. 4: e2023JC019892.
- Feely, R. A., C. L. Sabine, J. M. Hernandez-Ayon, D. Ianson, and B. Hales. 2008. "Evidence for Upwelling of Corrosive 'Acidified' Water Onto the Continental Shelf." *Science* 320, no. 5882: 1490–1492. <https://doi.org/10.1126/science.1155676>.
- Feely, R. A., C. L. Sabine, K. Lee, et al. 2004. "Impact of Anthropogenic CO₂ on the CaCO₃ System in the Oceans." *Science* 305, no. 5682: 362–366.
- Filipa Mesquita, A., F. José Mendes Gonçalves, and A. Marta Mendes Gonçalves. 2024. "Marine Bivalves' Ecological Roles and Humans-Environmental Interactions to Achieve Sustainable Aquatic Ecosystems." In *Environmental Sciences*, edited by A. Marta, vol. 15. IntechOpen. <https://doi.org/10.5772/intechopen.111386>.
- Findlay, H. S., and C. Turley. 2021. "Ocean Acidification and Climate Change." In *Climate Change*, 251–279. Elsevier. <https://doi.org/10.1016/b978-0-12-821575-3.00013-x>.
- Findlay, H. S., H. L. Wood, M. A. Kendall, S. Widdicombe, J. I. Spicer, and R. J. Twitchett. 2011. "Comparing the Impact of High CO₂ on Calcium Carbonate Structures in Different Marine Organisms." *Marine Biology Research* 7, no. 6: 565–575. <https://doi.org/10.1080/17451000.2010.547200>.
- Friedlingstein, P., M. O'Sullivan, M. W. Jones, et al. 2024. "Global Carbon Budget 2024." <https://doi.org/10.5194/essd-2024-519>.
- Gabaev, D. D. 2015. "Variations in Vertical Distribution of the Young of Two Commercial Bivalve Species Depending on Some Factors. American." *Journal of Marine Science* 3, no. 1: 22–35. <https://doi.org/10.12691/marine-3-1-3>.
- Gangstø, R., M. Gehlen, B. Schneider, L. Bopp, O. Aumont, and F. Joos. 2008. "Modeling the Marine Aragonite Cycle: Changes Under Rising Carbon Dioxide and Its Role in Shallow Water CaCO₃ Dissolution." *Biogeosciences* 5, no. 4: 1057–1072. <https://doi.org/10.5194/bg-5-1057-2008>.
- Gaylord, B., T. M. Hill, E. Sanford, et al. 2011. "Functional Impacts of Ocean Acidification in an Ecologically Critical Foundation Species." *Journal of Experimental Biology* 214, no. 15: 2586–2594. <https://doi.org/10.1242/jeb.055939>.
- Gehlen, M., N. Gruber, R. Gangstø, L. Bopp, and A. Oschlies. 2011. "Biogeochemical Consequences of Ocean Acidi Cation and Feedbacks to the Earth System." In *Ocean Acidification*. Oxford University Press. <https://doi.org/10.1093/oso/9780199591091.003.0017>.
- Gobler, C. J., and S. C. Talmage. 2014. "Physiological Response and Resilience of Early Life-Stage Eastern Oysters (*Crassostrea virginica*) to Past, Present and Future Ocean Acidification." *Conservation Physiology* 2, no. 1: cou004. <https://doi.org/10.1093/conphys/cou004>.
- Gregor, L., and N. Gruber. 2020. *OceanSODA-ETHZ: A Global Gridded Dataset of the Surface Ocean Carbonate System for Seasonal to Decadal Studies of Ocean Acidification (v2023) (NCEI Accession 0220059)*. NOAA National Centers for Environmental Information. <https://doi.org/10.25921/m5wx-ja34>.
- Gregor, L., and N. Gruber. 2021. "OceanSODA-ETHZ: A Global Gridded Data Set of the Surface Ocean Carbonate System for Seasonal to Decadal Studies of Ocean Acidification." *Earth System Science Data* 13, no. 2: 777–808. <https://doi.org/10.5194/essd-13-777-2021>.
- Gruber, N., P. W. Boyd, T. L. Frölicher, and M. Vogt. 2021. "Biogeochemical Extremes and Compound Events in the Ocean." *Nature* 600, no. 7889: 395–407. <https://doi.org/10.1038/s41586-021-03981-7>.
- Guinotte, J. M., R. W. Buddemeier, and J. A. Kleypas. 2003. "Future Coral Reef Habitat Marginality: Temporal and Spatial Effects of Climate Change in the Pacific Basin." *Coral Reefs* 22, no. 4: 551–558. <https://doi.org/10.1007/s00338-003-0331-4>.
- Harris, P. T., L. Westerveld, Q. Zhao, and M. J. Costello. 2023. "Rising Snow Line: Ocean Acidification and the Submergence of Seafloor Geomorphic Features Beneath a Rising Carbonate Compensation Depth." *Marine Geology* 463: 107121. <https://doi.org/10.1016/j.margeo.2023.107121>.
- Hauri, C., R. Pagès, K. Hedstrom, et al. 2024. "More Than Marine Heatwaves: A New Regime of Heat, Acidity, and Low Oxygen Compound Extreme Events in the Gulf of Alaska." *AGU Advances* 5, no. 1: e2023AV001039. <https://doi.org/10.1029/2023AV001039>.
- Hettinger, A., E. Sanford, T. M. Hill, et al. 2012. "Persistent Carry-Over Effects of Planktonic Exposure to Ocean Acidification in the Olympia Oyster." *Ecology* 93: 2758–2768. <https://doi.org/10.1890/12-0567.1>.
- Hobday, A. J., L. V. Alexander, S. E. Perkins, et al. 2016. "A Hierarchical Approach to Defining Marine Heatwaves." *Progress in Oceanography* 141: 227–238. <https://doi.org/10.1016/j.pocean.2015.12.014>.
- Hunt, B. P. V., E. A. Pakhomov, G. W. Hosie, V. Siegel, P. Ward, and K. Bernard. 2008. "Pteropods in Southern Ocean Ecosystems." *Progress in Oceanography* 78, no. 3: 193–221. <https://doi.org/10.1016/j.pocean.2008.06.001>.
- Intergovernmental Panel on Climate Change (IPCC). 2023. "Climate Change 2021—The Physical Science Basis: Working Group I Contribution to the Sixth Assessment Report of the Intergovernmental Panel on Climate Change." In *Changing State of the Climate System*, 287–422. Cambridge University Press. <https://doi.org/10.1017/9781009157896.004>.
- IOC-UNESCO. 2022. "Multiple Ocean Stressors: A Scientific Summary for Policy Makers." In *IOC Information Series 1404*, 20. UNESCO. <https://doi.org/10.25607/OBP-1724>.
- IPCC. 2021. "Summary for Policymakers." In *Climate Change 2021: The Physical Science Basis. Contribution of Working Group I to the Sixth Assessment Report of the Intergovernmental Panel on Climate Change*, edited by V. Masson-Delmotte, P. Zhai, A. Pirani, et al. Cambridge University Press.
- Jiang, L., B. R. Carter, R. A. Feely, S. K. Lauvset, and A. Olsen. 2019. "Surface Ocean pH and Buffer Capacity: Past, Present and Future." *Scientific Reports* 9: 1–11. <https://doi.org/10.1038/s41598-019-55039-4>.
- Jiang, L., J. Dunne, B. R. Carter, et al. 2023. "Global Surface Ocean Acidification Indicators From 1750 to 2100." *Journal of Advances in Modeling Earth Systems* 15, no. 3: e2022MS003563. <https://doi.org/10.1029/2022MS003563>.
- Jiang, L. Q. 2024. *Global Subsurface Ocean Acidification Indicators at Depth Levels of 50, 100, and 200 Meters From 1750-01-01 to 2100-12-31 (NCEI Accession 0287573)*. NOAA National Centers for Environmental Information. <https://doi.org/10.25921/vdnc-q403>.
- Jiang, L. Q., J. P. Dunne, B. Carter, et al. 2022. *Global Surface Ocean Acidification Indicators From 1750 to 2100 (NCEI Accession 0259391)*. [Dataset]. NOAA National Centers for Environmental Information. <https://doi.org/10.25921/9ker-bc48>.
- Jiang, L. Q., R. A. Feely, B. R. Carter, D. J. Greeley, D. K. Gledhill, and K. M. Arzayus. 2015. "Climatological Distribution of Aragonite Saturation State in the Global Oceans." *Global Biogeochemical Cycles* 29, no. 10: 1656–1673. <https://doi.org/10.1002/2015GB005198>.
- Kleypas, J. A., J. W. McManus, and L. A. B. Meñez. 1999. "Environmental Limits to Coral Reef Development: Where Do we Draw the Line?" *American Zoologist* 39, no. 1: 146–159. <https://doi.org/10.1093/icb/39.1.146>.
- Knights, A., T. Crowe, and G. Burnell. 2006. "Mechanisms of Larval Transport: Vertical Distribution of Bivalve Larvae Varies With Tidal Conditions." *Marine Ecology Progress Series* 326: 167–174. <https://doi.org/10.3354/meps326167>.
- Kobayashi, H. A. 1974. "Growth Cycle and Related Vertical Distribution of the Thecosomatous Pteropod *Spiratella* (?*Limacina*?) *helicina* in the Central Arctic Ocean." *Marine Biology* 26, no. 4: 295–301. <https://doi.org/10.1007/BF00391513>.

- Lauvset, S. K., R. M. Key, A. Olsen, et al. 2016. "A New Global Inter Ocean Mapped Climatology: The 1°×1° GLODAP Version 2." *Earth System Science Data* 8: 325–340. <https://doi.org/10.5194/essd-8-325-2016>.
- Lee, H., K. Calvin, D. Dasgupta, et al. 2023. *IPCC, 2023: Climate Change 2023: Synthesis Report. Contribution of Working Groups I, II and III to the Sixth Assessment Report of the Intergovernmental Panel on Climate Change [Core Writing Team]*, edited by H. Lee and J. Romero. Intergovernmental Panel on Climate Change (IPCC). <https://doi.org/10.59327/IPCC/AR6-9789291691647>.
- León, P., N. Bednaršek, P. Walsham, et al. 2020. "Relationship Between Shell Integrity of Pelagic Gastropods and Carbonate Chemistry Parameters at a Scottish Coastal Observatory Monitoring Site." *ICES Journal of Marine Science* 77, no. 1: 436–450. <https://doi.org/10.1093/icesjms/fsz178>.
- Leung, J. Y. S., B. D. Russell, and S. D. Connell. 2020. "Linking Energy Budget to Physiological Adaptation: How a Calcifying Gastropod Adjusts or Succumbs to Ocean Acidification and Warming." *Science of the Total Environment* 715: 136939. <https://doi.org/10.1016/j.scitotenv.2020.136939>.
- Ma, D., L. Gregor, and N. Gruber. 2023. "Four Decades of Trends and Drivers of Global Surface Ocean Acidification." *Global Biogeochemical Cycles* 37, no. 7: e2023GB007765. <https://doi.org/10.1029/2023GB007765>.
- MacFarling Meure, C., D. Etheridge, C. Trudinger, et al. 2006. "Law Dome CO₂, CH₄ and N₂O Ice Core Records Extended to 2000 Years BP." *Geophysical Research Letters* 33, no. 14: 2006GL026152. <https://doi.org/10.1029/2006GL026152>.
- Manno, C., V. Tirelli, A. Accornero, and S. Fonda Umani. 2010. "Importance of the Contribution of *Limacina helicina* Faecal Pellets to the Carbon Pump in Terra Nova Bay (Antarctica)." *Journal of Plankton Research* 32, no. 2: 145–152. <https://doi.org/10.1093/plankt/fbp108>.
- Manzello, D. P. 2010. "Coral Growth With Thermal Stress and Ocean Acidification: Lessons From the Eastern Tropical Pacific." *Coral Reefs* 29, no. 3: 749–758. <https://doi.org/10.1007/s00338-010-0623-4>.
- Mastrandrea, M. D., C. B. Field, T. F. Stocker, et al. 2010. "Guidance Note for Lead Authors of the IPCC Fifth Assessment Report on Consistent Treatment of Uncertainties, Intergovernmental Panel on Climate Change." <https://www.ipcc.ch/site/assets/uploads/2018/05/uncertainty-guidance-note.pdf>.
- Mucci, A. 1983. "The Solubility of Calcite and Aragonite in Seawater at Various Salinities, Temperatures, and One Atmosphere Total Pressure." *American Journal of Science* 283: 780–799.
- Müller, J. D., and N. Gruber. 2024. "Progression of Ocean Interior Acidification Over the Industrial Era." *Science Advances* 10, no. 48: eado3103. <https://doi.org/10.1126/sciadv.ado3103>.
- Nash, K. L., C. Cvitanovic, E. A. Fulton, et al. 2017. "Planetary Boundaries for a Blue Planet." *Nature Ecology & Evolution* 1, no. 11: 1625–1634. <https://doi.org/10.1038/s41559-017-0319-z>.
- Nissen, C., N. S. Lovenduski, C. M. Brooks, M. Hoppema, R. Timmermann, and J. Hauck. 2024. "Severe 21st-Century Ocean Acidification in Antarctic Marine Protected Areas." *Nature Communications* 15, no. 1: 259. <https://doi.org/10.1038/s41467-023-44438-x>.
- OBIS. 2023a. *Distribution Records of *Limacina helicina* (Phipps, 1774) Available: Ocean Biodiversity Information System. [Dataset]*. Intergovernmental Oceanographic Commission of UNESCO. www.obis.org.
- OBIS. 2023b. *Distribution Records of *Magallana Gigas* (Thunberg, 1793) Available: Ocean Biodiversity Information System. [Dataset]*. Intergovernmental Oceanographic Commission of UNESCO. www.obis.org.
- OBIS. 2023c. *Distribution Records of *Mytilus Californianicus* (Conrad, 1837) Available: Ocean Biodiversity Information System. [Dataset]*. Intergovernmental Oceanographic Commission of UNESCO. www.obis.org.
- Orr, J. C., V. J. Fabry, O. Aumont, et al. 2005. "Anthropogenic Ocean Acidification Over the Twenty-First Century and Its Impact on Calcifying Organisms." *Nature* 437, no. 7059: 681–686. <https://doi.org/10.1038/nature04095>.
- Perez, F. F., M. Fontela, M. I. García-Ibáñez, et al. 2018. "Meridional Overturning Circulation Conveys Fast Acidification to the Deep Atlantic Ocean." *Nature* 554, no. 7693: 515–518. <https://doi.org/10.1038/nature25493>.
- Pörtner, H.-O., D. C. Roberts, V. Masson-Delmotte, et al. 2019. *IPCC Special Report on the Ocean and Cryosphere in a Changing Climate*. Vol. 1, 1–755. IPCC Intergovernmental Panel on Climate Change: Geneva, Switzerland.
- Pozzi, F., T. Di Matteo, and T. Aste. 2012. "Exponential Smoothing Weighted Correlations." *European Physical Journal B* 85, no. 6: 175. <https://doi.org/10.1140/epjb/e2012-20697-x>.
- Qi, D., Y. Wu, L. Chen, et al. 2022. "Rapid Acidification of the Arctic Chukchi Sea Waters Driven by Anthropogenic Forcing and Biological Carbon Recycling." *Geophysical Research Letters* 49, no. 4: e2021GL097246. <https://doi.org/10.1029/2021GL097246>.
- Raven, J., K. Caldeira, H. Elderfield, et al. 2005. *Ocean Acidification due to Increasing Atmospheric Carbon Dioxide*, 68. Royal Society.
- Ready, J., K. Kaschner, A. B. South, et al. 2010. "Predicting the Distributions of Marine Organisms at the Global Scale." *Ecological Modelling* 221, no. 3: 467–478. <https://doi.org/10.1016/j.ecolmodel.2009.10.025>.
- Richardson, K., W. Steffen, W. Lucht, et al. 2023. "Earth Beyond Six of Nine Planetary Boundaries." *Science Advances* 9, no. 37: eadh2458. <https://doi.org/10.1126/sciadv.adh2458>.
- Rockström, J., W. Steffen, K. Noone, et al. 2009. "Planetary Boundaries: Exploring the Safe Operating Space for Humanity." *Ecology and Society* 14, no. 2: 32.
- Rose, K. C., E. M. Ferrer, S. R. Carpenter, et al. 2024. "Aquatic Deoxygenation as a Planetary Boundary and Key Regulator of Earth System Stability." *Nature Ecology & Evolution* 8, no. 8: 1400–1406. <https://doi.org/10.1038/s41559-024-02448-y>.
- Smale, D. A., T. Wernberg, E. C. Oliver, et al. 2019. "Marine Heatwaves Threaten Global Biodiversity and the Provision of Ecosystem Services." *Nature Climate Change* 9, no. 4: 306–312.
- Spalding, M. D., and B. E. Brown. 2015. "Warm-Water Coral Reefs and Climate Change." *Science* 350, no. 6262: 769–771. <https://doi.org/10.1126/science.aad0349>.
- Steffen, W., K. Richardson, J. Rockström, et al. 2015. "Planetary Boundaries: Guiding Human Development on a Changing Planet." *Science* 347, no. 6223: 1259855. <https://doi.org/10.1126/science.1259855>.
- Swoboda, S., T. Krumpfen, E.-M. Nöthig, et al. 2024. "Release of Ballast Material During Sea-Ice Melt Enhances Carbon Export in the Arctic Ocean." *PNAS Nexus* 3, no. 4: pgae081. <https://doi.org/10.1093/pnasnexus/pgae081>.
- Tank, S. E., J. W. McClelland, R. G. M. Spencer, et al. 2023. "Recent Trends in the Chemistry of Major Northern Rivers Signal Widespread Arctic Change." *Nature Geoscience* 16, no. 9: 789–796. <https://doi.org/10.1038/s41561-023-01247-7>.
- Terhaar, J., O. Torres, T. Bourgeois, and L. Kwiatkowski. 2021. "Arctic Ocean Acidification Over the 21st Century Co-Driven by Anthropogenic Carbon Increases and Freshening in the CMIP6 Model Ensemble." *Biogeosciences* 18, no. 6: 2221–2240. <https://doi.org/10.5194/bg-18-2221-2021>.

UNEP-WCMC, WorldFish Centre, WRI, TNC. 2021. *Global Distribution of Warm-Water Coral Reefs, Compiled From Multiple Sources Including the Millennium Coral Reef Mapping Project. Version 4.1. Includes Contributions From IMaRS-USF and IRD (2005), IMaRS-USF (2005) and Spalding et al. (2001)*. Cambridge (UK): UN Environment World Conservation Monitoring Centre. <https://doi.org/10.34892/t2wk-5t34>.

Vargas, C. A., L. A. Cuevas, B. R. Broitman, et al. 2022. "Upper Environmental pCO₂ Drives Sensitivity to Ocean Acidification in Marine Invertebrates." *Nature Climate Change* 12: 200–207. <https://doi.org/10.1038/s41558-021-01269-2>.

Waldbusser, G. G., B. Hales, C. J. Langdon, et al. 2015. "Saturation-State Sensitivity of Marine Bivalve Larvae to Ocean Acidification." *Nature Climate Change* 5, no. 3: 273–280. <https://doi.org/10.1038/nclimate2479>.

Ward, M., A. K. Spalding, A. Levine, and E. A. Wolters. 2022. "California Shellfish Farmers: Perceptions of Changing Ocean Conditions and Strategies for Adaptive Capacity." *Ocean and Coastal Management* 225: 106155. <https://doi.org/10.1016/j.ocecoaman.2022.106155>.

Weinstock, J. B., S. L. Morello, L. M. Conlon, H. Xue, and P. O. Yund. 2018. "Tidal Shifts in the Vertical Distribution of Bivalve Larvae: Vertical Advection vs. Active Behavior." *Limnology and Oceanography* 63, no. 6: 2681–2694. <https://doi.org/10.1002/lno.10968>.

Zamelczyk, K., A. Fransson, M. Chierici, et al. 2021. "Distribution and Abundances of Planktic Foraminifera and Shelled Pteropods During the Polar Night in the Sea-Ice Covered Northern Barents Sea." *Frontiers in Marine Science* 8: 644094. <https://doi.org/10.3389/fmars.2021.644094>.

Supporting Information

Additional supporting information can be found online in the Supporting Information section.