



# **BLUE MISSION BANOS**

**Supporting the Mission  
Ocean Lighthouse in the  
Baltic and North Sea Basins**

## **Get Inspired!**

**Public engagement activities  
for a sustainable aquatic environment**

**BlueMissionBANOS** - Supporting the Mission Ocean Lighthouse in the Baltic and North Sea Basins.

Funded by the European Union under [Grant Agreement ID 101093845](#).

The brochure '*Get Inspired!*' is created as an inspiration tool derived from the project deliverable '*Report on citizen engagement and concerns in the BANOS area with respect to sustainable blue economy*' ([D3.1](#)). For more information, please consult the full deliverable report.

**Publication Date:** November 2025

**Produced by:** BlueMissionBANOS Consortium - Project consortium includes 11 partners across the BANOS region.

**Lead Partner:** SUBMARINER Network ([info@submariner-network.eu](mailto:info@submariner-network.eu))

**Design & Layout:** Flanders Marine Institute (VLIZ)

Published on [www.bluemissionbanos.eu](http://www.bluemissionbanos.eu)

*Get Inspired!* © 2025 by BlueMissionBANOS Consortium is licensed under CC BY 4.0. To view a copy of this license, visit [www.creativecommons.org/licenses/by/4.0](http://www.creativecommons.org/licenses/by/4.0)



ADAPTABLE TO ALL BLUE ECONOMY FIELDS  
NATURE BASED SOLUTIONS COMICS  
📍 COMBINED

# NATURE BASED SOLUTIONS COMICS

## COMIC BOOKS

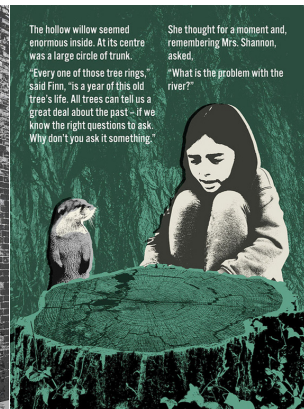
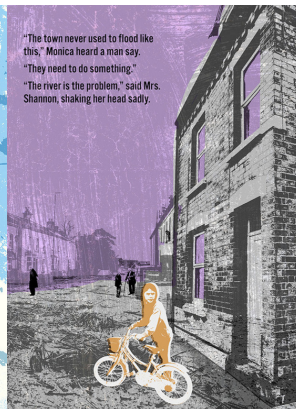
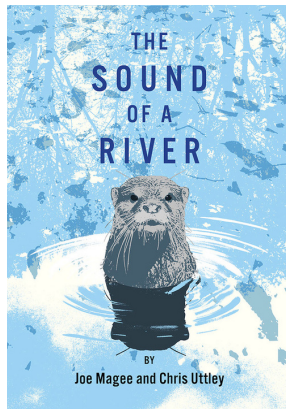


### ACTIVITY DESCRIPTION

NBS Comics is an interdisciplinary project that works together with artists, scientists, and NBS experts to commission and empower comic creators to tell their stories of nature and people.

BUDGET ★★☆☆

The NBS Comics project invites comic creators (through open calls and commissions), to imagine comics about nature and her benefits. Creators can use any comic style, various approaches to storytelling, and many languages.



### ADVANTAGES

- Hard topics can be made understandable
- Can be applied to many different themes (e.g.: impact of climate change, promoting renewable energy)
- Visually aesthetic to read, makes you want to engage with the material
- The curiosity of children and teenagers might be sparked with the visuals

### DISADVANTAGES

- Some budget is needed to print or provide the comics to the public
- Creative thinking essential to create a comic book
- Format might not appeal to everyone (can be seen as childish by some people)



ADAPTABLE TO ALL BLUE ECONOMY FIELDS  
FOCUS ON THE POSITIVE



# FOCUS ON THE POSITIVE

## INTERACTIVE PANEL CONTEST

### ACTIVITY DESCRIPTION

'Focus on the positive' is a public event where the audience chooses how to change the world. At each event, a handful of inspiring researchers explain exactly how they want to tackle the big issues in our world.

The audience grills the speakers on stage and face-to-face before voting for what they would like to support. The winning researcher gets £2000 to spend on the idea they have proposed. A runner-up receives £1000.

BUDGET

The world is full of problems, but it's also full of brilliant people, chipping away at those seemingly insurmountable problems with their ideas and expertise.



### ADVANTAGES

- Hard topics can be made discussable
- Can be applied to many different themes (e.g.: solutions for more renewable energy or coastal erosion)
- Gives the public the opportunity to pose all their questions and voice their opinion
- For lower budgets: prize money can be eliminated

### DISADVANTAGES

- Public should be open to voice their perspective
- Experts on the topic needed to develop this
- Format might not appeal to everyone (due to involvement of public speaking)



ADAPTABLE TO ALL BLUE ECONOMY FIELDS EMITTING SPECIFIC SOUNDS

# VOICE OF THE NORTH SEA

 THE NETHERLANDS

## VOICE OF THE NORTH SEA

### LUNCH/LECTURE/CONCERT

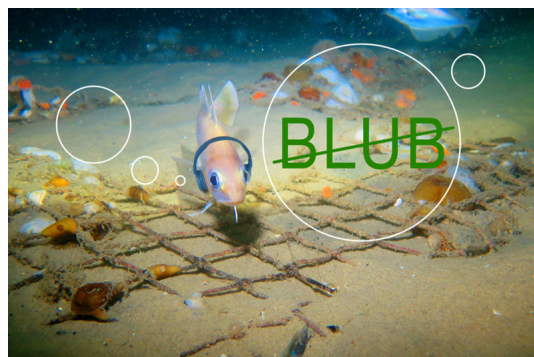
#### ACTIVITY DESCRIPTION

'The voice of the North Sea' is a joint effort of scientists and sound artists exploring the sounds of a healthy and biodiverse reef. Music, composed with sound recordings from scientists, blends with lecture and inspiring storytelling. But then anthropogenic North Sea voices like shipping noise and pole hammering for wind turbines enter the music to turn it into "next door house party chaos" and worse.

BUDGET 

Could there be a more benign, symbiogenic music in the near future? Will we start listening to the voice of the North Sea and respect the biodiversity of the natural musicians?

Come and listen to the beauty, the problems and promises!



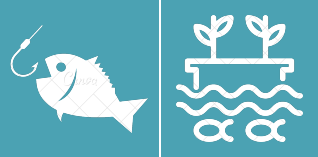
#### ADVANTAGES

- Immerse citizens in unknown environments
- Accessible for a wide audience, even appealing to children and teenagers
- Creative approach to uncover hidden environmental problems
- Can be transformed into various formats (e.g.: dance workshops, creative expression, lunchtalks etc.)

#### DISADVANTAGES

- A short introduction will be needed to signify the importance of a biodiverse ecosystem
- Soundscapes needed of various sounds present in the North Sea
- Musicians needed to make a uniform sound composition





ADAPTABLE TO (SUSTAINABLE) FISHERIES AND AQUACULTURE

# THE SHRIMP CROQUETTES FESTIVAL

 BELGIUM

## THE SHRIMP CROQUETTES FESTIVAL COOKING CONTEST

### ACTIVITY DESCRIPTION

On this festival, the restaurants of Ostend will be presenting their own traditional shrimp croquette. The audience will be able to taste the shrimp croquettes and bring out their vote to the restaurant with the best croquettes. Next to the public jury, a professional jury will add their vote as well. The winner of the contest gets the honor of having the best shrimp croquette of Ostend.

---

The famous shrimp croquette, loved by many Belgian citizens, can get the public moving to an aquatic public engagement event.

To include an educational aspect to the festival, at the site, sustainable shrimp fishing might be highlighted or alternatives for the shrimp croquette could be presented and voted for.

BUDGET 



### ADVANTAGES

Humorous concept might attract many interested citizens (accessible for a wide audience)

Can be altered to fit many food-related sectors

Including restaurants can create more bottom-up support

Can be transformed into various formats (e.g.: dance workshops, creative expression, lunchtalks etc.)

### DISADVANTAGES

Interested restaurants need to be willing to participate or to be challenged to work sustainably

Participants need to be open to trying sustainable alternatives

Quite some budget might be needed to facilitate this PE format (e.g.: cooking space, space to eat for participants)





ADAPTABLE TO FISHERIES (FOCUS ON GHOST FISHING GEAR)

# 5 - MINUTE BEACH CLEAN-UP

 GLOBAL

## 5 - MINUTE BEACH CLEAN-UP

### BEACH CLEAN-UP

# 5MINUTE FOUNDATION

### ACTIVITY DESCRIPTION

The project motivates individuals, groups or even businesses to participate in a 5-minute beach clean-up and post about it on social media. In this way, the beach litter is collected and awareness can be raised to a wider audience.

### BUDGET



“Plastic pollution in our oceans has reached a critical point where our basic human right to clean food and water is being threatened.”

Ingrid Shank, EVP - 5 Minute Foundation



### ADVANTAGES

Citizens are actively involved in the project, they perform the beach clean-up + raise awareness

Participants can see with their own eyes how the marine litter levels are in their own neighborhood

Almost no materials are needed to participate in a clean-up

Can be applied to fisheries themes (e.g.: ghost gear)

### DISADVANTAGES

Since participants perform clean-ups on their own, the causes of litter problems might not be entirely clear to the participants who have little background knowledge on the subject



ADAPTABLE TO ALL BLUE ECONOMY FIELDS

# ESCAPE ROOM

 THE NETHERLANDS

## ESCAPE ROOM ON MARINE UNIT TECHNICAL SUPPORT ESCAPE ROOM

### ACTIVITY DESCRIPTION

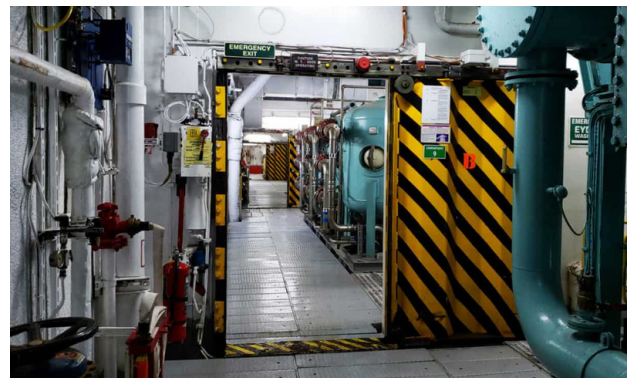


An escape room that provides insights to participants on the Marine Unit Technical Support on board of a ship. Explore the engine or control room and find the fastest way out!

BUDGET 

Time is ticking away, just 60 minutes. Will you manage to prevent another war?

Take up the challenge in the Control Room and the Engine Room and follow in the footsteps of the Marine Unit Technical Support.



### ADVANTAGES

Citizens are actively involved in the works a Marine Unit Technical support.

Immersive aspect can motivate citizens to participate.

Can be applied to many Blue economy themes (e.g.: solving global warming, stop flooding..).

### DISADVANTAGES

Educational aspect might get lost by the game component if not executed correctly.

Can take quite some time to create an escape room on a specific topic.

A lot of props needed to make the look and feel of an actual escape room.



# ADAPTABLE TO ALL BLUE ECONOMY FIELDS DANCEROOM SPECTROSCOPY



## DANCEROOM SPECTROSCOPY INTERACTIVE VISUAL SPECTACLE



### ACTIVITY DESCRIPTION

Project that fuses 3d imaging and rigorous molecular physics, dS transforms people into energy fields and lets them wander through the nano-quantum world, where they trigger sounds and images. There's no limit on the number of "players", and the more they cooperate, the more engrossing it becomes

BUDGET ★★☆☆

Danceroom Spectroscopy (dS) is a new attempt at visualizing the nano-world, but with a twist.

It puts us in the picture. People can literally step into, wander through, and interact with the nano-world. dS invites you to move, observe, play, and even dance.



### ADVANTAGES

Can open portals to a world normally never seen by the wider public

Can be applied to many different themes (e.g.: plankton or plastic pollution research)

Can be down scaled to only showcasing projections but can also be up scaled to have an immersive experience

All ages can participate

### DISADVANTAGES

Quite some space needed + ability to black-out the room

Extra guidance and information is needed to highlight importance of subject

Expensive equipment (e.g.: projector) required.

Adaptation to other topics will need creative thinking



# BLUE TECH (BUT APPLICABLE ON ALL OTHER THEMES) OCEAN COMMUNITY CHALLENGE

 GLOBAL

## OCEAN COMMUNITY CHALLENGE COMPETITION/HACKATON

### ACTIVITY DESCRIPTION



The Ocean community challenge is a hackaton format that inspires participants to capture new opportunities the ocean offers and to explore how emerging technologies could help to solve ocean challenges and foster sustainable use of ocean resources. They encourage participants to experiment by building prototypes based on technology, ocean resources, and circular economy principles for everyday environmental problems.

BUDGET 

**Are you an ocean blue-tech lover and innovator with great ideas?**

**Join our global and annual challenge, the Ocean Community Challenge!**



### ADVANTAGES

Citizens are actively involved in thinking about solutions for aquatic environmental challenges.

New and innovative solutions can arise from this PE approach.

Can be applied to many Blue Economy themes.

### DISADVANTAGES

Mostly only people with a technical background can participate.

Quite a large budget needed to bring ideas participants to real life.

A lot of follow up needed to fully develop idea of participants.



APPLICABLE FOR ALL THEMES  
THEATRE PERFORMANCE



**THEATRE PERFORMANCE "LALELA ULWANDLE" (LISTEN TO THE SEA)  
AND A CONVERSATION ON INCLUSIVE OCEAN GOVERNANCE**

THEATER PIECE



ACTIVITY DESCRIPTION

Lalela ulwandle is a research-based theatre performance and public dialogue event that explores how we may start to build solidarity in climate change adaptation and resilience through environmentally just and equitable, inclusive ocean decision-making processes.

BUDGET ★★☆☆

The performance is followed with a facilitated public-discussion with researchers, performers, decision-makers and the audience.

The post-show dialogue provides rich input into ongoing policy, legal, and judicial innovation in ocean decision-making.



ADVANTAGES

Creative perspectives can be developed in this PE format.

Can be applied to many Blue Economy themes.

The format can be an accessible way to give a voice to people who are often overlooked in ocean policy decisions.

builds solidarity in climate change battle since stories are being shared.

DISADVANTAGES

Takes a lot of follow-up and organisations to create a theatre piece (intense cooperation needed between theatre makers and participating citizens).

Some stories can be quite harrowing, it is essential that the organiser of the PE activity can navigate these stories with respect.





LINKED TO THE RENEWABLE ENERGY FIELD  
CITIZEN SCIENCE

 EUROPE

# THE AMBER PROJECT

CITIZEN SCIENCE

## ACTIVITY DESCRIPTION



The AMBER (Adaptive Management of Barriers in European Rivers) project, aims to apply adaptive management to the operation of barriers in European rivers to achieve a more effective and efficient restoration of stream connectivity, in collaboration with hydro-power companies and river managers to maximize benefits and minimize ecological impacts.

By becoming an AMBER citizen scientist you can help reconnect European rivers, track barriers, and learn about their impacts!

Your help by recording river barriers with the Barrier Tracker app is vital to map all barriers in European rivers and build the first European Barrier Atlas.

BUDGET 



## ADVANTAGES

Includes citizens, hydro-power companies and NGO's into a science project.

Interdisciplinary approach can spark new and innovative perspectives or solutions for certain problems.

Develops a holistic framework and associated tools for guiding the restoration of local river ecosystems during the project.

## DISADVANTAGES

Many citizens needed to map all the river barriers and have a complete overview on the entire European river system.

A technological tool (app or website) is needed to guide the citizen scientist on their mapping journey and let them upload data.



[HTTPS://PORTAL.AMBER.INTERNATIONAL/](https://portal.amber.international/)



LINKED TO FISHERIES AND BLUE TOURISM  
CITIZEN SCIENCE  
📍 GERMANY

# BODDENHECHT

## CITIZEN SCIENCE

### ACTIVITY DESCRIPTION



Scientists and fishermen work together to research pike to benefit fishing activities and fishing tourism, habitat and species restoration and scientific knowledge of the species.

BUDGET ★★☆☆

In the project they investigate the factors influencing the Bodden pike, analyze migration movements, narrow down spawning areas and quantify the socio-economic and touristic importance of the fishing and commercial fishing of the Bodden pike stocks for the region.



### ADVANTAGES

Includes fisheries in research that might benefit themselves later as well.

Interdisciplinary approach can spark new and innovative insights or solutions for certain problems.

### DISADVANTAGES

Some persuasiveness might be needed to get fishermen interested in joining the project.

An intense follow-up and inclusion effort needs to be made to include fishermen. Experience with including particular groups in science is advisable.



[HTTPS://WWW.IFISHMAN.DE/PROJEKTE/BODDENHECHT/UEBERSICHT-BODDENHECHT/](https://www.ifishman.de/projekte/boddenhecht/uebersicht-boddenhecht/)