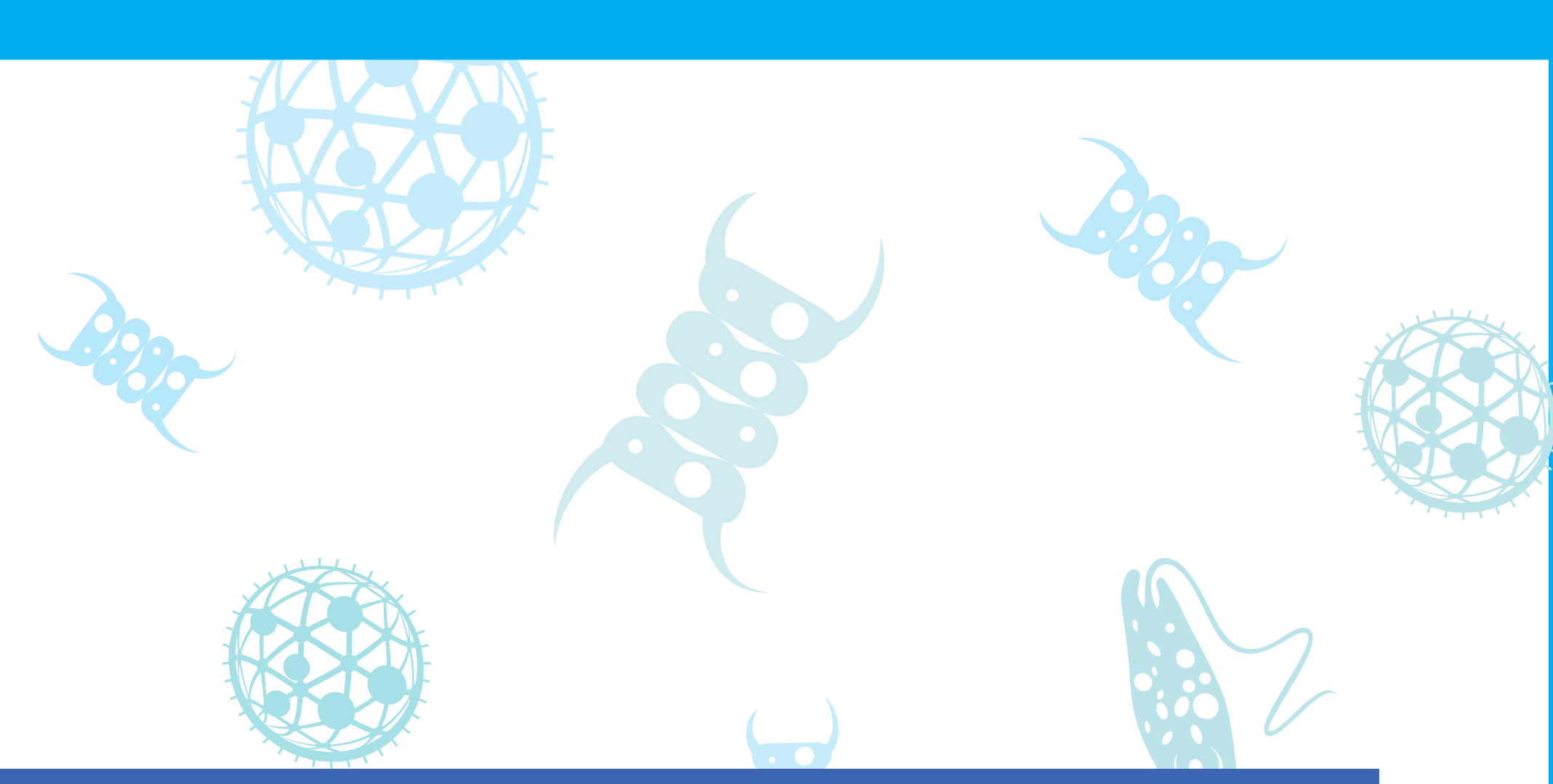


ASSEMBLE

ASSOCIATION OF EUROPEAN MARINE BIOLOGICAL LABORATORIES EXPANDED



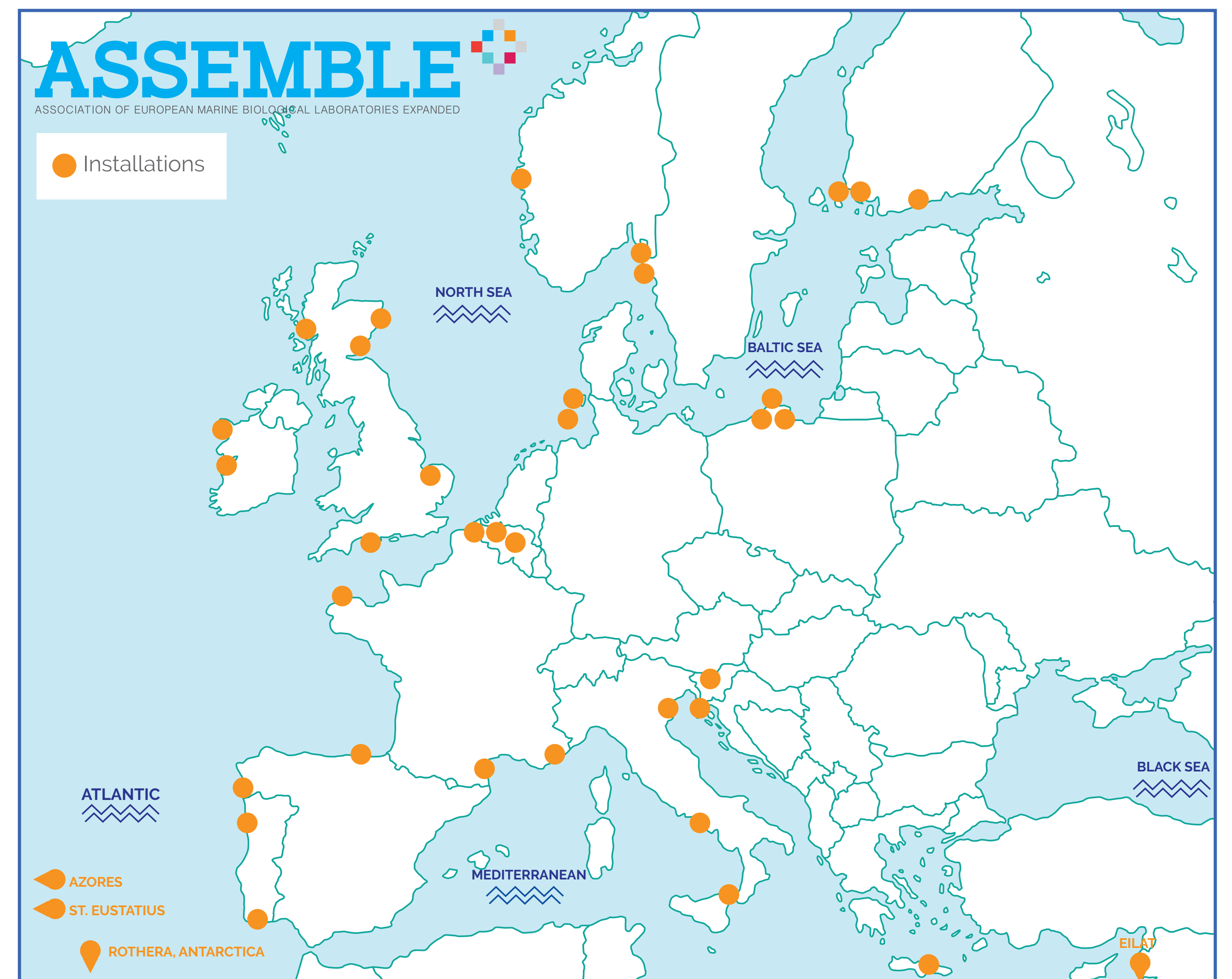
THE CHALLENGE

ASSEMBLE Plus will bring together and open up research infrastructures to all European researchers in the marine biology field, from both academia and industry.

OBJECTIVES

ASSEMBLE Plus will provide scientists from academia, industry and policy with a quality-assured programme of on-site and remote access to a range of services. The key principles of **ASSEMBLE Plus** are:

- Integration of the advanced community of the European marine biological stations
- Improve our technology/knowledge-base for fundamental and applied research
- Encourage scientists from academia, industry and policy to access the European marine biological stations
- Consolidation of EMBRC-ERIC and expansion of its Membership base
- Support the EU Blue Growth Agenda
- Reaching out to the next generation of scientists with research and training opportunities



The **ASSEMBLE Plus** partnership comprises 27 partners, 32 marine biological stations and 38 infrastructures.

EXPECTED IMPACTS

ASSEMBLE Plus brings together many of Europe's marine biological stations (MBSs) and institutes within a functional organisation, to the benefit of the marine biological and ecological research communities.

Scientists from related areas (e.g. biomedical and biotechnological research) will be encouraged to apply for access, as will scientists in industry. Based on the experience of the first ASSEMBLE project, it is expected that more than 1000 projects will apply for access and benefit from **ASSEMBLE Plus** support.

The key impacts will be:

- To improve the long-term sustainability of marine biological stations
- To increase the number of "excellent" science publications citing **ASSEMBLE Plus** and its research institutes
- To create new enabling technologies and increase the service offers by EMBRC and the European MBSs
- To stimulate the engagements of new users with EMBRC and the European MBSs
- To foster public-private partnerships

SERVICES

ASSEMBLE Plus can provide access to the following services:

- Culture collections/biobanks of microalgae, cyanobacteria, bacteria, seaweeds, viruses, zooplankton and fish
- Sampling facilities
- Isolation and preservation of marine organisms
- Cultivation and rearing facilities
- Microscopy and bio-imaging services
- Taxonomic services
- Molecular biology and -omics
- Biochemical analysis
- Bioassays
- Structural and chemical analysis

ASSEMBLE Plus is open for your project, please visit:

www.assembleplus.eu

Contact Us: amt@embrc.eu | Communication and Press: georgia@aquatt.ie



This project has received funding from the European Union's Horizon 2020 research and innovation programme under grant agreement No 730984. This output reflects the views only of the author(s), and the European Union cannot be held responsible for any use which may be made of the information contained therein.