



HOW TO PARTICIPATE IN THE FIRST CALL: Practical details and procedures

MARTA NORTON, FCT

October 29, 2014

FIRST ERA-MBT STAKEHOLDER MEETING, Olissippo Oriente Hotel, LISBON





1st JOINT CALL

FOR PROPOSALS

“THE
DEVELOPMENT
OF BIOREFINERY
PROCESSES
FOR MARINE
BIOMATERIALS”



- ✓ The call is centrally coordinated by the ERA-MBT Joint Call Secretariat (JCS) which is, for this first call, represented by the Project Management JÜlich (PtJ), Germany

JOINT CALL SECRETARIAT

Dr. Petra Schulte

Phone: +49 2461 61-9031

E-mail: petra.schulte@fz-juelich.de

Fax: +49 246 61-1790

Dr. Jens Schiffers

Phone: +49 2461 61-3972

E-Mail: j.schiffers@fz-juelich.de

- ✓ For any queries, please contact the ERA-MBT Joint Call Secretariat (JTC)

PARTICIPATING COUNTRIES

First transnational joint call

13 Funding Agencies from 11 Regions /Countries

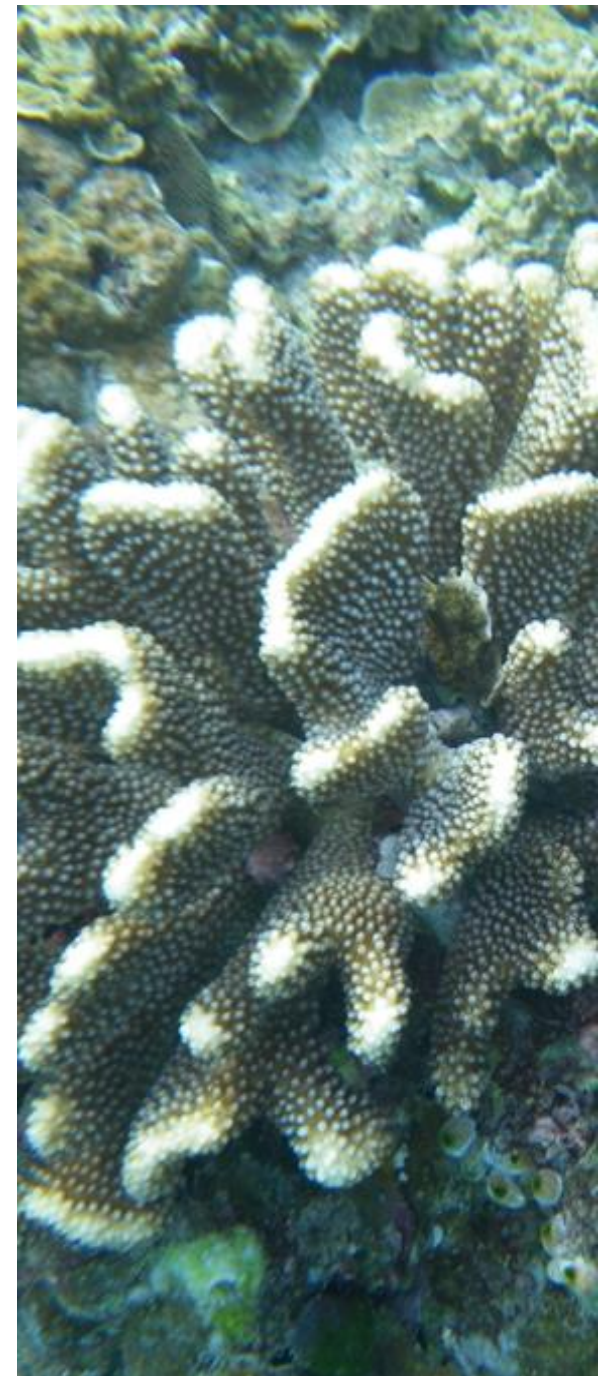
- ✓ Each funding organization has national contact persons available to inform about the specific national requirements
- ✓ An indicative budget of around 8 M EUR is available for this call . Each participating funding agency will fund his own regional / national teams.
- ✓ In the guidelines for applicants you can find details on individual budget allocations.

Region / Country	Funding org.	Contact person
<i>Flanders (Belgium)</i>	IWT	Inge Arents
<i>Flanders (Belgium)</i>	FWO	Wim Schreurs Olivier Boehme
<i>Denmark</i>	IFD	Floor ten Hoopen
<i>Iceland</i>	RANNIS	Lýður Skúli Erlendsson
<i>Ireland</i>	MI	Dermot Hurst
<i>New Caledonia</i>	ADECAL	Pablo Chavañoe
<i>Norway</i>	RCN	Steinar Bergseth
<i>Norway</i>	IN	Ole Jørgen Marvik
<i>Portugal</i>	FCT	Marta Norton
<i>Romania</i>	UEFISCDI	Simona Stoian
<i>Slovenia</i>	MIZS	Kim Turk
<i>Spain</i>	MINECO	Julio Barbas
<i>Sweden</i>	FORMAS	Lisa Almesjö



TIMELINE

Official Call Opening	20 October 2014
Deadline for pre-proposals	10 December 2014
Invitation for full proposals	27 February 2014
Deadline for full proposals	30 April 2015
Deadline International Evaluation Panel	End of June 2015
Funding decision	End of July 2015
Starting date of projects	End of 2015 / Beginning of 2016



APPLICATION PROCEDURE

ALL INFORMATION AVAILABLE:
<http://www.marinebiotech.eu/first-transnational-call>

Home
ERA-MBT
Activities
Stakeholder Meeting
Open Consultation
First transnational call
News & Events
Resources
Contact
Documents
Media Gallery

First transnational call for research projects

Aim of the call

The forthcoming first transnational joint call for research projects within the framework of ERA-MarineBiotech aims to stimulate joint European research and development activities in marine biotechnology. Collaborative projects related to **"The development of biorefinery processes for marine bioresources"** should include researchers from the academic and the industrial sector.

Funding will be granted for a maximum of three years according to national regulations.

Timeline

Submissions of proposals will be in two steps:

- a pre-proposal step with submission deadline by **December 10, 2014**, and
- a full proposal step for invited consortia with submission deadline by **April 30, 2015**.

Projects are expected to start at the **end of 2015 / beginning of 2016**.

Call documents

Call Text: [download here](#)

Guidelines for Applicants: [download here](#)

Application procedure

Submissions of proposals will be in two stages: all pre-proposals will be reviewed and qualified projects will be invited to submit a full proposal.

Proposals can be submitted through the **ERA-MBT online submission system:** www.submission-marinebiotech.eu

Project partners can use the **partnering platform** within the submission system to enter offers and requests for project ideas and build up a project consortium.

CALL TEXT
GUIDELINES FOR APPLICANTS

ON LINE SUBMISSION SYSTEM

SUBMISSION PROCEDURE

- ✓ Proposals must be submitted using the **online submission tool**
- ✓ **Submissions of proposals will be in two steps:**
 - A pre-proposal step (December, 10, 17:00 CET) and
 - A Full proposal step for qualified consortia (April 30, 17:00 CET)
- ✓ Proposals must be written in English

A pre-proposal application form consists of the following parts:

- **Profile of all partners** (contact data, tasks, Curriculum Vitae, references)
- **Project data** (title, acronym, duration, topic affiliation)
- **Abstract** (max characters 1000)
- **Keywords**
- **Project description** (max characters 10000)
- **Finances** (requested funding, own contribution, brief description)

QUALIFIED CONSORTIA

will be INVITED TO SUBMIT **FULL PROPOSAL**

Full proposal application form consists of the following parts:

- **Summary of the project** (work plan, aims and expected results -max. 6.000 characters)
- **Background and state-of-the-art** (max. 8.000 characters)
- **Work plan** (including involvement of participants in different work packages, plus lists of milestones and deliverables -max. 16.000 characters)
- **GANTT chart** (illustration of project schedule)
- **Added value of the proposed international collaboration** (max. 3.000 characters)

continues....

QUALIFIED CONSORTIA

will be INVITED TO SUBMIT FULL PROPOSAL

Full proposal application consists of the following parts:

- **Exploitation plan:** Prospects regarding application in industry, market potential, position with regard to IPR both within and outside the consortium (e.g. barriers to sharing materials or results-max. 8.000 characters)
- **Justification of requested budget** (also specifying co-funding from other sources necessary for the project)
- **Pertinent ethical, legal and social aspects of the proposal** (max. 2000 characters)
- **Brief CVs of the project leaders**, including lists of up to five recent publications

ERA-MBT ELIGIBILITY CRITERIA

- **Research proposals may be submitted by:**
 - Higher education institutions,
 - Non-university public research organizations,
 - Commercial companies, in particular small and medium-size enterprises (SMEs)
- Transnational consortia must consist of a **minimum of three partners from at least three different countries participating in the call**, with a **maximum of eight partners**, and a **maximum of three partners per country**
- Eligible organisations from other countries (not involved in the call) **can participate**, as long as they are able to clearly demonstrate an **added value to the consortium** and **secure their own funding**, either in cash or in kind;

ERA-MBT ELIGIBILITY CRITERIA

- Each consortium must **nominate a project coordinator** to represent the consortium, submit the pre-proposal/full proposal, and establish any further communication with the Joint Call Secretariat. The coordinator must belong to the funding participating countries in the call.
- Each consortium **should include researchers from both the academia and the industrial sector**, although this is not mandatory (please note the national regulations). **The economic and societal impact** of the research project will be considered in any case.
- Funding will be granted for a **maximum of three years** according to national regulations.

NATIONAL ELIGIBILITY CRITERIA

- Applicants must refer and adhere to the **Specific regulations of the national/ regional funding organisations.**
- **Each project partner is responsible for checking that he/she meets the national eligibility criteria.** Therefore each project partner is strongly encouraged to get in touch with his/her national contact (see details in the guidelines (section 6))

The inclusion of a non-eligible partner in a proposal will result in the rejection of the entire proposal without further review.

EVALUATION

Pre-proposal evaluation

Each funding agency will check the eligibility of their national applicants and the JCS will check the eligibility of the applications (formal criteria)

A **Peer Review Panel (PRP)**, constituted by **international experts**, will give a global assessment for each proposal, using a common evaluation form, based on the criteria:

1.Relevance and contribution of the collaborative project to the aims of the call

&

2.Scientific and technical quality

- scientific innovation potential,
- international competitiveness,
- expertise of the applicants & potential application of the expected results

Full proposal evaluation

The PRP will evaluate and comment the full proposals based on the following scientific criteria:

- Relevance to funding priority
- Scientific and/or technological excellence
- Quality and efficiency of the implementation and management
- Potential impact and prospects for the transfer of results into industrial application

MONITORING

- The coordinators of each funded project must submit a **mid-term** and a **final scientific project report** to the JCS together with summary reports from each participant
- The coordinators will present the results of their projects at status seminars to be organized by the JCS. Any publications resulting from the funded projects must acknowledge the national funding agencies and ERA-MBT.

ERA-MBT Submission System



www.submission-marinebiotech.eu



The screenshot shows the homepage of the MarineBiotech submission platform. At the top, there is a navigation bar with the MarineBiotech logo on the left and links for '1ST CALL', 'PARTNERING PLATFORM', 'MARINEBIOTECH', and 'LEGAL NOTICE' on the right. A 'PtJ Submission Platform' badge is visible in the top right corner. Below the navigation bar is a banner image of jellyfish with the text 'MARINE BIOTECHNOLOGY ERA-NET ERA-MBT'. The main content area is divided into three sections: 'CONTACT', 'SUBMISSION', and 'CALL DOCUMENTS'. The 'CONTACT' section lists Dr. Jens Schiffers and Dr. Petra E. Schulte with their contact information. The 'SUBMISSION' section has a list of links: 'COORDINATOR REGISTRATION', 'COORDINATOR LOGIN', 'PARTNER', and 'FUNDER'. The 'CALL DOCUMENTS' section has links for 'Announcement' and 'Guidelines for Applicants'. The 'WELCOME' section contains a message about the submission platform, instructions for coordinators and partners, and information for funders.

CONTACT

Dr. Jens Schiffers
+49 2461 61-3972
j.schiffers@fz-juelich.de

Dr. Petra E. Schulte
+49 2461 61-9031
petra.schulte@fz-juelich.de

SUBMISSION

- COORDINATOR REGISTRATION >
- COORDINATOR LOGIN >
- PARTNER >
- FUNDER >

CALL DOCUMENTS

- Announcement
- Guidelines for Applicants

WELCOME

... to the submission platform of the first call for transnational research projects within ERA-MarineBiotech (ERA-MBT). Applications for funding within this call can only be submitted through this platform.

If you want to register yourself as a **coordinator** for a transnational marine biotechnology research project, please read thoroughly the **GUIDELINES FOR APPLICANTS** before. It makes yourself sure that your planned project fits into the focus of this call. Please, note that some topics may be not fundable by some funding organisations. So, we would like to advise you to take a special look on the national regulations in the guidelines. You can download the guidelines from this page in the left corner below!

Non-coordinating **partners** of a cooperation project will be invited by the respective coordinator to enter their profile data and to get access to the automatically generated project fact sheet. For the invitation by the coordinator, the platform creates a password which is sent to automatically by email to the partner and which allows access.

Funders get access to the platform by electronic invitation from the call office to do the eligibility check of pre-proposals received from their county.

If you have any technical problems with your login or the platform, please don't hesitate to contact us.

(Also available via ERA-MBT homepage: www.marinebiotech.eu)

ERA-MBT Submission System

Structure:

- Registration Coordinators
- Login for Coordinators, Partners & Funders (later also login for Evaluators)
- Call Documents (announcement and guidelines)
- Contact Information of the Joint Call Secretariat (JCS)
- Partnering Platform

CONTACT

Dr. Jens Schiffers
+49 2461 61-3972
j.schiffers@fz-juelich.de

Dr. Petra E. Schulte
+49 2461 61-9031
petra.schulte@fz-juelich.de

SUBMISSION

- COORDINATOR REGISTRATION >
- COORDINATOR LOGIN >
- PARTNER >
- FUNDER >

CALL DOCUMENTS

- Announcement
- Guidelines for Applicants

WELCOME

Contact Information of the Joint
Call Secretariat (JCS)

The coordinator will register here

Non-coordinating **partners** of a cooperation project **will be invited by the respective** coordinator to enter their profile data and to get access to the automatically generated project fact sheet. For the invitation by the coordinator, **the platform creates a password** which is sent to automatically by email to the partner and which allows access.

Call documents

LOGIN COORDINATOR & PARTNER

ERA-MBT Submission System

Coordinator Registration:

- Profile
- Partner -> Partners will be invited by the coordinator to enter their data!
- Project data
- Abstract
- Keywords
- Project description
- Finance
- Fact Sheet -> Will be generated automatically with the entered information!
- Validation -> Final Check before submission

ERA-MBT Submission System

Coordinator Login

After registration the coordinator can login again and change data until the end of the deadline (10th Decembre 2014). Previous versions of the per-proposal will be deleted automatically after re-submission.

Partner Login:

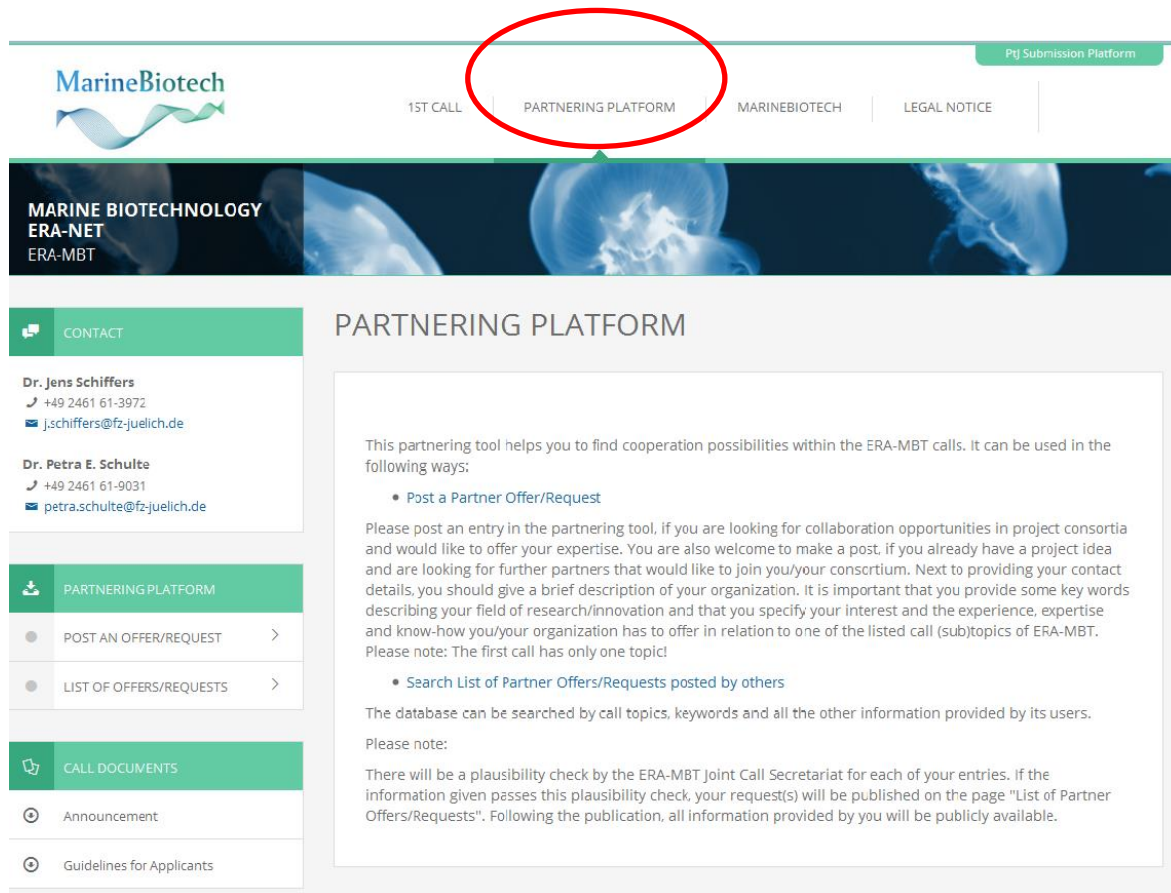
- Profile
- Fact Sheet -> Will be generated automatically with the entered information!

ERA-MBT Submission System

www.submission-marinebiotech.eu

Partnering Platform

- For posting partner offers and requests
- For searching partner offers and requests by others



MarineBiotech

1ST CALL | **PARTNERING PLATFORM** | MARINEBIOTECH | LEGAL NOTICE

PfJ Submission Platform

MARINE BIOTECHNOLOGY
ERA-NET
ERA-MBT

CONTACT

Dr. Jens Schiffers
+49 2461 61-3972
jschiffers@fz-juelich.de

Dr. Petra E. Schulte
+49 2461 61-9031
petra.schulte@fz-juelich.de

PARTNERING PLATFORM

- POST AN OFFER/REQUEST >
- LIST OF OFFERS/REQUESTS >

CALL DOCUMENTS

- Announcement
- Guidelines for Applicants

PARTNERING PLATFORM

This partnering tool helps you to find cooperation possibilities within the ERA-MBT calls. It can be used in the following ways:

- [Post a Partner Offer/Request](#)

Please post an entry in the partnering tool, if you are looking for collaboration opportunities in project consortia and would like to offer your expertise. You are also welcome to make a post, if you already have a project idea and are looking for further partners that would like to join you/your consortium. Next to providing your contact details, you should give a brief description of your organization. It is important that you provide some key words describing your field of research/innovation and that you specify your interest and the experience, expertise and know-how you/your organization has to offer in relation to one of the listed call (sub)topics of ERA-MBT. Please note: The first call has only one topic!

- [Search List of Partner Offers/Requests posted by others](#)

The database can be searched by call topics, keywords and all the other information provided by its users.

Please note:

There will be a plausibility check by the ERA-MBT Joint Call Secretariat for each of your entries. If the information given passes this plausibility check, your request(s) will be published on the page "List of Partner Offers/Requests". Following the publication, all information provided by you will be publicly available.

ERA-MBT Submission System

Partnering Platform

For posting partner offers/requests:

- Type of Post (Offer or Request)
- Contact Data
- Keywords
- Topic
- Specific Cooperation Interest
- Description of Organisation

For listing partner offers/requests:

- Filter (Offers and/or Requests)
- Country
- Topic
- Organisation Type
- Free Search in Keywords in
Description

Thank you for your attention!



CALL FOCUS

The aim of the first Joint Call is to bring together basic, applied, technology and market driven research approaches to enhance and **develop efficient and sustainable biorefinery processes for marine bioresources**. Transnational research consortia from academia, research institutes and industry are invited to submit proposals that develop new and/or improved biotechnological knowledge, tools and methods for the sustainable processing of marine biomass into a variety of bio-based products and/or services. This is best achieved through integrated biorefinery processes ideally utilising all molecular fractions present in the relevant biomass.

